

Floodplain Study: Carson Creek

Carson Creek is a suburban watershed with a drainage area of 6.04 square miles and 8.25 miles of streams to be studied. The watershed is bordered roughly by the Colorado River to the northeast and is centered on and dominated by the US 183 and State Highway 71 interchange. The creek discharges into the Colorado River.

Map Legend

— Streams for Detailed Study

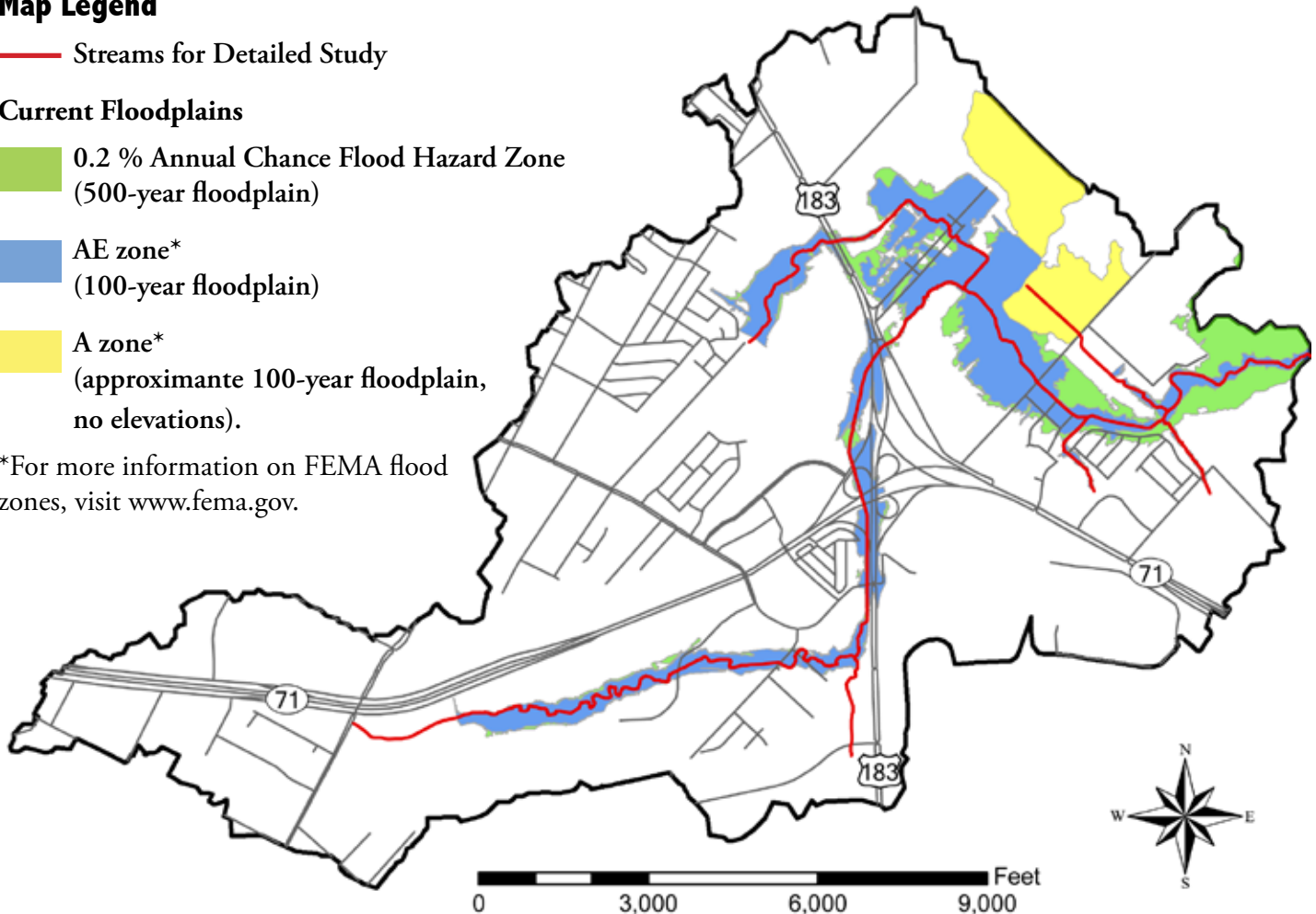
Current Floodplains

0.2 % Annual Chance Flood Hazard Zone
(500-year floodplain)

AE zone*
(100-year floodplain)

A zone*
(approximate 100-year floodplain,
no elevations).

*For more information on FEMA flood
zones, visit www.fema.gov.



Reason for Study

Significant flooding in the Carson Creek Watershed over the past two decades has led to a number of flood control projects. These projects include two sets of buyouts, between Tributaries 2 and 3 and in the Jet and Patton Lane area. In addition, construction began in December 2010 on a project to improve the Hoeke and Posten Lane low water crossings.

When the current floodplain maps were prepared, the most advanced topographic data was not yet available.

Because of this and because of the flood control projects, the watershed's hydraulic modeling needs to be updated. Minor updates to the hydrologic modeling are also needed.

Contact

City of Austin Floodplain Information Hotline
512-974-2843
floodinfo@ci.austin.tx.us