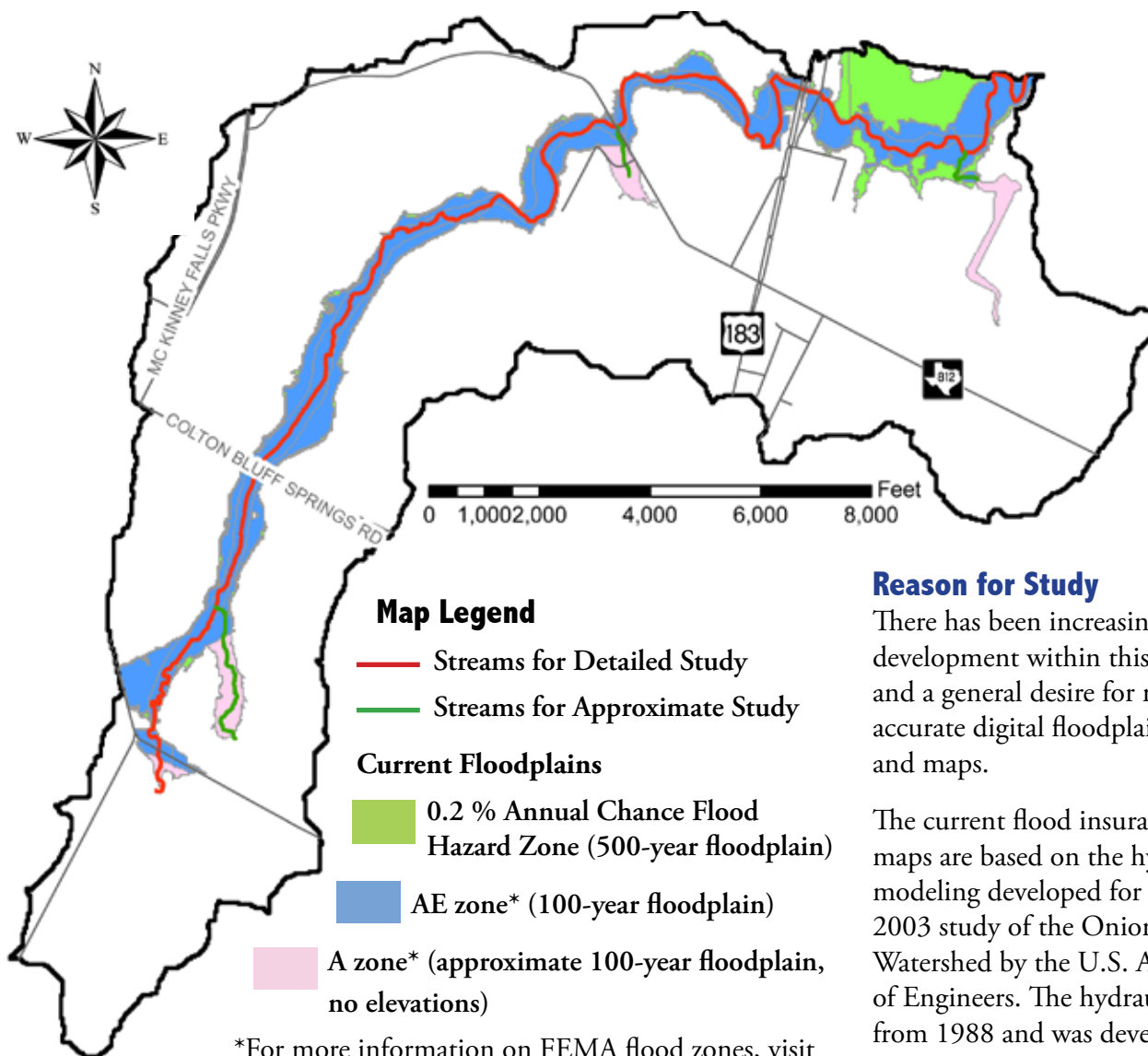


Floodplain Study: Cottonmouth Creek

Cottonmouth Creek is a suburban watershed with a drainage area of approximately 5 square miles and 7 miles of streams to be studied. The watershed is bordered roughly by the South Fork Dry Creek East Watershed on the south, Onion Creek Watershed on the north, Marble Creek Watershed to the west and North Fork Dry Creek East Watershed on the east. The creek discharges into Onion Creek.



Map Legend

- Streams for Detailed Study
- Streams for Approximate Study

Current Floodplains

- 0.2 % Annual Chance Flood Hazard Zone (500-year floodplain)
- AE zone* (100-year floodplain)
- A zone* (approximate 100-year floodplain, no elevations)

*For more information on FEMA flood zones, visit www.fema.gov.

Reason for Study

There has been increasing development within this watershed and a general desire for more accurate digital floodplain models and maps.

The current flood insurance rate maps are based on the hydrologic modeling developed for the 2003 study of the Onion Creek Watershed by the U.S. Army Corps of Engineers. The hydraulic model is from 1988 and was developed for the original FEMA study of the area.

Contact

City of Austin Floodplain
 Information Hotline
 512-974-2843
floodinfo@ci.austin.tx.us

Creek	Square Miles of Basin Area	Miles of Stream for Approximate Study	Miles of Stream for Detailed Study
Cottonmouth Creek and Tributaries	5.41	1.05	6.16