

2nd Street Urban Design Lower Shoal Creek Park

presented by
DAVID CAZARES, ASLA



Challenges Designing Urban Landscapes

Site Selection

Adjacent Project Teams & Project Sites

Examples of Stakeholder Coordination &
Design Criteria

Integration of Urban Design

Integration of Urban Design

Constructing in Urban Landscapes



Site Selection

know your context

challenges designing urban landscapes



Site Selection



- ▶ Programming
- ▶ Code Requirements
- ▶ Site Constraints
- ▶ Substation Access-Logistics for Heavy Equipment

Adjacent Project Teams & Project Sites

Seaholm District

challenges designing urban landscapes

mwm
Design Group



“Visualize a future urban oasis on
Downtown’s southwestern edge
that combines cultural and
community needs in an
exceptional setting for residents
and visitors ”

City’s Vision for the Urban Design of Seaholm District



Adjacent Project Sites



1. Seaholm Power Plant Redevelopment
2. Austin Central Library
3. Green Water Treatment Plant Redevelopment
4. Seaholm Electrical Substation Art Wall
5. Lance Armstrong Bikeway
6. Shoal Creek Trail

Adjacent Project Sites

1. Seaholm Power Plant Redevelopment
2. Austin Central Library
3. Green Water Treatment Plant Redevelopment
4. Seaholm Electrical Substation Art Wall
5. Lance Armstrong Bikeway
6. Shoal Creek Trail



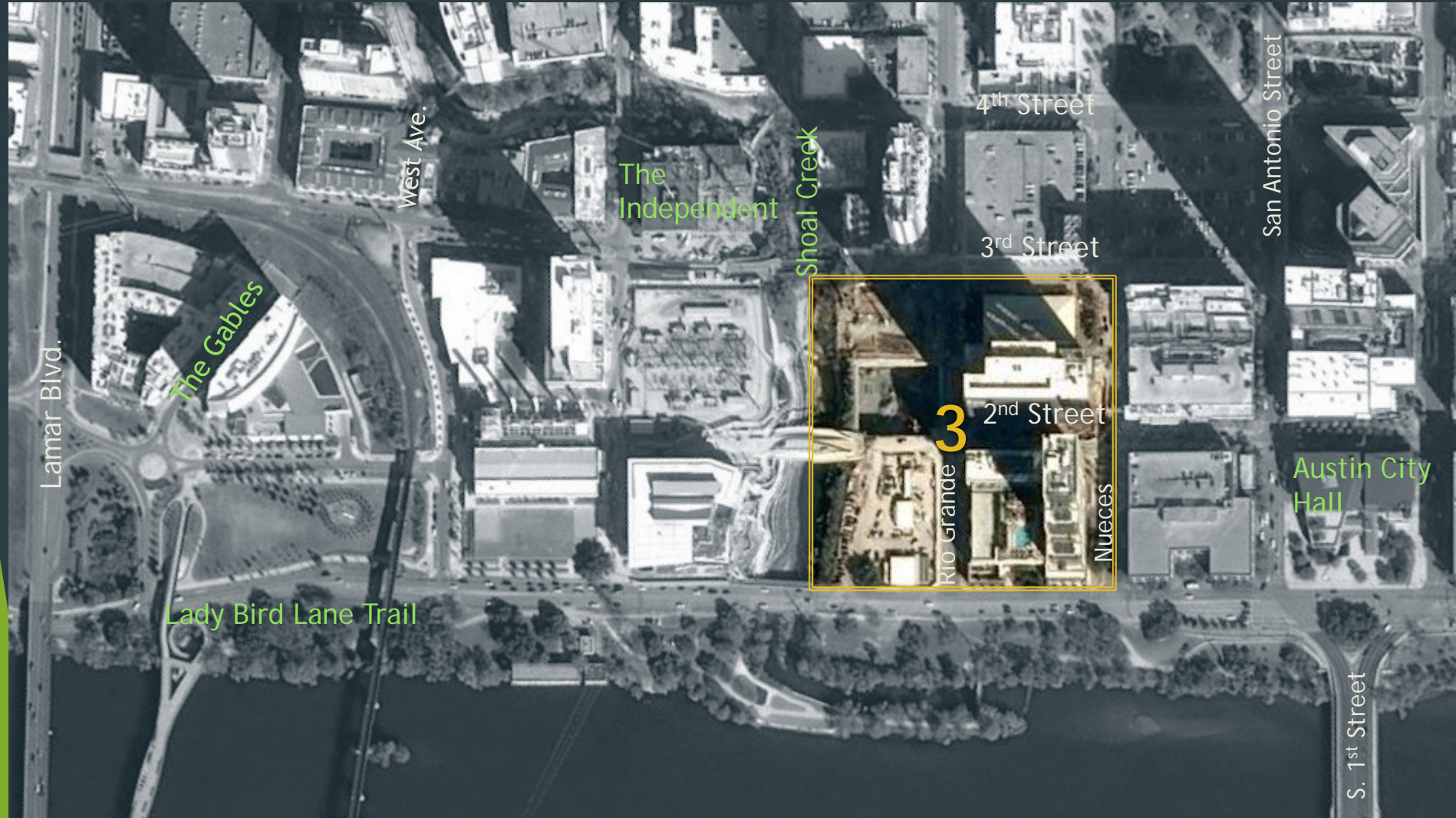
Adjacent Project Sites



1. Seaholm Power Plant Redevelopment
2. **Austin Central Library**
3. Green Water Treatment Plant Redevelopment
4. Seaholm Electrical Substation Art Wall
5. Lance Armstrong Bikeway
6. Shoal Creek Trail

Adjacent Project Sites

1. Seaholm Power Plant Redevelopment
2. Austin Central Library
3. Green Water Treatment Plant Redevelopment
4. Seaholm Electrical Substation Art Wall
5. Lance Armstrong Bikeway
6. Shoal Creek Trail



Adjacent Project Sites

1. Seaholm Power Plant Redevelopment
2. Austin Central Library
3. Green Water Treatment Plant Redevelopment
4. **Seaholm Electrical Substation Art Wall**
5. Lance Armstrong Bikeway
6. Shoal Creek Trail



Adjacent Project Sites

1. Seaholm Power Plant Redevelopment
2. Austin Central Library
3. Green Water Treatment Plant Redevelopment
4. Seaholm Electrical Substation Art Wall
5. Lance Armstrong Bikeway
6. Shoal Creek Trail



Adjacent Project Sites

1. Seaholm Power Plant Redevelopment
2. Austin Central Library
3. Green Water Treatment Plant Redevelopment
4. Seaholm Electrical Substation Art Wall
5. Lance Armstrong Bikeway
6. Shoal Creek Trail



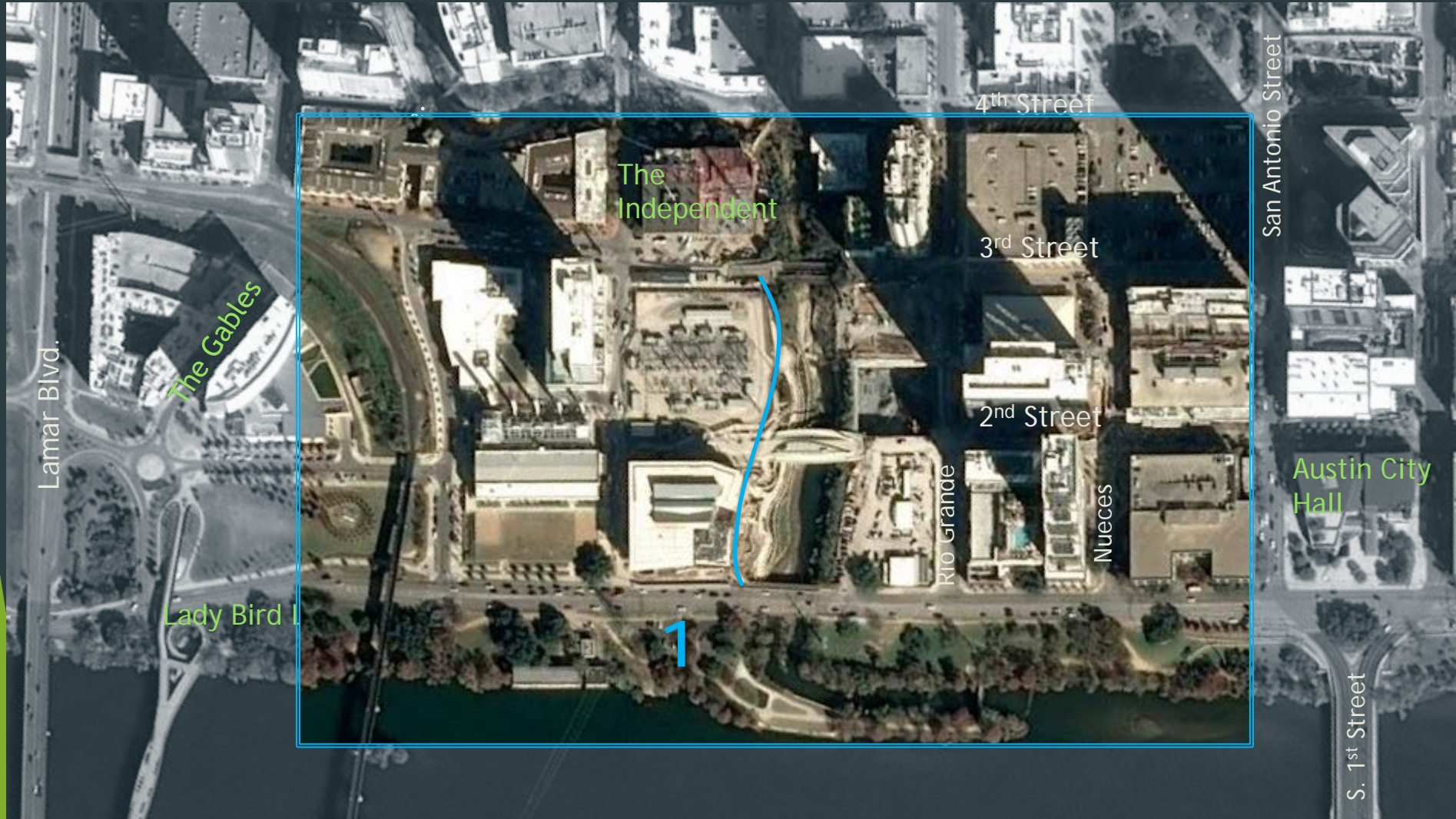
Adjacent Project Sites

1. Seaholm Power Plant Redevelopment
2. Austin Central Library
3. Green Water Treatment Plant Redevelopment
4. Seaholm Electrical Substation Art Wall
5. Lance Armstrong Bikeway
6. Shoal Creek Trail



The Finishing Stitch

The Remata



1. 2nd Street Park

- ▶ Lance Armstrong Bike Trail + Shoal Creek Trail

- ▶ Streambank Restoration

2. Second Street

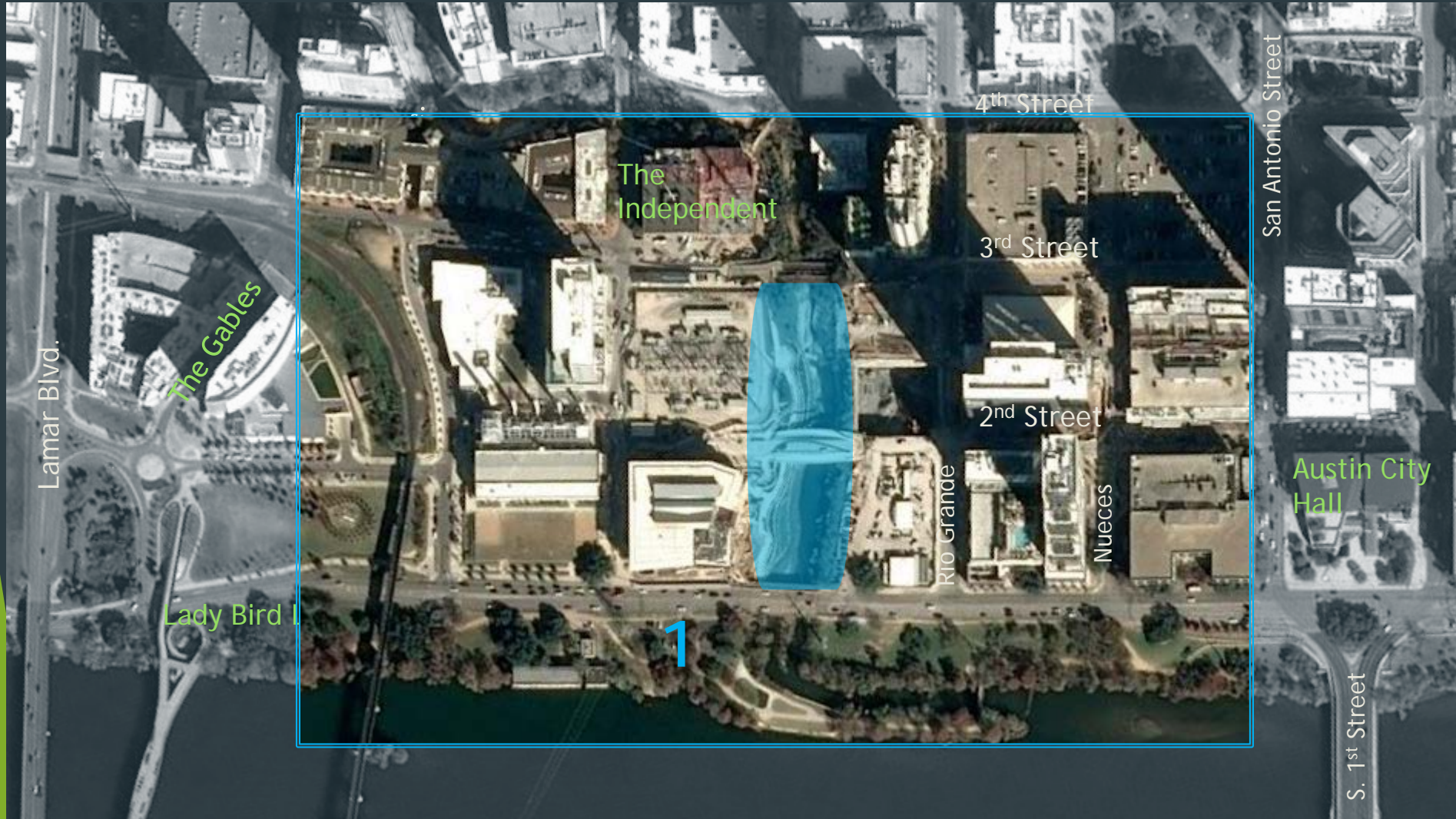
- ▶ Woonerf (Festival Street)

- ▶ Second Street Bridge



The Finishing Stitch

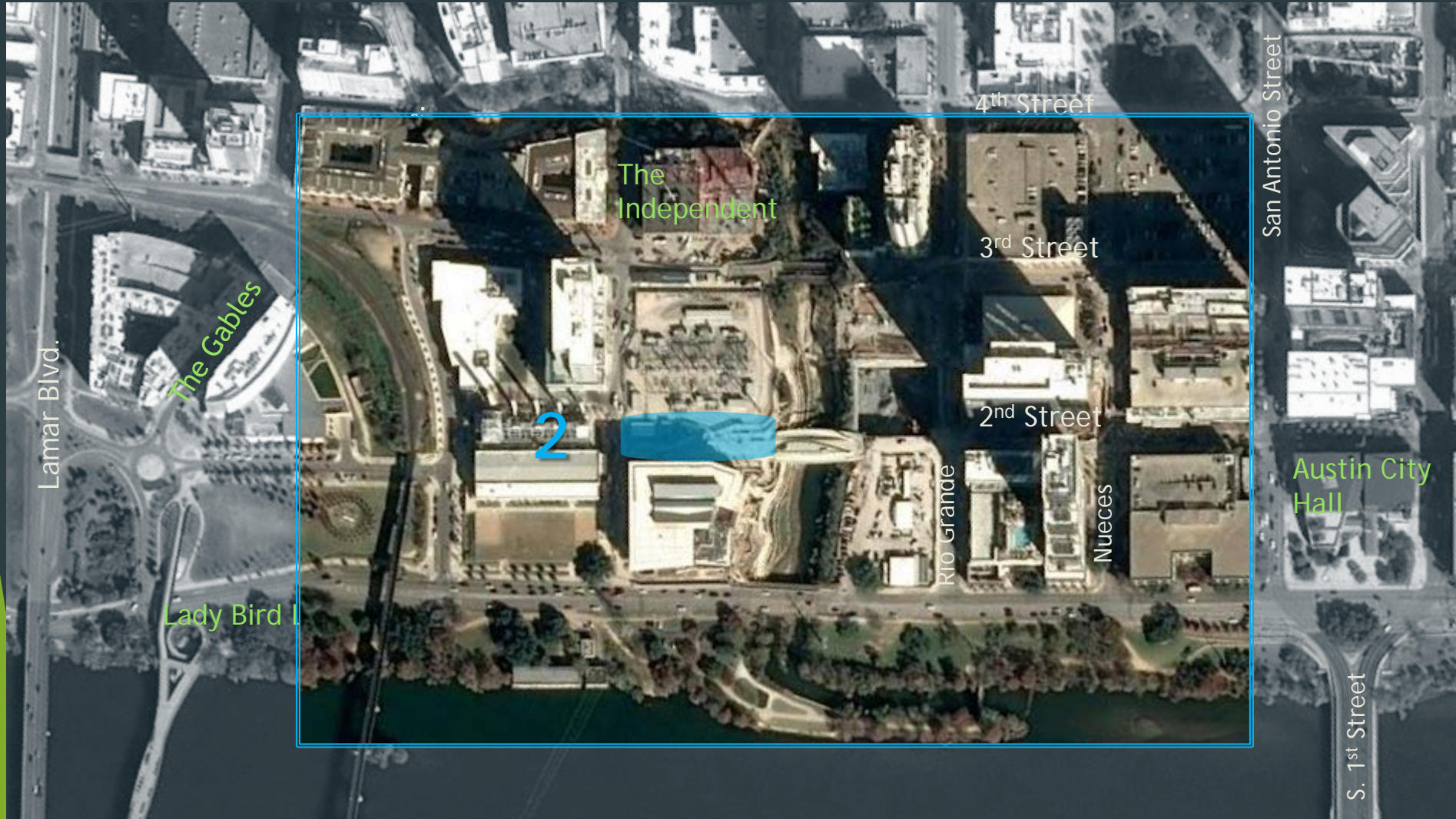
The Remata



1. 2nd Street Park
 - ▶ Lance Armstrong Bike Trail + Shoal Creek Trail
 - ▶ Streambank Restoration
2. Second Street
 - ▶ Woonerf (Festival Street)
 - ▶ Second Street Bridge

The Finishing Stitch

The Remata



1. 2nd Street Park

- ▶ Lance Armstrong Bike Trail + Shoal Creek Trail
- ▶ Streambank Restoration

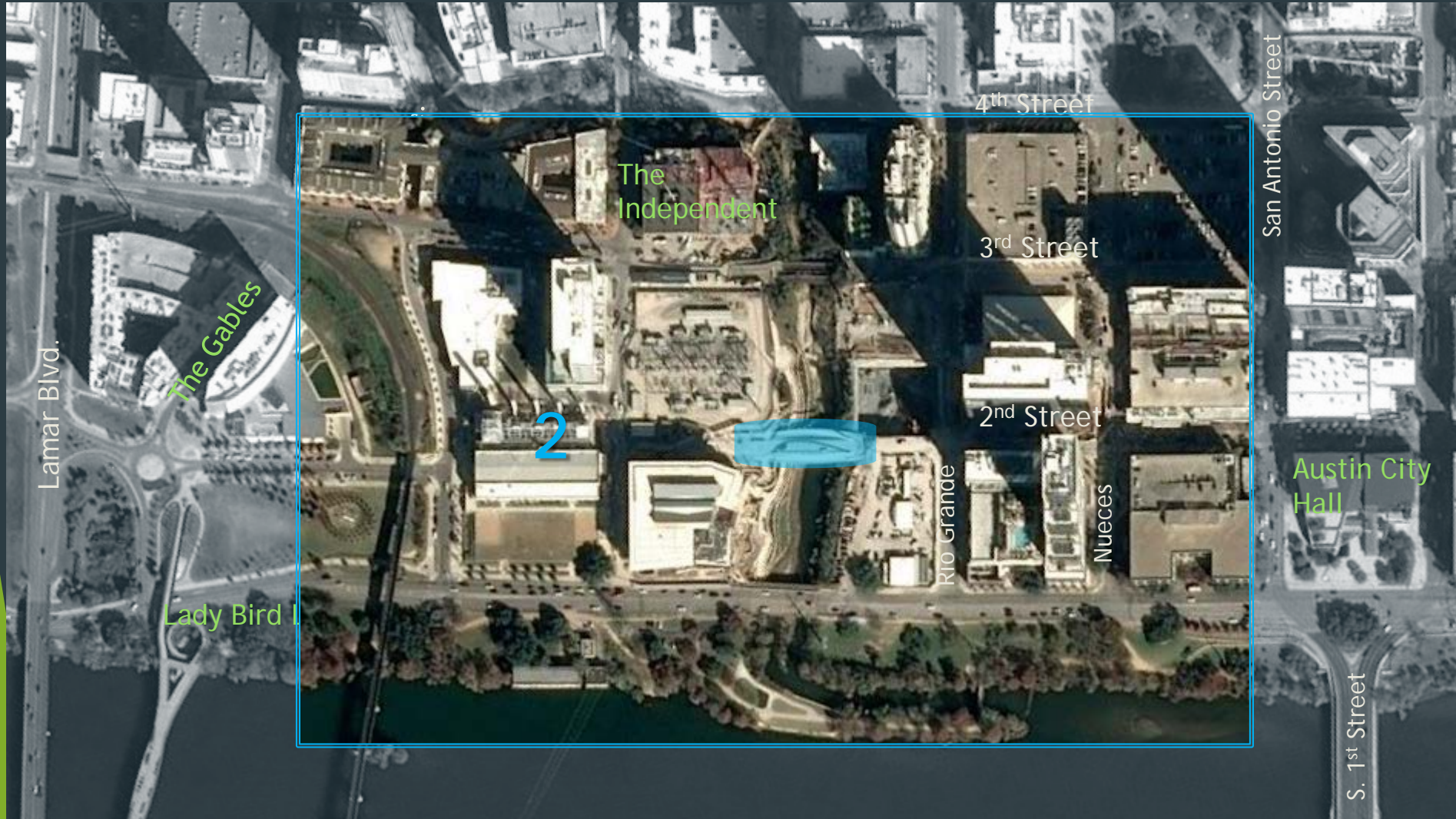
2. Second Street

- ▶ Woonerf (Festival Street)
- ▶ Second Street Bridge



The Finishing Stitch

The Remata



1. 2nd Street Park

- ▶ Lance Armstrong Bike Trail + Shoal Creek Trail
- ▶ Streambank Restoration

2. Second Street

- ▶ Woonerf (Festival Street)
- ▶ Second Street Bridge



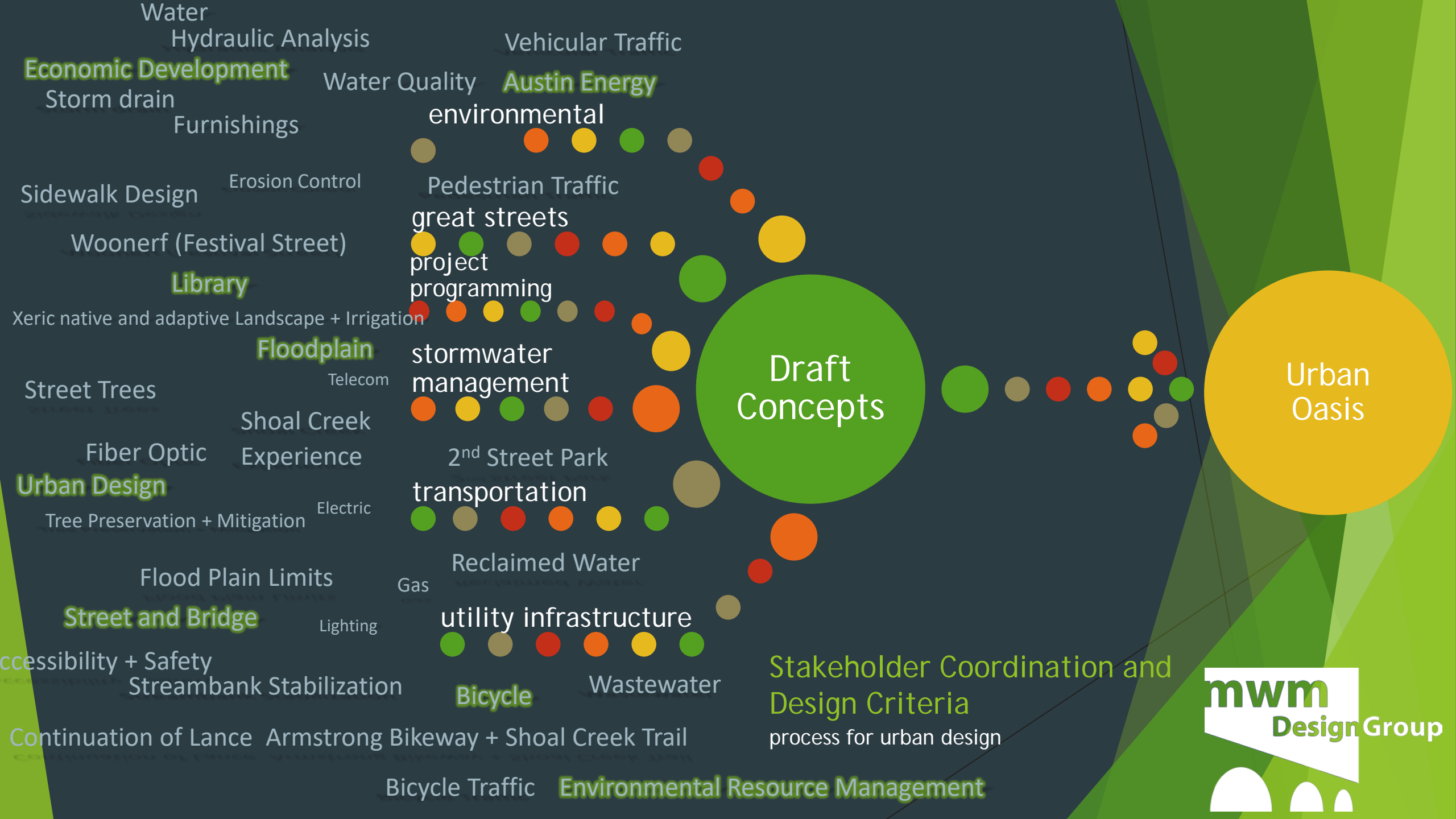
Stakeholder Coordination & Design Criteria

seams of the seaholm district

challenges designing urban landscapes

mwm
Design Group

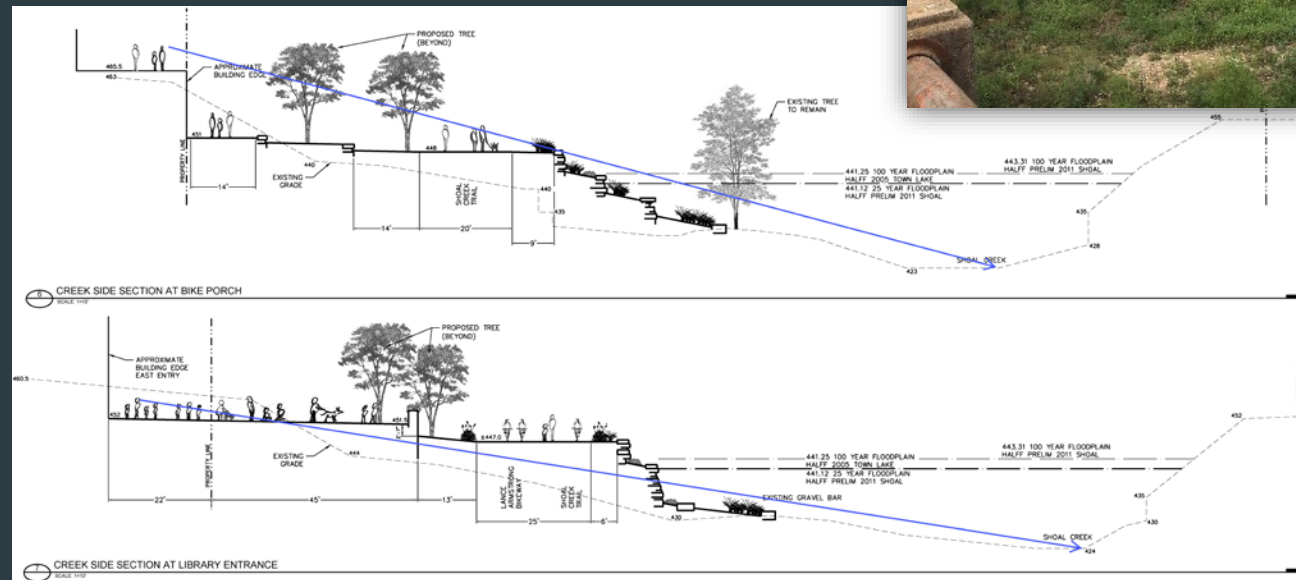




Challenge + Solution

project example

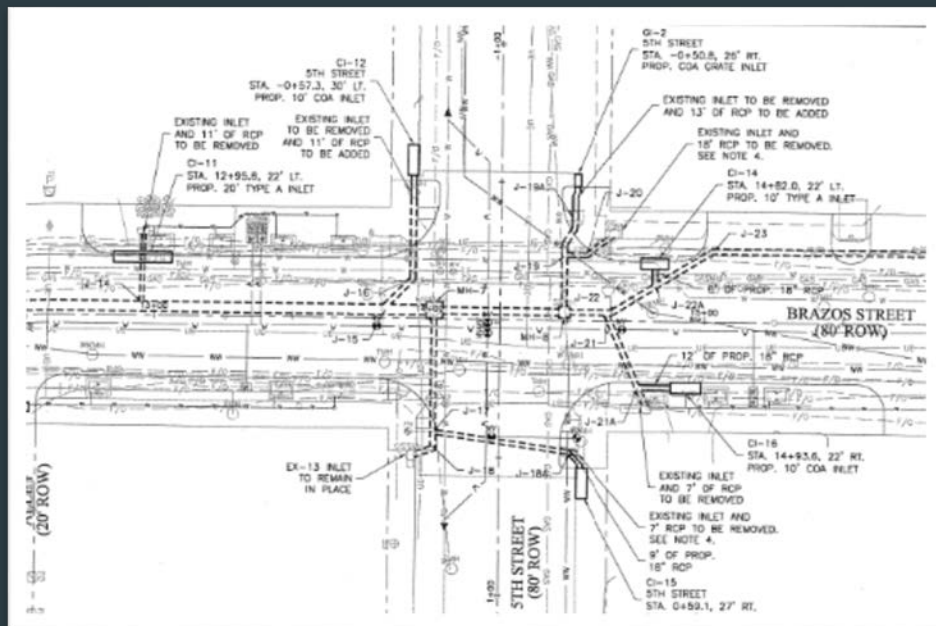
- ▶ Line of Sight
- ▶ Flood Criteria



Challenge + Solution

project example

- ▶ Utilities
- ▶ Trees & Planters



Design Elements

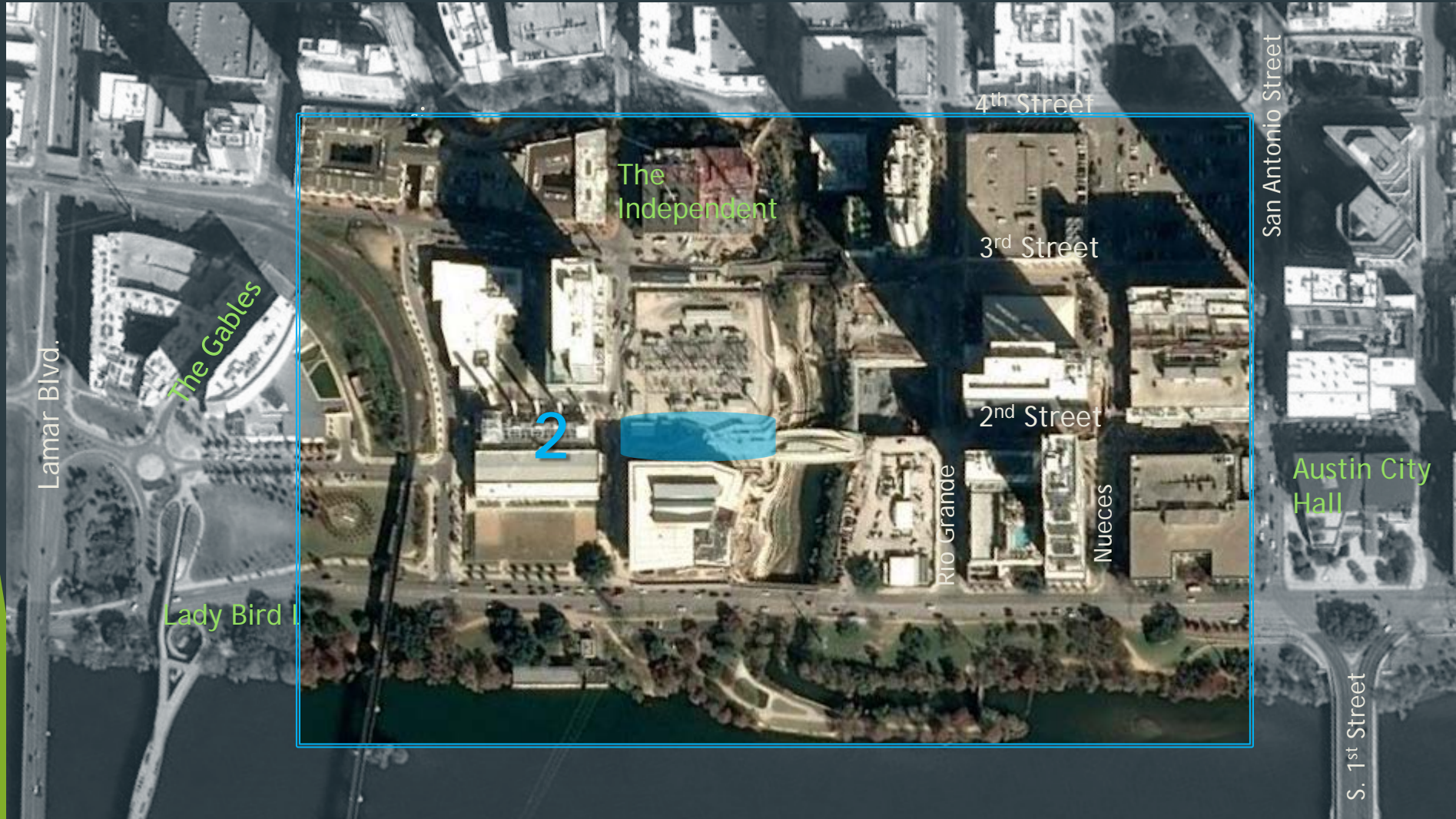
the fabric of good design

challenges designing urban landscapes

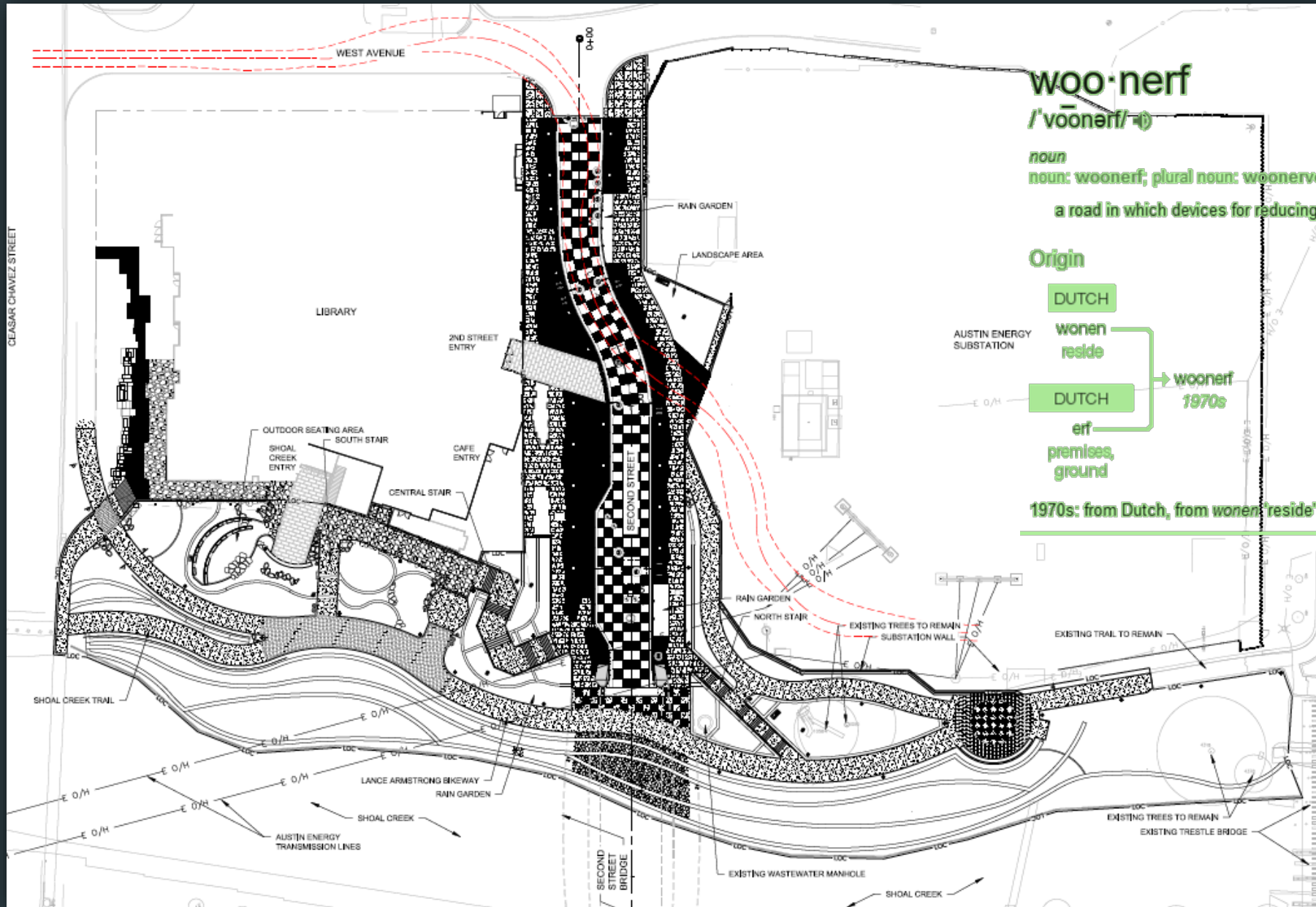


The Finishing Stitch

The Remata



1. 2nd Street Park
 - ▶ Lance Armstrong Bike Trail + Shoal Creek Trail
 - ▶ Streambank Restoration
2. Second Street
 - ▶ Woonerf (Festival Street)
 - ▶ Second Street Bridge



woon·erf

/'vōonərf/

noun

noun: woonerf; **plural noun:** woonerven; **plural noun:** woonerfs

a road in which devices for reducing or slowing the flow of traffic have been installed

Origin

DUTCH

wonen
reside

DUTCH

erf
premises,
ground

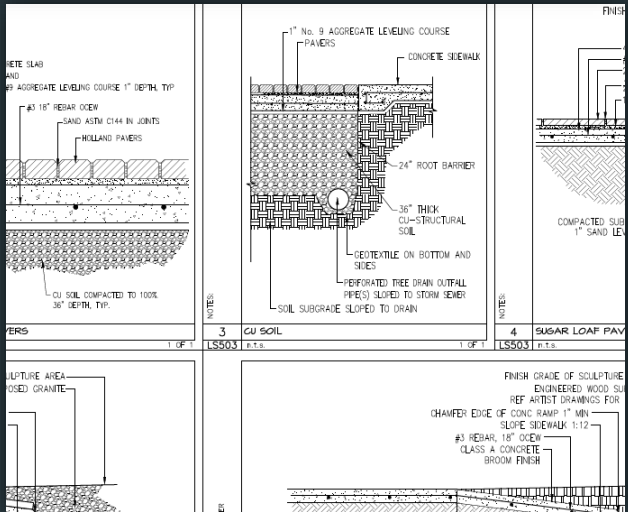
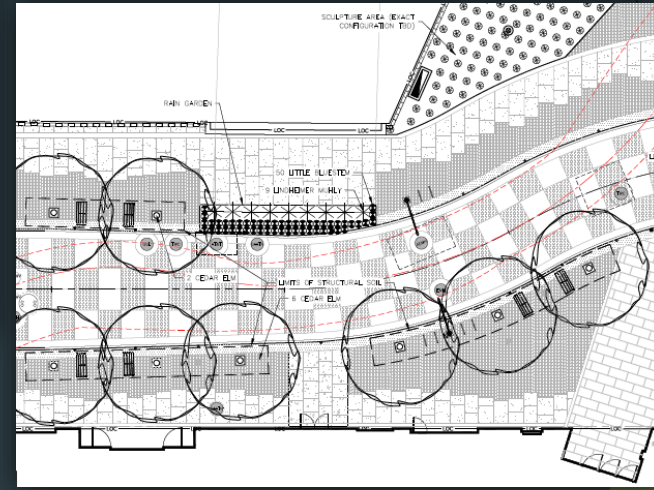
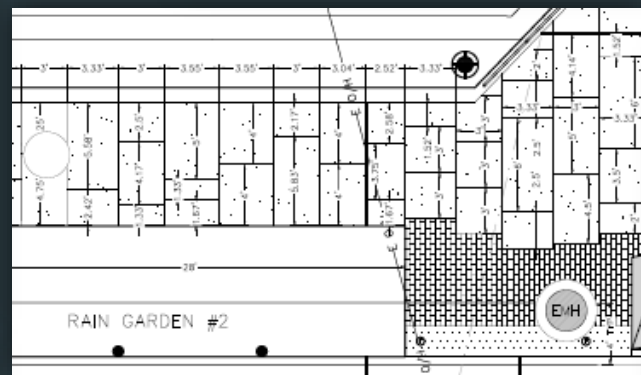
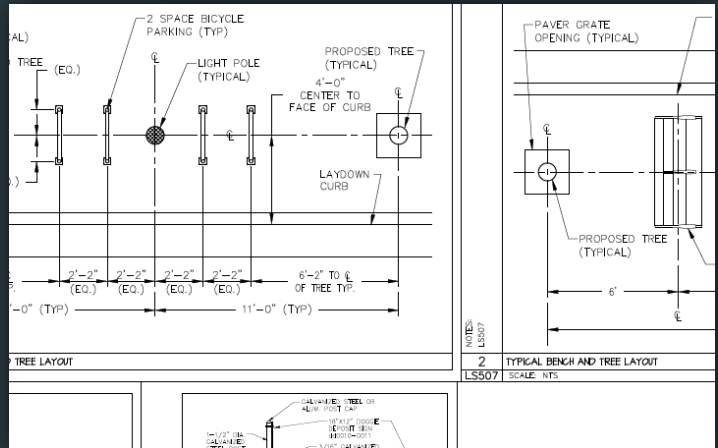
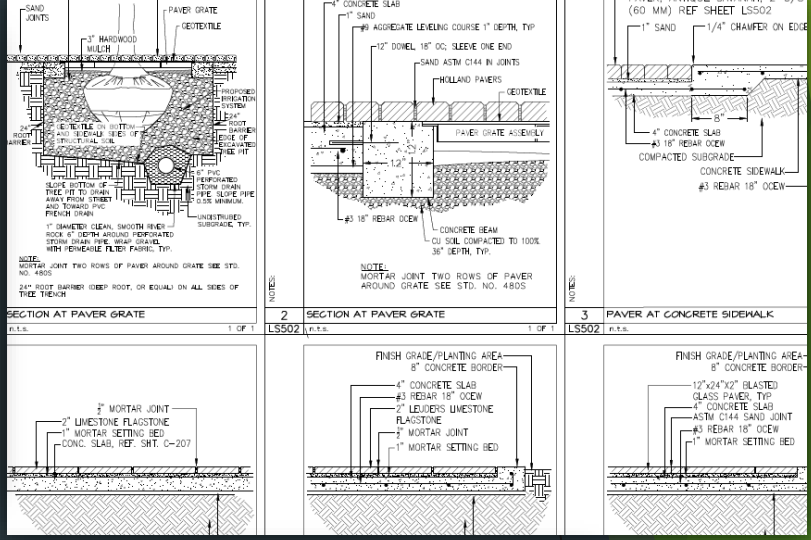
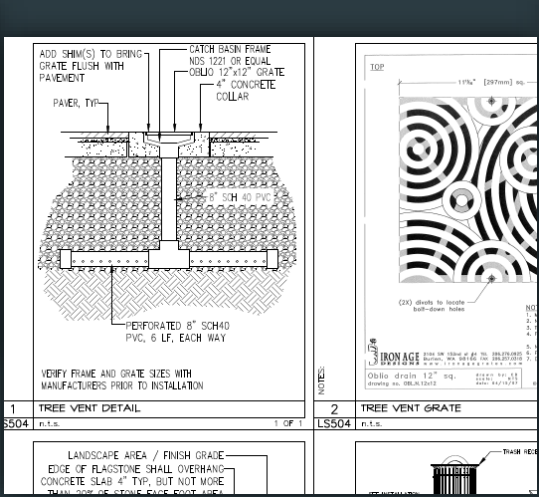
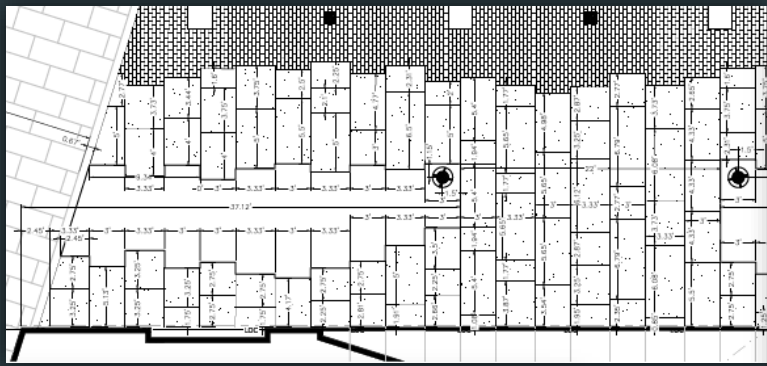
→ woonerf
1970s

1970s: from Dutch, from *wonen* 'reside' + *erf* 'premises, ground.'

2nd Street Woonerf

slow down, enjoy

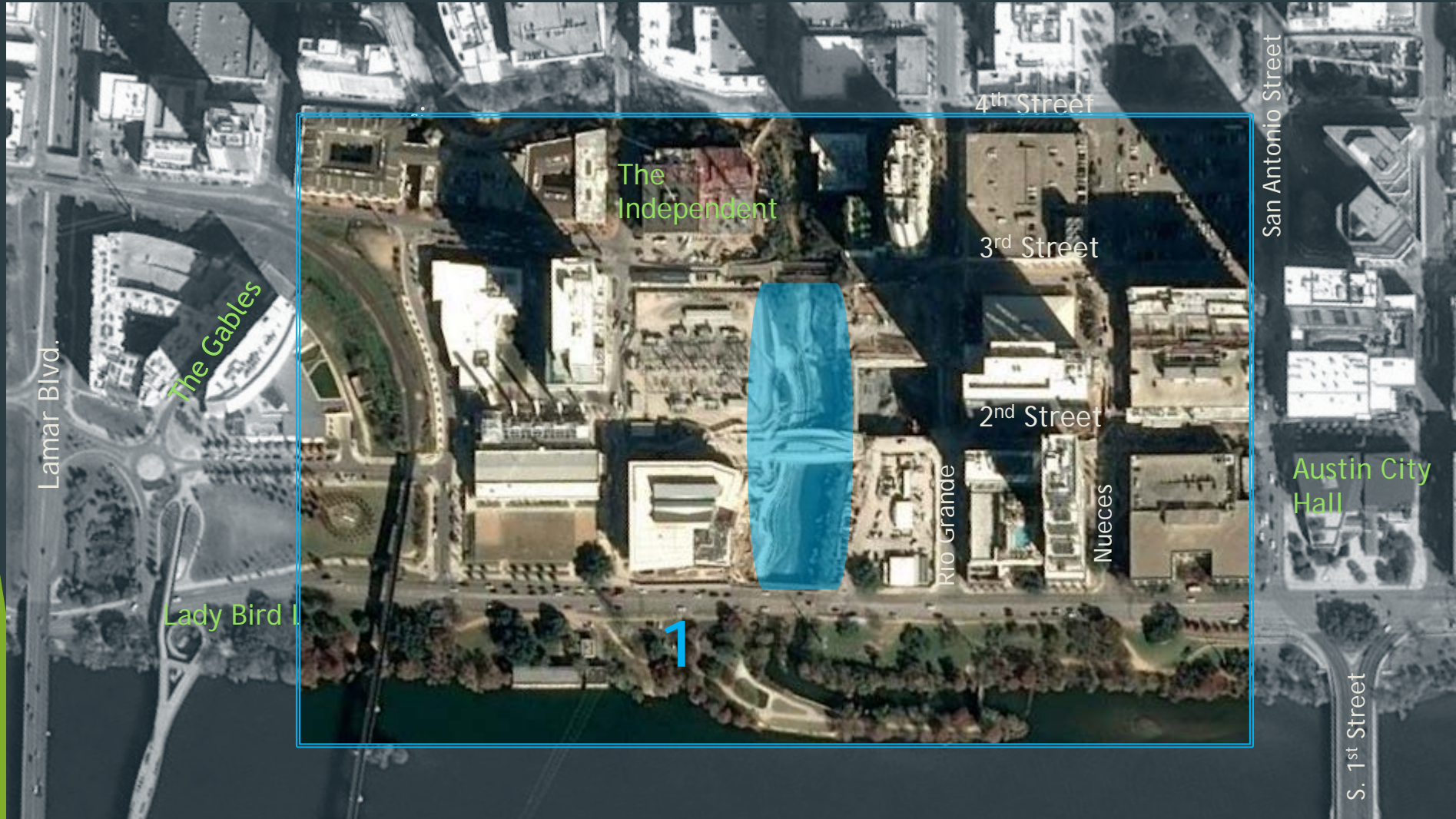




2nd Street Woonerf
the details behind the beauty

Streambank Stabilization

Enhancing the Environment



1. 2nd Street Park
 - ▶ Lance Armstrong Bike Trail + Shoal Creek Trail
 - ▶ Streambank Restoration
2. Second Street
 - ▶ Woonerf (Festival Street)
 - ▶ Second Street Bridge

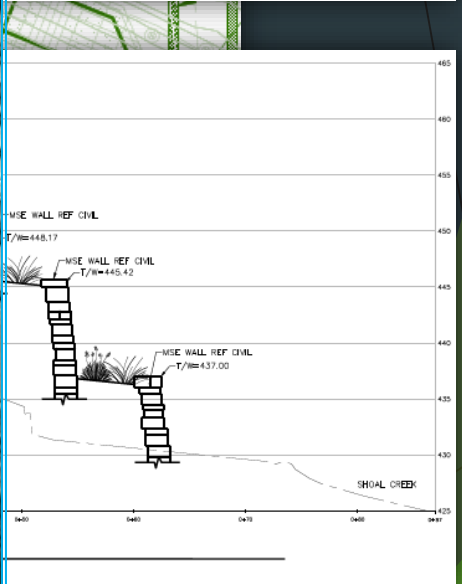
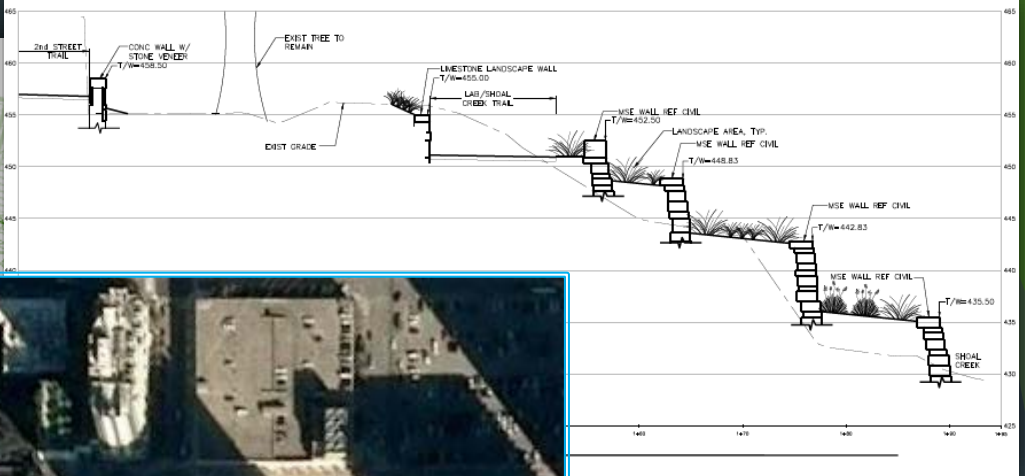
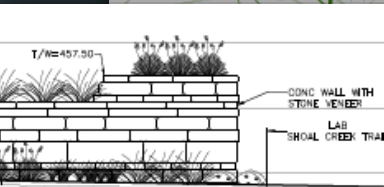
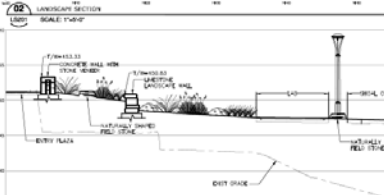
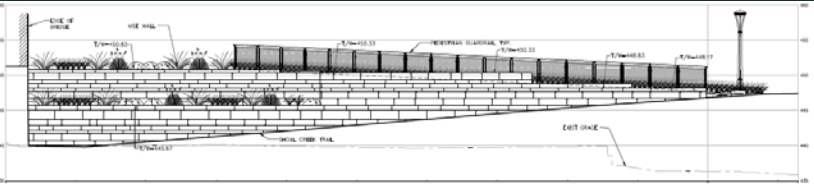




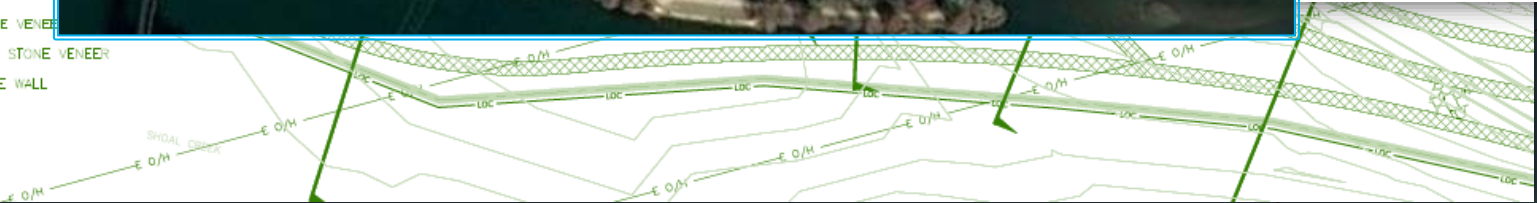
Streambank Stabilization

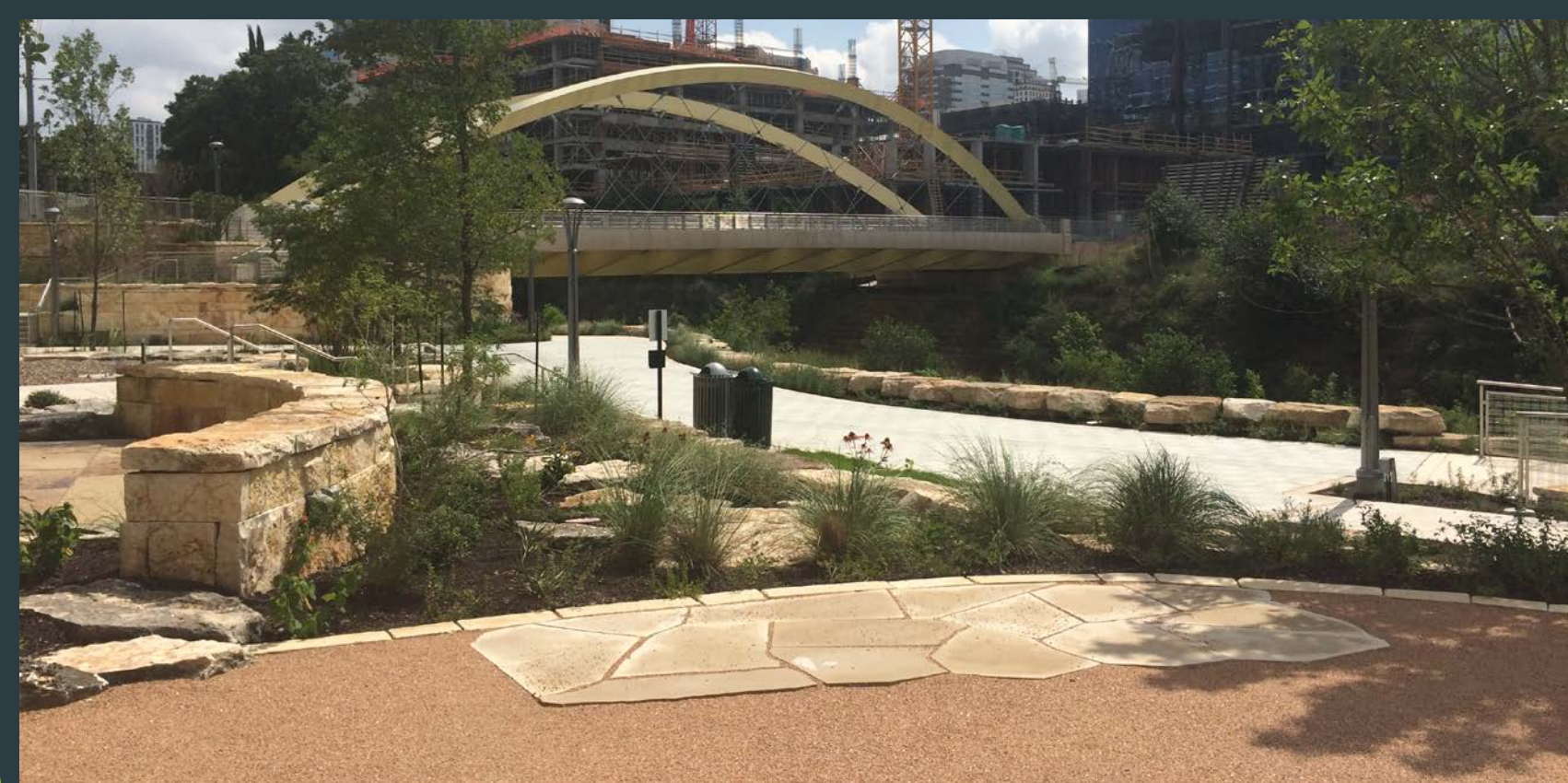


Streambank Stabilization

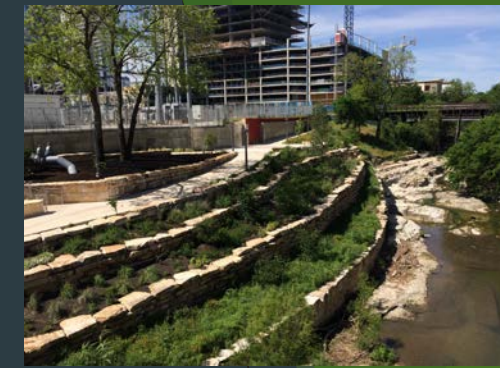


- MSE WALL WITH STONE VENEER
- CONCRETE WALL WITH STONE VENEER
- LIMESTONE LANDSCAPE WALL





Streambank Stabilization



2nd Street Extension Butterfly Bridge 2nd Street Park

The Remata, The final Stitch

We've been fortunate to have a lot of help along the way from our design teams, city staff and design teams on adjacent projects

City Staff including: Greg Kiloh, Fred Evins, Cindy Jordan, Humberto Rey, Kevin Sweat, Bimal Adhikary, D'Anne Williams, Jose Ibarra, Chad Crager, John Gillum, Heidi Tse, Kevin Shunk, Darcy Nuffer, Morgan Byers, Mike Kelly, Sue Lambe

Design teams: Lake|Flato + Shepley Bulfinch (Library), AECOM (Bridge) and NADAAA (Substation)

Project Art: NADAAA (*Power Picket*), Sharon Engelstein (*Crullers*), Judd Graham (*Array*), Jim Brenner (*Dragonfly*), Chris Gannon (*Wanderer*)

challenges designing urban landscapes





2nd Street + Bridge and 2nd Street Park

The Remata, The Finishing Stitch

