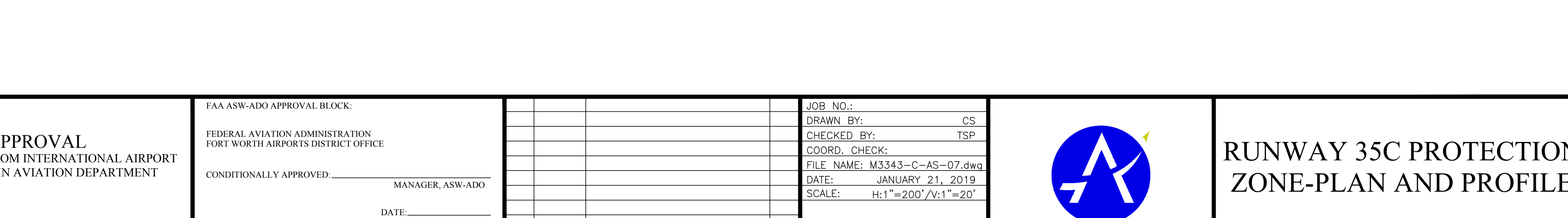
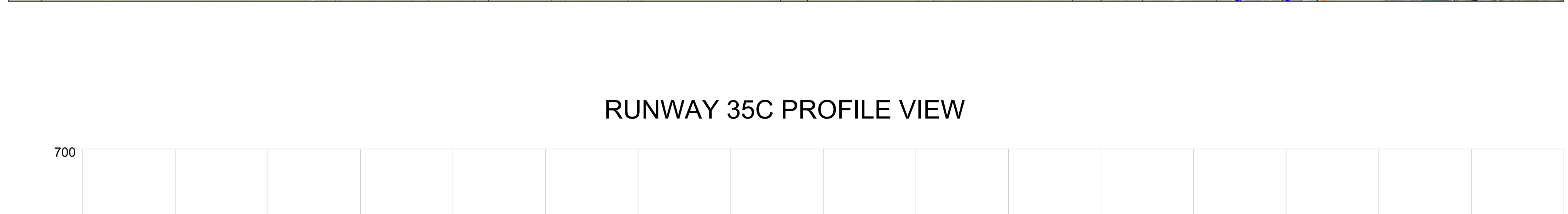


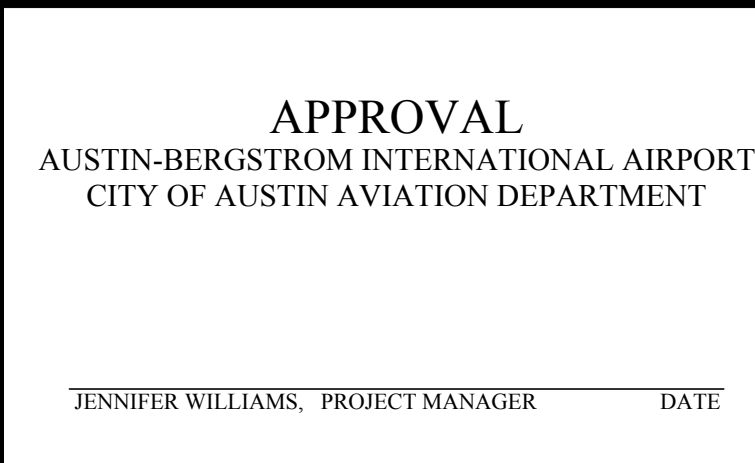
A. PER FAR PART 77.23(B), THE FOLLOWING TRAVERSE WAYS MUST BE INCREASED BY: 10' FOR A (P)RIVATE ROAD, 15' FOR A (N)ON INTERSTATE, 17' FOR AN (I)NTERSTATE, AND 23' FOR (R)AILROADS.
B. EACH ROADWAY OR RAILROAD IN THE OBSTACLE DATA SHEET SHOULD INCLUDE THE APPROPRIATE (P), (N), (I), OR (R) DESIGNATION AFTER THE DESCRIPTION.
C. SOURCE: OBSTRUCTION DATA FROM 2017 18B SURVEY BY AECOM



NOTES:

1. USED NAD 83 STATE PLANE COORDINATE SYSTEM
2. NAVD83 VERTICAL CONTROL DATUM USED FOR ELEVATION
3. WAIVER OF DESIGN STANDARDS FOR PAVED OVERRUN AREA OF RUNWAY 17R
ISSUED JUNE 15, 1995.
4. AIRPORT ELEVATION: 541.5' NAVD83 (MSL)

DRAFT



No.	DATE	ISSUE	By



Austin-Bergstrom
International Airport

RUNWAY 35C PROTECTION ZONE-PLAN AND PROFILE