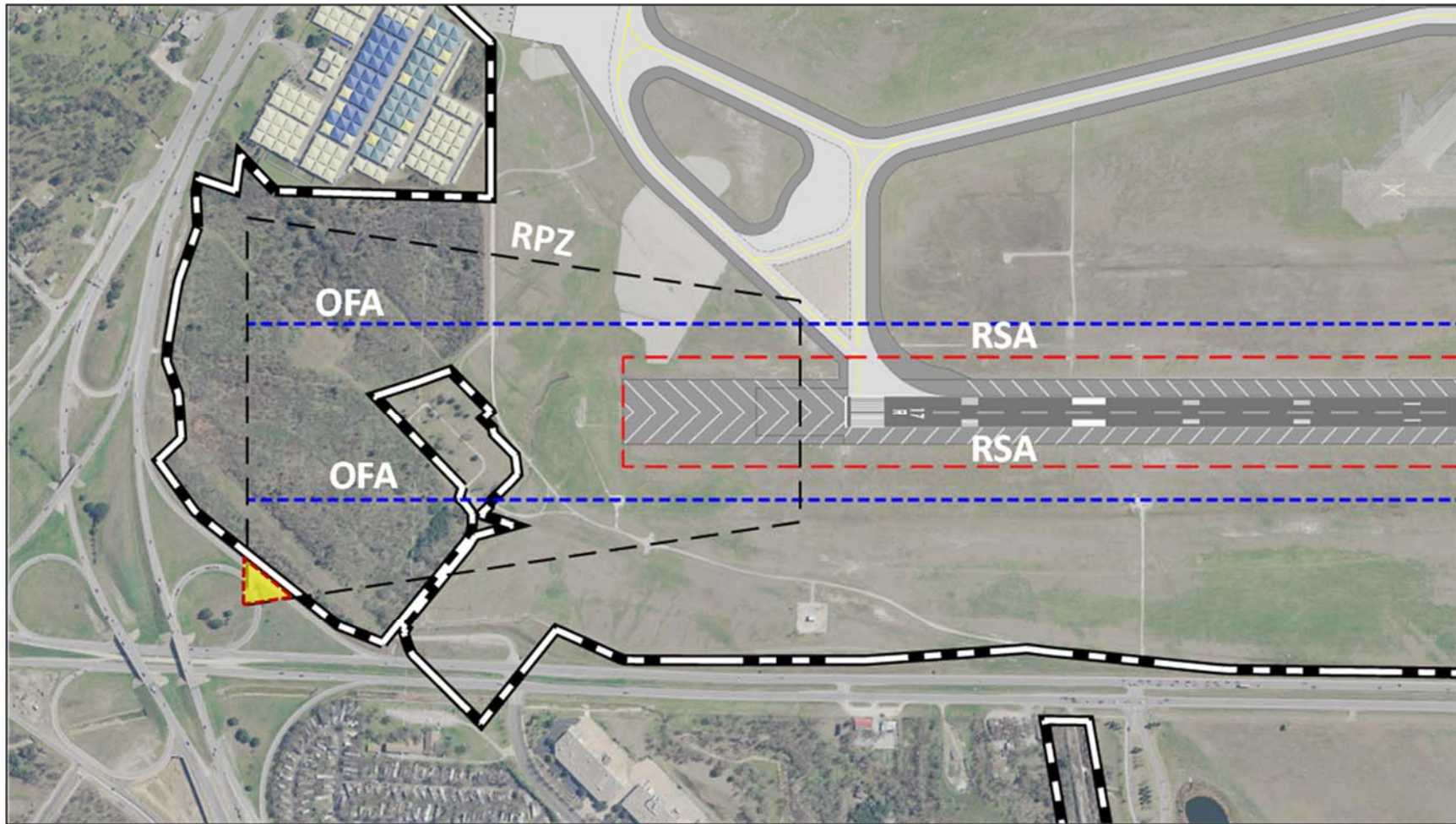


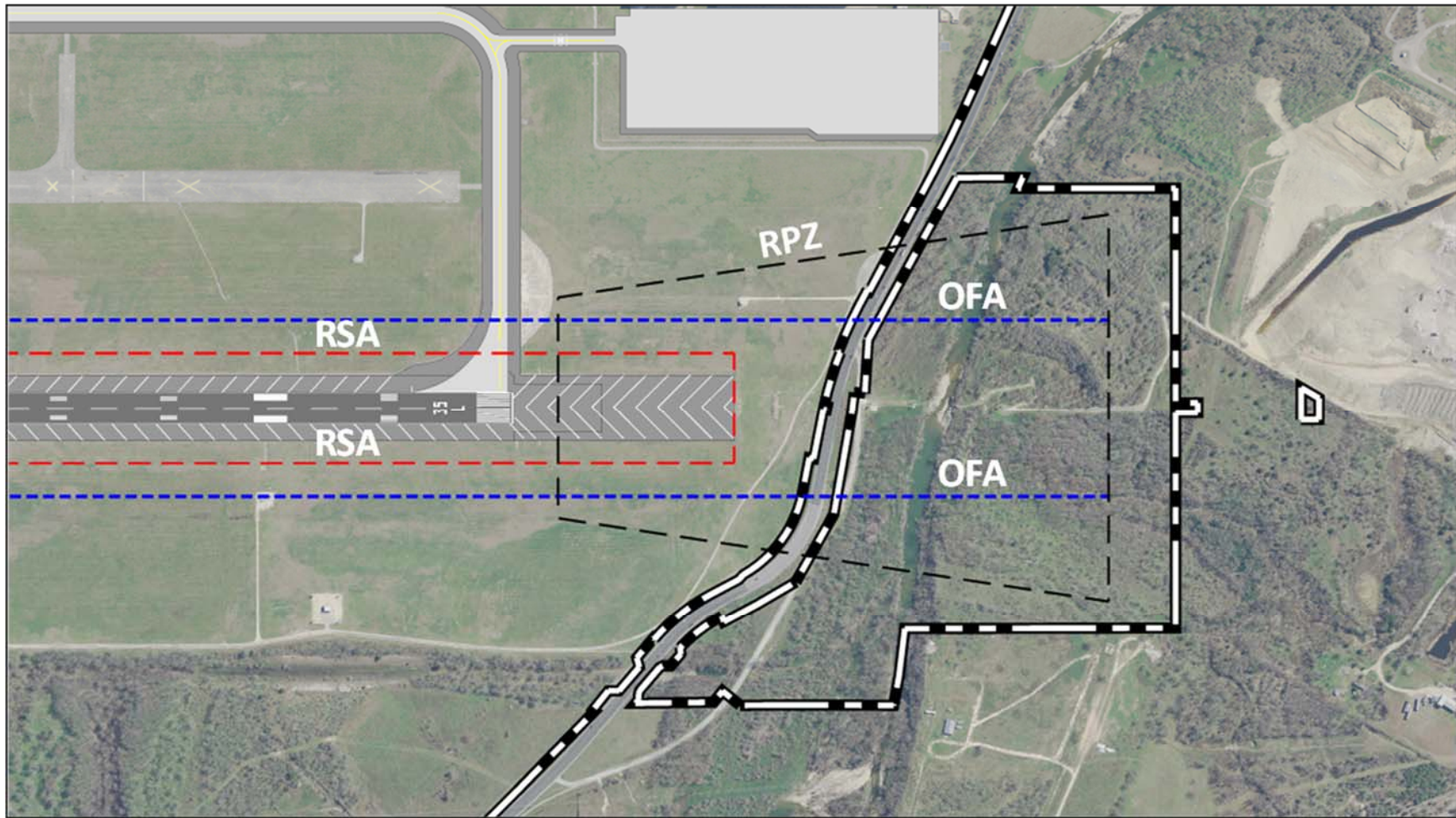


Appendix 6.5: SRM PANEL HAZARD REVIEW REVISED REFERENCE DRAWINGS

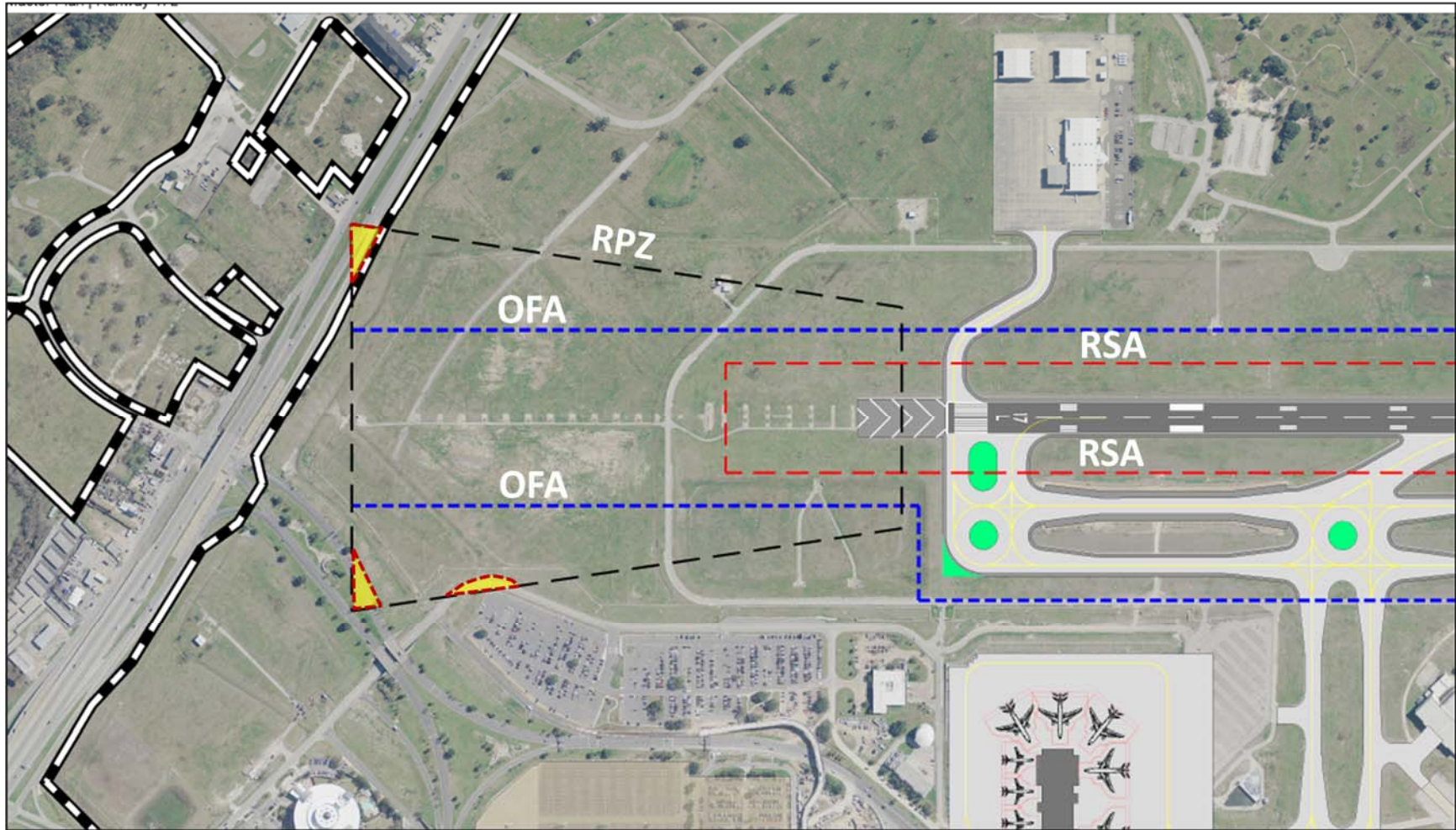


Exhibit A6.1-1: 17R RPZ, RSA, and OFA

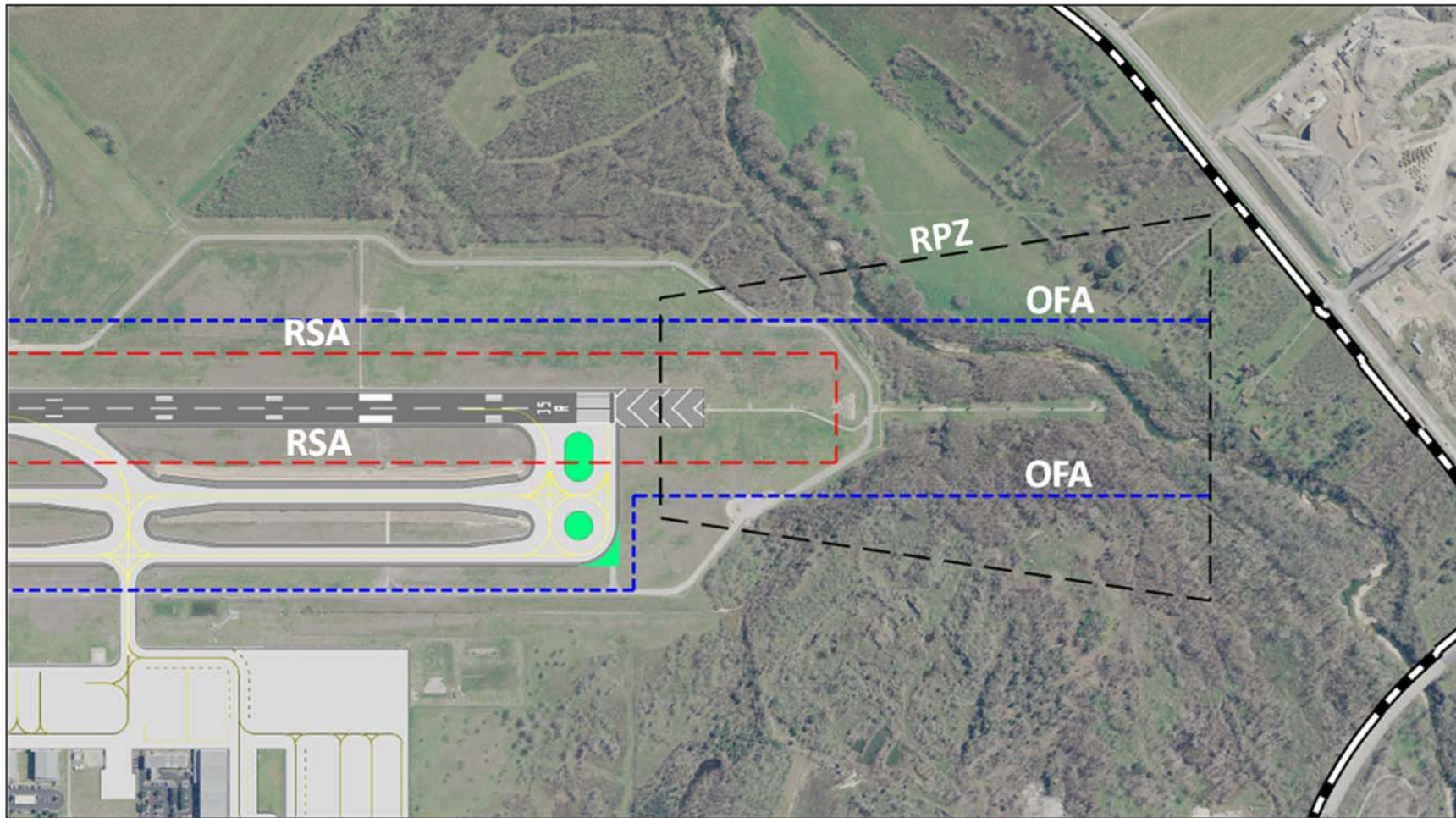
Source: Landrum & Brown analysis

Exhibit A6.1-2: 35L RPZ, RSA, and OFA

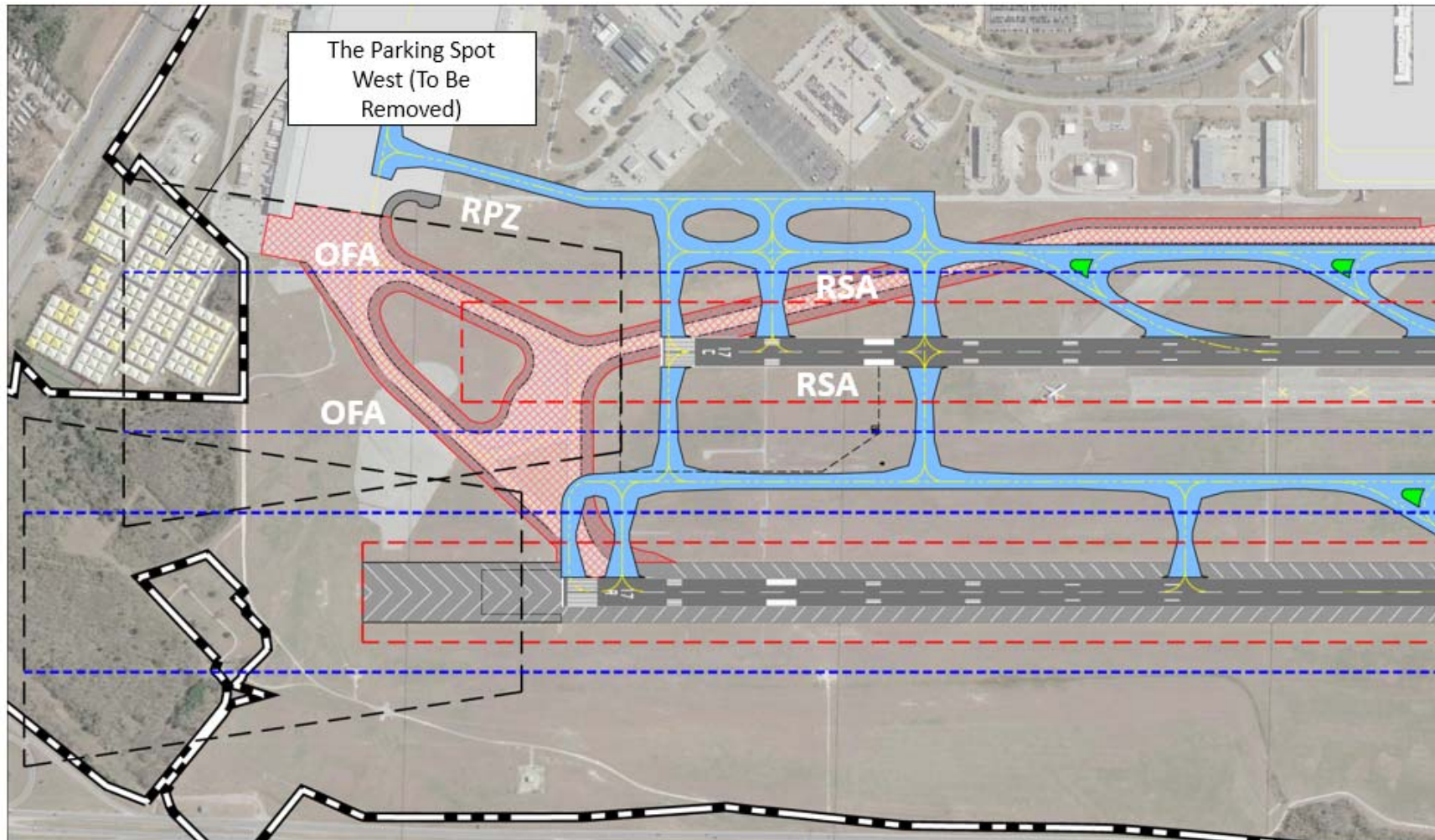
Source: Landrum & Brown analysis

Exhibit A6.1-3: 17L RPZ, RSA, and OFA

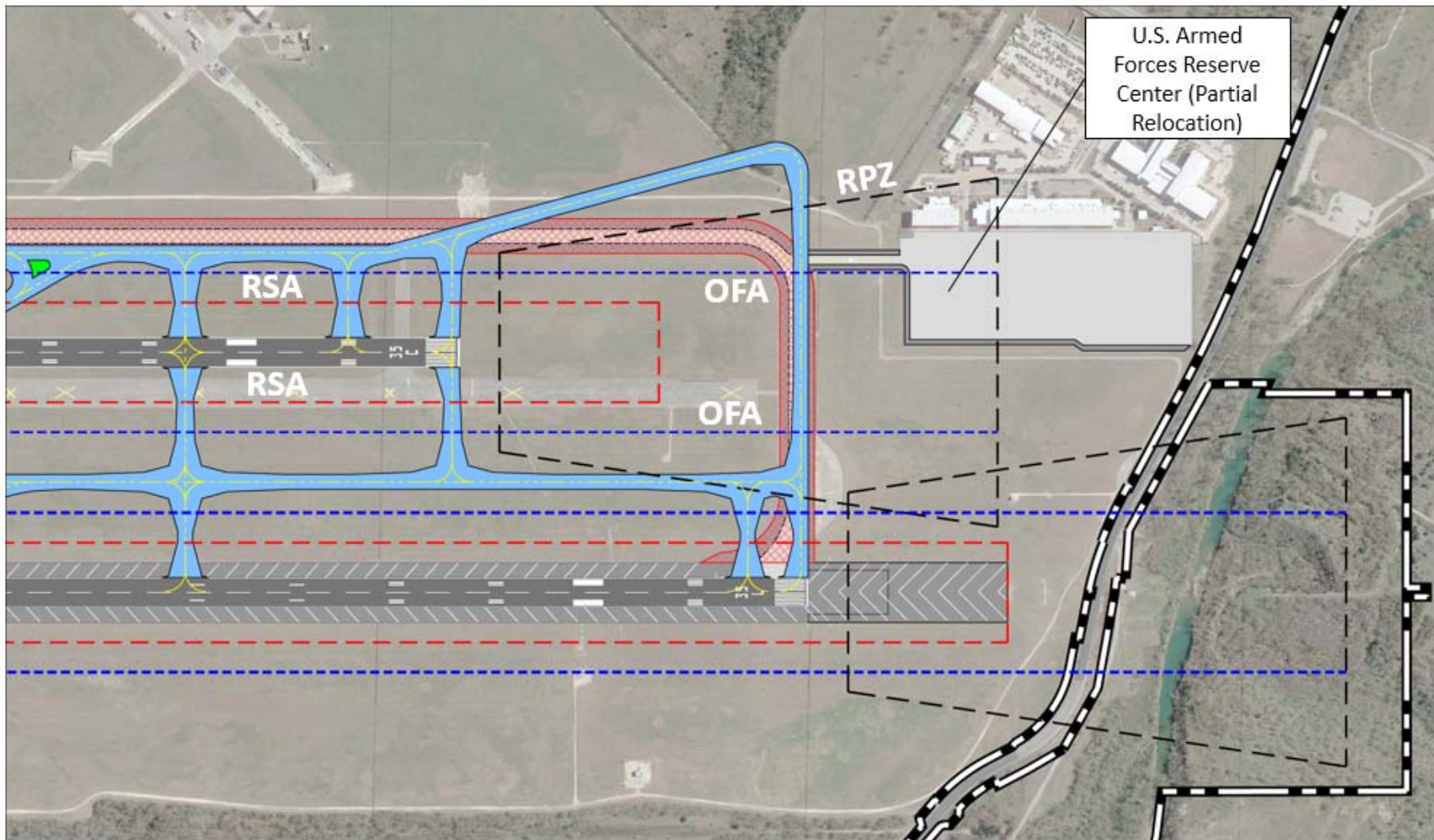
Source: Landrum & Brown analysis

Exhibit A6.1-4: 35R RPZ, RSA, and OFA

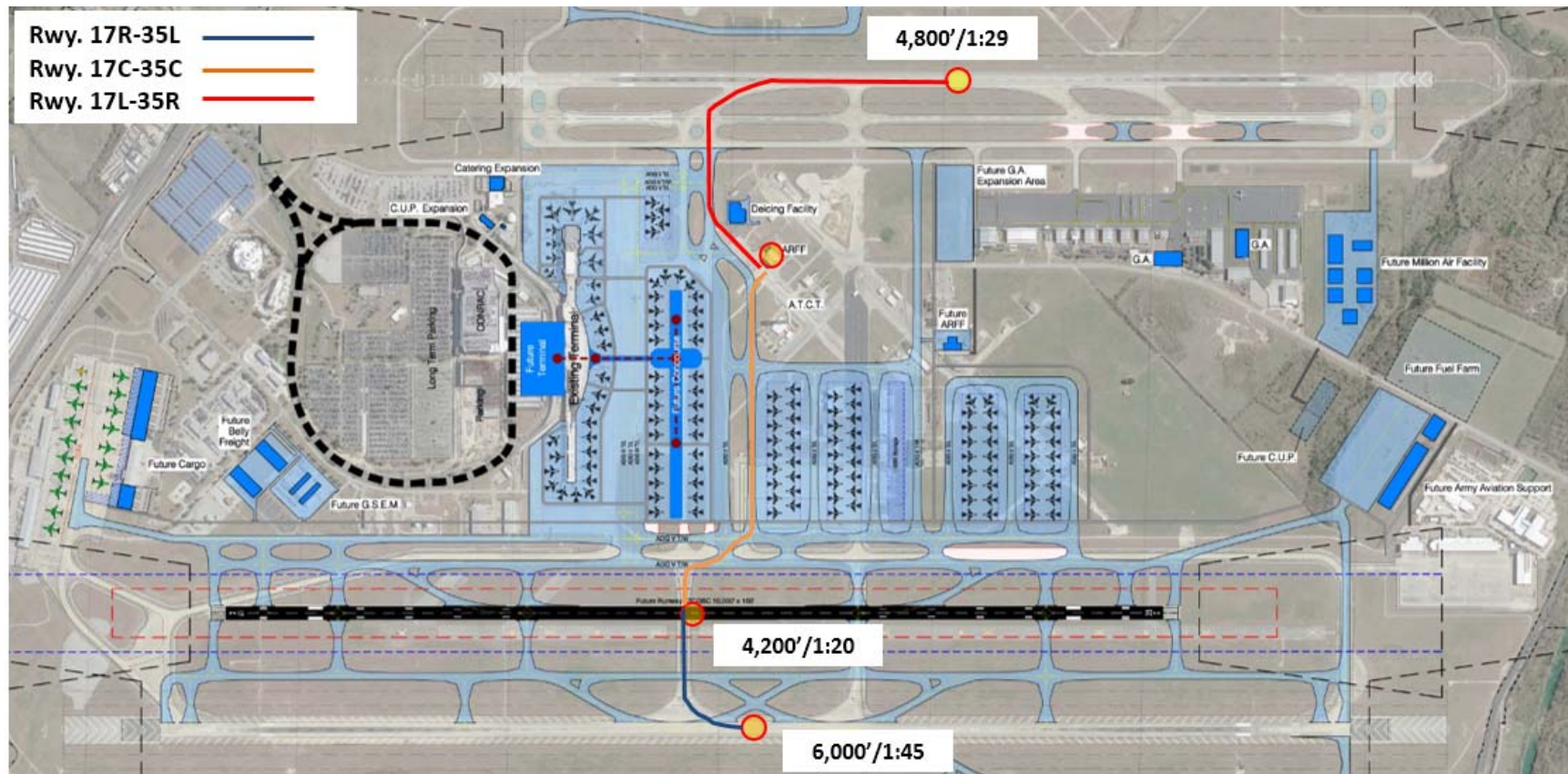
Source: Landrum & Brown analysis

Exhibit A6.1-5: 17C RPZ, RSA, and OFA

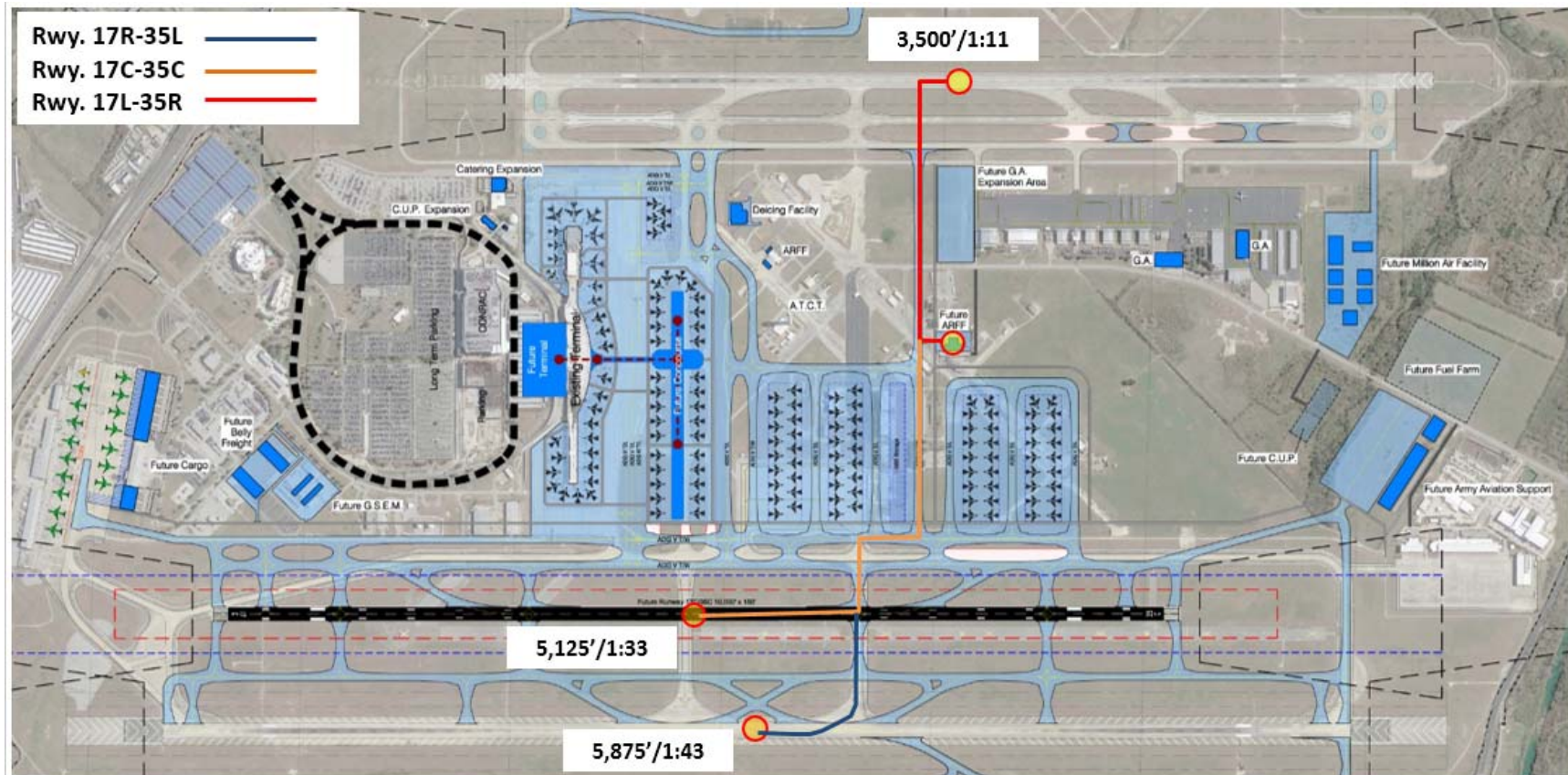
Source: Landrum & Brown analysis

Exhibit A6.1-6: 35C RPZ, RSA, and OFA

Note: this drawing will be updated with the hangar located on the south side of the ramp prior to the final version
Source: Landrum & Brown analysis

Exhibit A6.1-7: Existing ARFF Response Routes and Times

Source: Landrum & Brown analysis

Exhibit A6.1-8: Future ARFF Station Response Routes and Times

Source: Landrum & Brown analysis