

**Austin-Bergstrom International Airport
Aviation Activity Report
Calendar Year 2017 vs 2016**

Combined Terminals

	4/2017	4/2016	Percent Change	01/2017 - 04/2017	01/2016 - 04/2016	Percent Change
ABIA						
Total Passenger Activity						
Domestic Enplaned Revenue	535,065	496,660	7.73	1,934,738	1,811,966	6.78
Domestic Deplaned Revenue	522,207	485,794	7.50	1,944,527	1,827,891	6.38
International Enplaned Revenue	11,635	9,297	25.15	42,101	33,179	26.89
International Deplaned Revenue	11,118	9,429	17.91	42,462	35,183	20.69
Domestic Enplaned Non-Revenue	13,578	10,190	33.25	49,009	41,914	16.93
Domestic Deplaned Non-Revenue	13,027	13,226	-1.51	47,152	43,690	7.92
International Enplaned Non-Revenue	84	105	-20.00	323	392	-17.60
International Deplaned Non-Revenue	98	87	12.64	295	378	-21.96
Intl Enplaned Pre-Cleared Revenue	1,862	1,689	10.24	6,270	5,908	6.13
Intl Deplaned Pre-Cleared Revenue	1,885	1,784	5.66	6,740	6,545	2.98
Intl Enplaned Pre-Cleared Non-Revenue	25	35	-28.57	92	95	-3.16
Intl Deplaned Pre-Cleared Non-Revenue	36	41	-12.20	110	115	-4.35
South Terminal Domestic Enplaned Revenue	7,079	0	0	7,079	0	0
South Terminal Domestic Deplaned Revenue	6,926	0	0	6,926	0	0
South Terminal Domestic Enplaned Non-Revenue	0	0	0	0	0	0
South Terminal Domestic Deplaned Non-Revenue	0	0	0	0	0	0
ABIA Passenger Totals	1,124,625	1,028,337	9.36	4,087,824	3,807,256	7.37
<i>ABIA Enplaned Passenger Totals</i>	<i>569,328</i>	<i>517,976</i>	<i>9.91</i>	<i>2,039,612</i>	<i>1,893,454</i>	<i>7.72</i>
<i>ABIA Deplaned Passenger Totals</i>	<i>555,297</i>	<i>510,361</i>	<i>8.80</i>	<i>2,048,212</i>	<i>1,913,802</i>	<i>7.02</i>
<i>ABIA Domestic Passenger Totals</i>	<i>1,097,882</i>	<i>1,005,870</i>	<i>9.15</i>	<i>3,989,431</i>	<i>3,725,461</i>	<i>7.09</i>
<i>ABIA International Passenger Totals</i>	<i>26,743</i>	<i>22,467</i>	<i>19.03</i>	<i>98,393</i>	<i>81,795</i>	<i>20.29</i>

CURRENT PASSENGER RECORD = 1,165,811 RECORD SET = JULY 2015

Total Aircraft Operations

Air Carrier	10,079	9,486	6.25	38,272	36,975	3.51
Commuter & Air Taxi	1,416	1,239	14.29	5,264	4,926	6.86
Military	702	845	-16.92	3,328	3,422	-2.75
General Aviation						
Itinerant	4,320	4,002	7.95	17,141	16,136	6.23
Local	188	96	95.83	712	940	-24.26
Total G.A.	4,508	4,098	10	17,853	17,076	4.55
Total Operations	16,705	15,668	6.62	64,717	62,399	3.71

**Austin-Bergstrom International Airport
Aviation Activity Report
Calendar Year 2017 vs 2016**

By Terminal

	4/2017	4/2016	Percent Change	01/2017 - 04/2017	01/2016 - 04/2016	Percent Change
<u>Barbara Jordan Terminal (BJT)</u>						
Passenger Activity						
Domestic Enplaned Revenue	535,065	496,660	7.73	1,934,738	1,811,966	6.78
Domestic Deplaned Revenue	522,207	485,794	7.50	1,944,527	1,827,891	6.38
International Enplaned Revenue	11,635	9,297	25.15	42,101	33,179	26.89
International Deplaned Revenue	11,118	9,429	17.91	42,462	35,183	20.69
Domestic Enplaned Non-Revenue	13,578	10,190	33.25	49,009	41,914	16.93
Domestic Deplaned Non-Revenue	13,027	13,226	-1.51	47,152	43,690	7.92
International Enplaned Non-Revenue	84	105	-20.00	323	392	-17.60
International Deplaned Non-Revenue	98	87	12.64	295	378	-21.96
Intl Enplaned Pre-Cleared Revenue	1,862	1,689	10.24	6,270	5,908	6.13
Intl Deplaned Pre-Cleared Revenue	1,885	1,784	5.66	6,740	6,545	2.98
Intl Enplaned Pre-Cleared Non-Revenue	25	35	-28.57	92	95	-3.16
Intl Deplaned Pre-Cleared Non-Revenue	36	41	-12.20	110	115	-4.35
Barbara Jordan Terminal Passenger Totals	1,110,620	1,028,337	8.00	4,073,819	3,807,256	7.00
<i>BJT Enplaned Passenger Totals</i>	<i>562,249</i>	<i>517,976</i>	<i>8.55</i>	<i>2,032,533</i>	<i>1,893,454</i>	<i>7.35</i>
<i>BJT Deplaned Passenger Totals</i>	<i>548,371</i>	<i>510,361</i>	<i>7.45</i>	<i>2,041,286</i>	<i>1,913,802</i>	<i>6.66</i>
<i>BJT Domestic Passenger Totals</i>	<i>1,083,877</i>	<i>1,005,870</i>	<i>7.76</i>	<i>3,975,426</i>	<i>3,725,461</i>	<i>6.71</i>
<i>BJT International Passenger Totals</i>	<i>26,743</i>	<i>22,467</i>	<i>19.03</i>	<i>98,393</i>	<i>81,795</i>	<i>20.29</i>
<u>South Terminal (ST)</u>						
Passenger Activity						
South Terminal Domestic Enplaned Revenue	7,079	0	0	7,079	0	0
South Terminal Domestic Deplaned Revenue	6,926	0	0	6,926	0	0
South Terminal Domestic Enplaned Non-Revenue	0	0	0	0	0	0
South Terminal Domestic Deplaned Non-Revenue	0	0	0	0	0	0
South Terminal Passenger Totals	14,005	0	0.00	14,005	0	0.00

Austin-Bergstrom International Airport Aviation Activity Report Calendar Year 2017 vs 2016

	4/2017	4/2016	Percent Change	01/2017 - 04/2017	01/2016 - 04/2016	Percent Change
<u>Total Cargo Activity</u>						
Mail						
Domestic Enplaned Mail	197,949	117,056	69.11	761,575	422,360	80.31
Domestic Deplaned Mail	386,634	93,201	314.84	1,296,396	751,320	72.55
International Enplaned Mail	0	0	0	0	0	0
International Deplaned Mail	0	0	0	0	0	0
South Terminal-Intl Enplaned Mail	0	0	0	0	0	0
South Terminal-Intl Deplaned Mail	0	0	0	0	0	0
Mail Totals	584,583	210,257	178.03	2,057,971	1,173,680	75.34
Cargo						
Domestic Enplaned Cargo	4,821,616	5,174,195	-6.81	19,095,493	20,320,346	-6.03
Domestic Deplaned Cargo	7,134,693	6,488,452	9.96	27,012,335	24,014,269	12.48
International Enplaned Cargo	1,217,525	1,049,390	16.02	3,170,231	1,815,159	74.65
International Deplaned Cargo	1,097,567	1,019,913	7.61	1,900,649	1,430,197	32.89
South Terminal-Intl Enplaned Cargo	0	0	0	0	0	0
South Terminal-Intl Deplaned Cargo	0	0	0	0	0	0
Cargo Totals	14,271,401	13,731,950	3.93	51,178,708	47,579,971	7.56
Belly Freight						
Domestic Enplaned Belly Freight	328,731	231,054	42.27	986,367	947,283	4.13
Domestic Deplaned Belly Freight	611,195	594,296	2.84	1,944,262	1,921,705	1.17
International Enplaned Belly Freight	194,817	80,417	142.26	889,610	729,664	21.92
International Deplaned Belly Freight	572,009	589,899	-3.03	2,826,942	2,052,562	37.73
South Terminal-Intl Enplaned Belly Freight	0	0	0	0	0	0
South Terminal-Intl Deplaned Belly Freight	0	0	0	0	0	0
Belly Freight Totals	1,706,752	1,495,666	14.11	6,647,181	5,651,214	17.62
Cargo Totals (Mail, Cargo, Belly Freight)	16,562,736	15,437,873	7.29	59,883,860	54,404,865	10.07
<i>Enplaned Cargo Totals</i>	<i>6,760,638</i>	<i>6,652,112</i>	<i>1.63</i>	<i>24,903,276</i>	<i>24,234,812</i>	<i>2.76</i>
<i>Deplaned Cargo Totals</i>	<i>9,802,098</i>	<i>8,785,761</i>	<i>11.57</i>	<i>34,980,584</i>	<i>30,170,053</i>	<i>15.94</i>
<i>Domestic Cargo Totals</i>	<i>13,480,818</i>	<i>12,698,254</i>	<i>6.16</i>	<i>51,096,428</i>	<i>48,377,283</i>	<i>5.62</i>
<i>International Cargo Totals</i>	<i>3,081,918</i>	<i>2,739,619</i>	<i>12.49</i>	<i>8,787,432</i>	<i>6,027,582</i>	<i>45.79</i>

CURRENT CARGO RECORD = 40,215,518

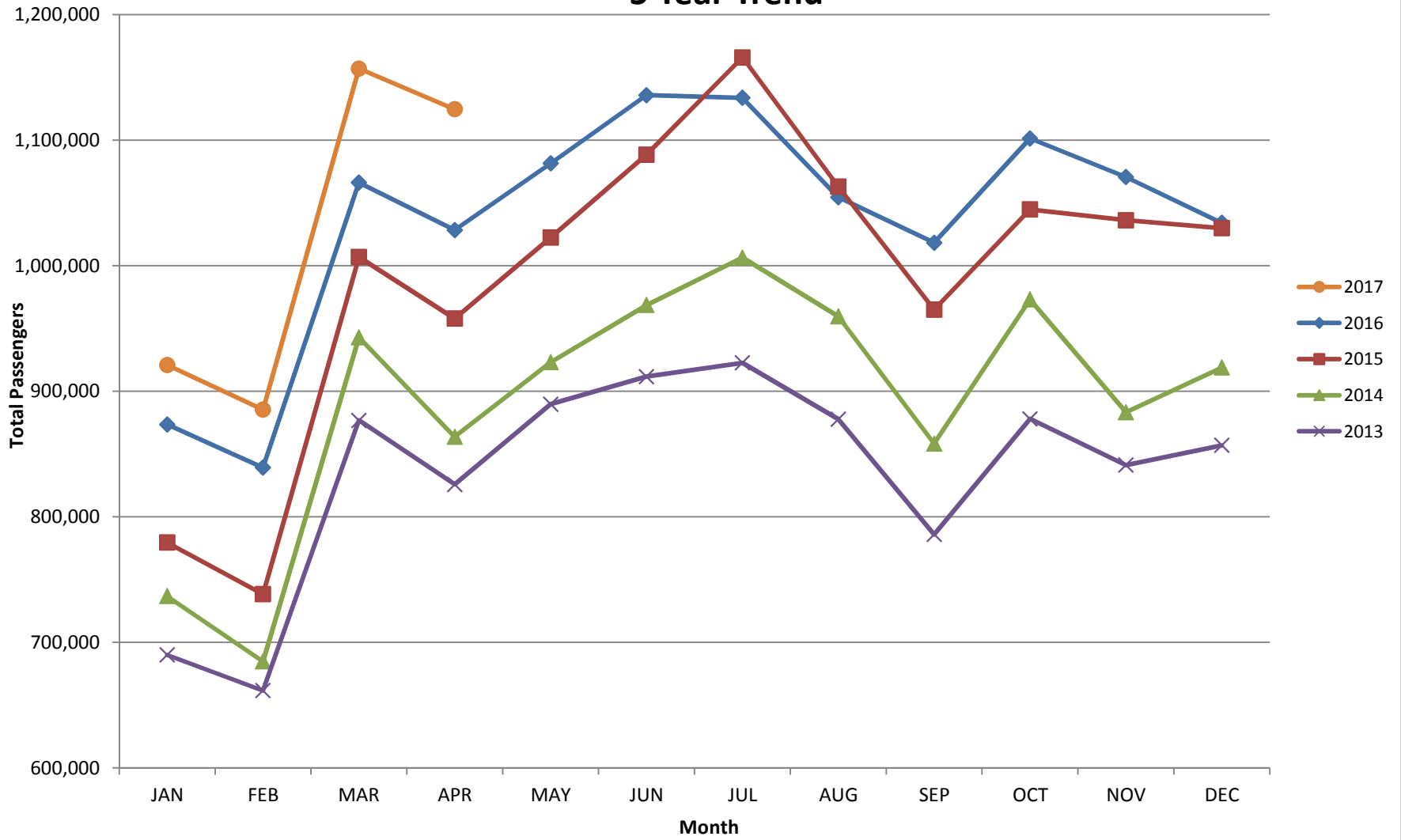
RECORD SET = MARCH 2001

AUS – Airline Codes
April 2017

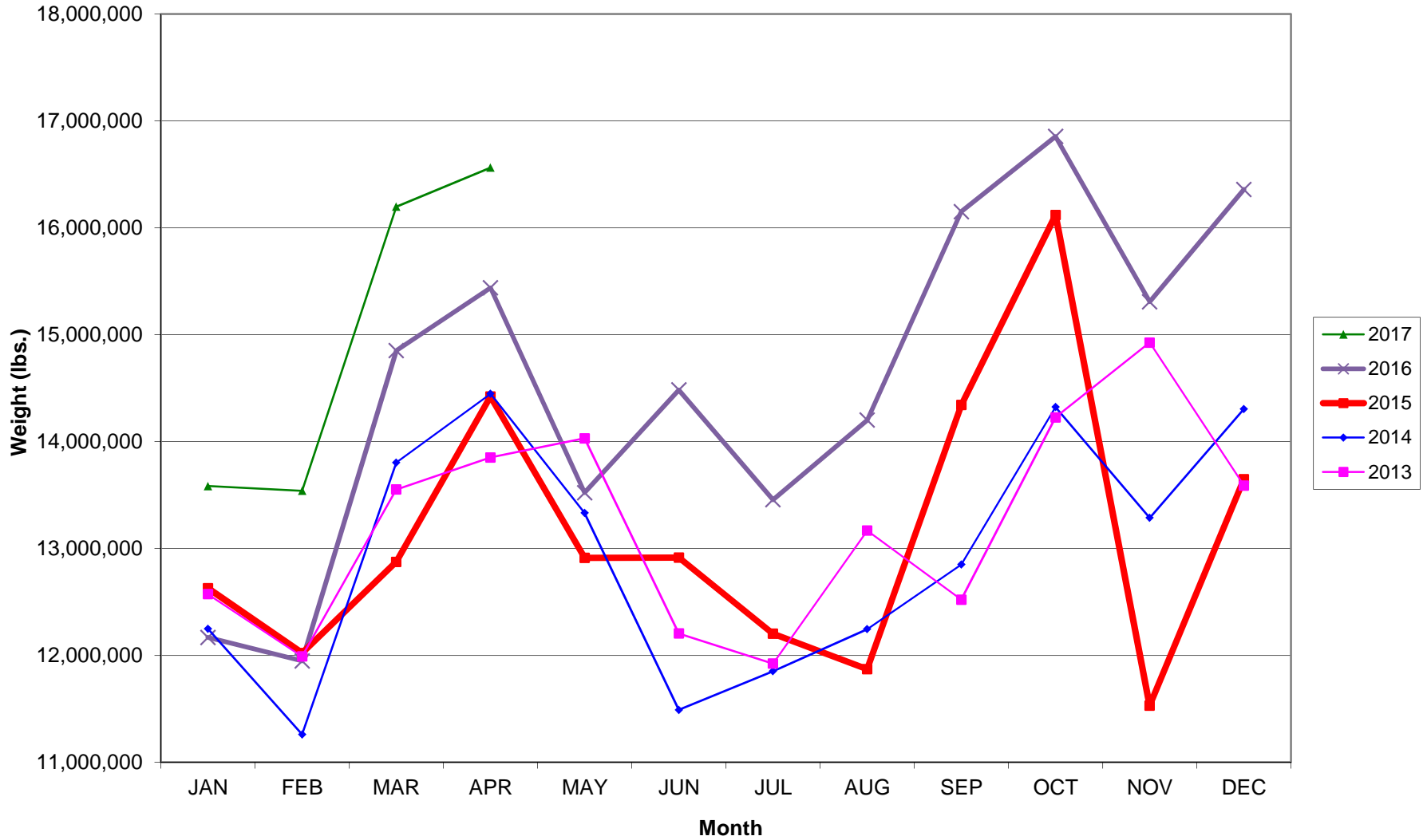
<u>Code</u>	<u>Carrier</u>
AM	AeroMexico Airlines
AC	Air Canada
AS	Alaska Airlines, Inc.
G4	Allegiant Air, LLC
AA	American Airlines, Inc.
BA	British Airways Plc
DL	Delta Airlines
F9	Frontier Airlines
IB	Iberia Airlines
B6	JetBlue Airways Corp.
P1	Public Charters, Inc. dba Texas Sky
WN	Southwest Airlines
SY	Sun Country Airlines/ MN Airlines, LLC
WQ	Swift Air, LLC
UA	United Airlines, Inc.
VX	Virgin America Inc.
Y4	Volaris/Concesionaria Vuela Compañía de Aviación, S.A.P.I. de C.V.

AUSTIN PASSENGER TRAFFIC

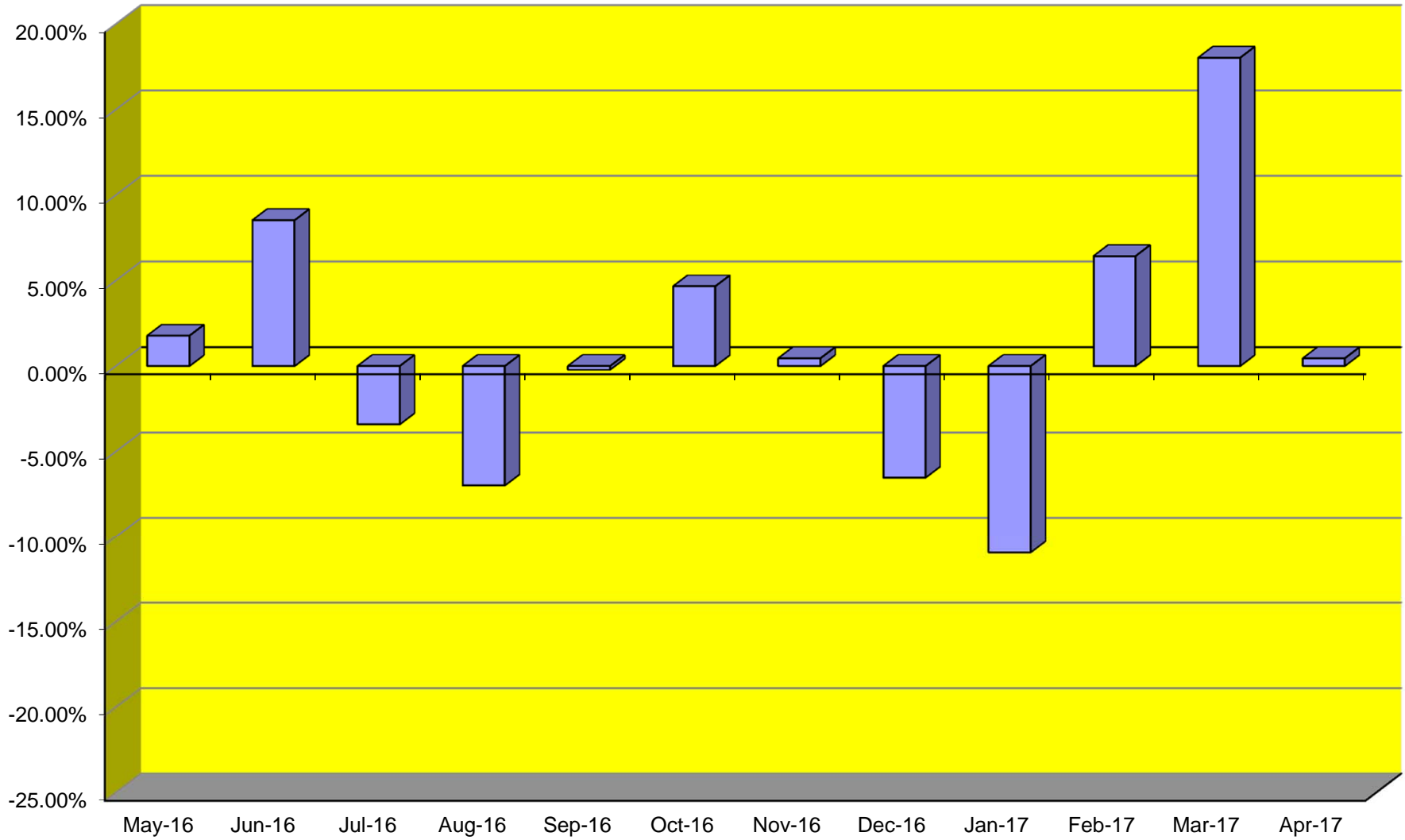
5 Year Trend



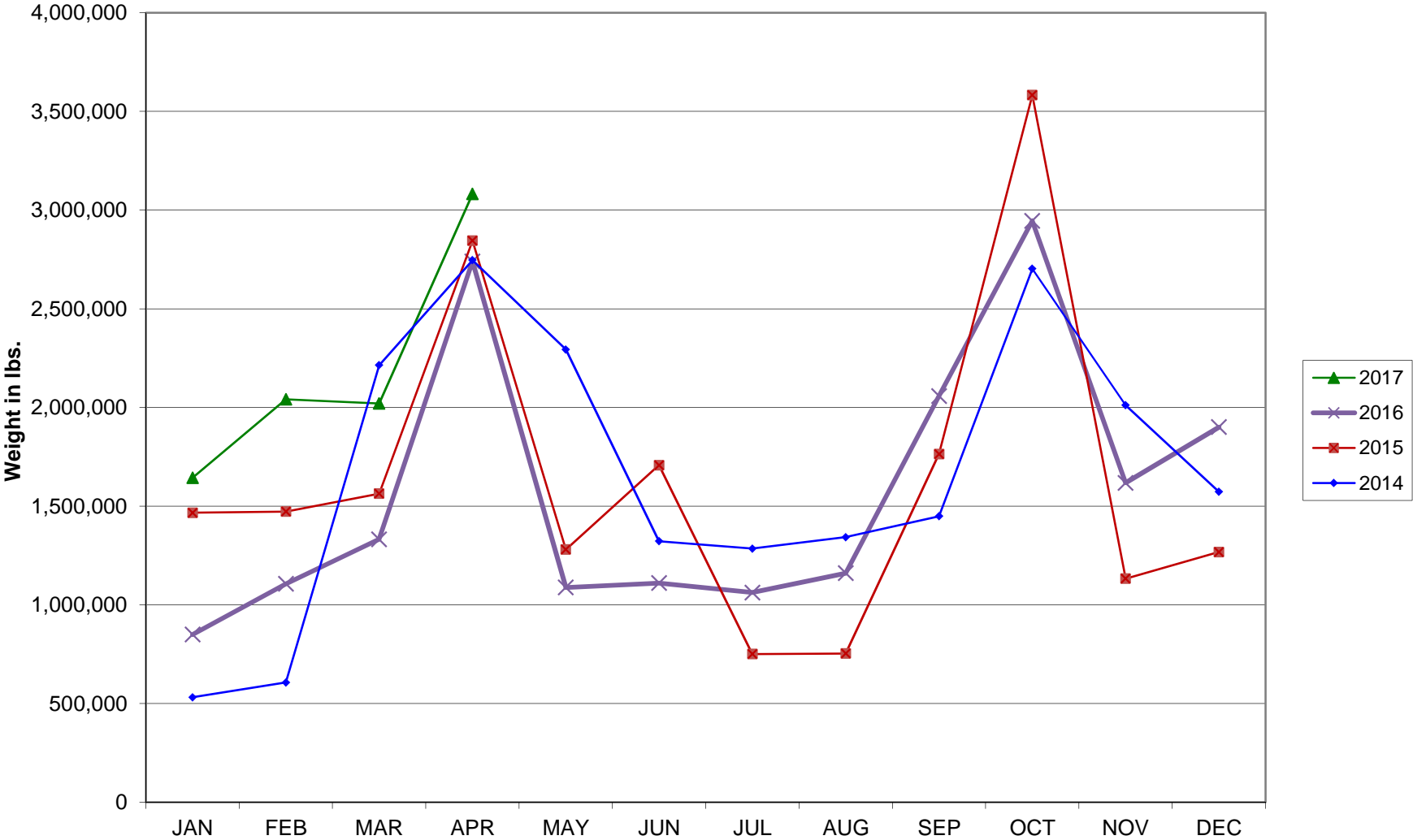
TOTAL CARGO POUNDAGE - AUSTIN, TEXAS



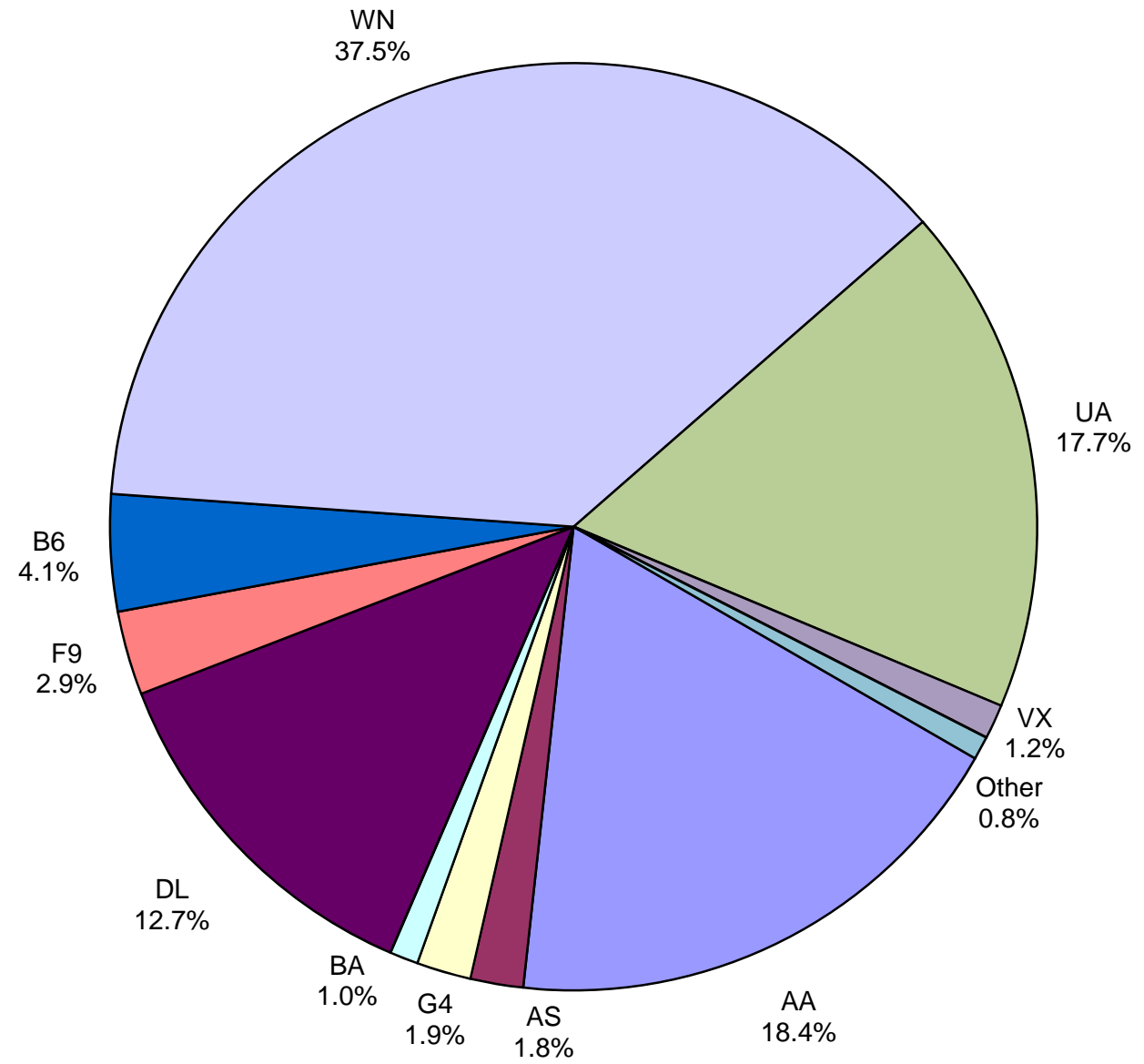
Monthly % Change in Average Daily Passengers



HISTORY OF INTERNATIONAL AIR CARGO



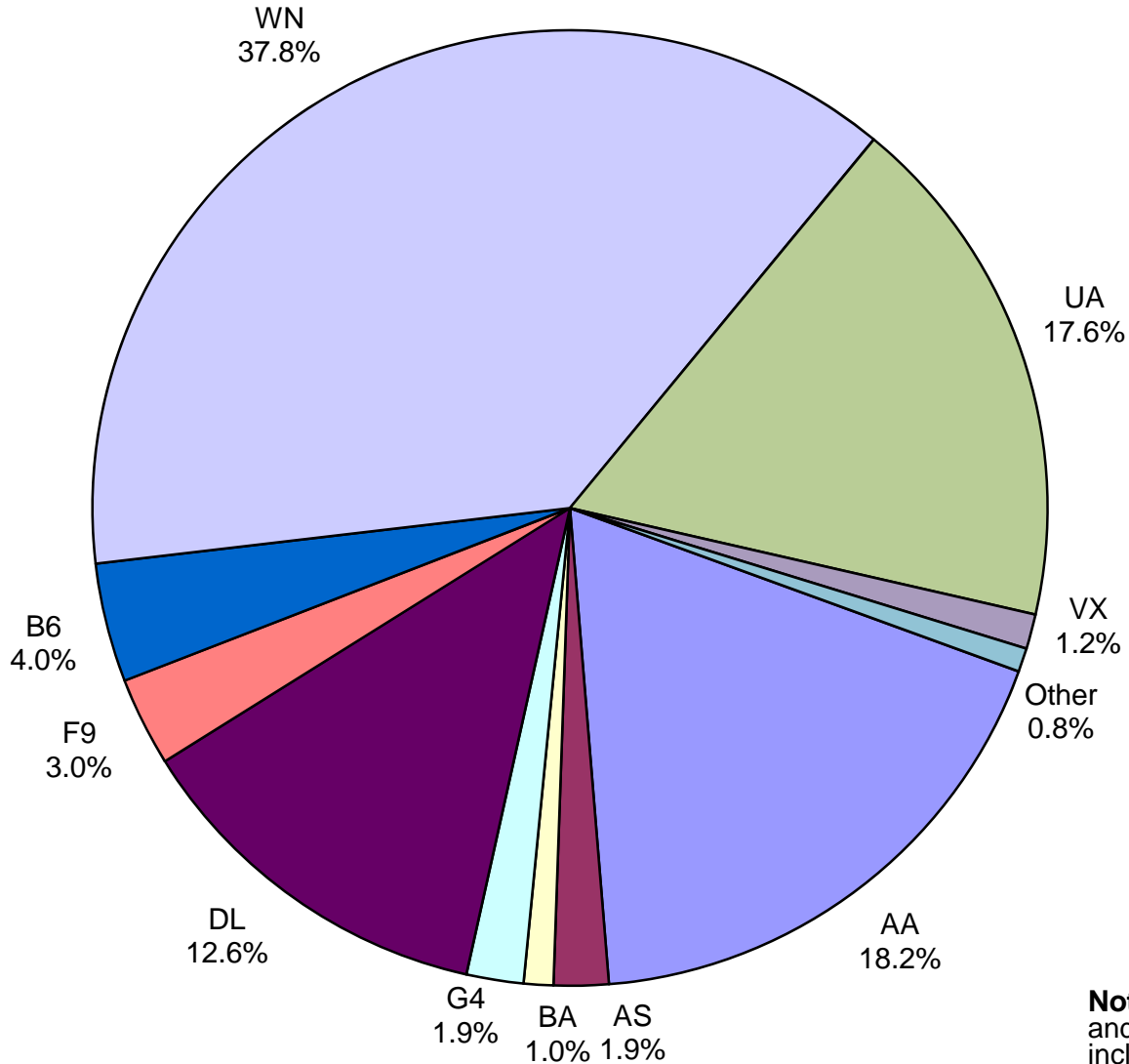
**Total Passengers
April 2017**



Other: Aeromexico, Air Canada, Iberia Airlines, Swift Air, LLC, Sun Country, Texas Sky and Volaris

Note: American, Delta and United Airlines percentages include Affiliates.

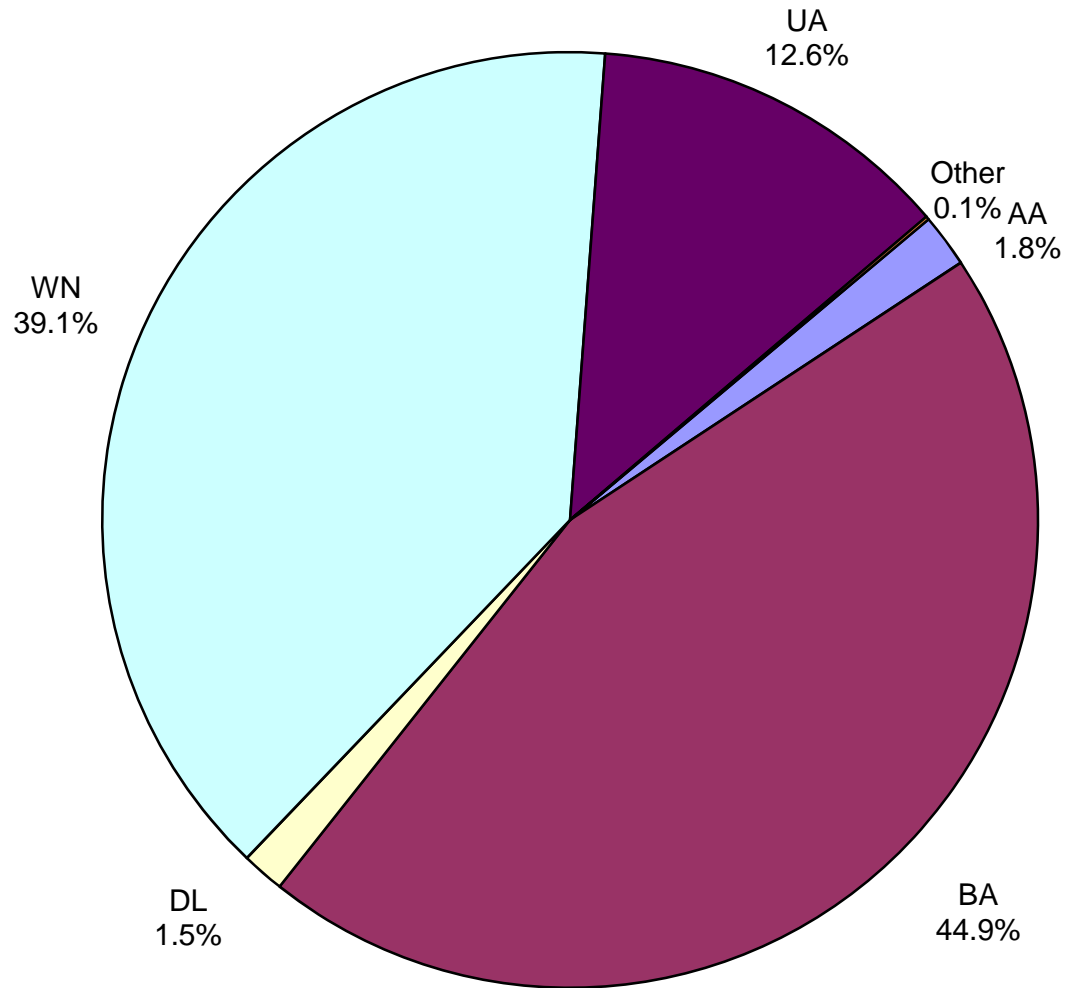
**All Passenger Carriers
Enplaned Revenue Passengers
April 2017**



Other: Aeromexico, Air Canada, Iberia Airlines, Sun Country, Texas Sky and Volaris

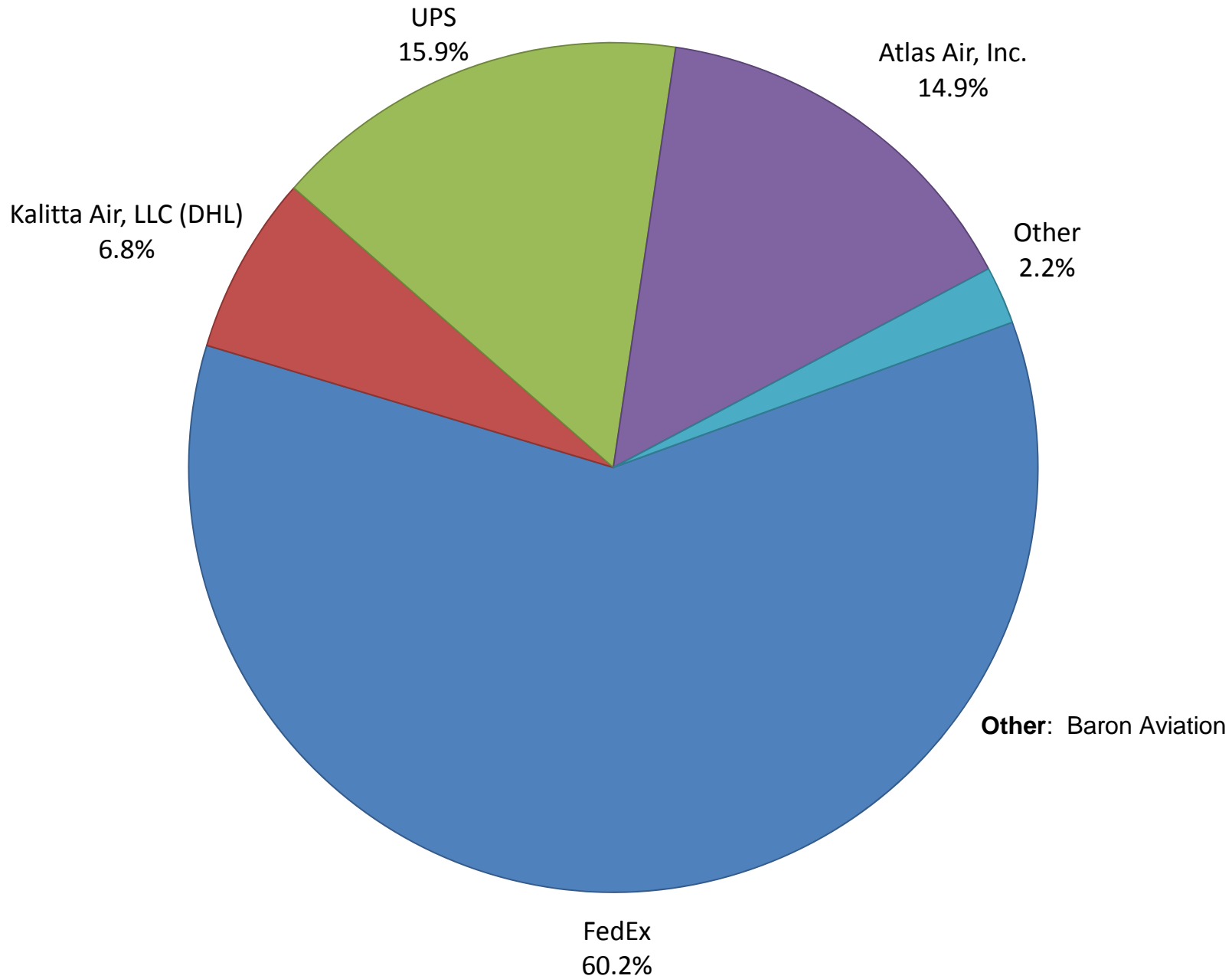
Note: American/US Airways, Delta and United Airlines percentages include Affiliates.

AUS Belly Freight Market Shares
April 2017

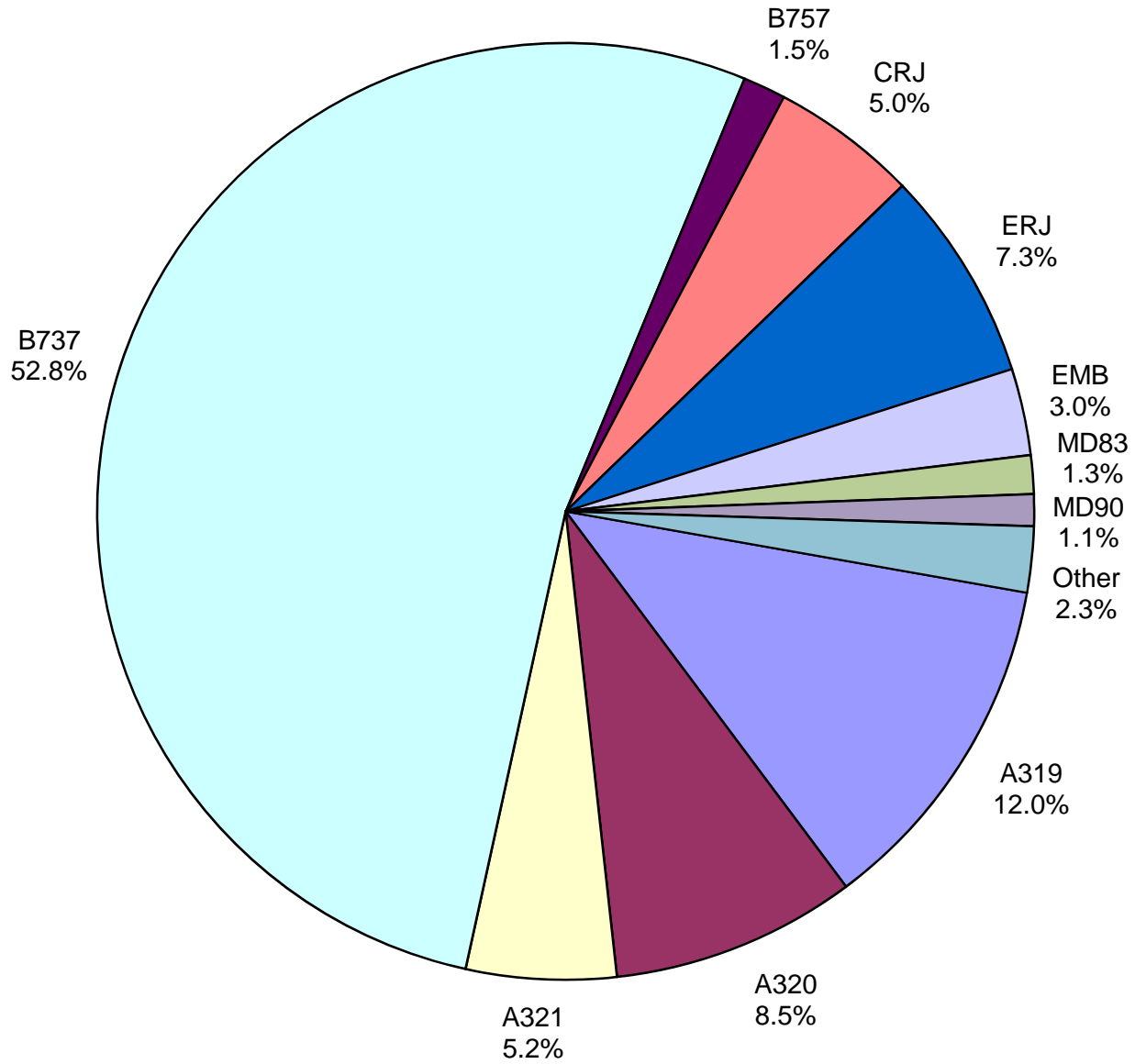


Other = Alaska Airlines

Air Cargo Market Share April 2017

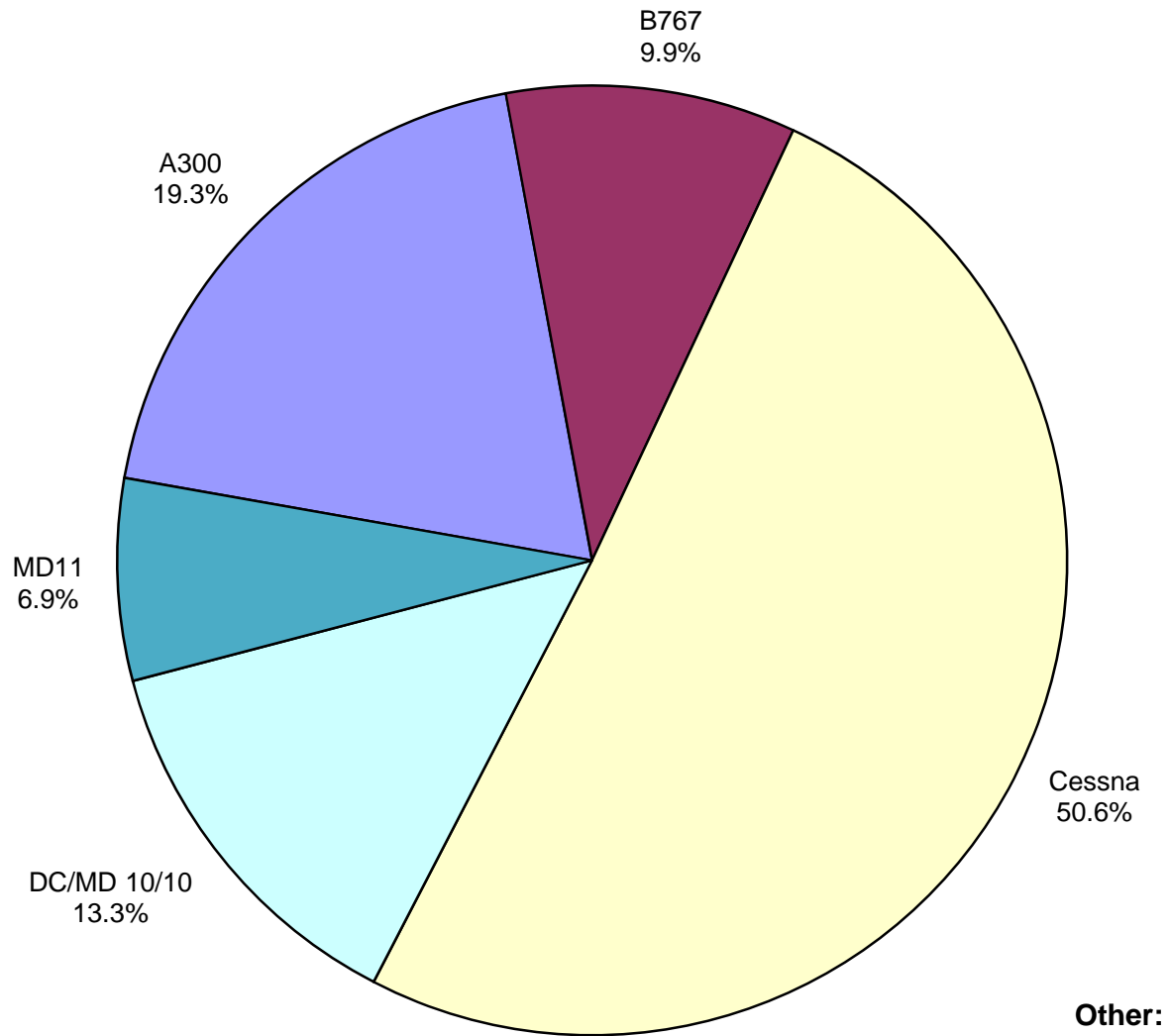


**AUS Scheduled Passenger Aircraft Fleet Mix
April 2017**



Other: B-717, B-747,
B-787, BAE-3100,
BAE-3200, MD-82,
MD-88

**AUS Scheduled Cargo Aircraft Fleet Mix
April 2017**



Austin-Bergstrom International Airport

PAX Detail Report - April, 2017

Period Company	04/2017	04/2016	YTD		YTD 2017	YTD 2016	2017		2016 Share	Share Share	Diff
			Difference	Change			Difference	Change			
AeroMexico Airlines/Aerovias de Mexico, S.A. de C.V.	3,189	0	3,189	0.0	11,921	0	11,921	0.0	0.3	0.0	0.3
Air Canada	3,808	3,549	259	7.3	13,212	12,663	549	4.3	0.3	0.3	0.0
Alaska Airlines, Inc.	20,683	20,790	-107	-0.5	76,337	64,717	11,620	18.0	1.9	1.7	0.2
Allegiant Air, LLC	21,349	12,970	8,379	64.6	72,921	46,969	25,952	55.3	1.8	1.2	0.6
American Airlines, Inc.	206,981	205,322	1,659	0.8	801,871	771,938	29,933	3.9	19.6	20.3	-0.7
Ameristarjet Charter Inc.	0	14	-14	-100.0	0	14	-14	-100.0	0.0	0.0	0.0
Atlas Air, Inc	0	453	-453	-100.0	0	453	-453	-100.0	0.0	0.0	0.0
British Airways Plc	11,130	11,092	38	0.3	40,702	39,503	1,199	3.0	1.0	1.0	0.0
Delta Air Lines	142,459	134,151	8,308	6.2	504,485	469,342	35,143	7.5	12.3	12.3	0.0
Frontier Airlines, Inc.	32,955	23,350	9,605	41.1	102,966	72,845	30,121	41.3	2.5	1.9	0.6
Iberia Airlines	245	246	-1	-0.4	245	246	-1	-0.4	0.0	0.0	0.0
JetBlue Airways Corporation	45,720	41,378	4,342	10.5	191,831	174,250	17,581	10.1	4.7	4.6	0.1
Public Charters, Inc., d/b/a Texas Sky	137	131	6	4.6	604	487	117	24.0	0.0	0.0	0.0
Southwest Airlines	421,208	395,713	25,495	6.4	1,546,119	1,489,792	56,327	3.8	37.8	39.1	-1.3
Sun Country Airlines/ MN Airlines, LLC	364	497	-133	-26.8	2,034	1,969	65	3.3	0.0	0.1	0.0
Swift Air, LLC	290	0	290	0.0	426	0	426	0.0	0.0	0.0	0.0
United Airlines, Inc.	199,354	164,181	35,173	21.4	663,442	607,091	56,351	9.3	16.2	15.9	0.3
Virgin America Inc.	13,590	14,500	-910	-6.3	52,552	54,400	-1,848	-3.4	1.3	1.4	-0.1
Volaris	1,163	0	1,163	0.0	6,020	0	6,020	0.0	0.1	0.0	0.1
Xtra Airways/Casino Express	0	0	0	0.0	136	577	-441	-76.4	0.0	0.0	0.0
Report Totals	1,124,625	1,028,337	96,288	9.4%	4,087,824	3,807,256	280,568	7.4%			

Statistics Included in Report:

Domestic Passengers: Enplaned Revenue, Deplaned Revenue, Enplaned Non-Revenue, Deplaned Non-Revenue
 International Passengers: Enplaned Revenue, Deplaned Revenue, Enplaned Non-Revenue, Deplaned Non-Revenue
 International Pre-Cleared Passengers: Enplaned Revenue, Deplaned Revenue, Enplaned Non-Revenue, Deplaned Non-Revenue

Austin-Bergstrom International Airport

Summary Landing Report

Landing Type: Total

Month	2017		2016		2015		% Change 2017 - 2016		% Change 2016 - 2015	
	Count	Weight	Count	Weight	Count	Weight	Count	Weight	Count	Weight
January	4,768	612,688,871	4,622	560,718,408	4,480	530,688,382	3.16%	9.27%	3.17%	5.66%
February	4,357	552,711,639	4,387	527,452,920	3,992	477,489,019	-0.68%	4.79%	9.89%	10.46%
March	5,307	685,661,659	5,151	639,655,137	4,872	584,604,521	3.03%	7.19%	5.73%	9.42%
April	5,179	689,402,051	4,892	614,643,711	4,875	593,462,176	5.87%	12.16%	0.35%	3.57%
May			5,096	630,853,941	5,161	625,876,151			-1.26%	0.80%
June			5,179	651,537,449	5,239	644,690,908			-1.15%	1.06%
July			5,233	663,015,597	5,503	676,131,170			-4.91%	-1.94%
August			5,181	660,099,361	5,277	652,770,571			-1.82%	1.12%
September			4,738	623,397,035	4,833	598,547,454			-1.97%	4.15%
October			4,923	649,182,343	4,891	611,952,269			0.65%	6.08%
November			4,775	624,303,554	4,815	605,234,834			-0.83%	3.15%
December			4,893	629,611,090	5,100	633,215,540			-4.06%	-0.57%
Totals for Selected Period	19,611	2,540,464,220	19,052	2,342,470,176	18,219	2,186,244,098	2.93%	8.45%	4.57%	7.15%
Yearly Totals	19,611	2,540,464,220	59,070	7,474,470,546	59,038	7,234,662,995			0.05%	3.31%