

Austin-Bergstrom International Airport

Aviation Activity Report

Calendar Year 2017 vs 2016

	01/2017	01/2016	Percent Change	01/2017 - 01/2017	01/2016 - 01/2016	Percent Change
Passenger Activity						
Domestic Enplaned Revenue	430,615	411,226	4.71	430,615	411,226	4.71
Domestic Deplaned Revenue	442,731	422,103	4.89	442,731	422,103	4.89
International Enplaned Revenue	9,922	8,191	21.13	9,922	8,191	21.13
International Deplaned Revenue	11,068	9,132	21.20	11,068	9,132	21.20
Domestic Enplaned Non-Revenue	11,946	10,167	17.50	11,946	10,167	17.50
Domestic Deplaned Non-Revenue	11,156	9,719	14.79	11,156	9,719	14.79
International Enplaned Non-Revenue	60	76	-21.05	60	76	-21.05
International Deplaned Non-Revenue	54	70	-22.86	54	70	-22.86
Intl Enplaned Pre-Cleared Revenue	1,640	1,302	25.96	1,640	1,302	25.96
Intl Deplaned Pre-Cleared Revenue	1,711	1,544	10.82	1,711	1,544	10.82
Intl Enplaned Pre-Cleared Non-Revenue	25	16	56.25	25	16	56.25
Intl Deplaned Pre-Cleared Non-Revenue	18	14	28.57	18	14	28.57
Passenger Totals	920,946	873,560	5.42	920,946	873,560	5.42
<i>Enplaned Passenger Totals</i>	<i>454,208</i>	<i>430,978</i>	<i>5.39</i>	<i>454,208</i>	<i>430,978</i>	<i>5.39</i>
<i>Deplaned Passenger Totals</i>	<i>466,738</i>	<i>442,582</i>	<i>5.46</i>	<i>466,738</i>	<i>442,582</i>	<i>5.46</i>
<i>Domestic Passenger Totals</i>	<i>896,448</i>	<i>853,215</i>	<i>5.07</i>	<i>896,448</i>	<i>853,215</i>	<i>5.07</i>
<i>International Passenger Totals</i>	<i>24,498</i>	<i>20,345</i>	<i>20.41</i>	<i>24,498</i>	<i>20,345</i>	<i>20.41</i>

CURRENT PASSENGER RECORD = 1,165,811 RECORD SET = JULY 2015

Aircraft Operations

Air Carrier	9,322	8,985	3.75	9,322	8,985	3.75
Commuter & Air Taxi	1,095	1,121	-2.32	1,095	1,121	-2.32
Military	904	745	21.34	904	745	21.34
General Aviation						
Itinerant	4,206	3,790	10.98	4,206	3,790	10.98
Local	134	222	-39.64	134	222	-39.64
Total G.A.	4,340	4,012	8.18	4,340	4,012	8.18
Total Operations	15,661	14,863	5.37	15,661	14,863	5.37

Austin-Bergstrom International Airport

Aviation Activity Report

Calendar Year 2017 vs 2016

	01/2017	01/2016	Percent Change	01/2017 - 01/2017	01/2016 - 01/2016	Percent Change
<u>Cargo Activity</u>						
Mail						
Domestic Enplaned Mail	176,944	137,982	28.24	176,944	137,982	28.24
Domestic Deplaned Mail	275,618	245,790	12.14	275,618	245,790	12.14
International Enplaned Mail	0	0	0.00	0	0	0.00
International Deplaned Mail	0	0	0.00	0	0	0.00
Mail Totals	452,562	383,772	17.92	452,562	383,772	17.92
Cargo						
Domestic Enplaned Cargo	4,471,203	4,995,372	-10.49	4,471,203	4,995,372	-10.49
Domestic Deplaned Cargo	6,438,966	5,263,904	22.32	6,438,966	5,263,904	22.32
International Enplaned Cargo	623,417	184,839	237.28	623,417	184,839	237.28
International Deplaned Cargo	318,802	95,900	232.43	318,802	95,900	232.43
Cargo Totals	11,852,388	10,540,015	12.45	11,852,388	10,540,015	12.45
Belly Freight						
Domestic Enplaned Belly Freight	197,923	258,538	-23.45	197,923	258,538	-23.45
Domestic Deplaned Belly Freight	379,146	416,364	-8.94	379,146	416,364	-8.94
International Enplaned Belly Freight	146,456	211,141	-30.64	146,456	211,141	-30.64
International Deplaned Belly Freight	555,073	357,801	55.13	555,073	357,801	55.13
Belly Freight Totals	1,278,598	1,243,844	2.79	1,278,598	1,243,844	2.79
Cargo Totals (Mail, Cargo, Belly Freight)	13,583,548	12,167,631	11.64	13,583,548	12,167,631	11.64
<i>Enplaned Cargo Totals</i>	<i>5,615,943</i>	<i>5,787,872</i>	<i>-2.97</i>	<i>5,615,943</i>	<i>5,787,872</i>	<i>-2.97</i>
<i>Deplaned Cargo Totals</i>	<i>7,967,605</i>	<i>6,379,759</i>	<i>24.89</i>	<i>7,967,605</i>	<i>6,379,759</i>	<i>24.89</i>
<i>Domestic Cargo Totals</i>	<i>11,939,800</i>	<i>11,317,950</i>	<i>5.49</i>	<i>11,939,800</i>	<i>11,317,950</i>	<i>5.49</i>
<i>International Cargo Totals</i>	<i>1,643,748</i>	<i>849,681</i>	<i>93.45</i>	<i>1,643,748</i>	<i>849,681</i>	<i>93.45</i>

CURRENT CARGO RECORD = 40,215,518

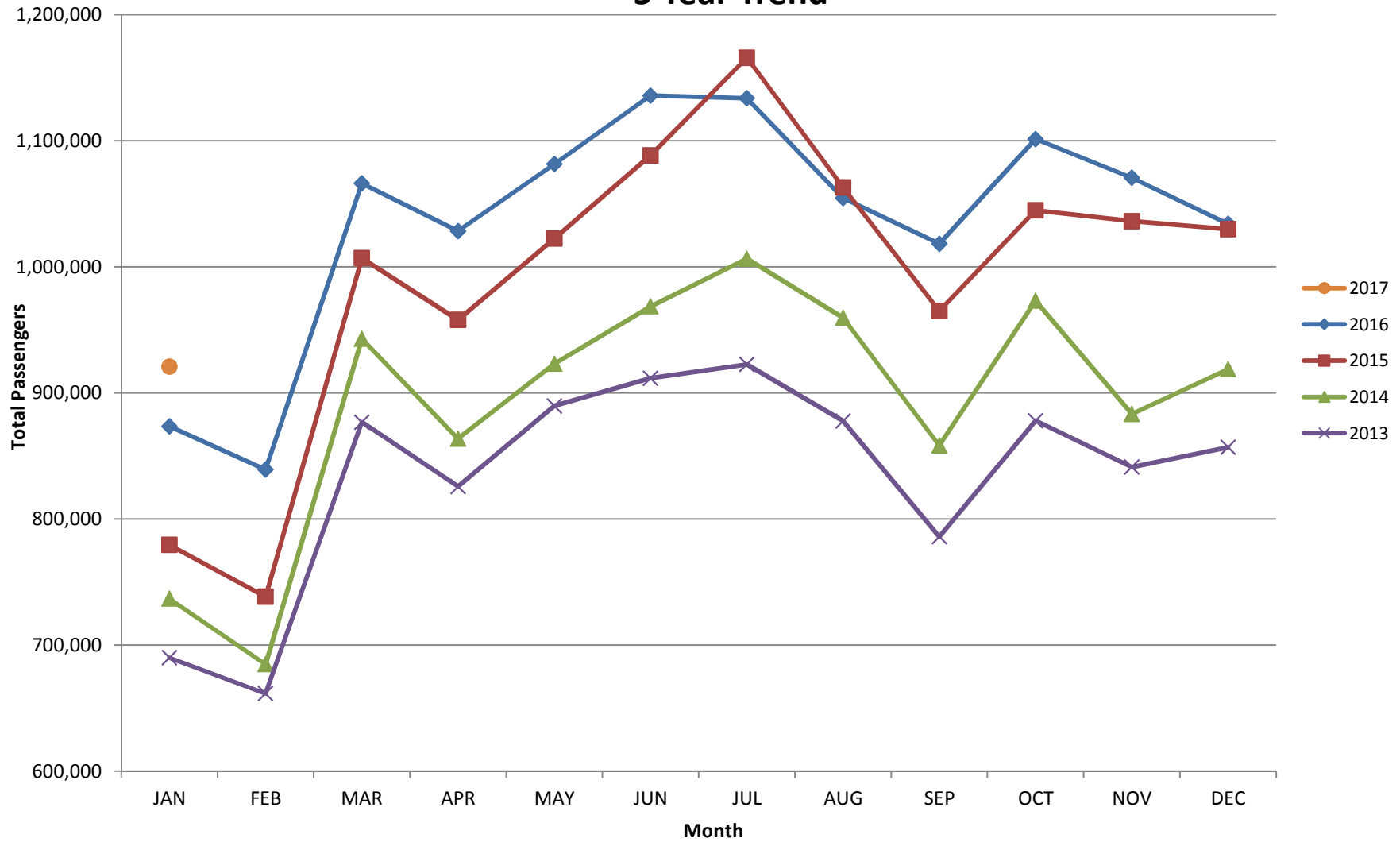
RECORD SET = MARCH 2001

AUS – Airline Codes
January 2017

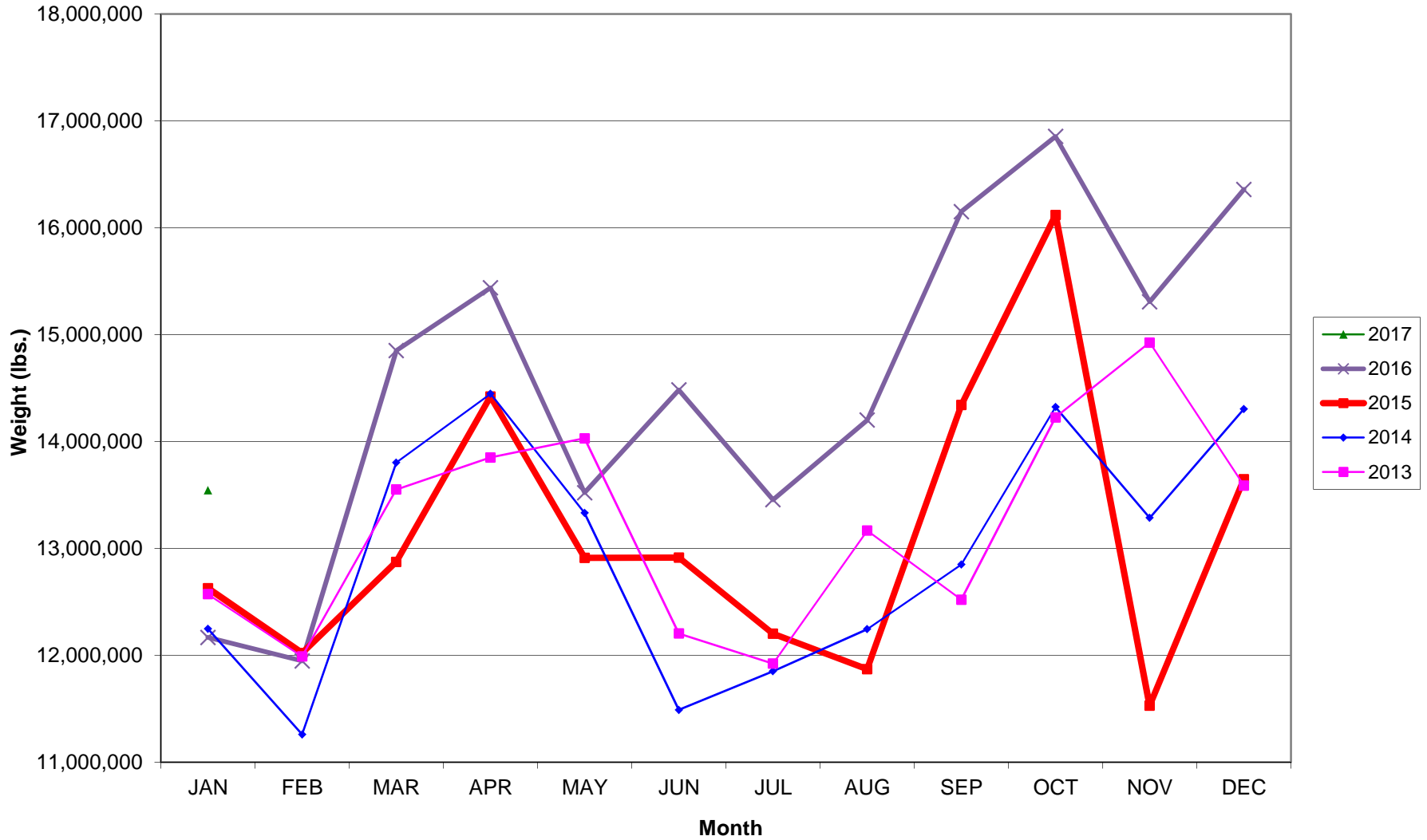
<u>Code</u>	<u>Carrier</u>
AM	AeroMexico Airlines
AC	Air Canada
AS	Alaska Airlines, Inc.
G4	Allegiant Air, LLC
AA	American Airlines, Inc.
BA	British Airways Plc
DL	Delta Airlines
F9	Frontier Airlines
B6	JetBlue Airways Corp.
P1	Public Charters, Inc. dba Texas Sky
WN	Southwest Airlines
SY	Sun Country Airlines/ MN Airlines, LLC
UA	United Airlines, Inc.
VX	Virgin America Inc.
Y4	Volaris/Concesionaria Vuela Compañía de Aviación, S.A.P.I. de C.V.

AUSTIN PASSENGER TRAFFIC

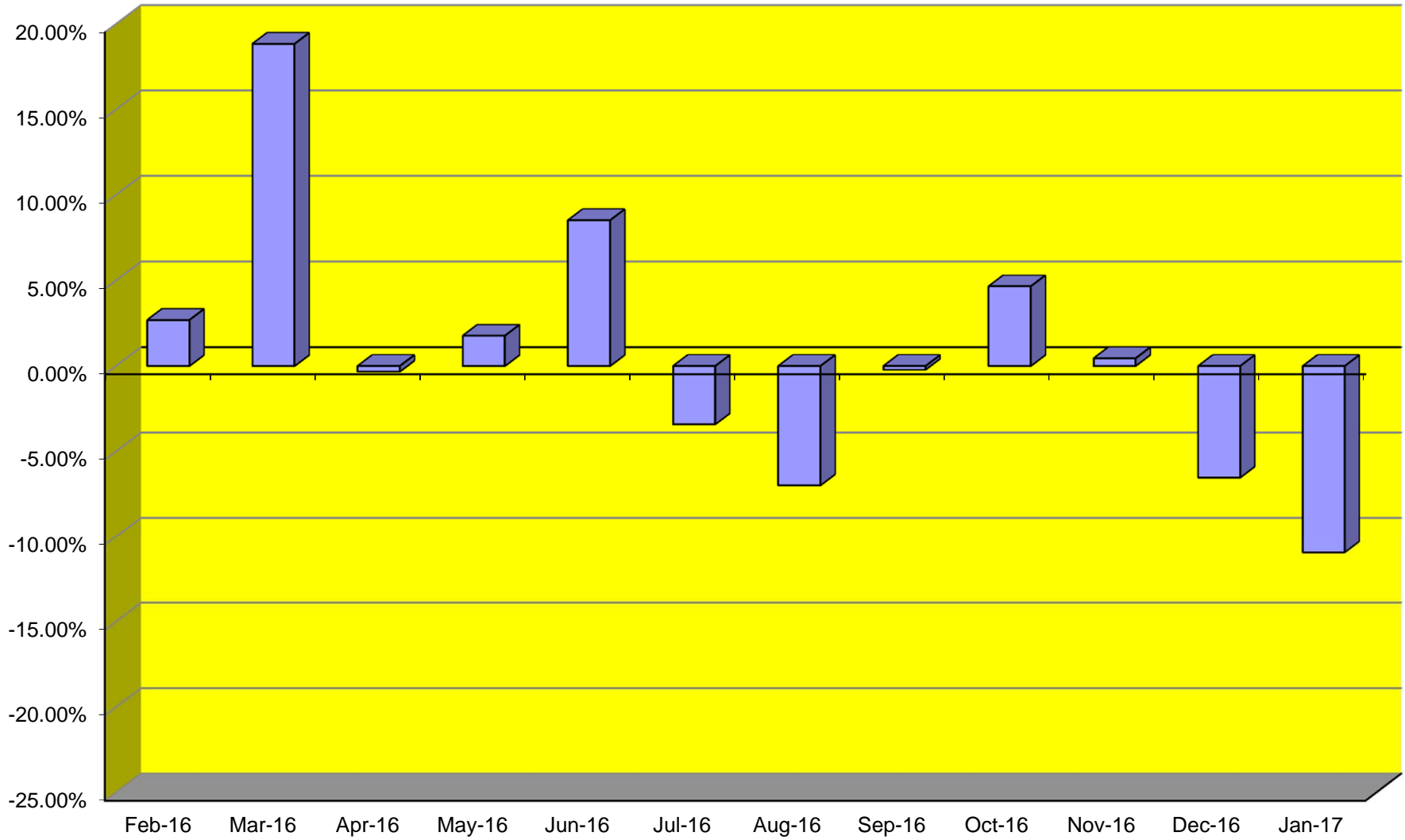
5 Year Trend



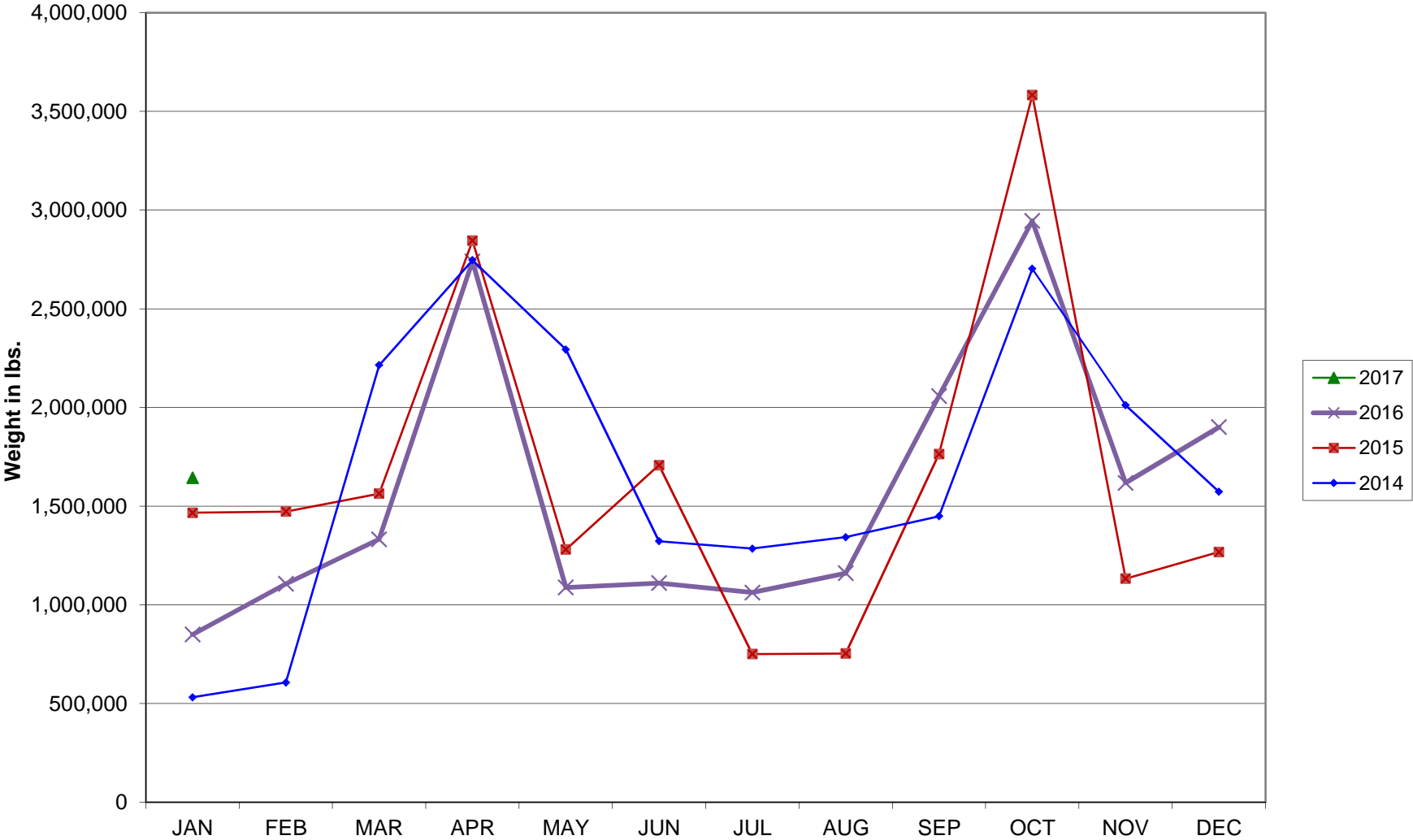
TOTAL CARGO POUNDAGE - AUSTIN, TEXAS



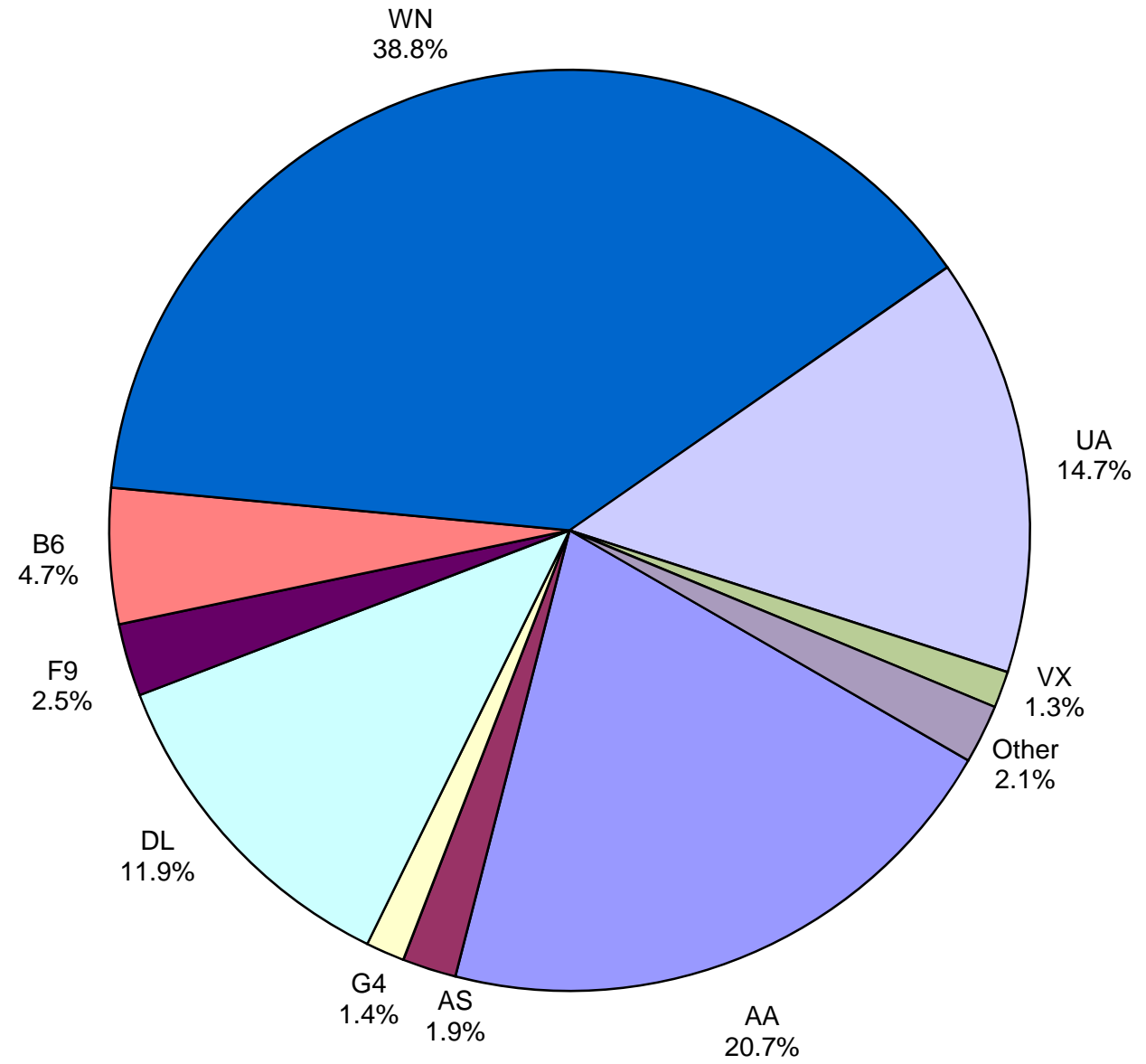
Monthly % Change in Average Daily Passengers



HISTORY OF INTERNATIONAL AIR CARGO



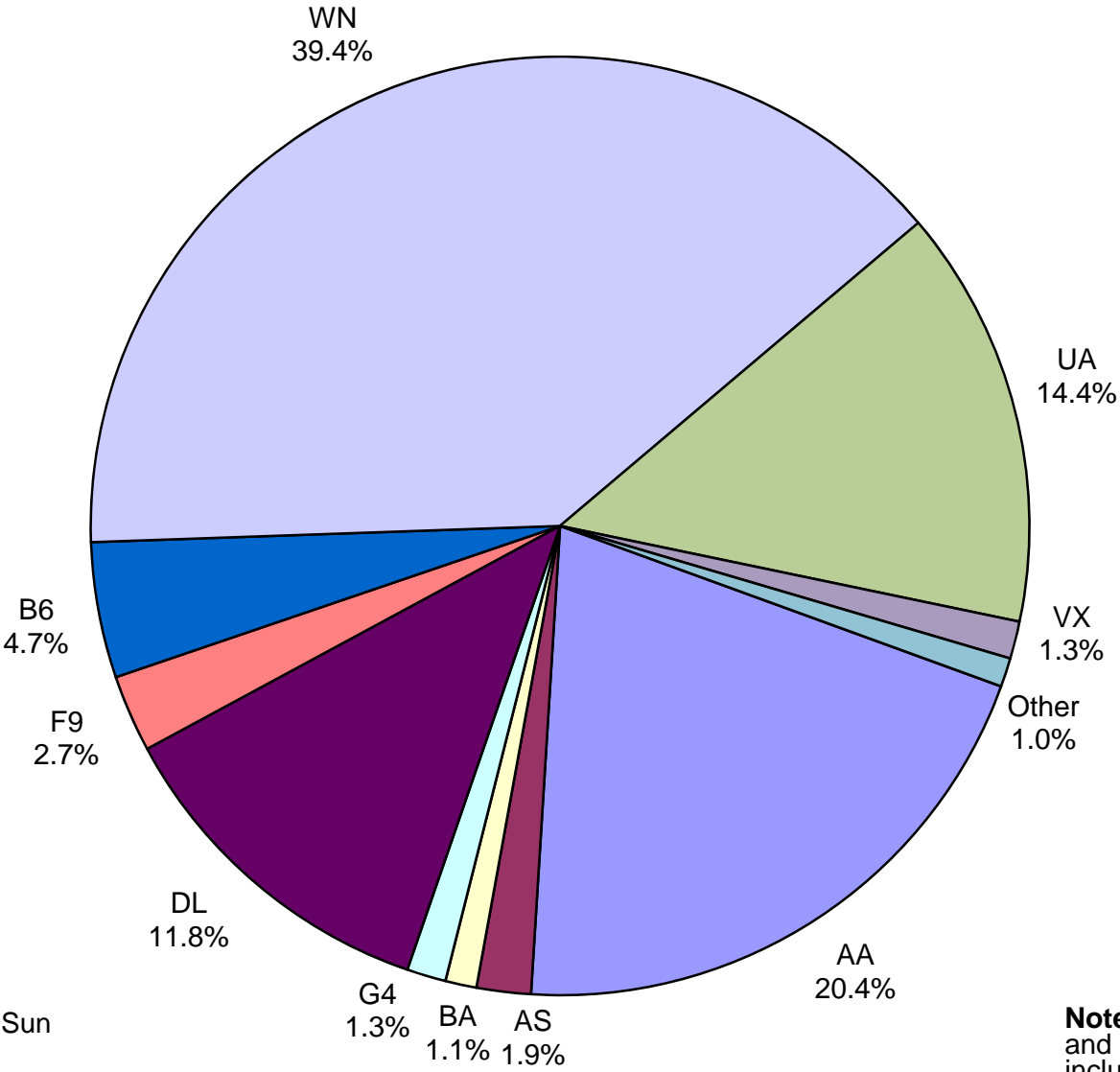
**Total Passengers
January 2017**



Other: Aeromexico, Air Canada, British Airways, Sun Country, Texas Sky and Volaris

Note: American, Delta and United Airlines percentages include Affiliates.

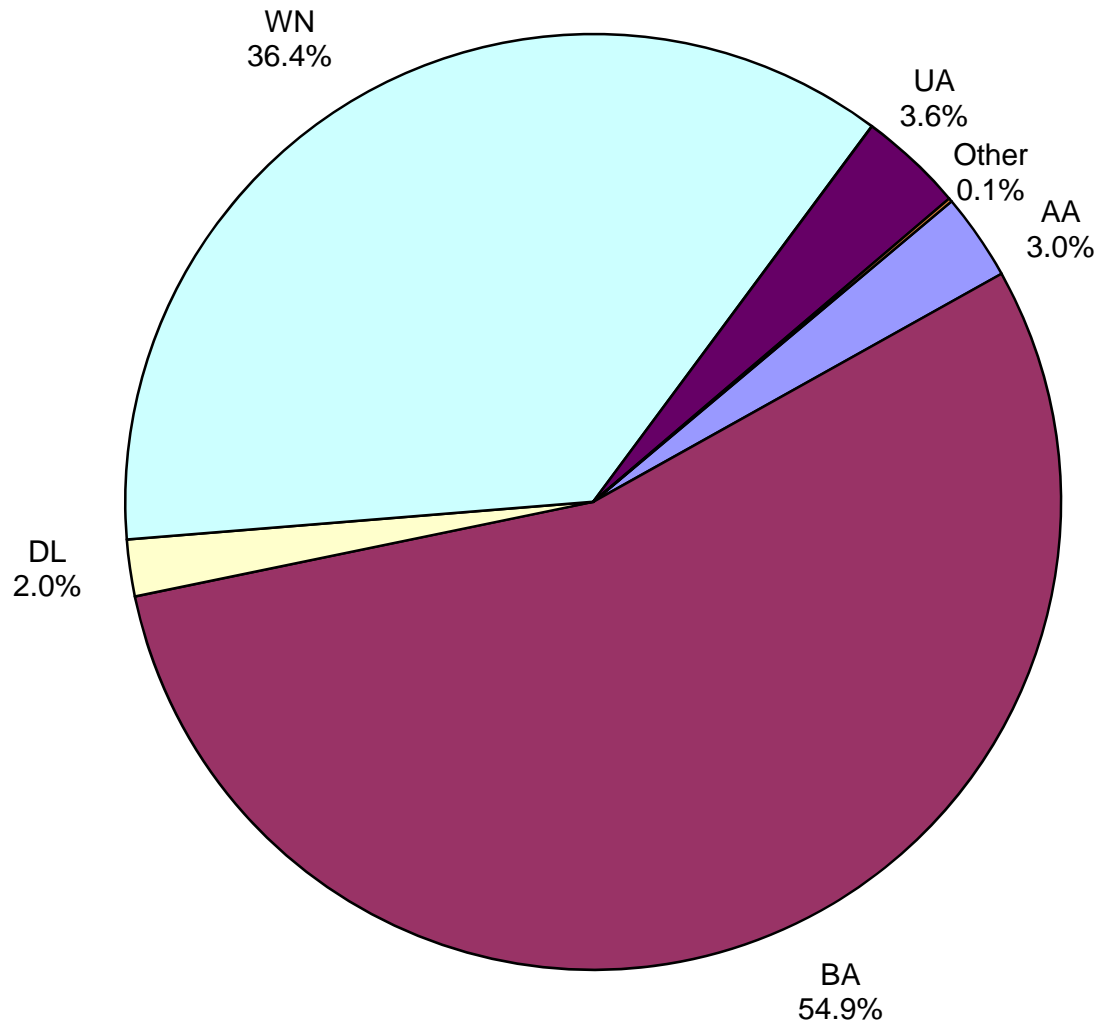
**All Passenger Carriers
Enplaned Revenue Passengers
January 2017**



Other: Aeromexico, Air Canada, Sun Country, Texas Sky and Volaris

Note: American/US Airways, Delta and United Airlines percentages include Affiliates.

**AUS Belly Freight Market Shares
January 2017**



Other = Alaska Airlines

Air Cargo Market Share January 2017

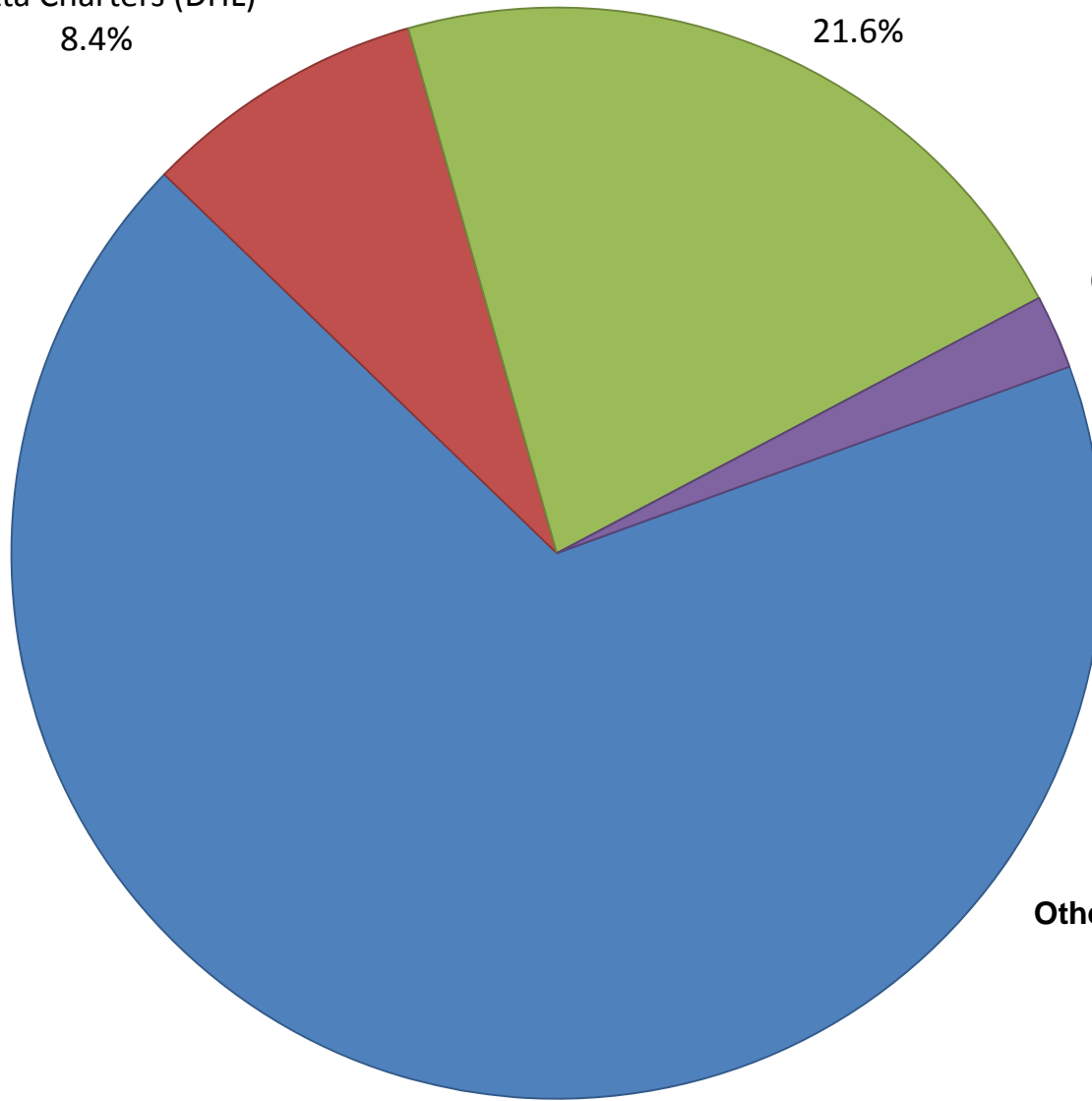
Kalitta Charters (DHL)
8.4%

UPS
21.6%

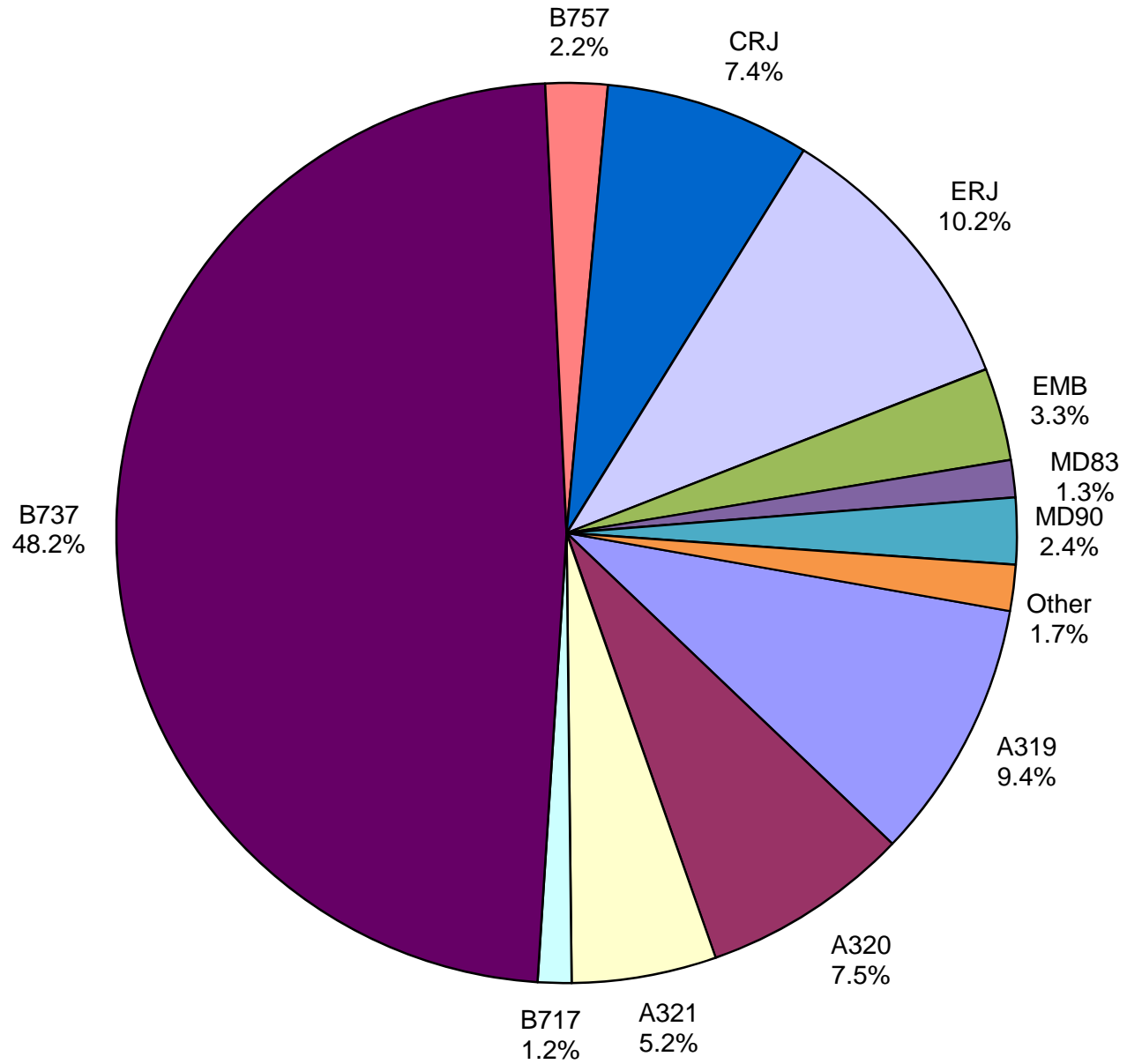
Other
2.2%

Other: Baron Aviation

FedEx
67.8%

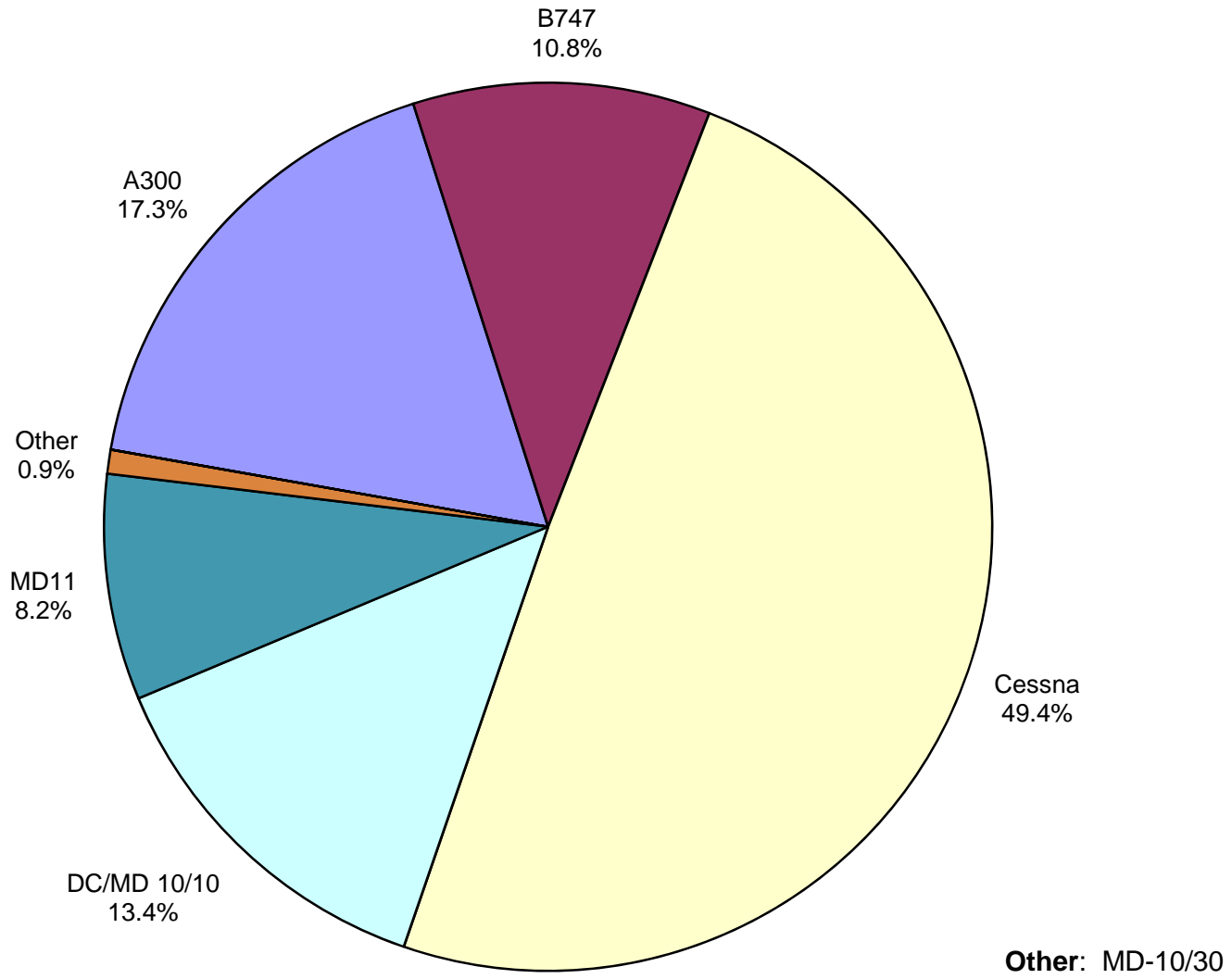


**AUS Scheduled Passenger Aircraft Fleet Mix
January 2017**



Other: B-787,
BAE-3200, BAE-4100,
MD-80and MD-88

**AUS Scheduled Cargo Aircraft Fleet Mix
January 2017**



Austin-Bergstrom International Airport

PAX Detail Report - January, 2017

Period Company	01/2017	01/2016	Difference	Change	YTD 2017	YTD 2016	YTD Difference	YTD Change	2017 Share	2016 Share	Share Diff
AeroMexico Airlines/Aerovias de Mexico, S.A. de C.V.	2,932	0	2,932	0.0	2,932	0	2,932	0.0	0.3	0.0	0.3
Air Canada	3,394	2,876	518	18.0	3,394	2,876	518	18.0	0.4	0.3	0.0
Alaska Airlines, Inc.	17,395	13,312	4,083	30.7	17,395	13,312	4,083	30.7	1.9	1.5	0.4
Allegiant Air, LLC	12,556	8,502	4,054	47.7	12,556	8,502	4,054	47.7	1.4	1.0	0.4
American Airlines, Inc.	190,284	183,518	6,766	3.7	190,284	183,518	6,766	3.7	20.7	21.0	-0.3
British Airways Plc	9,877	9,872	5	0.1	9,877	9,872	5	0.1	1.1	1.1	-0.1
Delta Air Lines	109,863	101,063	8,800	8.7	109,863	101,063	8,800	8.7	11.9	11.6	0.4
Frontier Airlines, Inc.	23,522	17,294	6,228	36.0	23,522	17,294	6,228	36.0	2.6	2.0	0.6
JetBlue Airways Corporation	43,752	38,810	4,942	12.7	43,752	38,810	4,942	12.7	4.8	4.4	0.3
Public Charters, Inc., d/b/a Texas Sky	126	120	6	5.0	126	120	6	5.0	0.0	0.0	0.0
Southwest Airlines	357,671	352,901	4,770	1.4	357,671	352,901	4,770	1.4	38.8	40.4	-1.6
Sun Country Airlines/ MN Airlines, LLC	555	622	-67	-10.8	555	622	-67	-10.8	0.1	0.1	0.0
United Airlines, Inc.	134,998	133,222	1,776	1.3	134,998	133,222	1,776	1.3	14.7	15.3	-0.6
Virgin America Inc.	11,838	11,306	532	4.7	11,838	11,306	532	4.7	1.3	1.3	0.0
Volaris	2,183	0	2,183	0.0	2,183	0	2,183	0.0	0.2	0.0	0.2
Xtra Airways/Casino Express	0	142	-142	-100.0	0	142	-142	-100.0	0.0	0.0	0.0
Report Totals	920,946	873,560	47,386	5.4%	920,946	873,560	47,386	5.4%			

Statistics Included in Report:

Domestic Passengers:	Enplaned Revenue, Deplaned Revenue, Enplaned Non-Revenue, Deplaned Non-Revenue
International Passengers:	Enplaned Revenue, Deplaned Revenue, Enplaned Non-Revenue, Deplaned Non-Revenue
International Pre-Cleared Passengers:	Enplaned Revenue, Deplaned Revenue, Enplaned Non-Revenue, Deplaned Non-Revenue

Austin-Bergstrom International Airport

Summary Landing Report

Landing Type: Total

Month	2017		2016		2015		% Change 2017 - 2016		% Change 2016 - 2015	
	Count	Weight	Count	Weight	Count	Weight	Count	Weight	Count	Weight
January	4,768	612,688,871	4,622	560,718,408	4,480	530,688,382	3.16%	9.27%	3.17%	5.66%
February			4,387	527,452,920	3,992	477,489,019			9.89%	10.46%
March			5,151	639,655,137	4,872	584,604,521			5.73%	9.42%
April			4,892	614,643,711	4,875	593,462,176			0.35%	3.57%
May			5,096	630,853,941	5,161	625,876,151			-1.26%	0.80%
June			5,179	651,537,449	5,239	644,690,908			-1.15%	1.06%
July			5,233	663,015,597	5,503	676,131,170			-4.91%	-1.94%
August			5,181	660,099,361	5,277	652,770,571			-1.82%	1.12%
September			4,738	623,397,035	4,833	598,547,454			-1.97%	4.15%
October			4,923	649,182,343	4,891	611,952,269			0.65%	6.08%
November			4,775	624,303,554	4,815	605,234,834			-0.83%	3.15%
December			4,893	629,611,090	5,100	633,215,540			-4.06%	-0.57%
Totals for Selected Period	4,768	612,688,871	4,622	560,718,408	4,480	530,688,382	3.16%	9.27%	3.17%	5.66%
Yearly Totals	4,768	612,688,871	59,070	7,474,470,546	59,038	7,234,662,995			0.05%	3.31%