

**Austin-Bergstrom International Airport
Aviation Activity Report
Calendar Year 2021 vs 2020**

Combined Terminals

	4/2021	4/2020	Percent Change	1/2021 - 4/2021	1/2020 - 4/2020	Percent Change
ABIA						
Total Passenger Activity						
Domestic Enplaned Revenue	396,498	19,269	1,957.70%	1,079,320	1,476,642	-26.91%
Domestic Deplaned Revenue	386,178	18,218	2,019.76%	1,087,504	1,501,307	-27.56%
International Enplaned Revenue	3,892	0	0.00%	8,089	30,817	-73.75%
International Deplaned Revenue	3,830	0	0.00%	8,481	34,001	-75.06%
Domestic Enplaned Non-Revenue	10,421	4,693	122.05%	31,847	44,426	-28.31%
Domestic Deplaned Non-Revenue	10,016	4,309	132.44%	30,991	41,388	-25.12%
International Enplaned Non-Revenue	34	0	0.00%	78	481	-83.78%
International Deplaned Non-Revenue	23	0	0.00%	40	409	-90.22%
Intl Enplaned Pre-Cleared Revenue	0	0	0.00%	0	5,483	-100.00%
Intl Deplaned Pre-Cleared Revenue	0	0	0.00%	0	4,626	-100.00%
Intl Enplaned Pre-Cleared Non-Revenue	0	0	0.00%	0	108	-100.00%
Intl Deplaned Pre-Cleared Non-Revenue	0	0	0.00%	0	100	-100.00%
South Terminal Domestic Enplaned Revenue	15,424	674	2,188.43%	44,285	65,360	-32.24%
South Terminal Domestic Deplaned Revenue	14,594	607	2,304.28%	44,152	68,632	-35.67%
South Terminal Domestic Enplaned Non-Revenue	82	7	1,071.43%	204	306	-33.33%
South Terminal Domestic Deplaned Non-Revenue	97	4	2,325.00%	220	292	-24.66%
ABIA Passenger Totals	841,089	47,781	1660.30%	2,335,211	3,274,378	-28.68%
<i>ABIA Enplaned Passenger Totals</i>	<i>426,351</i>	<i>24,643</i>	<i>1630.11%</i>	<i>1,163,823</i>	<i>1,623,623</i>	<i>-28.32%</i>
<i>ABIA Deplaned Passenger Totals</i>	<i>414,738</i>	<i>23,138</i>	<i>1692.45%</i>	<i>1,171,388</i>	<i>1,650,755</i>	<i>-29.04%</i>
<i>ABIA Domestic Passenger Totals</i>	<i>833,310</i>	<i>47,781</i>	<i>1644.02%</i>	<i>2,318,523</i>	<i>3,198,353</i>	<i>-27.51%</i>
<i>ABIA International Passenger Totals</i>	<i>7,779</i>	<i>0</i>	<i>0.00%</i>	<i>16,688</i>	<i>76,025</i>	<i>-78.05%</i>

CURRENT PASSENGER RECORD = 1,643,016 RECORD SET = JULY 2019

Total Aircraft Operations

Air Carrier	8,488	3,562	138.29%	26,088	35,804	-27.14%
Commuter & Air Taxi	1,783	419	325.54%	6,389	3,986	60.29%
Military	397	332	19.58%	1,676	1,588	5.54%
General Aviation						
Itinerant	3,902	1,036	276.64%	13,301	9,789	35.88%
Local	0	0	0.00%	20	88	-77.27%
Total G.A.	3,902	1,036	276.64%	13,321	9,877	34.87%
Total Operations	14,570	5,349	172.39%	47,474	51,255	-7.38%

**Austin-Bergstrom International Airport
Aviation Activity Report
Calendar Year 2021 vs 2020**

By Terminal

	4/2021	4/2020	Percent Change	1/2021 - 4/2021	1/2020 - 4/2020	Percent Change
<u>Barbara Jordan Terminal (BJT)</u>						
Passenger Activity						
Domestic Enplaned Revenue	396,498	19,269	1957.70%	1,079,320	1,476,642	-26.91%
Domestic Deplaned Revenue	386,178	18,218	2019.76%	1,087,504	1,501,307	-73.75%
International Enplaned Revenue	3,892	0	0.00%	8,089	30,817	-75.06%
International Deplaned Revenue	3,830	0	0.00%	8,481	34,001	-75.06%
Domestic Enplaned Non-Revenue	10,421	4,693	122.05%	31,847	44,426	-28.31%
Domestic Deplaned Non-Revenue	10,016	4,309	132.44%	30,991	41,388	-25.12%
International Enplaned Non-Revenue	34	0	0.00%	78	481	-83.78%
International Deplaned Non-Revenue	23	0	0.00%	40	409	-90.22%
Intl Enplaned Pre-Cleared Revenue	0	0	0.00%	0	5,483	-100.00%
Intl Deplaned Pre-Cleared Revenue	0	0	0.00%	0	4,626	-100.00%
Intl Enplaned Pre-Cleared Non-Revenue	0	0	0.00%	0	108	-100.00%
Intl Deplaned Pre-Cleared Non-Revenue	0	0	0.00%	0	100	-100.00%
Barbara Jordan Terminal Passenger Totals	810,892	46,489	1644.27%	2,246,350	3,139,788	-28.46%
<i>BJT Enplaned Passenger Totals</i>	<i>410,845</i>	<i>23,962</i>	<i>1614.57%</i>	<i>1,119,334</i>	<i>1,557,957</i>	<i>-28.15%</i>
<i>BJT Deplaned Passenger Totals</i>	<i>400,047</i>	<i>22,527</i>	<i>1675.86%</i>	<i>1,127,016</i>	<i>1,581,831</i>	<i>-28.75%</i>
<i>BJT Domestic Passenger Totals</i>	<i>803,113</i>	<i>46,489</i>	<i>1627.53%</i>	<i>2,229,662</i>	<i>3,063,763</i>	<i>-27.22%</i>
<i>BJT International Passenger Totals</i>	<i>7,779</i>	<i>0</i>	<i>0.00%</i>	<i>16,688</i>	<i>76,025</i>	<i>-78.05%</i>
<u>South Terminal (ST)</u>						
Passenger Activity						
South Terminal Domestic Enplaned Revenue	15,424	674	2188.43%	44,285	65,360	-32.24%
South Terminal Domestic Deplaned Revenue	14,594	607	2304.28%	44,152	68,632	-35.67%
South Terminal Domestic Enplaned Non-Revenue	82	7	1071.43%	204	306	-33.33%
South Terminal Domestic Deplaned Non-Revenue	97	4	2325.00%	220	292	-24.66%
South Terminal Passenger Totals	30,197	1,292	2237.23%	88,861	134,590	-33.98%
<i>ST Enplaned Passenger Totals</i>	<i>15,506</i>	<i>681</i>	<i>2176.95%</i>	<i>44,489</i>	<i>65,666</i>	<i>-32.25%</i>
<i>ST Deplaned Passenger Totals</i>	<i>14,691</i>	<i>611</i>	<i>2304.42%</i>	<i>44,372</i>	<i>68,924</i>	<i>-35.62%</i>

**Austin-Bergstrom International Airport
Aviation Activity Report
Calendar Year 2021 vs 2020**

	4/2021	4/2020	Percent Change	1/2021 - 4/2021	1/2020 - 4/2020	Percent Change
<u>Total Cargo Activity</u>						
Mail						
Domestic Enplaned Mail	134,292	8,492	1,481.39%	546,832	767,549	-28.76%
Domestic Deplaned Mail	563,759	126,454	345.82%	1,822,652	2,198,077	-17.08%
International Enplaned Mail	0	0	0.00%	0	0	0.00%
International Deplaned Mail	0	0	0.00%	0	0	0.00%
South Terminal-Domestic Enplaned Mail	0	0	0.00%	0	0	0.00%
South Terminal-Domestic Deplaned Mail	0	0	0.00%	0	0	0.00%
Mail Totals	698,051	134,946	417.28%	2,369,484	2,965,626	-20.10%
Cargo						
Domestic Enplaned Cargo	7,513,365	4,993,382	50.47%	29,634,246	19,340,073	53.23%
Domestic Deplaned Cargo	10,150,768	7,518,444	35.01%	35,771,106	28,629,564	24.94%
International Enplaned Cargo	15,972	178,024	-91.03%	75,562	945,301	-92.01%
International Deplaned Cargo	178,937	70,163	155.03%	193,557	481,474	-59.80%
South Terminal-Domestic Enplaned Cargo	0	0	0.00%	0	0	0.00%
South Terminal-Domestic Deplaned Cargo	0	0	0.00%	0	0	0.00%
Cargo Totals	17,859,042	12,760,013	39.96%	65,674,471	49,396,412	32.95%
Belly Freight						
Domestic Enplaned Belly Freight	244,911	414,086	-40.86%	686,369	1,129,380	-39.23%
Domestic Deplaned Belly Freight	452,188	463,957	-2.54%	1,457,480	1,794,418	-18.78%
International Enplaned Belly Freight	0	0	0.00%	0	1,033,720	-100.00%
International Deplaned Belly Freight	0	0	0.00%	0	2,056,175	-100.00%
South Terminal-Domestic Enplaned Belly Frght	0	0	0.00%	0	0	0.00%
South Terminal-Domestic Deplaned Belly Frght	0	0	0.00%	0	0	0.00%
Belly Freight Totals	697,099	878,043	-20.61%	2,143,849	6,013,693	-64.35%
Cargo Totals (Mail, Cargo, Belly Freight)	19,254,192	13,773,002	39.80%	70,187,804	58,375,731	20.23%
<i>Enplaned Cargo Totals</i>	<i>7,908,540</i>	<i>5,593,984</i>	<i>41.38%</i>	<i>30,943,009</i>	<i>23,216,023</i>	<i>33.28%</i>
<i>Deplaned Cargo Totals</i>	<i>11,345,652</i>	<i>8,179,018</i>	<i>38.72%</i>	<i>39,244,795</i>	<i>35,159,708</i>	<i>11.62%</i>
<i>Domestic Cargo Totals</i>	<i>19,059,283</i>	<i>13,524,815</i>	<i>40.92%</i>	<i>69,918,685</i>	<i>53,859,061</i>	<i>29.82%</i>
<i>International Cargo Totals</i>	<i>194,909</i>	<i>248,187</i>	<i>-21.47%</i>	<i>269,119</i>	<i>4,516,670</i>	<i>-94.04%</i>

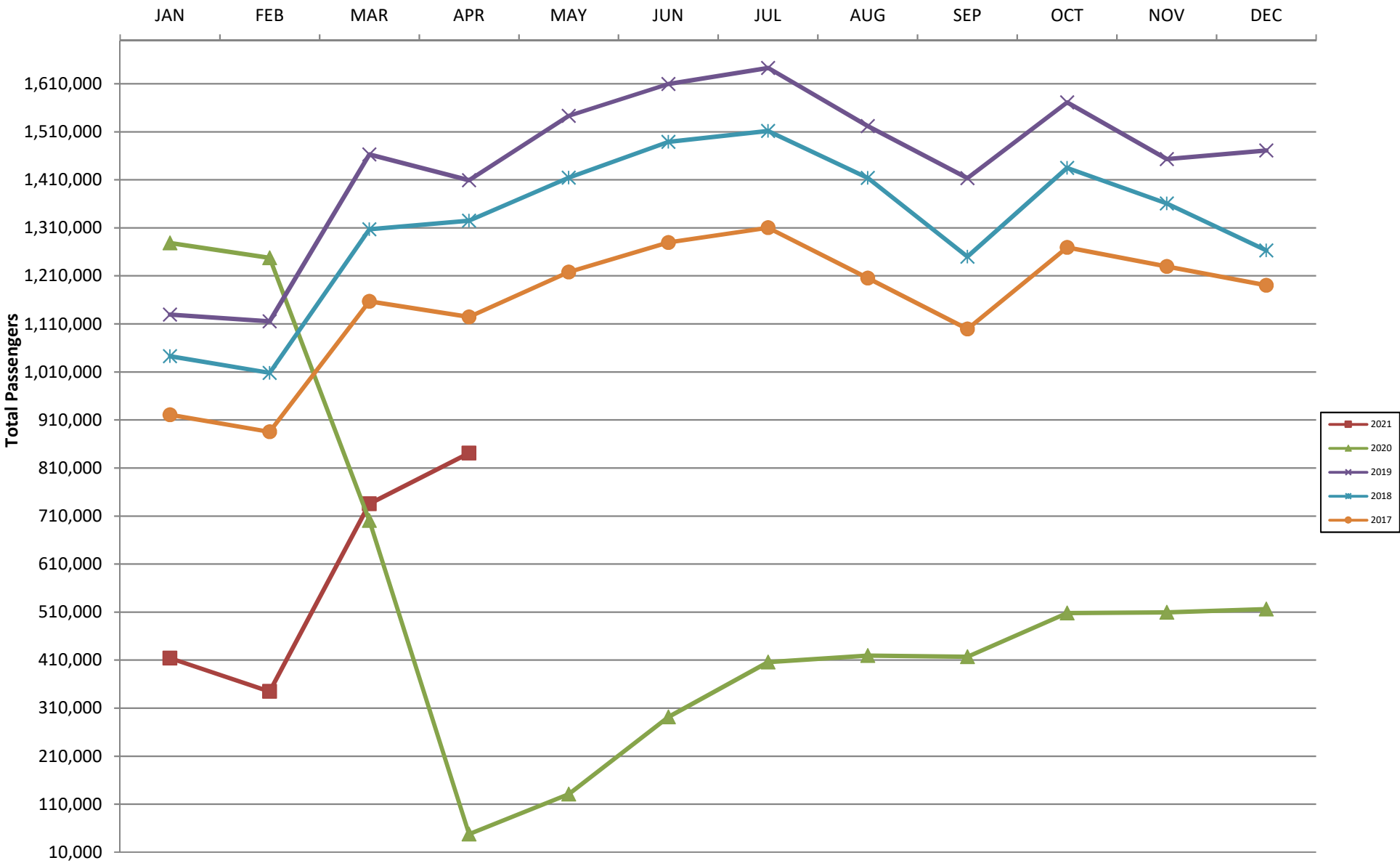
CURRENT CARGO RECORD = 40,215,518

RECORD SET = MARCH 2001

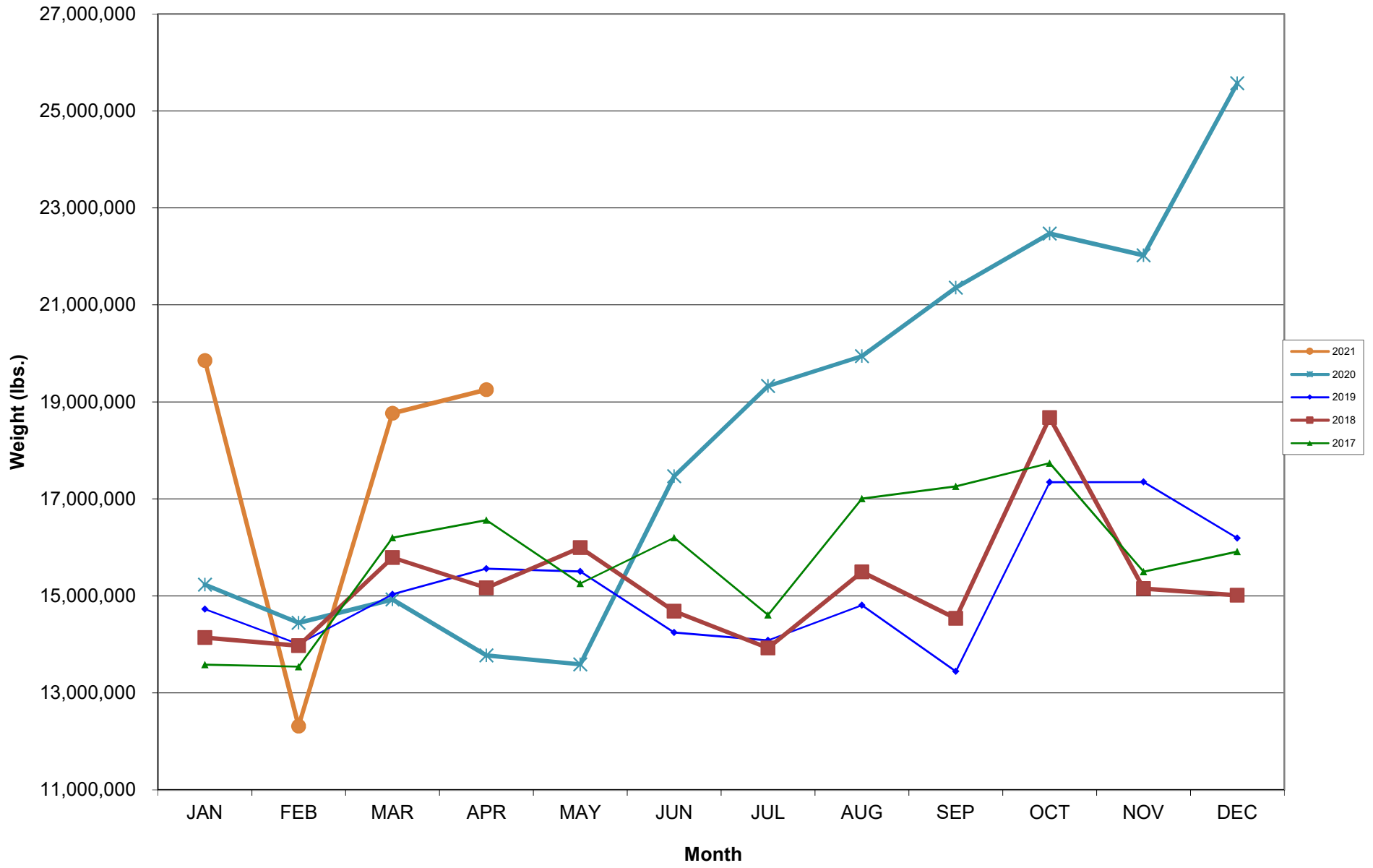
AUS – Airline Codes
April 2021

<u>Code</u>	<u>Carrier</u>
AS	Alaska Airlines, Inc.
G4	Allegiant Air, LLC
AA	American Airlines, Inc.
DL	Delta Air Lines
F9	Frontier Airlines, Inc.
HA	Hawaiian Airlines, Inc.
B6	JetBlue Airways Corp.
WN	Southwest Airlines
NK	Spirit Airlines, Inc.
SY	Sun Country Airlines/MN Airlines LLC
WQ	Swift Air LLC
UA	United Airlines, Inc.

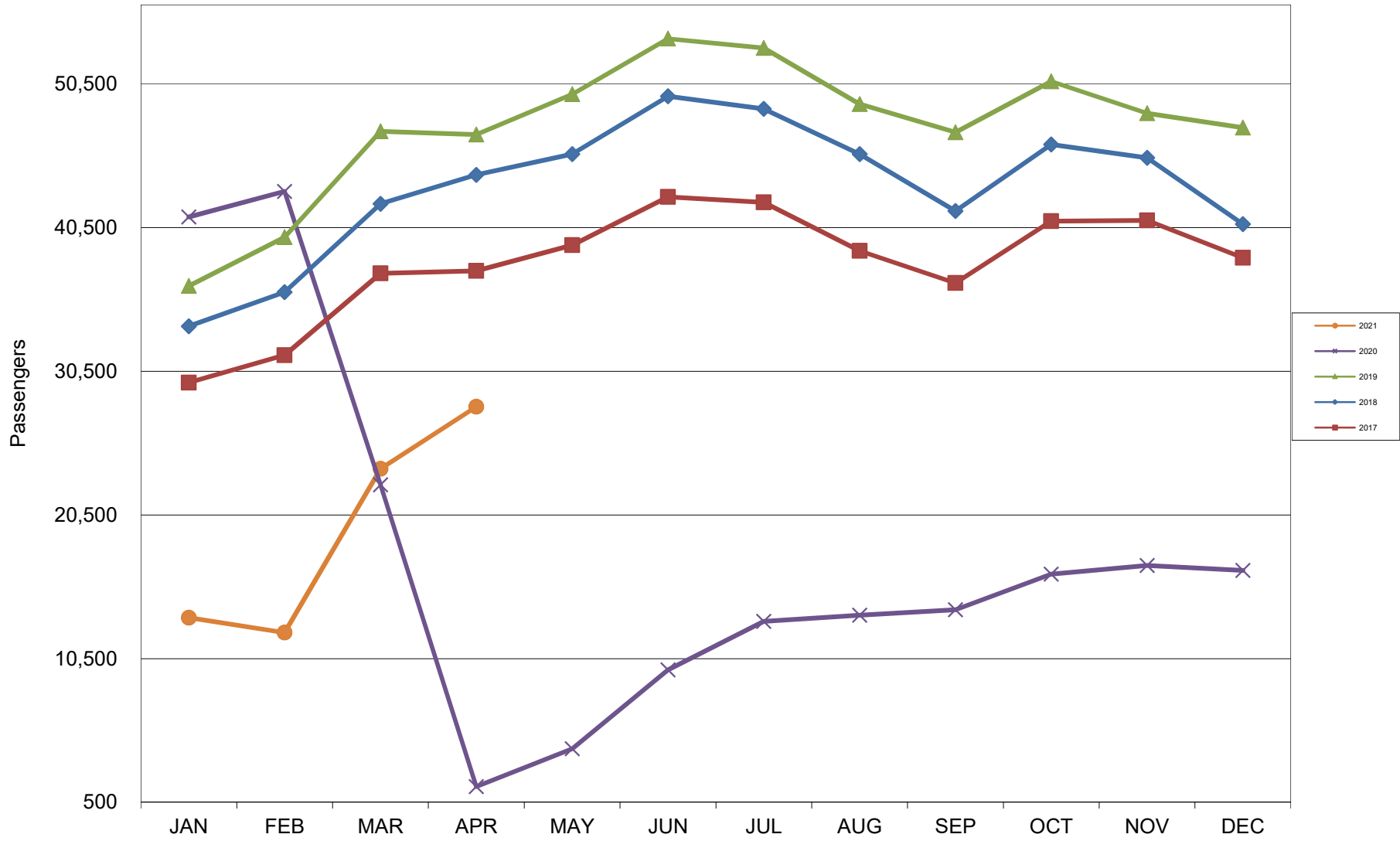
AUSTIN PASSENGER TRAFFIC 5 Year Trend



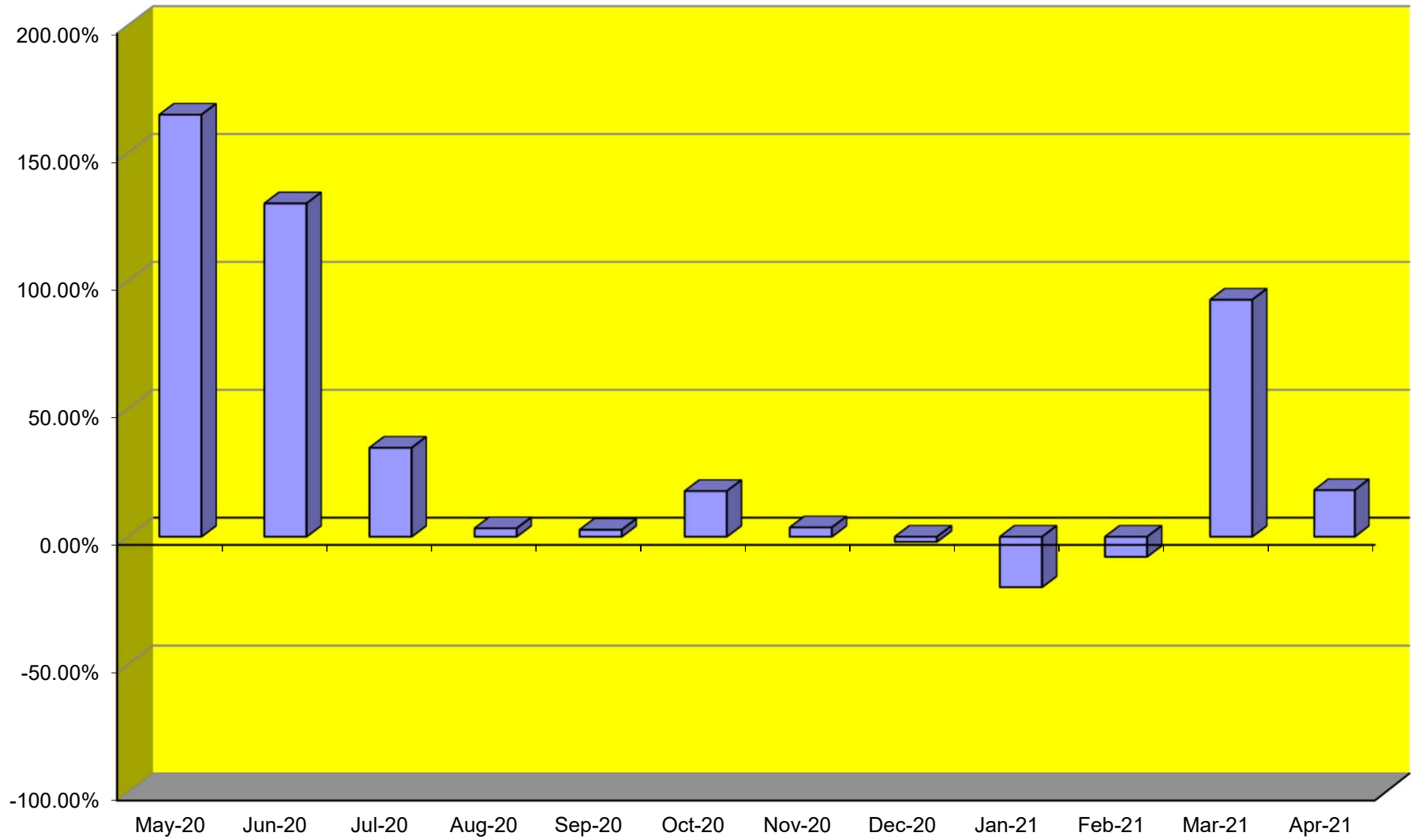
TOTAL CARGO POUNDAGE - AUSTIN, TEXAS



Average Daily Passengers



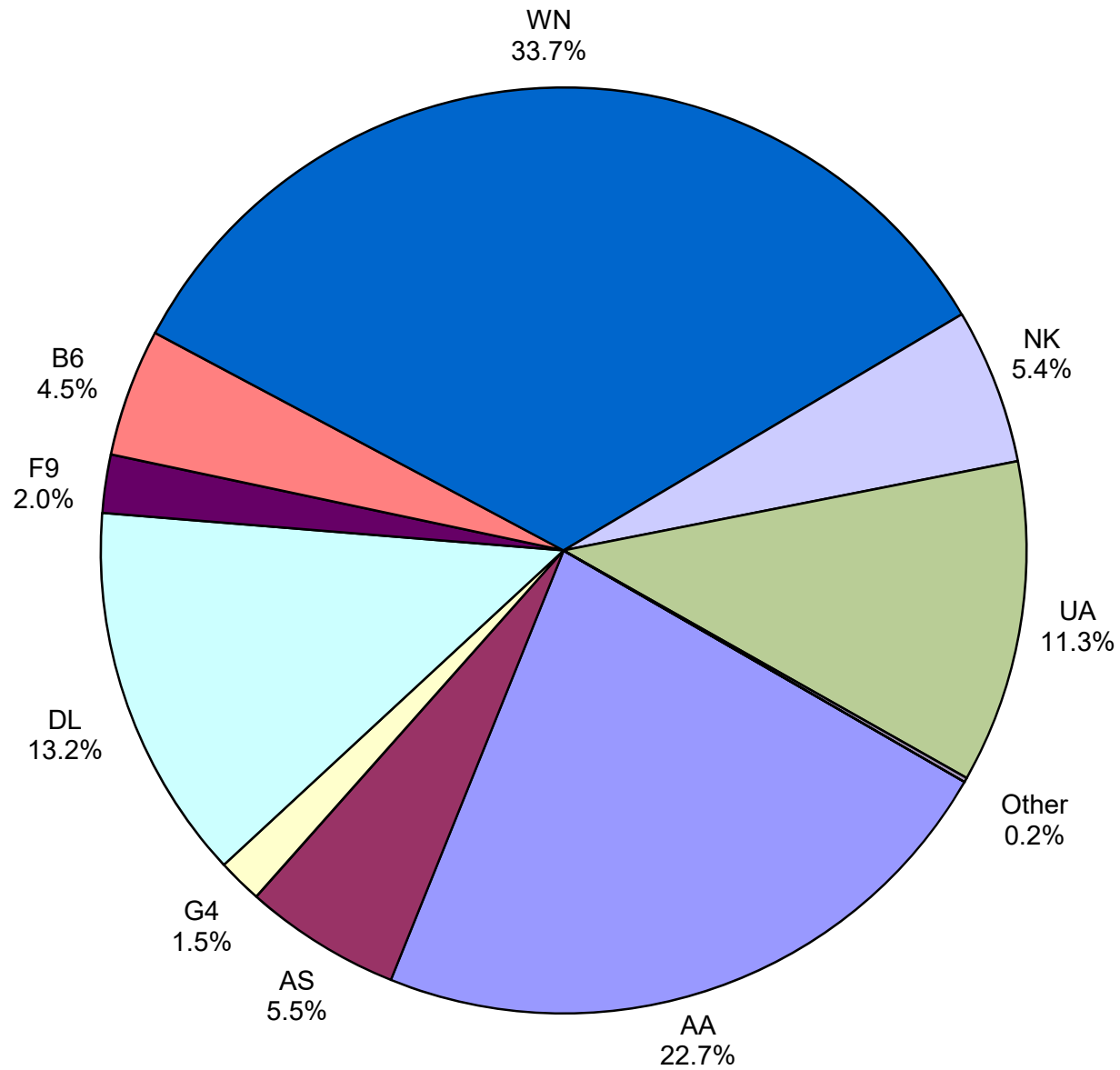
Monthly % Change in Average Daily Passengers



HISTORY OF INTERNATIONAL AIR CARGO



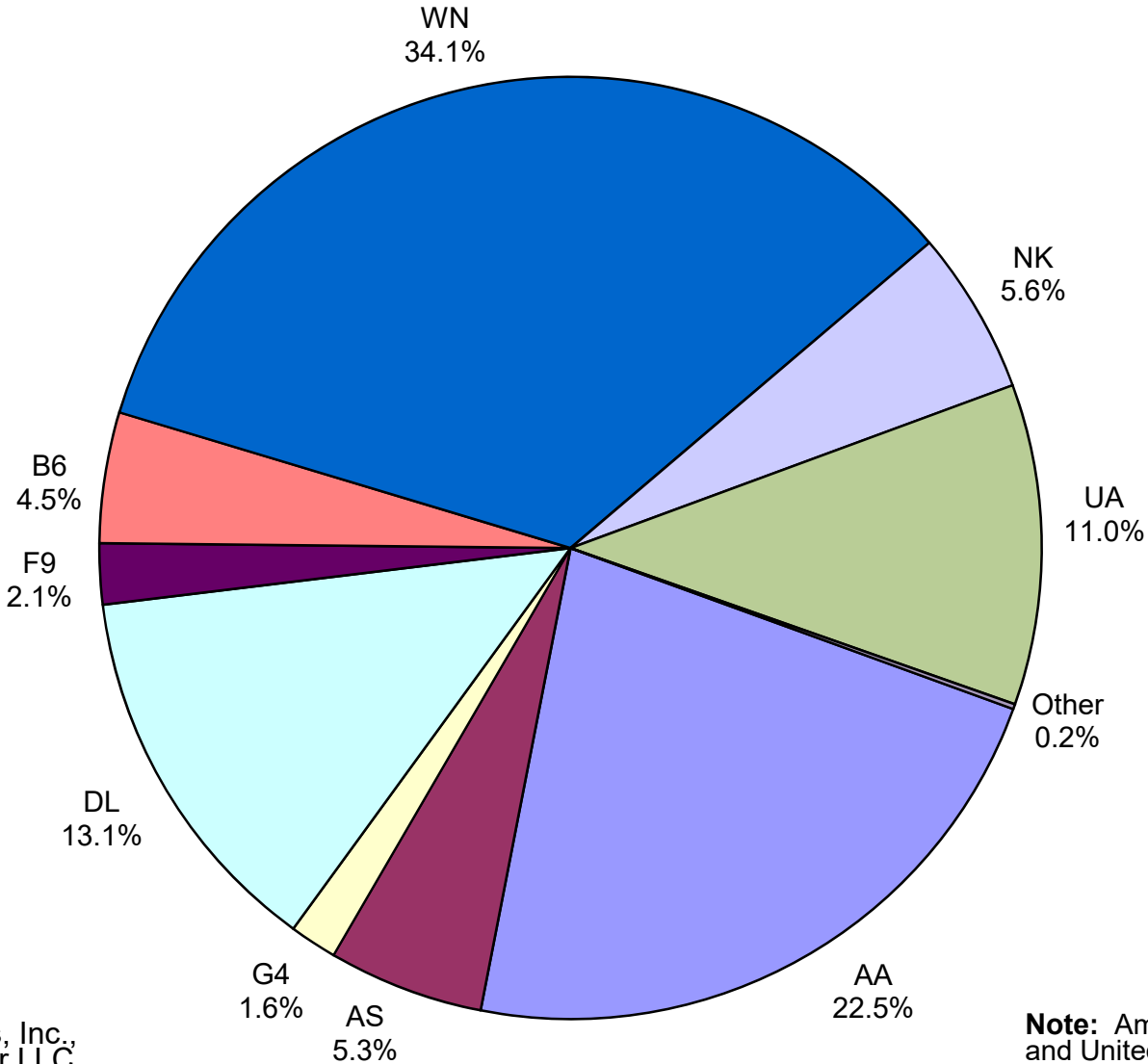
**Total Passengers
April 2021**



Other: Hawaiian Airlines, Inc.,
Sun Country and Swift Air LLC

Note: American, Delta and United Airlines
percentages include Affiliates.

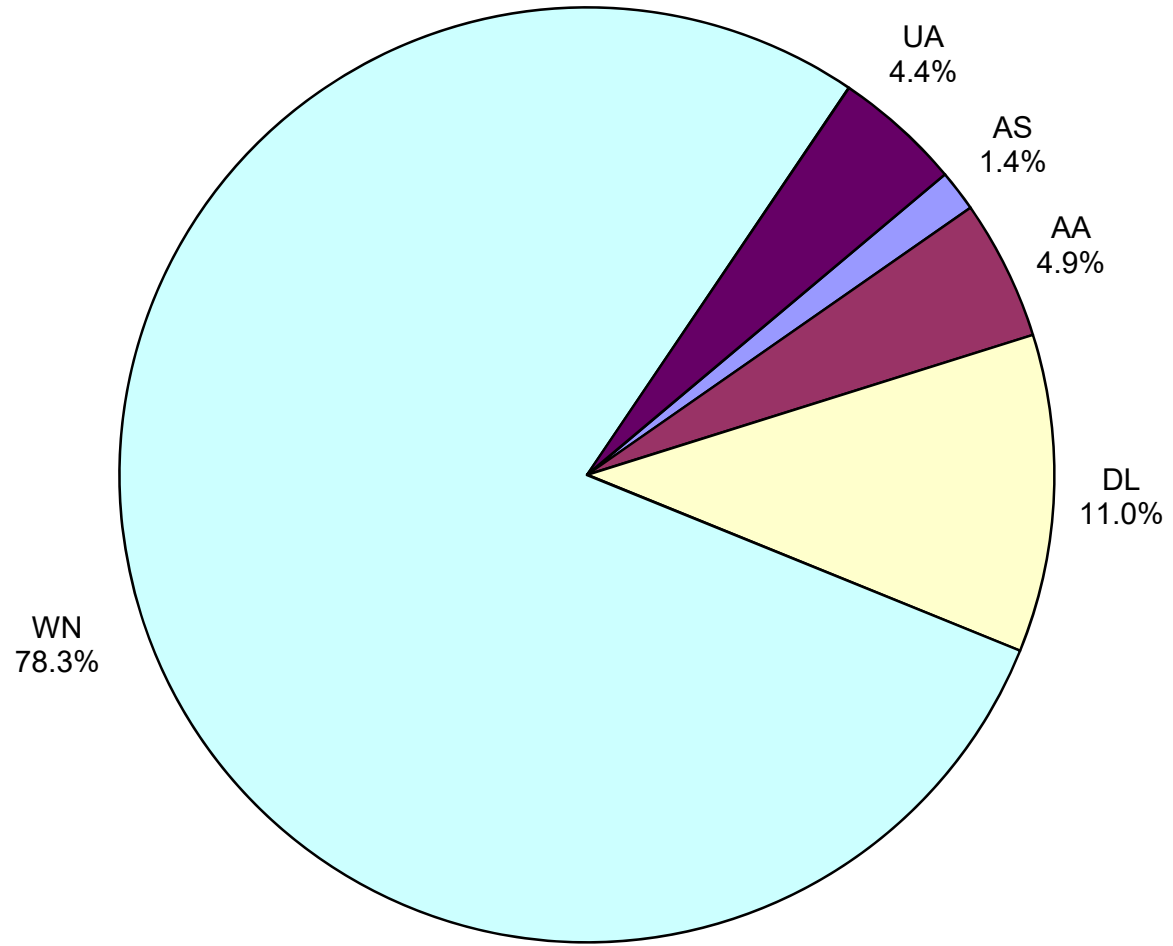
**All Passenger Carriers
Enplaned Revenue Passengers
April 2021**



Other: Hawaiian Airlines, Inc., Sun Country and Swift Air LLC

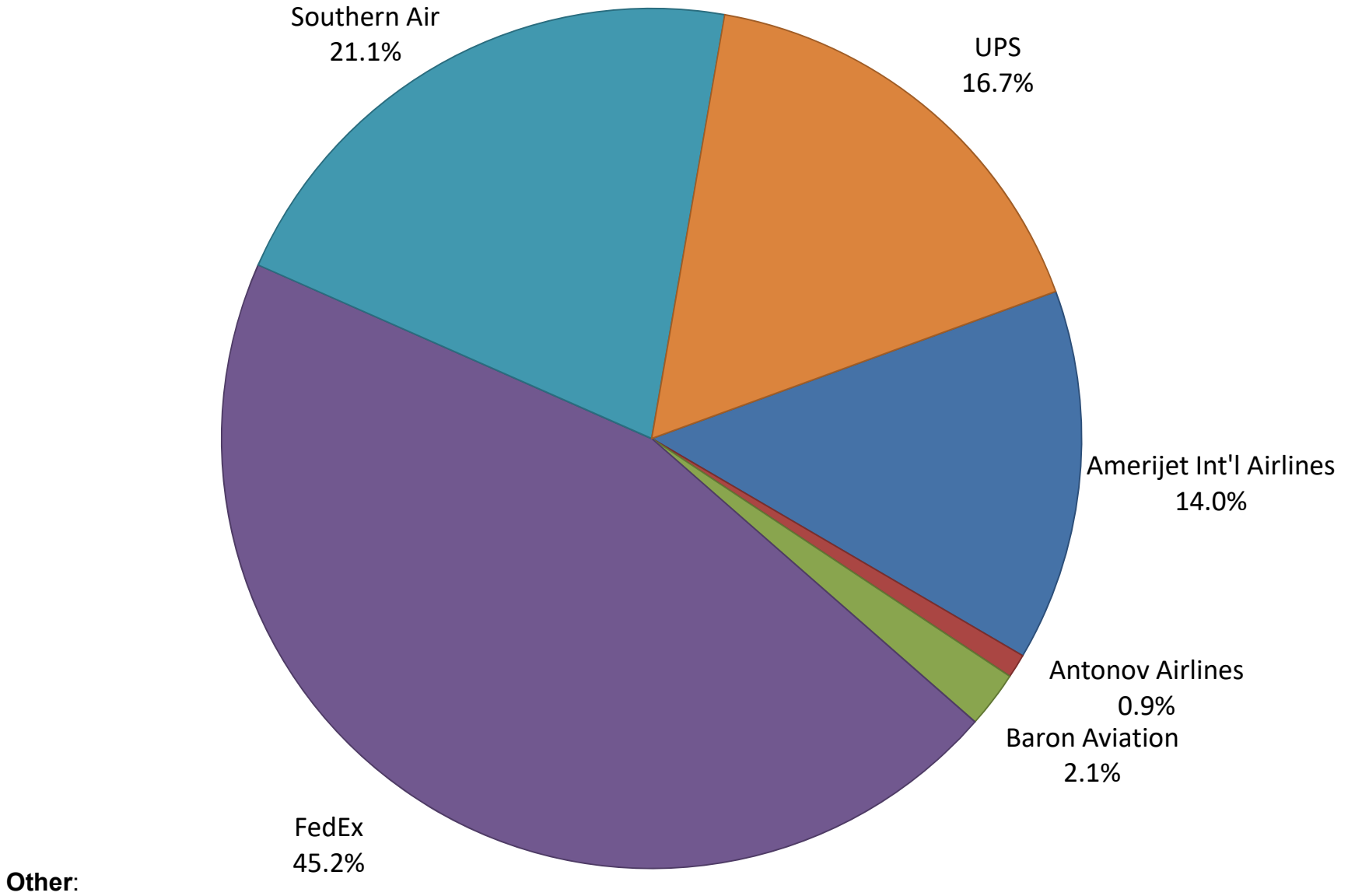
Note: American/US Airways, Delta and United Airlines percentages include Affiliates.

**AUS Belly Freight Market Shares
April 2021**

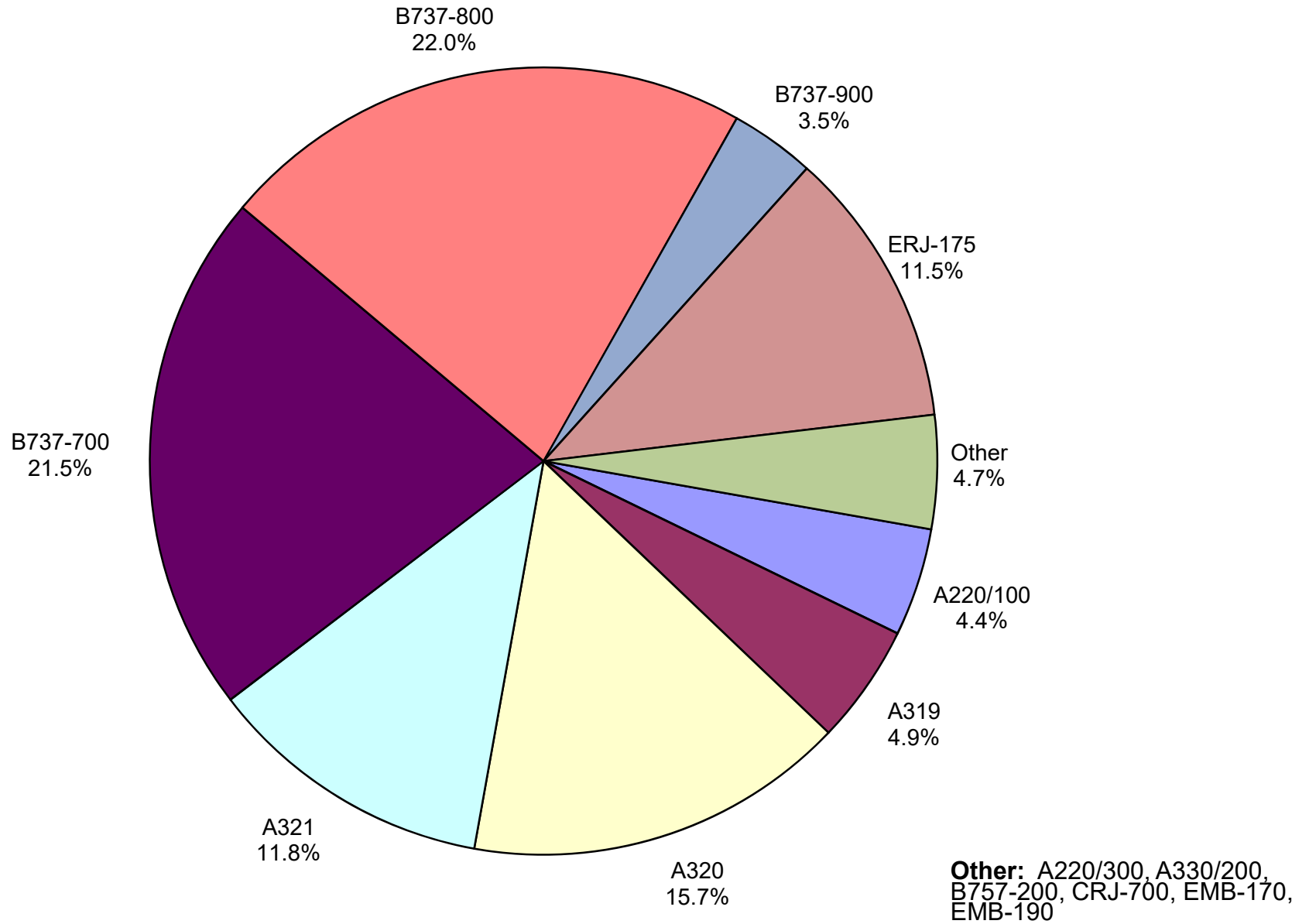


Other =

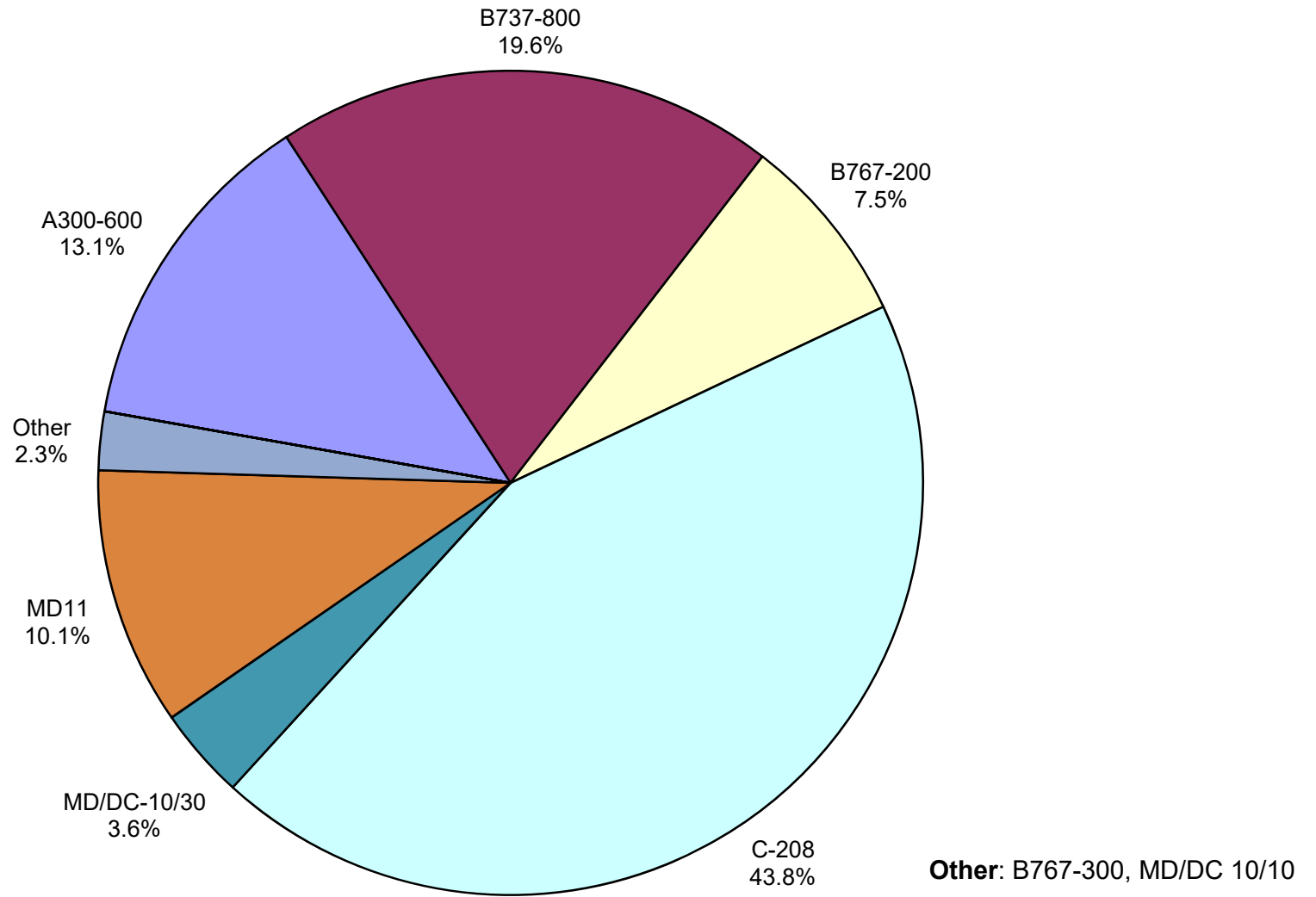
Air Cargo Market Share April 2021



**AUS Scheduled Passenger Aircraft Fleet Mix
April 2021**



AUS Scheduled Cargo Aircraft Fleet Mix April 2021



Austin-Bergstrom International Airport

Pax Detail Report - April, 2021

Company	Period				YTD				2021 Share	2020 Share	Share Diff
	4/2021	4/2020	Difference	Change	YTD 2021	YTD 2020	Difference	Change			
Aeroenlaces Nacionales, SA DE CV	0	0	0	0.0	0	197	-197	-100.0	0.0	0.0	0.0
Aerovias de Mexico S.A. de C.V. Pre Bankruptcy	0	0	0	0.0	0	9,915	-9,915	-100.0	0.0	0.3	-0.3
Air Canada	0	0	0	0.0	0	10,317	-10,317	-100.0	0.0	0.3	-0.3
Alaska Airlines INC	46,042	1,493	44,549	2,983.9	105,844	118,773	-12,929	-10.9	4.5	3.6	0.9
Allegiant Air LLC	13,111	0	13,111	0.0	30,562	18,475	12,087	65.4	1.3	0.6	0.7
American Airlines INC	191,366	13,255	178,111	1,343.7	494,663	625,666	-131,003	-20.9	21.2	19.1	2.1
British Airways PLC	0	0	0	0.0	0	29,217	-29,217	-100.0	0.0	0.9	-0.9
Delta Air Lines	110,816	6,130	104,686	1,707.8	315,161	469,097	-153,936	-32.8	13.5	14.3	-0.8
Deutsche Lufthansa AG	0	0	0	0.0	0	15,883	-15,883	-100.0	0.0	0.5	-0.5
Frontier Airlines INC	17,086	1,292	15,794	1,222.4	58,299	116,115	-57,816	-49.8	2.5	3.5	-1.0
Hawaiian Airlines Inc	872	0	872	0.0	872	0	872	0.0	0.0	0.0	0.0
JetBlue Airways Corporation	37,523	466	37,057	7,952.1	109,237	120,363	-11,126	-9.2	4.7	3.7	1.0
Miami Air International INC Pre Bankruptcy	0	0	0	0.0	0	121	-121	-100.0	0.0	0.0	0.0
Norwegian Air UK LTD	0	0	0	0.0	0	3,474	-3,474	-100.0	0.0	0.1	-0.1
Southwest Airlines	283,394	19,337	264,057	1,365.6	779,937	1,052,067	-272,130	-25.9	33.4	32.1	1.3
Spirit Airlines Inc	45,670	1,614	44,056	2,729.6	136,928	207,936	-71,008	-34.1	5.9	6.4	-0.5
Sun Country Airlines/MN Airlines LLC	249	0	249	0.0	531	643	-112	-17.4	0.0	0.0	0.0
Swift Air LLC	213	0	213	0.0	712	928	-216	-23.3	0.0	0.0	0.0
United Airlines INC	94,747	4,194	90,553	2,159.1	302,465	475,191	-172,726	-36.3	13.0	14.5	-1.5
Report Totals	841,089	47,781	793,308	1,660.3%	2,335,211	3,274,378	-939,167	-28.7%	100.0%	99.9%	

Statistics Included in Report

Domestic Passengers: Enplaned Revenue, Deplaned Revenue, Enplaned Non-Revenue, Deplaned Non-Revenue

International Passengers: Enplaned Revenue, Deplaned Revenue, Enplaned Non-Revenue, Deplaned Non-Revenue

International Pre-Cleared Passengers: Enplaned Revenue, Deplaned Revenue, Enplaned Non-Revenue, Deplaned Non-Revenue

South Terminal Domestic Passengers: Enplaned Revenue, Deplaned Revenue, Enplaned Non-Revenue, Deplaned Non-Revenue

Austin-Bergstrom International Airport

Summary Landings Report

Landing Type: Total

Month	2021		2020		2019		% Change 2021- 2020		% Change 2020- 2019	
	Count	Weight	Count	Weight	Count	Weight	Count	Weight	Count	Weight
January	2,839	399,216,719	5,762	812,175,948	5,348	733,746,679	-50.73%	-50.85%	7.74%	10.69%
February	2,194	303,710,832	5,382	764,833,023	5,040	692,708,930	-59.23%	-60.29%	6.79%	10.41%
March	4,076	547,982,160	5,278	742,099,772	5,964	825,483,911	-22.77%	-26.16%	-11.50%	-10.10%
April	4,343	588,391,731	1,884	264,508,162	5,899	815,621,798	130.52%	122.45%	-68.06%	-67.57%
May	0	0	1,608	223,266,578	6,294	881,747,150	-100.00%	-100.00%	-74.45%	-74.68%
June	0	0	2,119	293,669,395	6,322	890,410,020	-100.00%	-100.00%	-66.48%	-67.02%
July	0	0	3,401	458,639,882	6,551	915,103,306	-100.00%	-100.00%	-48.08%	-49.88%
August	0	0	3,390	473,872,571	6,447	906,499,773	-100.00%	-100.00%	-47.42%	-47.73%
September	0	0	2,791	378,925,681	6,020	848,899,951	-100.00%	-100.00%	-53.64%	-55.36%
October	0	0	2,972	409,225,230	6,459	916,700,076	-100.00%	-100.00%	-53.99%	-55.36%
November	0	0	3,157	438,563,290	5,924	836,527,780	-100.00%	-100.00%	-46.71%	-47.57%
December	0	0	3,126	431,926,302	6,078	848,973,148	-100.00%	-100.00%	-48.57%	-49.12%
Totals For Selected Period	13,452	1,839,301,442	18,306	2,583,616,905	22,251	3,067,561,318	-26.52%	-28.81%	-17.73%	-15.78%
Yearly Totals	13,452	1,839,301,442	40,870	5,691,705,834	72,346	10,112,422,522	-67.09%	-67.68%	-43.51%	-43.72%