

**Austin-Bergstrom International Airport  
Aviation Activity Report  
Calendar Year 2018 vs 2017**

**Combined Terminals**

	3/2018	3/2017	Percent Change	1/2018 - 3/2018	1/2017 - 3/2017	Percent Change
<b>ABIA</b>						
<b>Total Passenger Activity</b>						
Domestic Enplaned Revenue	594,917	547,253	8.71	1,541,020	1,399,673	10.10
Domestic Deplaned Revenue	620,153	556,890	11.36	1,583,393	1,422,320	11.32
International Enplaned Revenue	13,757	12,057	14.10	32,860	30,466	7.86
International Deplaned Revenue	14,748	11,759	25.42	36,248	31,344	15.65
Domestic Enplaned Non-Revenue	13,993	13,062	7.13	39,478	35,431	11.42
Domestic Deplaned Non-Revenue	12,884	12,730	1.21	37,187	34,125	8.97
International Enplaned Non-Revenue	151	110	37.27	376	239	57.32
International Deplaned Non-Revenue	152	62	145.16	270	197	37.06
Intl Enplaned Pre-Cleared Revenue	1,967	1,384	42.12	4,924	4,408	11.71
Intl Deplaned Pre-Cleared Revenue	2,015	1,572	28.18	5,364	4,855	10.48
Intl Enplaned Pre-Cleared Non-Revenue	24	21	14.29	71	67	5.97
Intl Deplaned Pre-Cleared Non-Revenue	34	28	21.43	72	74	-2.70
South Terminal Domestic Enplaned Revenue	15,779	0	0.00	37,575	0	0.00
South Terminal Domestic Deplaned Revenue	16,208	0	0.00	38,811	0	0.00
South Terminal Domestic Enplaned Non-Revenue	3	0	0.00	12	0	0.00
South Terminal Domestic Deplaned Non-Revenue	3	0	0.00	13	0	0.00
<b>ABIA Passenger Totals</b>	<b>1,306,788</b>	<b>1,156,928</b>	<b>12.95</b>	<b>3,357,674</b>	<b>2,963,199</b>	<b>13.31</b>
<i>ABIA Enplaned Passenger Totals</i>	<i>640,591</i>	<i>573,887</i>	<i>11.62</i>	<i>1,656,316</i>	<i>1,470,284</i>	<i>12.65</i>
<i>ABIA Deplaned Passenger Totals</i>	<i>666,197</i>	<i>583,041</i>	<i>14.26</i>	<i>1,701,358</i>	<i>1,492,915</i>	<i>13.96</i>
<i>ABIA Domestic Passenger Totals</i>	<i>1,273,940</i>	<i>1,129,935</i>	<i>12.74</i>	<i>3,277,489</i>	<i>2,891,549</i>	<i>13.35</i>
<i>ABIA International Passenger Totals</i>	<i>32,848</i>	<i>26,993</i>	<i>21.69</i>	<i>80,185</i>	<i>71,650</i>	<i>11.91</i>

**CURRENT PASSENGER RECORD = 1,310,174 RECORD SET = JULY 2017**

**Total Aircraft Operations**

Air Carrier	10,949	10,329	6.00	29,929	28,193	6.16
Commuter & Air Taxi	1,706	1,533	11.29	4,396	3,848	14.24
Military	832	894	-6.94	1,887	2,626	-28.14
General Aviation						
Itinerant	4,352	4,577	-4.92	11,097	12,821	-13.45
Local	264	206	28.16	429	524	-18.13
Total G.A.	4,616	4,783	-3.49	11,526	13,345	-13.63
<b>Total Operations</b>	<b>18,103</b>	<b>17,539</b>	<b>3.22</b>	<b>47,738</b>	<b>48,012</b>	<b>-0.57</b>

**Austin-Bergstrom International Airport  
Aviation Activity Report  
Calendar Year 2018 vs 2017**

**By Terminal**

	3/2018	3/2017	Percent Change	1/2018 - 3/2018	1/2017 - 3/2017	Percent Change
<b><u>Barbara Jordan Terminal (BJT)</u></b>						
<b>Passenger Activity</b>						
Domestic Enplaned Revenue	594,917	547,253	8.71	1,541,020	1,399,673	10.10
Domestic Deplaned Revenue	620,153	556,890	11.36	1,583,393	1,422,320	11.32
International Enplaned Revenue	13,757	12,057	14.10	32,860	30,466	7.86
International Deplaned Revenue	14,748	11,759	25.42	36,248	31,344	15.65
Domestic Enplaned Non-Revenue	13,993	13,062	7.13	39,478	35,431	11.42
Domestic Deplaned Non-Revenue	12,884	12,730	1.21	37,187	34,125	8.97
International Enplaned Non-Revenue	151	110	37.27	376	239	57.32
International Deplaned Non-Revenue	152	62	145.16	270	197	37.06
Intl Enplaned Pre-Cleared Revenue	1,967	1,384	42.12	4,924	4,408	11.71
Intl Deplaned Pre-Cleared Revenue	2,015	1,572	28.18	5,364	4,855	10.48
Intl Enplaned Pre-Cleared Non-Revenue	24	21	14.29	71	67	5.97
Intl Deplaned Pre-Cleared Non-Revenue	34	28	21.43	72	74	-2.70

**Barbara Jordan Terminal Passenger Totals**

<b>1,274,795</b>	<b>1,156,928</b>	<b>10.19</b>	<b>3,281,263</b>	<b>2,963,199</b>	<b>10.73</b>
------------------	------------------	--------------	------------------	------------------	--------------

<i>BJT Enplaned Passenger Totals</i>	624,809	573,887	8.87	1,618,729	1,470,284	10.10
<i>BJT Deplaned Passenger Totals</i>	649,986	583,041	11.48	1,662,534	1,492,915	11.36
<i>BJT Domestic Passenger Totals</i>	1,241,947	1,129,935	9.91	3,201,078	2,891,549	10.70
<i>BJT International Passenger Totals</i>	32,848	26,993	21.69	80,185	71,650	11.91

**South Terminal (ST)**

**Passenger Activity**

South Terminal Domestic Enplaned Revenue	15,779	0	0.00	37,575	0	0.00
South Terminal Domestic Deplaned Revenue	16,208	0	0.00	38,811	0	0.00
South Terminal Domestic Enplaned Non-Revenue	3	0	0.00	12	0	0.00
South Terminal Domestic Deplaned Non-Revenue	3	0	0.00	13	0	0.00

**South Terminal Passenger Totals**

<b>31,993</b>	<b>0</b>	<b>0.00</b>	<b>76,411</b>	<b>0</b>	<b>0.00</b>
---------------	----------	-------------	---------------	----------	-------------

<i>ST Enplaned Passenger Totals</i>	15,782	0	0	37,587	0	0
<i>ST Deplaned Passenger Totals</i>	16,211	0	0	38,824	0	0

**Austin-Bergstrom International Airport  
Aviation Activity Report  
Calendar Year 2018 vs 2017**

	<b>3/2018</b>	<b>3/2017</b>	<b>Percent Change</b>	<b>1/2018 - 3/2018</b>	<b>1/2017 - 3/2017</b>	<b>Percent Change</b>
<b><u>Total Cargo Activity</u></b>						
<b>Mail</b>						
Domestic Enplaned Mail	198,668	214,099	-7.21	514,465	563,626	-8.72
Domestic Deplaned Mail	387,955	361,393	7.35	1,169,034	909,762	28.50
International Enplaned Mail	0	0	0.00	0	0	0.00
International Deplaned Mail	0	0	0.00	0	0	0.00
South Terminal-Intl Enplaned Mail	0	0	0.00	0	0	0.00
South Terminal-Intl Deplaned Mail	0	0	0.00	0	0	0.00
<b>Mail Totals</b>	<b>586,623</b>	<b>575,492</b>	<b>1.93</b>	<b>1,683,499</b>	<b>1,473,388</b>	<b>14.26</b>
<b>Cargo</b>						
Domestic Enplaned Cargo	5,485,713	5,298,906	3.53	14,780,985	14,273,877	3.55
Domestic Deplaned Cargo	7,440,235	7,506,344	-0.88	20,651,935	19,877,642	3.90
International Enplaned Cargo	489,217	714,771	-31.56	1,634,154	1,952,706	-16.31
International Deplaned Cargo	233,705	263,351	-11.26	570,402	803,082	-28.97
South Terminal-Intl Enplaned Cargo	0	0	0.00	0	0	0.00
South Terminal-Intl Deplaned Cargo	0	0	0.00	0	0	0.00
<b>Cargo Totals</b>	<b>13,648,870</b>	<b>13,783,372</b>	<b>-0.98</b>	<b>37,637,476</b>	<b>36,907,307</b>	<b>1.98</b>
<b>Belly Freight</b>						
Domestic Enplaned Belly Freight	186,032	265,588	-29.95	699,988	657,636	6.44
Domestic Deplaned Belly Freight	392,994	530,646	-25.94	1,189,223	1,333,067	-10.79
International Enplaned Belly Freight	324,892	248,653	30.66	857,661	694,793	23.44
International Deplaned Belly Freight	652,476	793,676	-17.79	1,834,140	2,254,933	-18.66
South Terminal-Intl Enplaned Belly Freight	0	0	0.00	0	0	0.00
South Terminal-Intl Deplaned Belly Freight	0	0	0.00	0	0	0.00
<b>Belly Freight Totals</b>	<b>1,556,394</b>	<b>1,838,563</b>	<b>-15.35</b>	<b>4,581,012</b>	<b>4,940,429</b>	<b>-7.28</b>
<b>Cargo Totals (Mail, Cargo, Belly Freight)</b>	<b>15,791,887</b>	<b>16,197,427</b>	<b>-2.50</b>	<b>43,901,987</b>	<b>43,321,124</b>	<b>1.34</b>
<i>Enplaned Cargo Totals</i>	<i>6,684,522</i>	<i>6,742,017</i>	<i>-0.85</i>	<i>18,487,253</i>	<i>18,142,638</i>	<i>1.90</i>
<i>Deplaned Cargo Totals</i>	<i>9,107,365</i>	<i>9,455,410</i>	<i>-3.68</i>	<i>25,414,734</i>	<i>25,178,486</i>	<i>0.94</i>
<i>Domestic Cargo Totals</i>	<i>14,091,597</i>	<i>14,176,976</i>	<i>-0.60</i>	<i>39,005,630</i>	<i>37,615,610</i>	<i>3.70</i>
<i>International Cargo Totals</i>	<i>1,700,290</i>	<i>2,020,451</i>	<i>-15.85</i>	<i>4,896,357</i>	<i>5,705,514</i>	<i>-14.18</i>

CURRENT CARGO RECORD = 40,215,518

RECORD SET = MARCH 2001

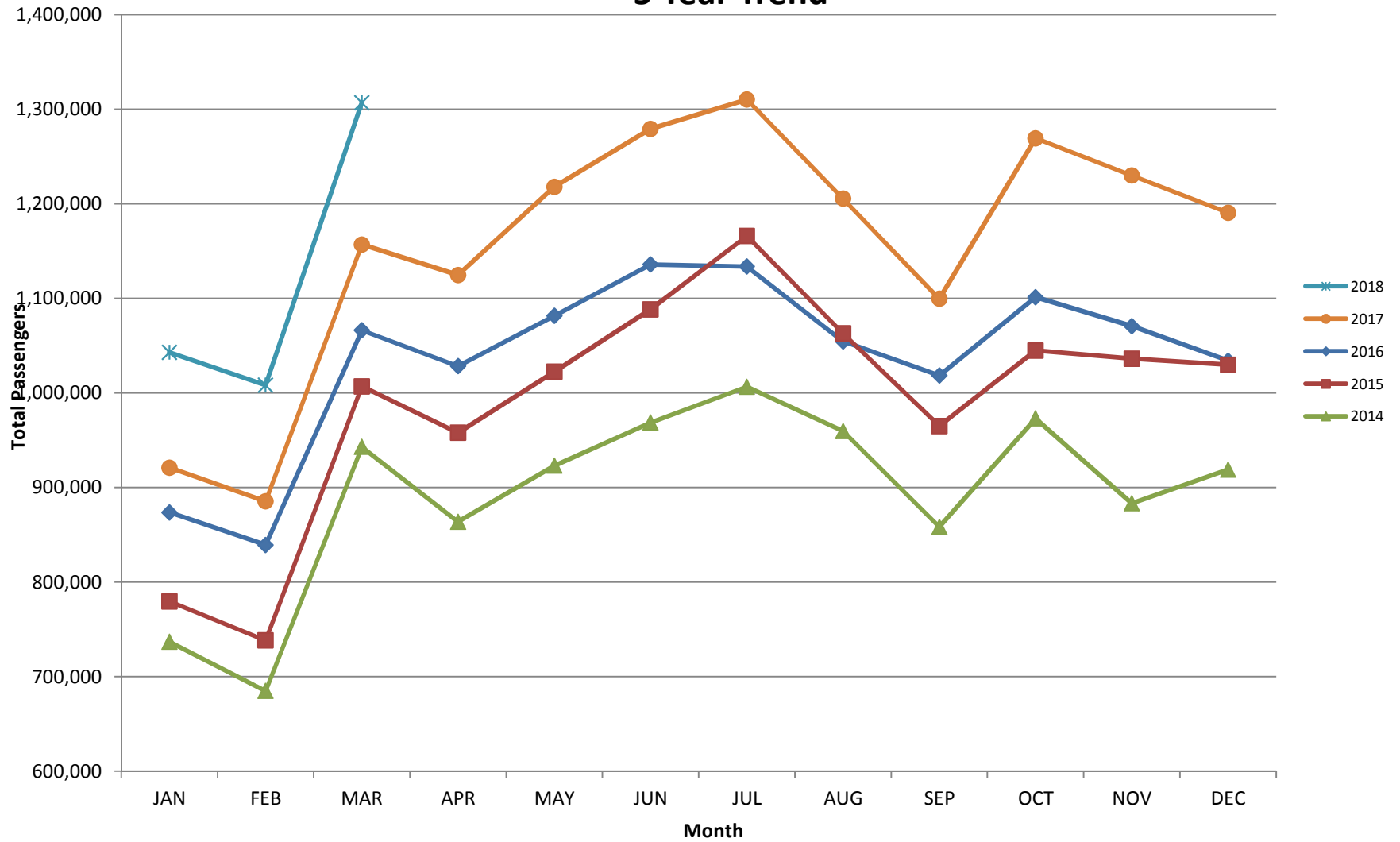
## AUS – Airline Codes

March 2018

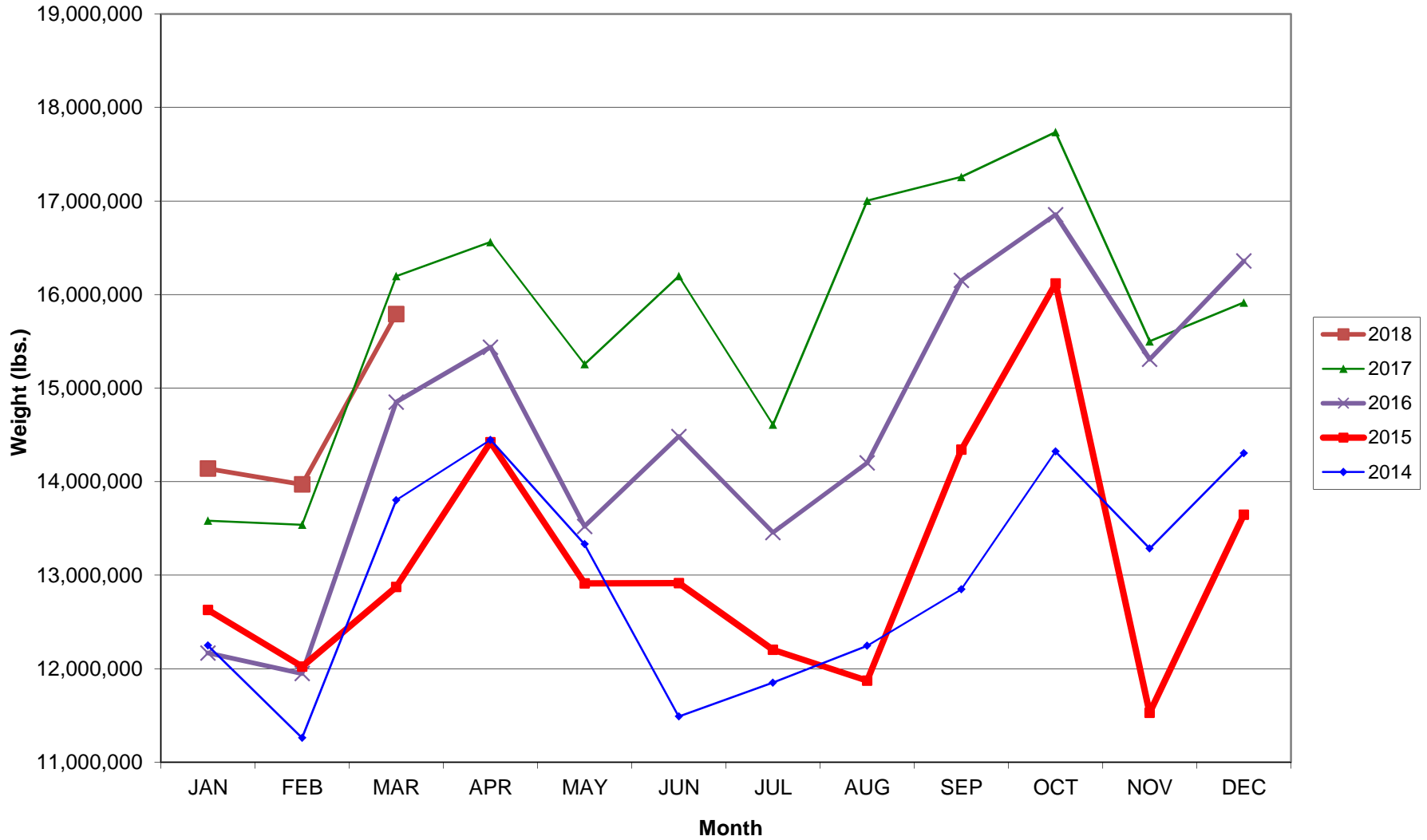
<u>Code</u>	<u>Carrier</u>
AM	Aerovias de Mexico S.A. de C.V. dba AeroMexico Airlines
AC	Air Canada
AS	Alaska Airlines, Inc. (Includes Virgin America. Merger effective 2/1/2018)
G4	Allegiant Air, LLC
AA	American Airlines, Inc.
BA	British Airways Plc
Y4	Concesionaria Vuela Compañía de Aviación, S.A.P.I. de C.V dba Volaris
DL	Delta Airlines
F9	Frontier Airlines
B6	JetBlue Airways Corp.
LL	Miami Air International
DY	Norwegian Air UK, Ltd.
SK	Scandinavian Airlines
WN	Southwest Airlines
SY	Sun Country Airlines/ MN Airlines, LLC
WQ	Swift Air
UA	United Airlines, Inc.
VC	VIA Airlines

# AUSTIN PASSENGER TRAFFIC

## 5 Year Trend

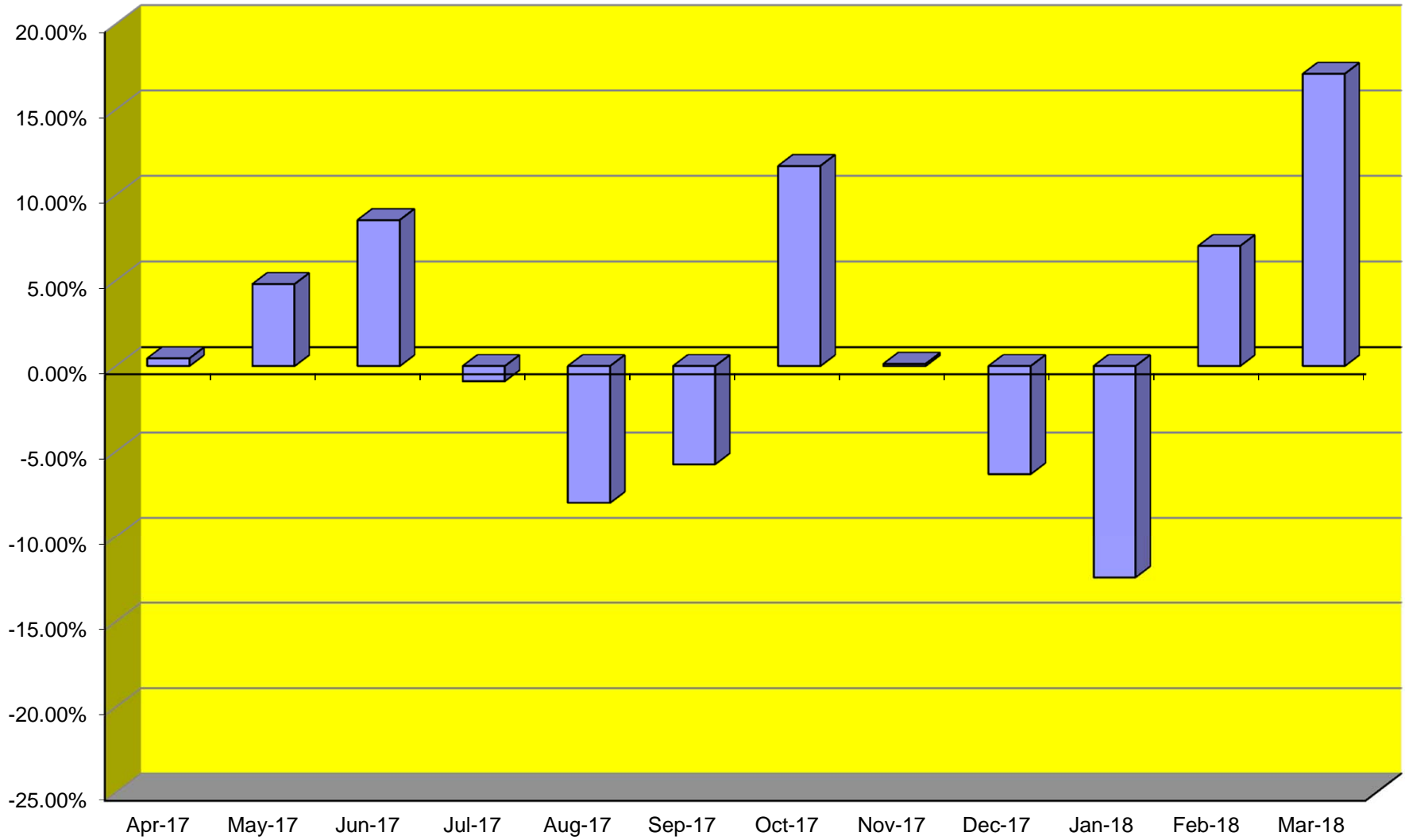


### TOTAL CARGO POUNDAGE - AUSTIN, TEXAS



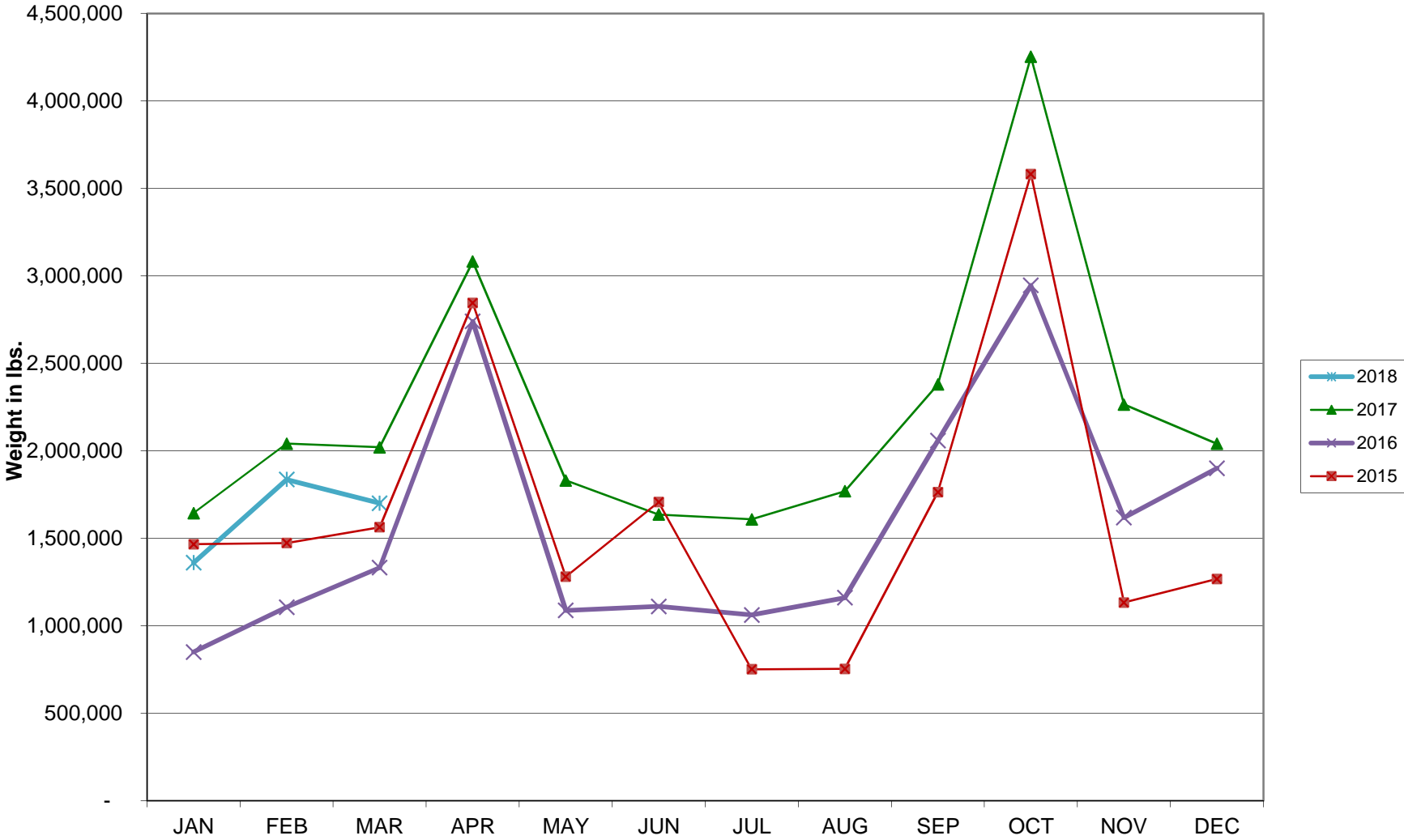


**Monthly % Change in Average Daily Passengers**

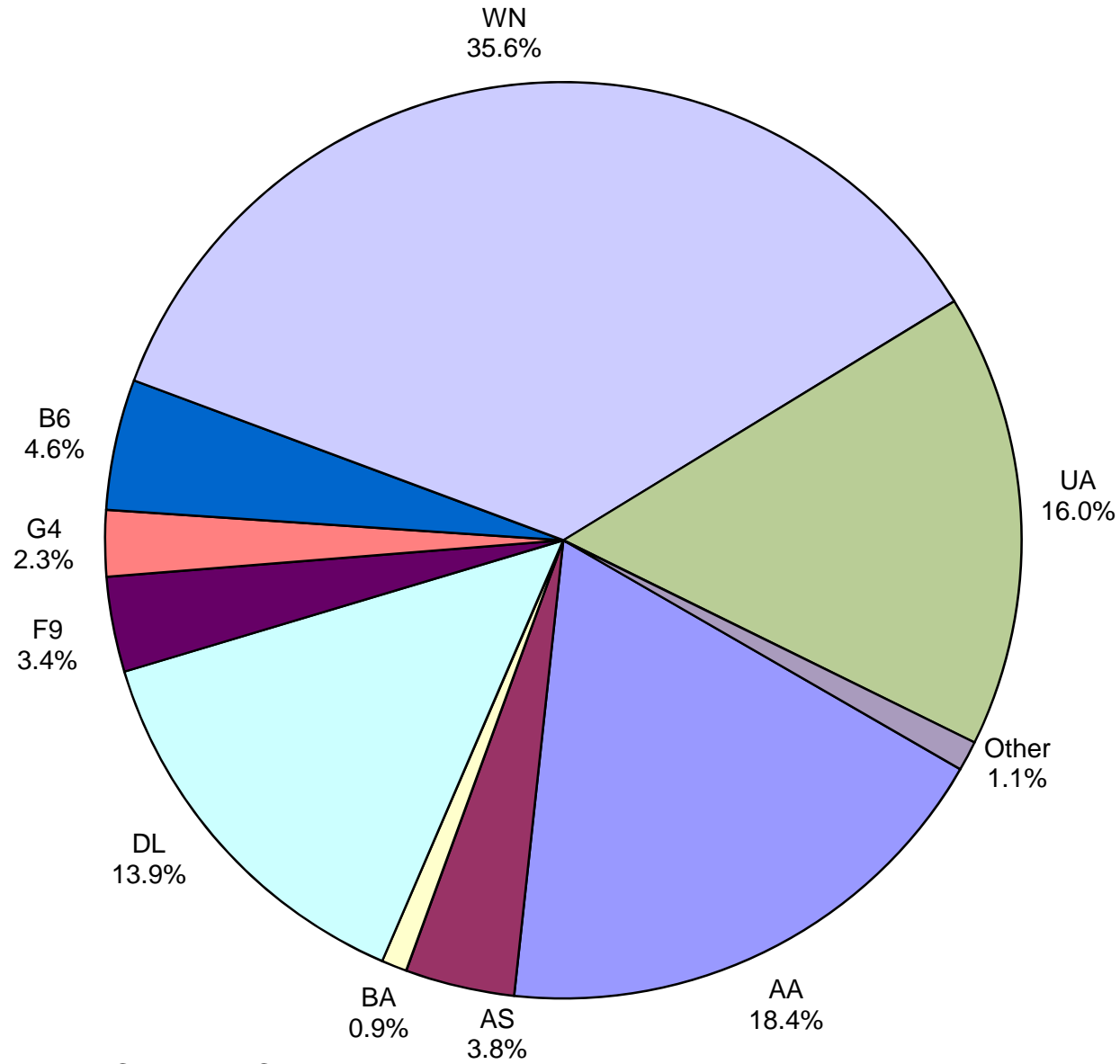




# HISTORY OF INTERNATIONAL AIR CARGO



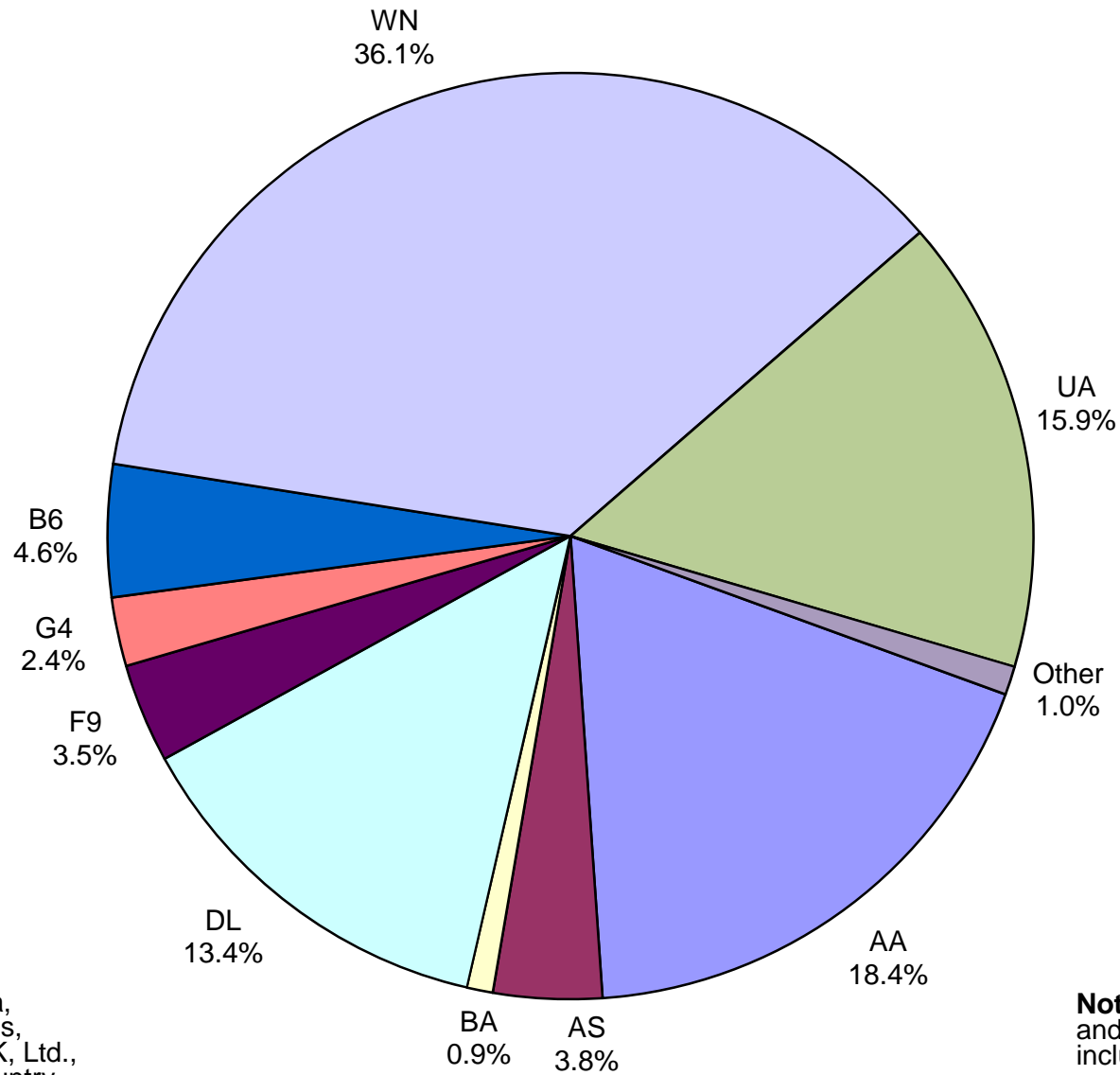
**Total Passengers  
March 2018**



**Other:** Aeromexico, Air Canada LLC, Miami Air Int'l., Norwegian Air UK, Ltd., Scandinavian Airlines, Sun Country, Swift Air, VIA Airlines and Concesionaria Vuela dba Volaris

**Note:** American, Delta and United Airlines percentages include Affiliates.

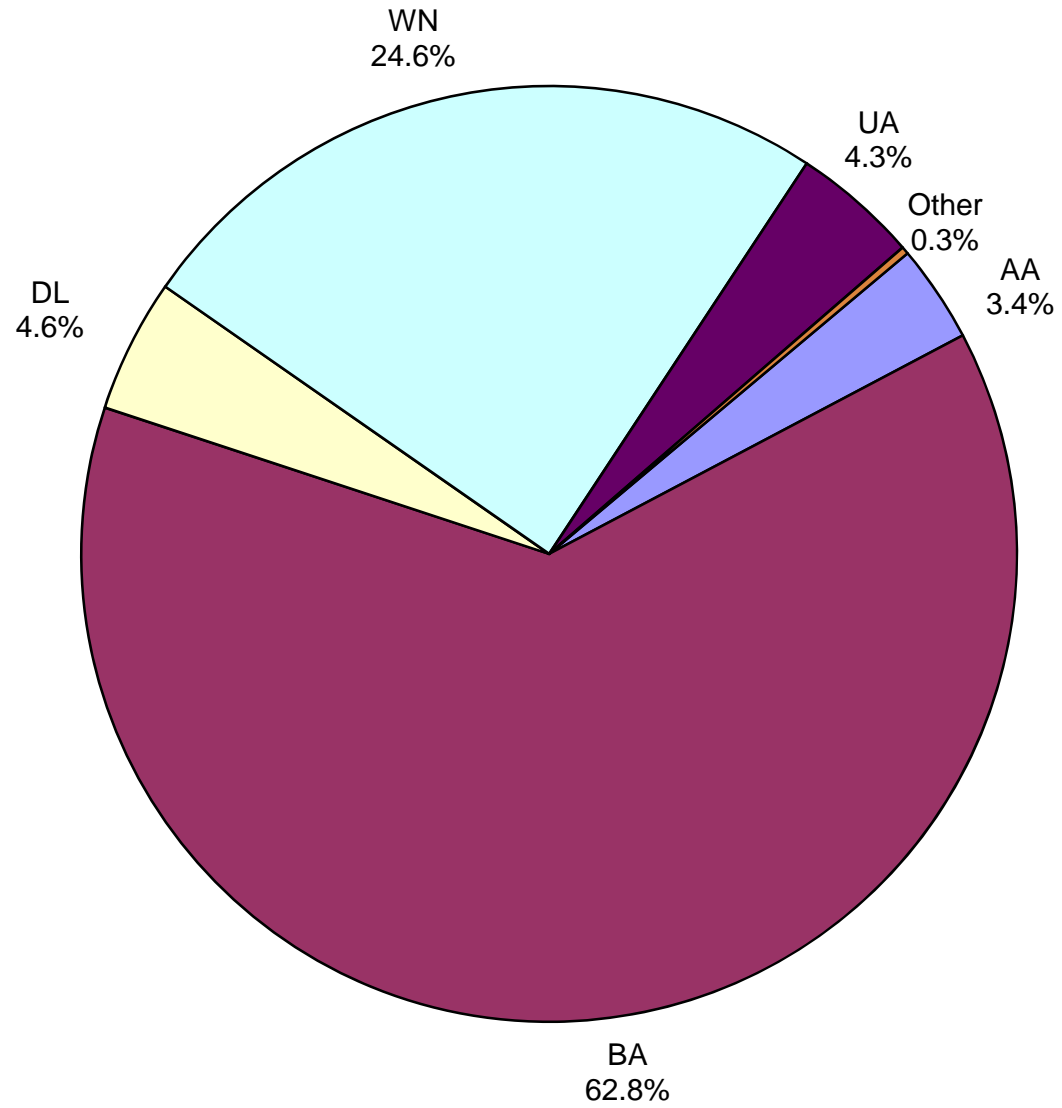
**All Passenger Carriers  
Enplaned Revenue Passengers  
March 2018**



**Other:** Aeromexico, Air Canada, Concesionaria Vuela dba Volaris, Miam Air Int'l, Norwegian Air UK, Ltd., Scandinavian Airlines, Sun Country, Swift Air, LLC and VIA Airlines

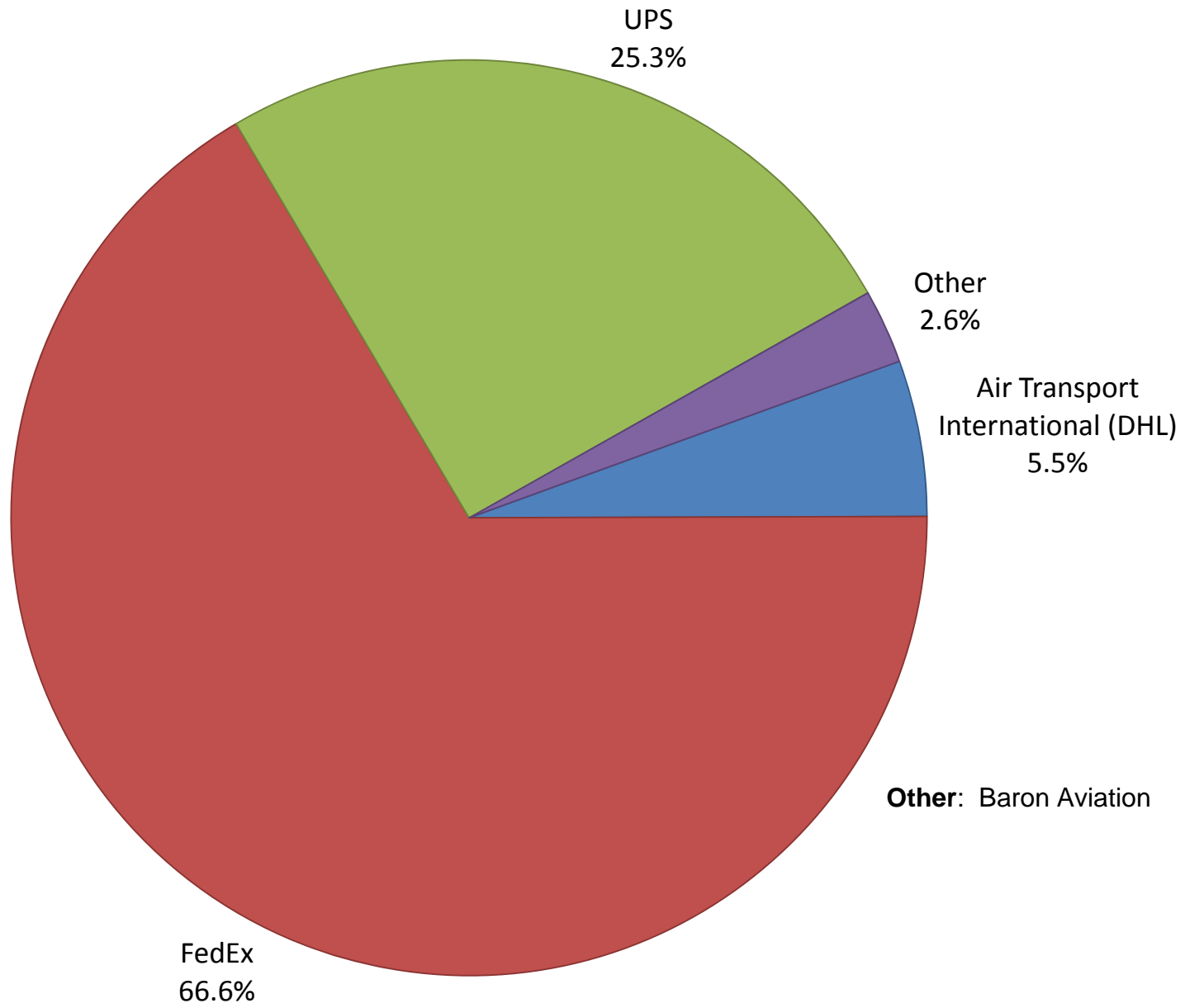
**Note:** American/US Airways, Delta and United Airlines percentages include Affiliates.

**AUS Belly Freight Market Shares  
March 2018**

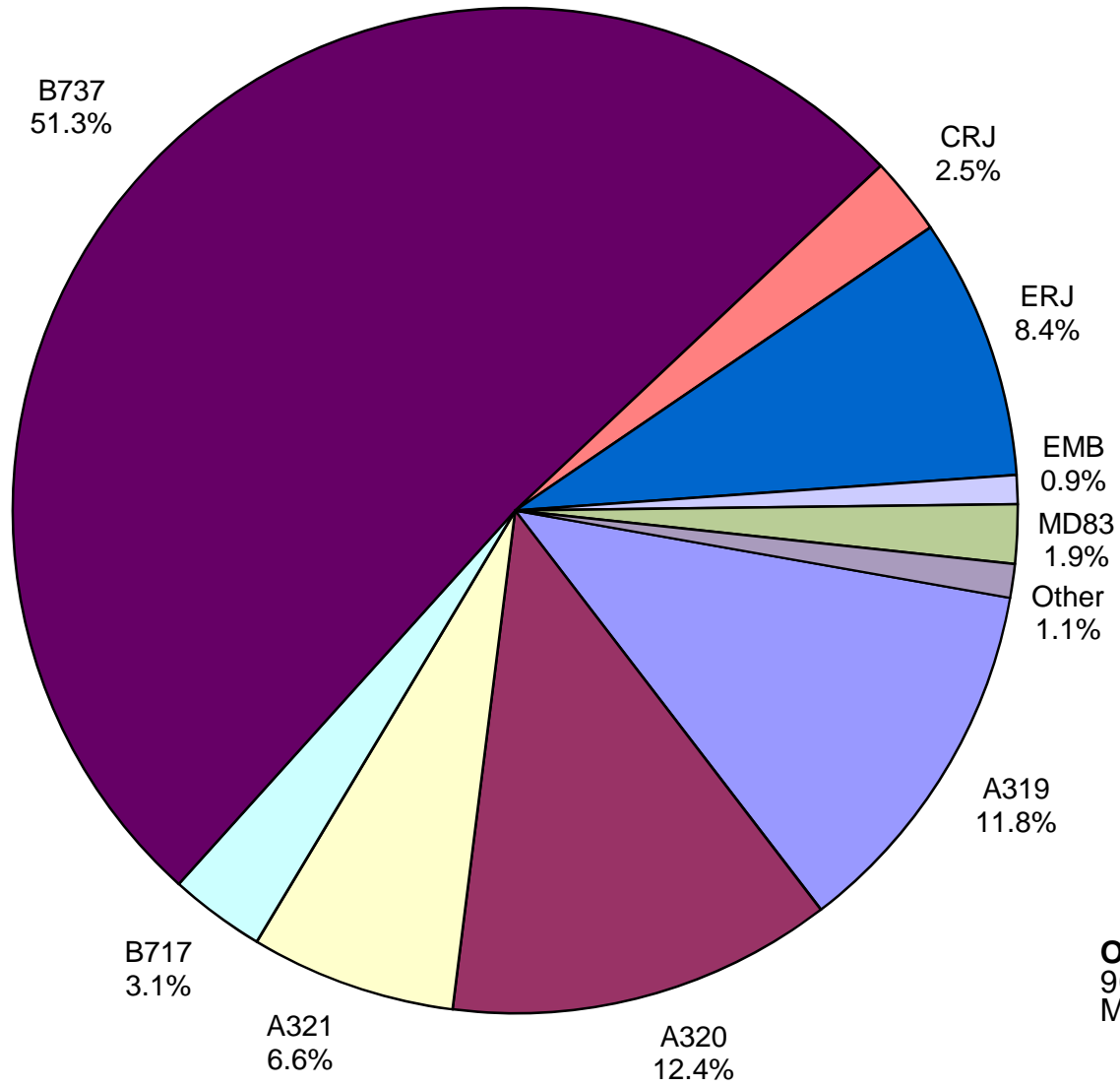


**Other = Alaska Airlines**

# Air Cargo Market Share March 2018

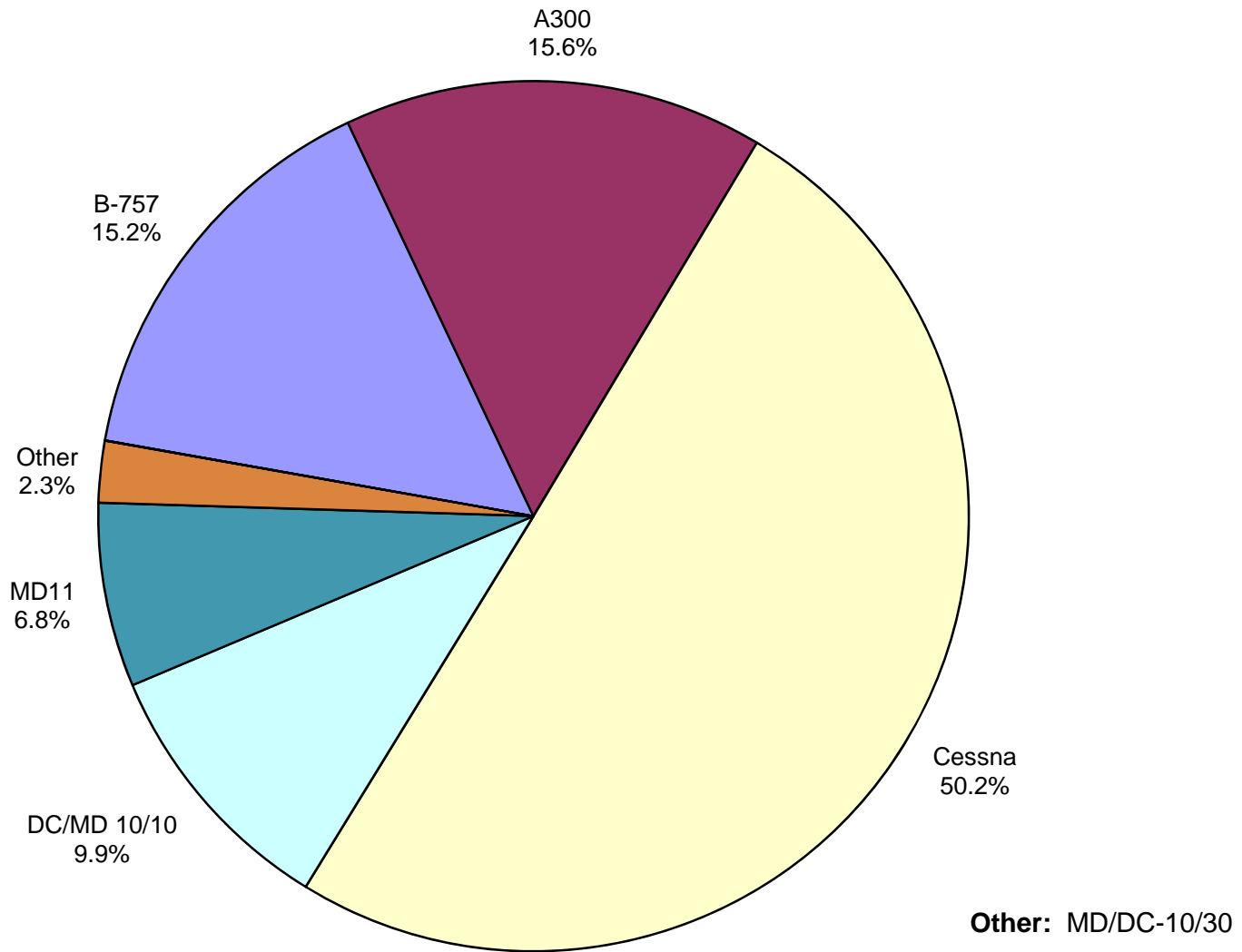


**AUS Scheduled Passenger Aircraft Fleet Mix  
March 2018**



**Other:** B-757, B-767, B-787-900, MD-82, MD-88 and MD-90

**AUS Scheduled Cargo Aircraft Fleet Mix  
March 2018**



# Austin-Bergstrom International Airport

## PAX Detail Report - March, 2018

Company	03/2018	03/2017	Period		YTD 2018	YTD 2017	YTD		2018 Share	2017 Share	Share Diff
			Difference	Change			Difference	Change			
Aerovias de Mexico S.A. de C.V.	3,860	3,269	591	18.1	10,088	8,732	1,356	15.5	0.3	0.3	0.0
Air Canada	4,040	3,005	1,035	34.4	10,431	9,404	1,027	10.9	0.3	0.3	0.0
Alaska Airlines	50,369	21,128	29,241	138.4	120,421	55,654	64,767	116.4	3.6	1.9	1.7
Allegiant Air	30,470	23,736	6,734	28.4	71,971	51,572	20,399	39.6	2.1	1.7	0.4
American Airlines	240,234	222,907	17,327	7.8	633,196	594,890	38,306	6.4	18.9	20.1	-1.2
British Airways	11,734	11,871	-137	-1.2	31,371	29,572	1,799	6.1	0.9	1.0	-0.1
Concesionaria Vuela Compañía de Aviación, S.A.P.I. de C.V.	1,373	1,819	-446	-24.5	3,244	4,857	-1,613	-33.2	0.1	0.2	-0.1
Delta Air Lines	181,683	147,098	34,585	23.5	445,546	362,026	83,520	23.1	13.3	12.2	1.1
Frontier Airlines	43,864	24,450	19,414	79.4	127,680	70,011	57,669	82.4	3.8	2.4	1.4
JetBlue Airways	60,285	61,108	-823	-1.3	146,525	146,111	414	0.3	4.4	4.9	-0.6
Miami Air International	309	0	309	0.0	309	0	309	0.0	0.0	0.0	0.0
Norwegian Air UK LTD	1,719	0	1,719	0.0	1,719	0	1,719	0.0	0.1	0.0	0.1
Scandinavian Airlines	697	0	697	0.0	697	0	697	0.0	0.0	0.0	0.0
Southwest Airlines	465,117	424,426	40,691	9.6	1,237,565	1,124,911	112,654	10.0	36.9	38.0	-1.1
Sun Country Airlines	382	560	-178	-31.8	1,280	1,670	-390	-23.4	0.0	0.1	0.0
Swift Air	293	0	293	0.0	559	136	423	311.0	0.0	0.0	0.0
Texas Sky	0	208	-208	-100.0	0	467	-467	-100.0	0.0	0.0	0.0
United Airlines	209,218	196,614	12,604	6.4	500,795	464,088	36,707	7.9	14.9	15.7	-0.7
VIA Airlines	1,141	0	1,141	0.0	3,160	0	3,160	0.0	0.1	0.0	0.1
Virgin America	0	14,729	-14,729	-100.0	11,117	38,962	-27,845	-71.5	0.3	1.3	-1.0
Xtra Airways/Casino Express	0	0	0	0.0	0	136	-136	-100.0	0.0	0.0	0.0
<b>Report Totals</b>	<b>1,306,788</b>	<b>1,156,928</b>	<b>149,860</b>	<b>13.0%</b>	<b>3,357,674</b>	<b>2,963,199</b>	<b>394,475</b>	<b>13.3%</b>			

### Statistics Included in Report:

Domestic Passengers:	Enplaned Revenue, Deplaned Revenue, Enplaned Non-Revenue, Deplaned Non-Revenue
International Passengers:	Enplaned Revenue, Deplaned Revenue, Enplaned Non-Revenue, Deplaned Non-Revenue
International Pre-Cleared Passengers:	Enplaned Revenue, Deplaned Revenue, Enplaned Non-Revenue, Deplaned Non-Revenue
South Terminal Domestic Passengers:	Enplaned Revenue, Deplaned Revenue, Enplaned Non-Revenue, Deplaned Non-Revenue



# Austin-Bergstrom International Airport

## Summary Landing Report

### Landing Type: Total

Month	2018		2017		2016		% Change 2018 - 2017		% Change 2017 - 2016	
	Count	Weight	Count	Weight	Count	Weight	Count	Weight	Count	Weight
January	5,086	688,923,110	4,768	612,688,871	4,622	560,718,408	6.67%	12.44%	3.16%	9.27%
February	4,706	637,500,756	4,357	552,711,639	4,387	527,452,920	8.01%	15.34%	-0.68%	4.79%
March	5,643	760,648,260	5,307	685,661,659	5,151	639,655,137	6.33%	10.94%	3.03%	7.19%
April			5,179	689,402,051	4,892	614,643,711			5.87%	12.16%
May			5,529	736,484,083	5,096	630,853,941			8.50%	16.74%
June			5,603	752,628,599	5,179	651,537,449			8.19%	15.52%
July			5,698	763,088,836	5,233	663,015,597			8.89%	15.09%
August			5,490	741,110,019	5,181	660,099,361			5.96%	12.27%
September			5,046	679,381,339	4,738	623,397,035			6.50%	8.98%
October			5,448	743,973,610	4,923	649,182,343			10.66%	14.60%
November			5,289	718,179,948	4,775	624,303,554			10.76%	15.04%
December			5,442	737,424,963	4,893	629,611,090			11.22%	17.12%
<b>Totals for Selected Period</b>	15,435	2,087,072,126	14,432	1,851,062,169	14,160	1,727,826,465	6.95%	12.75%	1.92%	7.13%
<b>Yearly Totals</b>	15,435	2,087,072,126	63,156	8,412,735,617	59,070	7,474,470,546			6.92%	12.55%