

Austin-Bergstrom International Airport

Aviation Activity Report

Calendar Year 2012 vs 2011

	09/2012	09/2011	Percent Change	01/2012 - 09/2012	01/2011 - 09/2011	Percent Change
<u>Passenger Activity</u>						
Domestic Enplaned Revenue	348,692	353,908	-1.47	3,408,691	3,295,723	3.43
Domestic Deplaned Revenue	349,176	351,092	-0.55	3,416,907	3,294,811	3.71
International Enplaned Revenue	653	0	0.00	8,722	4,546	91.86
International Deplaned Revenue	1,036	0	0.00	9,496	4,553	108.57
Domestic Enplaned Non-Revenue	9,097	8,988	1.21	89,076	92,657	-3.86
Domestic Deplaned Non-Revenue	8,558	8,107	5.56	81,952	85,815	-4.50
International Enplaned Non-Revenue	0	0	0.00	0	34	-100.00
International Deplaned Non-Revenue	0	0	0.00	12	31	-61.29
South Terminal-Intl Enplaned Revenue	0	0	0.00	0	0	0.00
South Terminal-Intl Deplaned Revenue	0	0	0.00	0	0	0.00
South Terminal-Intl Enplaned Non-Revenue	0	0	0.00	0	0	0.00
South Terminal-Intl Deplaned Non-Revenue	0	0	0.00	0	0	0.00
Passenger Totals	717,212	722,095	-0.68	7,014,856	6,778,170	3.49

CURRENT PASSENGER RECORD = 869,308

RECORD SET = JUNE 2008

Aircraft Operations

Air Carrier	7,980	7,719	3.38	73,156	71,553	2.24
Commuter & Air Taxi	1,177	1,526	-22.87	11,569	13,498	-14.29
Military	626	643	-2.64	4,433	5,355	-17.22
General Aviation						
Itinerant	3,938	4,430	-11.11	36,581	41,293	-11.41
Local	172	136	26.47	1,560	2,451	-36.35
Total G.A.	4,110	4,566	-9.99	38,141	43,744	-12.81
Total Operations	13,893	14,454	-3.88	127,299	134,150	-5.11

Austin-Bergstrom International Airport

Aviation Activity Report

Calendar Year 2012 vs 2011

	09/2012	09/2011	Percent Change	01/2012 - 09/2012	01/2011 - 09/2011	Percent Change
<u>Cargo Activity</u>						
Mail						
Domestic Enplaned Mail	93,352	78,212	19.36	742,470	1,063,787	-30.21
Domestic Deplaned Mail	214,459	182,952	17.22	1,581,761	2,184,271	-27.58
International Enplaned Mail	0	0	0.00	0	0	0.00
International Deplaned Mail	0	0	0.00	0	0	0.00
South Terminal-Intl Enplaned Mail	0	0	0.00	0	0	0.00
South Terminal-Intl Deplaned Mail	0	0	0.00	0	0	0.00
Mail Totals	307,811	261,164	17.86	2,324,231	3,248,058	-28.44
Cargo						
Domestic Enplaned Cargo	5,013,571	5,208,703	-3.75	46,219,554	46,842,727	-1.33
Domestic Deplaned Cargo	5,416,251	5,601,189	-3.30	50,490,920	47,265,650	6.82
International Enplaned Cargo	426,211	457,141	-6.77	3,478,951	3,897,569	-10.74
International Deplaned Cargo	381,276	490,481	-22.26	3,249,423	3,682,987	-11.77
South Terminal-Intl Enplaned Cargo	0	0	0.00	0	0	0.00
South Terminal-Intl Deplaned Cargo	0	0	0.00	0	0	0.00
Cargo Totals	11,237,309	11,757,514	-4.42	103,438,848	101,688,933	1.72
Belly Freight						
Domestic Enplaned Belly Freight	512,582	440,920	16.25	5,024,058	4,101,969	22.48
Domestic Deplaned Belly Freight	341,168	409,619	-16.71	4,033,748	4,351,696	-7.31
International Enplaned Belly Freight	0	0	0.00	0	0	0.00
International Deplaned Belly Freight	0	0	0.00	0	0	0.00
South Terminal-Intl Enplaned Belly Frt	0	0	0.00	0	0	0.00
South Terminal-Intl Deplaned Belly Frt	0	0	0.00	0	0	0.00
Belly Freight Totals	853,750	850,539	0.38	9,057,806	8,453,665	7.15
Cargo Totals (Mail, Cargo, Belly Freight)	12,398,870	12,869,217	-3.65	114,820,885	113,390,656	1.26

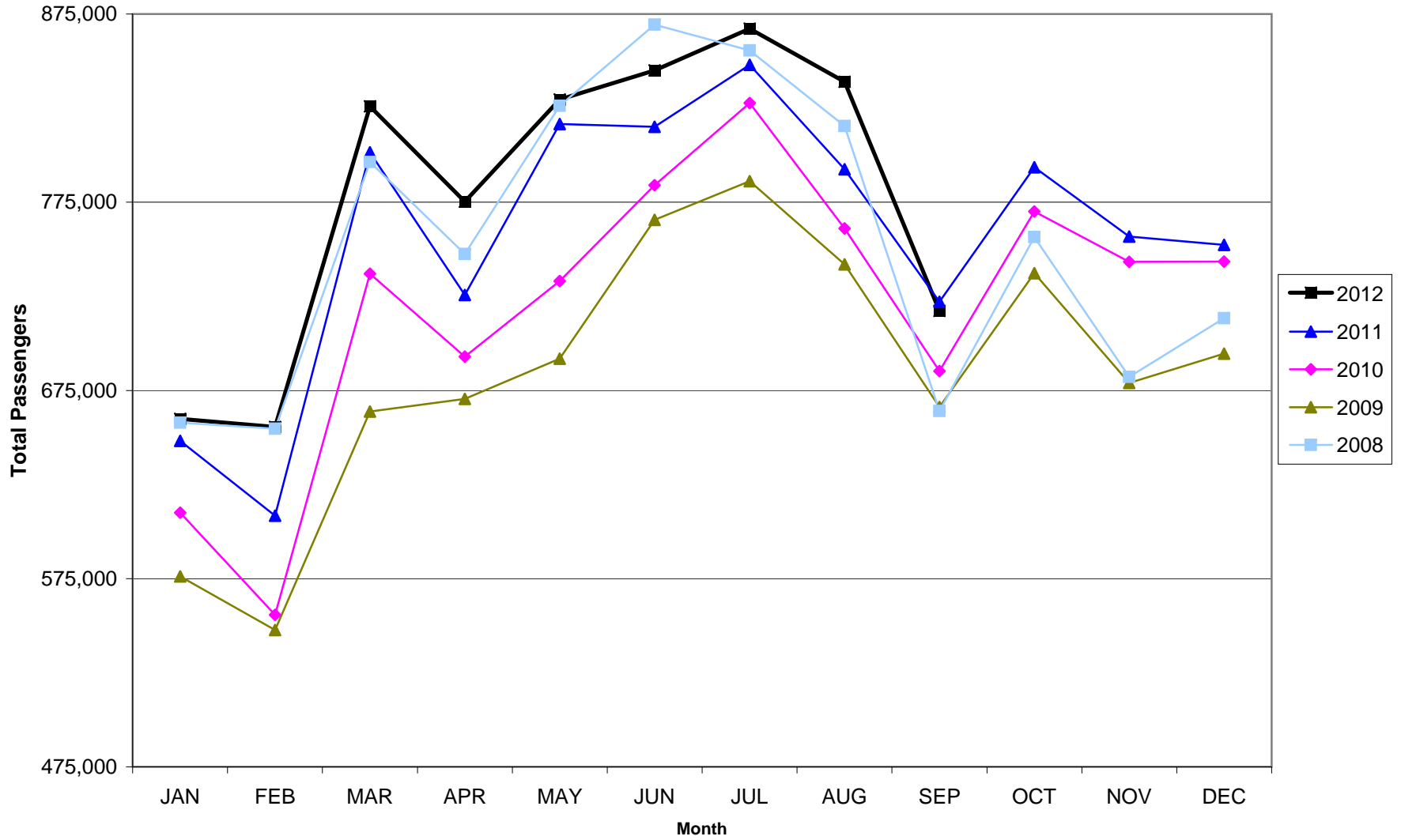
CURRENT CARGO RECORD = 40,215,518

RECORD SET = MARCH 2001

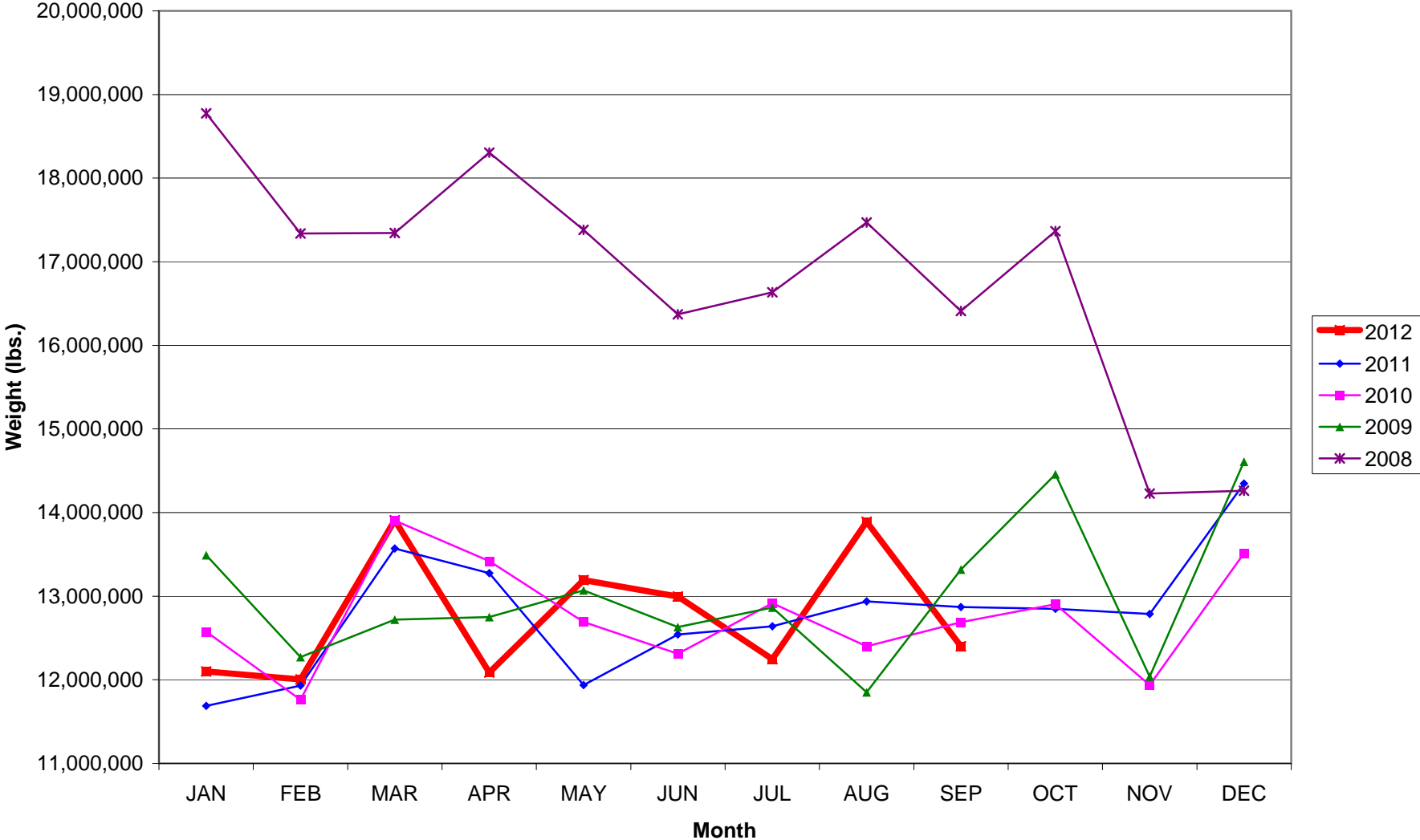
AUS – Airline Codes
September 2012

<u>Code</u>	<u>Carrier</u>
AS	Alaska Airlines, Inc.
AA	American Airlines, Inc. Post-Petition (DIP)
CO	Continental Airlines
DL	Delta Airlines
XE	Express Jet Airlines, Inc. (UA Express)
F9	Frontier Airlines
G7	GoJet Airlines dba United Express
B6	JetBlue Airways Corp.
YV	Mesa Airlines Inc – DIP (US Airways & UA Express)
S5	Shuttle America Corp. (UA Express)
OO	Sky West Airlines, Inc. (UA Express)
WN	Southwest Airlines
UA	United Airlines, Inc.
US	US Airways Group, Inc.
V2	Vision Airlines, Inc.

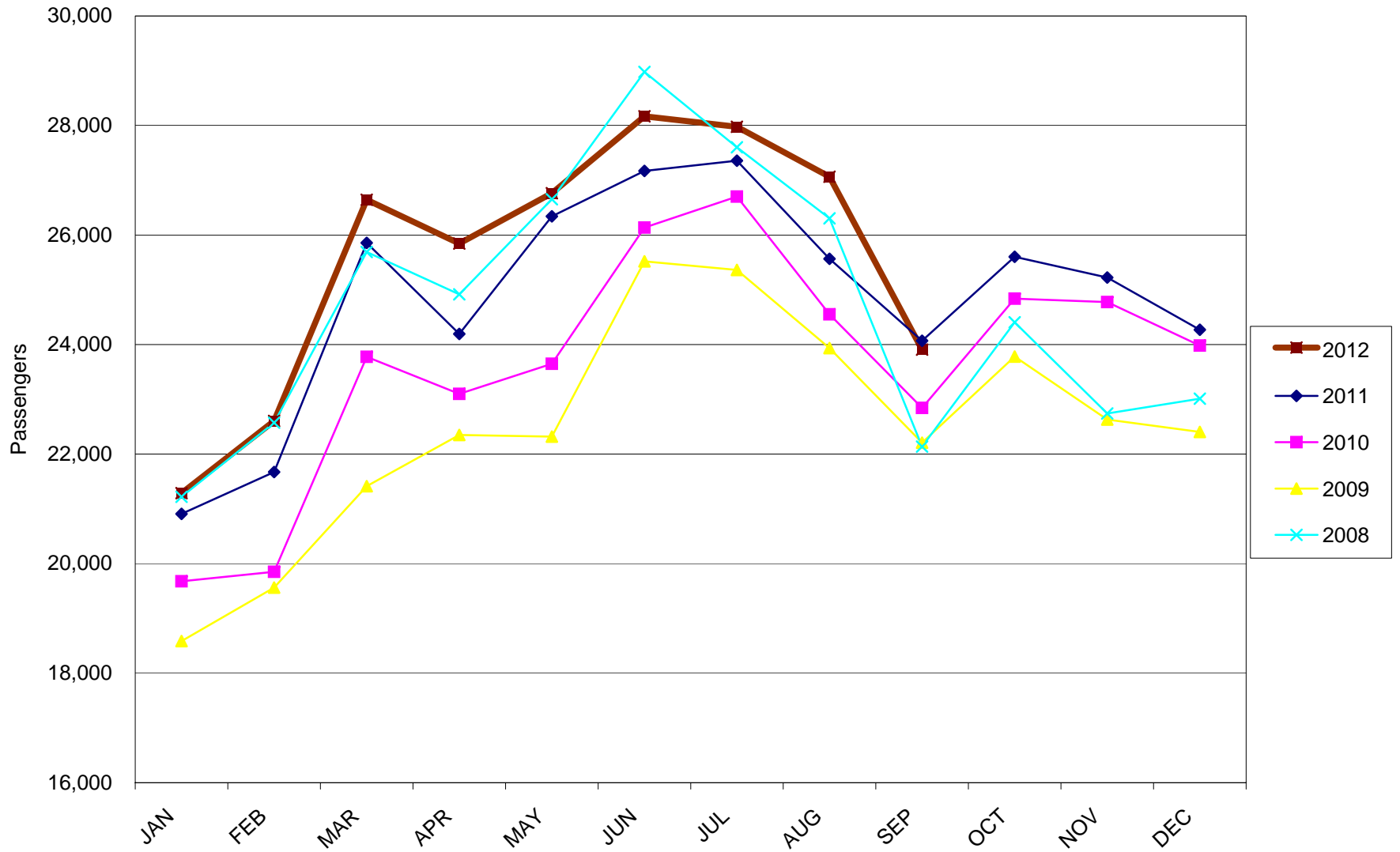
AUSTIN PASSENGER TRAFFIC
Calendar Year 2012 vs 2011



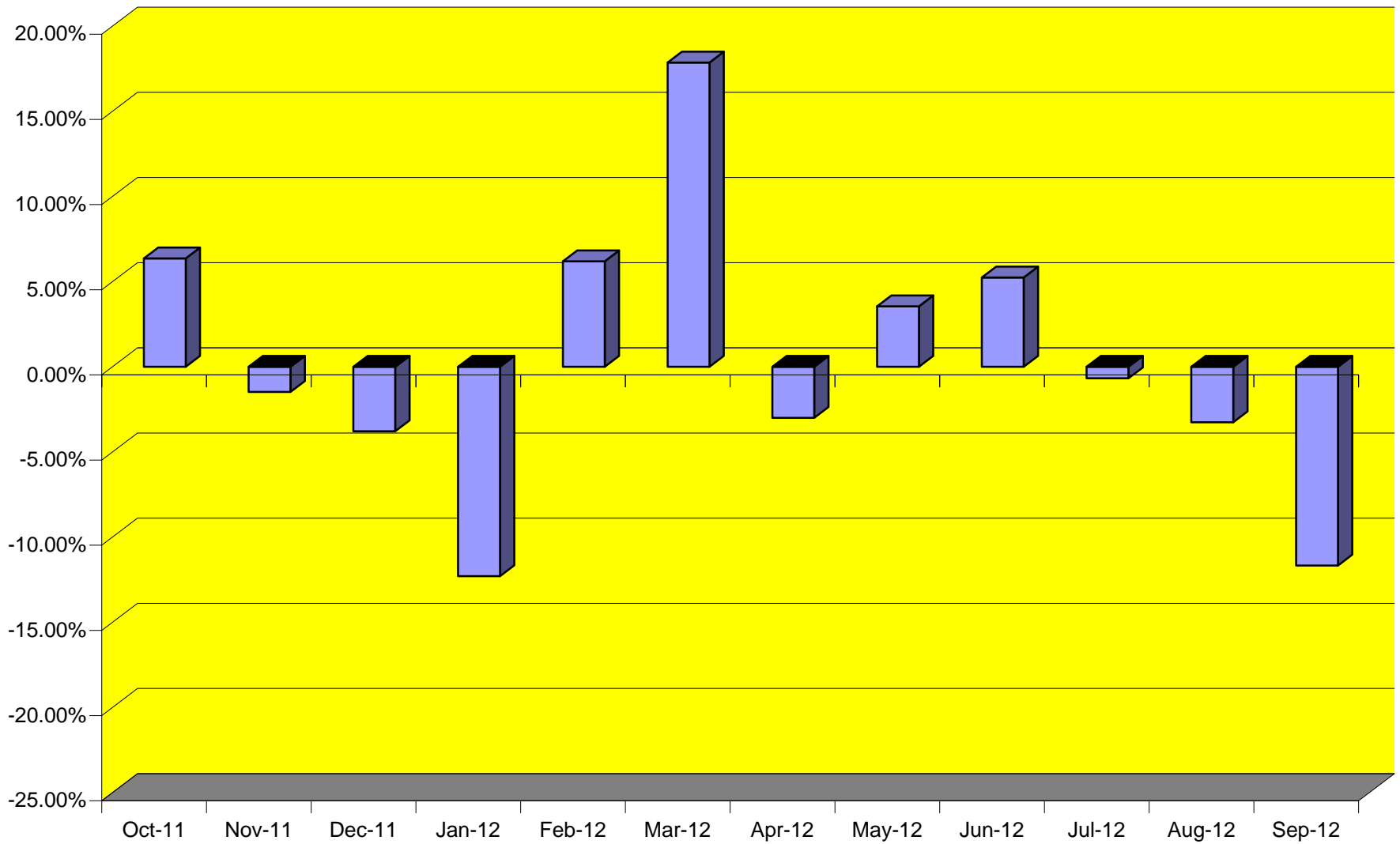
TOTAL CARGO POUNDAGE - AUSTIN, TEXAS



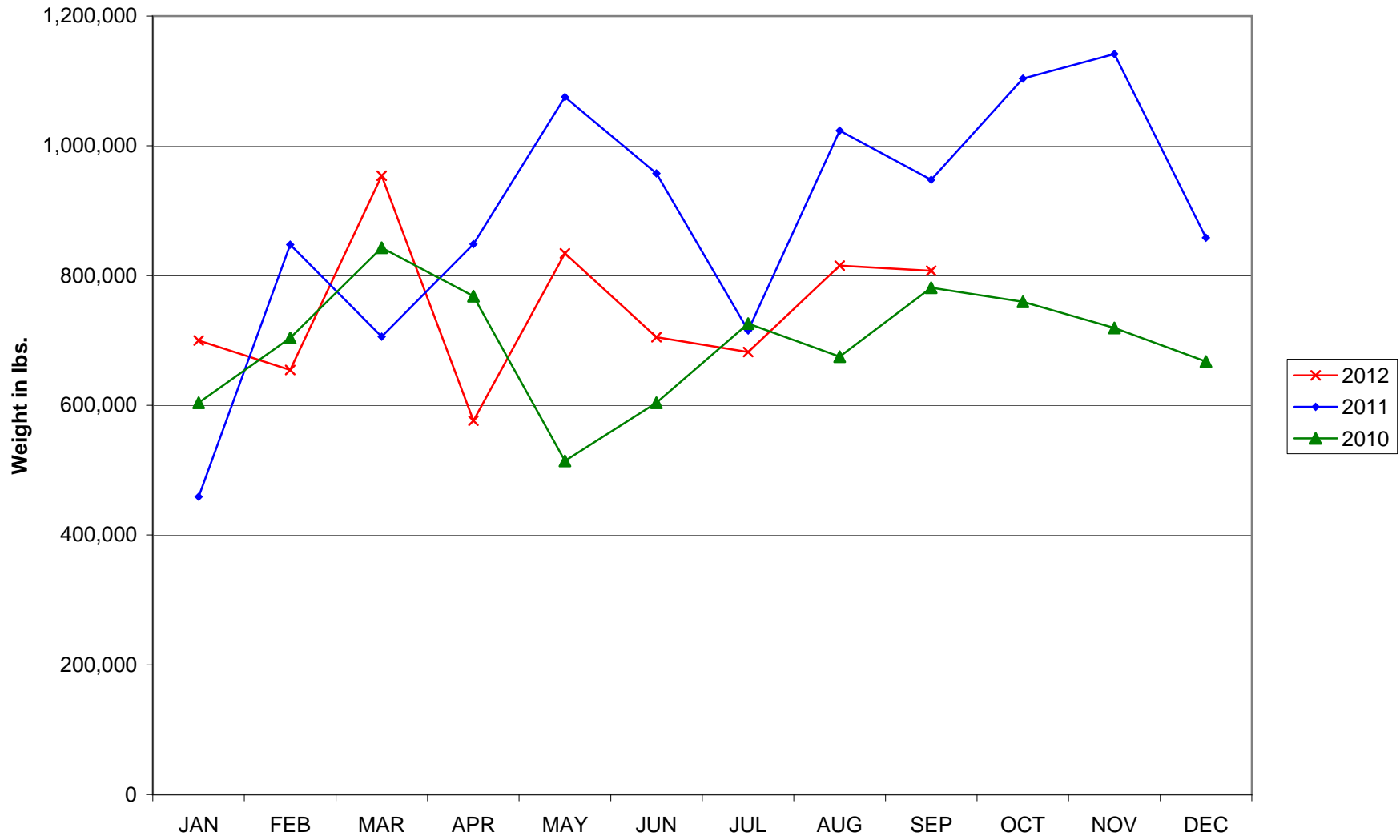
Average Daily Passengers



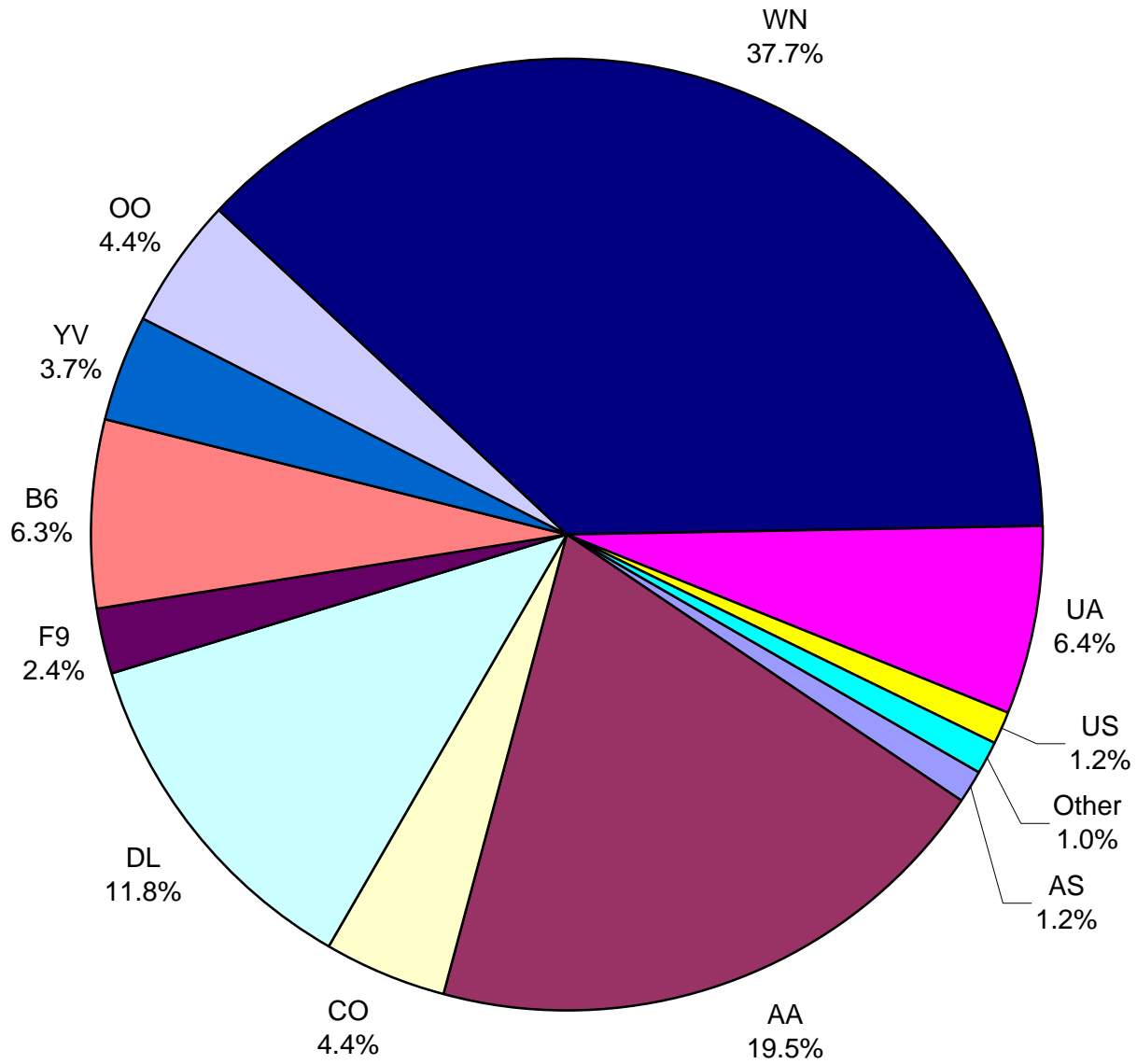
Monthly % Change in Average Daily Passengers



History of International Air Cargo



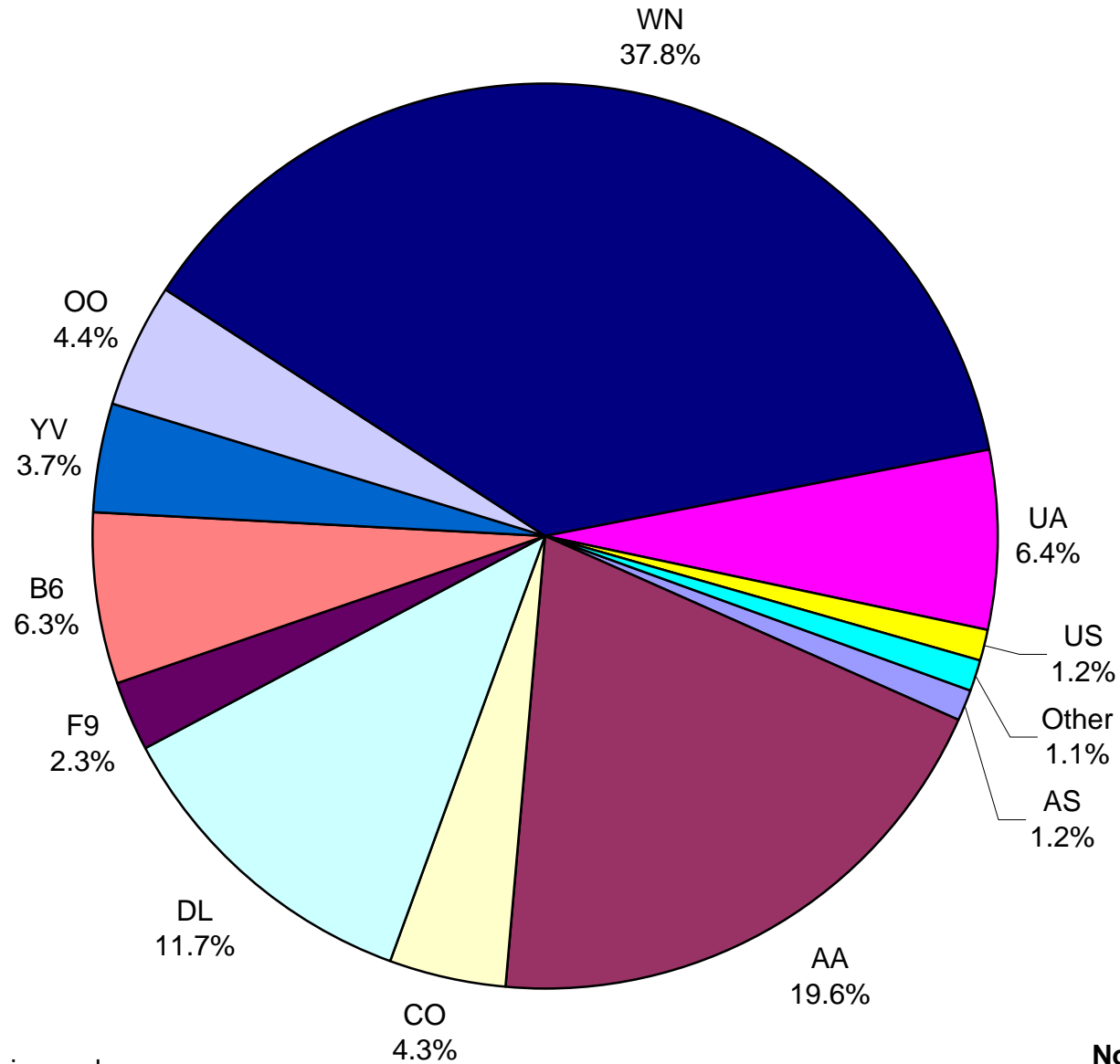
**Total Passengers
September 2012**



Other = ExpressJet, Shuttle America and Vision Airlines

Note: United Airlines percentage includes sub-contractors.

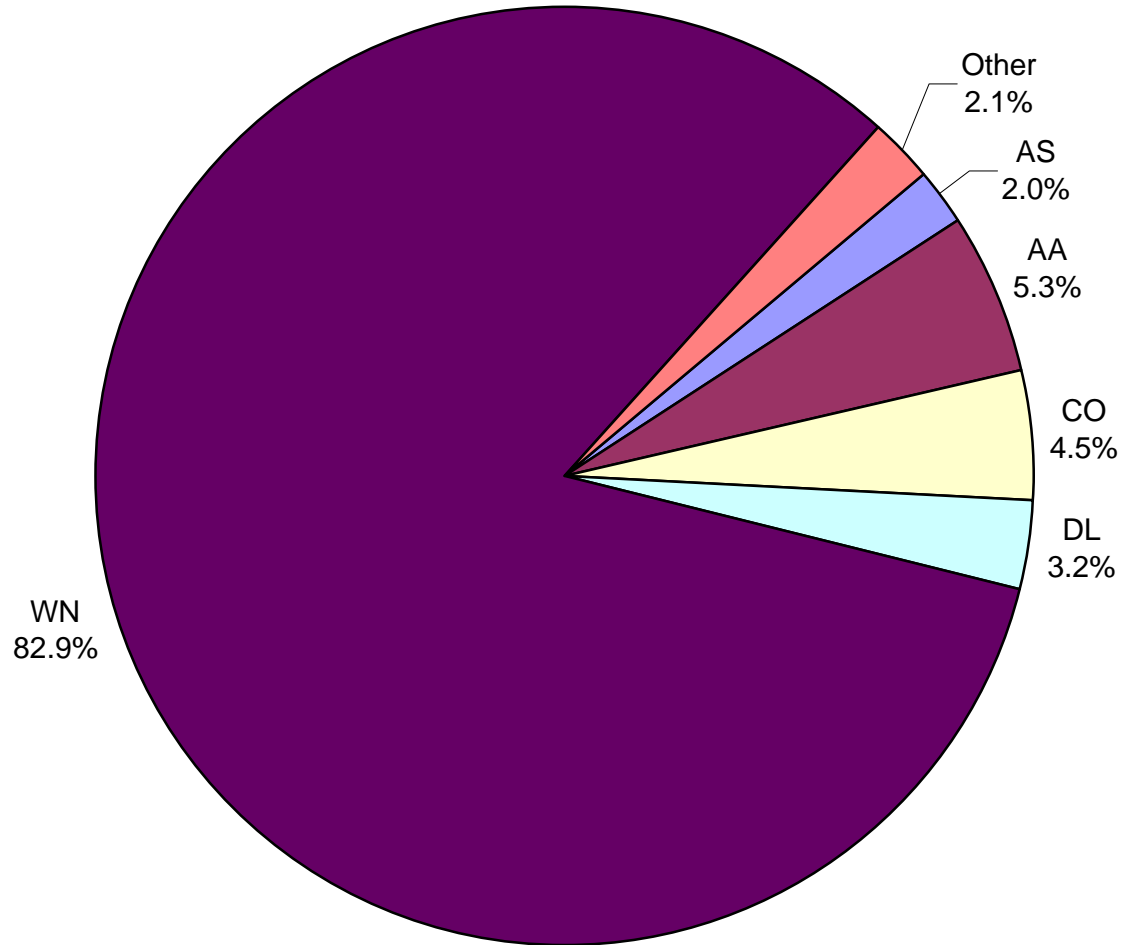
**All Passenger Carriers
Enplaned Revenue Passengers
September 2012**



Other = ExpressJet, Shuttle America and Vision Airlines

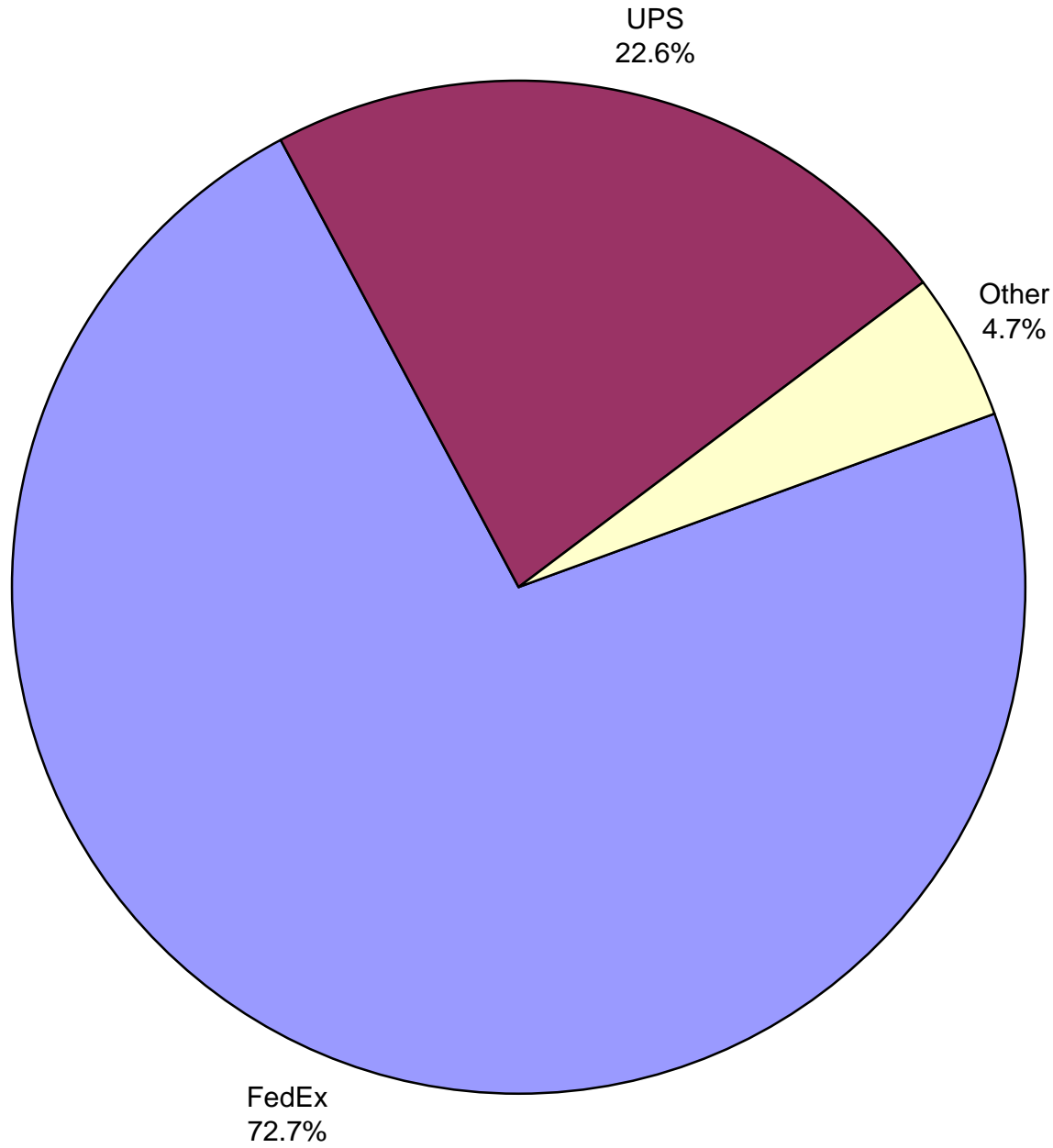
Note: United Airlines percentage includes sub-contractors.

AUS Belly Freight Market Shares September 2012



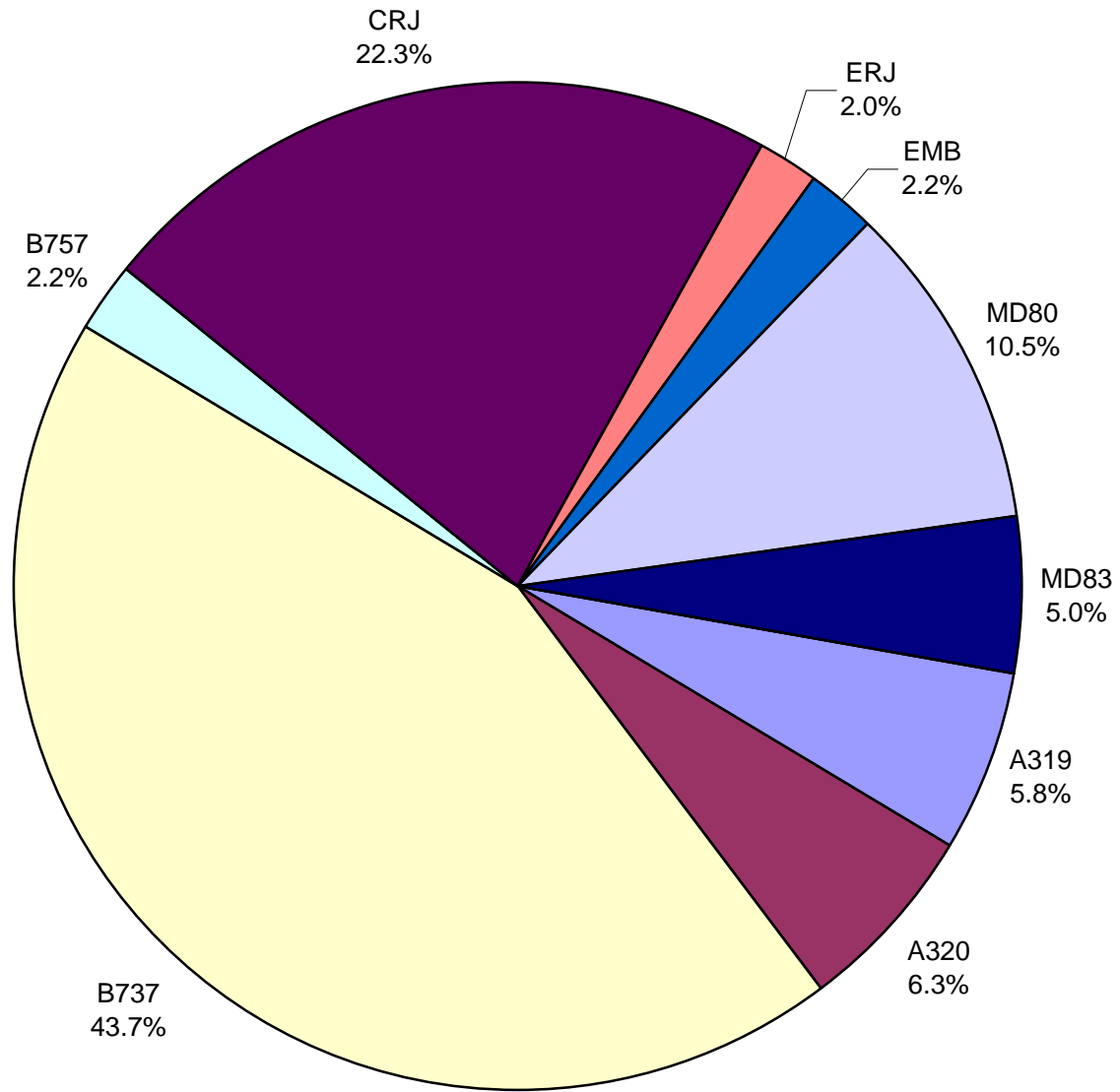
Other = Express Jet Airlines, Frontier Airlines, JetBlue Airways, Mesa Airlines, United Airlines and US Airways

**Air Cargo Market Shares
September 2012**



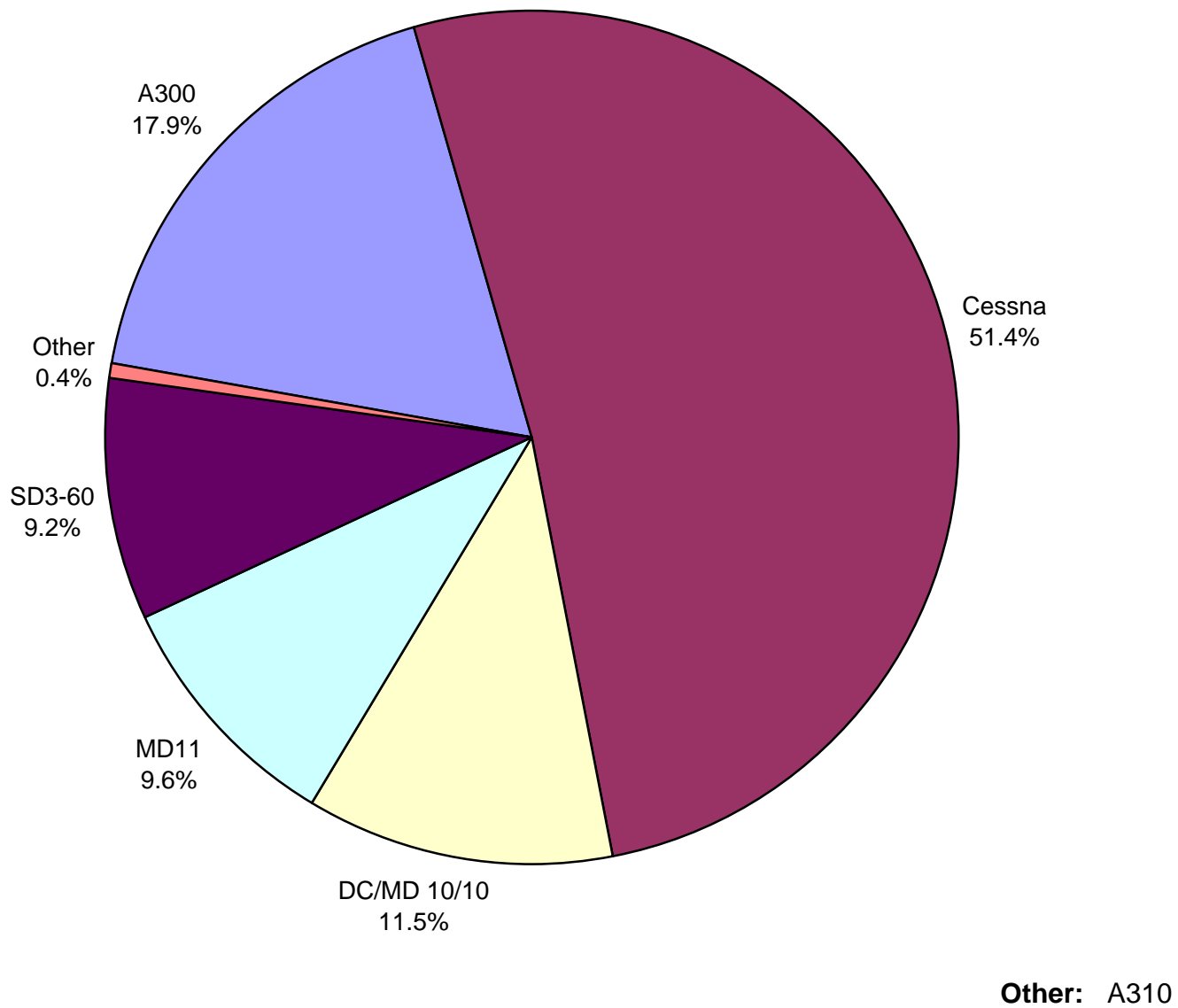
Other: Air Cargo Carriers
and Baron Aviation

**AUS Scheduled Passenger Aircraft Fleet Mix
September 2012**



Other: N/A

**AUS Scheduled Cargo Aircraft Fleet Mix
September 2012**



Austin-Bergstrom International Airport

PAX Detail Report - September, 2012

Company	09/2012	09/2011	Period		YTD 2012	YTD 2011	YTD		2012 Share	2011 Share	Share Diff
			Difference	Change			Difference	Change			
Alaska Airlines, Inc.	8,703	9,340	-637	-6.8	85,154	126,406	-41,252	-32.6	1.2	1.9	-0.7
Allegiant Air	0	636	-636	-100.0	2,090	2,925	-835	-28.5	0.0	0.0	0.0
American Airlines, Inc - Pre-Petition	0	160,214	-160,214	-100.0	0	1,393,318	-1,393,318	-100.0	0.0	20.6	-20.6
American Airlines, Inc. - Post-Petition (DIP)	140,085	0	140,085	0.0	1,410,229	0	1,410,229	0.0	20.1	0.0	20.1
Ameristarjet Charter Inc.	0	0	0	0.0	2	0	2	0.0	0.0	0.0	0.0
Casino Express Airways	0	0	0	0.0	0	345	-345	-100.0	0.0	0.0	0.0
Continental Airlines	31,358	48,145	-16,787	-34.9	525,553	627,073	-101,520	-16.2	7.5	9.3	-1.8
Delta Air Lines	84,538	86,423	-1,885	-2.2	847,151	779,303	67,848	8.7	12.1	11.5	0.6
Express Jet Airlines, Inc.	1,920	843	1,077	127.8	29,208	29,771	-563	-1.9	0.4	0.4	0.0
Frontier Airlines, Inc.	17,054	22,174	-5,120	-23.1	152,215	184,997	-32,782	-17.7	2.2	2.7	-0.6
GoJet Airlines d/b/a United Express	13,116	9,266	3,850	41.5	110,949	110,104	845	0.8	1.6	1.6	0.0
JetBlue Airways Corporation	44,940	47,765	-2,825	-5.9	435,375	405,098	30,277	7.5	6.2	6.0	0.2
Mesa Airlines Inc - DIP	26,722	30,359	-3,637	-12.0	288,814	307,865	-19,051	-6.2	4.1	4.5	-0.4
Shuttle America Corporation	5,202	6,889	-1,687	-24.5	35,866	27,669	8,197	29.6	0.5	0.4	0.1
SkyWest Airlines, Inc	31,691	31,058	633	2.0	295,367	212,353	83,014	39.1	4.2	3.1	1.1
Southwest Airlines	270,284	263,835	6,449	2.4	2,659,096	2,481,392	177,704	7.2	37.9	36.6	1.3
Sun Country Airlines/ MN Airlines, LLC	0	0	0	0.0	346	3,966	-3,620	-91.3	0.0	0.1	-0.1
United Airlines, Inc.	32,919	5,027	27,892	554.8	127,751	84,052	43,699	52.0	1.8	1.2	0.6
US Airways Group, Inc.	8,438	0	8,438	0.0	8,438	245	8,193	3,344.1	0.1	0.0	0.1
US Marshall Service / JPATS	0	0	0	0.0	1	0	1	0.0	0.0	0.0	0.0
Vision Airlines, Inc.	242	121	121	100.0	1,251	1,288	-37	-2.9	0.0	0.0	0.0
Report Totals	717,212	722,095	-4,883	-0.7%	7,014,856	6,778,170	236,686	3.5%			

Statistics Included in Report:

Domestic Passengers:

International Passengers:

Enplaned Revenue, Deplaned Revenue, Enplaned Non-Revenue, Deplaned Non-Revenue

Enplaned Revenue, Deplaned Revenue, Enplaned Non-Revenue, Deplaned Non-Revenue, South Terminal-Intl Enplaned Revenue, South Terminal-Intl Deplaned Revenue, South Terminal-Intl Enplaned Non-Revenue, South Terminal-Intl Deplaned Non-Revenue.

Austin-Bergstrom International Airport

Summary Landing Report

Landing Type: Total

Month	2012		2011		2010		% Change 2012 - 2011		% Change 2011 - 2010	
	Count	Weight	Count	Weight	Count	Weight	Count	Weight	Count	Weight
January	4,033	441,029,354	4,214	463,934,037	4,067	445,767,645	-4.30%	-4.94%	3.61%	4.08%
February	3,892	432,535,353	3,776	417,430,253	3,630	393,369,172	3.07%	3.62%	4.02%	6.12%
March	4,372	496,635,886	4,539	498,238,970	4,244	463,954,520	-3.68%	-0.32%	6.95%	7.39%
April	4,260	479,535,174	4,274	479,035,366	4,102	451,246,077	-0.33%	0.10%	4.19%	6.16%
May	4,385	509,470,460	4,564	500,806,412	4,196	469,770,550	-3.92%	1.73%	8.77%	6.61%
June	4,425	503,932,220	4,378	490,983,485	4,307	476,579,536	1.07%	2.64%	1.65%	3.02%
July	4,586	524,142,423	4,499	504,634,624	4,486	495,298,076	1.93%	3.87%	0.29%	1.89%
August	4,532	519,056,485	4,415	499,285,697	4,424	489,257,495	2.65%	3.96%	-0.20%	2.05%
September	4,181	484,324,879	4,226	477,495,780	4,170	469,754,555	-1.06%	1.43%	1.34%	1.65%
October			4,309	490,427,499	4,294	481,126,231			0.35%	1.93%
November			4,078	460,449,178	4,168	463,039,099			-2.16%	-0.56%
December			4,234	473,997,984	4,347	483,287,895			-2.60%	-1.92%
Totals for Selected Period	38,666	4,390,662,234	38,885	4,331,844,624	37,626	4,154,997,626	-0.56%	1.36%	3.35%	4.26%
Yearly Totals	38,666	4,390,662,234	51,506	5,756,719,285	50,435	5,582,450,851			2.12%	3.12%