

Austin-Bergstrom International Airport

Aviation Activity Report

Calendar Year 2014 vs 2013

	12/2014	12/2013	Percent Change	01/2014 - 12/2014	01/2013 - 12/2013	Percent Change
<u>Passenger Activity</u>						
Domestic Enplaned Revenue	447,016	424,442	5.32	5,167,811	4,861,821	6.29
Domestic Deplaned Revenue	432,289	409,161	5.65	5,141,475	4,870,154	5.57
International Enplaned Revenue	9,468	3,089	206.51	80,925	26,199	208.89
International Deplaned Revenue	9,022	2,977	203.06	80,954	28,660	182.46
Domestic Enplaned Non-Revenue	10,664	8,872	20.20	127,284	122,474	3.93
Domestic Deplaned Non-Revenue	10,114	8,350	21.13	118,415	108,235	9.41
International Enplaned Non-Revenue	126	42	200.00	1,018	171	495.32
International Deplaned Non-Revenue Revenue	115	24	379.17	972	244	298.36
Passenger Totals	918,814	856,957	7.22	10,718,854	10,017,958	7.00

CURRENT PASSENGER RECORD = 1,006,417 RECORD SET = JULY 2014

Aircraft Operations

Air Carrier	9,192	8,543	7.60	105,187	101,901	3.22
Commuter & Air Taxi	1,349	1,491	-9.52	17,009	17,343	-1.93
Military	420	453	-7.28	7,061	6,069	16.35
General Aviation						
Itinerant	3,728	3,359	10.99	50,725	48,962	3.60
Local	196	144	36.11	2,486	2,372	4.81
Total G.A.	3,924	3,503	12.02	53,211	51,334	3.66
Total Operations	14,885	13,990	6.40	182,468	176,647	3.30

Austin-Bergstrom International Airport

Aviation Activity Report

Calendar Year 2014 vs 2013

	12/2014	12/2013	Percent Change	01/2014 - 12/2014	01/2013 - 12/2013	Percent Change
<u>Cargo Activity</u>						
Mail						
Domestic Enplaned Mail	160,941	182,436	-11.78	1,554,622	1,440,787	7.90
Domestic Deplaned Mail	231,422	199,902	15.77	2,077,481	2,046,960	1.49
International Enplaned Mail	0	0	0.00	1,103,232	0	0.00
International Deplaned Mail	0	0	0.00	0	2,404	-100.00
Mail Totals	392,363	382,338	2.62	4,735,335	3,490,151	35.68
Cargo						
Domestic Enplaned Cargo	5,444,762	4,787,200	13.75	59,677,171	61,821,801	-3.47
Domestic Deplaned Cargo	6,170,401	6,954,663	-11.29	64,290,521	72,018,931	-10.73
International Enplaned Cargo	371,958	435,752	-14.64	5,683,633	6,528,627	-12.94
International Deplaned Cargo	186,183	369,221	-49.57	4,131,679	6,217,253	-33.54
Cargo Totals	12,173,304	12,546,836	-2.98	133,783,004	146,586,612	-8.73
Belly Freight						
Domestic Enplaned Belly Freight	260,655	237,517	9.74	2,720,902	3,338,071	-18.49
Domestic Deplaned Belly Freight	464,044	421,600	10.07	5,042,207	5,138,368	-1.87
International Enplaned Belly Freight	333,991	0	0.00	4,641,222	0	0.00
International Deplaned Belly Freight	680,418	0	0.00	4,517,824	0	0.00
Belly Freight Totals	1,739,108	659,117	163.85	16,922,155	8,476,439	99.64
Cargo Totals (Mail, Cargo, Belly Freight)	14,304,775	13,588,291	5.27	155,440,494	158,553,202	-1.96

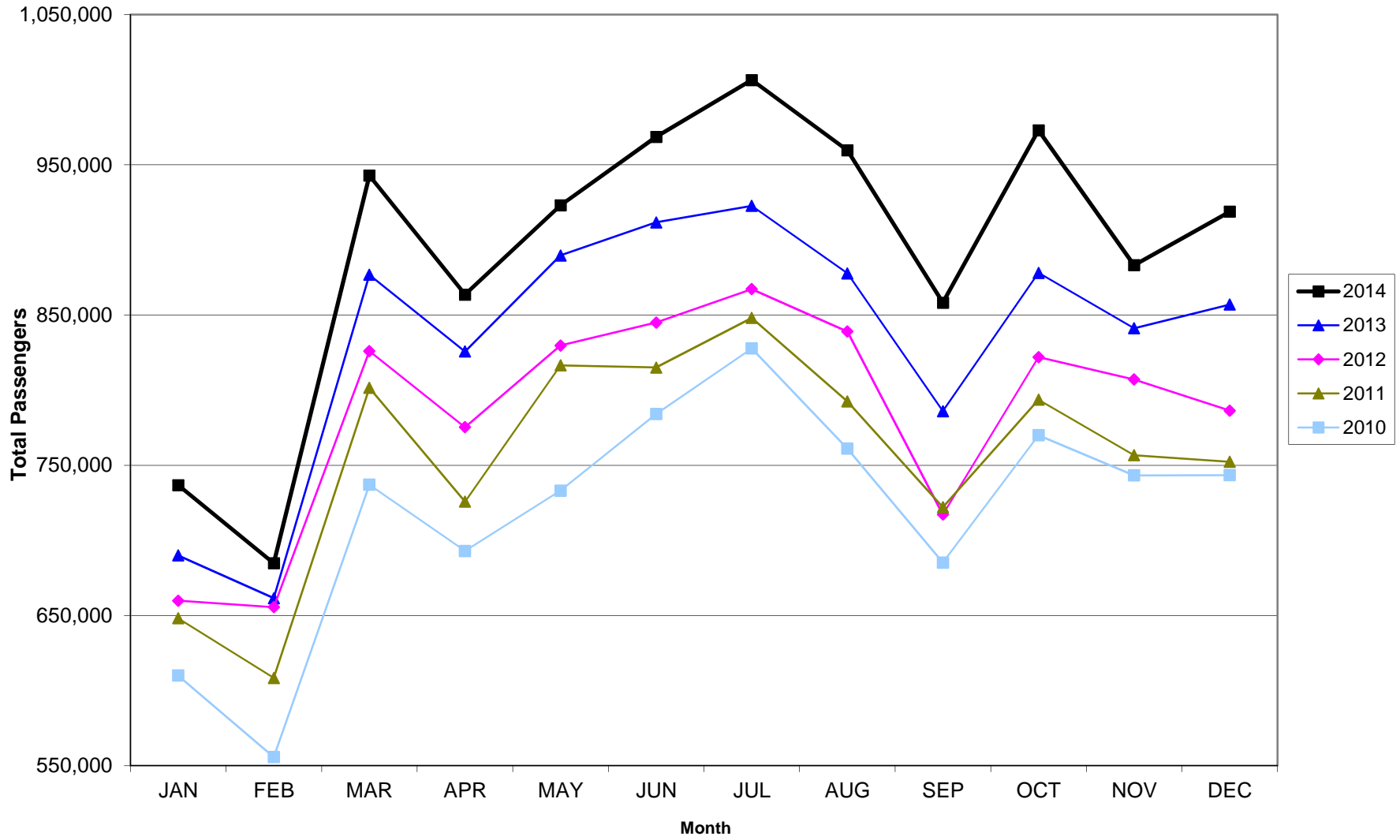
CURRENT CARGO RECORD = 40,215,518

RECORD SET = MARCH 2001

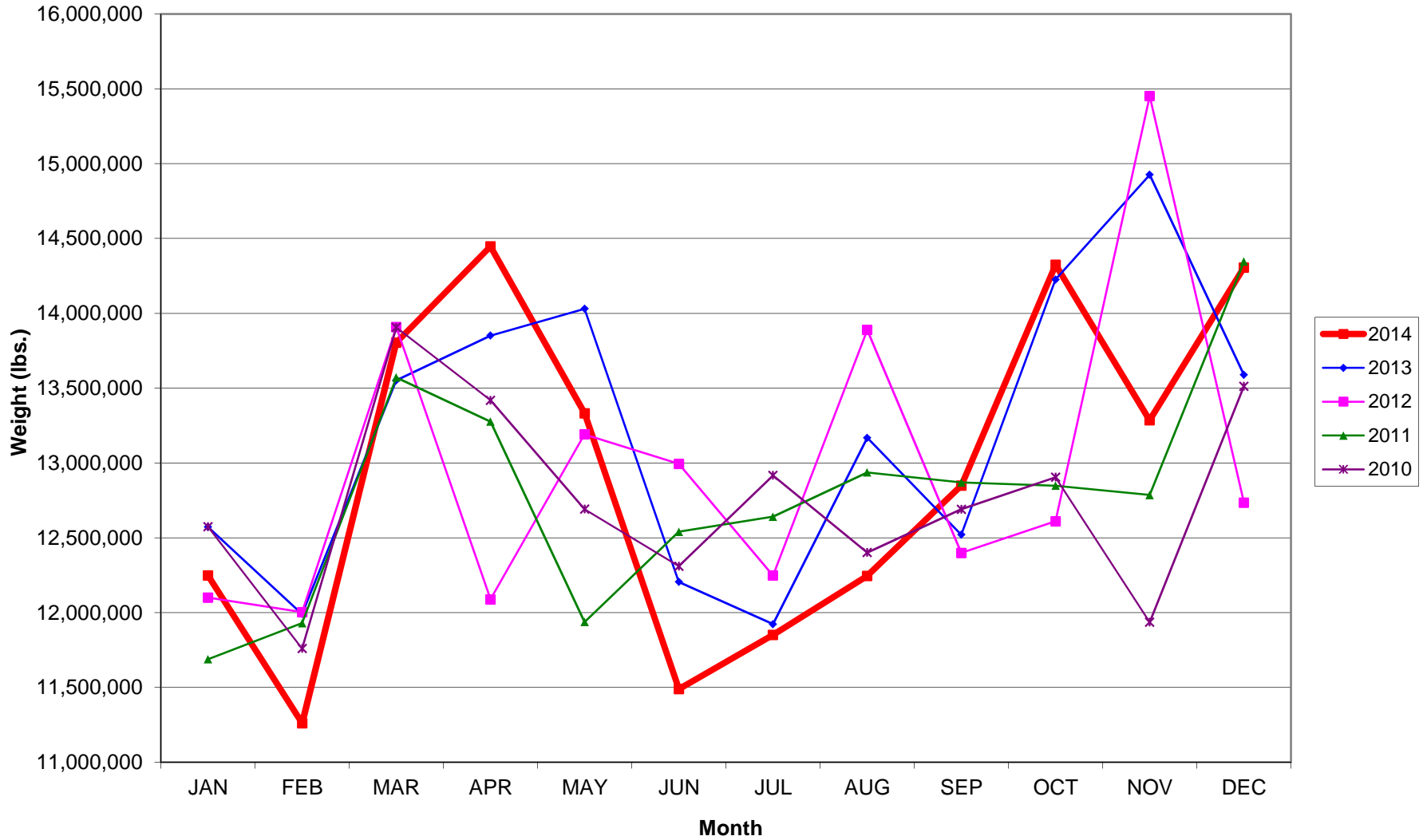
AUS – Airline Codes
December 2014

<u>Code</u>	<u>Carrier</u>
AS	Alaska Airlines, Inc.
G4	Allegiant Air, LLC
AA	American Airlines, Inc.
BA	British Airways Plc
DL	Delta Airlines
F9	Frontier Airlines
B6	JetBlue Airways Corp.
P1	Public Charters, Inc. dba Texas Sky
RW	Republic Airlines, Inc.
WN	Southwest Airlines
SY	Sun Country Airlines/ MN Airlines, LLC
VW	Transportes Aeromar S.A. de C.V.
UA	United Airlines, Inc.
US	US Airways Group, Inc.
VX	Virgin America Inc.

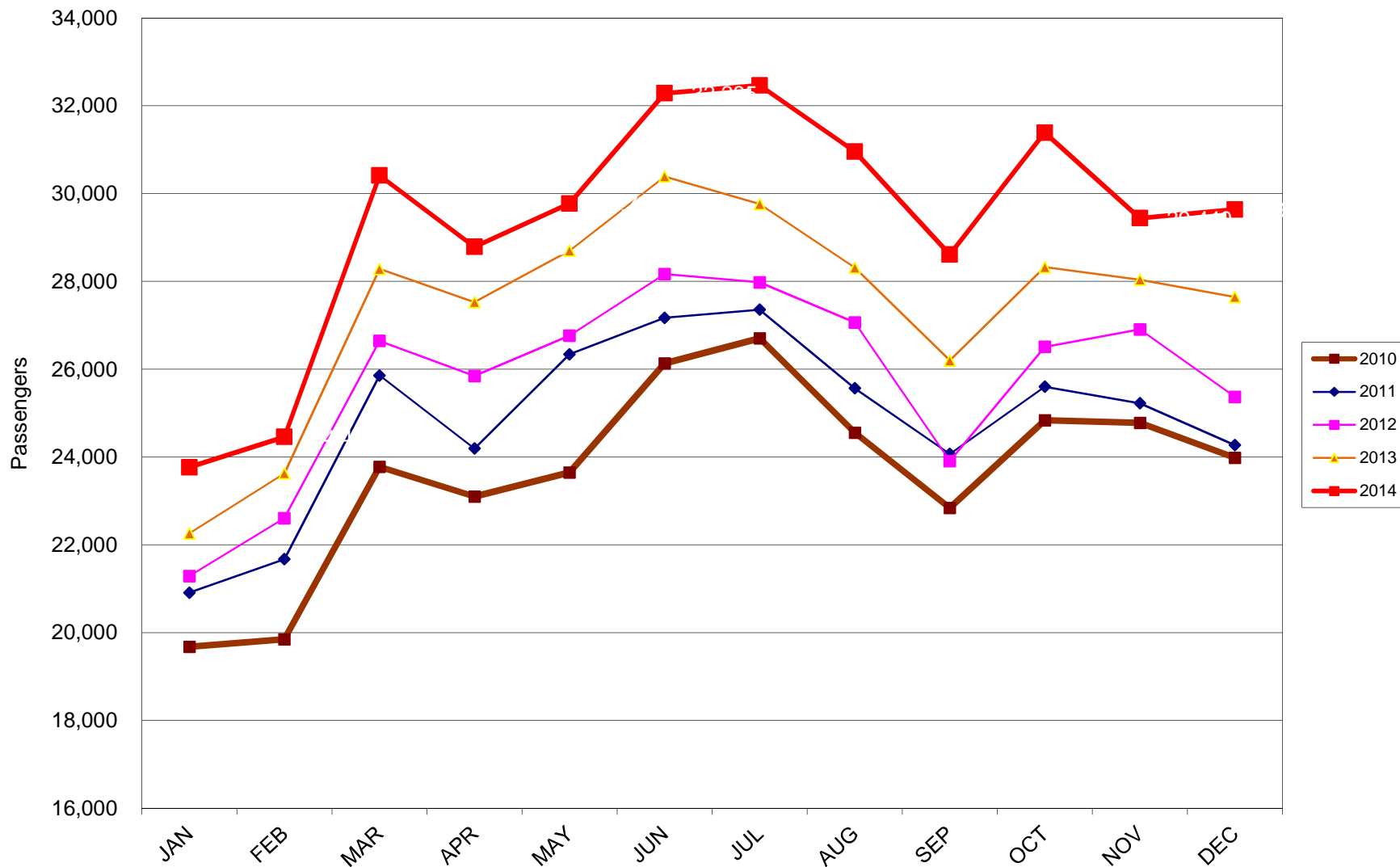
AUSTIN PASSENGER TRAFFIC 5 Year Trend



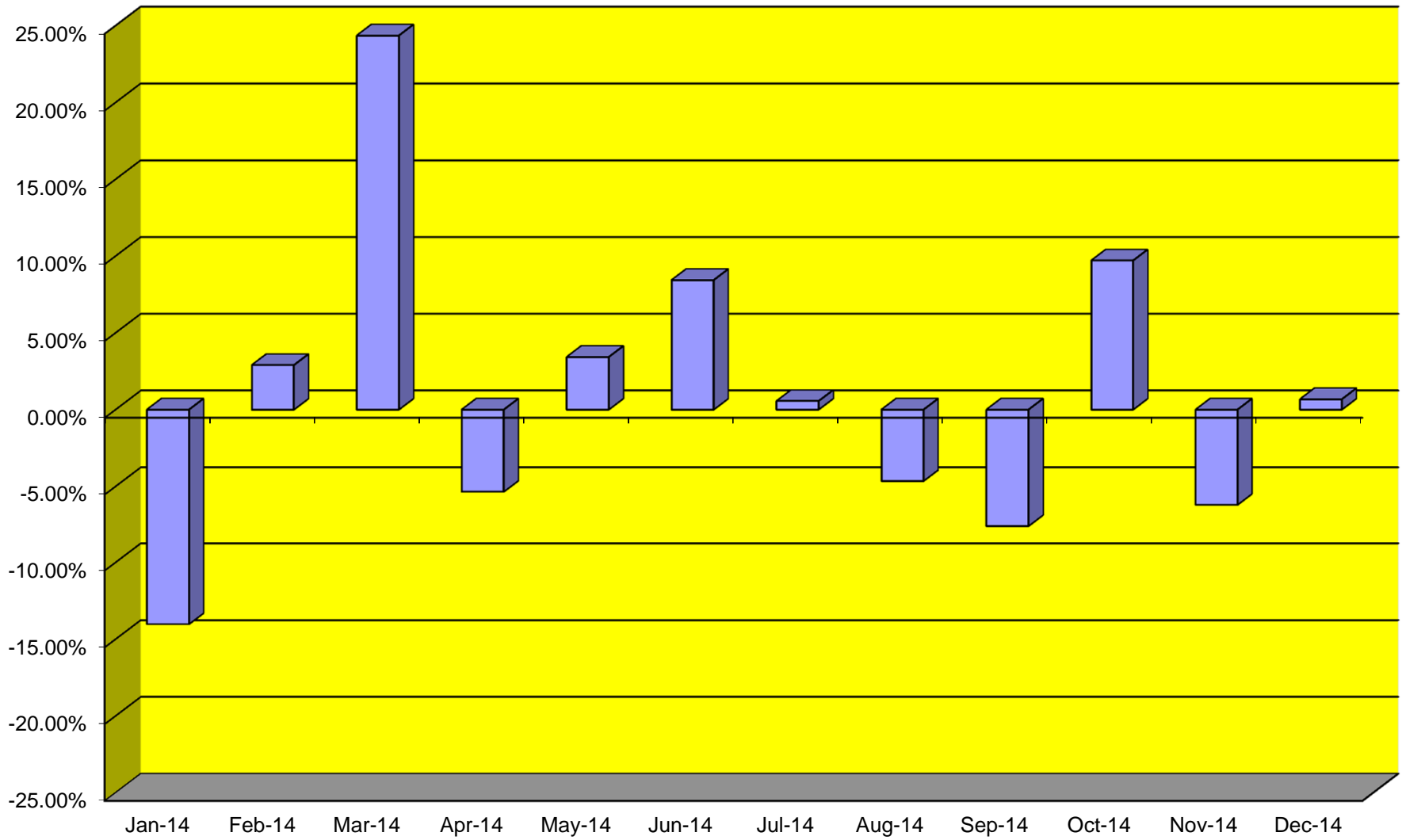
TOTAL CARGO POUNDAGE - AUSTIN, TEXAS



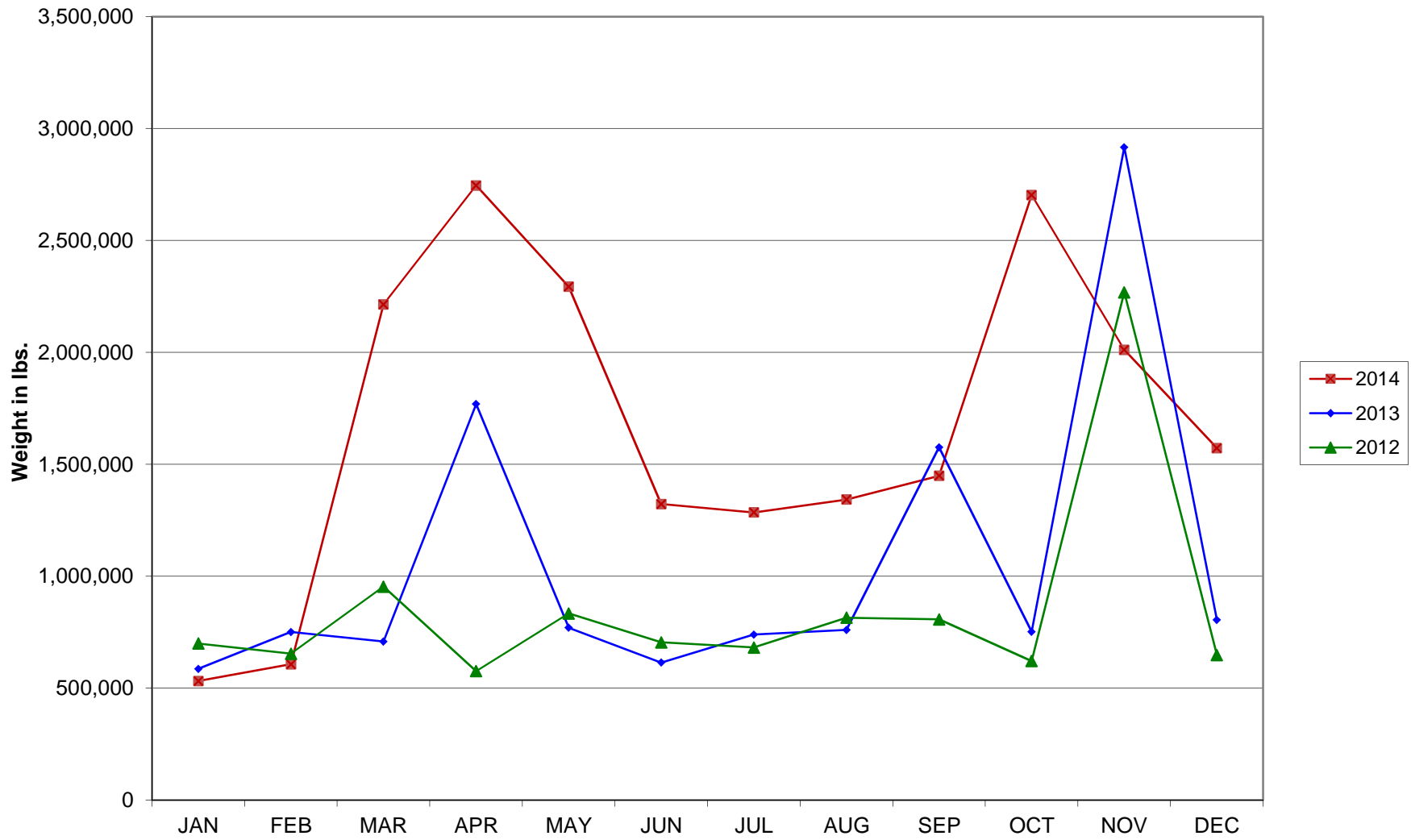
Average Daily Passengers



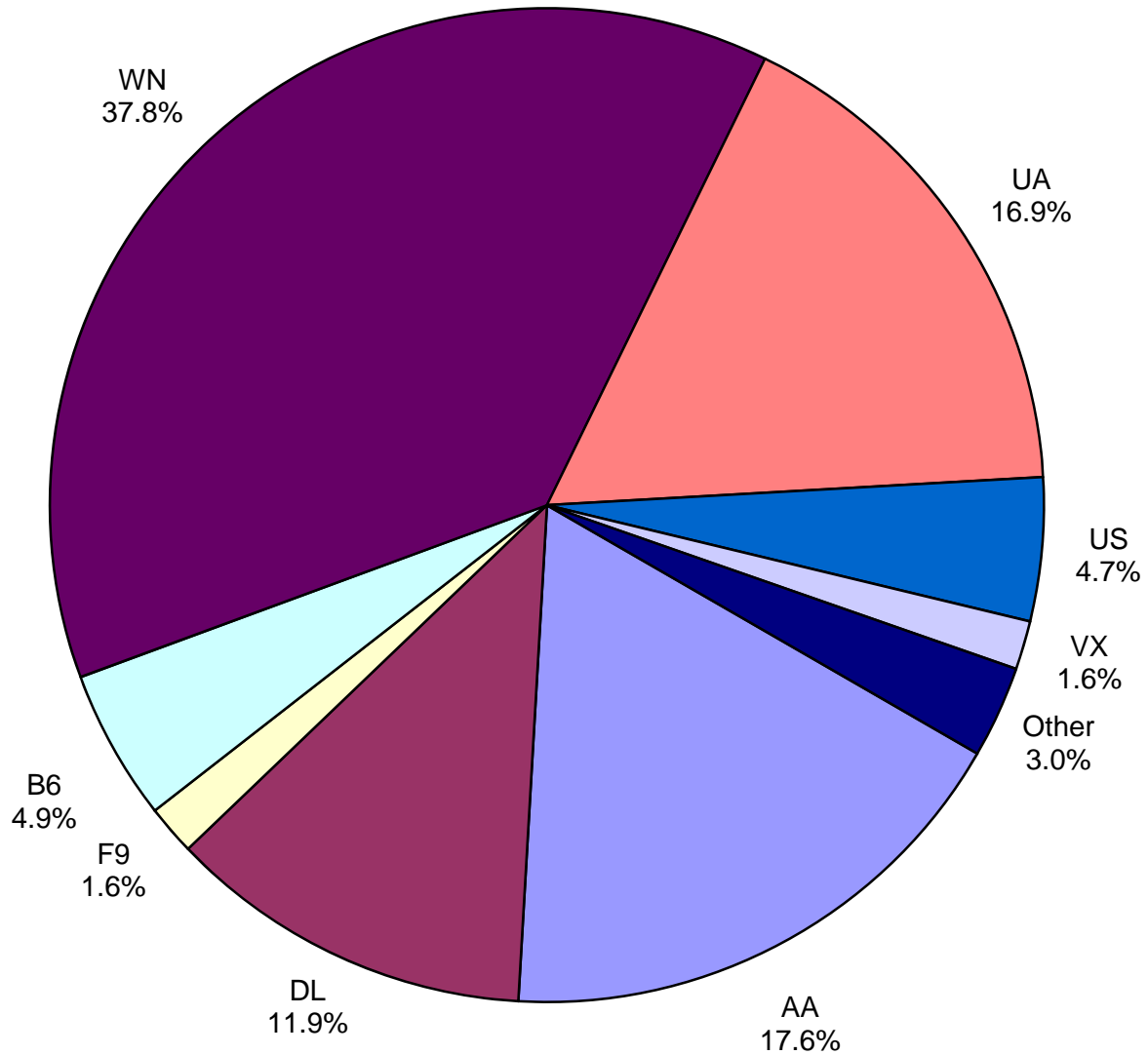
Monthly % Change in Average Daily Passengers



History of International Air Cargo



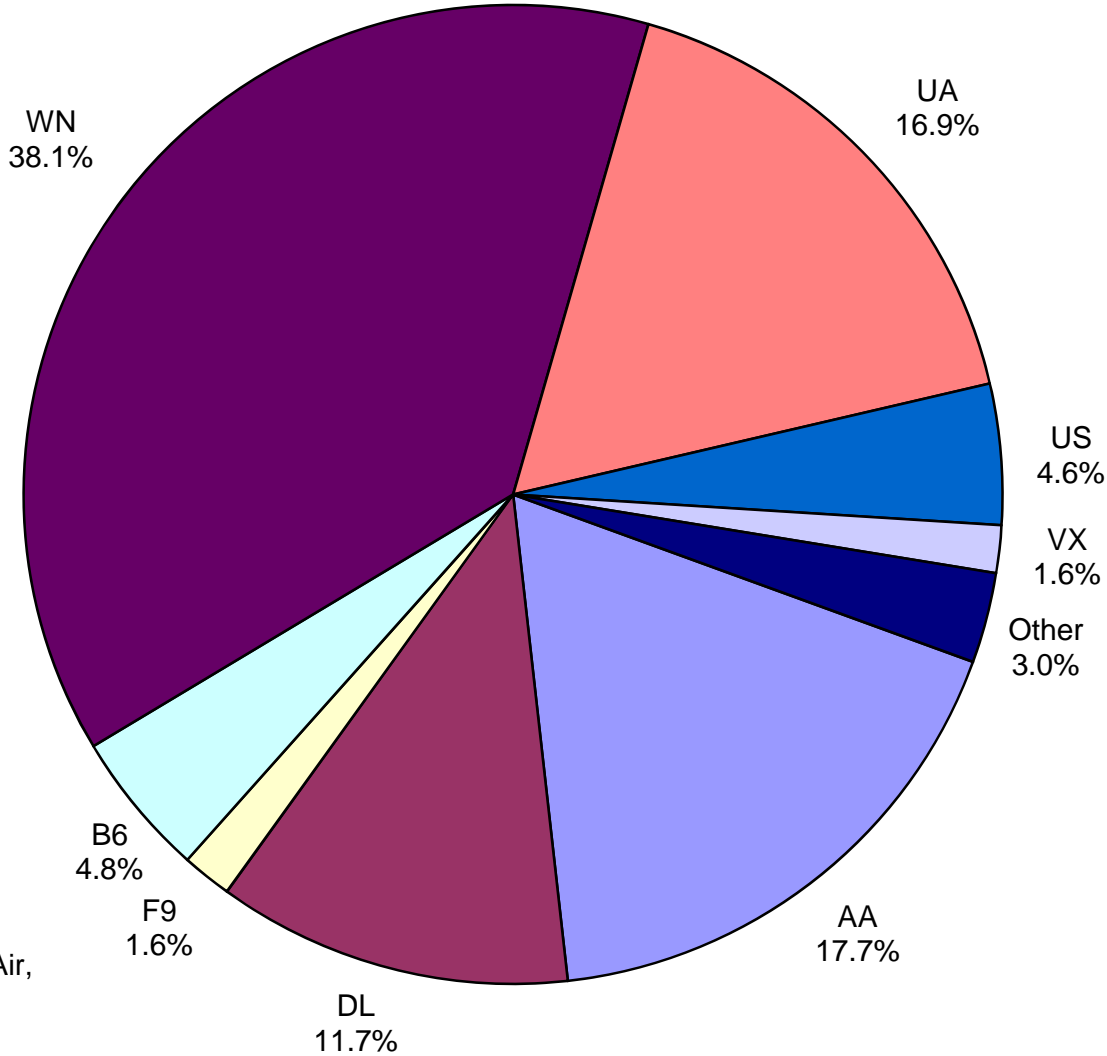
**Total Passengers
December 2014**



Other: Aeromar, Alaska, Allegiant, British Airways, Texas Sky, Republic Airlines and Sun Country

Note: Delta, United Airlines and US Airways percentages include Affiliates.

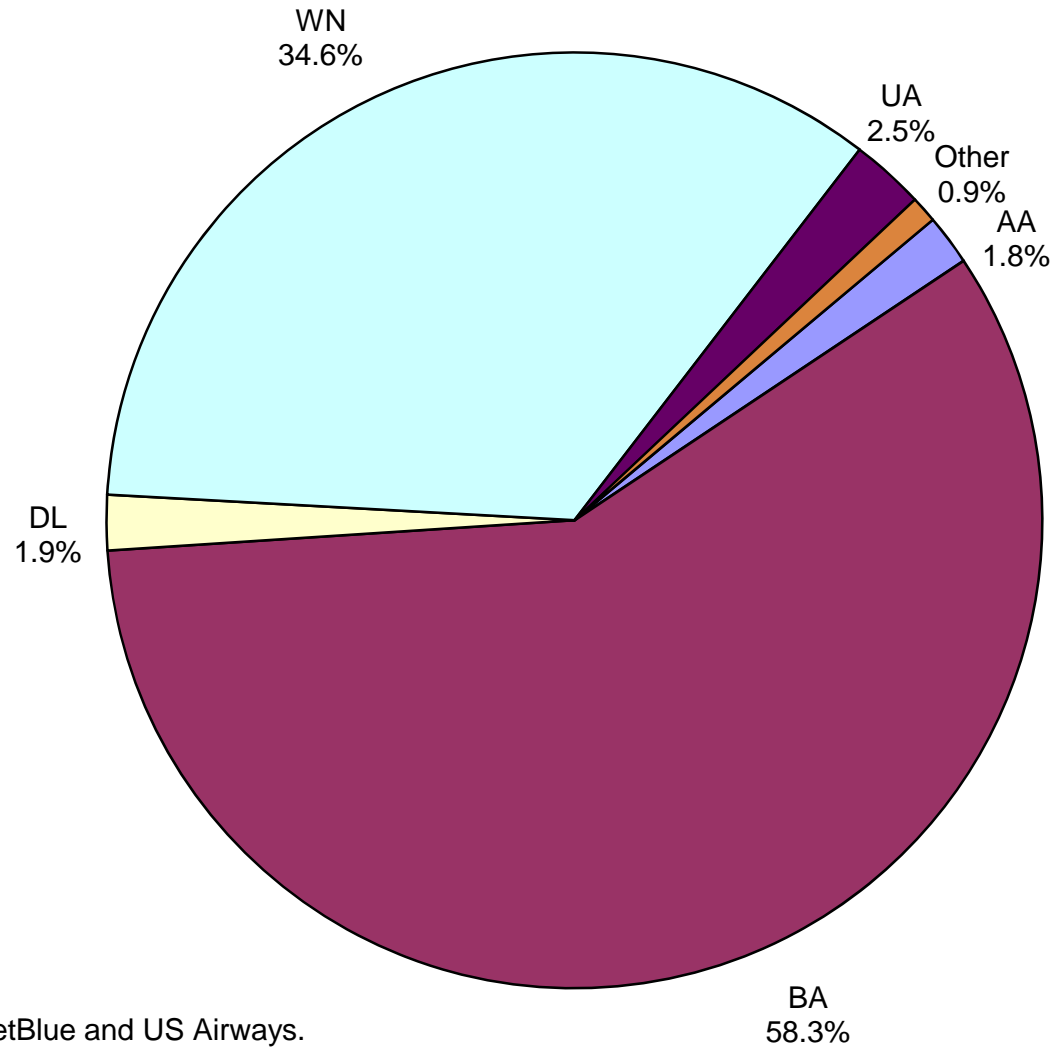
**All Passenger Carriers
Enplaned Revenue Passengers
December 2014**



Other: Aeromar, Alaska, Allegiant Air, British Airways, Texas Sky, Republic Airlines and Sun Country

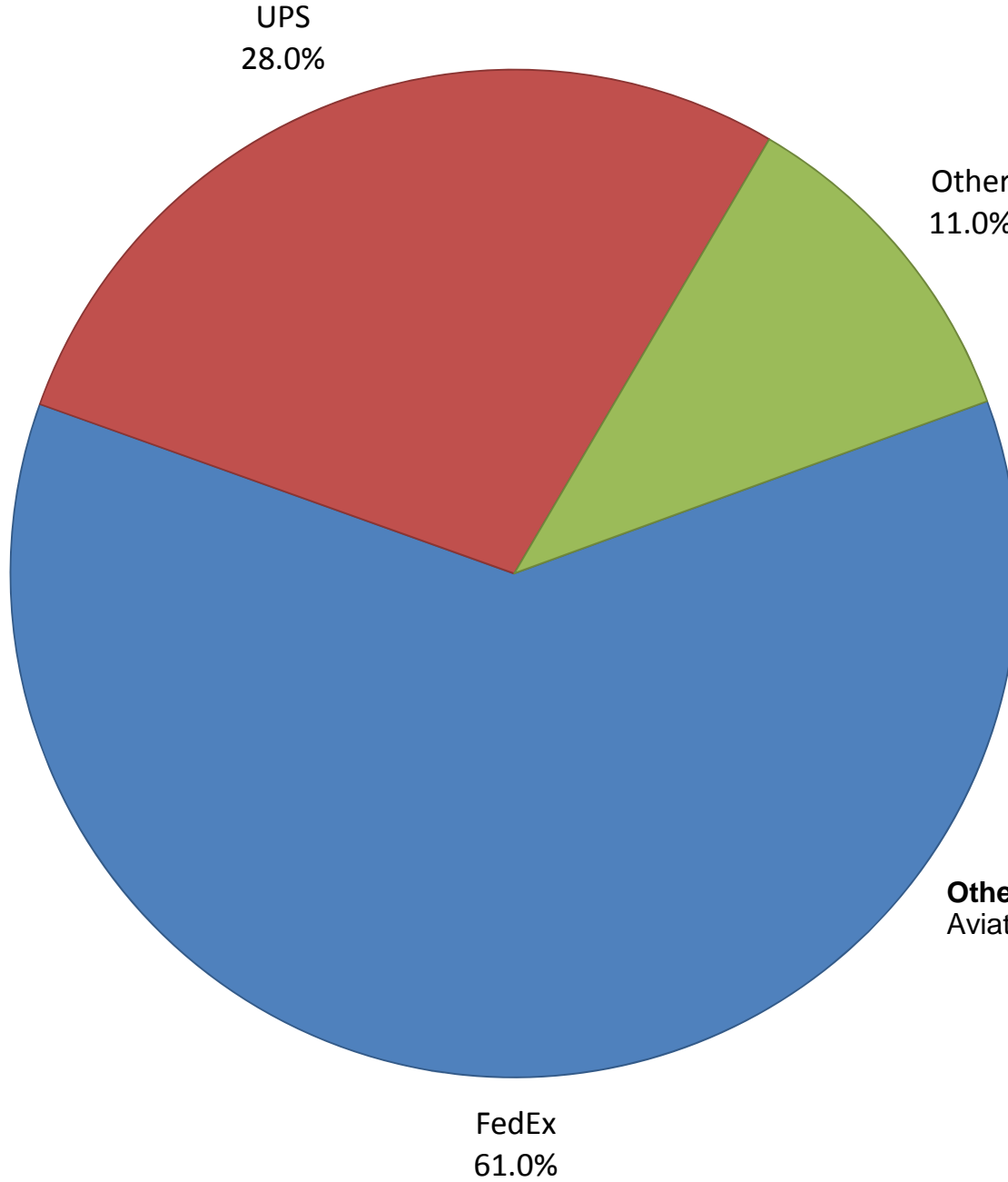
Note: Delta, United Airlines and US Airways percentages include Affiliates.

**AUS Belly Freight Market Shares
December 2014**



Other = Alaska Airlines, JetBlue and US Airways.

Air Cargo Market Shares December 2014



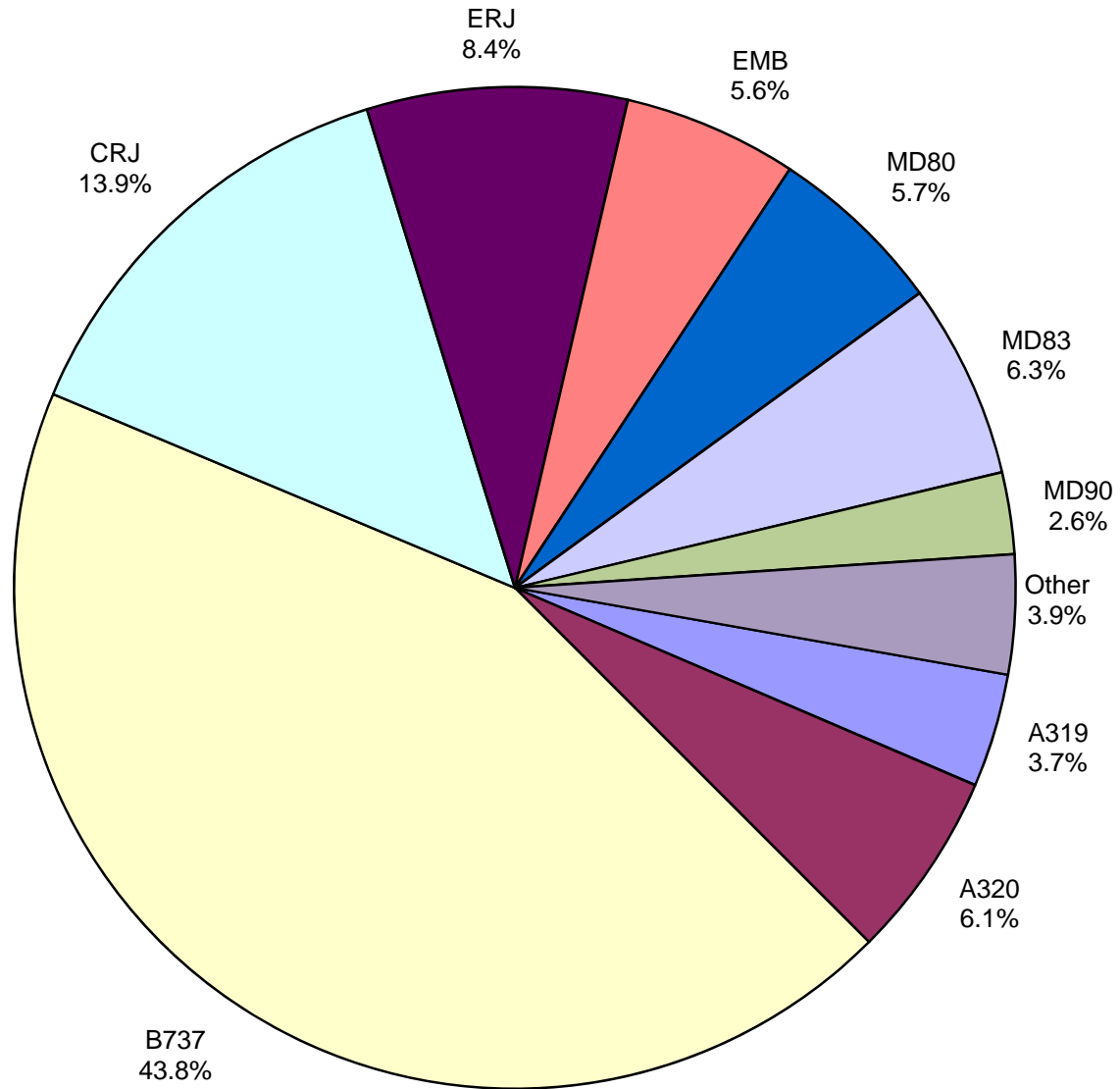
Other
11.0%

Other: ABX Air, Ameriflight, Baron Aviation, Martinaire, and Southern Air

FedEx
61.0%

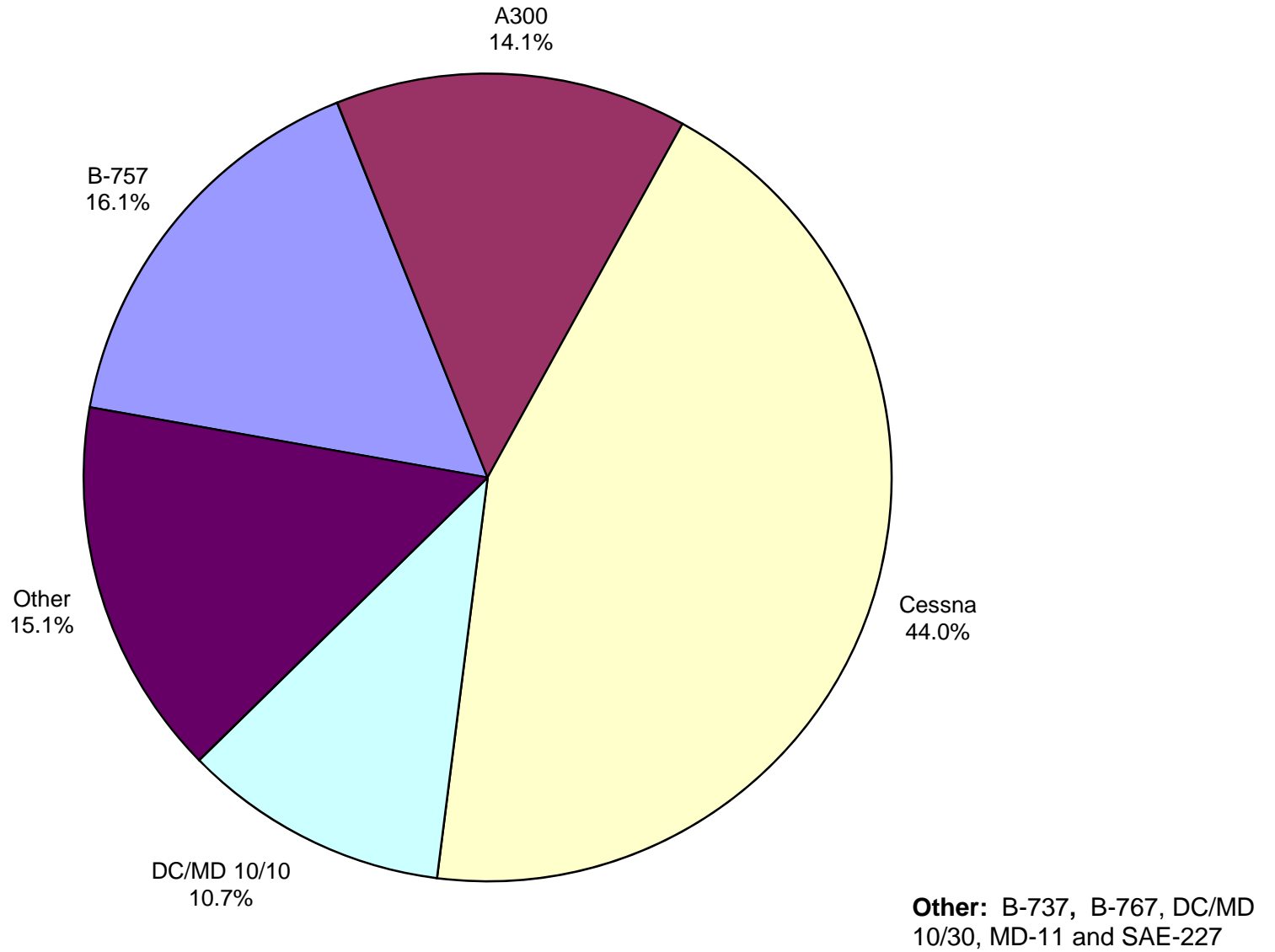
UPS
28.0%

AUS Scheduled Passenger Aircraft Fleet Mix December 2014



Other: B-757, B-787, BAE-3200 and MD-88

**AUS Scheduled Cargo Aircraft Fleet Mix
December 2014**



Austin-Bergstrom International Airport

PAX Detail Report - December, 2014

Period Company	12/2014	12/2013	YTD		YTD 2014	YTD 2013	2014		2013 Share	Share Share	Diff
			Difference	Change			Difference	Change			
AeroMexico Airlines/Aerovias de Mexico, S.A. de C.V.	0	0	0	0.0	434	638	-204	-32.0	0.0	0.0	0.0
Alaska Airlines, Inc.	10,293	10,027	266	2.7	116,572	115,184	1,388	1.2	1.1	1.1	-0.1
Allegiant Air Charter	0	0	0	0.0	0	1,520	-1,520	-100.0	0.0	0.0	0.0
Allegiant Air, LLC	6,237	6,152	85	1.4	70,918	11,643	59,275	509.1	0.7	0.1	0.5
American Airlines, Inc.	161,522	145,524	15,998	11.0	1,928,520	1,849,381	79,139	4.3	18.0	18.5	-0.5
Ameristarjet Charter Inc.	0	0	0	0.0	10	96	-86	-89.6	0.0	0.0	0.0
British Airways Plc	9,214	0	9,214	0.0	96,973	0	96,973	0.0	0.9	0.0	0.9
Continental Airlines	0	0	0	0.0	0	103,392	-103,392	-100.0	0.0	1.0	-1.0
Delta Air Lines	109,582	102,271	7,311	7.1	1,332,449	1,207,041	125,408	10.4	12.4	12.0	0.4
Express Jet Airlines, Inc.	0	0	0	0.0	0	46,979	-46,979	-100.0	0.0	0.5	-0.5
Frontier Airlines, Inc.	14,920	14,512	408	2.8	188,216	163,967	24,249	14.8	1.8	1.6	0.1
GoJet Airlines d/b/a United Express	0	0	0	0.0	0	139,517	-139,517	-100.0	0.0	1.4	-1.4
JetBlue Airways Corporation	45,188	53,304	-8,116	-15.2	587,451	641,426	-53,975	-8.4	5.5	6.4	-0.9
Mesa Airlines Inc - DIP	0	0	0	0.0	0	288,544	-288,544	-100.0	0.0	2.9	-2.9
Miami Air International Inc.	0	0	0	0.0	226	1,018	-792	-77.8	0.0	0.0	0.0
North American Airlines/World Airways	0	0	0	0.0	0	192	-192	-100.0	0.0	0.0	0.0
Omni Air International	0	0	0	0.0	190	0	190	0.0	0.0	0.0	0.0
Public Charters, Inc., d/b/a Texas Sky	193	0	193	0.0	401	0	401	0.0	0.0	0.0	0.0
Republic Airlines, Inc.	124	0	124	0.0	1,362	1,890	-528	-27.9	0.0	0.0	0.0
Shuttle America Corporation	0	0	0	0.0	0	85,595	-85,595	-100.0	0.0	0.9	-0.9
SkyWest Airlines, Inc	0	0	0	0.0	0	346,353	-346,353	-100.0	0.0	3.5	-3.5
Southwest Airlines	347,810	349,340	-1,530	-0.4	4,001,663	3,906,335	95,328	2.4	37.3	39.0	-1.7
Sun Country Airlines/ MN Airlines, LLC	150	0	150	0.0	1,590	1,096	494	45.1	0.0	0.0	0.0
Transportes Aeromar S.A. de C.V.	1,234	1,516	-282	-18.6	10,541	2,664	7,877	295.7	0.1	0.0	0.1
United Airlines, Inc.	154,972	146,413	8,559	5.8	1,779,561	855,388	924,173	108.0	16.6	8.5	8.1
US Airways Group, Inc.	42,796	20,624	22,172	107.5	489,047	194,411	294,636	151.6	4.6	1.9	2.6
Virgin America Inc.	14,579	7,274	7,305	100.4	111,729	52,084	59,645	114.5	1.0	0.5	0.5
Vision Airlines, Inc.	0	0	0	0.0	952	1,440	-488	-33.9	0.0	0.0	0.0
World Atlantic Airlines	0	0	0	0.0	0	164	-164	-100.0	0.0	0.0	0.0
Report Totals	918,814	856,957	61,857	7.2%	10,718,854	10,017,958	700,896	7.0%			

Statistics Included in Report:

Domestic Passengers: Enplaned Revenue, Deplaned Revenue, Enplaned Non-Revenue, Deplaned Non-Revenue
 International Passengers: Enplaned Revenue, Deplaned Revenue, Enplaned Non-Revenue, Deplaned Non-Revenue

Austin-Bergstrom International Airport

Summary Landing Report

Landing Type: Total

Month	2014		2013		2012		% Change 2014 - 2013		% Change 2013 - 2012	
	Count	Weight	Count	Weight	Count	Weight	Count	Weight	Count	Weight
January	4,213	478,945,673	4,176	469,844,487	4,033	441,029,354	0.89%	1.94%	3.55%	6.53%
February	3,839	437,160,505	3,824	428,117,442	3,892	432,535,353	0.39%	2.11%	-1.75%	-1.02%
March	4,746	552,992,572	4,660	536,989,561	4,372	496,635,886	1.85%	2.98%	6.59%	8.13%
April	4,515	521,133,372	4,425	504,739,959	4,260	479,535,174	2.03%	3.25%	3.87%	5.26%
May	4,749	553,415,664	4,687	545,881,910	4,385	509,470,460	1.32%	1.38%	6.89%	7.15%
June	4,821	569,196,868	4,680	534,286,437	4,425	503,932,220	3.01%	6.53%	5.76%	6.02%
July	5,000	590,375,055	4,788	547,957,989	4,586	524,142,423	4.43%	7.74%	4.40%	4.54%
August	4,752	555,732,827	4,737	541,522,098	4,532	519,056,485	0.32%	2.62%	4.52%	4.33%
September	4,513	539,605,431	4,320	497,853,836	4,181	484,324,879	4.47%	8.39%	3.32%	2.79%
October	4,842	589,981,037	4,613	540,694,783	4,424	512,451,397	4.96%	9.12%	4.27%	5.51%
November	4,532	546,643,220	4,448	517,542,366	4,283	504,246,217	1.89%	5.62%	3.85%	2.64%
December	4,826	572,253,823	4,534	521,172,463	4,391	498,622,124	6.44%	9.80%	3.26%	4.52%
Totals for Selected Period	55,348	6,507,436,047	53,892	6,186,603,331	51,764	5,905,981,972	2.70%	5.19%	4.11%	4.75%
Yearly Totals	55,348	6,507,436,047	53,892	6,186,603,331	51,764	5,905,981,972			4.11%	4.75%