

Austin-Bergstrom International Airport

Aviation Activity Report

Calendar Year 2014 vs 2013

	09/2014	09/2013	Percent Change	01/2014 - 09/2014	01/2013 - 09/2013	Percent Change
<u>Passenger Activity</u>						
Domestic Enplaned Revenue	413,381	380,599	8.61	3,826,637	3,602,480	6.22
Domestic Deplaned Revenue	416,059	386,029	7.78	3,815,731	3,621,651	5.36
International Enplaned Revenue	5,288	1,127	369.21	57,181	18,896	202.61
International Deplaned Revenue	5,354	1,616	231.31	57,880	21,614	167.79
Domestic Enplaned Non-Revenue	9,608	8,722	10.16	96,089	94,372	1.82
Domestic Deplaned Non-Revenue	8,421	7,866	7.06	88,945	82,534	7.77
International Enplaned Non-Revenue	68	0	0.00	732	92	695.65
International Deplaned Non-Revenue	79	24	229.17	680	161	322.36
Passenger Totals	858,258	785,983	9.20	7,943,875	7,441,800	6.75

CURRENT PASSENGER RECORD = 1,006,417 RECORD SET = JULY 2014

Aircraft Operations

Air Carrier	8,641	8,167	5.80	77,976	76,167	2.38
Commuter & Air Taxi	1,274	1,405	-9.32	12,498	12,552	-0.43
Military	599	478	25.31	5,704	4,779	19.36
General Aviation						
Itinerant	4,374	4,163	5.07	36,981	36,862	0.32
Local	368	206	78.64	1,734	1,956	-11.35
Total G.A.	4,742	4,369	8.54	38,715	38,818	-0.27
Total Operations	15,256	14,419	5.80	134,893	132,316	1.95

Austin-Bergstrom International Airport

Aviation Activity Report

Calendar Year 2014 vs 2013

	09/2014	09/2013	Percent Change	01/2014 - 09/2014	01/2013 - 09/2013	Percent Change
<u>Cargo Activity</u>						
Mail						
Domestic Enplaned Mail	138,803	99,998	38.81	1,177,670	972,232	21.13
Domestic Deplaned Mail	152,746	156,831	-2.60	1,460,118	1,448,701	0.79
International Enplaned Mail	0	0	0.00	0	0	0.00
International Deplaned Mail	0	0	0.00	0	2,404	-100.00
Mail Totals	291,549	256,829	13.52	2,637,788	2,423,337	8.85
Cargo						
Domestic Enplaned Cargo	5,566,676	4,471,065	24.50	43,589,199	45,981,712	-5.20
Domestic Deplaned Cargo	4,932,708	5,579,463	-11.59	47,825,948	52,715,293	-9.28
International Enplaned Cargo	410,937	413,089	-0.52	4,139,508	4,191,451	-1.24
International Deplaned Cargo	170,312	1,162,741	-85.35	2,216,290	4,080,940	-45.69
Cargo Totals	11,080,633	11,626,358	-4.69	97,770,945	106,969,396	-8.60
Belly Freight						
Domestic Enplaned Belly Freight	222,903	230,385	-3.25	2,000,835	2,603,590	-23.15
Domestic Deplaned Belly Freight	386,349	407,252	-5.13	3,681,797	3,817,088	-3.54
International Enplaned Belly Freight	329,421	0	0.00	3,597,711	0	0.00
International Deplaned Belly Freight	538,256	0	0.00	3,837,406	0	0.00
Belly Freight Totals	1,476,929	637,637	131.63	13,117,749	6,420,678	104.30
Cargo Totals (Mail, Cargo, Belly Freight)	12,849,111	12,520,824	2.62	113,526,482	115,813,411	-1.97

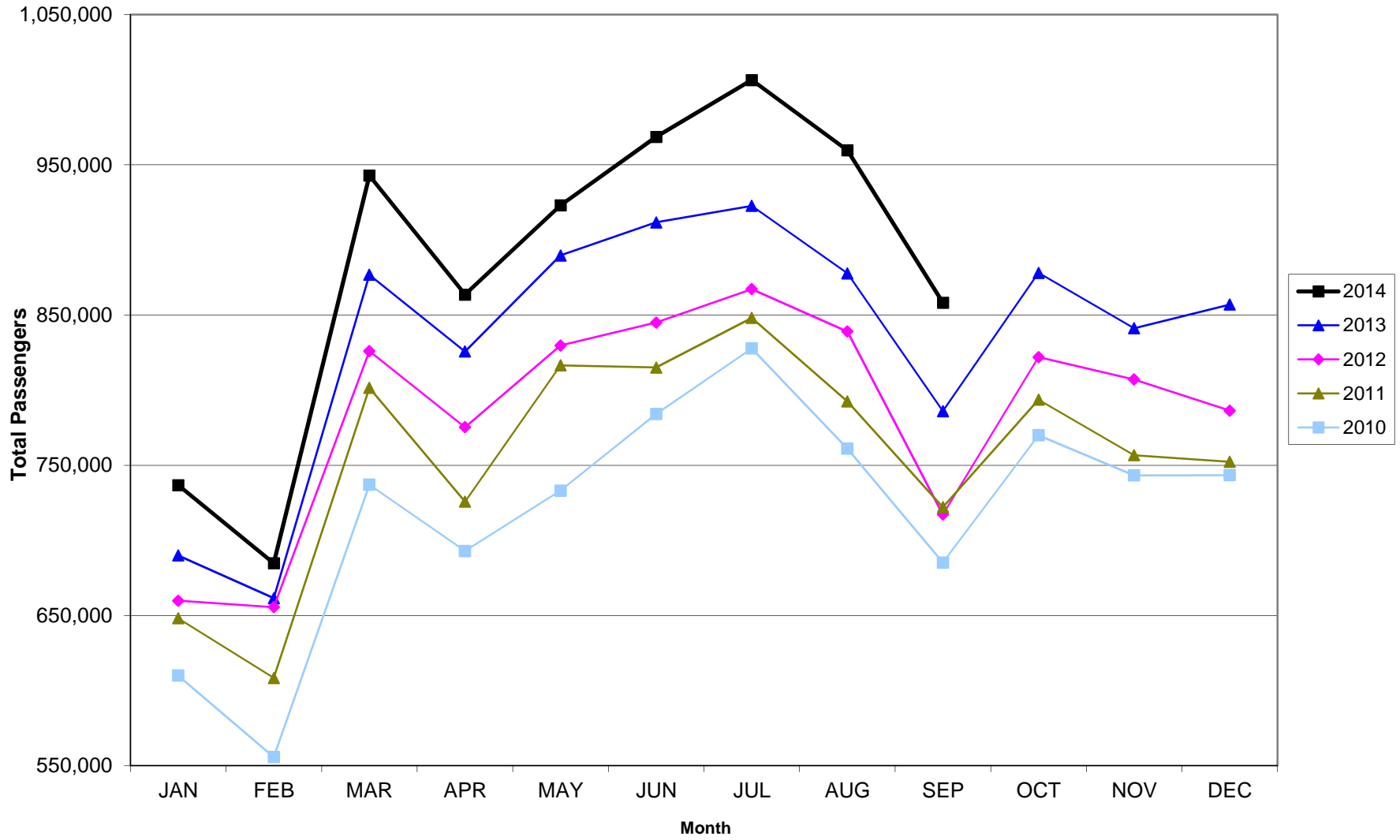
CURRENT CARGO RECORD = 40,215,518

RECORD SET = MARCH 2001

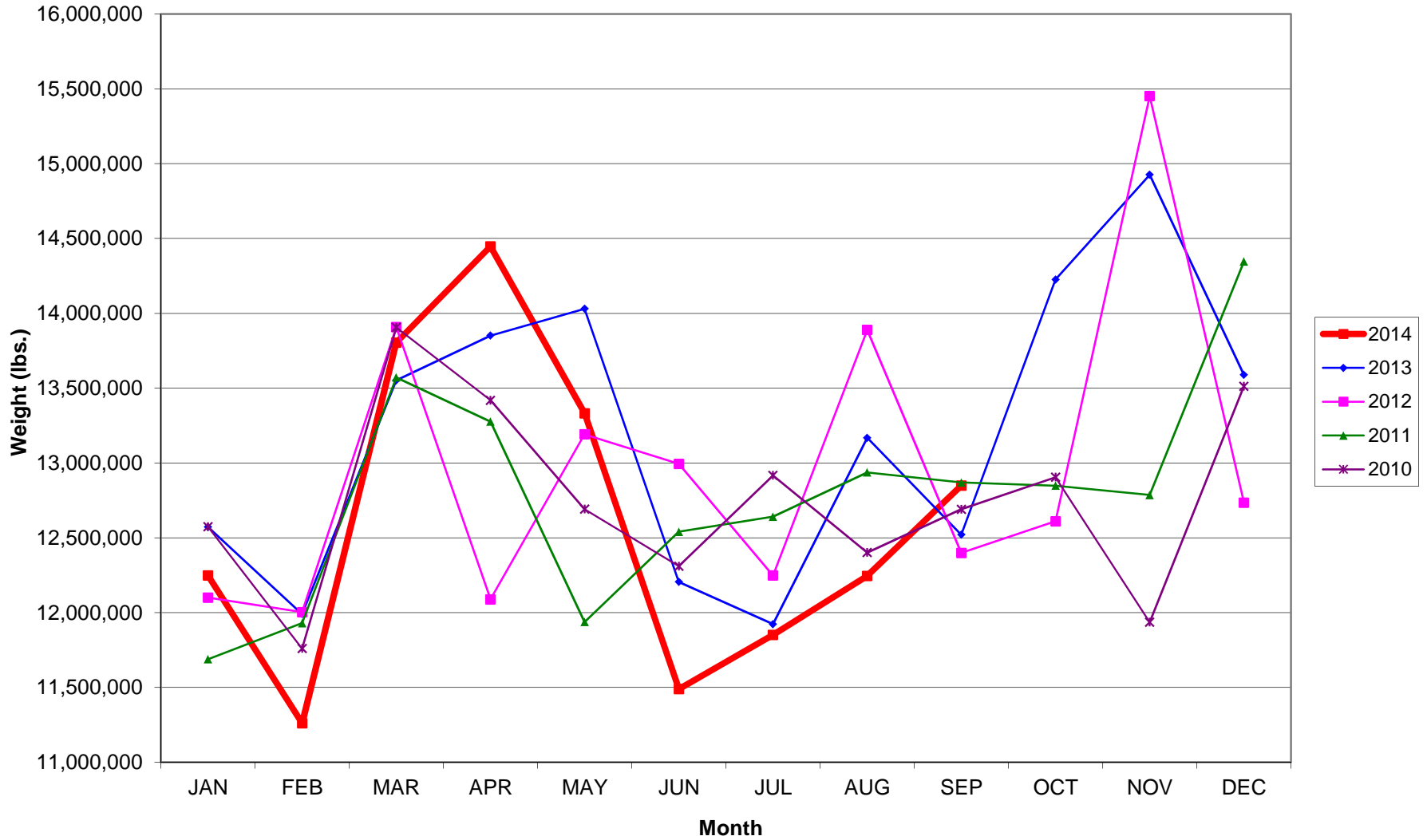
AUS – Airline Codes
September 2014

<u>Code</u>	<u>Carrier</u>
AS	Alaska Airlines, Inc.
G4	Allegiant Air, LLC
AA	American Airlines, Inc.
BA	British Airways Plc
DL	Delta Airlines
F9	Frontier Airlines
B6	JetBlue Airways Corp.
RW	Republic Airlines, Inc
WN	Southwest Airlines
SY	Sun Country Airlines/MN Airlines, LLC
VW	Transportes Aeromar S.A. de C.V.
UA	United Airlines, Inc.
US	US Airways Group, Inc.
VX	Virgin America Inc.

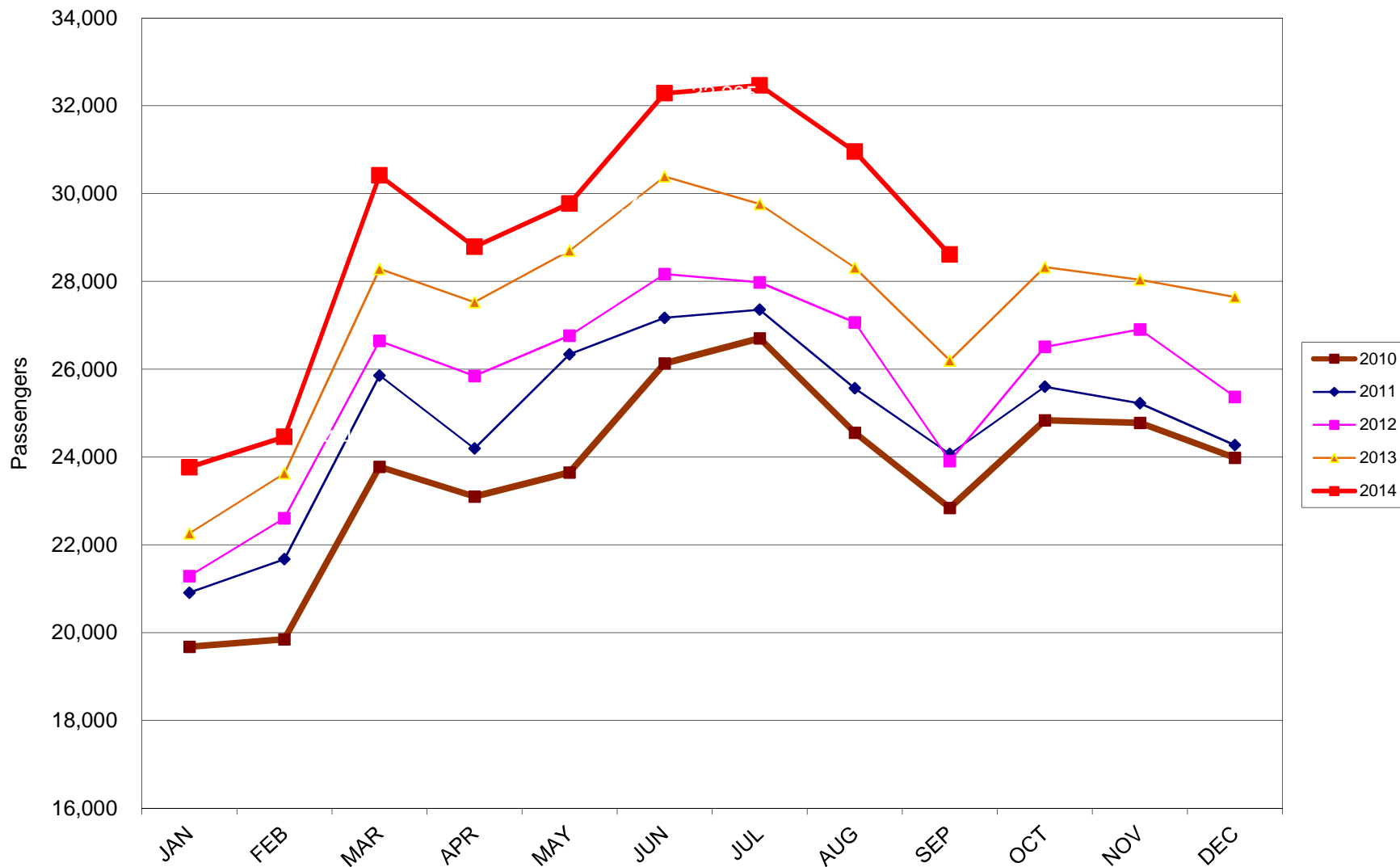
AUSTIN PASSENGER TRAFFIC 5 Year Trend



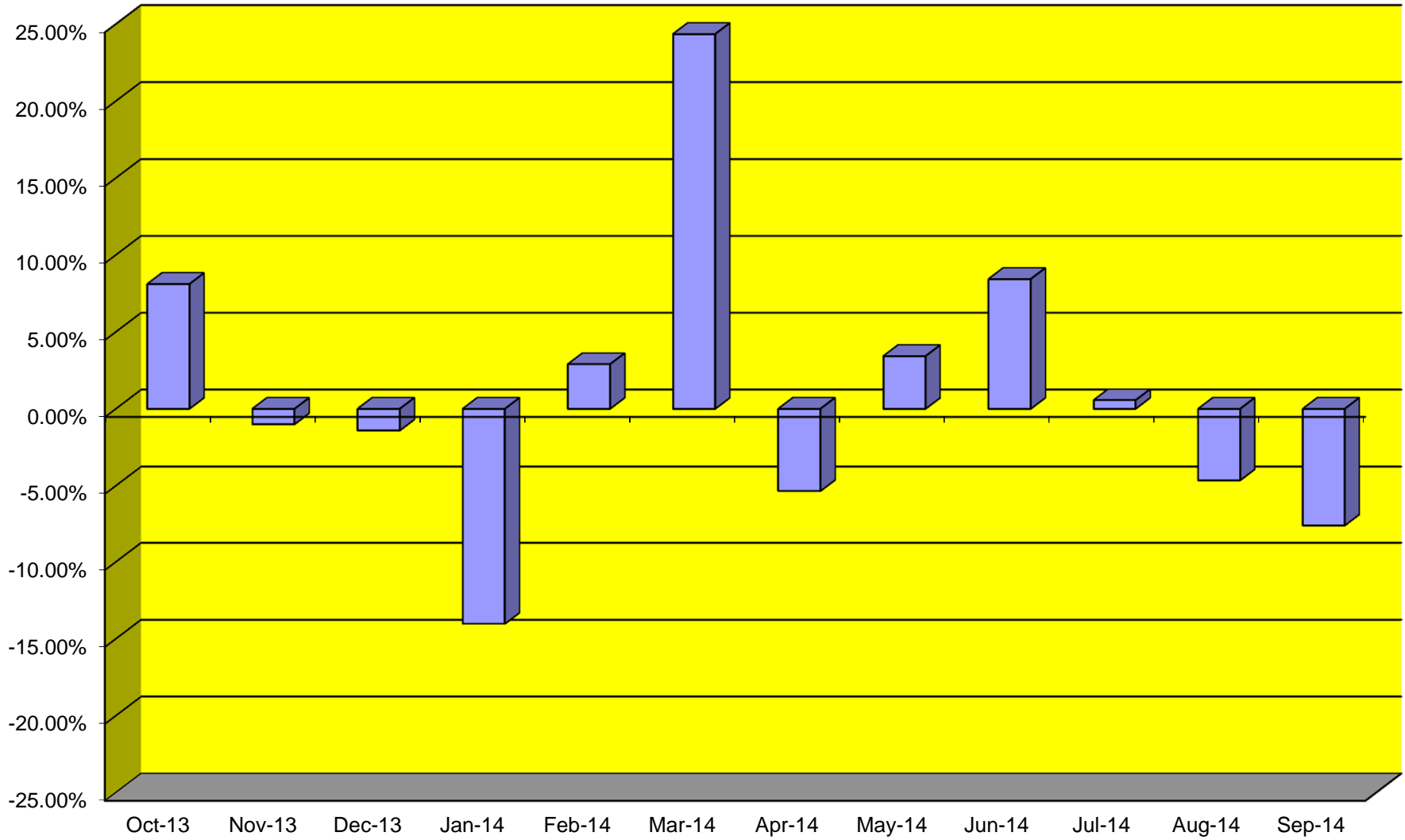
TOTAL CARGO POUNDAGE - AUSTIN, TEXAS



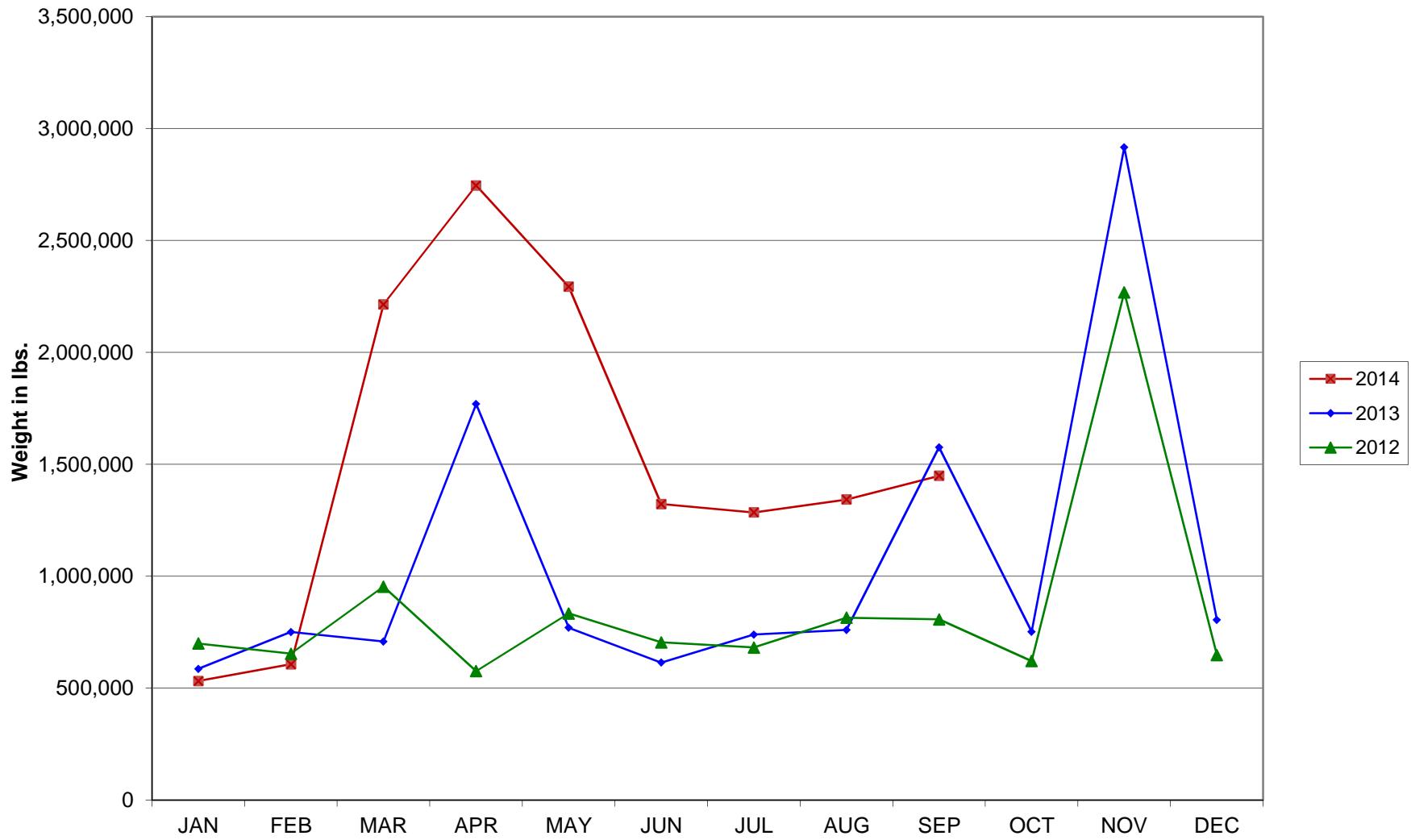
Average Daily Passengers



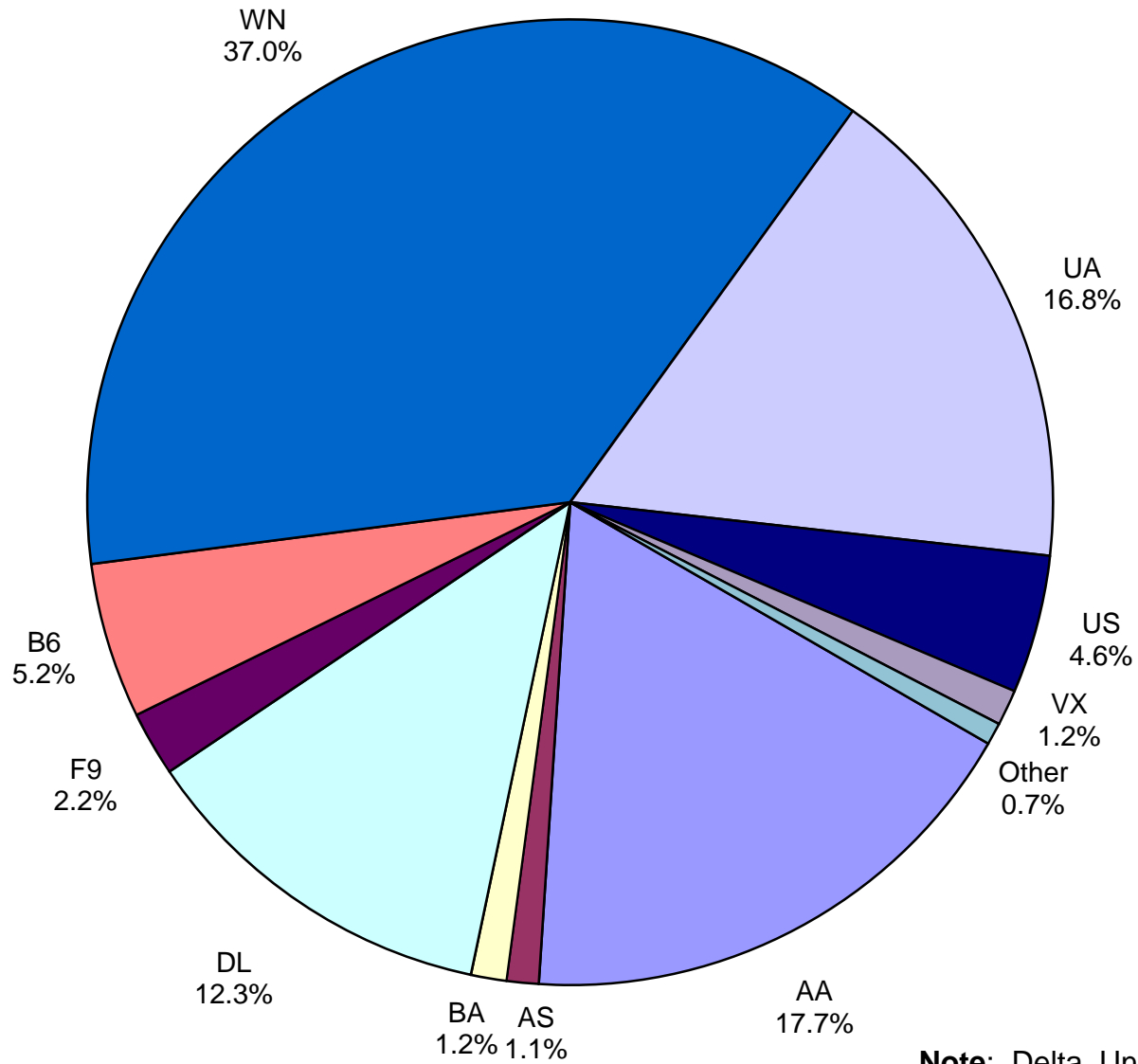
Monthly % Change in Average Daily Passengers



History of International Air Cargo



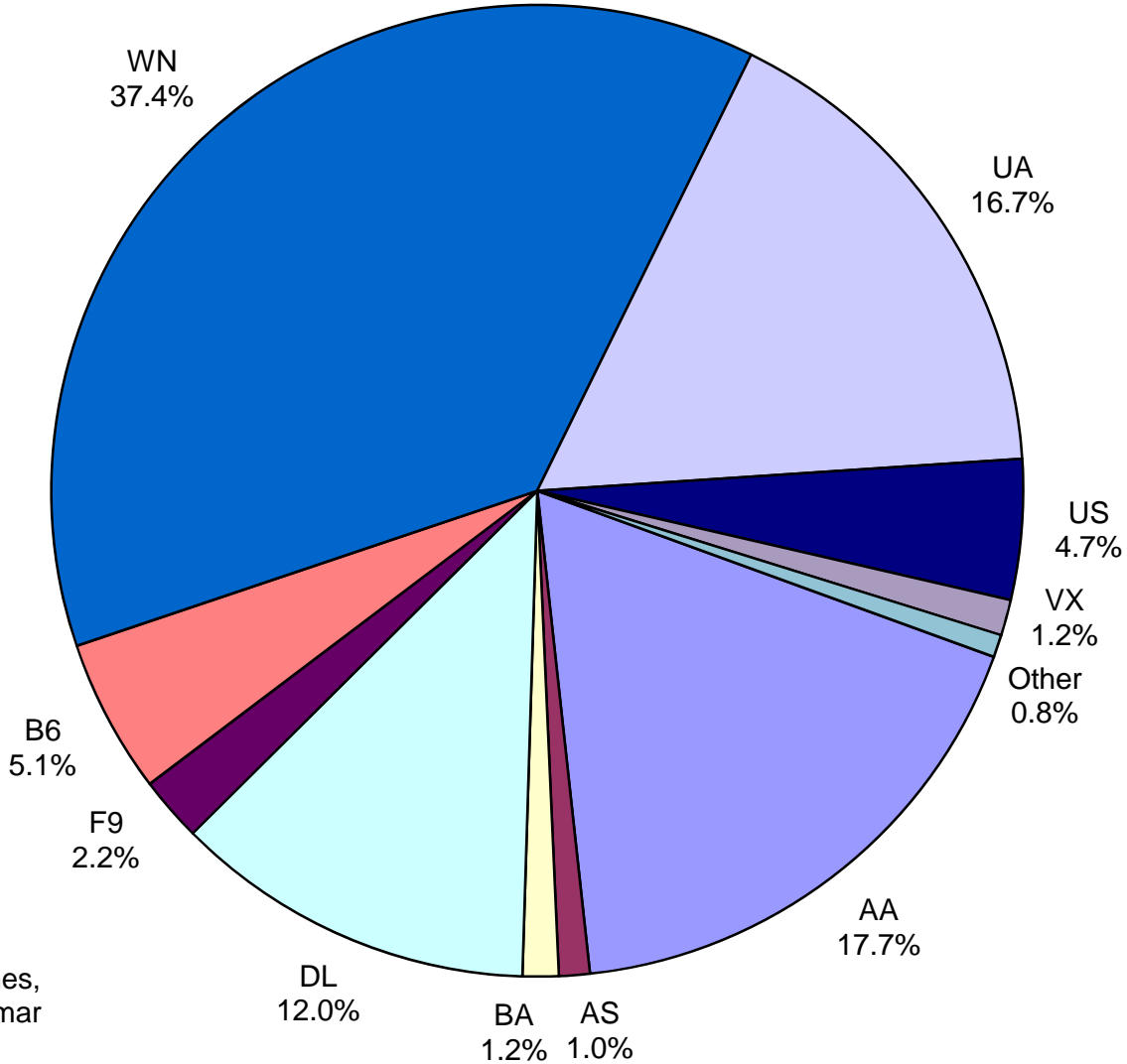
Total Passengers September 2014



Other: Allegiant Air, Republic Airlines, Sun Country and Transportes Aeromar

Note: Delta, United Airlines and US Airways percentages include Affiliates.

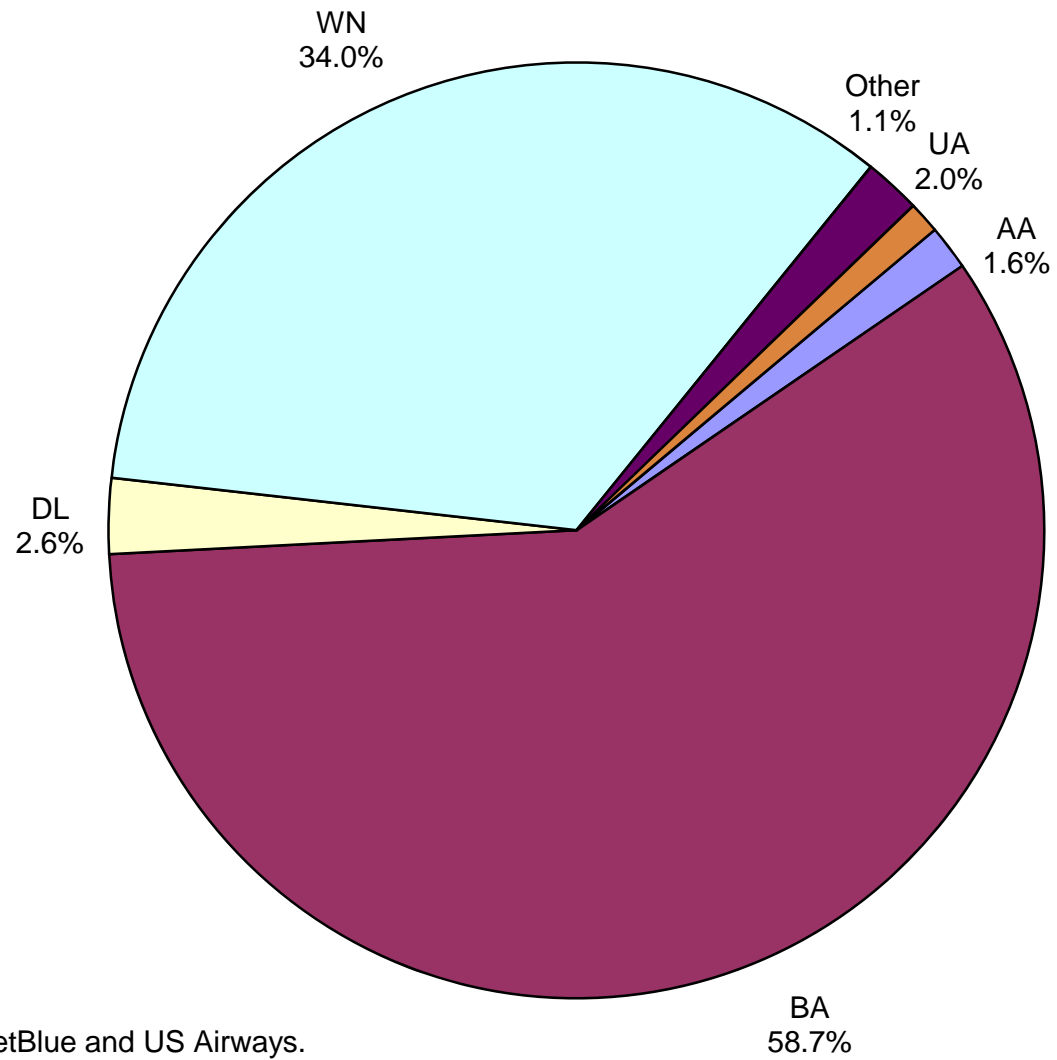
**All Passenger Carriers
Enplaned Revenue Passengers
September 2014**



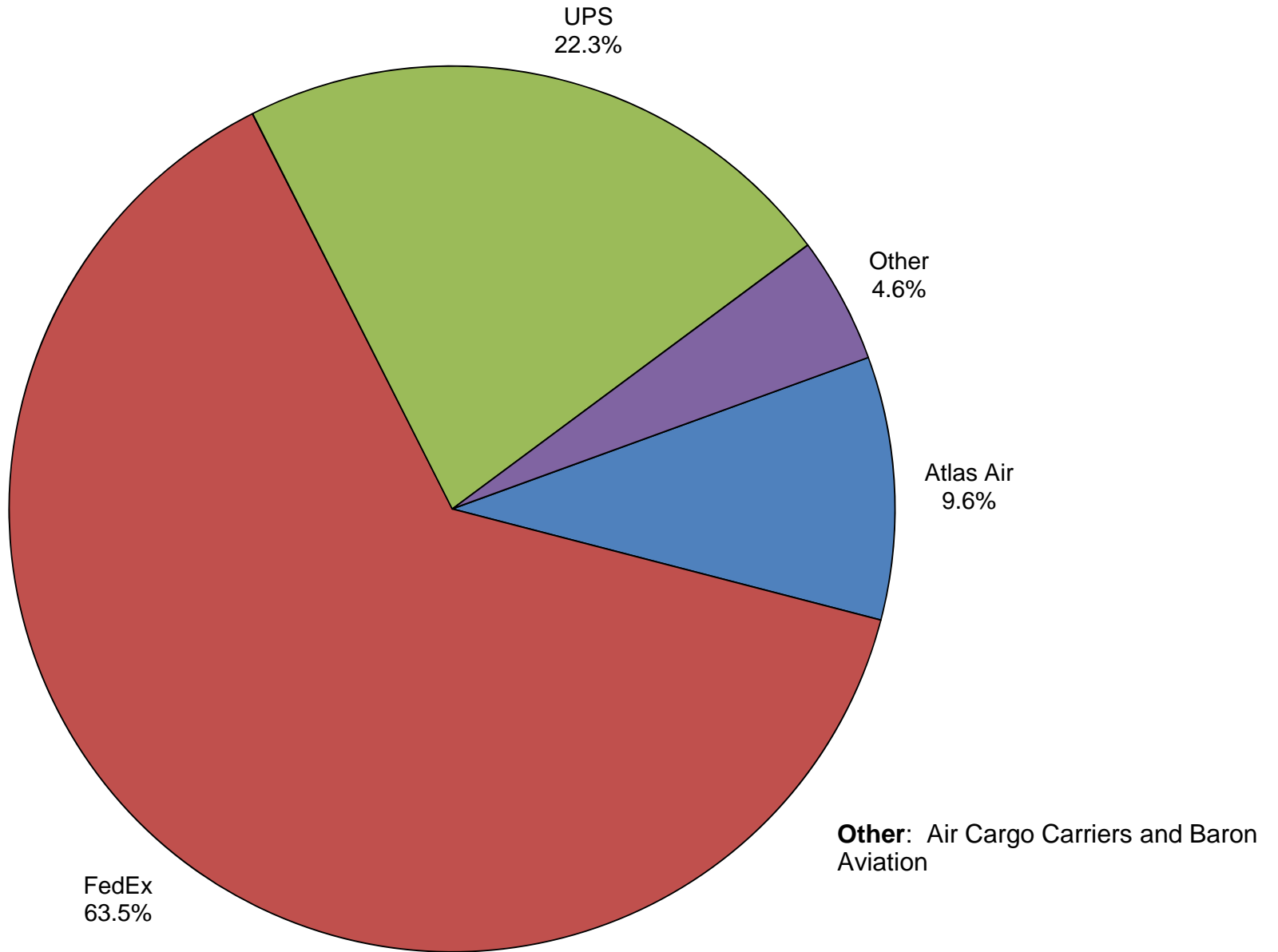
Other: Allegiant Air, Republic Airlines, Sun Country and Transportes Aeromar

Note: Delta, United Airlines and US Airways percentages include Affiliates.

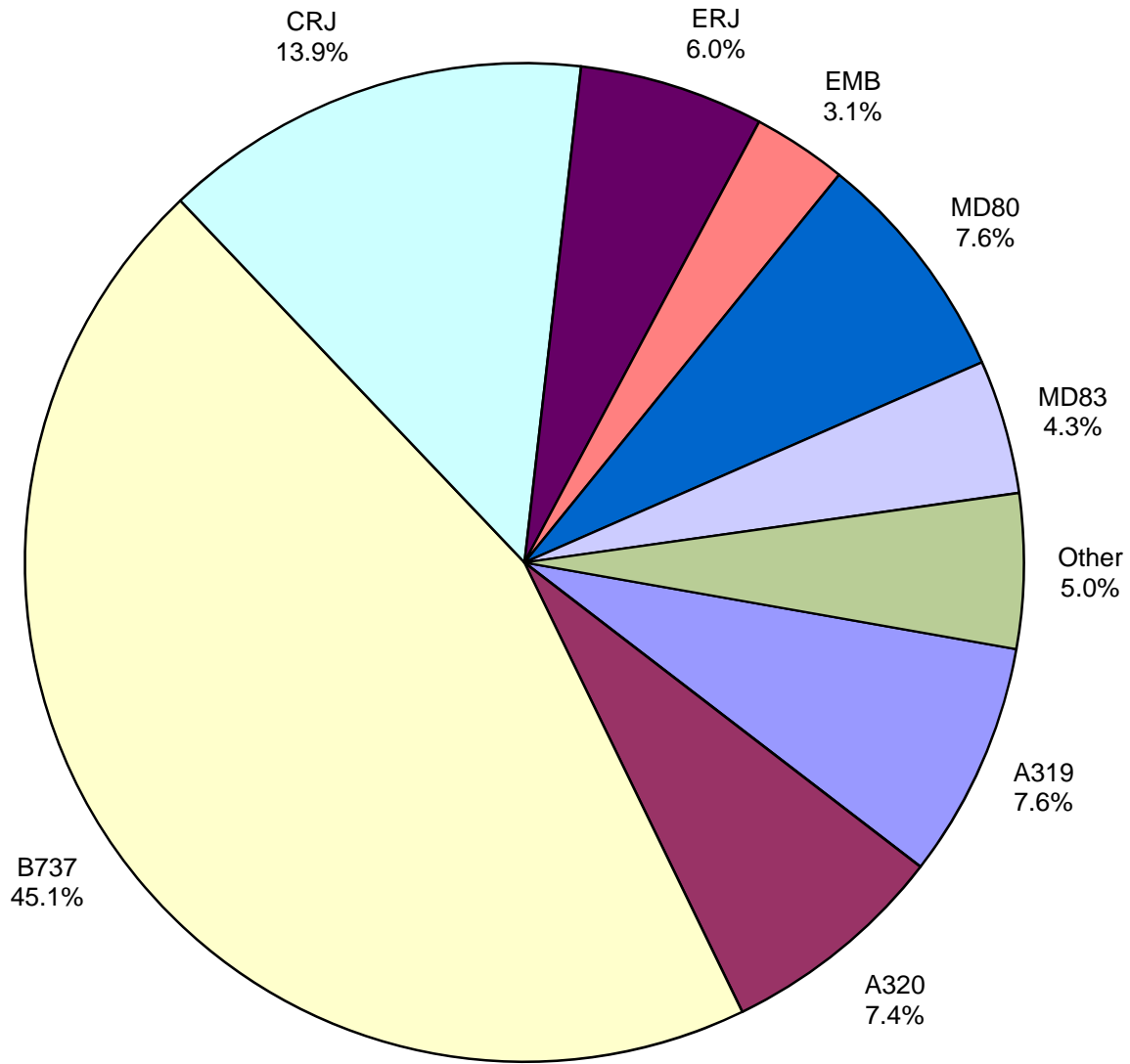
AUS Belly Freight Market Shares September 2014



**Air Cargo Market Shares
September 2014**

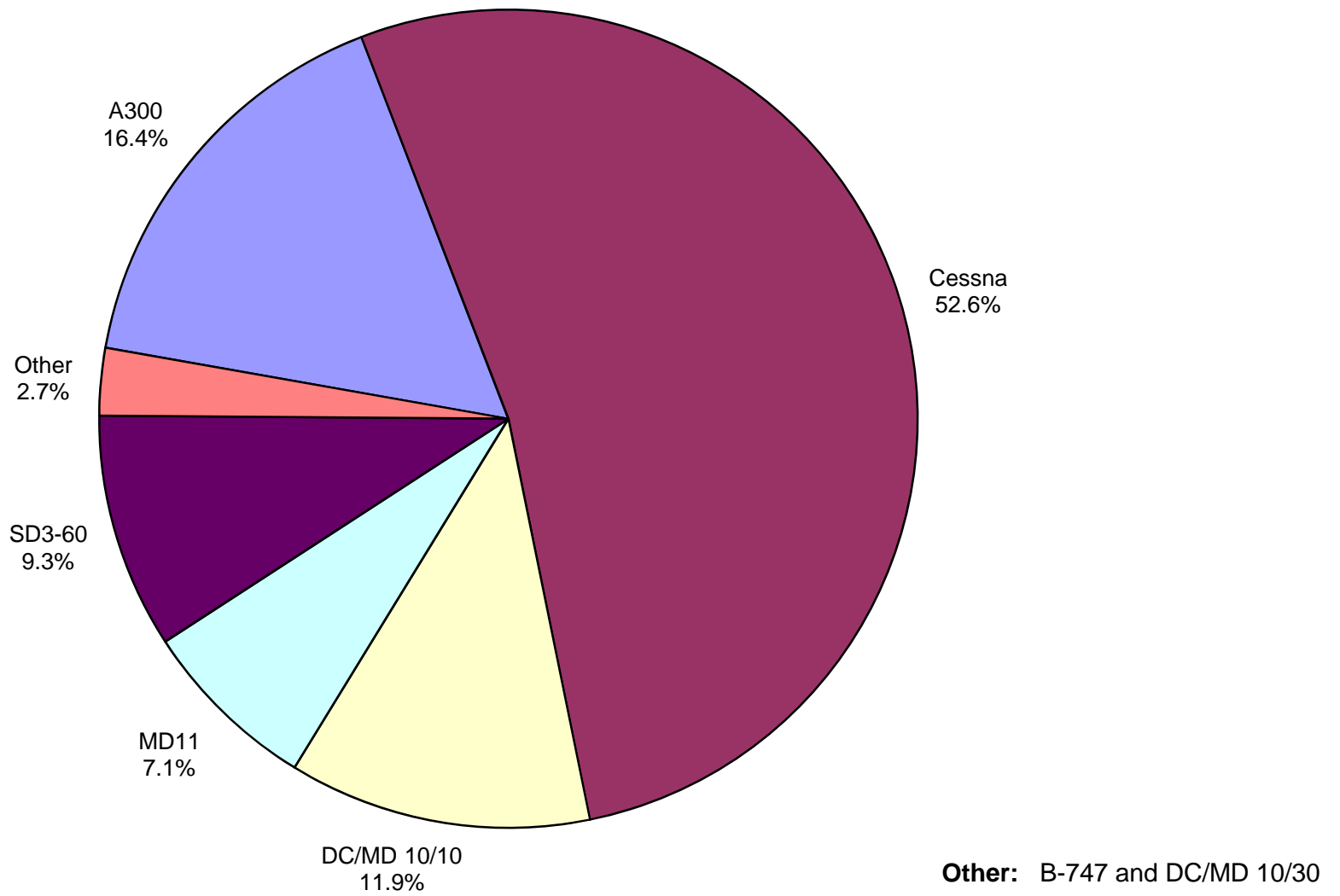


**AUS Scheduled Passenger Aircraft Fleet Mix
September 2014**



Other: A321, B-757, B-787, MD-88 and MD-90

**AUS Scheduled Cargo Aircraft Fleet Mix
September 2014**



Austin-Bergstrom International Airport

PAX Detail Report - September, 2014

Period Company	09/2014	09/2013	YTD		YTD 2014	YTD 2013	2014		2013 Share	Share Share	Diff
			Difference	Change			Difference	Change			
Alaska Airlines, Inc.	9,160	8,856	304	3.4	87,015	85,904	1,111	1.3	1.1	1.2	-0.1
Allegiant Air Charter	0	0	0	0.0	0	1,224	-1,224	-100.0	0.0	0.0	0.0
Allegiant Air, LLC	5,383	0	5,383	0.0	52,122	0	52,122	0.0	0.7	0.0	0.7
American Airlines, Inc.	151,955	146,958	4,997	3.4	1,439,952	1,394,138	45,814	3.3	18.1	18.7	-0.6
Ameristarjet Charter Inc.	0	0	0	0.0	7	96	-89	-92.7	0.0	0.0	0.0
British Airways Plc	10,222	0	10,222	0.0	68,600	0	68,600	0.0	0.9	0.0	0.9
Canadian North, Inc.	0	0	0	0.0	49	0	49	0.0	0.0	0.0	0.0
Continental Airlines	0	0	0	0.0	0	103,392	-103,392	-100.0	0.0	1.4	-1.4
Delta Air Lines	105,425	92,797	12,628	13.6	989,673	904,138	85,535	9.5	12.5	12.1	0.3
Express Jet Airlines, Inc.	0	7,908	-7,908	-100.0	0	46,979	-46,979	-100.0	0.0	0.6	-0.6
Frontier Airlines, Inc.	18,538	17,934	604	3.4	140,701	114,039	26,662	23.4	1.8	1.5	0.2
GoJet Airlines d/b/a United Express	0	12,868	-12,868	-100.0	0	139,517	-139,517	-100.0	0.0	1.9	-1.9
JetBlue Airways Corporation	44,798	45,357	-559	-1.2	448,875	490,938	-42,063	-8.6	5.7	6.6	-0.9
Mesa Airlines Inc - DIP	0	30,142	-30,142	-100.0	0	288,544	-288,544	-100.0	0.0	3.9	-3.9
Miami Air International Inc.	0	0	0	0.0	226	342	-116	-33.9	0.0	0.0	0.0
Republic Airlines, Inc.	182	171	11	6.4	1,060	1,509	-449	-29.8	0.0	0.0	0.0
Shuttle America Corporation	0	18,939	-18,939	-100.0	0	85,595	-85,595	-100.0	0.0	1.2	-1.2
SkyWest Airlines, Inc	0	28,881	-28,881	-100.0	0	346,353	-346,353	-100.0	0.0	4.7	-4.7
Southwest Airlines	317,529	298,464	19,065	6.4	2,976,818	2,894,933	81,885	2.8	37.5	38.9	-1.4
Sun Country Airlines/ MN Airlines, LLC	238	0	238	0.0	1,058	664	394	59.3	0.0	0.0	0.0
Transportes Aeromar S.A. de C.V.	567	0	567	0.0	7,659	0	7,659	0.0	0.1	0.0	0.1
United Airlines, Inc.	144,341	53,988	90,353	167.4	1,297,045	417,552	879,493	210.6	16.3	5.6	10.7
US Airways Group, Inc.	39,669	16,075	23,594	146.8	360,423	93,865	266,558	284.0	4.5	1.3	3.3
Virgin America Inc.	10,251	6,645	3,606	54.3	71,640	30,932	40,708	131.6	0.9	0.4	0.5
Vision Airlines, Inc.	0	0	0	0.0	952	982	-30	-3.1	0.0	0.0	0.0
World Atlantic Airlines	0	0	0	0.0	0	164	-164	-100.0	0.0	0.0	0.0
Report Totals	858,258	785,983	72,275	9.2%	7,943,875	7,441,800	502,075	6.7%			

Statistics Included in Report:

Domestic Passengers: Enplaned Revenue, Deplaned Revenue, Enplaned Non-Revenue, Deplaned Non-Revenue
 International Passengers: Enplaned Revenue, Deplaned Revenue, Enplaned Non-Revenue, Deplaned Non-Revenue

Austin-Bergstrom International Airport

Summary Landing Report

Landing Type: Total

Month	2014		2013		2012		% Change 2014 - 2013		% Change 2013 - 2012	
	Count	Weight	Count	Weight	Count	Weight	Count	Weight	Count	Weight
January	4,213	478,945,673	4,176	469,844,487	4,033	441,029,354	0.89%	1.94%	3.55%	6.53%
February	3,839	437,160,505	3,824	428,117,442	3,892	432,535,353	0.39%	2.11%	-1.75%	-1.02%
March	4,746	552,992,572	4,660	536,989,561	4,372	496,635,886	1.85%	2.98%	6.59%	8.13%
April	4,515	521,133,372	4,425	504,739,959	4,260	479,535,174	2.03%	3.25%	3.87%	5.26%
May	4,749	553,415,664	4,687	545,881,910	4,385	509,470,460	1.32%	1.38%	6.89%	7.15%
June	4,821	569,196,868	4,680	534,286,437	4,425	503,932,220	3.01%	6.53%	5.76%	6.02%
July	5,000	590,375,055	4,788	547,957,989	4,586	524,142,423	4.43%	7.74%	4.40%	4.54%
August	4,752	555,732,827	4,737	541,522,098	4,532	519,056,485	0.32%	2.62%	4.52%	4.33%
September	4,513	539,605,431	4,320	497,853,836	4,181	484,324,879	4.47%	8.39%	3.32%	2.79%
October			4,613	540,694,783	4,424	512,451,397			4.27%	5.51%
November			4,448	517,542,366	4,283	504,246,217			3.85%	2.64%
December			4,534	521,172,463	4,391	498,622,124			3.26%	4.52%
Totals for Selected Period	41,148	4,798,557,967	40,297	4,607,193,719	38,666	4,390,662,234	2.11%	4.15%	4.22%	4.93%
Yearly Totals	41,148	4,798,557,967	53,892	6,186,603,331	51,764	5,905,981,972			4.11%	4.75%