

**Austin-Bergstrom International Airport  
Aviation Activity Report  
Calendar Year 2020 vs 2019**

**Combined Terminals**

|                                              | 1/2020           | 1/2019           | Percent Change | 1/2020 - 1/2020  | 1/2019 - 1/2019  | Percent Change |
|----------------------------------------------|------------------|------------------|----------------|------------------|------------------|----------------|
| <b>ABIA</b>                                  |                  |                  |                |                  |                  |                |
| <b>Total Passenger Activity</b>              |                  |                  |                |                  |                  |                |
| Domestic Enplaned Revenue                    | 575,807          | 503,462          | 14.37%         | 575,807          | 503,462          | 14.37%         |
| Domestic Deplaned Revenue                    | 595,321          | 519,901          | 14.51%         | 595,321          | 519,901          | 14.51%         |
| International Enplaned Revenue               | 12,391           | 9,218            | 34.42%         | 12,391           | 9,218            | 34.42%         |
| International Deplaned Revenue               | 13,958           | 11,033           | 26.51%         | 13,958           | 11,033           | 26.51%         |
| Domestic Enplaned Non-Revenue                | 14,126           | 13,517           | 4.51%          | 14,126           | 13,517           | 4.51%          |
| Domestic Deplaned Non-Revenue                | 12,918           | 13,077           | -1.22%         | 12,918           | 13,077           | -1.22%         |
| International Enplaned Non-Revenue           | 124              | 77               | 61.04%         | 124              | 77               | 61.04%         |
| International Deplaned Non-Revenue           | 104              | 77               | 35.06%         | 104              | 77               | 35.06%         |
| Intl Enplaned Pre-Cleared Revenue            | 2,026            | 2,005            | 1.05%          | 2,026            | 2,005            | 1.05%          |
| Intl Deplaned Pre-Cleared Revenue            | 1,886            | 2,215            | -14.85%        | 1,886            | 2,215            | -14.85%        |
| Intl Enplaned Pre-Cleared Non-Revenue        | 39               | 26               | 50.00%         | 39               | 26               | 50.00%         |
| Intl Deplaned Pre-Cleared Non-Revenue        | 45               | 29               | 55.17%         | 45               | 29               | 55.17%         |
| South Terminal Domestic Enplaned Revenue     | 23,804           | 26,833           | -11.29%        | 23,804           | 26,833           | -11.29%        |
| South Terminal Domestic Deplaned Revenue     | 25,744           | 27,791           | -7.37%         | 25,744           | 27,791           | -7.37%         |
| South Terminal Domestic Enplaned Non-Revenue | 86               | 106              | -18.87%        | 86               | 106              | -18.87%        |
| South Terminal Domestic Deplaned Non-Revenue | 94               | 115              | -18.26%        | 94               | 115              | -18.26%        |
| <b>ABIA Passenger Totals</b>                 | <b>1,278,473</b> | <b>1,129,482</b> | <b>13.19</b>   | <b>1,278,473</b> | <b>1,129,482</b> | <b>13.19</b>   |
| <i>ABIA Enplaned Passenger Totals</i>        | <i>628,403</i>   | <i>555,244</i>   | <i>13.18</i>   | <i>628,403</i>   | <i>555,244</i>   | <i>13.18</i>   |
| <i>ABIA Deplaned Passenger Totals</i>        | <i>650,070</i>   | <i>574,238</i>   | <i>13.21</i>   | <i>650,070</i>   | <i>574,238</i>   | <i>13.21</i>   |
| <i>ABIA Domestic Passenger Totals</i>        | <i>1,247,900</i> | <i>1,104,802</i> | <i>12.95</i>   | <i>1,247,900</i> | <i>1,104,802</i> | <i>12.95</i>   |
| <i>ABIA International Passenger Totals</i>   | <i>30,573</i>    | <i>24,680</i>    | <i>23.88</i>   | <i>30,573</i>    | <i>24,680</i>    | <i>23.88</i>   |

**CURRENT PASSENGER RECORD = 1,643,016 RECORD SET = JULY 2019**

|                                  |               |               |               |               |               |               |
|----------------------------------|---------------|---------------|---------------|---------------|---------------|---------------|
| <b>Total Aircraft Operations</b> |               |               |               |               |               |               |
| Air Carrier                      | 11,320        | 10,469        | 8.13%         | 11,320        | 10,469        | 8.13%         |
| Commuter & Air Taxi              | 1,314         | 1,288         | 2.02%         | 1,314         | 1,288         | 2.02%         |
| Military                         | 435           | 877           | -50.40%       | 435           | 877           | -50.40%       |
| General Aviation                 |               |               |               |               |               |               |
| Itinerant                        | 3,254         | 3,675         | -11.46%       | 3,254         | 3,675         | -11.46%       |
| Local                            | 56            | 66            | -15.15%       | 56            | 66            | -15.15%       |
| Total G.A.                       | <b>3,310</b>  | <b>3,741</b>  | <b>-11.52</b> | <b>3,310</b>  | <b>3,741</b>  | <b>-11.52</b> |
| <b>Total Operations</b>          | <b>16,379</b> | <b>16,375</b> | <b>0.02</b>   | <b>16,379</b> | <b>16,375</b> | <b>0.02</b>   |

**Austin-Bergstrom International Airport  
Aviation Activity Report  
Calendar Year 2020 vs 2019**

**By Terminal**

|                                                 | 1/2020           | 1/2019           | Percent Change | 1/2020 - 1/2020  | 1/2019 - 1/2019  | Percent Change |
|-------------------------------------------------|------------------|------------------|----------------|------------------|------------------|----------------|
| <b><u>Barbara Jordan Terminal (BJT)</u></b>     |                  |                  |                |                  |                  |                |
| <b>Passenger Activity</b>                       |                  |                  |                |                  |                  |                |
| Domestic Enplaned Revenue                       | 575,807          | 503,462          | 0.14           | 575,807          | 503,462          | 0.14           |
| Domestic Deplaned Revenue                       | 595,321          | 519,901          | 0.15           | 595,321          | 519,901          | 0.15           |
| International Enplaned Revenue                  | 12,391           | 9,218            | 0.34           | 12,391           | 9,218            | 0.34           |
| International Deplaned Revenue                  | 13,958           | 11,033           | 0.27           | 13,958           | 11,033           | 0.27           |
| Domestic Enplaned Non-Revenue                   | 14,126           | 13,517           | 0.05           | 14,126           | 13,517           | 0.05           |
| Domestic Deplaned Non-Revenue                   | 12,918           | 13,077           | -0.01          | 12,918           | 13,077           | -0.01          |
| International Enplaned Non-Revenue              | 124              | 77               | 0.61           | 124              | 77               | 0.61           |
| International Deplaned Non-Revenue              | 104              | 77               | 0.35           | 104              | 77               | 0.35           |
| Intl Enplaned Pre-Cleared Revenue               | 2,026            | 2,005            | 0.01           | 2,026            | 2,005            | 0.01           |
| Intl Deplaned Pre-Cleared Revenue               | 1,886            | 2,215            | -0.15          | 1,886            | 2,215            | -0.15          |
| Intl Enplaned Pre-Cleared Non-Revenue           | 39               | 26               | 0.50           | 39               | 26               | 0.50           |
| Intl Deplaned Pre-Cleared Non-Revenue           | 45               | 29               | 0.55           | 45               | 29               | 0.55           |
| <b>Barbara Jordan Terminal Passenger Totals</b> | <b>1,228,745</b> | <b>1,074,637</b> | <b>14.34</b>   | <b>1,228,745</b> | <b>1,074,637</b> | <b>14.34</b>   |
| <i>BJT Enplaned Passenger Totals</i>            | <i>604,513</i>   | <i>528,305</i>   | <i>14.43</i>   | <i>604,513</i>   | <i>528,305</i>   | <i>14.43</i>   |
| <i>BJT Deplaned Passenger Totals</i>            | <i>624,232</i>   | <i>546,332</i>   | <i>14.26</i>   | <i>624,232</i>   | <i>546,332</i>   | <i>14.26</i>   |
| <i>BJT Domestic Passenger Totals</i>            | <i>1,198,172</i> | <i>1,049,957</i> | <i>14.12</i>   | <i>1,198,172</i> | <i>1,049,957</i> | <i>14.12</i>   |
| <i>BJT International Passenger Totals</i>       | <i>30,573</i>    | <i>24,680</i>    | <i>23.88</i>   | <i>30,573</i>    | <i>24,680</i>    | <i>23.88</i>   |
| <br>                                            |                  |                  |                |                  |                  |                |
| <b><u>South Terminal (ST)</u></b>               |                  |                  |                |                  |                  |                |
| <b>Passenger Activity</b>                       |                  |                  |                |                  |                  |                |
| South Terminal Domestic Enplaned Revenue        | 23,804           | 26,833           | -0.11          | 23,804           | 26,833           | -0.11          |
| South Terminal Domestic Deplaned Revenue        | 25,744           | 27,791           | -0.07          | 25,744           | 27,791           | -0.07          |
| South Terminal Domestic Enplaned Non-Revenue    | 86               | 106              | -0.19          | 86               | 106              | -0.19          |
| South Terminal Domestic Deplaned Non-Revenue    | 94               | 115              | -0.18          | 94               | 115              | -0.18          |
| <b>South Terminal Passenger Totals</b>          | <b>49,728</b>    | <b>54,845</b>    | <b>-9.33</b>   | <b>49,728</b>    | <b>54,845</b>    | <b>-9.33</b>   |
| <i>ST Enplaned Passenger Totals</i>             | <i>23,890</i>    | <i>26,939</i>    | <i>-11.32</i>  | <i>23,890</i>    | <i>26,939</i>    | <i>-11.32</i>  |
| <i>ST Deplaned Passenger Totals</i>             | <i>25,838</i>    | <i>27,906</i>    | <i>-7.41</i>   | <i>25,838</i>    | <i>27,906</i>    | <i>-7.41</i>   |

**Austin-Bergstrom International Airport  
Aviation Activity Report  
Calendar Year 2020 vs 2019**

|                                                  | 1/2020            | 1/2019            | Percent Change | 1/2020 - 1/2020   | 1/2019 - 1/2019   | Percent Change |
|--------------------------------------------------|-------------------|-------------------|----------------|-------------------|-------------------|----------------|
| <b><u>Total Cargo Activity</u></b>               |                   |                   |                |                   |                   |                |
| <b>Mail</b>                                      |                   |                   |                |                   |                   |                |
| Domestic Enplaned Mail                           | 281,638           | 193,463           | 45.58%         | 281,638           | 193,463           | 45.58%         |
| Domestic Deplaned Mail                           | 809,745           | 652,871           | 24.03%         | 809,745           | 652,871           | 24.03%         |
| International Enplaned Mail                      | 0                 | 0                 | 0.000%         | 0                 | 0                 | 0.00%          |
| International Deplaned Mail                      | 0                 | 110,830           | -100.00%       | 0                 | 110,830           | -100.00%       |
| South Terminal-Domestic Enplaned Mail            | 0                 | 0                 | 0.00           | 0                 | 0                 | 0.00           |
| South Terminal-Domestic Deplaned Mail            | 0                 | 0                 | 0.00           | 0                 | 0                 | 0.00           |
| <b>Mail Totals</b>                               | <b>1,091,383</b>  | <b>957,164</b>    | <b>14.02</b>   | <b>1,091,383</b>  | <b>957,164</b>    | <b>14.02</b>   |
| <b>Cargo</b>                                     |                   |                   |                |                   |                   |                |
| Domestic Enplaned Cargo                          | 4,966,817         | 4,822,520         | 2.99%          | 4,966,817         | 4,822,520         | 2.99%          |
| Domestic Deplaned Cargo                          | 7,168,641         | 7,037,778         | 1.86%          | 7,168,641         | 7,037,778         | 1.86%          |
| International Enplaned Cargo                     | 245,172           | 206,666           | 18.63%         | 245,172           | 206,666           | 18.63%         |
| International Deplaned Cargo                     | 129,243           | 103,780           | 24.54%         | 129,243           | 103,780           | 24.54%         |
| South Terminal-Domestic Enplaned Cargo           | 0                 | 0                 | 0.00           | 0                 | 0                 | 0.00           |
| South Terminal-Domestic Deplaned Cargo           | 0                 | 0                 | 0.00           | 0                 | 0                 | 0.00           |
| <b>Cargo Totals</b>                              | <b>12,509,873</b> | <b>12,170,744</b> | <b>2.79</b>    | <b>12,509,873</b> | <b>12,170,744</b> | <b>2.79</b>    |
| <b>Belly Freight</b>                             |                   |                   |                |                   |                   |                |
| Domestic Enplaned Belly Freight                  | 248,640           | 294,239           | -15.50%        | 248,640           | 294,239           | -15.50%        |
| Domestic Deplaned Belly Freight                  | 474,866           | 480,129           | -1.10%         | 474,866           | 480,129           | -1.10%         |
| International Enplaned Belly Freight             | 293,349           | 224,105           | 30.90%         | 293,349           | 224,105           | 30.90%         |
| International Deplaned Belly Freight             | 613,008           | 598,473           | 2.43%          | 613,008           | 598,473           | 2.43%          |
| South Terminal-Domestic Enplaned Belly Frght     | 0                 | 0                 | 0.00           | 0                 | 0                 | 0.00           |
| South Terminal-Domestic Deplaned Belly Frght     | 0                 | 0                 | 0.00           | 0                 | 0                 | 0.00           |
| <b>Belly Freight Totals</b>                      | <b>1,629,863</b>  | <b>1,596,946</b>  | <b>2.06</b>    | <b>1,629,863</b>  | <b>1,596,946</b>  | <b>2.06</b>    |
| <b>Cargo Totals (Mail, Cargo, Belly Freight)</b> | <b>15,231,119</b> | <b>14,724,854</b> | <b>3.44</b>    | <b>15,231,119</b> | <b>14,724,854</b> | <b>3.44</b>    |
| <i>Enplaned Cargo Totals</i>                     | <i>6,035,616</i>  | <i>5,740,993</i>  | <i>5.13</i>    | <i>6,035,616</i>  | <i>5,740,993</i>  | <i>5.13</i>    |
| <i>Deplaned Cargo Totals</i>                     | <i>9,195,503</i>  | <i>8,983,861</i>  | <i>2.36</i>    | <i>9,195,503</i>  | <i>8,983,861</i>  | <i>2.36</i>    |
| <i>Domestic Cargo Totals</i>                     | <i>13,950,347</i> | <i>13,481,000</i> | <i>3.48</i>    | <i>13,950,347</i> | <i>13,481,000</i> | <i>3.48</i>    |
| <i>International Cargo Totals</i>                | <i>1,280,772</i>  | <i>1,243,854</i>  | <i>2.97</i>    | <i>1,280,772</i>  | <i>1,243,854</i>  | <i>2.97</i>    |

**CURRENT CARGO RECORD = 40,215,518**

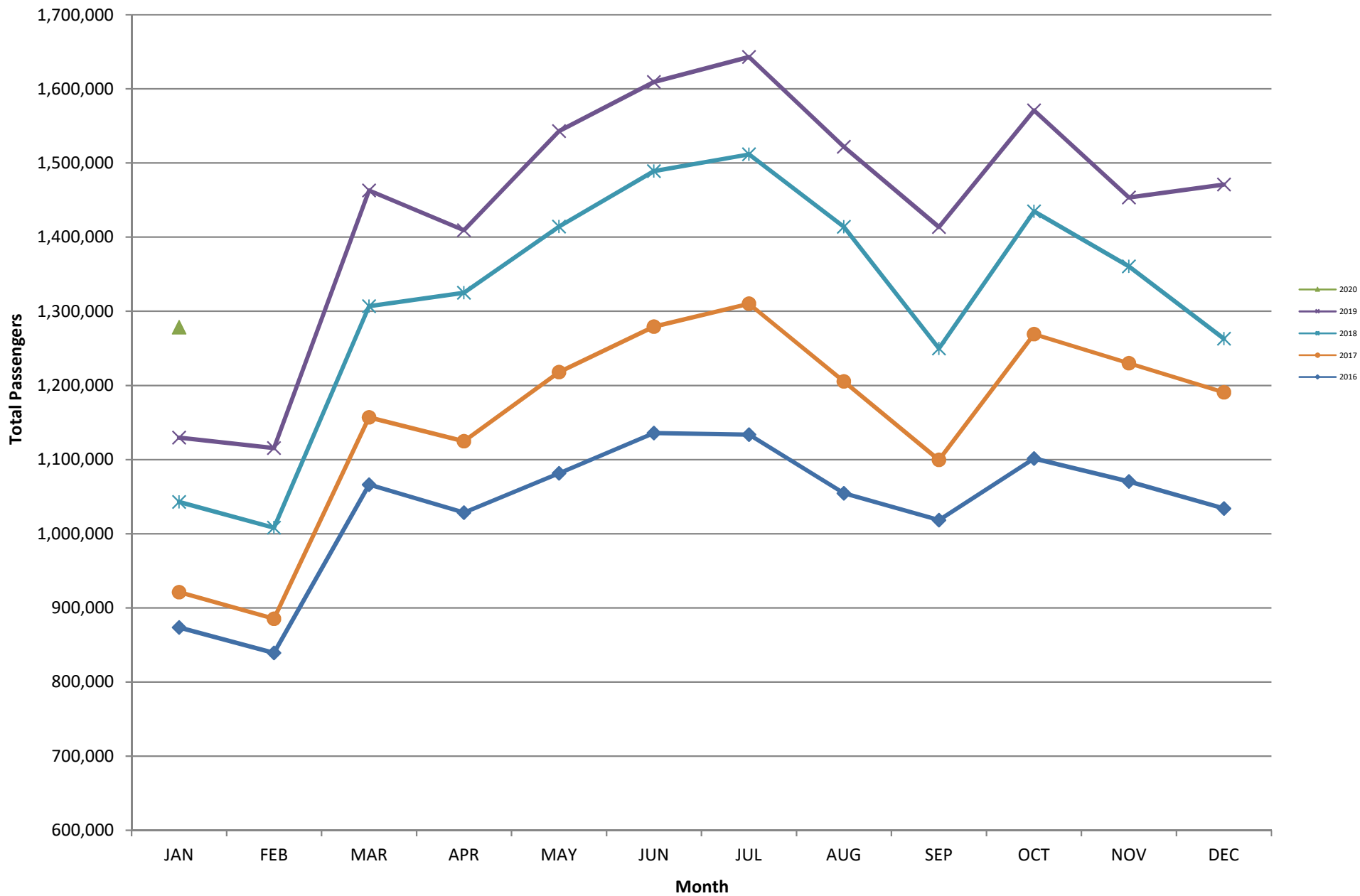
**RECORD SET = MARCH 2001**

**AUS – Airline Codes**  
January 2020

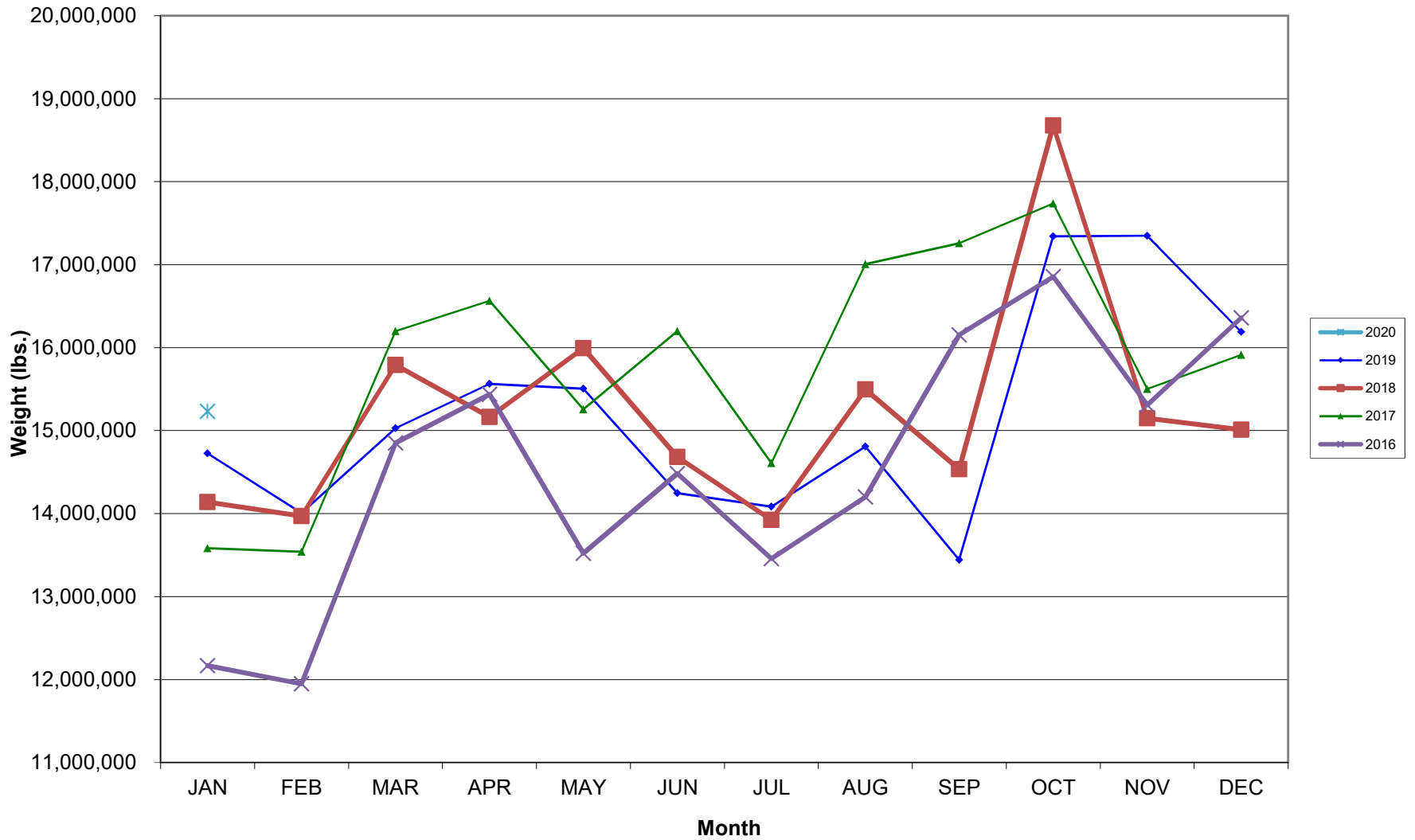
| <b><u>Code</u></b> | <b><u>Carrier</u></b>                                   |
|--------------------|---------------------------------------------------------|
| AM                 | Aerovias de Mexico S.A. de C.V. dba AeroMexico Airlines |
| AC                 | Air Canada                                              |
| AS                 | Alaska Airlines, Inc.                                   |
| G4                 | Allegiant Air, LLC                                      |
| AA                 | American Airlines, Inc.                                 |
| BA                 | British Airways Plc                                     |
| DL                 | Delta Airlines                                          |
| LH                 | Deutsche Lufthansa AG                                   |
| F9                 | Frontier Airlines                                       |
| B6                 | JetBlue Airways Corp.                                   |
| WN                 | Southwest Airlines                                      |
| NK                 | Spirit Airlines                                         |
| SY                 | Sun Country Airlines (Charters)                         |
| SWQ                | Swift Air, LLC                                          |
| UA                 | United Airlines, Inc.                                   |

# AUSTIN PASSENGER TRAFFIC

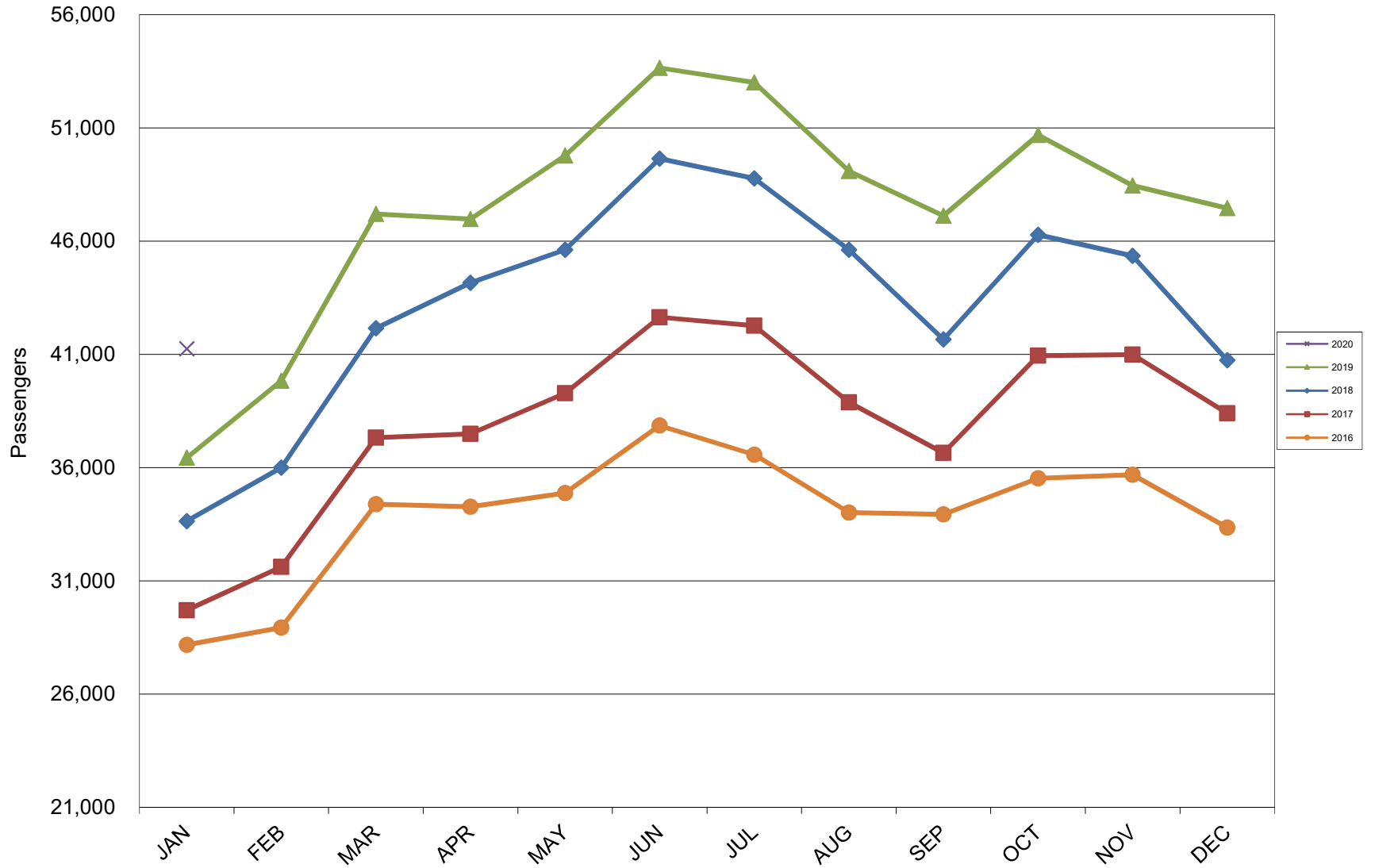
## 5 Year Trend



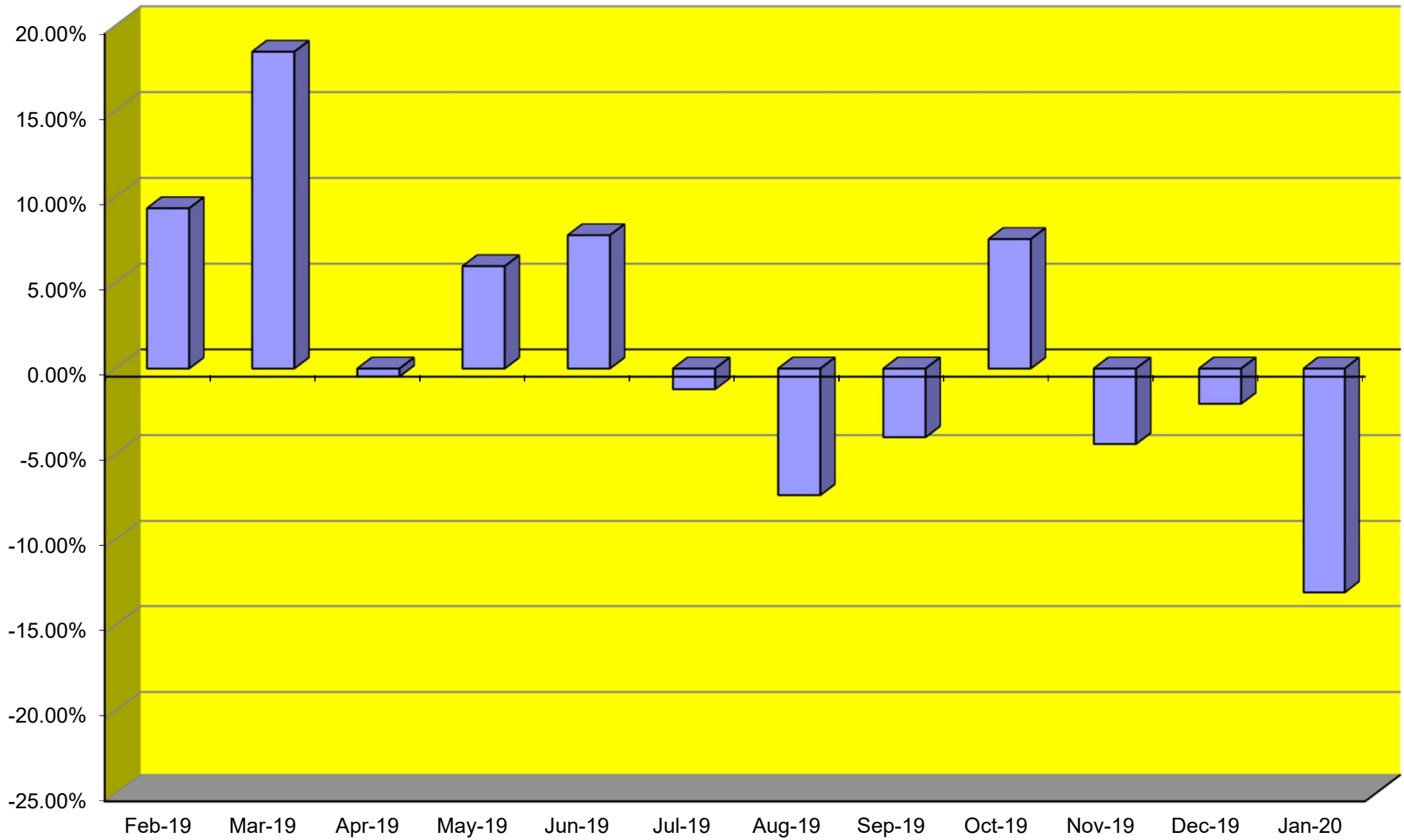
### TOTAL CARGO POUNDAGE - AUSTIN, TEXAS



### Average Daily Passengers

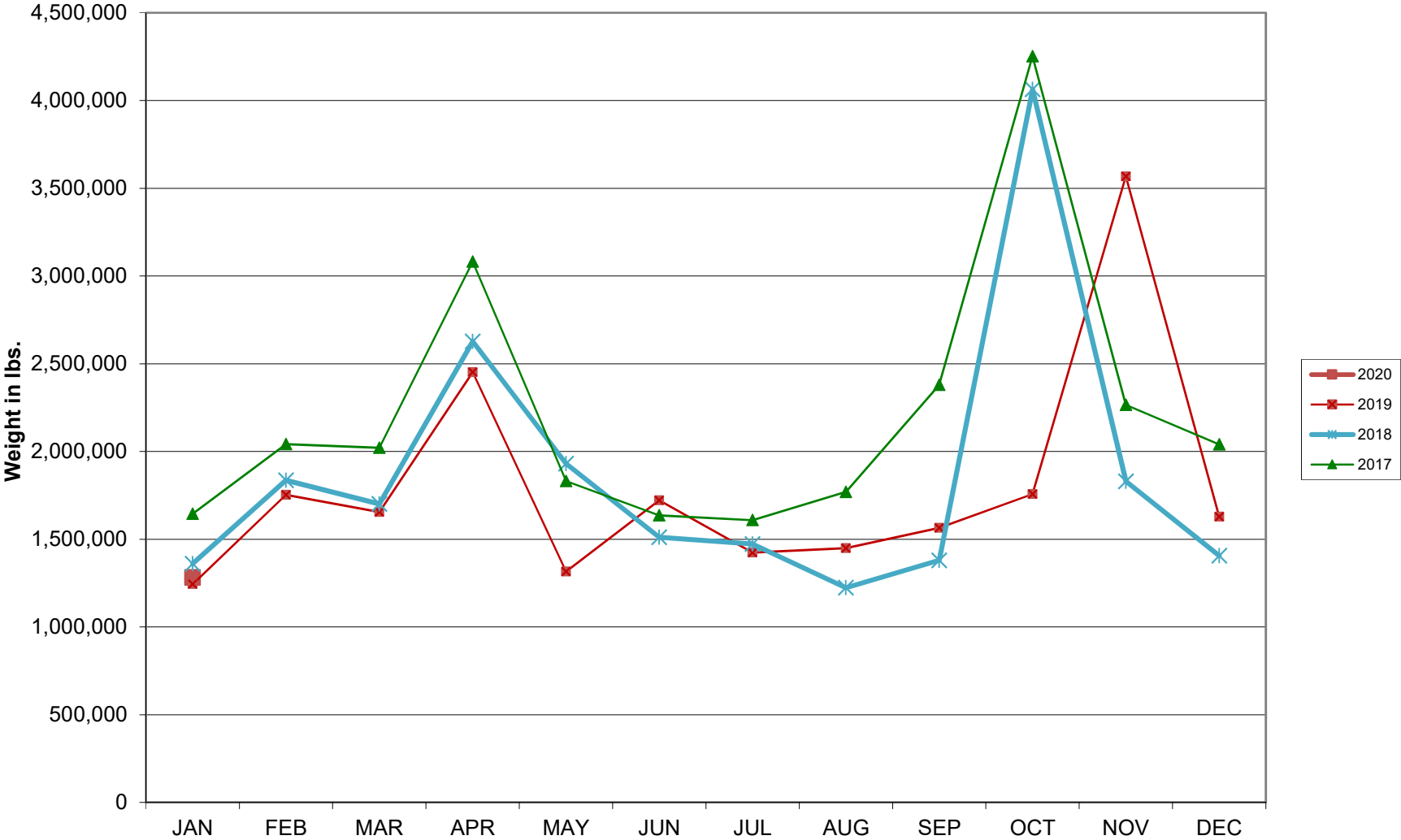


**Monthly % Change in Average Daily Passengers**

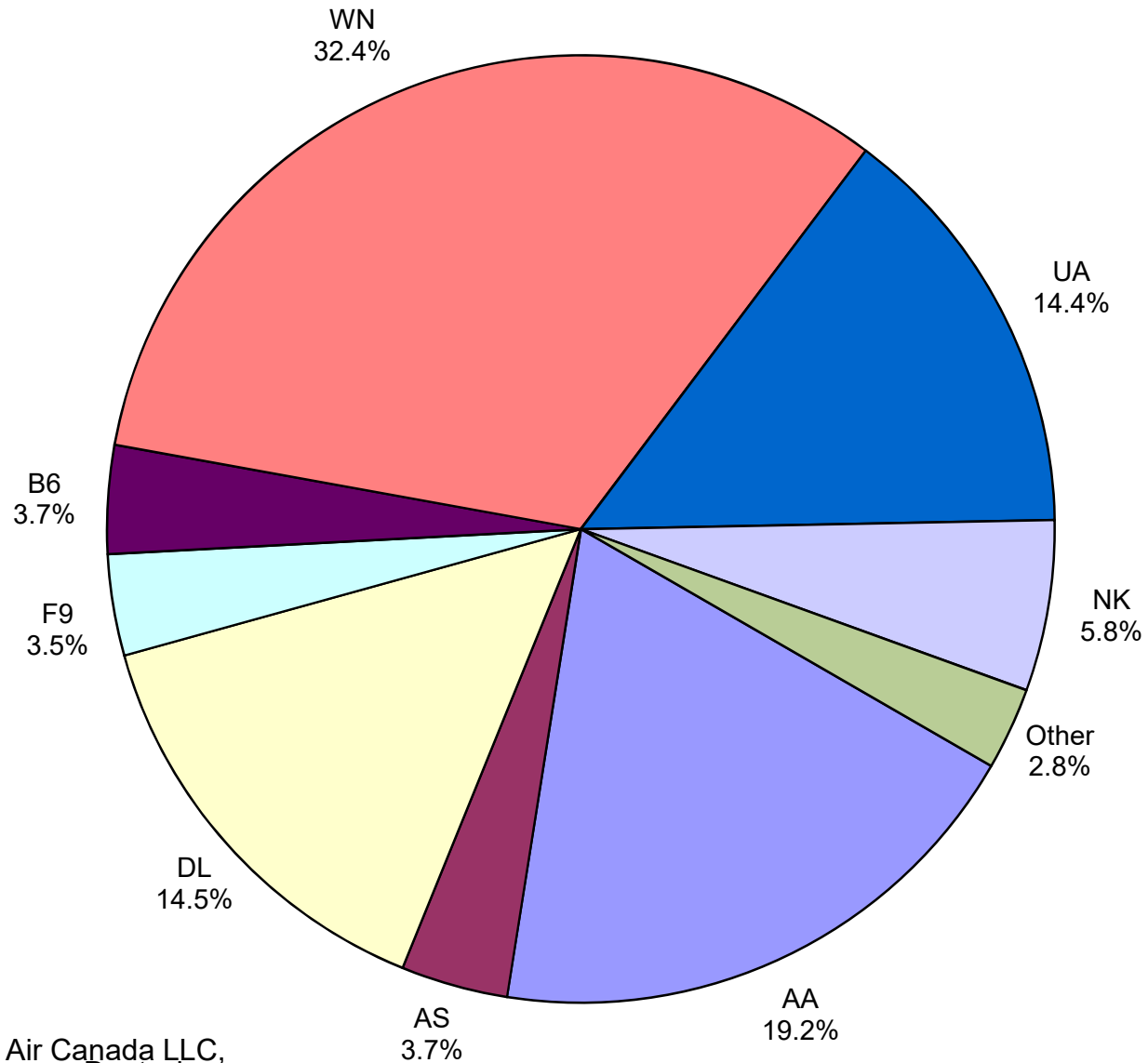




# HISTORY OF INTERNATIONAL AIR CARGO



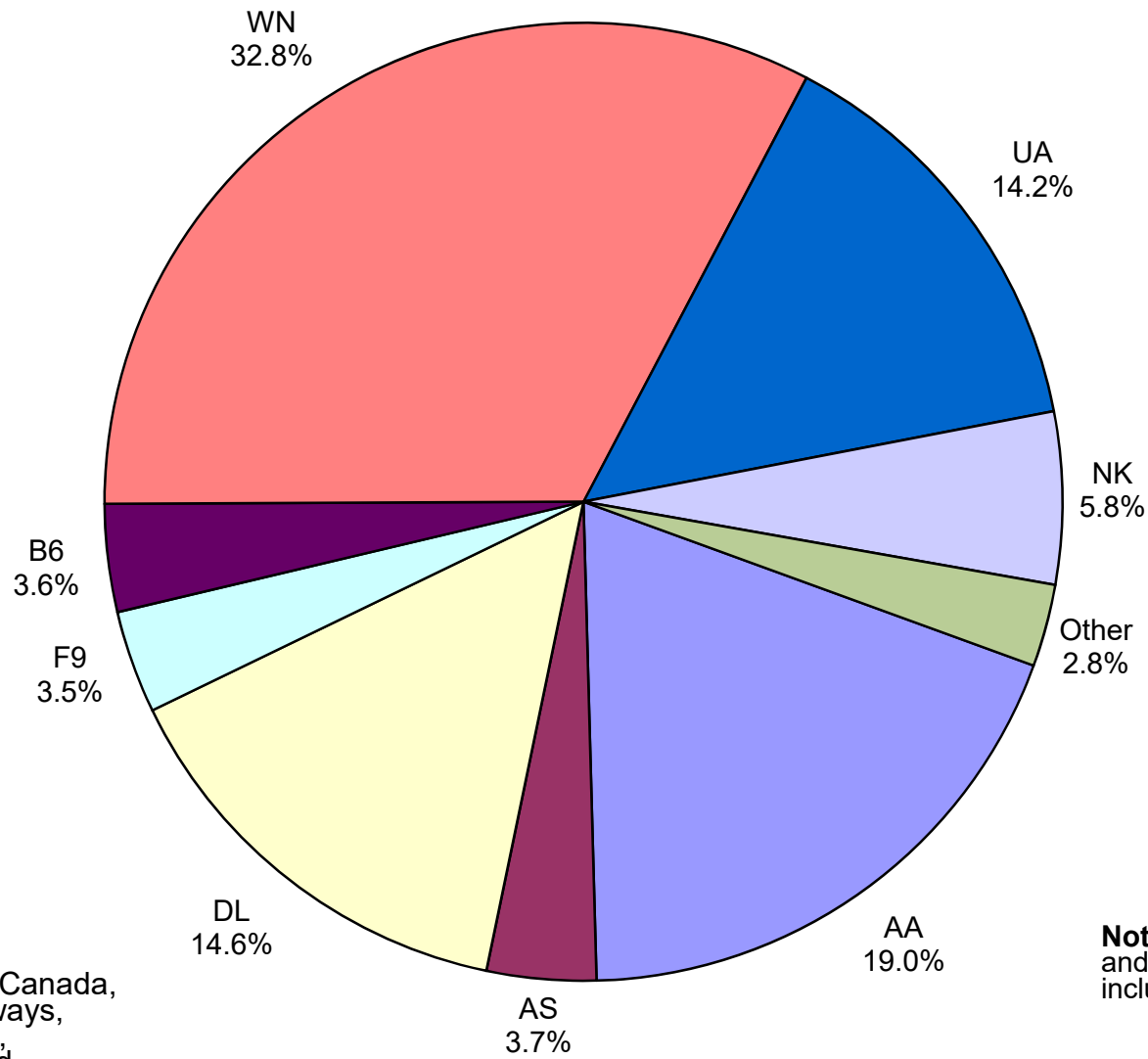
# Total Passengers January 2020



**Other:** Aeromexico, Air Canada LLC, Allegiant Air, British Airways, Deutsche Lufthansa AG, Sun Country and Swift Air, LLC

**Note:** American, Delta and United Airlines percentages include Affiliates.

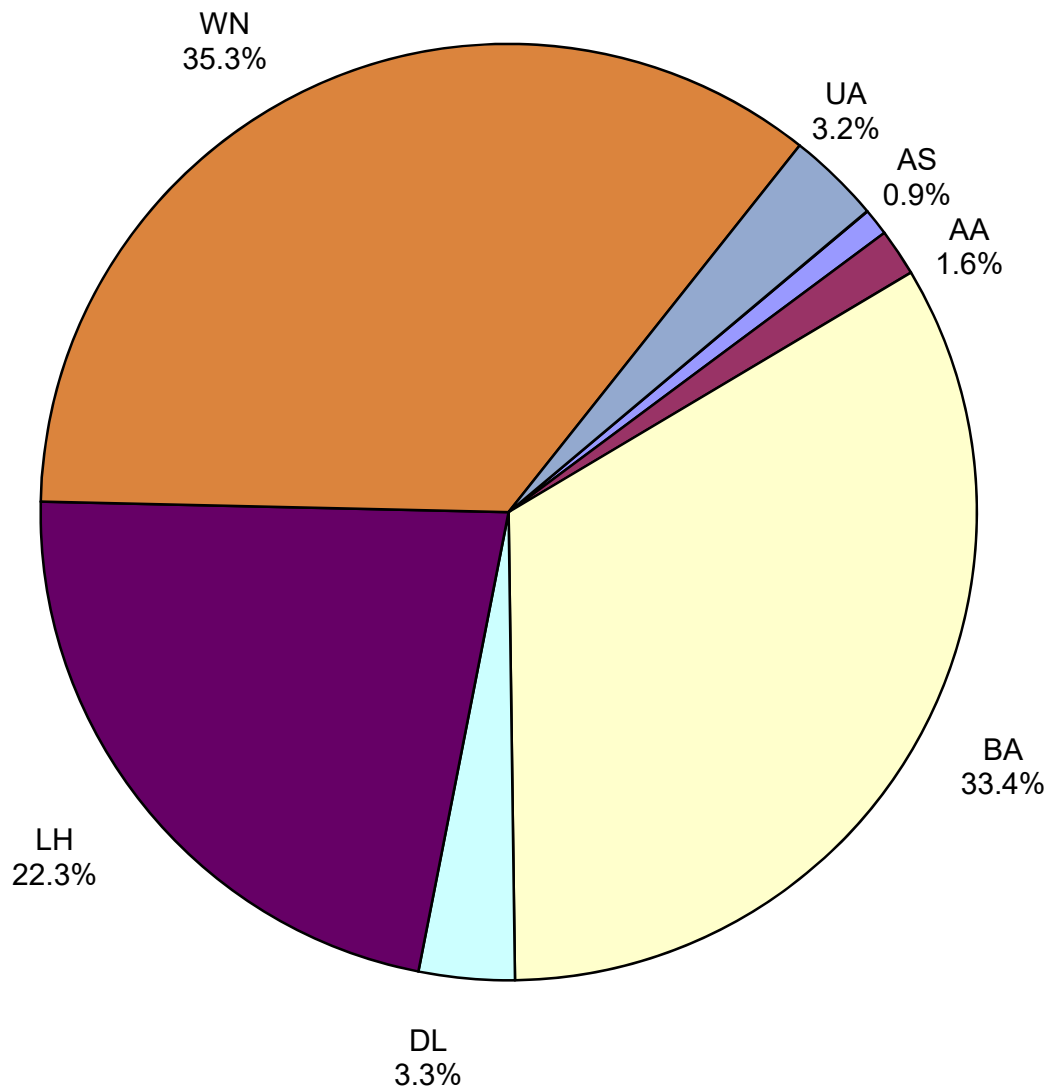
**All Passenger Carriers  
Enplaned Revenue Passengers  
January 2020**



**Other:** Aeromexico, Air Canada, Allegiant Air, British Airways, Deutsche Lufthansa AG, Sun Country Airlines and Swift Air, LLC

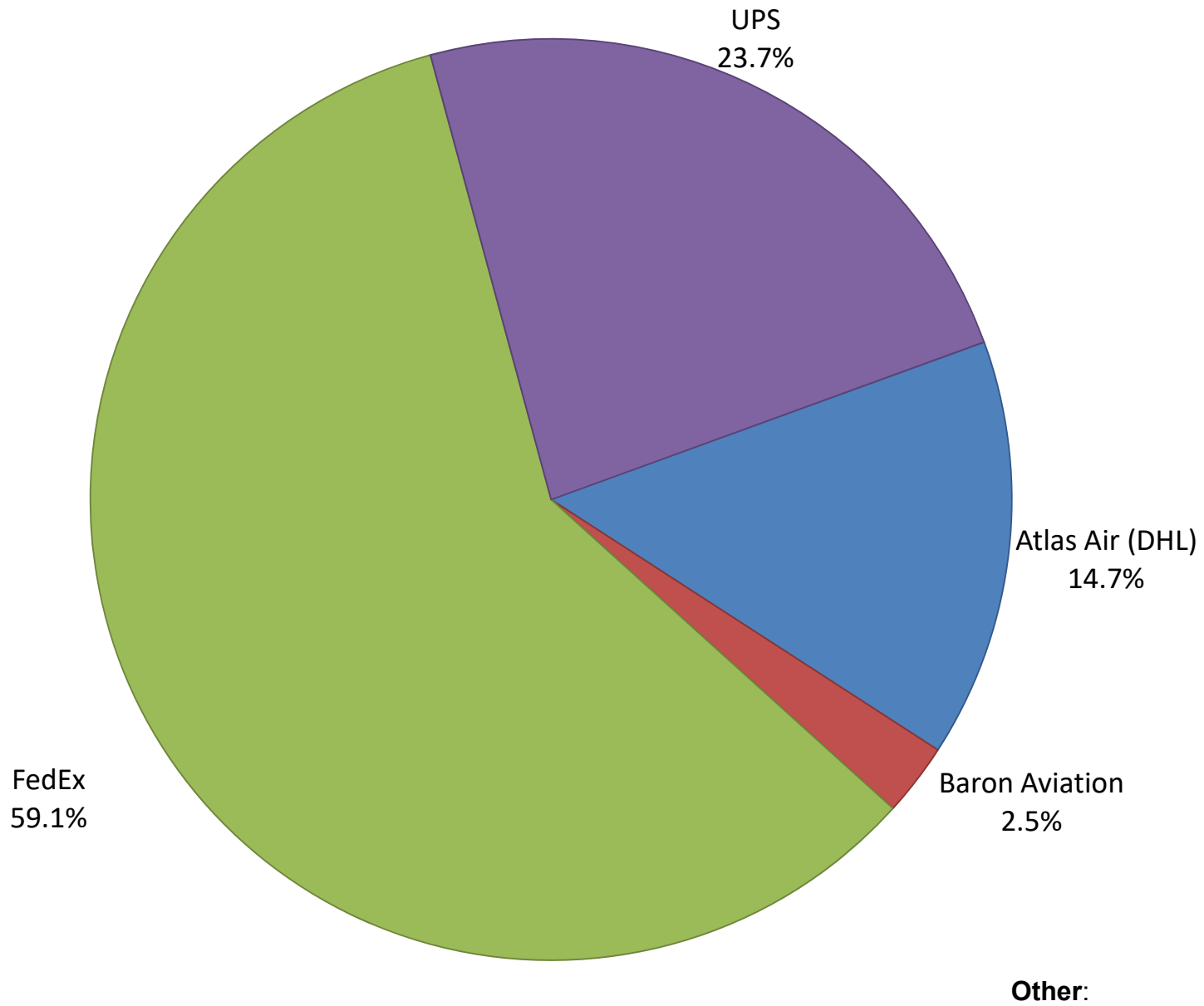
**Note:** American/US Airways, Delta and United Airlines percentages include Affiliates.

**AUS Belly Freight Market Shares  
January 2020**

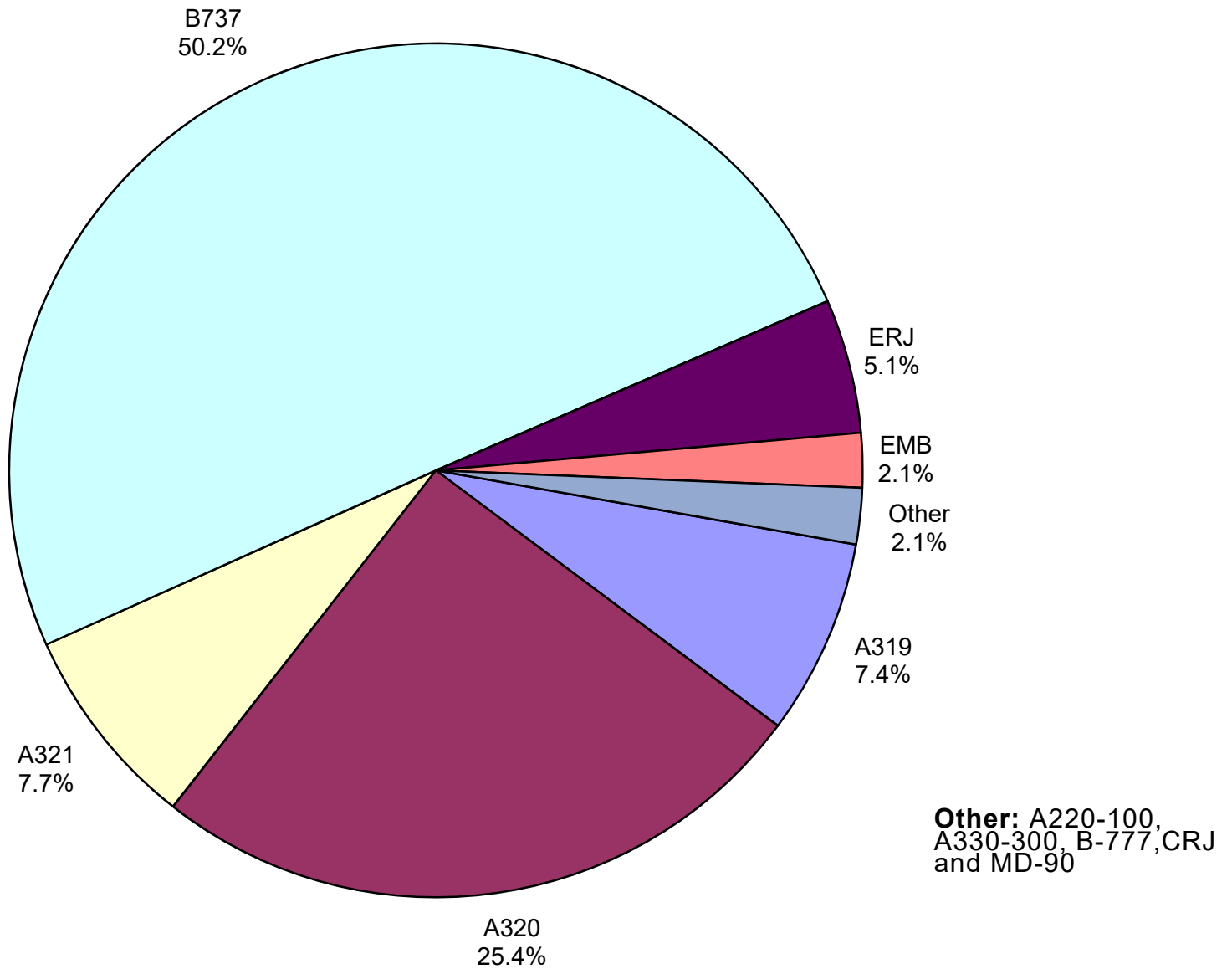


**Other =**

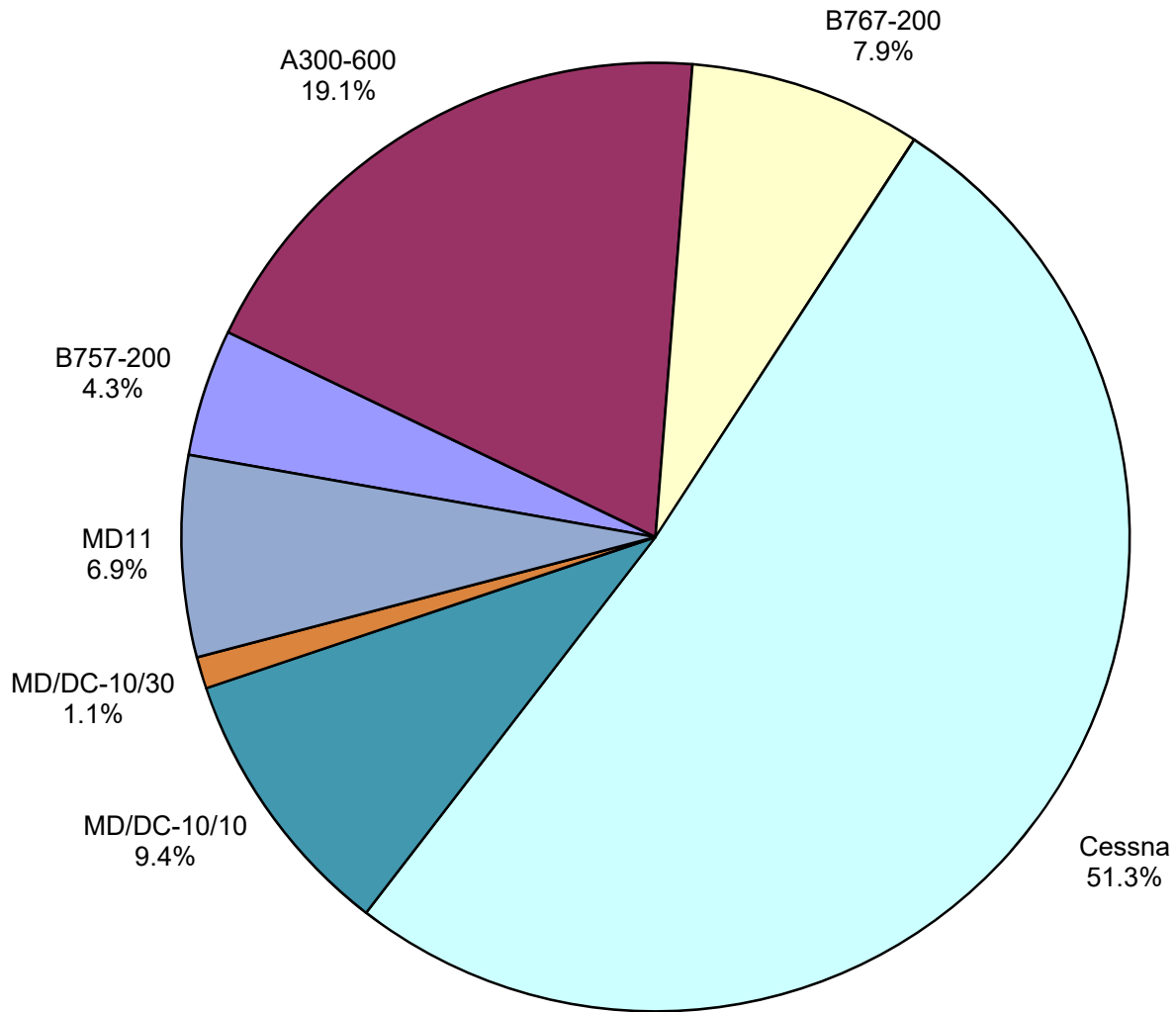
# Air Cargo Market Share January 2020



**AUS Scheduled Passenger Aircraft Fleet Mix  
January 2020**



**AUS Scheduled Cargo Aircraft Fleet Mix  
January 2020**



## Austin-Bergstrom International Airport Pax Detail Report - January, 2020

| Company                                                    | Period           |                  |                |              | YTD              |                  |                |              | 2020 Share    | 2019 Share   | Share Diff |
|------------------------------------------------------------|------------------|------------------|----------------|--------------|------------------|------------------|----------------|--------------|---------------|--------------|------------|
|                                                            | 1/2020           | 1/2019           | Difference     | Change       | YTD 2020         | YTD 2019         | Difference     | Change       |               |              |            |
| Aerovias de Mexico S.A. de C.V.                            | 4,145            | 3,243            | 902            | 27.8         | 4,145            | 3,243            | 902            | 27.8         | 0.3           | 0.3          | 0.0        |
| Air Canada                                                 | 3,996            | 4,275            | -279           | -6.5         | 3,996            | 4,275            | -279           | -6.5         | 0.3           | 0.4          | -0.1       |
| Alaska Airlines INC                                        | 46,698           | 43,263           | 3,435          | 7.9          | 46,698           | 43,263           | 3,435          | 7.9          | 3.7           | 3.8          | -0.1       |
| Allegiant Air LLC                                          | 5,521            | 8,470            | -2,949         | -34.8        | 5,521            | 8,470            | -2,949         | -34.8        | 0.4           | 0.7          | -0.3       |
| American Airlines INC                                      | 244,928          | 233,799          | 11,129         | 4.8          | 244,928          | 233,799          | 11,129         | 4.8          | 19.2          | 20.7         | -1.5       |
| British Airways PLC                                        | 13,690           | 12,835           | 855            | 6.7          | 13,690           | 12,835           | 855            | 6.7          | 1.1           | 1.1          | 0.0        |
| Concesionaria Vuela Compañía de Aviación, S.A.P.I. de C.V. | 0                | 434              | -434           | -100.0       | 0                | 434              | -434           | -100.0       | 0.0           | 0.0          | 0.0        |
| Delta Air Lines                                            | 186,057          | 146,730          | 39,327         | 26.8         | 186,057          | 146,730          | 39,327         | 26.8         | 14.6          | 13.0         | 1.6        |
| Deutsche Lufthansa AG                                      | 7,564            | 0                | 7,564          | 0.0          | 7,564            | 0                | 7,564          | 0.0          | 0.6           | 0.0          | 0.6        |
| Frontier Airlines INC                                      | 44,207           | 45,861           | -1,654         | -3.6         | 44,207           | 45,861           | -1,654         | -3.6         | 3.5           | 4.1          | -0.6       |
| JetBlue Airways Corporation                                | 47,235           | 41,896           | 5,339          | 12.7         | 47,235           | 41,896           | 5,339          | 12.7         | 3.7           | 3.7          | 0.0        |
| Southwest Airlines                                         | 414,495          | 416,721          | -2,226         | -0.5         | 414,495          | 416,721          | -2,226         | -0.5         | 32.4          | 36.9         | -4.5       |
| Spirit Airlines Inc                                        | 74,516           | 0                | 74,516         | 0.0          | 74,516           | 0                | 74,516         | 0.0          | 5.8           | 0.0          | 5.8        |
| Sun Country Airlines/MN Airlines LLC                       | 227              | 590              | -363           | -61.5        | 227              | 590              | -363           | -61.5        | 0.0           | 0.1          | -0.1       |
| Swift Air LLC                                              | 745              | 403              | 342            | 84.9         | 745              | 403              | 342            | 84.9         | 0.1           | 0.0          | 0.1        |
| United Airlines INC                                        | 184,449          | 170,448          | 14,001         | 8.2          | 184,449          | 170,448          | 14,001         | 8.2          | 14.4          | 15.1         | -0.7       |
| VIA Airlines, INC                                          | 0                | 514              | -514           | -100.0       | 0                | 514              | -514           | -100.0       | 0.0           | 0.0          | 0.0        |
| <b>Report Totals</b>                                       | <b>1,278,473</b> | <b>1,129,482</b> | <b>148,991</b> | <b>13.2%</b> | <b>1,278,473</b> | <b>1,129,482</b> | <b>148,991</b> | <b>13.2%</b> | <b>100.1%</b> | <b>99.9%</b> |            |

### Statistics Included in Report:

Domestic Passengers: Enplaned Revenue, Deplaned Revenue, Enplaned Non-Revenue, Deplaned Non-Revenue  
International Passengers: Enplaned Revenue, Deplaned Revenue, Enplaned Non-Revenue, Deplaned Non-Revenue  
International Pre-Cleared Passengers: Enplaned Revenue, Deplaned Revenue, Enplaned Non-Revenue, Deplaned Non-Revenue  
South Terminal Domestic Passengers: Enplaned Revenue, Deplaned Revenue, Enplaned Non-Revenue, Deplaned Non-Revenue



# Austin-Bergstrom International Airport Summary Landings Report

**Landing Type: Total**

| Month                             | 2020  |             | 2019   |                | 2018   |               | % Change 2020- 2019 |          | % Change 2019- 2018 |        |
|-----------------------------------|-------|-------------|--------|----------------|--------|---------------|---------------------|----------|---------------------|--------|
|                                   | Count | Weight      | Count  | Weight         | Count  | Weight        | Count               | Weight   | Count               | Weight |
| January                           | 5,762 | 812,175,948 | 5,348  | 733,746,679    | 5,086  | 688,923,110   | 7.98%               | 10.62%   | 4.78%               | 4.93%  |
| February                          | 0     | 0           | 5,040  | 692,708,930    | 4,706  | 637,500,756   | -100.00%            | -100.00% | 7.66%               | 9.36%  |
| March                             | 0     | 0           | 5,964  | 825,483,911    | 5,643  | 760,648,260   | -100.00%            | -100.00% | 5.38%               | 6.89%  |
| April                             | 0     | 0           | 5,899  | 815,621,798    | 5,797  | 793,367,736   | -100.00%            | -100.00% | -0.34%              | 0.56%  |
| May                               | 0     | 0           | 6,294  | 881,747,150    | 6,117  | 831,431,763   | -100.00%            | -100.00% | -1.13%              | 0.20%  |
| June                              | 0     | 0           | 6,322  | 890,410,020    | 6,211  | 852,438,818   | -100.00%            | -100.00% | -2.30%              | -1.73% |
| July                              | 0     | 0           | 6,551  | 915,103,306    | 6,346  | 869,502,671   | -100.00%            | -100.00% | -0.12%              | 0.54%  |
| August                            | 0     | 0           | 6,447  | 906,499,773    | 6,245  | 861,046,997   | -100.00%            | -100.00% | -0.96%              | -0.55% |
| September                         | 0     | 0           | 6,020  | 848,899,951    | 5,737  | 790,731,351   | -100.00%            | -100.00% | 1.37%               | 2.73%  |
| October                           | 0     | 0           | 6,459  | 916,700,076    | 6,078  | 846,310,860   | -100.00%            | -100.00% | 1.67%               | 2.68%  |
| November                          | 0     | 0           | 5,924  | 836,527,780    | 5,684  | 780,994,101   | -100.00%            | -100.00% | 3.81%               | 4.20%  |
| December                          | 0     | 0           | 6,078  | 848,973,148    | 5,600  | 761,317,385   | -100.00%            | -100.00% | 11.36%              | 13.06% |
| <b>Totals For Selected Period</b> | 5,762 | 812,175,948 | 5,348  | 733,746,679    | 5,086  | 688,923,110   | 7.74%               | 10.69%   | 5.15%               | 6.51%  |
| <b>Yearly Totals</b>              | 5,762 | 812,175,948 | 72,346 | 10,112,422,522 | 69,250 | 9,474,213,808 | -92.04%             | -91.97%  | 4.47%               | 6.74%  |