

**Austin-Bergstrom International Airport
Aviation Activity Report
Calendar Year 2017 vs 2016**

Combined Terminals

	7/2017	7/2016	Percent Change	01/2017 - 07/2017	01/2016 - 07/2016	Percent Change
ABIA						
Total Passenger Activity						
Domestic Enplaned Revenue	603,794	541,111	11.58	3,729,734	3,435,303	8.57
Domestic Deplaned Revenue	601,796	533,215	12.86	3,669,448	3,400,378	7.91
International Enplaned Revenue	17,506	13,940	25.58	91,287	69,747	30.88
International Deplaned Revenue	18,590	14,792	25.68	90,424	71,825	25.89
Domestic Enplaned Non-Revenue	16,784	13,634	23.10	95,274	77,140	23.51
Domestic Deplaned Non-Revenue	15,736	13,033	20.74	90,724	78,668	15.33
International Enplaned Non-Revenue	145	99	46.46	694	578	20.07
International Deplaned Non-Revenue	109	86	26.74	560	557	0.54
Intl Enplaned Pre-Cleared Revenue	1,731	1,619	6.92	11,602	11,272	2.93
Intl Deplaned Pre-Cleared Revenue	1,946	2,024	-3.85	11,957	12,267	-2.53
Intl Enplaned Pre-Cleared Non-Revenue	18	41	-56.10	163	193	-15.54
Intl Deplaned Pre-Cleared Non-Revenue	28	47	-40.43	172	215	-20.00
South Terminal Domestic Enplaned Revenue	16,051	0	0.00	51,951	0	0.00
South Terminal Domestic Deplaned Revenue	15,915	0	0.00	50,995	0	0.00
South Terminal Domestic Enplaned Non-Revenue	19	0	0.00	31	0	0.00
South Terminal Domestic Deplaned Non-Revenue	6	0	0.00	10	0	0.00
ABIA Passenger Totals	1,310,174	1,133,641	15.57	7,895,026	7,158,143	10.29
<i>ABIA Enplaned Passenger Totals</i>	<i>656,048</i>	<i>570,444</i>	<i>15.01</i>	<i>3,980,736</i>	<i>3,594,233</i>	<i>10.75</i>
<i>ABIA Deplaned Passenger Totals</i>	<i>654,126</i>	<i>563,197</i>	<i>16.15</i>	<i>3,914,290</i>	<i>3,563,910</i>	<i>9.83</i>
<i>ABIA Domestic Passenger Totals</i>	<i>1,270,101</i>	<i>1,100,993</i>	<i>15.36</i>	<i>7,688,167</i>	<i>6,991,489</i>	<i>9.96</i>
<i>ABIA International Passenger Totals</i>	<i>40,073</i>	<i>32,648</i>	<i>22.74</i>	<i>206,859</i>	<i>166,654</i>	<i>24.12</i>

CURRENT PASSENGER RECORD = 1,310,174 RECORD SET = JULY 2017

Total Aircraft Operations

Air Carrier	11,144	9,935	12.17	71,192	66,823	6.54
Commuter & Air Taxi	1,027	1,301	-21.06	8,665	8,652	0.15
Military	701	990	-29.19	5,602	6,128	-8.58
General Aviation						
Itinerant	3,789	3,760	0.77	29,141	28,199	3.34
Local	364	216	68.52	1,595	1,594	0.06
Total G.A.	4,153	3,976	4.45	30,736	29,793	3.17
Total Operations	17,025	16,202	5.08	116,195	111,396	4.31

**Austin-Bergstrom International Airport
Aviation Activity Report
Calendar Year 2017 vs 2016**

By Terminal

	7/2017	7/2016	Percent Change	01/2017 - 07/2017	01/2016 - 07/2016	Percent Change
<u>Barbara Jordan Terminal (BJT)</u>						
Passenger Activity						
Domestic Enplaned Revenue	603,794	541,111	11.58	3,729,734	3,435,303	8.57
Domestic Deplaned Revenue	601,796	533,215	12.86	3,669,448	3,400,378	7.91
International Enplaned Revenue	17,506	13,940	25.58	91,287	69,747	30.88
International Deplaned Revenue	18,590	14,792	25.68	90,424	71,825	25.89
Domestic Enplaned Non-Revenue	16,784	13,634	23.10	95,274	77,140	23.51
Domestic Deplaned Non-Revenue	15,736	13,033	20.74	90,724	78,668	15.33
International Enplaned Non-Revenue	145	99	46.46	694	578	20.07
International Deplaned Non-Revenue	109	86	26.74	560	557	0.54
Intl Enplaned Pre-Cleared Revenue	1,731	1,619	6.92	11,602	11,272	2.93
Intl Deplaned Pre-Cleared Revenue	1,946	2,024	-3.85	11,957	12,267	-2.53
Intl Enplaned Pre-Cleared Non-Revenue	18	41	-56.10	163	193	-15.54
Intl Deplaned Pre-Cleared Non-Revenue	28	47	-40.43	172	215	-20.00
Barbara Jordan Terminal Passenger Totals	1,278,183	1,133,641	12.75	7,792,039	7,158,143	8.86
<i>BJT Enplaned Passenger Totals</i>	<i>639,978</i>	<i>570,444</i>	<i>12.19</i>	<i>3,928,754</i>	<i>3,594,233</i>	<i>9.31</i>
<i>BJT Deplaned Passenger Totals</i>	<i>638,205</i>	<i>563,197</i>	<i>13.32</i>	<i>3,863,285</i>	<i>3,563,910</i>	<i>8.40</i>
<i>BJT Domestic Passenger Totals</i>	<i>1,238,110</i>	<i>1,100,993</i>	<i>12.45</i>	<i>7,585,180</i>	<i>6,991,489</i>	<i>8.49</i>
<i>BJT International Passenger Totals</i>	<i>40,073</i>	<i>32,648</i>	<i>22.74</i>	<i>206,859</i>	<i>166,654</i>	<i>24.12</i>
<u>South Terminal (ST)</u>						
Passenger Activity						
South Terminal Domestic Enplaned Revenue	16,051	0	0	51,951	0	0
South Terminal Domestic Deplaned Revenue	15,915	0	0	50,995	0	0
South Terminal Domestic Enplaned Non-Revenue	19	0	0	31	0	0
South Terminal Domestic Deplaned Non-Revenue	6	0	0	10	0	0
South Terminal Passenger Totals	31,991	0	0.00	102,987	0	0.00
<i>ST Enplaned Passenger Totals</i>	<i>16,070</i>	<i>0</i>	<i>0</i>	<i>51,982</i>	<i>0</i>	<i>0</i>
<i>ST Deplaned Passenger Totals</i>	<i>15,921</i>	<i>0</i>	<i>0</i>	<i>51,005</i>	<i>0</i>	<i>0</i>

**Austin-Bergstrom International Airport
Aviation Activity Report
Calendar Year 2017 vs 2016**

	7/2017	7/2016	Percent Change	01/2017 - 07/2017	01/2016 - 07/2016	Percent Change
<u>Total Cargo Activity</u>						
Mail						
Domestic Enplaned Mail	192,540	152,168	26.53	1,357,476	876,990	54.79
Domestic Deplaned Mail	426,948	301,525	41.36	2,535,986	1,492,008	69.92
International Enplaned Mail	0	0	0.00	0	0	0.00
International Deplaned Mail	0	2	-100.00	2	2	0.00
South Terminal-Intl Enplaned Mail	0	0	0.00	0	0	0.00
South Terminal-Intl Deplaned Mail	0	0	0.00	0	0	0.00
Mail Totals	619,488	453,695	36.54	3,893,464	2,369,000	64.35
Cargo						
Domestic Enplaned Cargo	4,876,493	4,742,471	2.83	34,622,113	35,138,267	-1.47
Domestic Deplaned Cargo	6,732,747	6,542,258	2.91	48,128,420	44,112,406	9.10
International Enplaned Cargo	396,054	273,263	44.94	4,781,814	2,642,971	80.93
International Deplaned Cargo	115,557	263,738	-56.18	2,554,688	2,104,165	21.41
South Terminal-Intl Enplaned Cargo	0	0	0.00	0	0	0.00
South Terminal-Intl Deplaned Cargo	0	0	0.00	0	0	0.00
Cargo Totals	12,120,851	11,821,730	2.53	90,087,035	83,997,809	7.25
Belly Freight						
Domestic Enplaned Belly Freight	283,556	234,134	21.11	1,893,159	1,668,725	13.45
Domestic Deplaned Belly Freight	488,524	421,923	15.79	3,546,825	3,288,936	7.84
International Enplaned Belly Freight	340,369	102,865	230.89	1,616,154	1,138,015	42.02
International Deplaned Belly Freight	756,384	422,222	79.14	4,909,895	3,403,373	44.27
South Terminal-Intl Enplaned Belly Freight	0	0	0.00	0	0	0.00
South Terminal-Intl Deplaned Belly Freight	0	0	0.00	0	0	0.00
Belly Freight Totals	1,868,833	1,181,144	58.22	11,966,033	9,499,049	25.97
Cargo Totals (Mail, Cargo, Belly Freight)	14,609,172	13,456,569	8.57	105,946,532	95,865,858	10.52
<i>Enplaned Cargo Totals</i>	<i>6,089,012</i>	<i>5,504,901</i>	<i>10.61</i>	<i>44,270,716</i>	<i>41,464,968</i>	<i>6.77</i>
<i>Deplaned Cargo Totals</i>	<i>8,520,160</i>	<i>7,951,668</i>	<i>7.15</i>	<i>61,675,816</i>	<i>54,400,890</i>	<i>13.37</i>
<i>Domestic Cargo Totals</i>	<i>13,000,808</i>	<i>12,394,479</i>	<i>4.89</i>	<i>92,083,979</i>	<i>86,577,332</i>	<i>6.36</i>
<i>International Cargo Totals</i>	<i>1,608,364</i>	<i>1,062,090</i>	<i>51.43</i>	<i>13,862,553</i>	<i>9,288,526</i>	<i>49.24</i>

CURRENT CARGO RECORD = 40,215,518

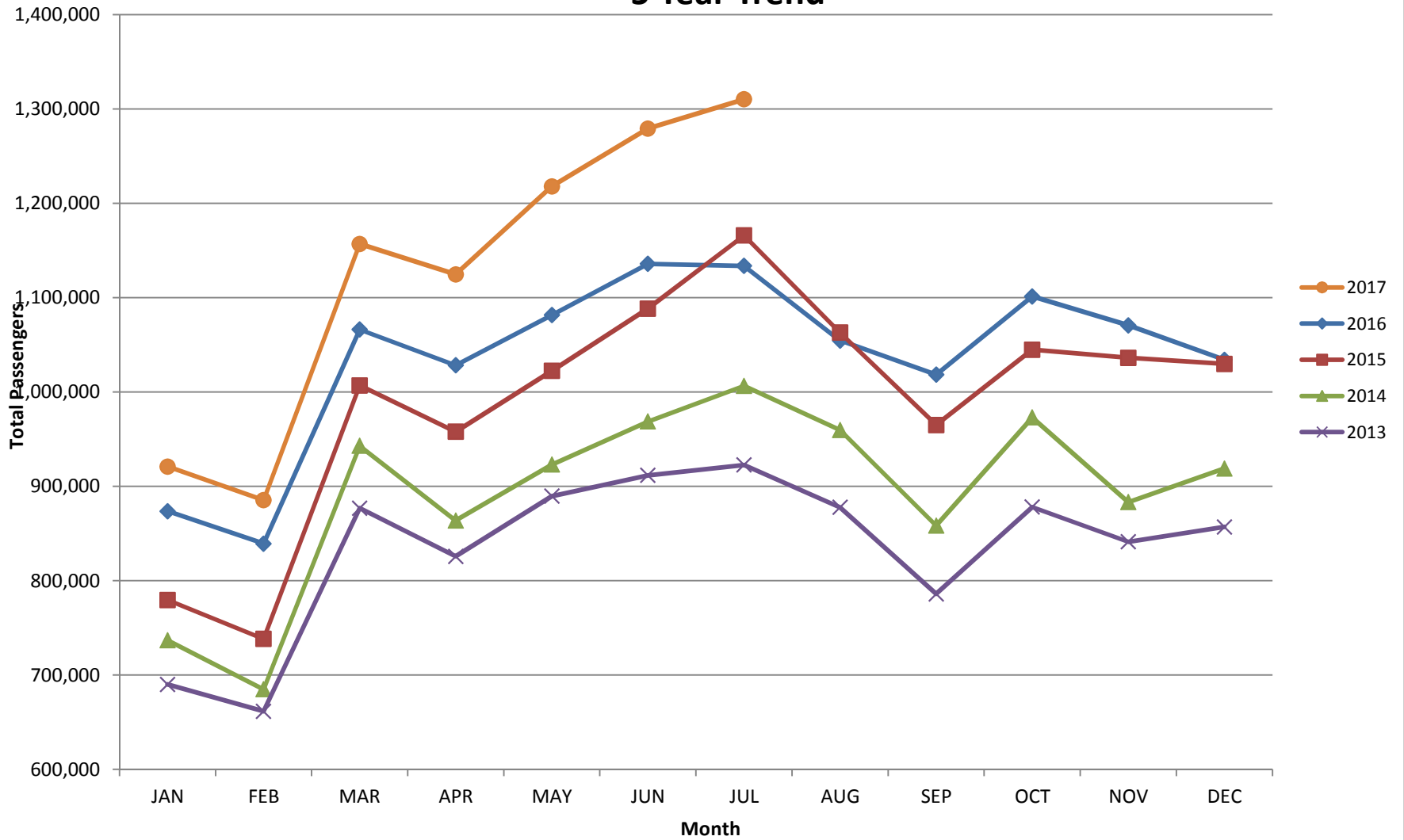
RECORD SET = MARCH 2001

AUS – Airline Codes
July 2017

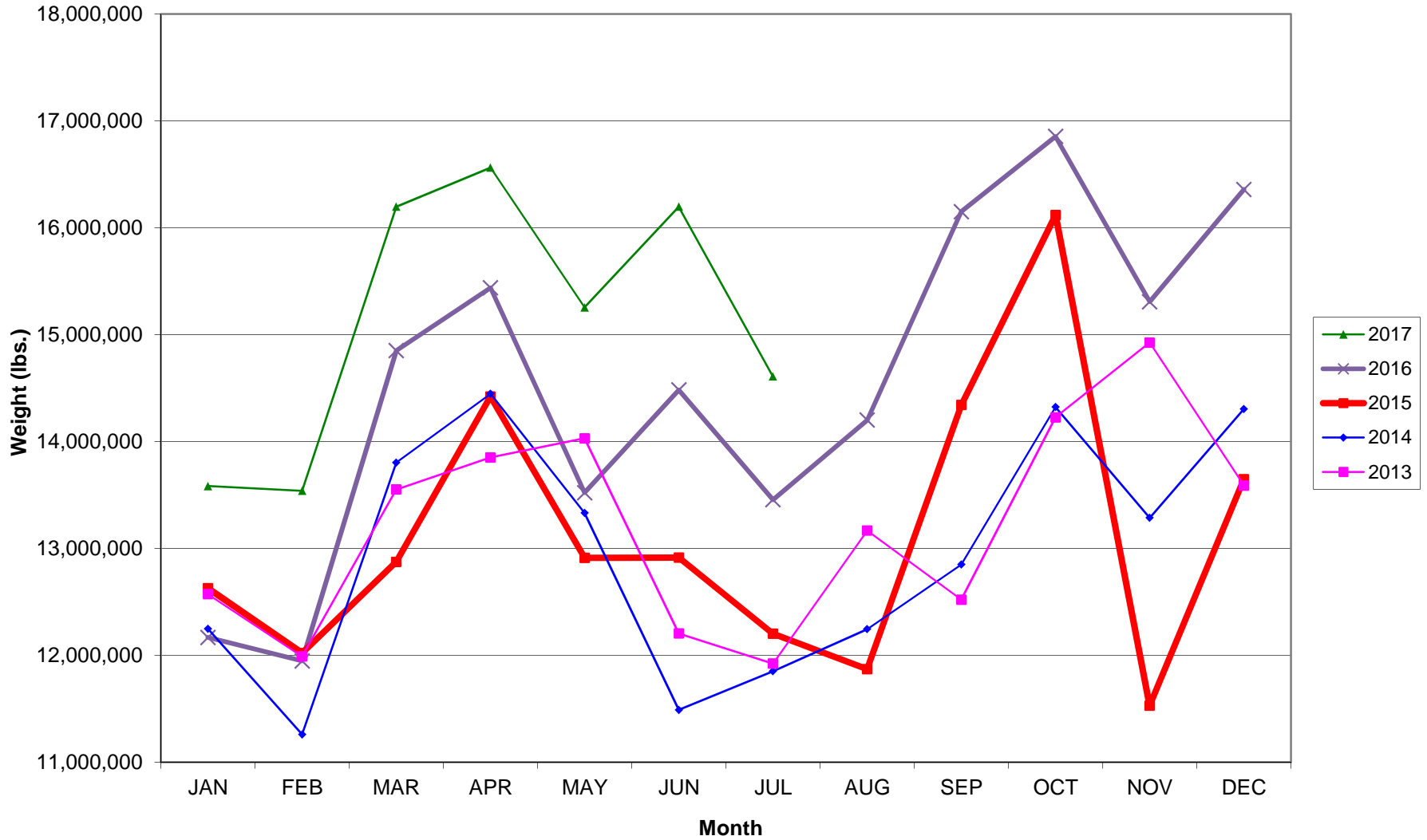
<u>Code</u>	<u>Carrier</u>
AM	AeroMexico Airlines
AC	Air Canada
AS	Alaska Airlines, Inc.
G4	Allegiant Air, LLC
AA	American Airlines, Inc.
BA	British Airways Plc
DE	Condor Airlines
DL	Delta Airlines
F9	Frontier Airlines
B6	JetBlue Airways Corp.
WN	Southwest Airlines
SY	Sun Country Airlines/ MN Airlines, LLC
UA	United Airlines, Inc.
VC	VIA Airlines
VX	Virgin America Inc.
Y4	Volaris/Concesionaria Vuela Compañía de Aviación, S.A.P.I. de C.V.

AUSTIN PASSENGER TRAFFIC

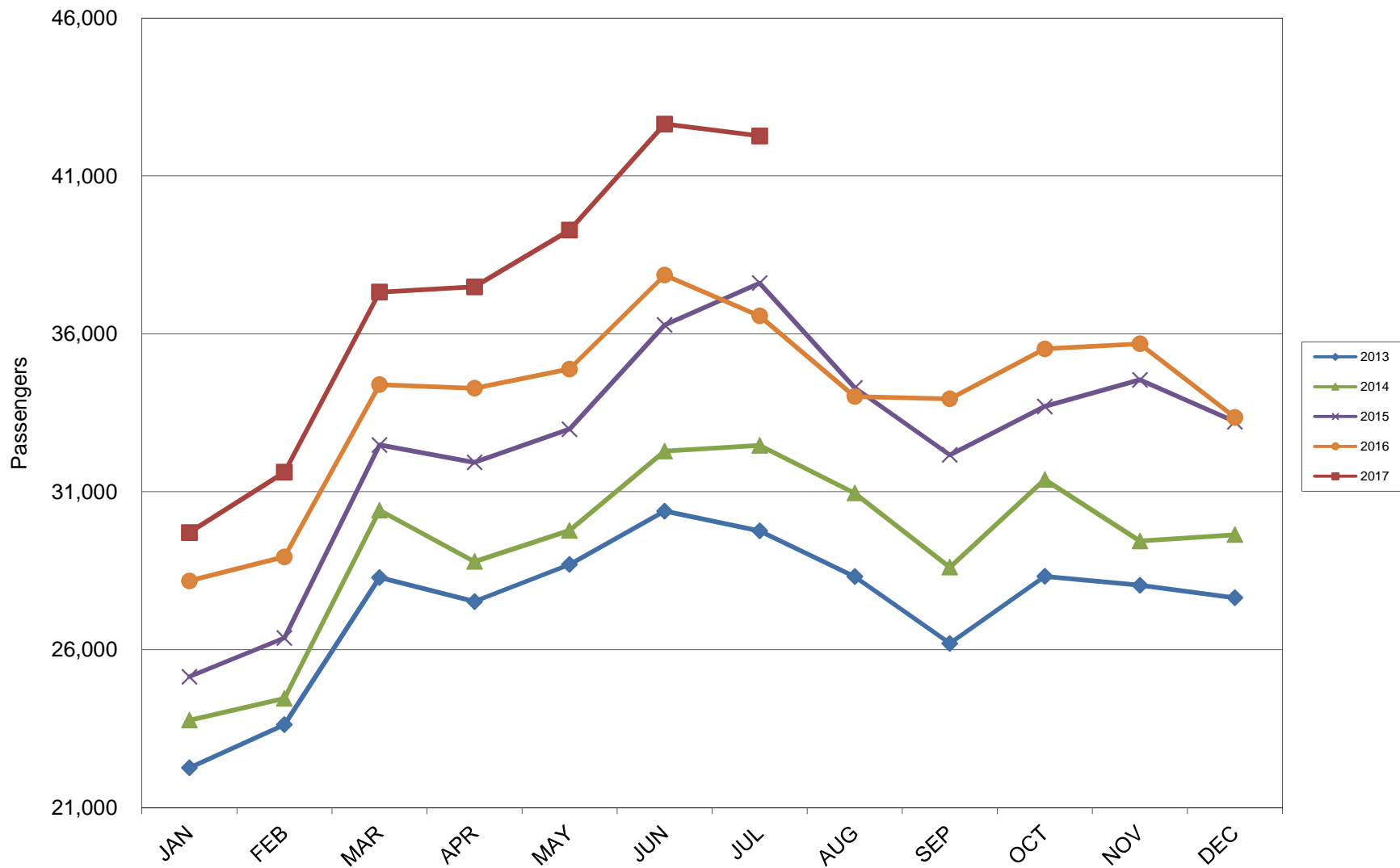
5 Year Trend



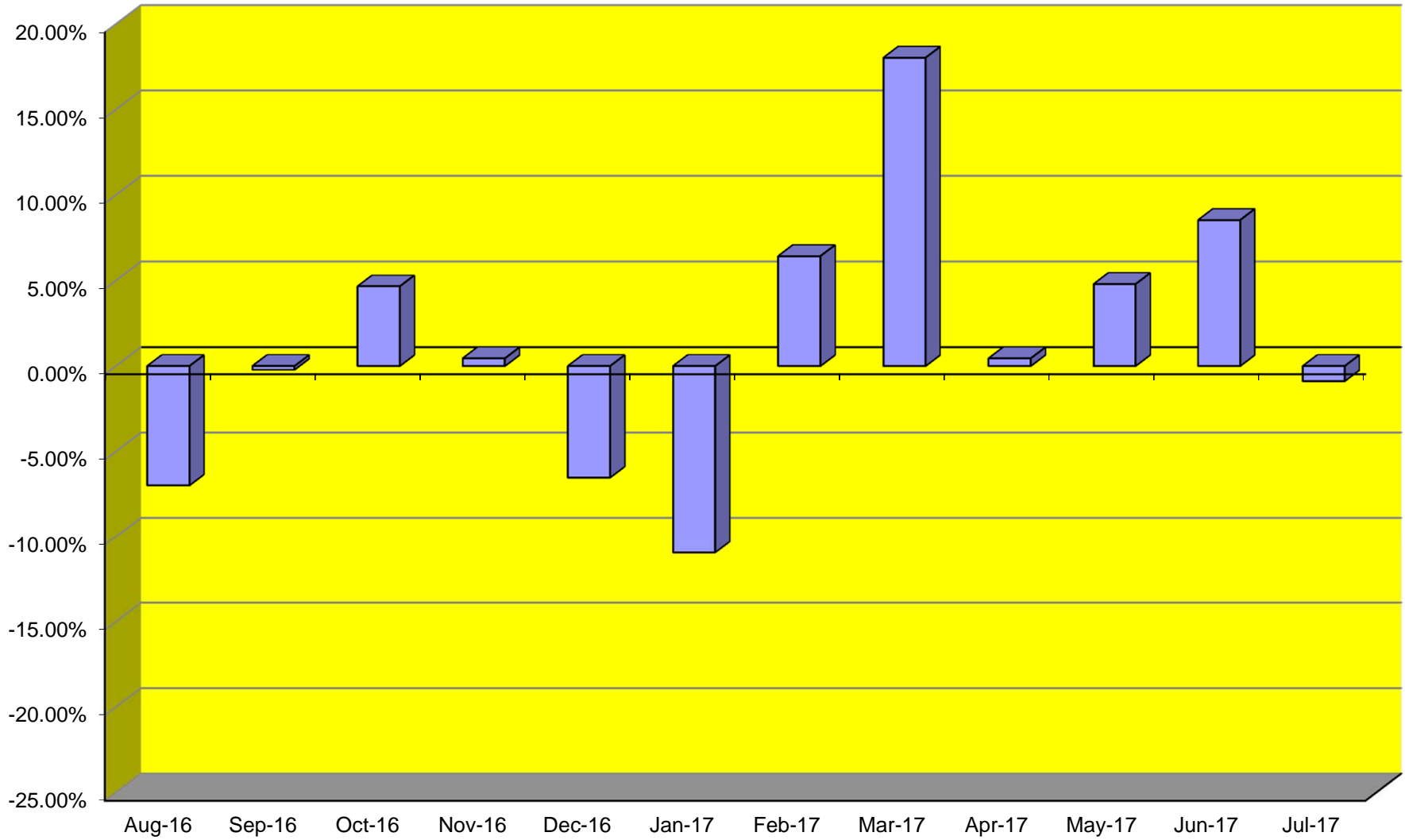
TOTAL CARGO POUNDAGE - AUSTIN, TEXAS



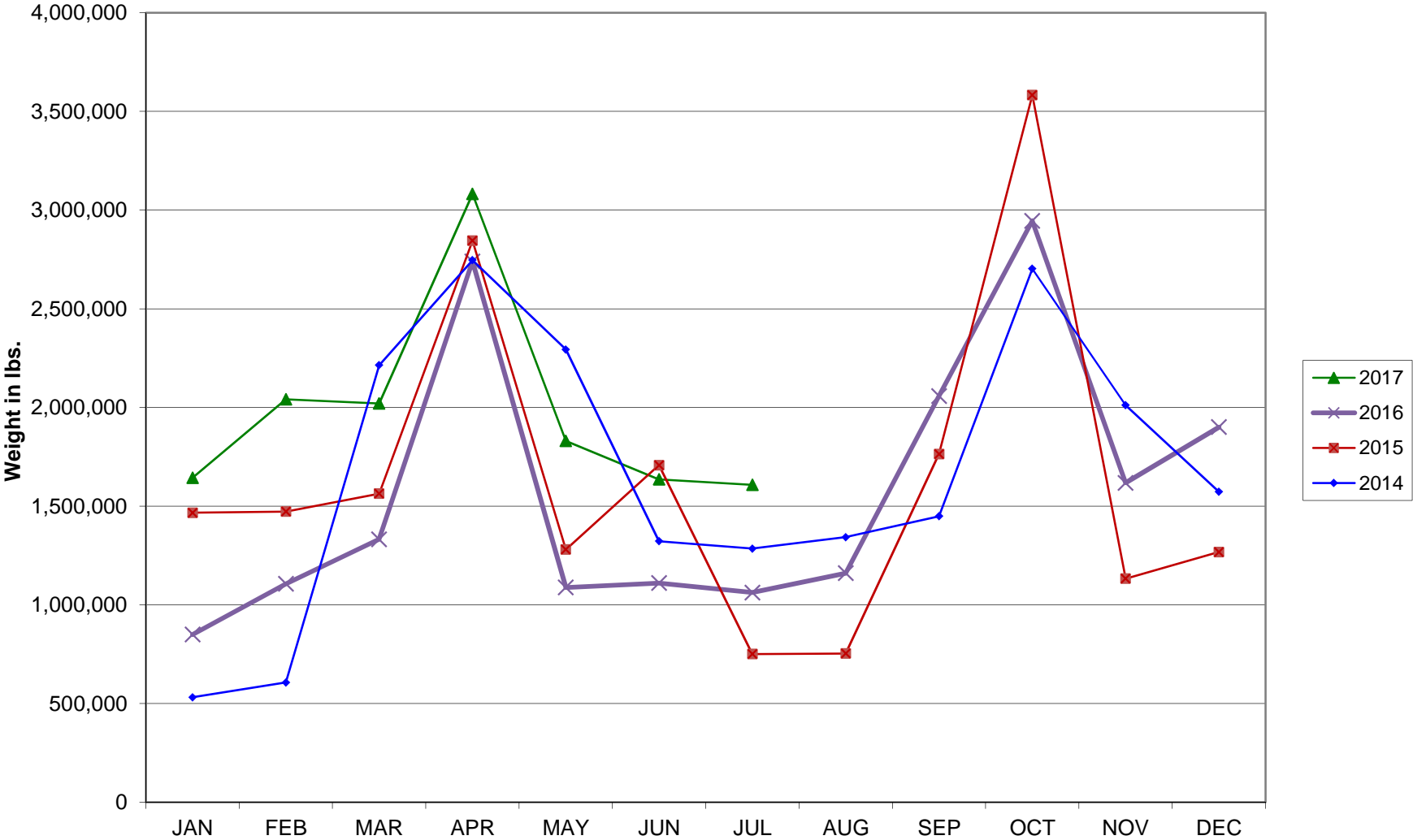
Average Daily Passengers



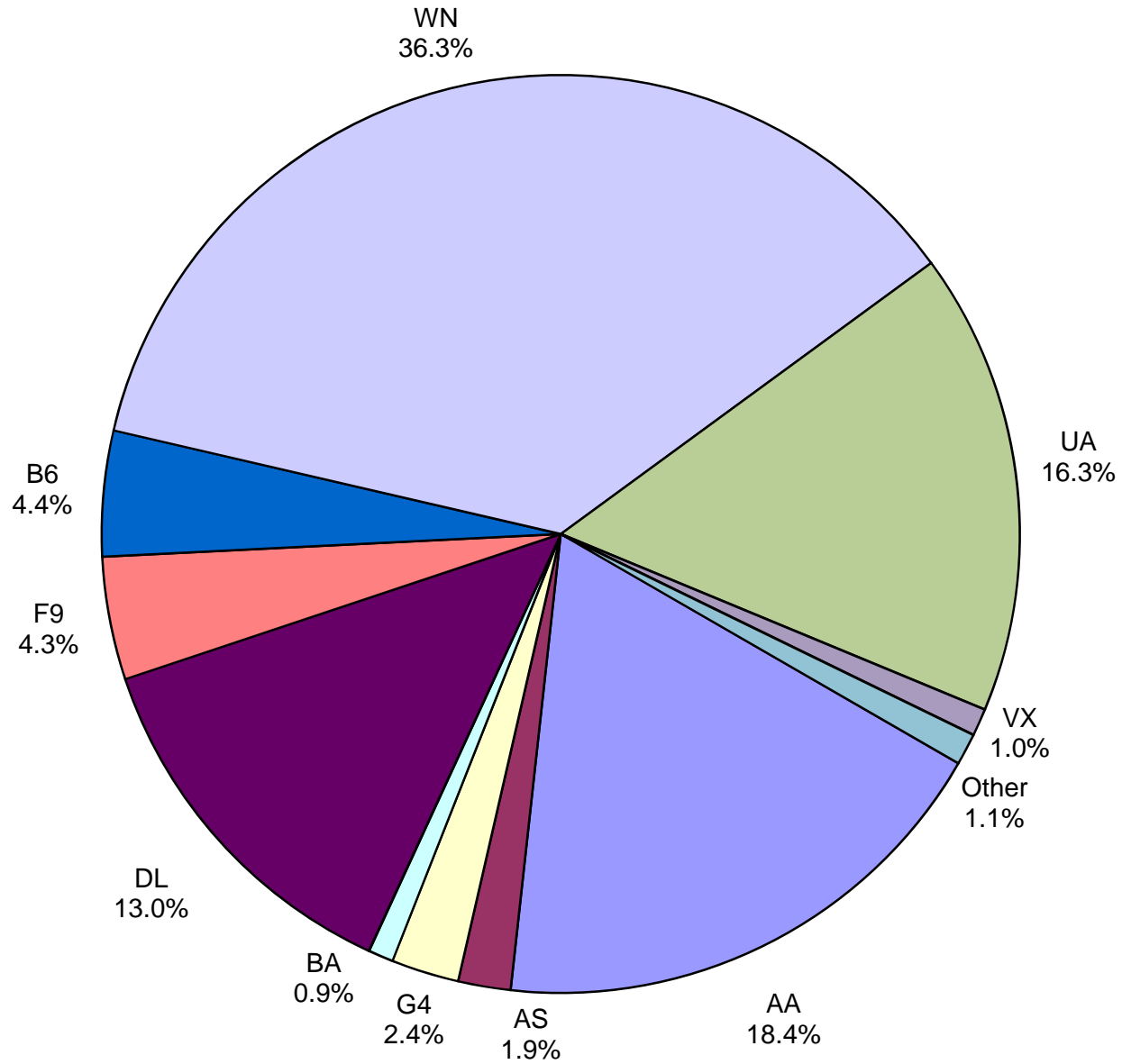
Monthly % Change in Average Daily Passengers



HISTORY OF INTERNATIONAL AIR CARGO



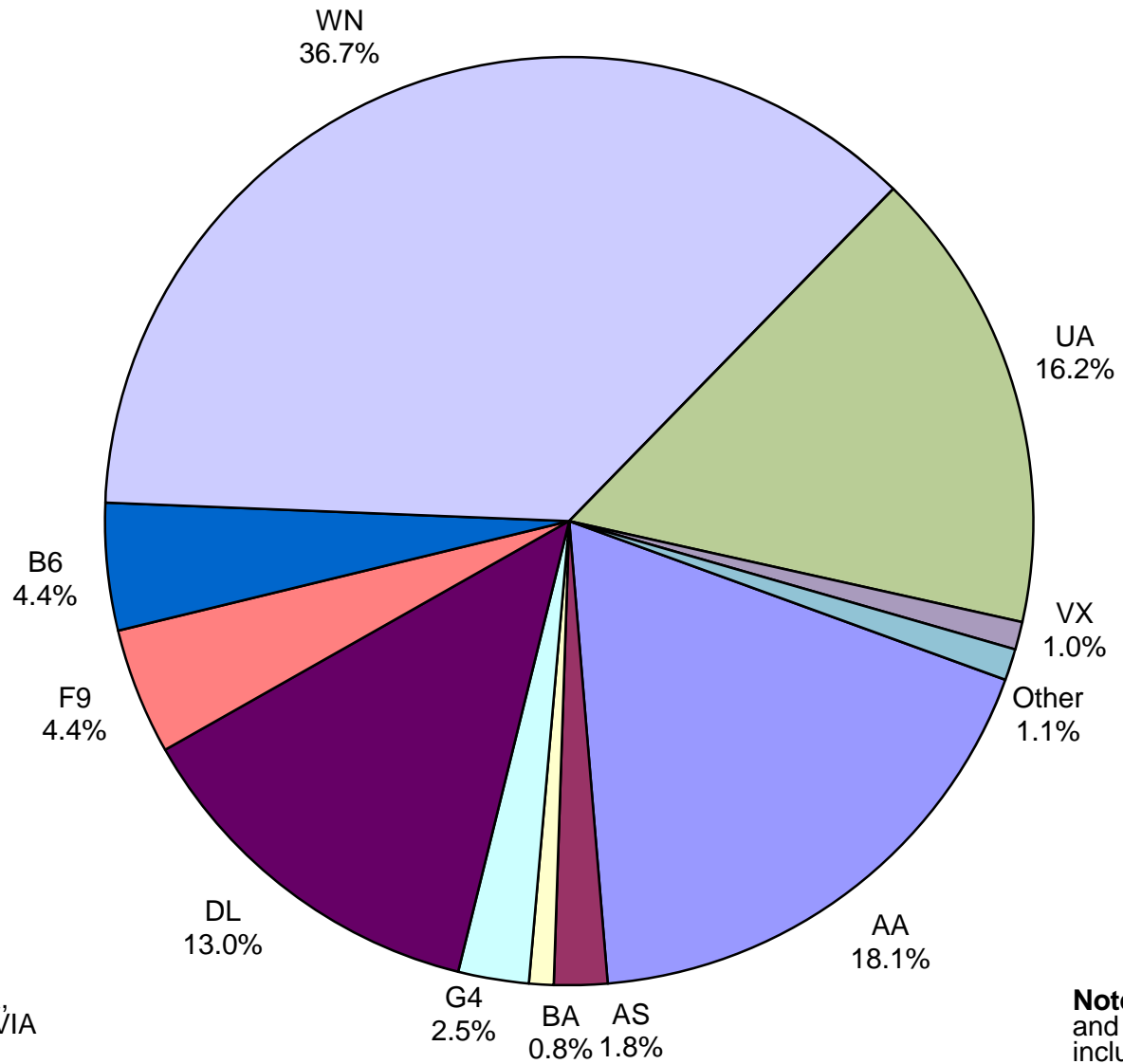
Total Passengers July 2017



Other: Aeromexico, Air Canada LLC, Condor Airlines, Sun Country, VIA Airlines and Volaris

Note: American, Delta and United Airlines percentages include Affiliates.

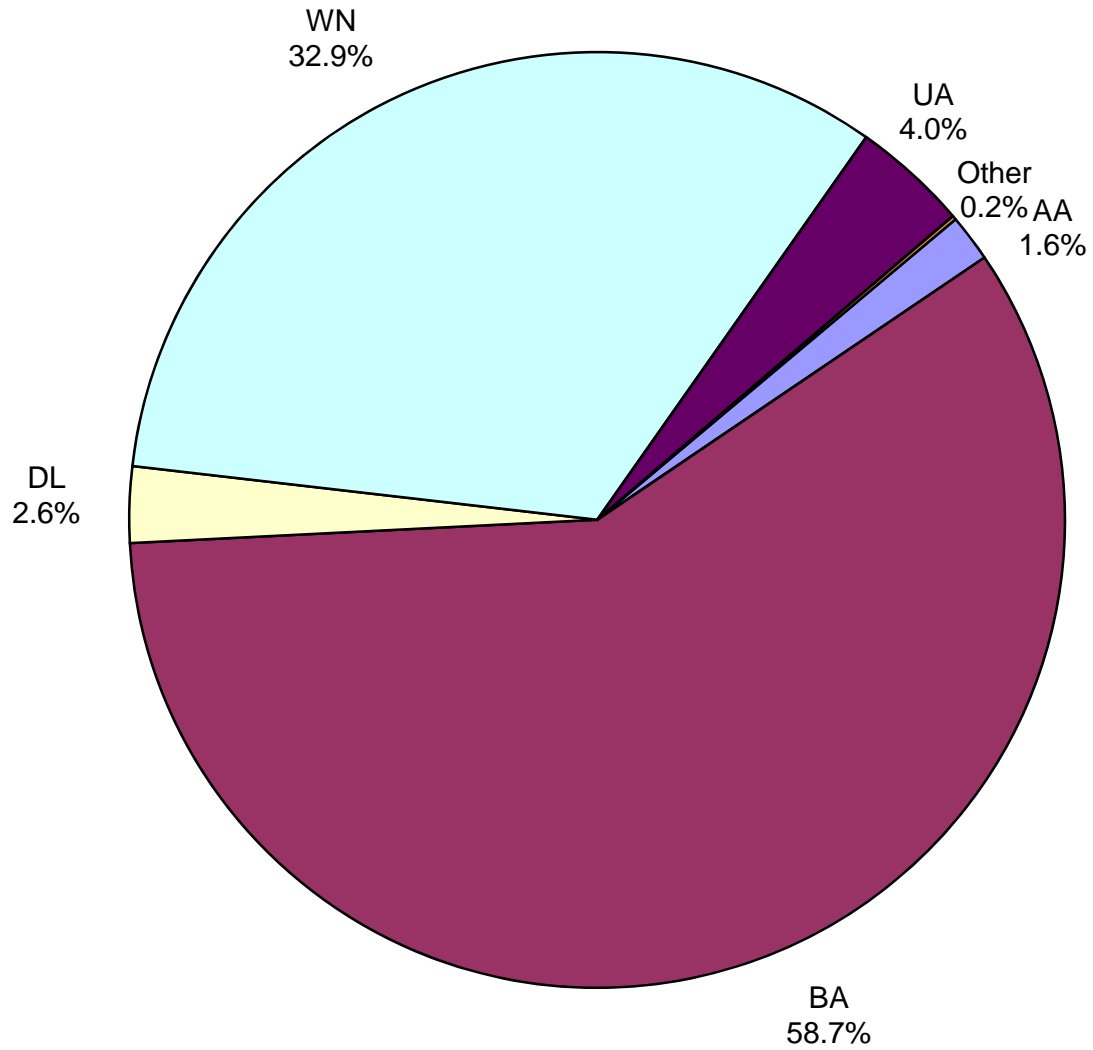
**All Passenger Carriers
Enplaned Revenue Passengers
July 2017**



Other: Aeromexico, Air Canada, Condor Airlines, Sun Country, VIA Airlines and Volaris

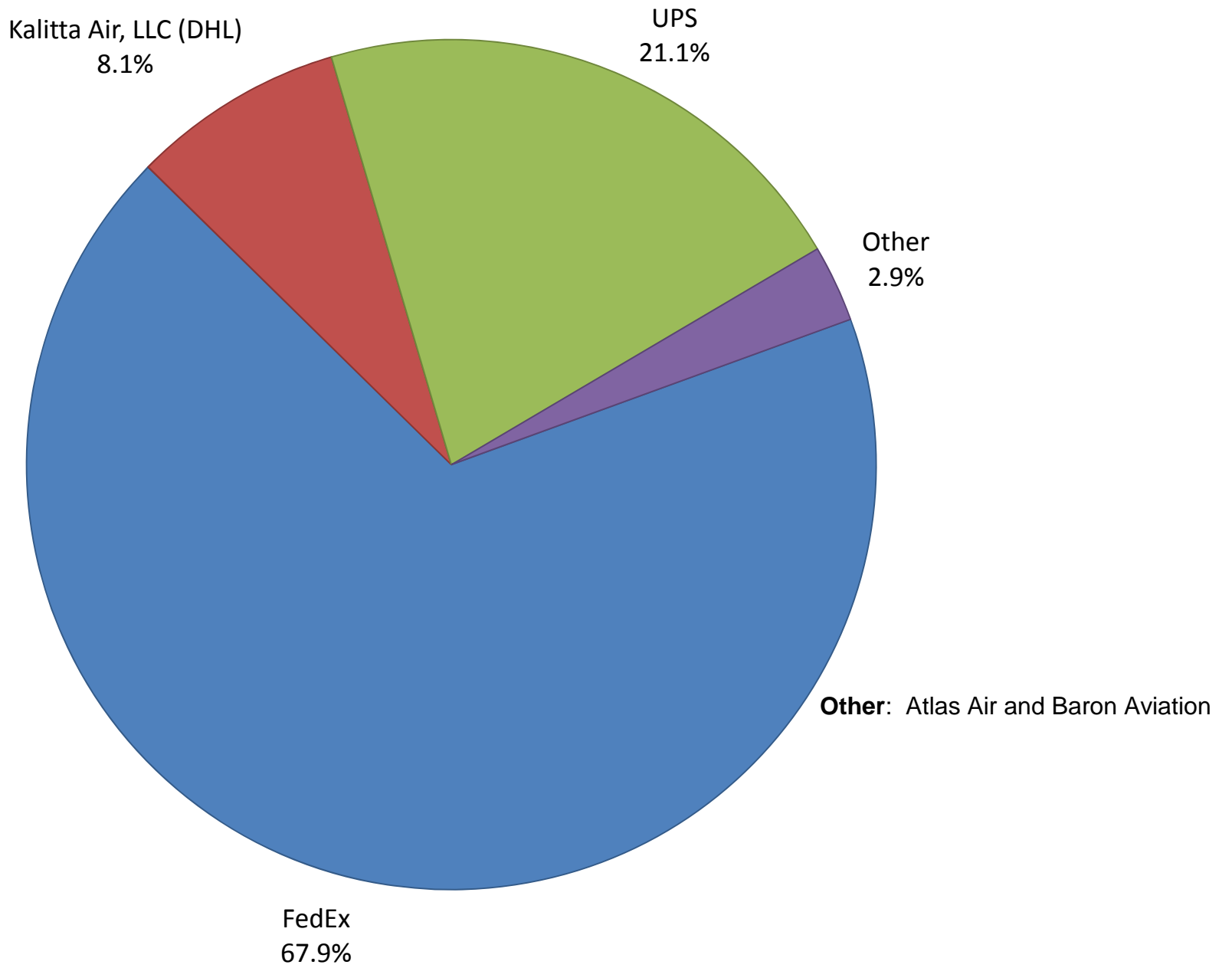
Note: American/US Airways, Delta and United Airlines percentages include Affiliates.

**AUS Belly Freight Market Shares
July 2017**

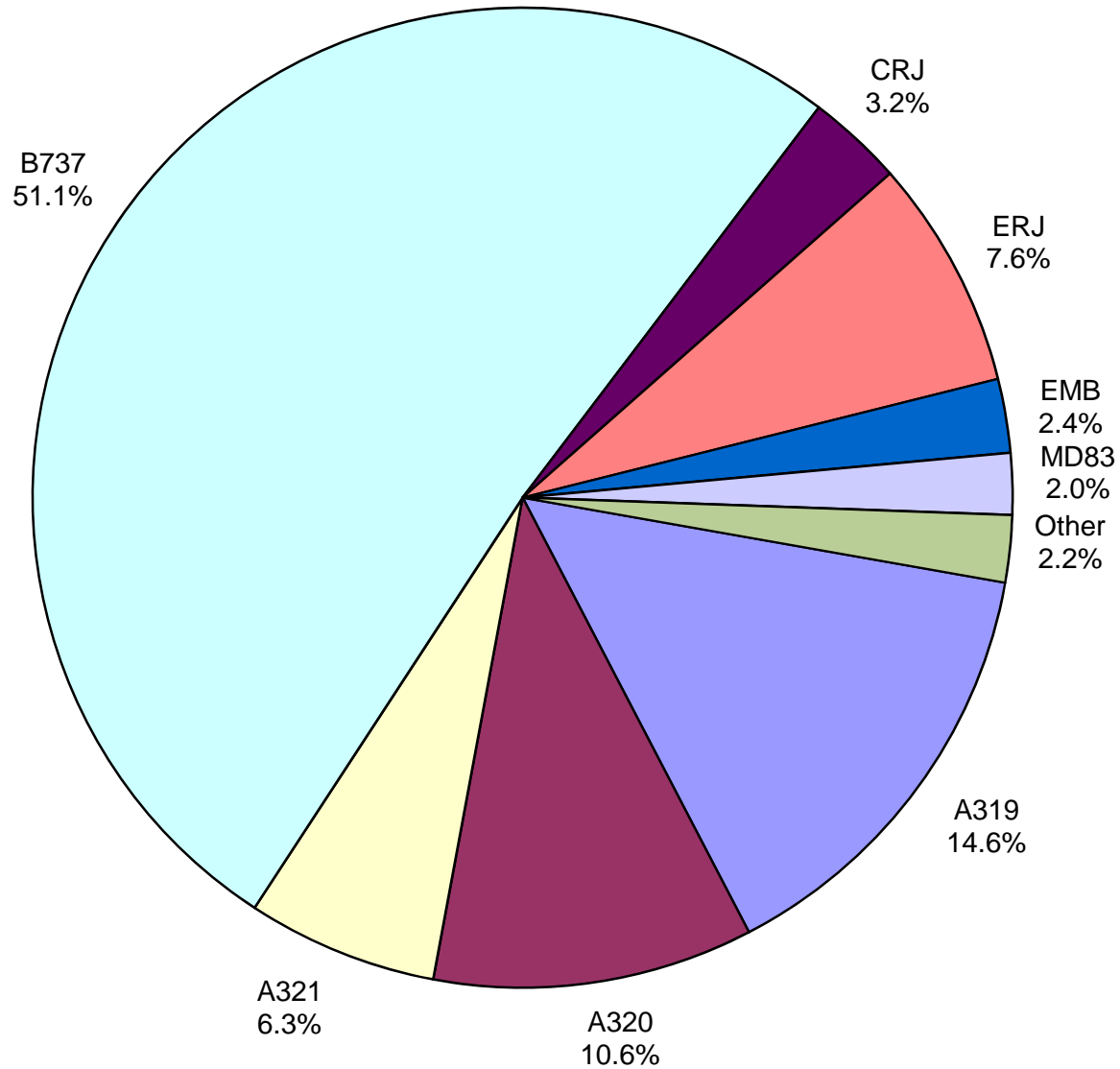


Other = Alaska Airlines

Air Cargo Market Share July 2017

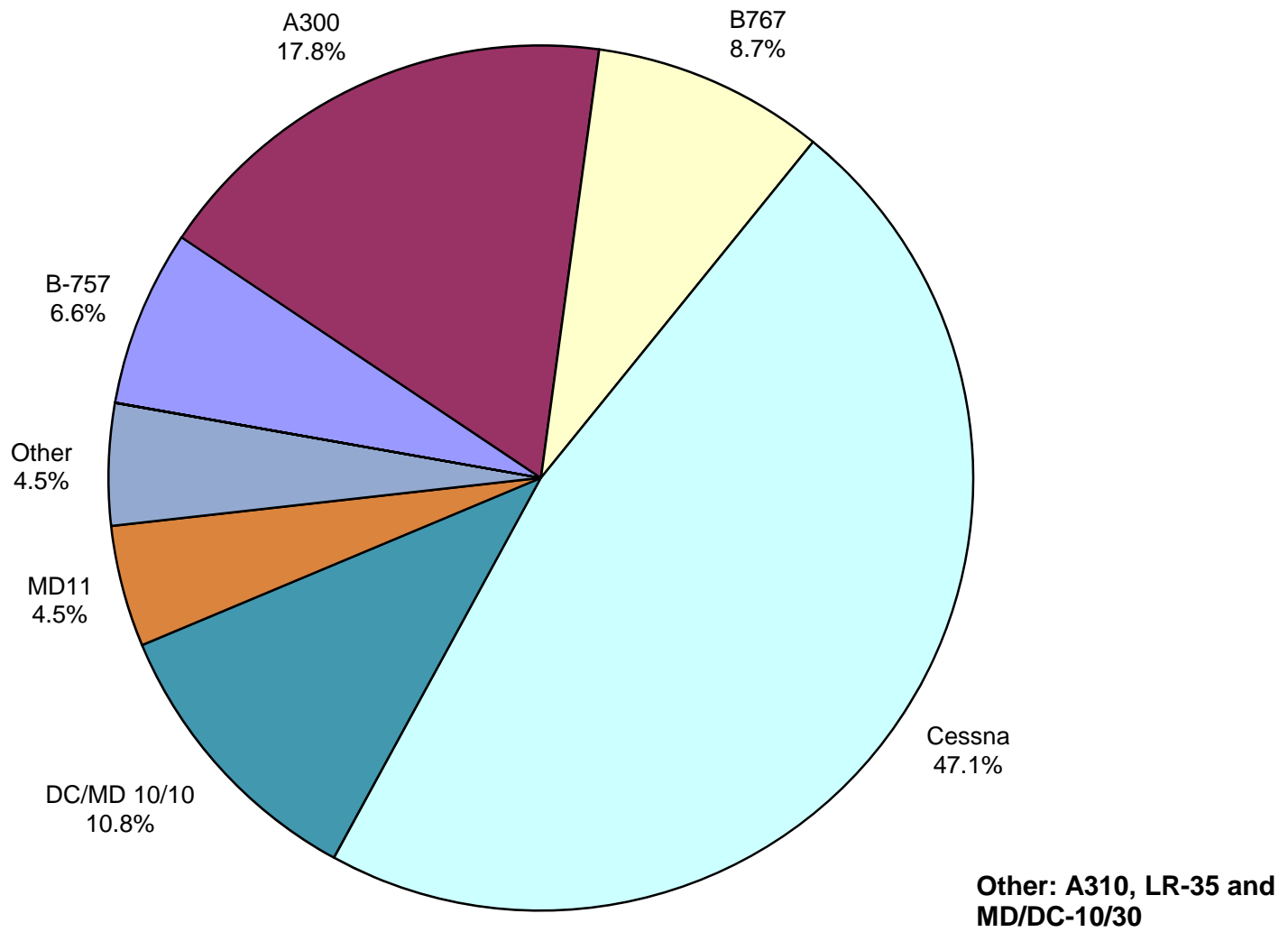


**AUS Scheduled Passenger Aircraft Fleet Mix
July 2017**



Other: B-717, B-757,
B-767, B-787-900,
MD-82, MD-88, MD-90

**AUS Scheduled Cargo Aircraft Fleet Mix
July 2017**



Austin-Bergstrom International Airport

PAX Detail Report - July, 2017

Company	07/2017	07/2016	Period		YTD 2017	YTD 2016	YTD		2017 Share	2016 Share	Share Diff
			Difference	Change			Difference	Change			
AeroMexico Airlines	3,719	0	3,719	0.0	22,037	0	22,037	0.0	0.3	0.0	0.3
Air Canada	3,723	3,731	-8	-0.2	23,894	23,947	-53	-0.2	0.3	0.3	0.0
Alaska Airlines	24,215	21,454	2,761	12.9	144,479	129,148	15,331	11.9	1.8	1.8	0.0
Allegiant Air	31,202	19,626	11,576	59.0	160,320	100,644	59,676	59.3	2.0	1.4	0.6
American Airlines	241,193	226,893	14,300	6.3	1,491,914	1,462,627	29,287	2.0	18.9	20.4	-1.5
Ameristarjet Charter	0	0	0	0.0	0	14	-14	-100.0	0.0	0.0	0.0
Atlas Air	0	0	0	0.0	0	453	-453	-100.0	0.0	0.0	0.0
British Airways	11,641	12,214	-573	-4.7	74,865	75,832	-967	-1.3	0.9	1.1	-0.1
Condor Airlines	4,286	3,743	543	14.5	11,809	4,645	7,164	154.2	0.1	0.1	0.1
Delta Air Lines	170,556	140,744	29,812	21.2	990,078	886,671	103,407	11.7	12.5	12.4	0.2
Frontier Airlines	56,761	33,994	22,767	67.0	263,736	163,652	100,084	61.2	3.3	2.3	1.1
Iberia Airlines	0	0	0	0.0	245	246	-1	-0.4	0.0	0.0	0.0
JetBlue Airways	57,822	56,566	1,256	2.2	356,265	334,122	22,143	6.6	4.5	4.7	-0.2
Southwest Airlines	475,899	428,520	47,379	11.1	2,950,871	2,761,157	189,714	6.9	37.4	38.6	-1.2
Sun Country Airlines	402	606	-204	-33.7	3,011	3,329	-318	-9.6	0.0	0.0	0.0
Swift Air	0	0	0	0.0	706	0	706	0.0	0.0	0.0	0.0
Texas Sky	0	165	-165	-100.0	604	943	-339	-35.9	0.0	0.0	0.0
United Airlines	213,557	170,004	43,553	25.6	1,296,381	1,109,857	186,524	16.8	16.4	15.5	0.9
VIA Airlines	789	0	789	0.0	1,583	0	1,583	0.0	0.0	0.0	0.0
Virgin America	12,662	15,381	-2,719	-17.7	92,509	99,985	-7,476	-7.5	1.2	1.4	-0.2
Volaris	1,747	0	1,747	0.0	9,583	0	9,583	0.0	0.1	0.0	0.1
Xtra Airways/Casino Express	0	0	0	0.0	136	871	-735	-84.4	0.0	0.0	0.0
Report Totals	1,310,174	1,133,641	176,533	15.6%	7,895,026	7,158,143	736,883	10.3%			

Statistics Included in Report:

Domestic Passengers:	Enplaned Revenue, Deplaned Revenue, Enplaned Non-Revenue, Deplaned Non-Revenue
International Passengers:	Enplaned Revenue, Deplaned Revenue, Enplaned Non-Revenue, Deplaned Non-Revenue
International Pre-Cleared Passengers:	Enplaned Revenue, Deplaned Revenue, Enplaned Non-Revenue, Deplaned Non-Revenue
South Terminal Domestic Passengers:	Enplaned Revenue, Deplaned Revenue, Enplaned Non-Revenue, Deplaned Non-Revenue

Austin-Bergstrom International Airport

Summary Landing Report

Landing Type: Total

Month	2017		2016		2015		% Change 2017 - 2016		% Change 2016 - 2015	
	Count	Weight	Count	Weight	Count	Weight	Count	Weight	Count	Weight
January	4,768	612,688,871	4,622	560,718,408	4,480	530,688,382	3.16%	9.27%	3.17%	5.66%
February	4,357	552,711,639	4,387	527,452,920	3,992	477,489,019	-0.68%	4.79%	9.89%	10.46%
March	5,307	685,661,659	5,151	639,655,137	4,872	584,604,521	3.03%	7.19%	5.73%	9.42%
April	5,179	689,402,051	4,892	614,643,711	4,875	593,462,176	5.87%	12.16%	0.35%	3.57%
May	5,529	736,484,083	5,096	630,853,941	5,161	625,876,151	8.50%	16.74%	-1.26%	0.80%
June	5,603	752,628,599	5,179	651,537,449	5,239	644,690,908	8.19%	15.52%	-1.15%	1.06%
July	5,698	763,088,836	5,233	663,015,597	5,503	676,131,170	8.89%	15.09%	-4.91%	-1.94%
August			5,181	660,099,361	5,277	652,770,571			-1.82%	1.12%
September			4,738	623,397,035	4,833	598,547,454			-1.97%	4.15%
October			4,923	649,182,343	4,891	611,952,269			0.65%	6.08%
November			4,775	624,303,554	4,815	605,234,834			-0.83%	3.15%
December			4,893	629,611,090	5,100	633,215,540			-4.06%	-0.57%
Totals for Selected Period	36,441	4,792,665,738	34,560	4,287,877,163	34,122	4,132,942,327	5.44%	11.77%	1.28%	3.75%
Yearly Totals	36,441	4,792,665,738	59,070	7,474,470,546	59,038	7,234,662,995			0.05%	3.31%