

**Austin-Bergstrom International Airport
Aviation Activity Report
Calendar Year 2018 vs 2017**

Combined Terminals

	10/2018	10/2017	Percent Change	1/2018 - 10/2018	1/2017 - 10/2017	Percent Change
ABIA						
Total Passenger Activity						
Domestic Enplaned Revenue	674,367	594,146	13.50	6,127,006	5,389,039	13.69
Domestic Deplaned Revenue	680,722	599,364	13.57	6,134,950	5,371,787	14.21
International Enplaned Revenue	13,678	8,537	60.22	166,907	119,988	39.10
International Deplaned Revenue	14,304	8,849	61.65	171,152	121,125	41.30
Domestic Enplaned Non-Revenue	14,099	13,524	4.25	147,945	135,486	9.20
Domestic Deplaned Non-Revenue	13,470	12,999	3.62	141,604	129,183	9.62
International Enplaned Non-Revenue	104	88	18.18	1,251	975	28.31
International Deplaned Non-Revenue	103	84	22.62	1,068	841	26.99
Intl Enplaned Pre-Cleared Revenue	2,198	1,867	17.73	18,875	16,754	12.66
Intl Deplaned Pre-Cleared Revenue	2,583	1,985	30.13	20,405	17,628	15.75
Intl Enplaned Pre-Cleared Non-Revenue	24	29	-17.24	307	230	33.48
Intl Deplaned Pre-Cleared Non-Revenue	13	20	-35.00	320	234	36.75
South Terminal Domestic Enplaned Revenue	9,432	13,699	-31.15	131,721	82,842	59.00
South Terminal Domestic Deplaned Revenue	9,645	13,944	-30.83	132,558	82,821	60.05
South Terminal Domestic Enplaned Non-Revenue	8	9	-11.11	55	46	19.57
South Terminal Domestic Deplaned Non-Revenue	6	9	-33.33	72	22	227.27
ABIA Passenger Totals	1,434,756	1,269,153	13.05	13,196,196	11,469,001	15.06
<i>ABIA Enplaned Passenger Totals</i>	<i>713,910</i>	<i>631,899</i>	<i>12.98</i>	<i>6,594,067</i>	<i>5,745,360</i>	<i>14.77</i>
<i>ABIA Deplaned Passenger Totals</i>	<i>720,846</i>	<i>637,254</i>	<i>13.12</i>	<i>6,602,129</i>	<i>5,723,641</i>	<i>15.35</i>
<i>ABIA Domestic Passenger Totals</i>	<i>1,401,749</i>	<i>1,247,694</i>	<i>12.35</i>	<i>12,815,911</i>	<i>11,191,226</i>	<i>14.52</i>
<i>ABIA International Passenger Totals</i>	<i>33,007</i>	<i>21,459</i>	<i>53.81</i>	<i>380,285</i>	<i>277,775</i>	<i>36.90</i>

CURRENT PASSENGER RECORD = 1,511,634 RECORD SET = JULY 2018

Total Aircraft Operations

Air Carrier	11,776	10,733	9.72	112,434	102,498	9.69
Commuter & Air Taxi	1,789	1,556	14.97	14,667	12,570	16.68
Military	702	847	-17.12	8,432	8,422	0.12
General Aviation						
Itinerant	4,227	4,637	-8.84	39,443	41,557	-5.09
Local	94	160	-41.25	1,281	2,139	-40.11
Total G.A.	4,321	4,797	-9.92	40,724	43,696	-6.80
Total Operations	18,588	17,933	3.65	176,257	167,186	5.43

**Austin-Bergstrom International Airport
Aviation Activity Report
Calendar Year 2018 vs 2017**

By Terminal

	10/2018	10/2017	Percent Change	1/2018 - 10/2018	1/2017 - 10/2017	Percent Change
<u>Barbara Jordan Terminal (BJT)</u>						
Passenger Activity						
Domestic Enplaned Revenue	674,367	594,146	13.50	6,127,006	5,389,039	13.69
Domestic Deplaned Revenue	680,722	599,364	13.57	6,134,950	5,371,787	14.21
International Enplaned Revenue	13,678	8,537	60.22	166,907	119,988	39.10
International Deplaned Revenue	14,304	8,849	61.65	171,152	121,125	41.30
Domestic Enplaned Non-Revenue	14,099	13,524	4.25	147,945	135,486	9.20
Domestic Deplaned Non-Revenue	13,470	12,999	3.62	141,604	129,183	9.62
International Enplaned Non-Revenue	104	88	18.18	1,251	975	28.31
International Deplaned Non-Revenue	103	84	22.62	1,068	841	26.99
Intl Enplaned Pre-Cleared Revenue	2,198	1,867	17.73	18,875	16,754	12.66
Intl Deplaned Pre-Cleared Revenue	2,583	1,985	30.13	20,405	17,628	15.75
Intl Enplaned Pre-Cleared Non-Revenue	24	29	-17.24	307	230	33.48
Intl Deplaned Pre-Cleared Non-Revenue	13	20	-35.00	320	234	36.75
Barbara Jordan Terminal Passenger Totals	1,415,665	1,241,492	14.03	12,931,790	11,303,270	14.41
<i>BJT Enplaned Passenger Totals</i>	<i>704,470</i>	<i>618,191</i>	<i>13.96</i>	<i>6,462,291</i>	<i>5,662,472</i>	<i>14.12</i>
<i>BJT Deplaned Passenger Totals</i>	<i>711,195</i>	<i>623,301</i>	<i>14.10</i>	<i>6,469,499</i>	<i>5,640,798</i>	<i>14.69</i>
<i>BJT Domestic Passenger Totals</i>	<i>1,382,658</i>	<i>1,220,033</i>	<i>13.33</i>	<i>12,551,505</i>	<i>11,025,495</i>	<i>13.84</i>
<i>BJT International Passenger Totals</i>	<i>33,007</i>	<i>21,459</i>	<i>53.81</i>	<i>380,285</i>	<i>277,775</i>	<i>36.90</i>
<u>South Terminal (ST)</u>						
Passenger Activity						
South Terminal Domestic Enplaned Revenue	9,432	13,699	-31.15	131,721	82,842	59.00
South Terminal Domestic Deplaned Revenue	9,645	13,944	-30.83	132,558	82,821	60.05
South Terminal Domestic Enplaned Non-Revenue	8	9	-11.11	55	46	19.57
South Terminal Domestic Deplaned Non-Revenue	6	9	-33.33	72	22	227.27
South Terminal Passenger Totals	19,091	27,661	-30.98	264,406	165,731	59.54
<i>ST Enplaned Passenger Totals</i>	<i>9,440</i>	<i>13,708</i>	<i>-31.14</i>	<i>131,776</i>	<i>82,888</i>	<i>58.98</i>
<i>ST Deplaned Passenger Totals</i>	<i>9,651</i>	<i>13,953</i>	<i>-30.83</i>	<i>132,630</i>	<i>82,843</i>	<i>60.10</i>

**Austin-Bergstrom International Airport
Aviation Activity Report
Calendar Year 2018 vs 2017**

	10/2018	10/2017	Percent Change	1/2018 - 10/2018	1/2017 - 10/2017	Percent Change
<u>Total Cargo Activity</u>						
Mail						
Domestic Enplaned Mail	175,874	179,032	-1.76	2,002,573	1,918,034	4.41
Domestic Deplaned Mail	487,638	423,942	15.02	4,247,331	3,744,158	13.44
International Enplaned Mail	0	0	0.00	0	0	0.00
International Deplaned Mail	0	0	0.00	0	2	-100.00
South Terminal-Domestic Enplaned Mail	0	0	0.00	0	0	0.00
South Terminal-Domestic Deplaned Mail	0	0	0.00	0	0	0.00
Mail Totals	663,512	602,974	10.04	6,249,904	5,662,194	10.38
Cargo						
Domestic Enplaned Cargo	5,103,867	4,794,379	6.46	49,481,077	51,593,955	-4.10
Domestic Deplaned Cargo	8,028,934	7,229,839	11.05	69,601,853	70,490,368	-1.26
International Enplaned Cargo	1,794,895	2,039,517	-11.99	7,045,792	7,944,423	-11.31
International Deplaned Cargo	1,166,504	950,066	22.78	3,292,336	4,579,025	-28.10
South Terminal-Domestic Enplaned Cargo	0	0	0.00	0	0	0.00
South Terminal-Domestic Deplaned Cargo	0	0	0.00	0	0	0.00
Cargo Totals	16,094,200	15,013,801	7.20	129,421,058	134,607,771	-3.85
Belly Freight						
Domestic Enplaned Belly Freight	277,541	331,870	-16.37	3,002,550	2,828,523	6.15
Domestic Deplaned Belly Freight	539,812	525,235	2.78	4,938,374	5,107,999	-3.32
International Enplaned Belly Freight	279,180	466,213	-40.12	2,735,361	2,527,915	8.21
International Deplaned Belly Freight	822,596	796,697	3.25	6,029,209	7,212,576	-16.41
South Terminal-Domestic Enplaned Belly Frght	0	0	0.00	0	0	0.00
South Terminal-Domestic Deplaned Belly Frght	0	0	0.00	0	0	0.00
Belly Freight Totals	1,919,129	2,120,015	-9.48	16,705,494	17,677,013	-5.50
Cargo Totals (Mail, Cargo, Belly Freight)	18,676,841	17,736,790	5.30	152,376,456	157,946,978	-3.53
<i>Enplaned Cargo Totals</i>	<i>7,631,357</i>	<i>7,811,011</i>	<i>-2.30</i>	<i>64,267,353</i>	<i>66,812,850</i>	<i>-3.81</i>
<i>Deplaned Cargo Totals</i>	<i>11,045,484</i>	<i>9,925,779</i>	<i>11.28</i>	<i>88,109,103</i>	<i>91,134,128</i>	<i>-3.32</i>
<i>Domestic Cargo Totals</i>	<i>14,613,666</i>	<i>13,484,297</i>	<i>8.38</i>	<i>133,273,758</i>	<i>135,683,037</i>	<i>-1.78</i>
<i>International Cargo Totals</i>	<i>4,063,175</i>	<i>4,252,493</i>	<i>-4.45</i>	<i>19,102,698</i>	<i>22,263,941</i>	<i>-14.20</i>

CURRENT CARGO RECORD = 40,215,518

RECORD SET = MARCH 2001

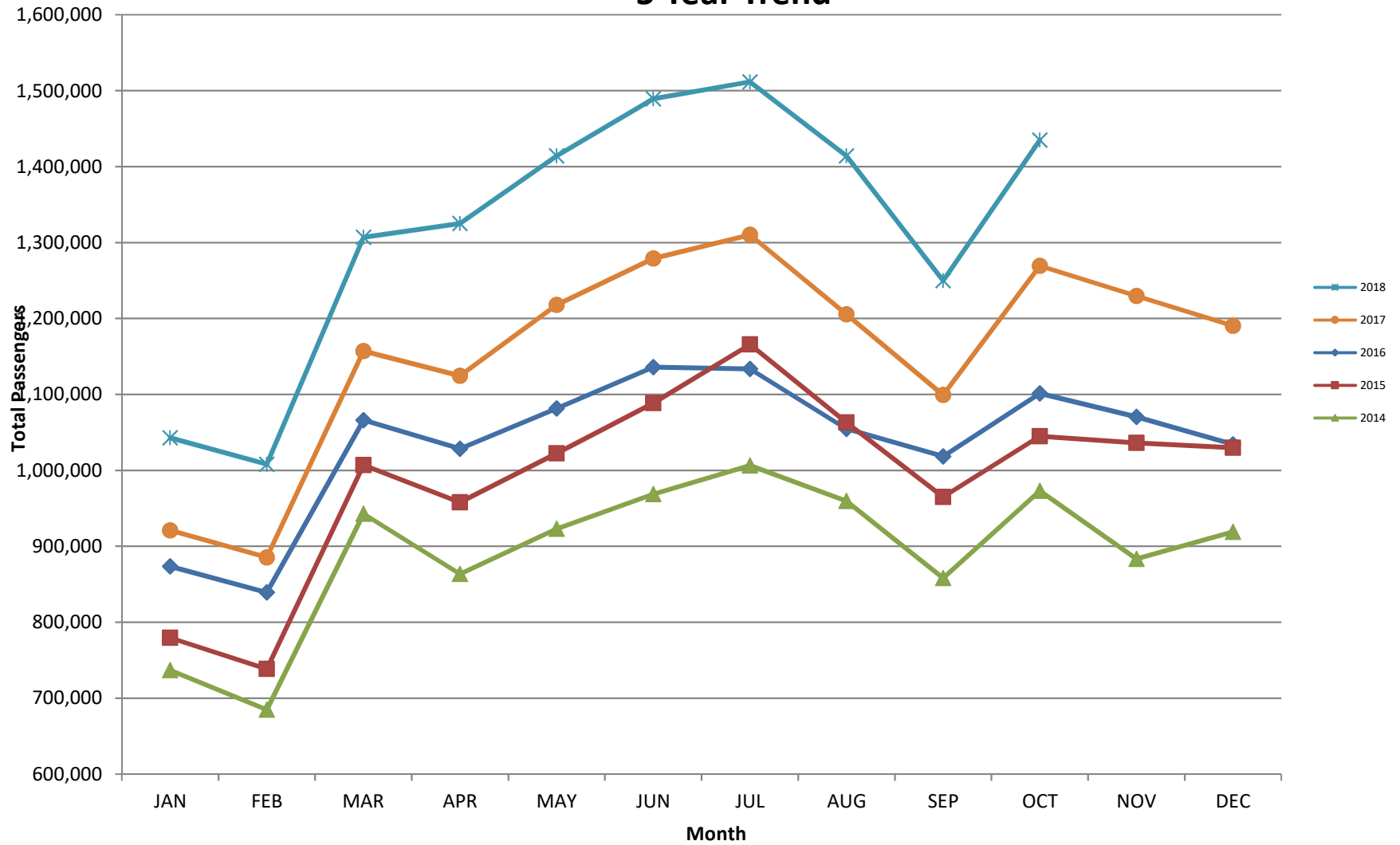
AUS – Airline Codes

October 2018

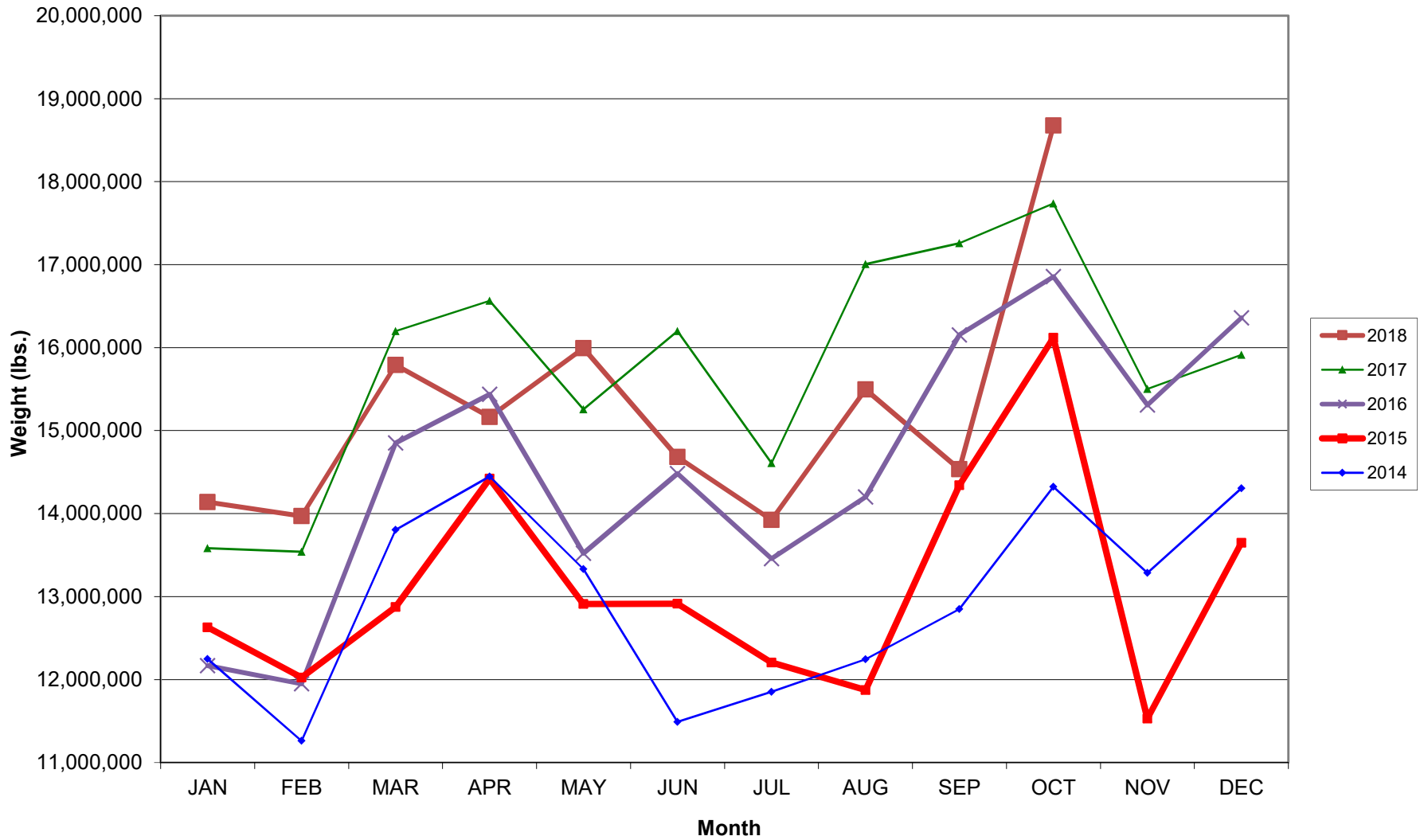
<u>Code</u>	<u>Carrier</u>
4O	ABC Aerolineas S.A. de C.V. dba Interjet Airlines
AM	Aerovias de Mexico S.A. de C.V. dba AeroMexico Airlines
AC	Air Canada
AS	Alaska Airlines, Inc. (Includes Virgin America. Merger effective 2/1/2018)
G4	Allegiant Air, LLC
AA	American Airlines, Inc.
BA	British Airways Plc
Y4	Concesionaria Vuela Compañía de Aviación, S.A.P.I. de C.V dba Volaris
DL	Delta Airlines
F9	Frontier Airlines
B6	JetBlue Airways Corp.
LL	Miami Air International
DY	Norwegian Air UK, Ltd.
WN	Southwest Airlines
SY	Sun Country Airlines/ MN Airlines, LLC
WQ	Swift Air
UA	United Airlines, Inc.
VC	VIA Airlines

AUSTIN PASSENGER TRAFFIC

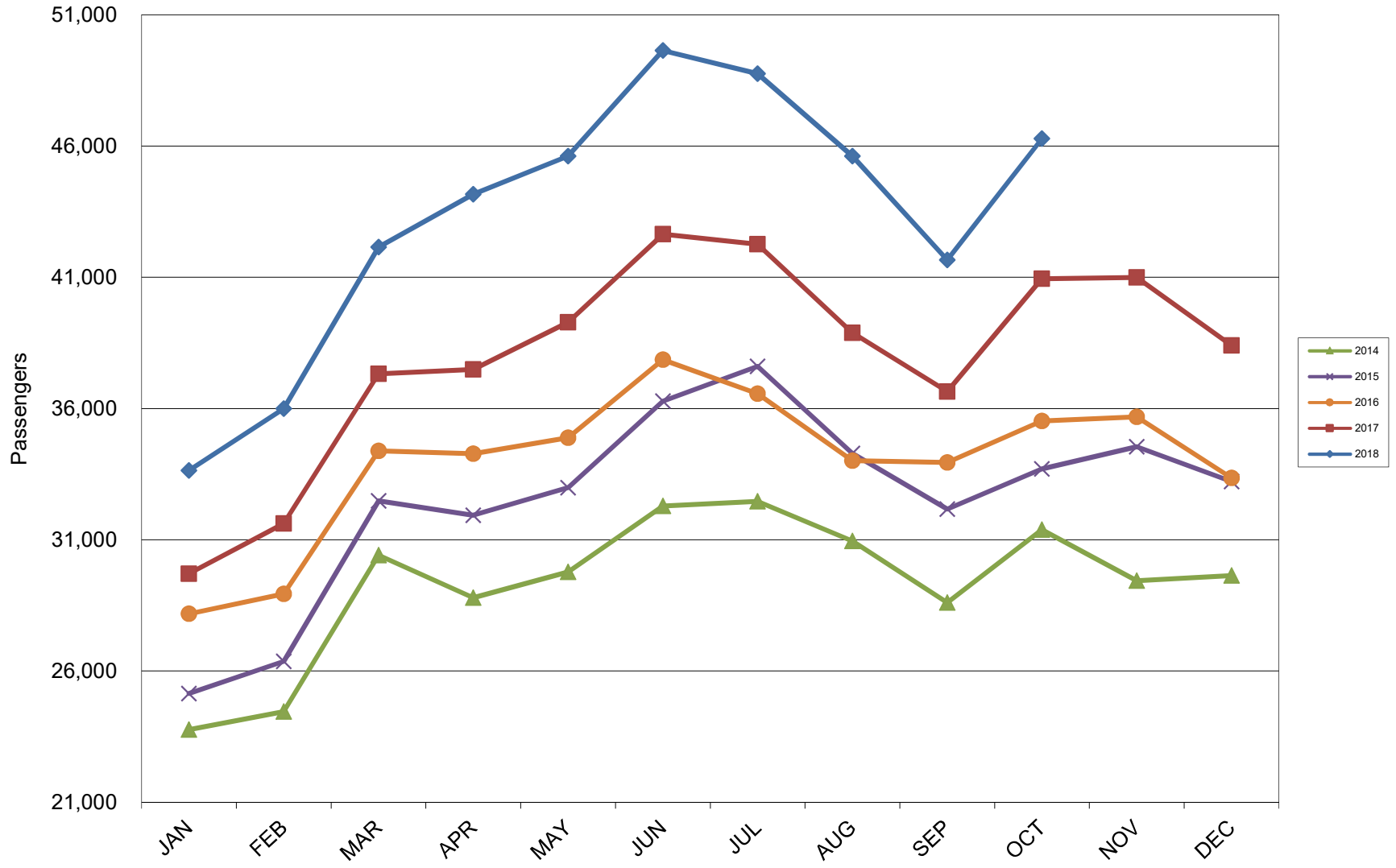
5 Year Trend



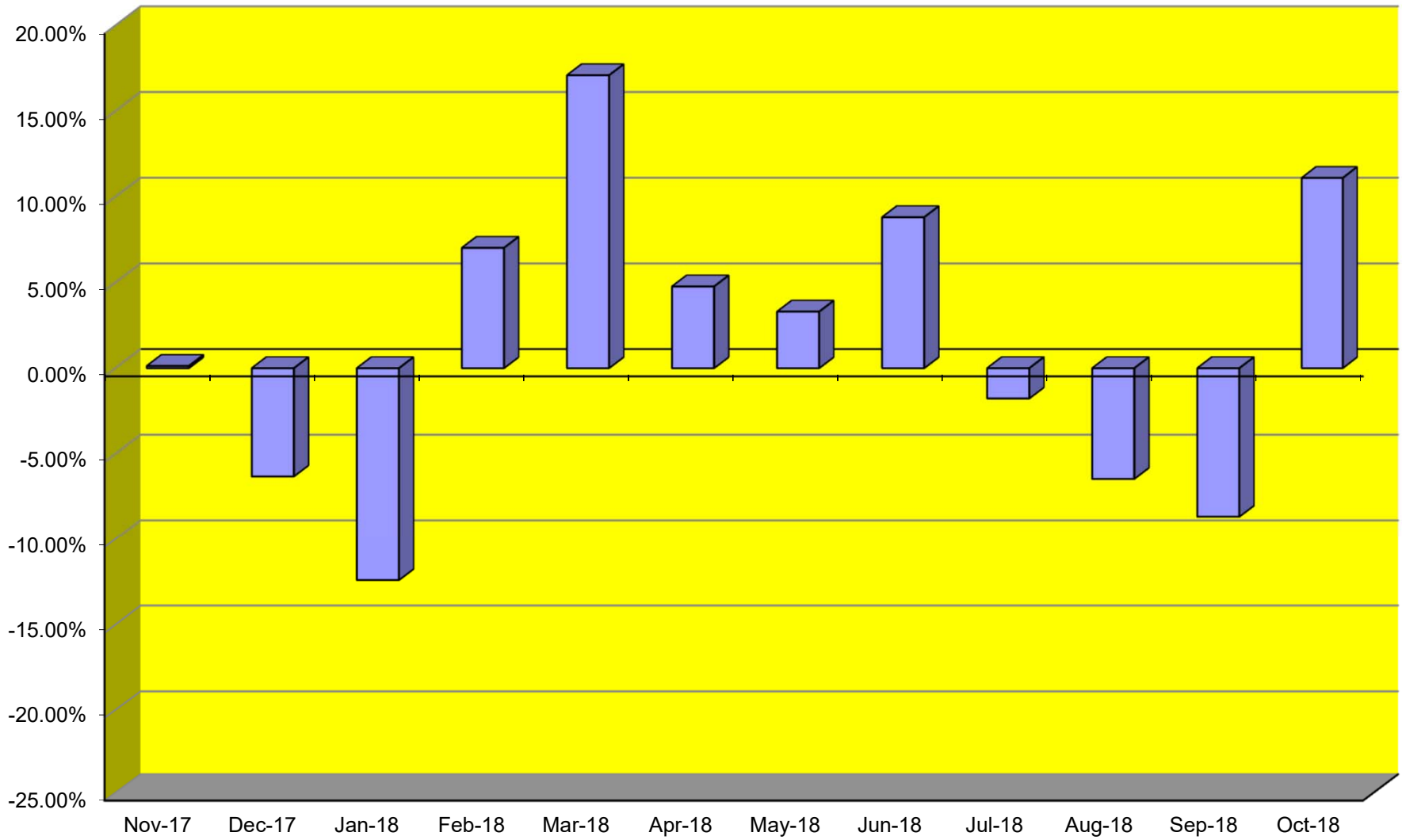
TOTAL CARGO POUNDAGE - AUSTIN, TEXAS



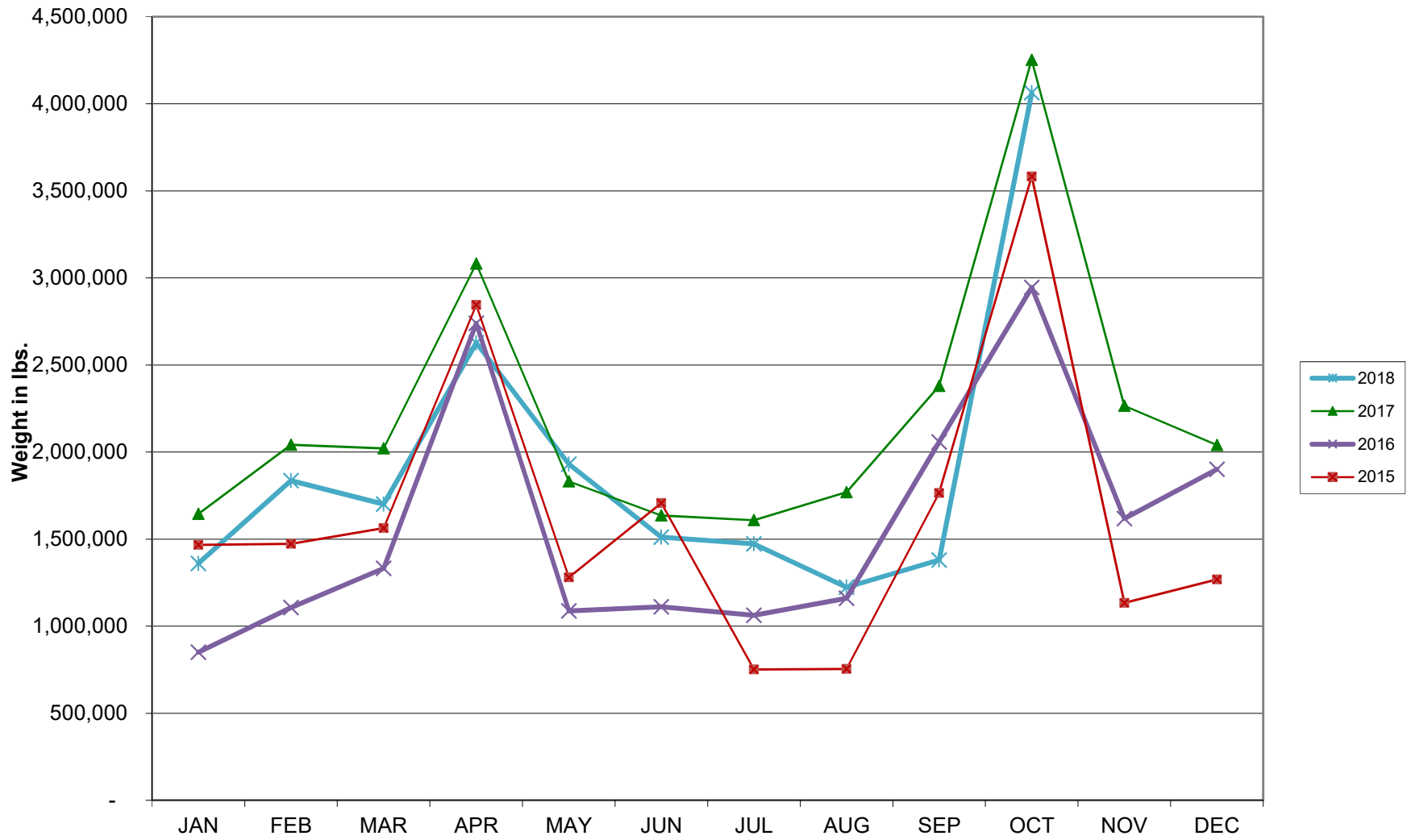
Average Daily Passengers



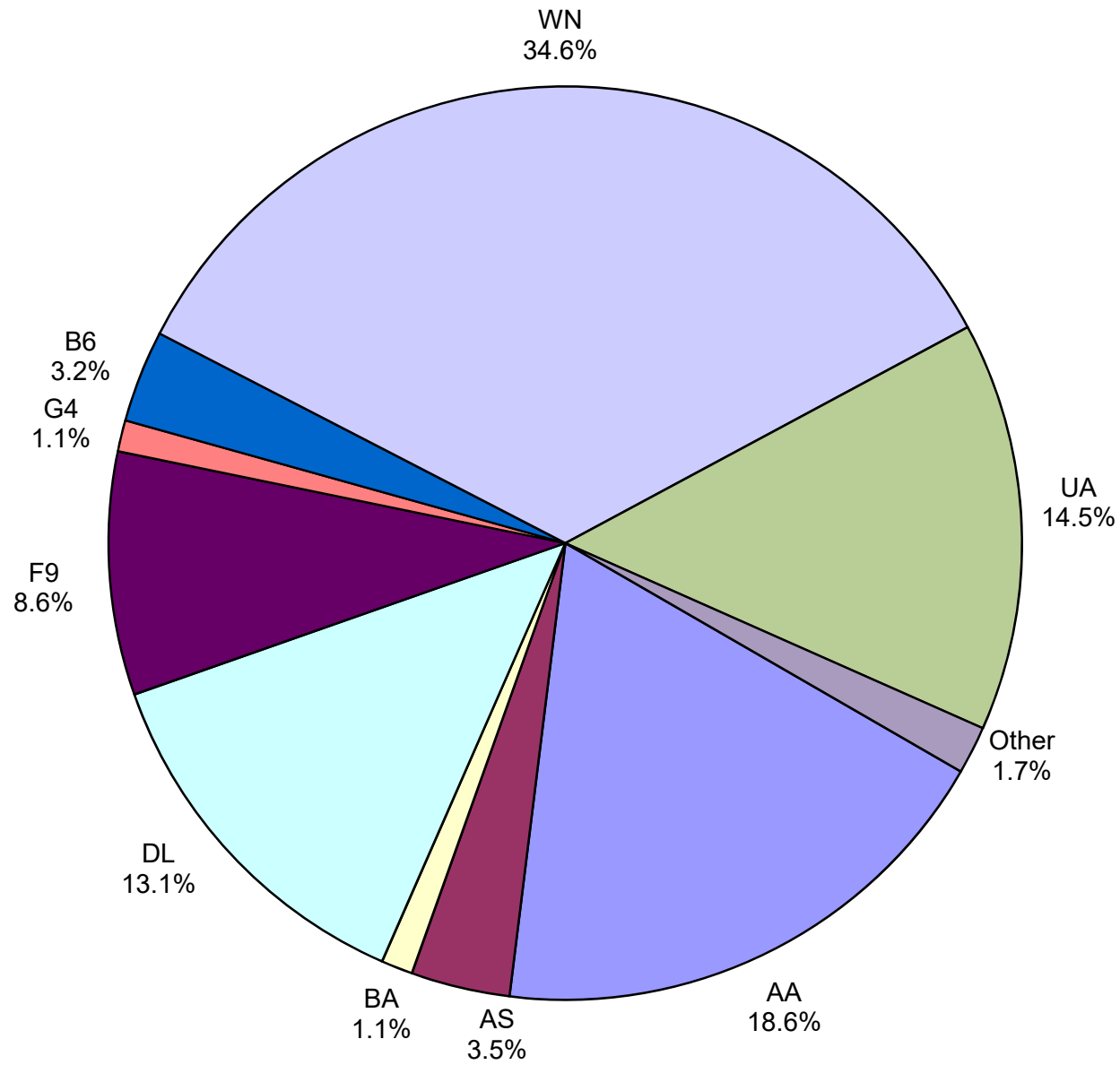
Monthly % Change in Average Daily Passengers



HISTORY OF INTERNATIONAL AIR CARGO



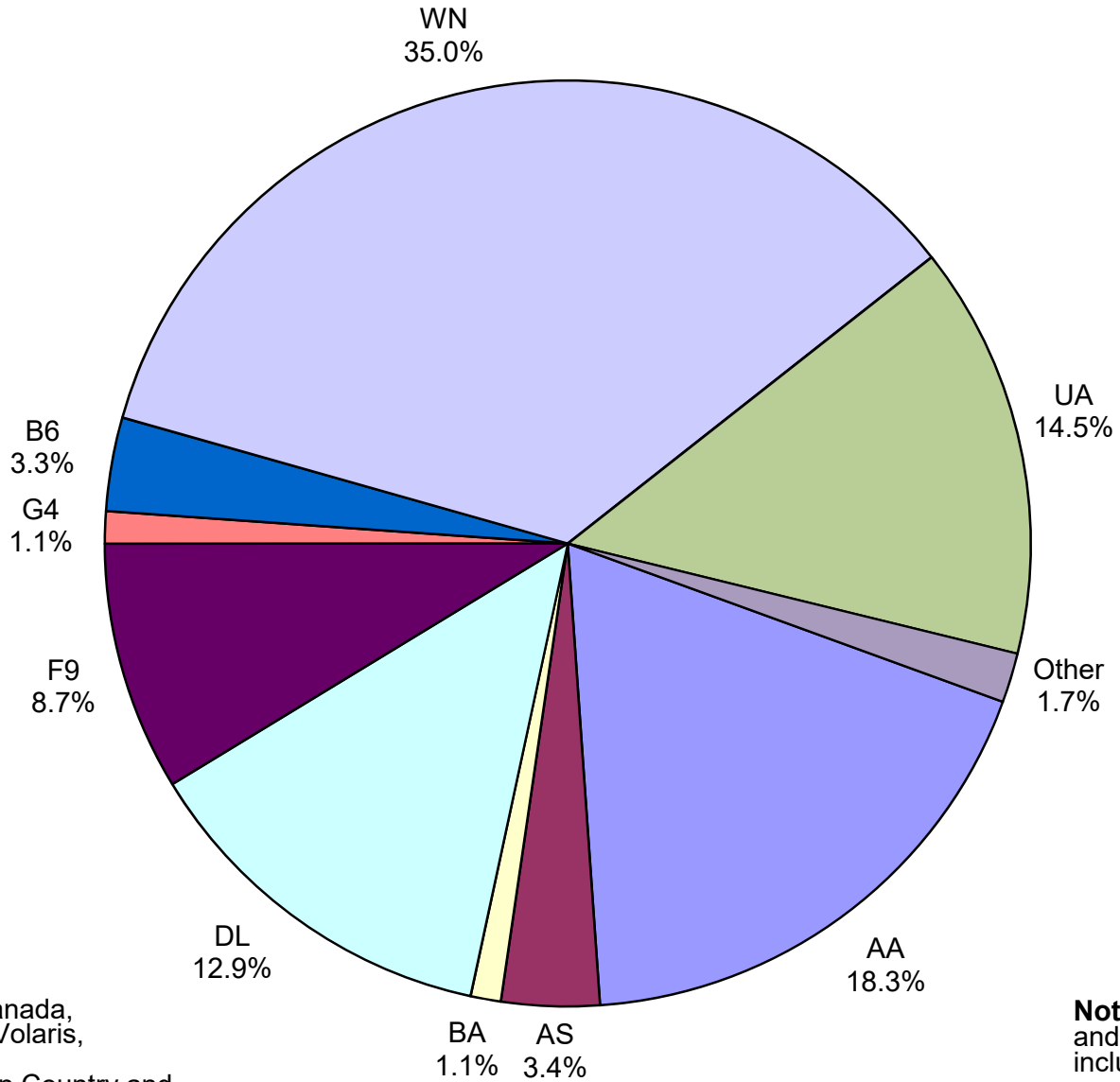
Total Passengers October 2018



Other: Aeromexico, Air Canada LLC, Interjet Airlines, Miami Air, Norwegian Air UK, Ltd., Sun Country, Swift Air, VIA Airlines and Concesionaria Vuéla dba Volaris

Note: American, Delta and United Airlines percentages include Affiliates.

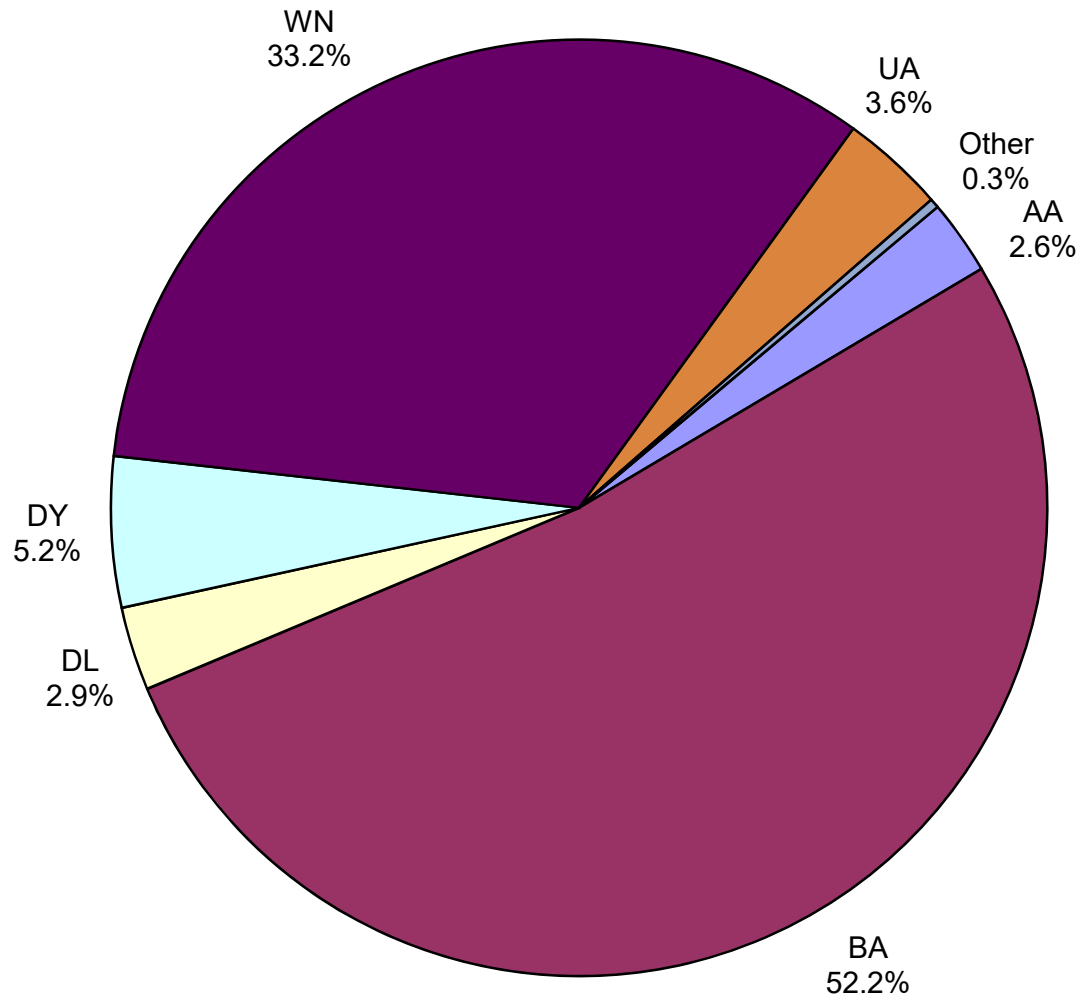
**All Passenger Carriers
Enplaned Revenue Passengers
October 2018**



Other: Aeromexico, Air Canada, Concesionaria Vuela dba Volaris, Interjet Airlines, Miami Air, Norwegian Air UK Ltd., Sun Country and VIA Airlines

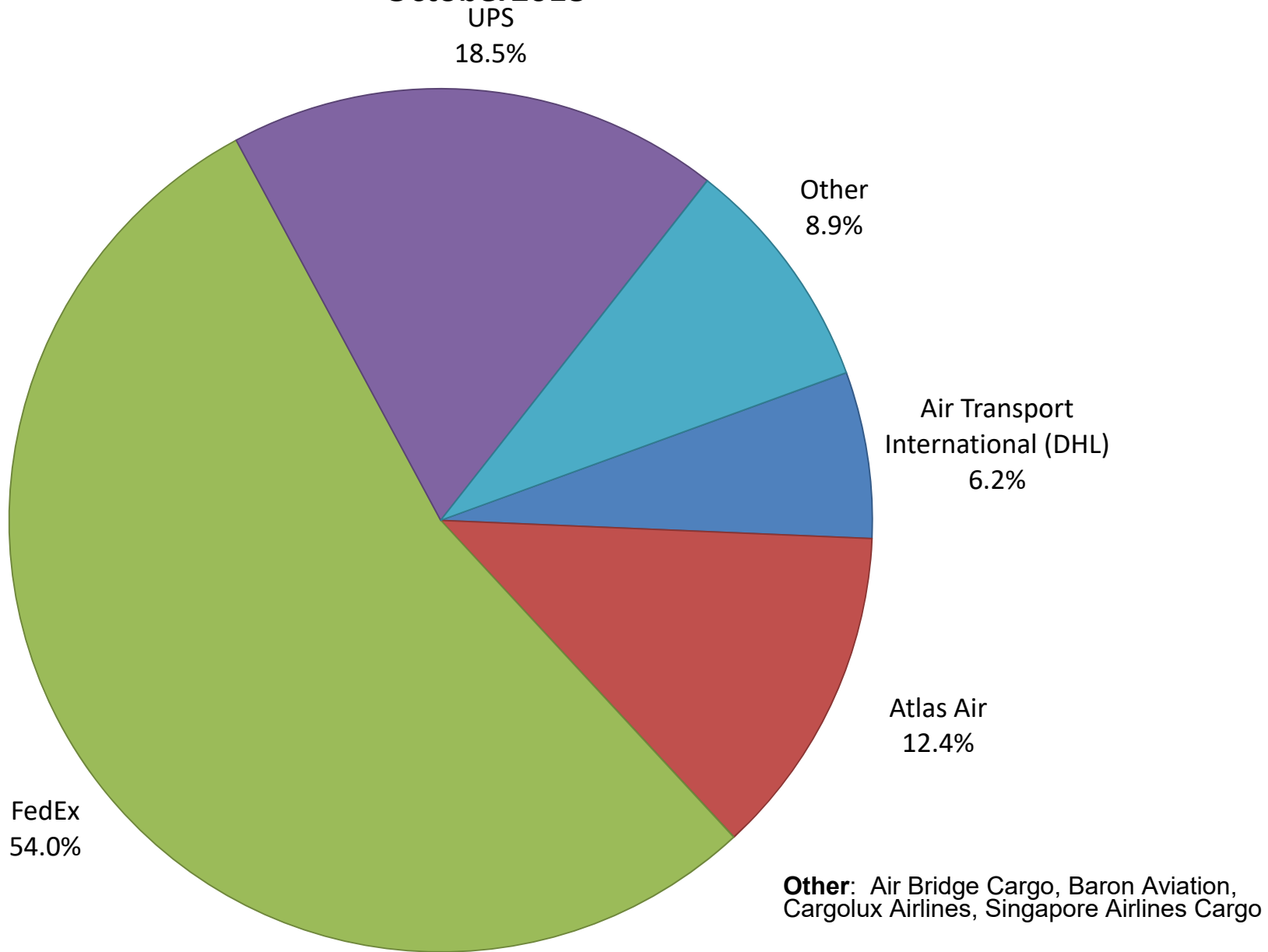
Note: American/US Airways, Delta and United Airlines percentages include Affiliates.

**AUS Belly Freight Market Shares
October 2018**

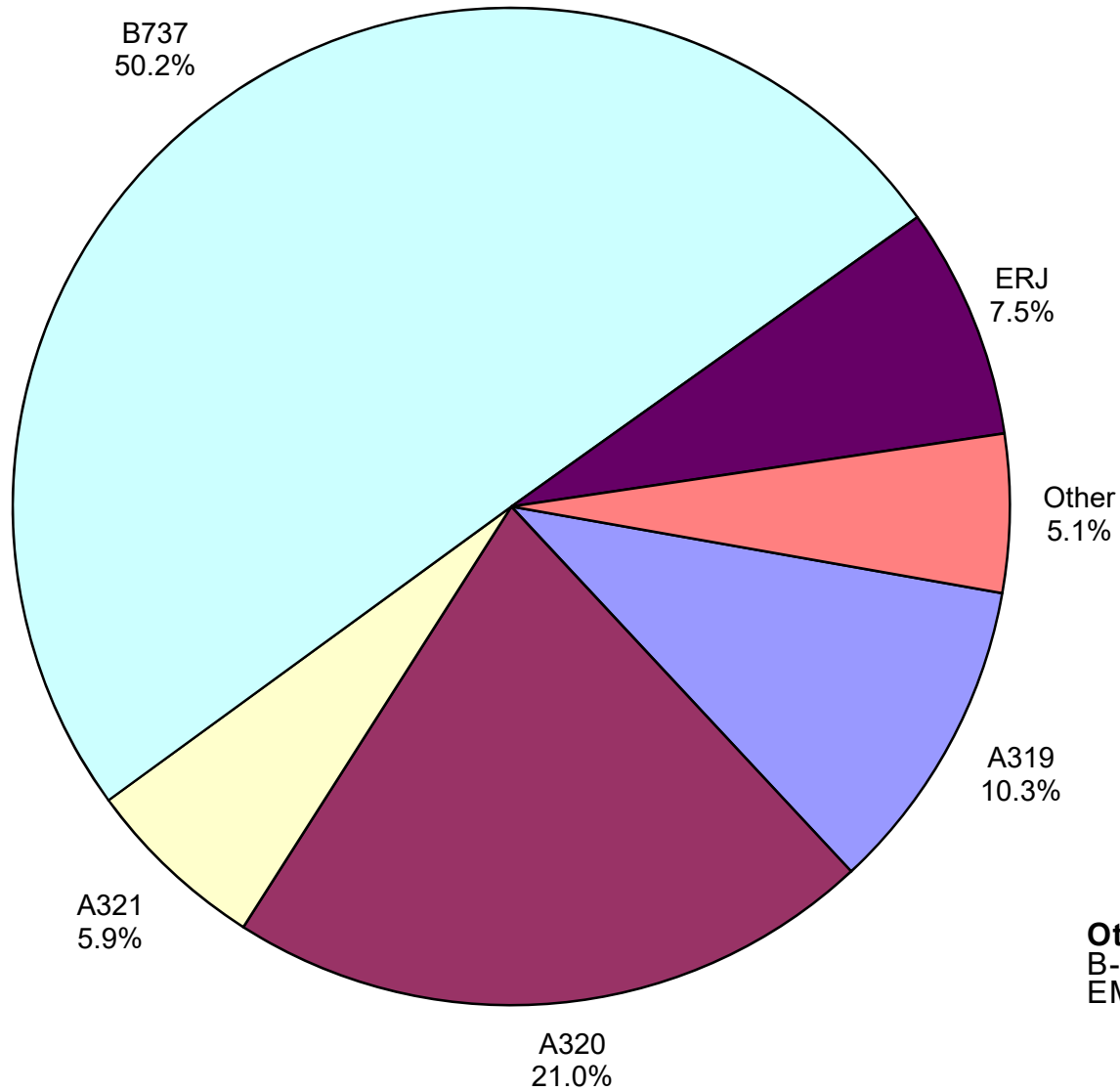


Other = Alaska Airlines

Air Cargo Market Share October 2018

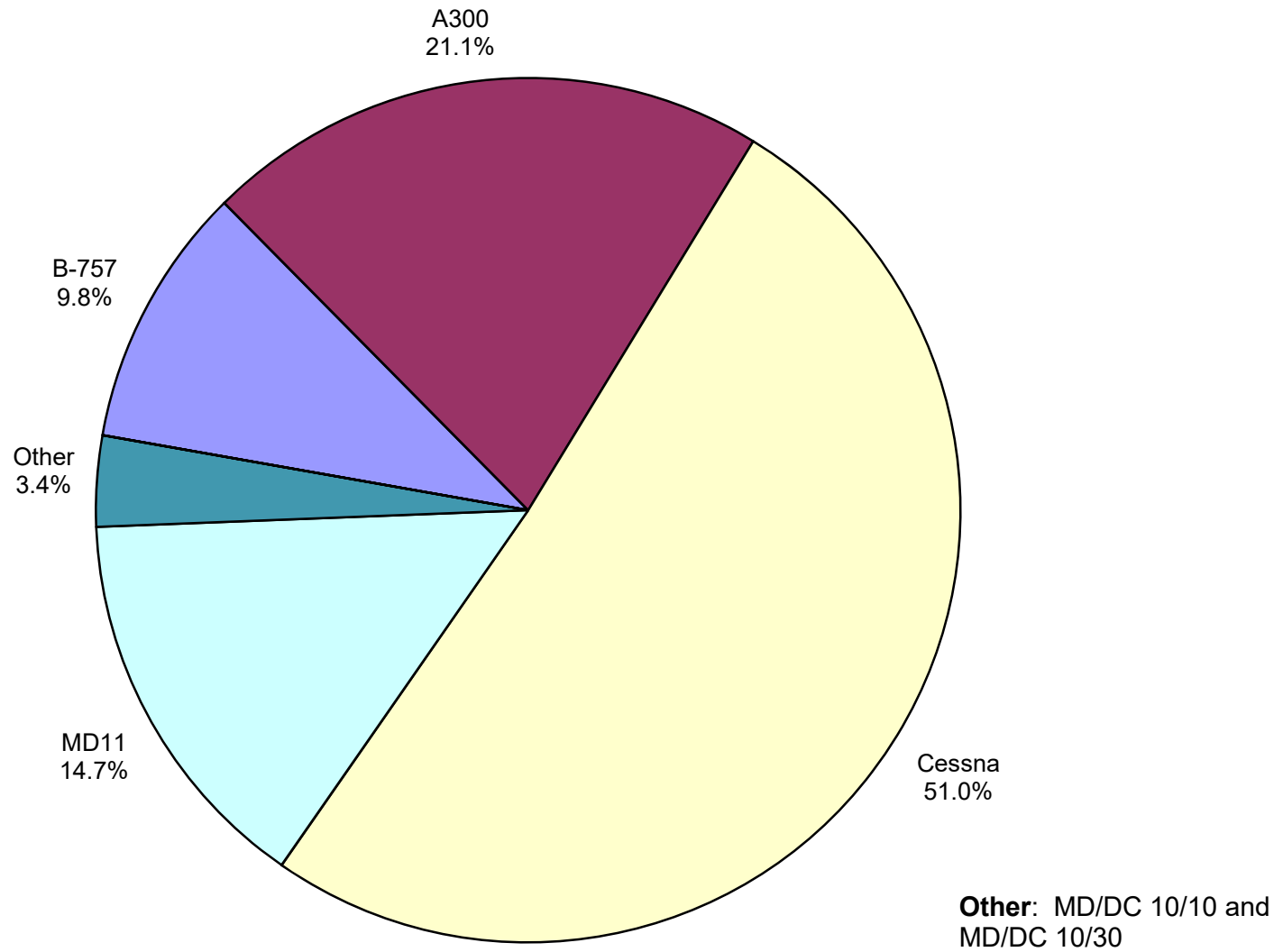


**AUS Scheduled Passenger Aircraft Fleet Mix
October 2018**



Other: B-717, B-747-400,
B-757, B-777, B-787-900, CRJ,
EMB, MD-83 and MD-88

**AUS Scheduled Cargo Aircraft Fleet Mix
October 2018**



Austin-Bergstrom International Airport

PAX Detail Report - October, 2018

Company	10/2018	10/2017	Period		YTD 2018	YTD 2017	YTD		2018 Share	2017 Share	Share Diff
			Difference	Change			Difference	Change			
ABC Aerolineas S.A. de C.V.	88	0	88	0.0	129	0	129	0.0	0.0	0.0	0.0
Aerovías de Mexico S.A. de C.V.	3,488	3,092	396	12.8	35,633	30,513	5,120	16.8	0.3	0.3	0.0
Air Canada	4,818	3,901	917	23.5	39,907	34,846	5,061	14.5	0.3	0.3	0.0
Alaska Airlines	50,235	30,640	19,595	64.0	461,242	227,532	233,710	102.7	3.5	2.0	1.5
Allegiant Air	15,841	26,045	-10,204	-39.2	243,311	220,122	23,189	10.5	1.8	1.9	-0.1
American Airlines	267,149	239,191	27,958	11.7	2,339,503	2,177,817	161,686	7.4	17.7	19.0	-1.3
British Airways	16,001	11,746	4,255	36.2	144,025	108,285	35,740	33.0	1.1	0.9	0.1
Concesionaria Vuela Compañía de Aviación, S.A.P.I. de C.V.	1,291	1,185	106	8.9	13,263	12,844	419	3.3	0.1	0.1	0.0
Condor Airlines	0	699	-699	-100.0	18,876	19,745	-869	-4.4	0.1	0.2	0.0
Delta Air Lines	187,333	173,563	13,770	7.9	1,762,862	1,471,108	291,754	19.8	13.4	12.8	0.5
Elite Airways, LLC	0	29	-29	-100.0	0	29	-29	-100.0	0.0	0.0	0.0
Frontier Airlines	123,435	43,521	79,914	183.6	981,213	391,684	589,529	150.5	7.4	3.4	4.0
Iberia Airlines	0	0	0	0.0	0	245	-245	-100.0	0.0	0.0	0.0
JetBlue Airways	46,721	50,348	-3,627	-7.2	490,057	504,074	-14,017	-2.8	3.7	4.4	-0.7
Miami Air International	470	333	137	41.1	779	333	446	133.9	0.0	0.0	0.0
Norwegian Air UK LTD	6,851	0	6,851	0.0	54,123	0	54,123	0.0	0.4	0.0	0.4
Scandinavian Airlines	0	0	0	0.0	697	0	697	0.0	0.0	0.0	0.0
Southwest Airlines	495,908	462,344	33,564	7.3	4,612,516	4,260,756	351,760	8.3	35.0	37.2	-2.2
Sun Country Airlines	3,939	1,259	2,680	212.9	23,584	5,578	18,006	322.8	0.2	0.0	0.1
Swift Air	86	0	86	0.0	1,920	1,272	648	50.9	0.0	0.0	0.0
Texas Sky	0	0	0	0.0	0	604	-604	-100.0	0.0	0.0	0.0
United Airlines	207,852	207,917	-65	0.0	1,939,849	1,868,243	71,606	3.8	14.7	16.3	-1.6
Vacation Express	0	0	0	0.0	2,758	0	2,758	0.0	0.0	0.0	0.0
VIA Airlines	3,250	357	2,893	810.4	18,832	2,507	16,325	651.2	0.1	0.0	0.1
Virgin America	0	12,983	-12,983	-100.0	11,117	130,728	-119,611	-91.5	0.1	1.1	-1.1
Xtra Airways/Casino Express	0	0	0	0.0	0	136	-136	-100.0	0.0	0.0	0.0
Report Totals	1,434,756	1,269,153	165,603	13.0%	13,196,196	11,469,001	1,727,195	15.1%			

Statistics Included in Report:

Domestic Passengers:	Enplaned Revenue, Deplaned Revenue, Enplaned Non-Revenue, Deplaned Non-Revenue
International Passengers:	Enplaned Revenue, Deplaned Revenue, Enplaned Non-Revenue, Deplaned Non-Revenue
International Pre-Cleared Passengers:	Enplaned Revenue, Deplaned Revenue, Enplaned Non-Revenue, Deplaned Non-Revenue
South Terminal Domestic Passengers:	Enplaned Revenue, Deplaned Revenue, Enplaned Non-Revenue, Deplaned Non-Revenue

Austin-Bergstrom International Airport

Summary Landing Report

Landing Type: Total

Month	2018		2017		2016		% Change 2018 - 2017		% Change 2017 - 2016	
	Count	Weight	Count	Weight	Count	Weight	Count	Weight	Count	Weight
January	5,086	688,923,110	4,768	612,688,871	4,622	560,718,408	6.67%	12.44%	3.16%	9.27%
February	4,706	637,500,756	4,357	552,711,639	4,387	527,452,920	8.01%	15.34%	-0.68%	4.79%
March	5,643	760,648,260	5,307	685,661,659	5,151	639,655,137	6.33%	10.94%	3.03%	7.19%
April	5,797	793,367,736	5,179	689,402,051	4,892	614,643,711	11.93%	15.08%	5.87%	12.16%
May	6,117	831,431,763	5,529	736,484,083	5,096	630,853,941	10.63%	12.89%	8.50%	16.74%
June	6,211	852,438,818	5,603	752,628,599	5,179	651,537,449	10.85%	13.26%	8.19%	15.52%
July	6,346	869,502,671	5,698	763,088,836	5,233	663,015,597	11.37%	13.95%	8.89%	15.09%
August	6,245	861,046,997	5,490	741,110,019	5,181	660,099,361	13.75%	16.18%	5.96%	12.27%
September	5,737	790,731,351	5,046	679,381,339	4,738	623,397,035	13.69%	16.39%	6.50%	8.98%
October	6,078	846,310,860	5,448	743,973,610	4,923	649,182,343	11.56%	13.76%	10.66%	14.60%
November			5,289	718,179,948	4,775	624,303,554			10.76%	15.04%
December			5,442	737,424,963	4,893	629,611,090			11.22%	17.12%
Totals for Selected Period	57,966	7,931,902,322	52,425	6,957,130,706	49,402	6,220,555,902	10.57%	14.01%	6.12%	11.84%
Yearly Totals	57,966	7,931,902,322	63,156	8,412,735,617	59,070	7,474,470,546			6.92%	12.55%