

# Austin-Bergstrom International Airport

## Aviation Activity Report

### Calendar Year 2016 vs 2015

	09/2016	09/2015	Percent Change	01/2016 - 09/2016	01/2015 - 09/2015	Percent Change
<b><u>Passenger Activity</u></b>						
Domestic Enplaned Revenue	485,437	465,389	4.31	4,410,162	4,206,056	4.85
Domestic Deplaned Revenue	494,179	467,838	5.63	4,412,062	4,201,842	5.00
International Enplaned Revenue	6,405	5,347	19.79	84,772	84,737	0.04
International Deplaned Revenue	8,064	5,454	47.85	90,699	85,412	6.19
Domestic Enplaned Non-Revenue	10,371	9,270	11.88	100,092	98,011	2.12
Domestic Deplaned Non-Revenue	9,980	9,135	9.25	100,722	95,325	5.66
International Enplaned Non-Revenue	66	49	34.69	736	680	8.24
International Deplaned Non-Revenue	59	44	34.09	739	609	21.35
Intl Enplaned Pre-Cleared Revenue	1,688	975	73.13	14,355	6,407	124.05
Intl Deplaned Pre-Cleared Revenue	2,014	1,434	40.45	16,092	7,893	103.88
Intl Enplaned Pre-Cleared Non-Revenue	14	12	16.67	238	97	145.36
Intl Deplaned Pre-Cleared Non-Revenue	15	28	-46.43	262	117	123.93
<b>Passenger Totals</b>	<b>1,018,292</b>	<b>964,975</b>	<b>5.53</b>	<b>9,230,931</b>	<b>8,787,186</b>	<b>5.05</b>
<i>Enplaned Passenger Totals</i>	<i>503,981</i>	<i>481,042</i>	<i>4.77</i>	<i>4,610,355</i>	<i>4,395,988</i>	<i>4.88</i>
<i>Deplaned Passenger Totals</i>	<i>514,311</i>	<i>483,933</i>	<i>6.28</i>	<i>4,620,576</i>	<i>4,391,198</i>	<i>5.22</i>
<i>Domestic Passenger Totals</i>	<i>999,967</i>	<i>951,632</i>	<i>5.08</i>	<i>9,023,038</i>	<i>8,601,234</i>	<i>4.90</i>
<i>International Passenger Totals</i>	<i>18,325</i>	<i>13,343</i>	<i>37.34</i>	<i>207,893</i>	<i>185,952</i>	<i>11.80</i>

**CURRENT PASSENGER RECORD = 1,165,811    RECORD SET = JULY 2015**

### **Aircraft Operations**

Air Carrier	8,904	9,196	-3.18	84,950	84,868	0.10
Commuter & Air Taxi	1,550	1,372	12.97	12,155	11,319	7.39
Military	980	867	13.03	8,099	6,414	26.27
General Aviation						
Itinerant	4,470	4,493	-0.51	36,153	36,976	-2.23
Local	204	396	-48.48	1,966	2,929	-32.88
Total G.A.	4,674	4,889	-4.40	38,119	39,905	-4.48
Total Operations	16,108	16,324	-1.32	143,323	142,506	0.57

# Austin-Bergstrom International Airport

## Aviation Activity Report

### Calendar Year 2016 vs 2015

<u>Cargo Activity</u>	09/2016	09/2015	Percent Change	01/2016 - 09/2016	01/2015 - 09/2015	Percent Change
<b>Mail</b>						
Domestic Enplaned Mail	152,644	240,799	-36.61	1,171,438	1,894,933	-38.18
Domestic Deplaned Mail	283,359	290,365	-2.41	2,061,721	2,723,762	-24.31
International Enplaned Mail	0	0	0.00	0	0	0.00
International Deplaned Mail	0	0	0.00	2	0	0.00
<b>Mail Totals</b>	<b>436,003</b>	<b>531,164</b>	<b>-17.92</b>	<b>3,233,161</b>	<b>4,618,695</b>	<b>-30.00</b>
<b>Cargo</b>						
Domestic Enplaned Cargo	6,233,823	6,299,628	-1.04	46,334,423	46,873,972	-1.15
Domestic Deplaned Cargo	6,743,432	5,030,957	30.04	57,821,566	44,502,138	29.93
International Enplaned Cargo	304,656	302,026	0.87	3,364,640	4,309,721	-21.93
International Deplaned Cargo	1,072,591	1,087,309	-1.35	3,355,847	3,556,262	-5.64
<b>Cargo Totals</b>	<b>14,354,502</b>	<b>12,719,920</b>	<b>12.85</b>	<b>110,876,476</b>	<b>99,242,093</b>	<b>11.72</b>
<b>Belly Freight</b>						
Domestic Enplaned Belly Freight	232,816	240,067	-3.02	2,138,684	2,283,061	-6.32
Domestic Deplaned Belly Freight	447,695	476,166	-5.98	4,183,888	4,307,212	-2.86
International Enplaned Belly Freight	106,311	109,369	-2.80	1,336,066	2,498,794	-46.53
International Deplaned Belly Freight	574,226	265,549	116.24	4,450,161	3,239,917	37.35
<b>Belly Freight Totals</b>	<b>1,361,048</b>	<b>1,091,151</b>	<b>24.74</b>	<b>12,108,799</b>	<b>12,328,984</b>	<b>-1.79</b>
<b>Cargo Totals (Mail, Cargo, Belly Freight)</b>	<b>16,151,553</b>	<b>14,342,235</b>	<b>12.62</b>	<b>126,218,436</b>	<b>116,189,772</b>	<b>8.63</b>
<i>Enplaned Cargo Totals</i>	<i>7,030,250</i>	<i>7,191,889</i>	<i>-2.25</i>	<i>54,345,251</i>	<i>57,860,481</i>	<i>-6.08</i>
<i>Deplaned Cargo Totals</i>	<i>9,121,303</i>	<i>7,150,346</i>	<i>27.56</i>	<i>71,873,185</i>	<i>58,329,291</i>	<i>23.22</i>
<i>Domestic Cargo Totals</i>	<i>14,093,769</i>	<i>12,577,982</i>	<i>12.05</i>	<i>113,711,720</i>	<i>102,585,078</i>	<i>10.85</i>
<i>International Cargo Totals</i>	<i>2,057,784</i>	<i>1,764,253</i>	<i>16.64</i>	<i>12,506,716</i>	<i>13,604,694</i>	<i>-8.07</i>

CURRENT CARGO RECORD = 40,215,518

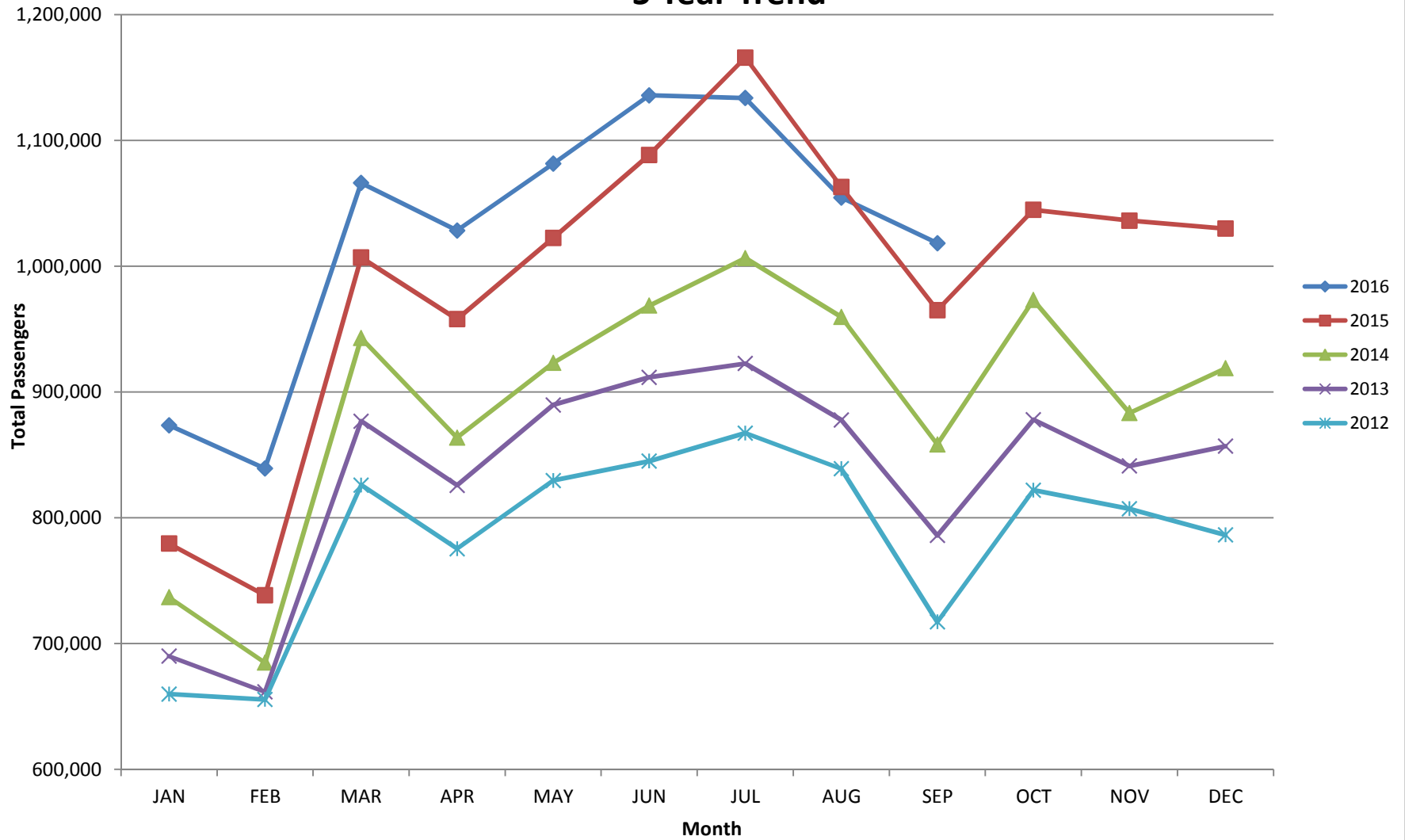
RECORD SET = MARCH 2001

**AUS – Airline Codes**  
September 2016

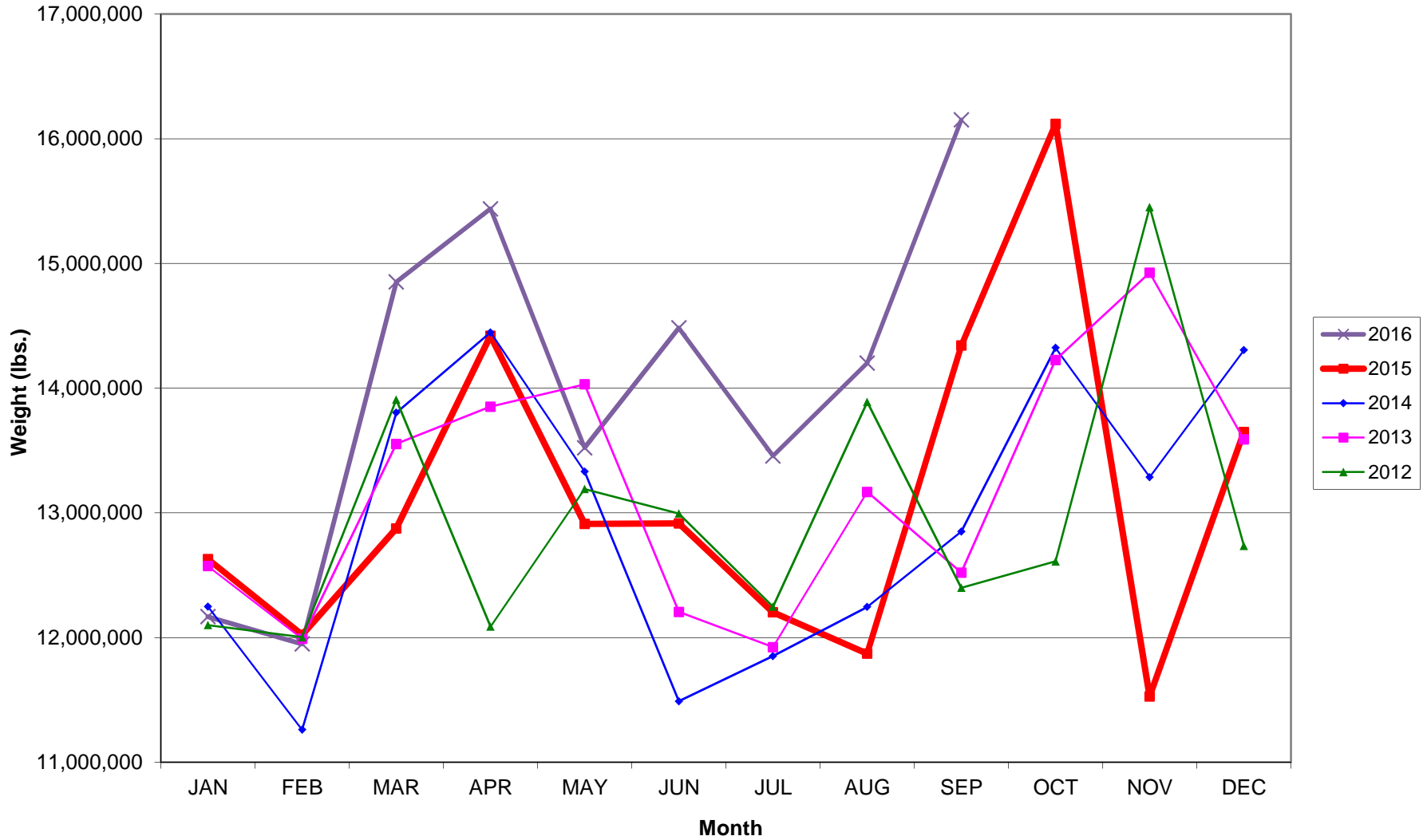
<b><u>Code</u></b>	<b><u>Carrier</u></b>
AC	Air Canada
AS	Alaska Airlines, Inc.
G4	Allegiant Air, LLC
AA	American Airlines, Inc.
BA	British Airways Plc
DE	Condor Airlines (Flugdienst) GmbH
DL	Delta Airlines
F9	Frontier Airlines
B6	JetBlue Airways Corp.
P1	Public Charters, Inc. dba Texas Sky
WN	Southwest Airlines
SY	Sun Country Airlines/ MN Airlines, LLC
UA	United Airlines, Inc.
VX	Virgin America Inc.
Y4	Volaris/Concesionaria Vuela Compañía de Aviación, S.A.P.I. de C.V.

# AUSTIN PASSENGER TRAFFIC

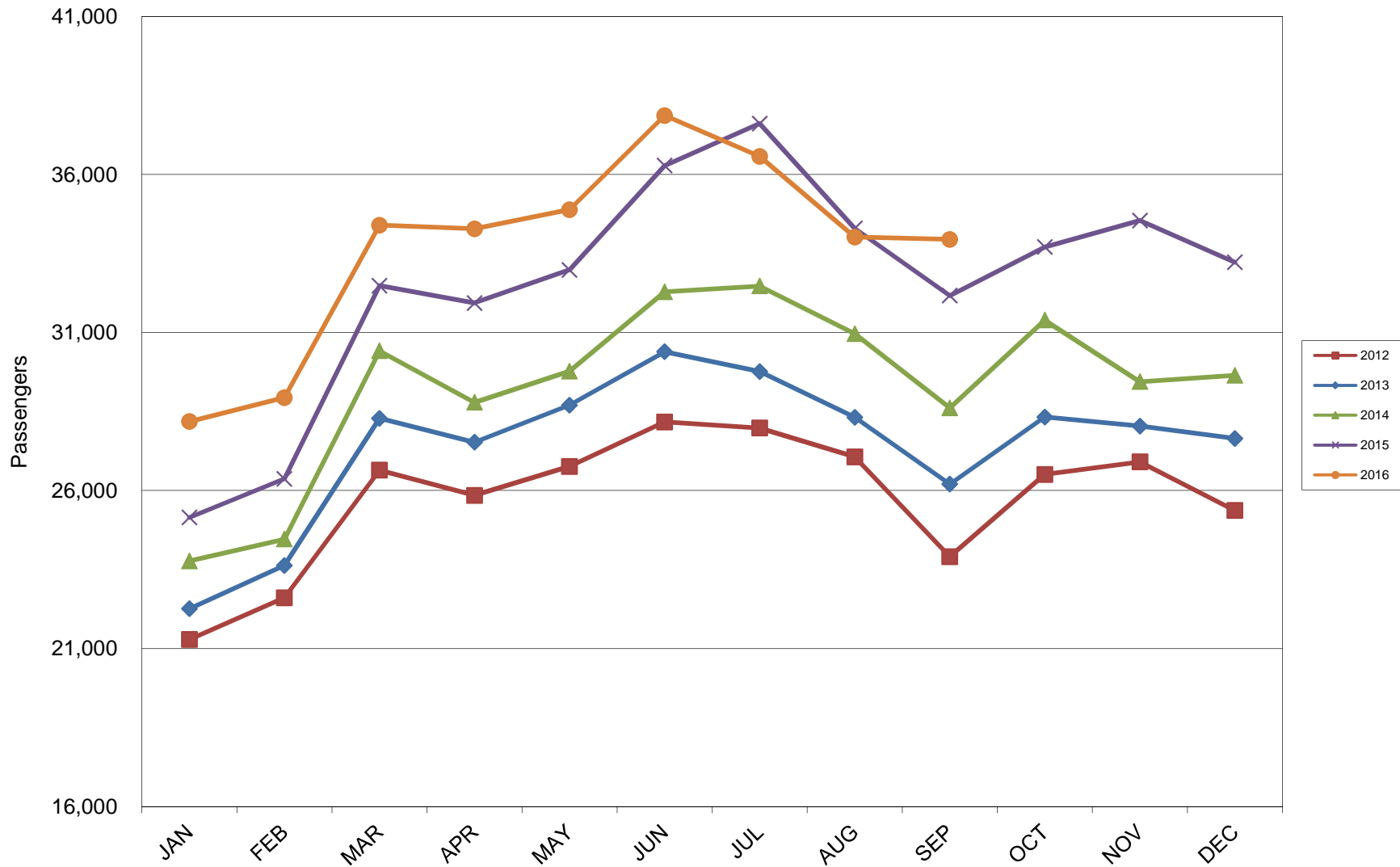
## 5 Year Trend



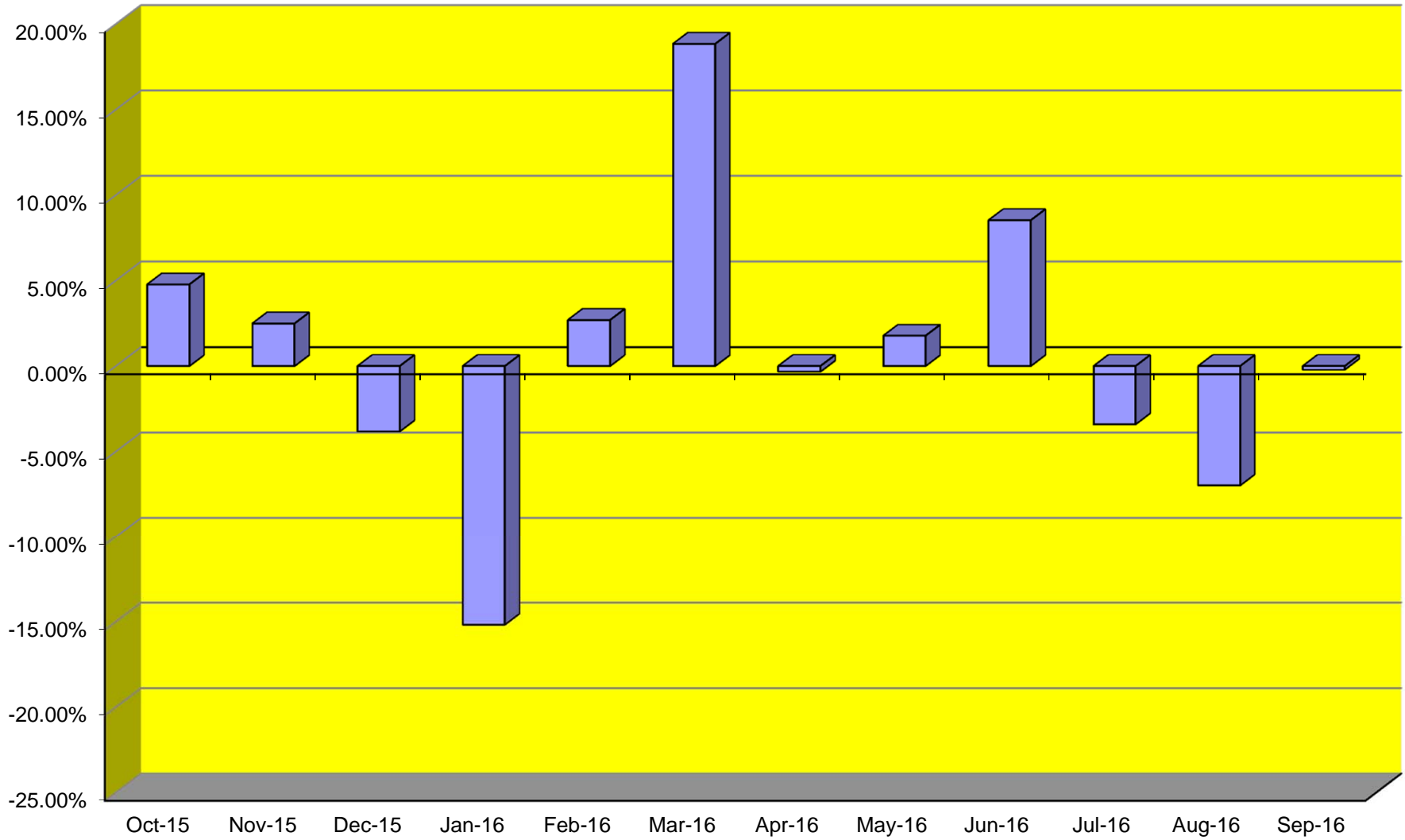
### TOTAL CARGO POUNDAGE - AUSTIN, TEXAS



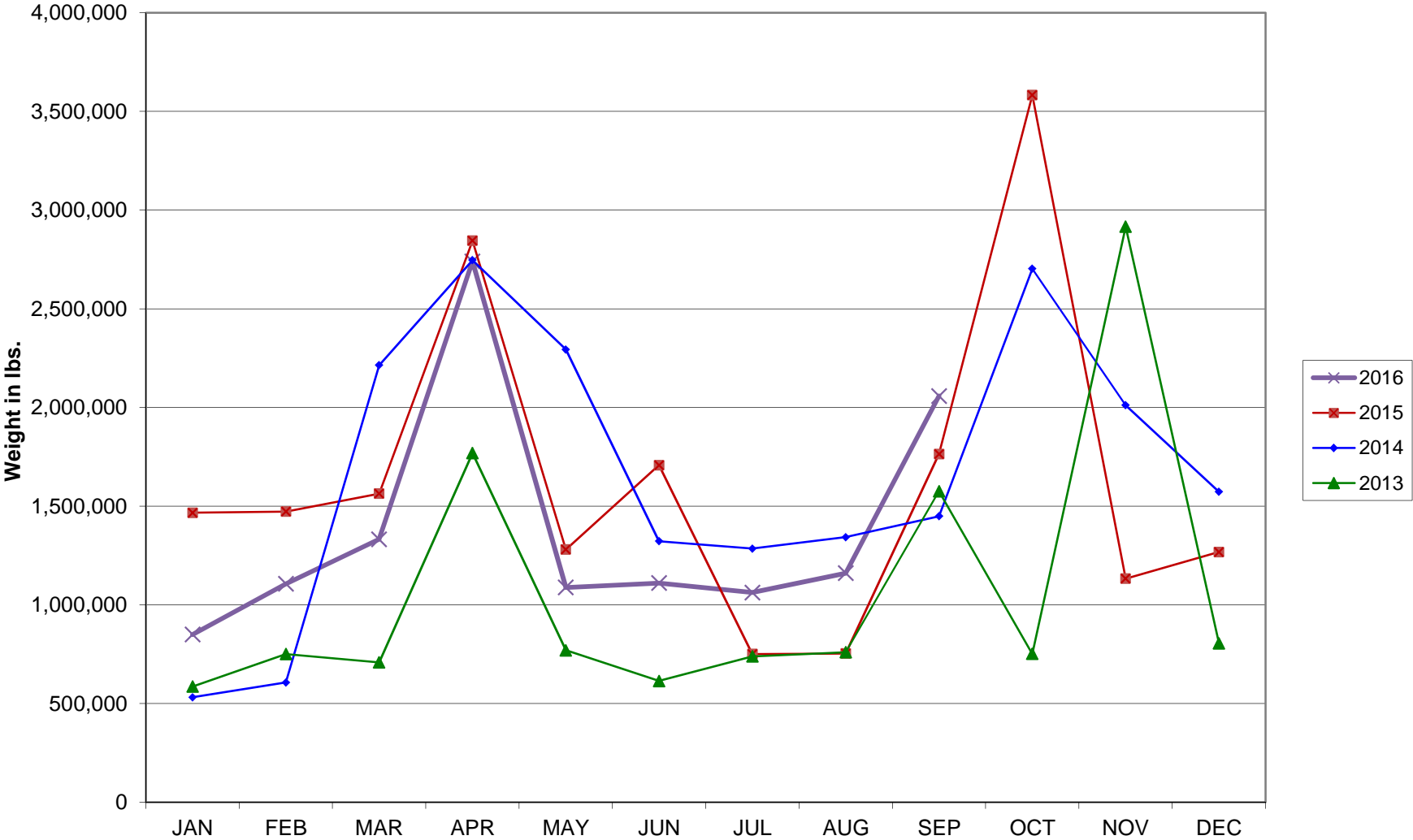
Average Daily Passengers



**Monthly % Change in Average Daily Passengers**

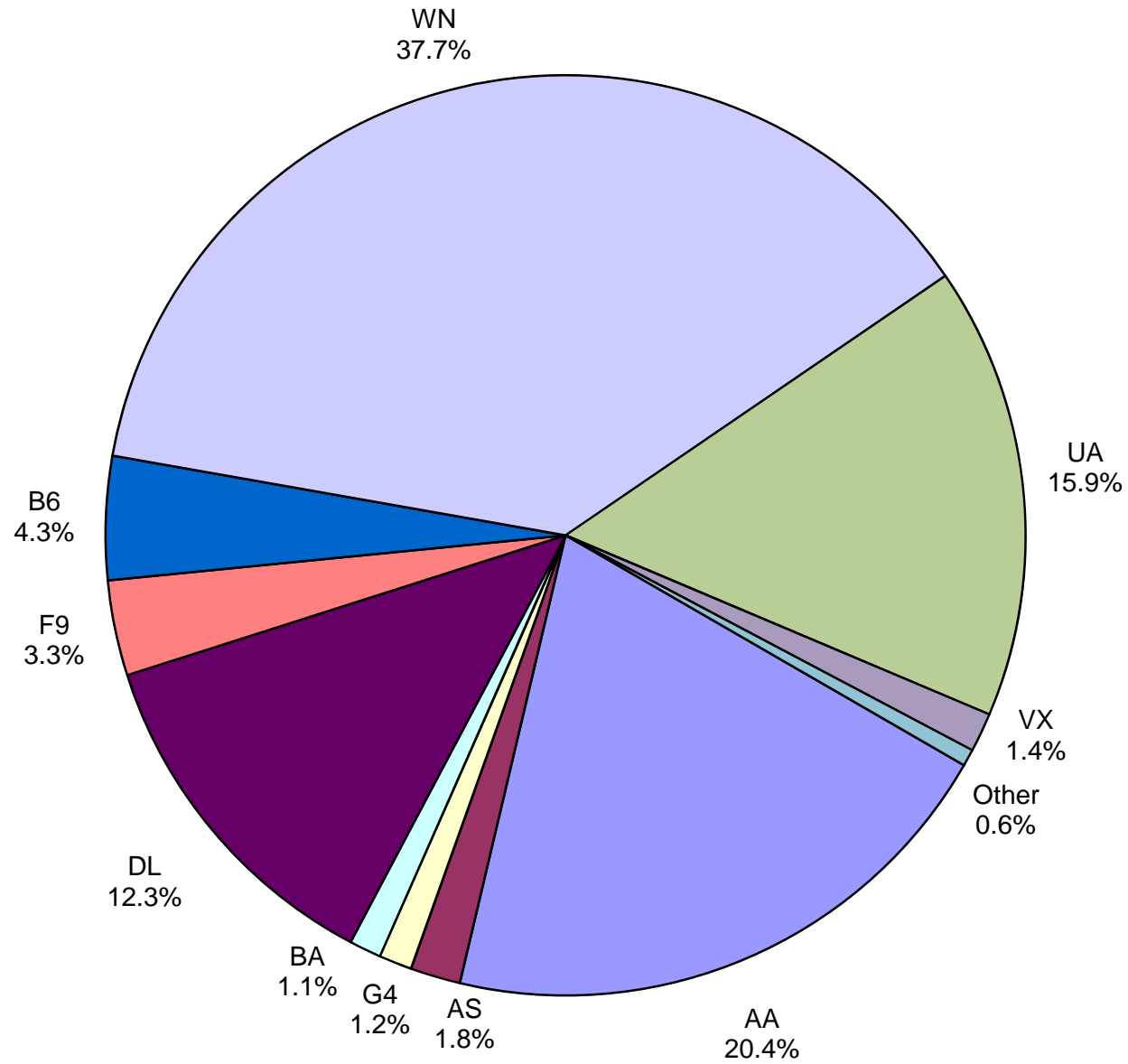


# HISTORY OF INTERNATIONAL AIR CARGO





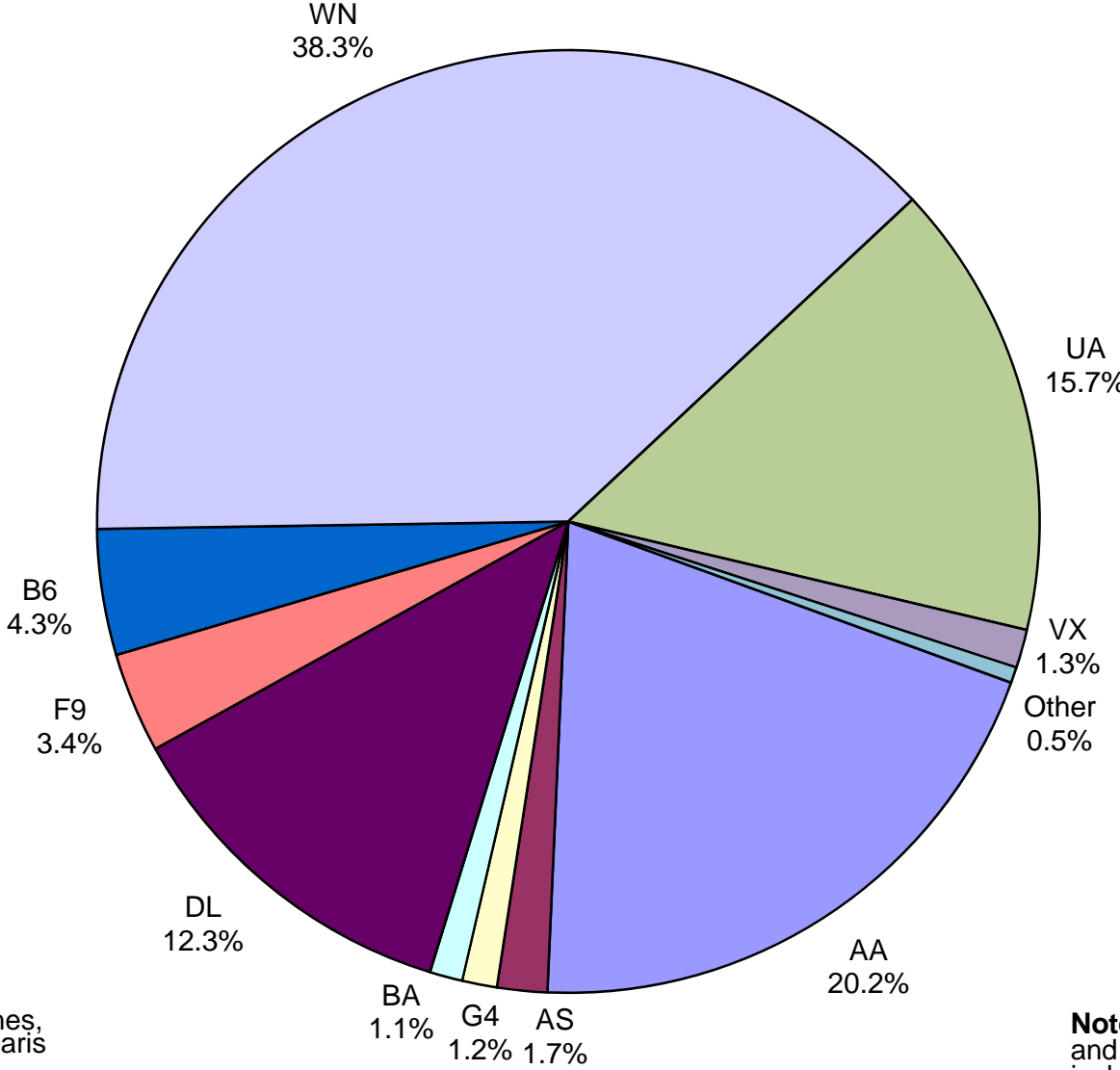
# Total Passengers September 2016



**Other:** Air Canada, Condor Airlines, Sun Country, Texas Sky, Volaris,

**Note:** American, Delta and United Airlines percentages include Affiliates.

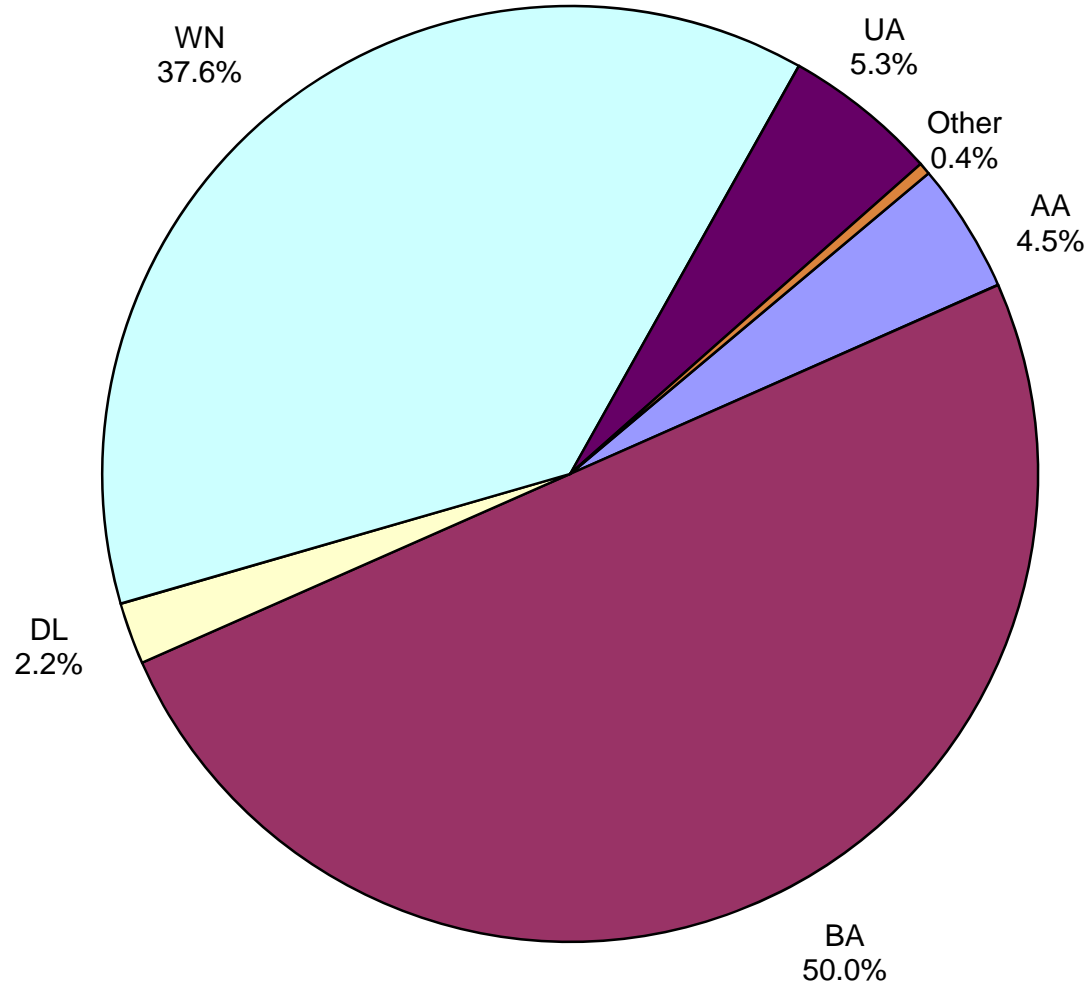
**All Passenger Carriers  
Enplaned Revenue Passengers  
September 2016**



**Other:** Air Canada, Condor Airlines, Sun Country, Texas Sky and Volaris

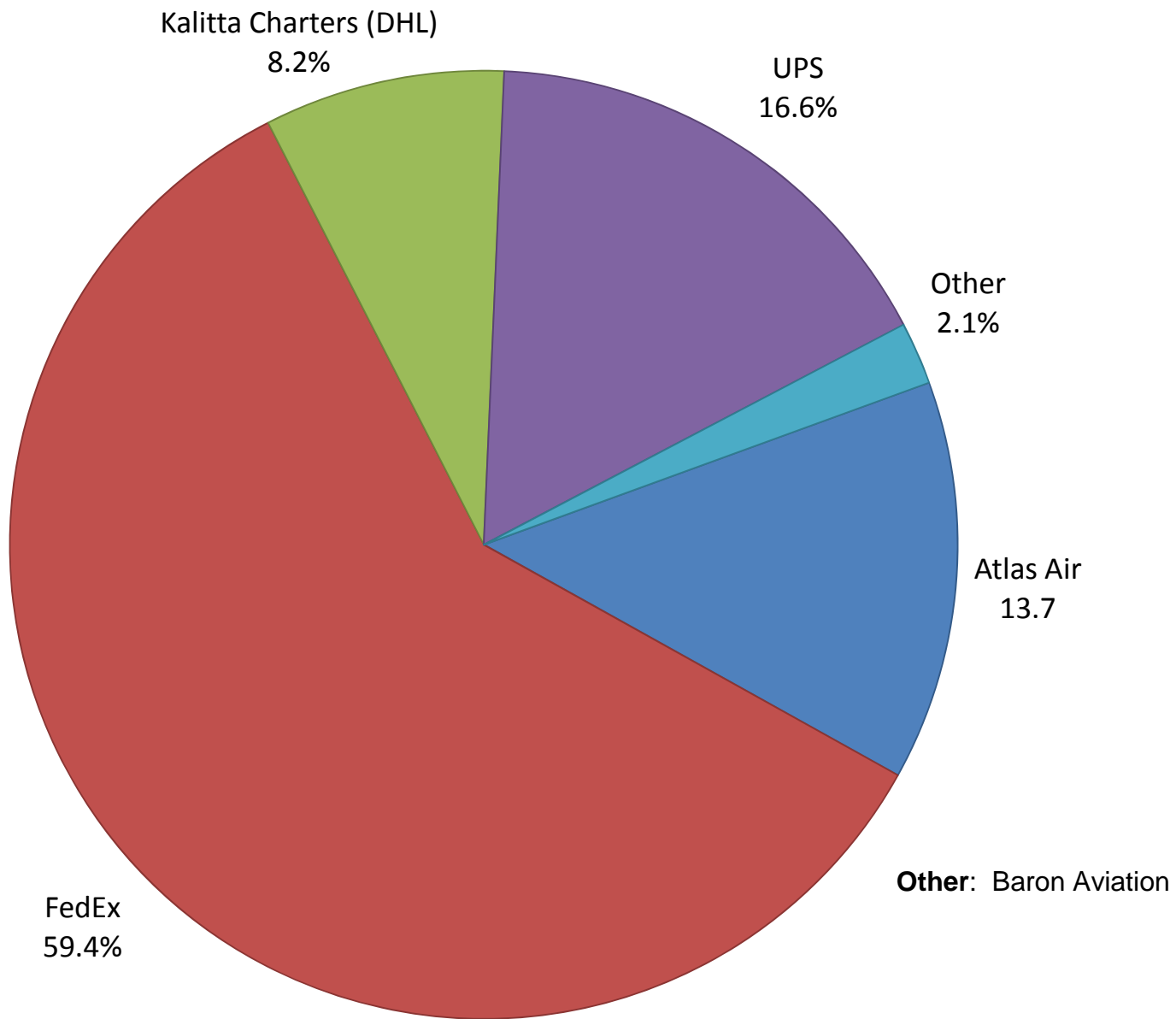
**Note:** American/US Airways, Delta and United Airlines percentages include Affiliates.

**AUS Belly Freight Market Shares  
September 2016**

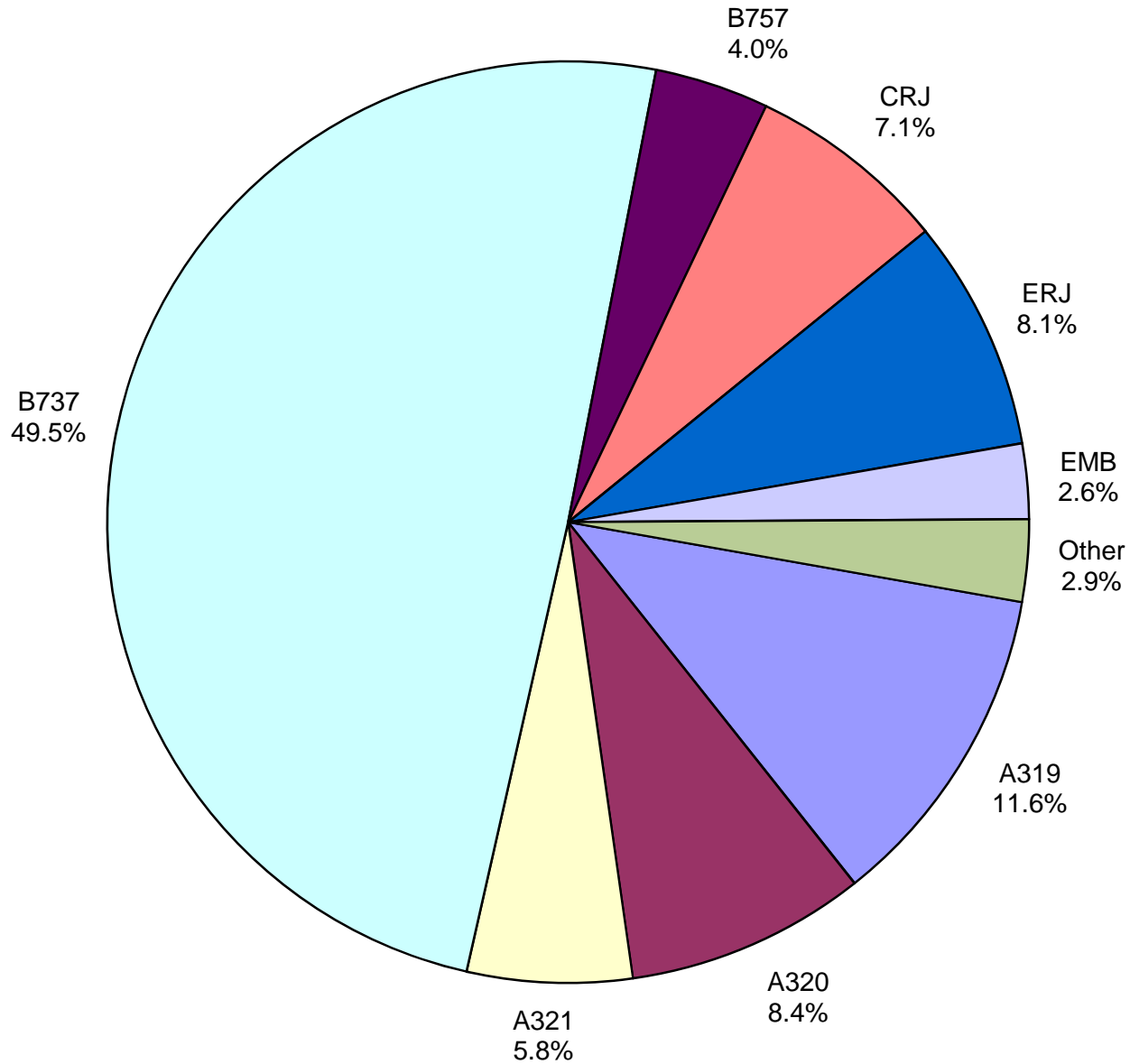


**Other = Alaska Airlines**

# Air Cargo Market Share September 2016

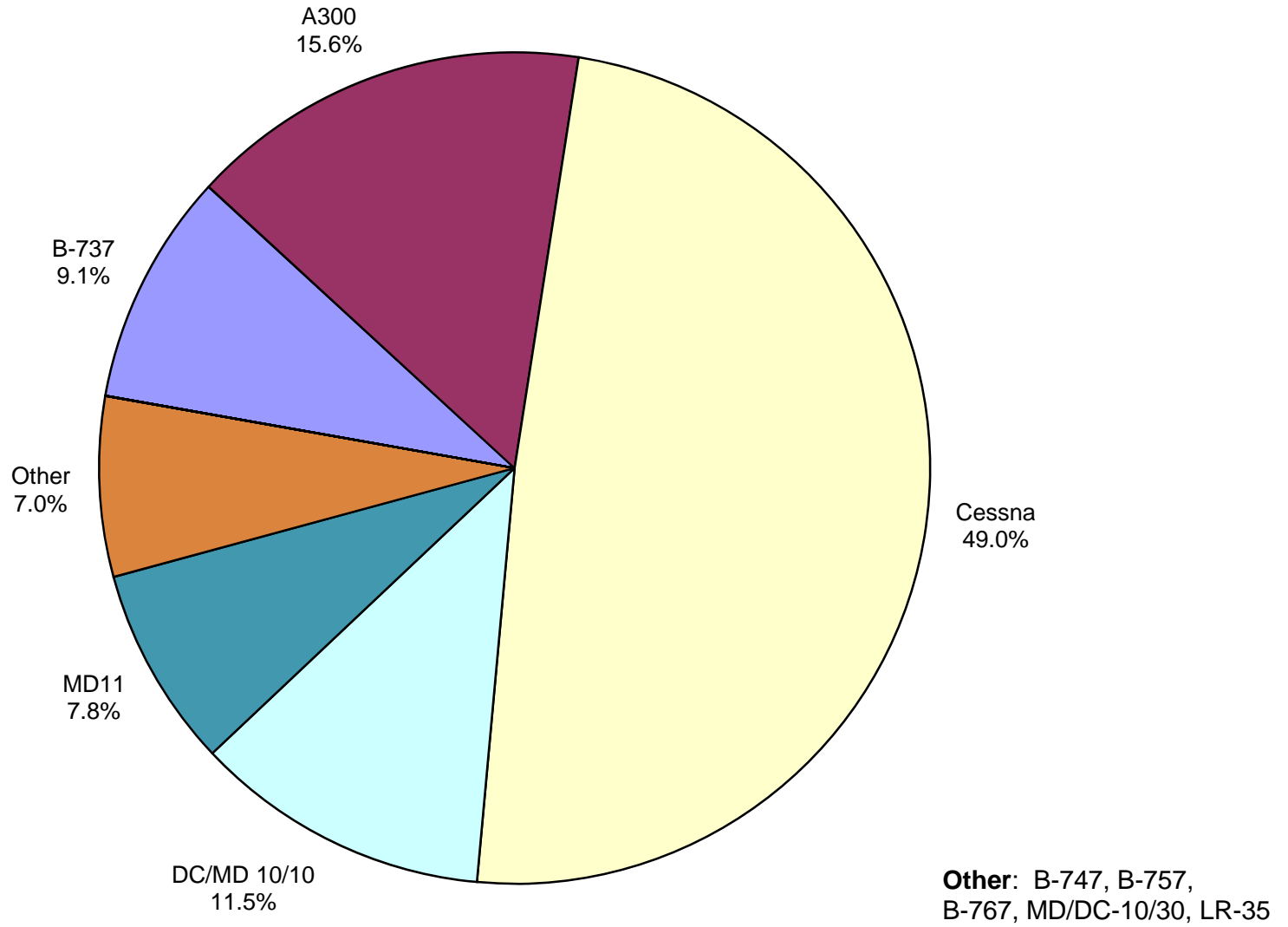


**AUS Scheduled Passenger Aircraft Fleet Mix  
September 2016**



**Other:** B-717, B-767,  
B-787, BAE-3200 ,  
MD-83 and MD-90

**AUS Scheduled Cargo Aircraft Fleet Mix  
September 2016**



# Austin-Bergstrom International Airport

## PAX Detail Report - September, 2016

Period Company	09/2016	09/2015	Difference	Change	YTD 2016	YTD 2015	YTD Difference	YTD Change	2016 Share	2015 Share	Share Diff
Air Canada	3,731	2,449	1,282	52.3	30,947	14,514	16,433	113.2	0.3	0.2	0.2
Alaska Airlines, Inc.	17,960	11,254	6,706	59.6	168,319	110,742	57,577	52.0	1.8	1.3	0.6
Allegiant Air, LLC	11,782	8,104	3,678	45.4	127,033	89,030	38,003	42.7	1.4	1.0	0.4
American Airlines, Inc.	207,318	166,723	40,595	24.3	1,886,397	1,509,476	376,921	25.0	20.4	17.2	3.3
Ameristarjet Charter Inc.	0	3	-3	-100.0	14	8	6	75.0	0.0	0.0	0.0
Atlas Air, Inc	0	0	0	0.0	453	558	-105	-18.8	0.0	0.0	0.0
Branson AirExpress, LLC	0	0	0	0.0	0	2,107	-2,107	-100.0	0.0	0.0	0.0
British Airways Plc	11,401	10,504	897	8.5	98,304	91,884	6,420	7.0	1.1	1.0	0.0
Condor Airlines (Flugdienst) GmbH	336	0	336	0.0	8,142	0	8,142	0.0	0.1	0.0	0.1
Delta Air Lines	125,802	109,087	16,715	15.3	1,140,779	1,069,386	71,393	6.7	12.4	12.2	0.2
Frontier Airlines, Inc.	34,079	36,431	-2,352	-6.5	230,390	269,101	-38,711	-14.4	2.5	3.1	-0.6
Iberia Airlines	0	0	0	0.0	246	0	246	0.0	0.0	0.0	0.0
JetBlue Airways Corporation	44,147	40,167	3,980	9.9	429,822	416,637	13,185	3.2	4.7	4.7	-0.1
Kalitta Charters, LLC	0	0	0	0.0	0	1	-1	-100.0	0.0	0.0	0.0
Miami Air International Inc.	0	0	0	0.0	0	328	-328	-100.0	0.0	0.0	0.0
Omni Air International	0	0	0	0.0	0	238	-238	-100.0	0.0	0.0	0.0
Public Charters, Inc., d/b/a Texas Sky	129	204	-75	-36.8	1,234	2,113	-879	-41.6	0.0	0.0	0.0
Republic Airlines, Inc.	0	0	0	0.0	0	1,058	-1,058	-100.0	0.0	0.0	0.0
Southwest Airlines	383,788	350,443	33,345	9.5	3,533,096	3,183,160	349,936	11.0	38.3	36.2	2.0
Sun Country Airlines/ MN Airlines, LLC	242	0	242	0.0	3,671	1,791	1,880	105.0	0.0	0.0	0.0
Titan Airways Ltd.	0	0	0	0.0	0	160	-160	-100.0	0.0	0.0	0.0
Transportes Aeromar S.A. de C.V.	0	0	0	0.0	0	170	-170	-100.0	0.0	0.0	0.0
Turkish Airlines	0	0	0	0.0	376	0	376	0.0	0.0	0.0	0.0
United Airlines, Inc.	161,945	162,482	-537	-0.3	1,437,988	1,464,773	-26,785	-1.8	15.6	16.7	-1.1
US Airways Group, Inc.	0	43,704	-43,704	-100.0	0	387,493	-387,493	-100.0	0.0	4.4	-4.4
Virgin America Inc.	13,986	23,420	-9,434	-40.3	128,877	172,458	-43,581	-25.3	1.4	2.0	-0.6
Volaris	1,646	0	1,646	0.0	3,676	0	3,676	0.0	0.0	0.0	0.0
Xtra Airways/Casino Express	0	0	0	0.0	1,167	0	1,167	0.0	0.0	0.0	0.0
<b>Report Totals</b>	<b>1,018,292</b>	<b>964,975</b>	<b>53,317</b>	<b>5.5%</b>	<b>9,230,931</b>	<b>8,787,186</b>	<b>443,745</b>	<b>5.0%</b>			

### Statistics Included in Report:

Domestic Passengers:	Enplaned Revenue, Deplaned Revenue, Enplaned Non-Revenue, Deplaned Non-Revenue
International Passengers:	Enplaned Revenue, Deplaned Revenue, Enplaned Non-Revenue, Deplaned Non-Revenue
International Pre-Cleared Passengers:	Enplaned Revenue, Deplaned Revenue, Enplaned Non-Revenue, Deplaned Non-Revenue

# Austin-Bergstrom International Airport

## Summary Landing Report

### Landing Type: Total

Month	2016		2015		2014		% Change 2016 - 2015		% Change 2015 - 2014	
	Count	Weight	Count	Weight	Count	Weight	Count	Weight	Count	Weight
January	4,622	560,718,408	4,480	530,688,382	4,213	478,945,673	3.17%	5.66%	6.34%	10.80%
February	4,387	527,452,920	3,992	477,489,019	3,839	437,160,505	9.89%	10.46%	3.99%	9.23%
March	5,151	639,655,137	4,872	584,604,521	4,746	552,992,572	5.73%	9.42%	2.65%	5.72%
April	4,892	614,643,711	4,875	593,462,176	4,515	521,133,372	0.35%	3.57%	7.97%	13.88%
May	5,096	630,853,941	5,161	625,876,151	4,749	553,415,664	-1.26%	0.80%	8.68%	13.09%
June	5,179	651,537,449	5,239	644,690,908	4,821	569,196,868	-1.15%	1.06%	8.67%	13.26%
July	5,233	663,015,597	5,503	676,131,170	5,000	590,375,055	-4.91%	-1.94%	10.06%	14.53%
August	5,181	660,099,361	5,277	652,770,571	4,752	562,685,827	-1.82%	1.12%	11.05%	16.01%
September	4,738	623,397,035	4,833	598,547,454	4,513	546,749,431	-1.97%	4.15%	7.09%	9.47%
October			4,891	611,952,269	4,842	589,981,037			1.01%	3.72%
November			4,815	605,234,834	4,532	546,643,220			6.24%	10.72%
December			5,100	633,215,540	4,826	569,752,623			5.68%	11.14%
<b>Totals for Selected Period</b>	44,479	5,571,373,559	44,232	5,384,260,352	41,148	4,812,654,967	0.56%	3.48%	7.49%	11.88%
<b>Yearly Totals</b>	44,479	5,571,373,559	59,038	7,234,662,995	55,348	6,519,031,847			6.67%	10.98%