

**Austin-Bergstrom International Airport
Aviation Activity Report
Calendar Year 2018 vs 2017**

Combined Terminals

	5/2018	5/2017	Percent Change	1/2018 - 5/2018	1/2017 - 5/2017	Percent Change
ABIA						
Total Passenger Activity						
Domestic Enplaned Revenue	666,204	579,820	14.90	2,835,855	2,514,558	12.78
Domestic Deplaned Revenue	646,153	552,346	16.98	2,833,870	2,496,873	13.50
International Enplaned Revenue	19,766	14,919	32.49	69,285	57,020	21.51
International Deplaned Revenue	17,074	13,959	22.32	68,629	56,421	21.64
Domestic Enplaned Non-Revenue	15,139	14,193	6.67	68,143	63,202	7.82
Domestic Deplaned Non-Revenue	14,409	13,074	10.21	64,808	60,226	7.61
International Enplaned Non-Revenue	136	94	44.68	631	417	51.32
International Deplaned Non-Revenue	120	61	96.72	468	356	31.46
Intl Enplaned Pre-Cleared Revenue	2,157	1,769	21.93	8,981	8,039	11.72
Intl Deplaned Pre-Cleared Revenue	1,964	1,608	22.14	9,190	8,348	10.09
Intl Enplaned Pre-Cleared Non-Revenue	34	32	6.25	143	124	15.32
Intl Deplaned Pre-Cleared Non-Revenue	33	23	43.48	140	133	5.26
South Terminal Domestic Enplaned Revenue	15,445	13,039	18.45	68,024	20,118	238.13
South Terminal Domestic Deplaned Revenue	15,601	12,886	21.07	68,655	19,812	246.53
South Terminal Domestic Enplaned Non-Revenue	2	1	100.00	14	1	1,300.00
South Terminal Domestic Deplaned Non-Revenue	6	0	0.00	19	0	0.00
ABIA Passenger Totals	1,414,243	1,217,824	16.13	6,096,855	5,305,648	14.91
<i>ABIA Enplaned Passenger Totals</i>	<i>718,883</i>	<i>623,867</i>	<i>15.23</i>	<i>3,051,076</i>	<i>2,663,479</i>	<i>14.55</i>
<i>ABIA Deplaned Passenger Totals</i>	<i>695,360</i>	<i>593,957</i>	<i>17.07</i>	<i>3,045,779</i>	<i>2,642,169</i>	<i>15.28</i>
<i>ABIA Domestic Passenger Totals</i>	<i>1,372,959</i>	<i>1,185,359</i>	<i>15.83</i>	<i>5,939,388</i>	<i>5,174,790</i>	<i>14.78</i>
<i>ABIA International Passenger Totals</i>	<i>41,284</i>	<i>32,465</i>	<i>27.16</i>	<i>157,467</i>	<i>130,858</i>	<i>20.33</i>

CURRENT PASSENGER RECORD = 1,414,243 RECORD SET = MAY 2018

Total Aircraft Operations

Air Carrier	11,847	10,826	9.43	53,071	49,098	8.09
Commuter & Air Taxi	1,591	1,195	33.14	7,372	6,459	14.14
Military	1,161	726	59.92	4,167	4,054	2.79
General Aviation						
Itinerant	4,381	4,176	4.91	19,699	21,317	-7.59
Local	144	203	-29.06	697	915	-23.83
Total G.A.	4,525	4,379	3.33	20,396	22,232	-8.26
Total Operations	19,124	17,126	11.67	85,006	81,843	3.86

**Austin-Bergstrom International Airport
Aviation Activity Report
Calendar Year 2018 vs 2017**

By Terminal

	5/2018	5/2017	Percent Change	1/2018 - 5/2018	1/2017 - 5/2017	Percent Change
<u>Barbara Jordan Terminal (BJT)</u>						
Passenger Activity						
Domestic Enplaned Revenue	666,204	579,820	14.90	2,835,855	2,514,558	12.78
Domestic Deplaned Revenue	646,153	552,346	16.98	2,833,870	2,496,873	13.50
International Enplaned Revenue	19,766	14,919	32.49	69,285	57,020	21.51
International Deplaned Revenue	17,074	13,959	22.32	68,629	56,421	21.64
Domestic Enplaned Non-Revenue	15,139	14,193	6.67	68,143	63,202	7.82
Domestic Deplaned Non-Revenue	14,409	13,074	10.21	64,808	60,226	7.61
International Enplaned Non-Revenue	136	94	44.68	631	417	51.32
International Deplaned Non-Revenue	120	61	96.72	468	356	31.46
Intl Enplaned Pre-Cleared Revenue	2,157	1,769	21.93	8,981	8,039	11.72
Intl Deplaned Pre-Cleared Revenue	1,964	1,608	22.14	9,190	8,348	10.09
Intl Enplaned Pre-Cleared Non-Revenue	34	32	6.25	143	124	15.32
Intl Deplaned Pre-Cleared Non-Revenue	33	23	43.48	140	133	5.26
Barbara Jordan Terminal Passenger Totals	1,383,189	1,191,898	16.05	5,960,143	5,265,717	13.19
<i>BJT Enplaned Passenger Totals</i>	<i>703,436</i>	<i>610,827</i>	<i>15.16</i>	<i>2,983,038</i>	<i>2,643,360</i>	<i>12.85</i>
<i>BJT Deplaned Passenger Totals</i>	<i>679,753</i>	<i>581,071</i>	<i>16.98</i>	<i>2,977,105</i>	<i>2,622,357</i>	<i>13.53</i>
<i>BJT Domestic Passenger Totals</i>	<i>1,341,905</i>	<i>1,159,433</i>	<i>15.74</i>	<i>5,802,676</i>	<i>5,134,859</i>	<i>13.01</i>
<i>BJT International Passenger Totals</i>	<i>41,284</i>	<i>32,465</i>	<i>27.16</i>	<i>157,467</i>	<i>130,858</i>	<i>20.33</i>
<u>South Terminal (ST)</u>						
Passenger Activity						
South Terminal Domestic Enplaned Revenue	15,445	13,039	18.45	68,024	20,118	238.13
South Terminal Domestic Deplaned Revenue	15,601	12,886	21.07	68,655	19,812	246.53
South Terminal Domestic Enplaned Non-Revenue	2	1	100.00	14	1	1300.00
South Terminal Domestic Deplaned Non-Revenue	6	0	0.00	19	0	0.00
South Terminal Passenger Totals	31,054	25,926	19.78	136,712	39,931	242.37
<i>ST Enplaned Passenger Totals</i>	<i>15,447</i>	<i>13,040</i>	<i>18.46</i>	<i>68,038</i>	<i>20,119</i>	<i>238.18</i>
<i>ST Deplaned Passenger Totals</i>	<i>15,607</i>	<i>12,886</i>	<i>21.12</i>	<i>68,674</i>	<i>19,812</i>	<i>246.63</i>

**Austin-Bergstrom International Airport
Aviation Activity Report
Calendar Year 2018 vs 2017**

	5/2018	5/2017	Percent Change	1/2018 - 5/2018	1/2017 - 5/2017	Percent Change
<u>Total Cargo Activity</u>						
Mail						
Domestic Enplaned Mail	231,359	204,373	13.20	953,081	965,948	-1.33
Domestic Deplaned Mail	438,669	407,133	7.75	2,049,693	1,703,529	20.32
International Enplaned Mail	0	0	0.00	0	0	0.00
International Deplaned Mail	0	0	0.00	0	0	0.00
South Terminal-Intl Enplaned Mail	0	0	0.00	0	0	0.00
South Terminal-Intl Deplaned Mail	0	0	0.00	0	0	0.00
Mail Totals	670,028	611,506	9.57	3,002,774	2,669,477	12.49
Cargo						
Domestic Enplaned Cargo	5,212,877	5,001,805	4.22	24,558,052	24,097,298	1.91
Domestic Deplaned Cargo	7,124,891	6,975,675	2.14	34,252,756	33,988,010	0.78
International Enplaned Cargo	960,165	649,120	47.92	3,504,752	3,819,351	-8.24
International Deplaned Cargo	169,377	285,929	-40.76	1,688,864	2,186,578	-22.76
South Terminal-Intl Enplaned Cargo	0	0	0.00	0	0	0.00
South Terminal-Intl Deplaned Cargo	0	0	0.00	0	0	0.00
Cargo Totals	13,467,310	12,912,529	4.30	64,004,424	64,091,237	-0.14
Belly Freight						
Domestic Enplaned Belly Freight	406,697	272,998	48.97	1,434,164	1,259,365	13.88
Domestic Deplaned Belly Freight	647,897	562,633	15.15	2,358,246	2,506,895	-5.93
International Enplaned Belly Freight	279,607	141,385	97.76	1,401,884	1,030,995	35.97
International Deplaned Belly Freight	521,389	754,657	-30.91	2,858,494	3,581,599	-20.19
South Terminal-Intl Enplaned Belly Freight	0	0	0.00	0	0	0.00
South Terminal-Intl Deplaned Belly Freight	0	0	0.00	0	0	0.00
Belly Freight Totals	1,855,590	1,731,673	7.16	8,052,788	8,378,854	-3.89
Cargo Totals (Mail, Cargo, Belly Freight)	15,992,928	15,255,708	4.83	75,059,986	75,139,568	-0.11
<i>Enplaned Cargo Totals</i>	<i>7,090,705</i>	<i>6,269,681</i>	<i>13.10</i>	<i>31,851,933</i>	<i>31,172,957</i>	<i>2.18</i>
<i>Deplaned Cargo Totals</i>	<i>8,902,223</i>	<i>8,986,027</i>	<i>-0.93</i>	<i>43,208,053</i>	<i>43,966,611</i>	<i>-1.73</i>
<i>Domestic Cargo Totals</i>	<i>14,062,390</i>	<i>13,424,617</i>	<i>4.75</i>	<i>65,605,992</i>	<i>64,521,045</i>	<i>1.68</i>
<i>International Cargo Totals</i>	<i>1,930,538</i>	<i>1,831,091</i>	<i>5.43</i>	<i>9,453,994</i>	<i>10,618,523</i>	<i>-10.97</i>

CURRENT CARGO RECORD = 40,215,518

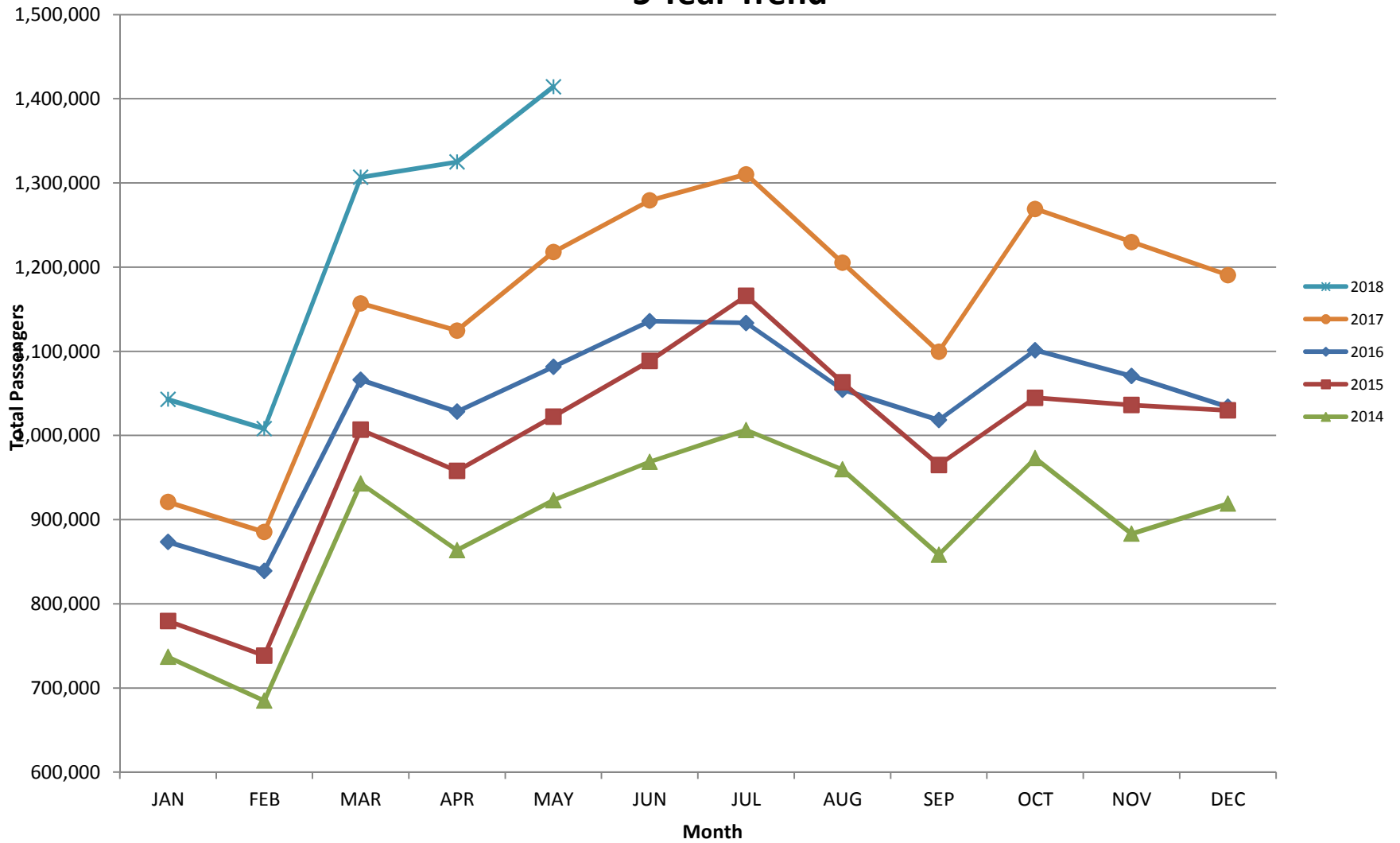
RECORD SET = MARCH 2001

AUS – Airline Codes
May 2018

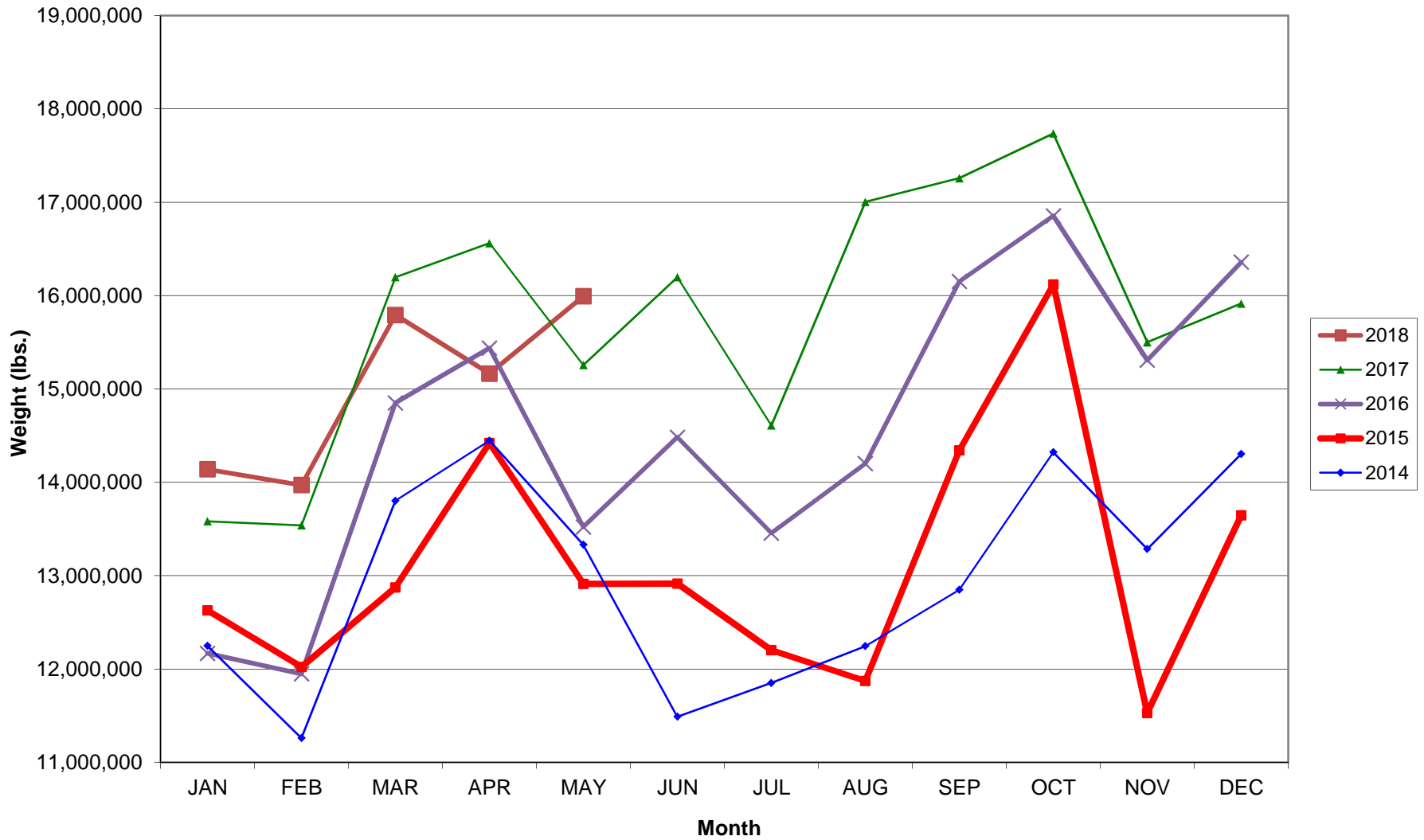
<u>Code</u>	<u>Carrier</u>
AM	Aerovias de Mexico S.A. de C.V. dba AeroMexico Airlines
AC	Air Canada
AS	Alaska Airlines,Inc. (Includes Virgin America. Merger effective 2/1/2018)
G4	Allegiant Air, LLC
AA	American Airlines, Inc.
BA	British Airways Plc
Y4	Concesionaria Vuela Compañía de Aviación, S.A.P.I. de C.V dba Volaris
DE	Condor Airlines
DL	Delta Airlines
F9	Frontier Airlines
B6	JetBlue Airways Corp.
DY	Norwegian Air UK, Ltd.
WN	Southwest Airlines
SY	Sun Country Airlines/ MN Airlines, LLC
WQ	Swift Air
UA	United Airlines, Inc.
VC	VIA Airlines

AUSTIN PASSENGER TRAFFIC

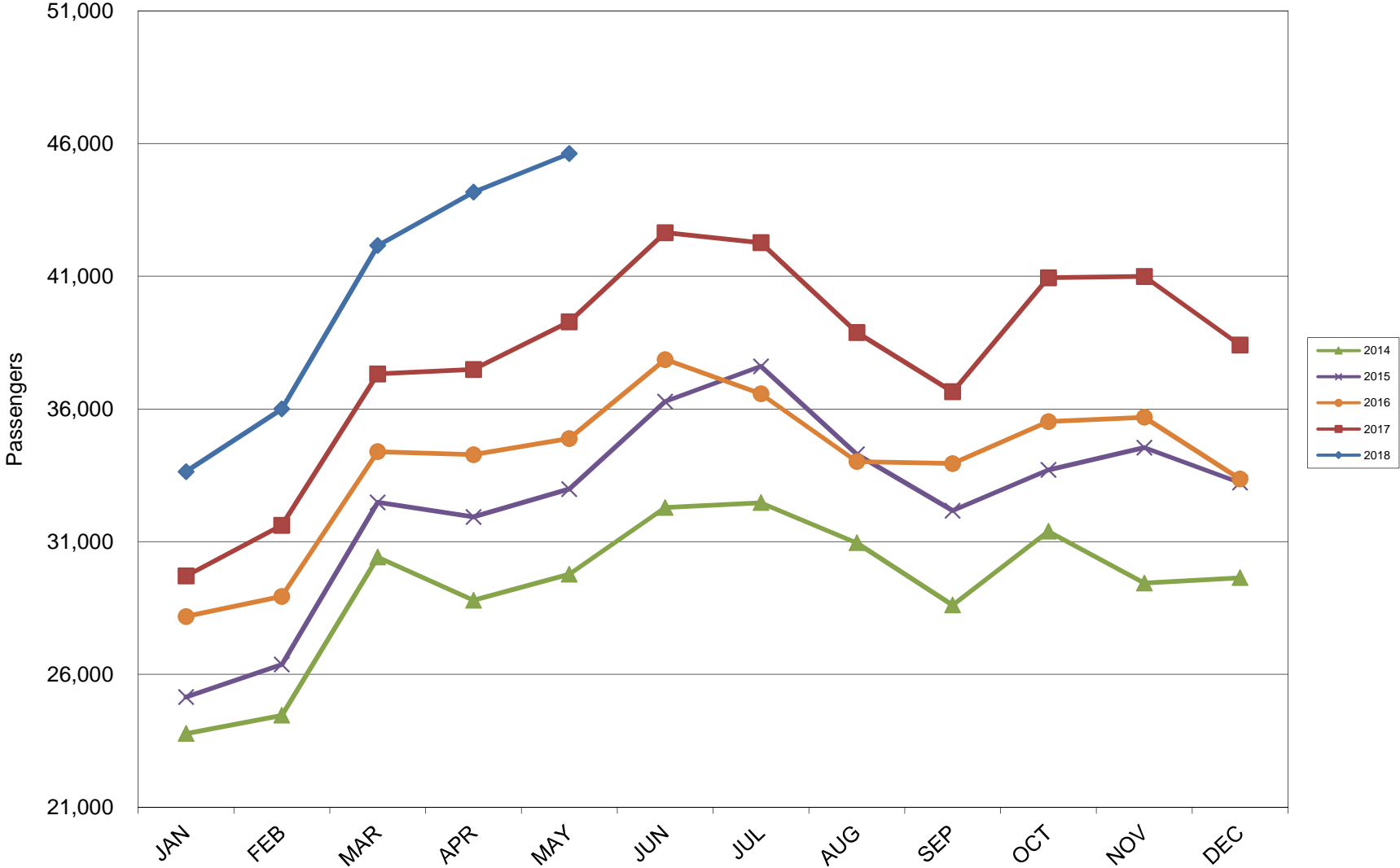
5 Year Trend



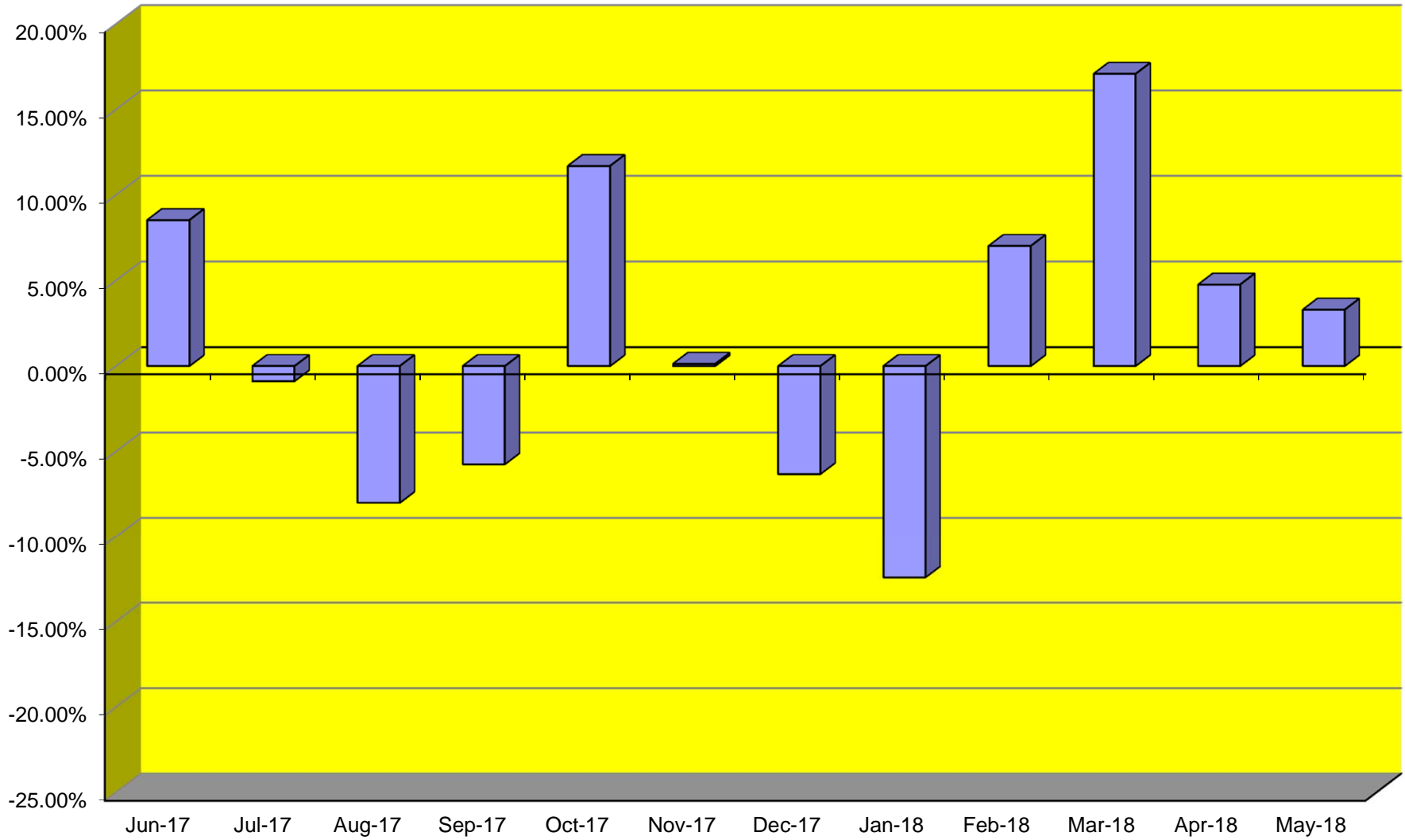
TOTAL CARGO POUNDAGE - AUSTIN, TEXAS



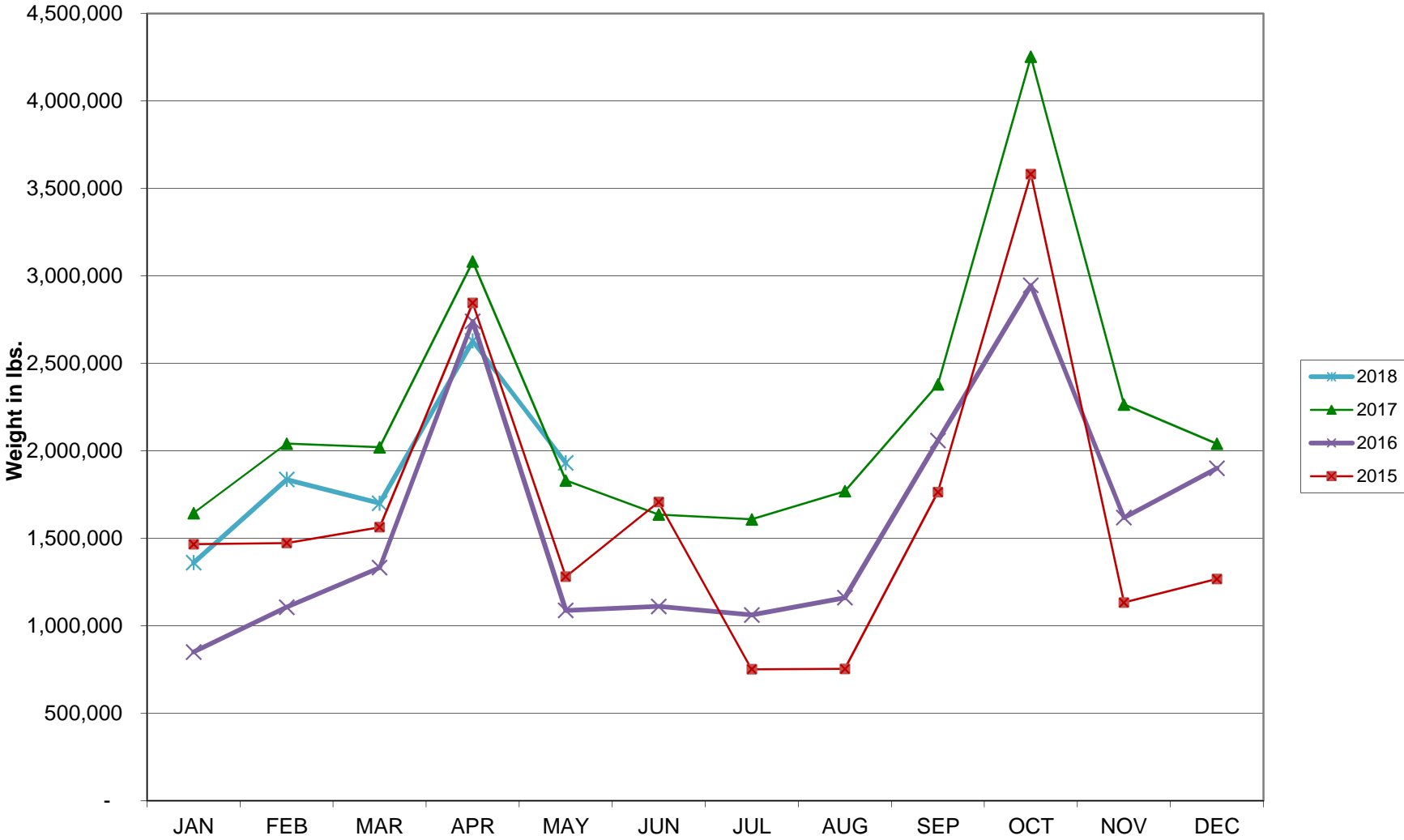
Average Daily Passengers



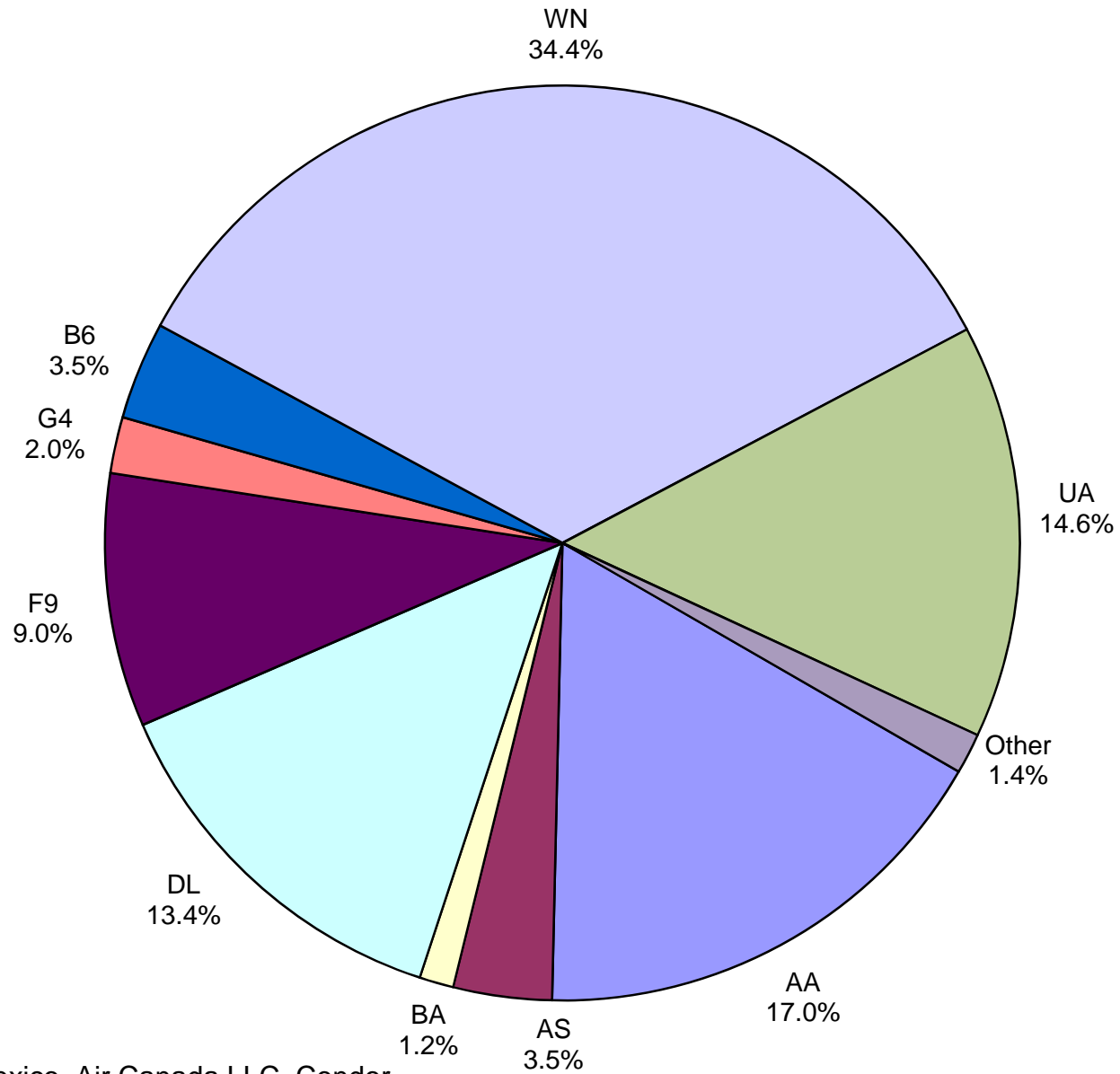
Monthly % Change in Average Daily Passengers



HISTORY OF INTERNATIONAL AIR CARGO



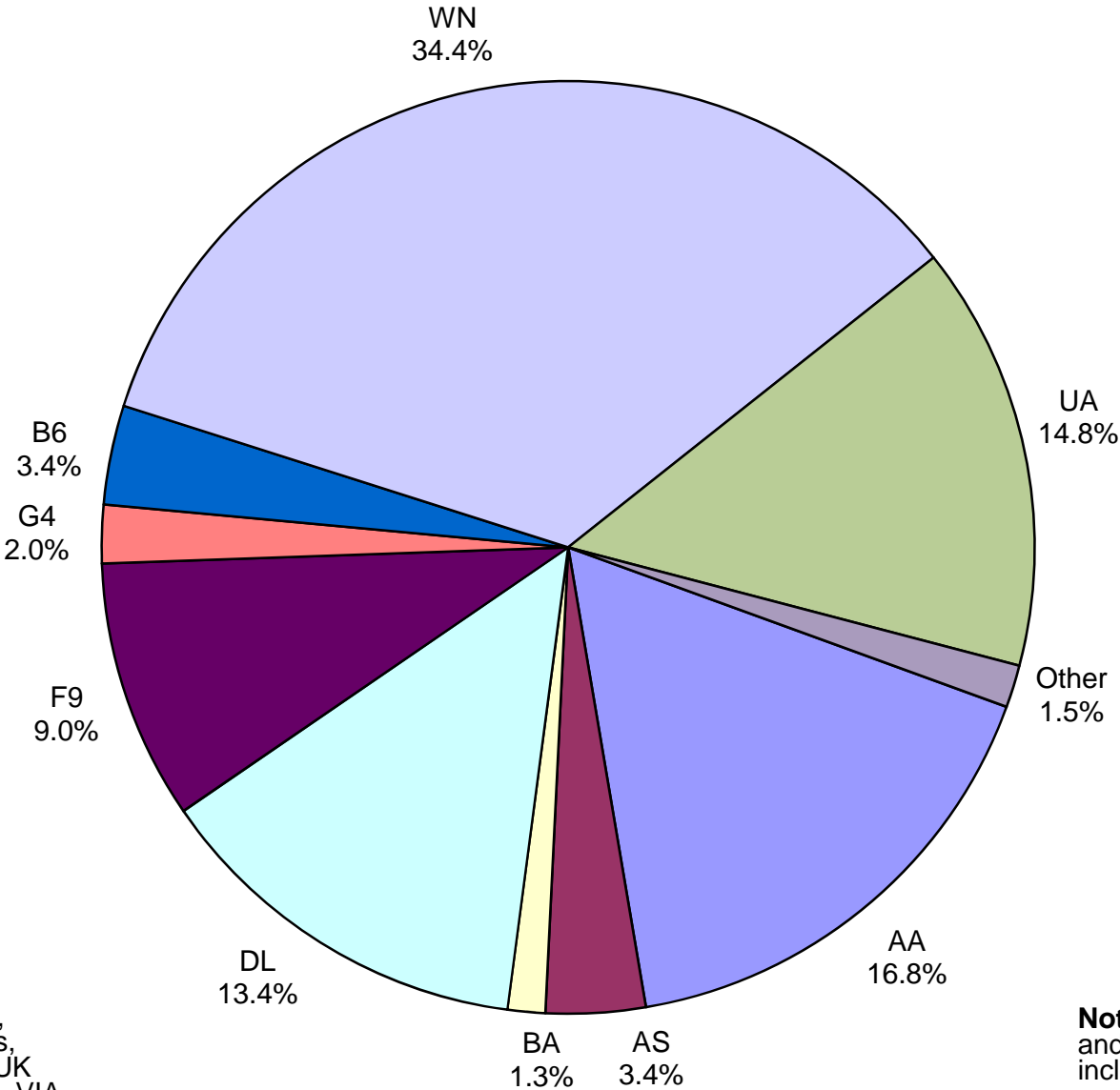
Total Passengers May 2018



Other: Aeromexico, Air Canada LLC, Condor Airlines, Norwegian Air UK, Ltd., Sun Country, Swift Air, VIA Airlines and Concesionaria Vuela dba Volaris

Note: American, Delta and United Airlines percentages include Affiliates.

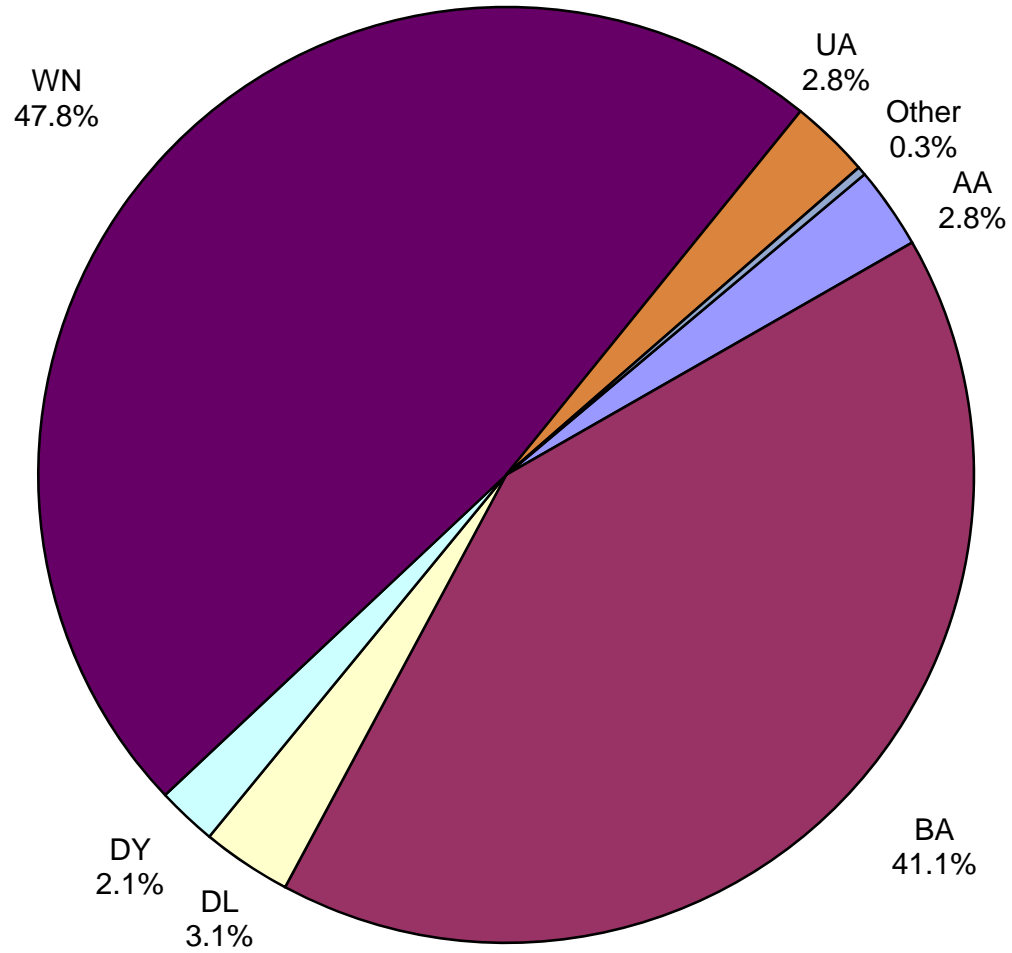
**All Passenger Carriers
Enplaned Revenue Passengers
May 2018**



Other: Aeromexico, Air Canada, Concesionaria Vuela dba Volaris, Condor Airlines, Norwegian Air UK Ltd., Sun Country, Swift Air and VIA Airlines

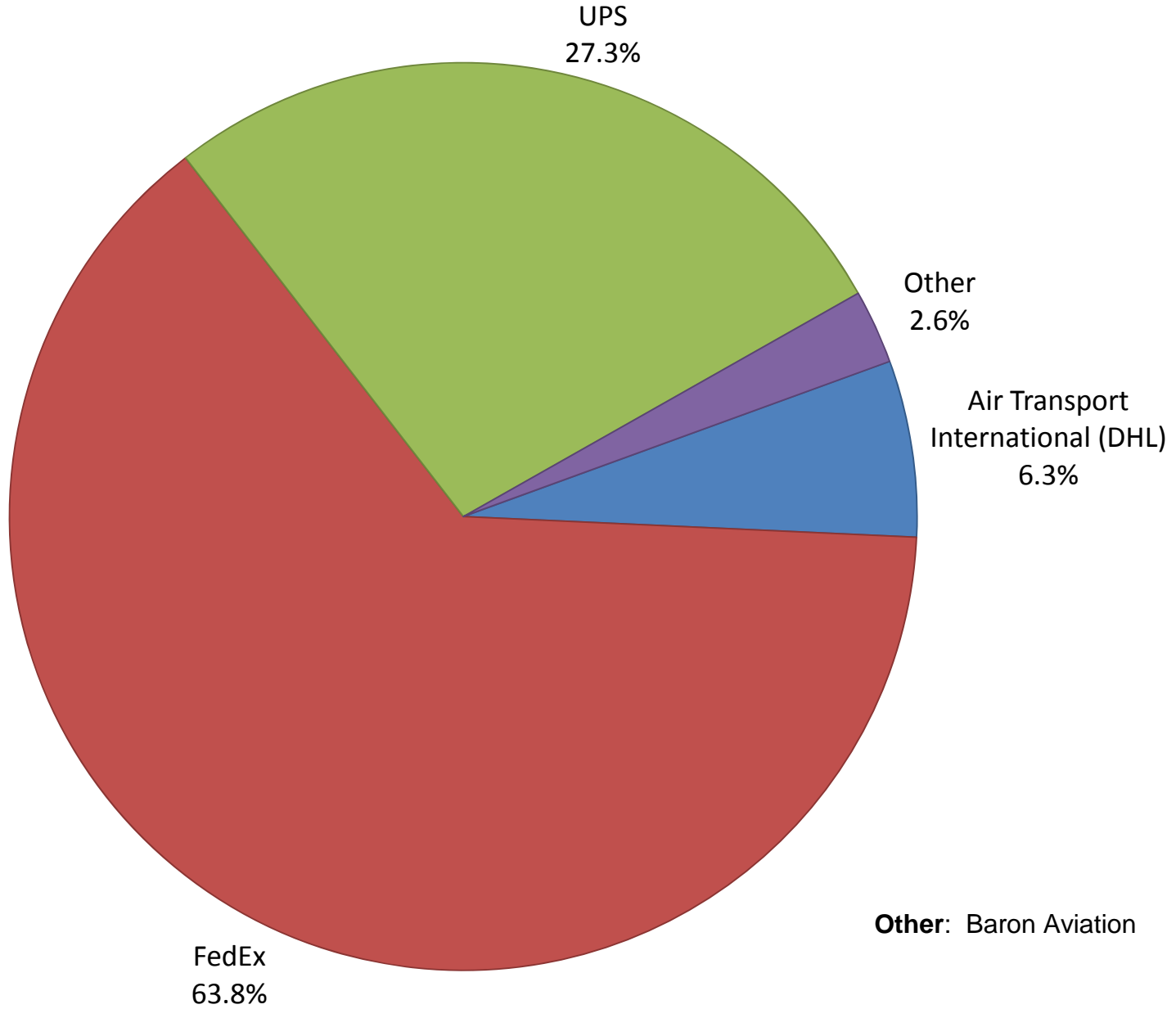
Note: American/US Airways, Delta and United Airlines percentages include Affiliates.

**AUS Belly Freight Market Shares
May 2018**

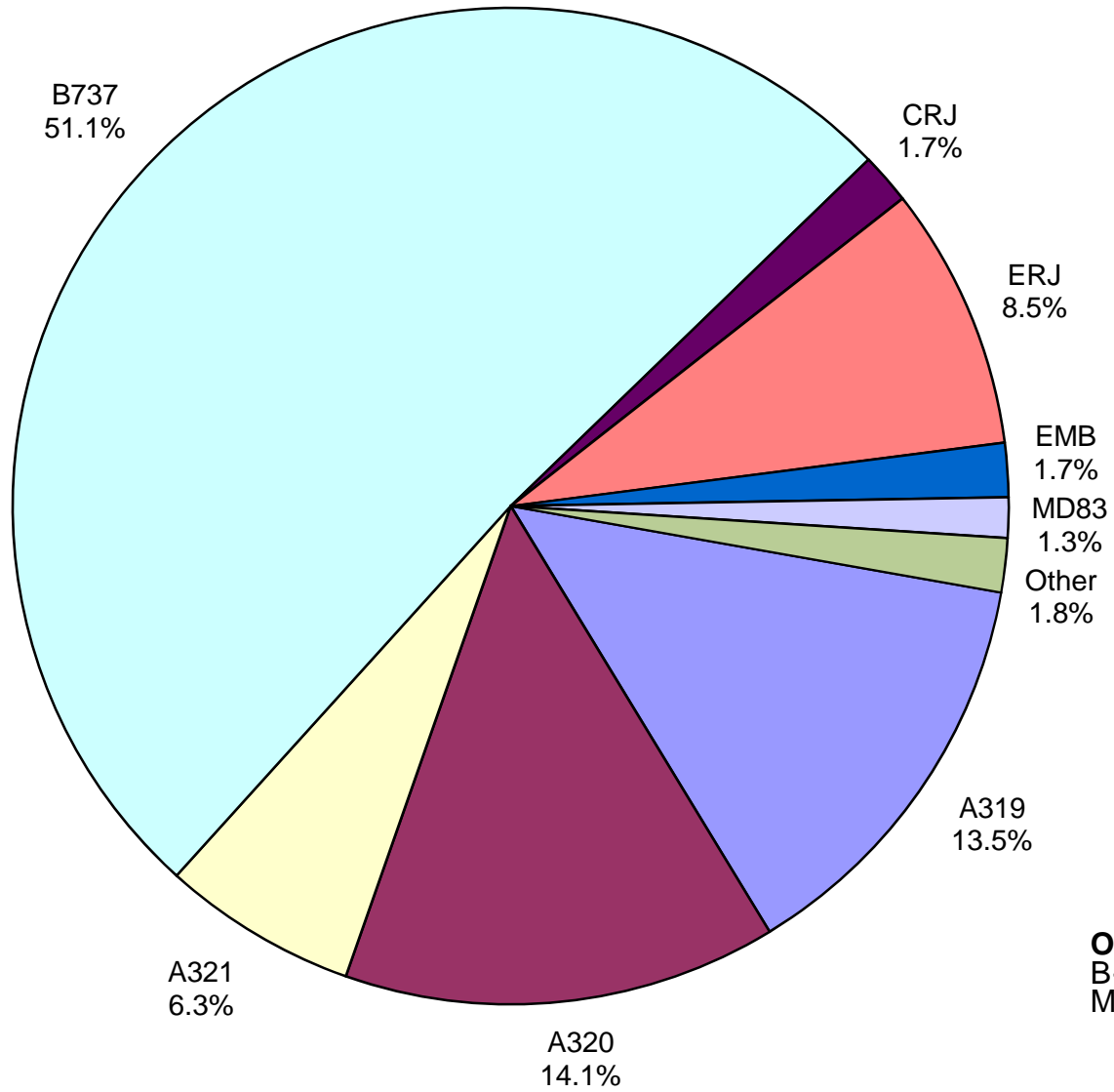


Other = Alaska Airlines

Air Cargo Market Share May 2018

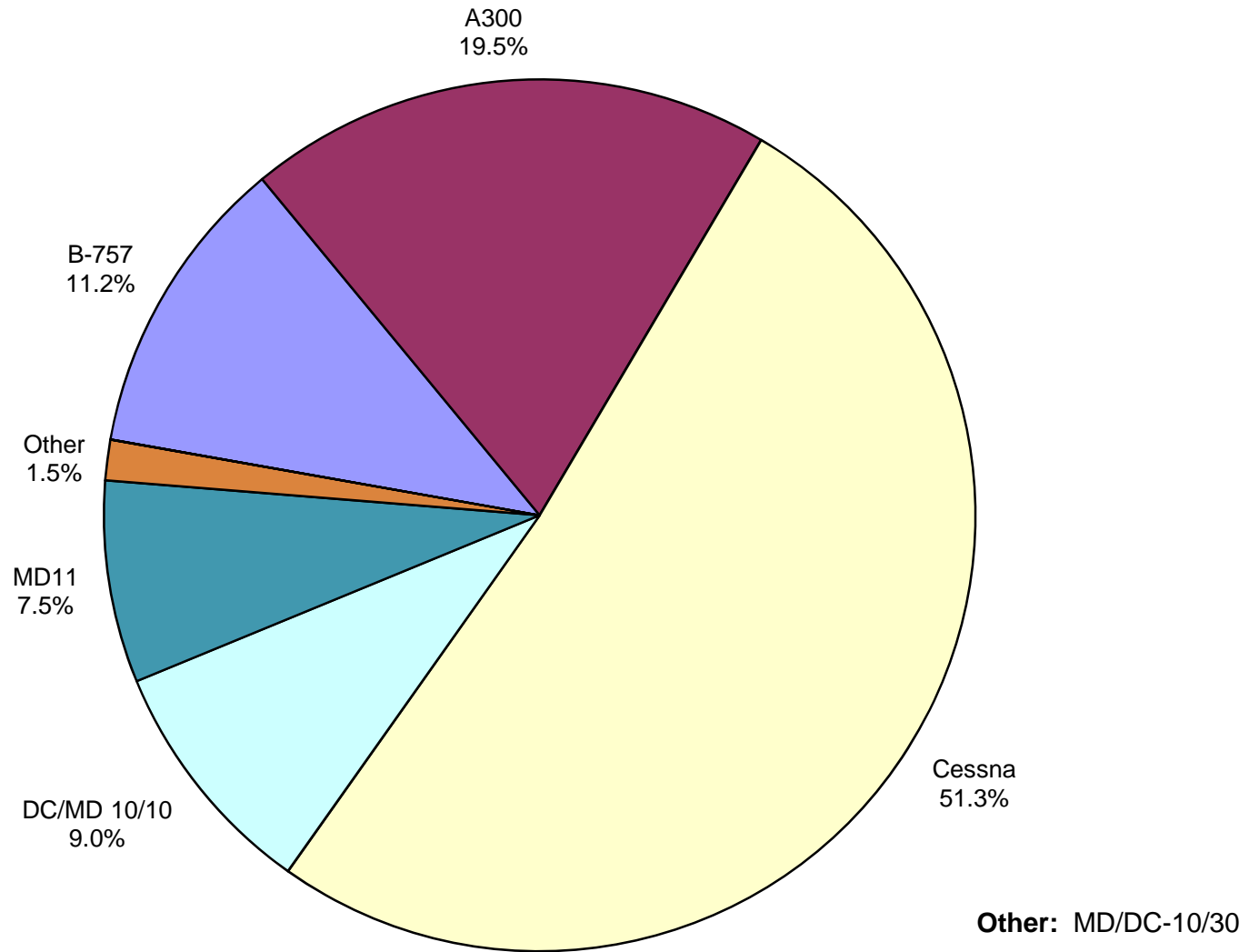


**AUS Scheduled Passenger Aircraft Fleet Mix
May 2018**



Other: B-747-400, B-717,
B-767 B-787-900, MD-82 and
MD-88

**AUS Scheduled Cargo Aircraft Fleet Mix
May 2018**



Austin-Bergstrom International Airport

PAX Detail Report - May, 2018

Company	05/2018	05/2017	Period		YTD 2018	YTD 2017	YTD		2018 Share	2017 Share	Share Diff
			Difference	Change			Difference	Change			
Aerovias de Mexico S.A. de C.V.	3,147	3,009	138	4.6	16,708	14,930	1,778	11.9	0.3	0.3	0.0
Air Canada	4,188	3,432	756	22.0	18,454	16,644	1,810	10.9	0.3	0.3	0.0
Alaska Airlines	49,305	21,137	28,168	133.3	216,015	97,474	118,541	121.6	3.5	1.8	1.7
Allegiant Air	28,149	25,805	2,344	9.1	128,288	98,726	29,562	29.9	2.1	1.9	0.2
American Airlines	240,753	211,495	29,258	13.8	1,103,433	1,013,366	90,067	8.9	18.1	19.1	-1.0
British Airways	17,090	11,266	5,824	51.7	62,303	51,968	10,335	19.9	1.0	1.0	0.0
Concesionaria Vuela Compañía de Aviación, S.A.P.I. de C.V.	1,070	1,151	-81	-7.0	5,550	7,171	-1,621	-22.6	0.1	0.1	0.0
Condor Airlines	413	3,390	-2,977	-87.8	413	3,390	-2,977	-87.8	0.0	0.1	-0.1
Delta Air Lines	190,093	155,569	34,524	22.2	815,107	660,054	155,053	23.5	13.4	12.4	0.9
Frontier Airlines	126,673	52,257	74,416	142.4	349,800	155,223	194,577	125.4	5.7	2.9	2.8
Iberia Airlines	0	0	0	0.0	0	245	-245	-100.0	0.0	0.0	0.0
JetBlue Airways	48,855	51,439	-2,584	-5.0	243,627	243,270	357	0.1	4.0	4.6	-0.6
Miami Air International	0	0	0	0.0	309	0	309	0.0	0.0	0.0	0.0
Norwegian Air UK LTD	8,271	0	8,271	0.0	16,638	0	16,638	0.0	0.3	0.0	0.3
Scandinavian Airlines	0	0	0	0.0	697	0	697	0.0	0.0	0.0	0.0
Southwest Airlines	486,069	457,553	28,516	6.2	2,192,174	2,003,672	188,502	9.4	36.0	37.8	-1.8
Sun Country Airlines	616	348	268	77.0	2,263	2,382	-119	-5.0	0.0	0.0	0.0
Swift Air	286	0	286	0.0	845	426	419	98.4	0.0	0.0	0.0
Texas Sky	0	0	0	0.0	0	604	-604	-100.0	0.0	0.0	0.0
United Airlines	206,976	206,068	908	0.4	906,953	869,510	37,443	4.3	14.9	16.4	-1.5
VIA Airlines	2,289	121	2,168	1,791.7	6,161	121	6,040	4,991.7	0.1	0.0	0.1
Virgin America	0	13,784	-13,784	-100.0	11,117	66,336	-55,219	-83.2	0.2	1.3	-1.1
Xtra Airways/Casino Express	0	0	0	0.0	0	136	-136	-100.0	0.0	0.0	0.0
Report Totals	1,414,243	1,217,824	196,419	16.1%	6,096,855	5,305,648	791,207	14.9%			

Statistics Included in Report:

Domestic Passengers:	Enplaned Revenue, Deplaned Revenue, Enplaned Non-Revenue, Deplaned Non-Revenue
International Passengers:	Enplaned Revenue, Deplaned Revenue, Enplaned Non-Revenue, Deplaned Non-Revenue
International Pre-Cleared Passengers:	Enplaned Revenue, Deplaned Revenue, Enplaned Non-Revenue, Deplaned Non-Revenue
South Terminal Domestic Passengers:	Enplaned Revenue, Deplaned Revenue, Enplaned Non-Revenue, Deplaned Non-Revenue

Austin-Bergstrom International Airport

Summary Landing Report

Landing Type: Total

Month	2018		2017		2016		% Change 2018 - 2017		% Change 2017 - 2016	
	Count	Weight	Count	Weight	Count	Weight	Count	Weight	Count	Weight
January	5,086	688,923,110	4,768	612,688,871	4,622	560,718,408	6.67%	12.44%	3.16%	9.27%
February	4,706	637,500,756	4,357	552,711,639	4,387	527,452,920	8.01%	15.34%	-0.68%	4.79%
March	5,643	760,648,260	5,307	685,661,659	5,151	639,655,137	6.33%	10.94%	3.03%	7.19%
April	5,797	793,367,736	5,179	689,402,051	4,892	614,643,711	11.93%	15.08%	5.87%	12.16%
May	6,117	831,431,763	5,529	736,484,083	5,096	630,853,941	10.63%	12.89%	8.50%	16.74%
June			5,603	752,628,599	5,179	651,537,449			8.19%	15.52%
July			5,698	763,088,836	5,233	663,015,597			8.89%	15.09%
August			5,490	741,110,019	5,181	660,099,361			5.96%	12.27%
September			5,046	679,381,339	4,738	623,397,035			6.50%	8.98%
October			5,448	743,973,610	4,923	649,182,343			10.66%	14.60%
November			5,289	718,179,948	4,775	624,303,554			10.76%	15.04%
December			5,442	737,424,963	4,893	629,611,090			11.22%	17.12%
Totals for Selected Period	27,349	3,711,871,625	25,140	3,276,948,303	24,148	2,973,324,117	8.79%	13.27%	4.11%	10.21%
Yearly Totals	27,349	3,711,871,625	63,156	8,412,735,617	59,070	7,474,470,546			6.92%	12.55%