

# ZILKER METROPOLITAN PARK VISION PLAN

## Parks And Recreation Board Briefing

FEBRUARY 27, 2023



DESIGNWORKSHOP

# ZILKER PARK

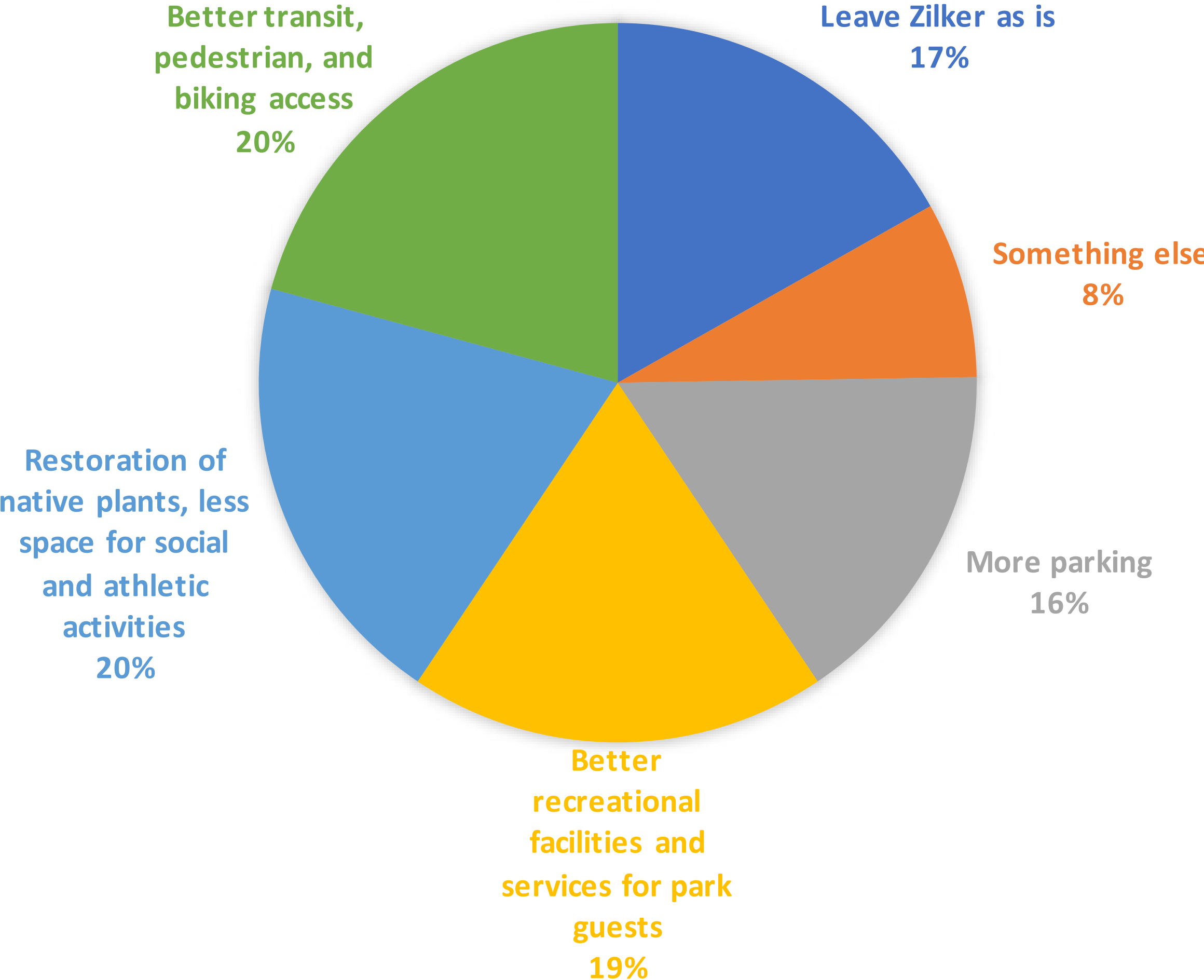
## Notley/Monitor Poll: Austinites can't agree on greatest park challenges or solutions

WEDNESDAY, FEBRUARY 15, 2023 BY  
NINA HERNANDEZ

Austin residents regularly use city parks but are divided over how they should be maintained, according to a January/February poll of 429 voters commissioned by Notley and conducted by national pollster Change Research for the Austin Monitor.

The poll comes as Austin leaders continue to focus on parks and open space and projects like the Texas Capitol Complex and the Waterloo Greenway, and as the city considers its role in the Interstate 35 Capital Express project. The city is working with the Texas Department of Transportation to incorporate open and park space into the designs for the section that will run through Austin.

Zilker Park is undergoing a planning process called the Zilker Metropolitan Park Vision Plan. What do you think is the most critical improvement that can be made to Zilker Park?



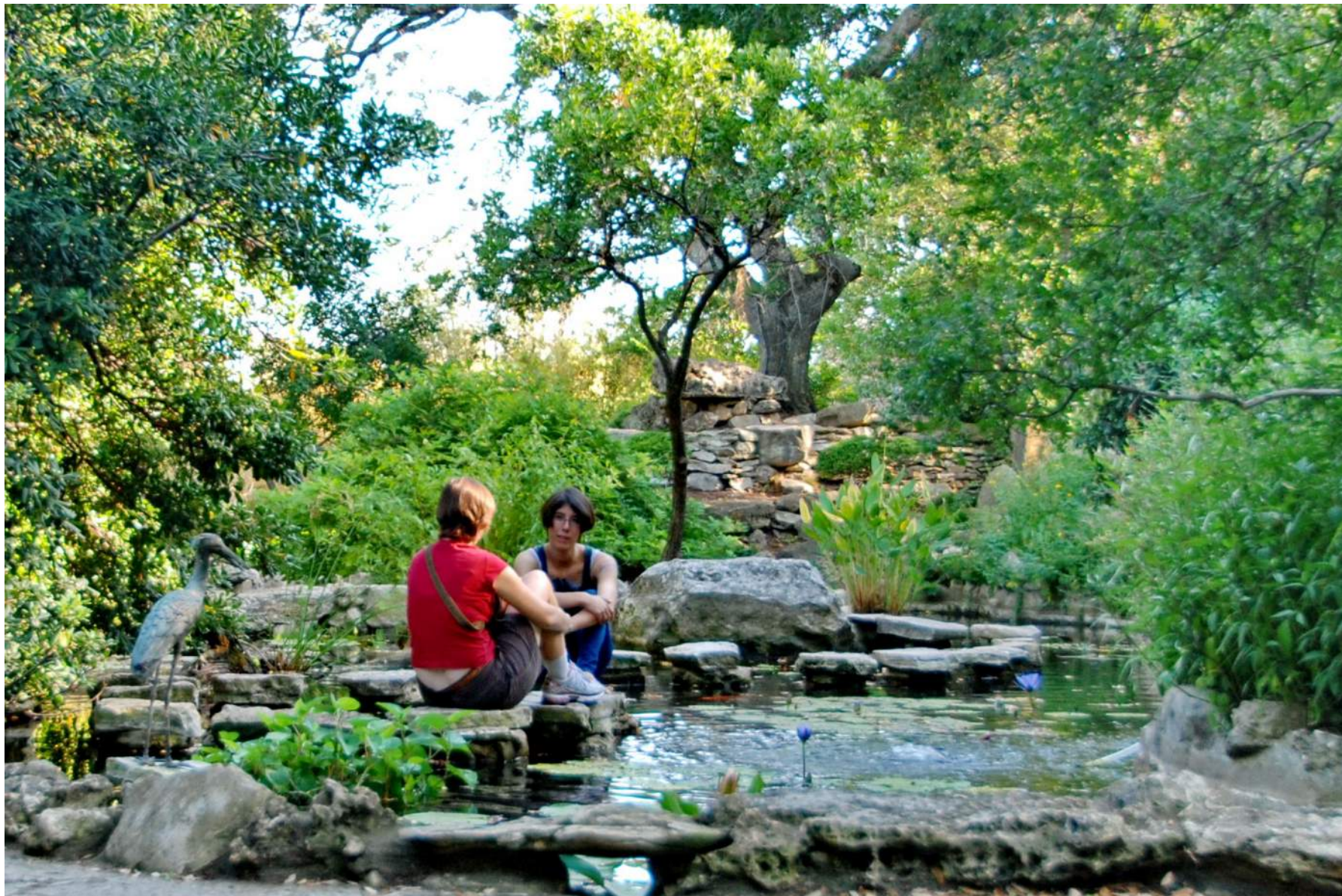
# ZILKER PARK: AN AUSTIN TREASURE



Barton Springs



Great Lawn and Rock Island



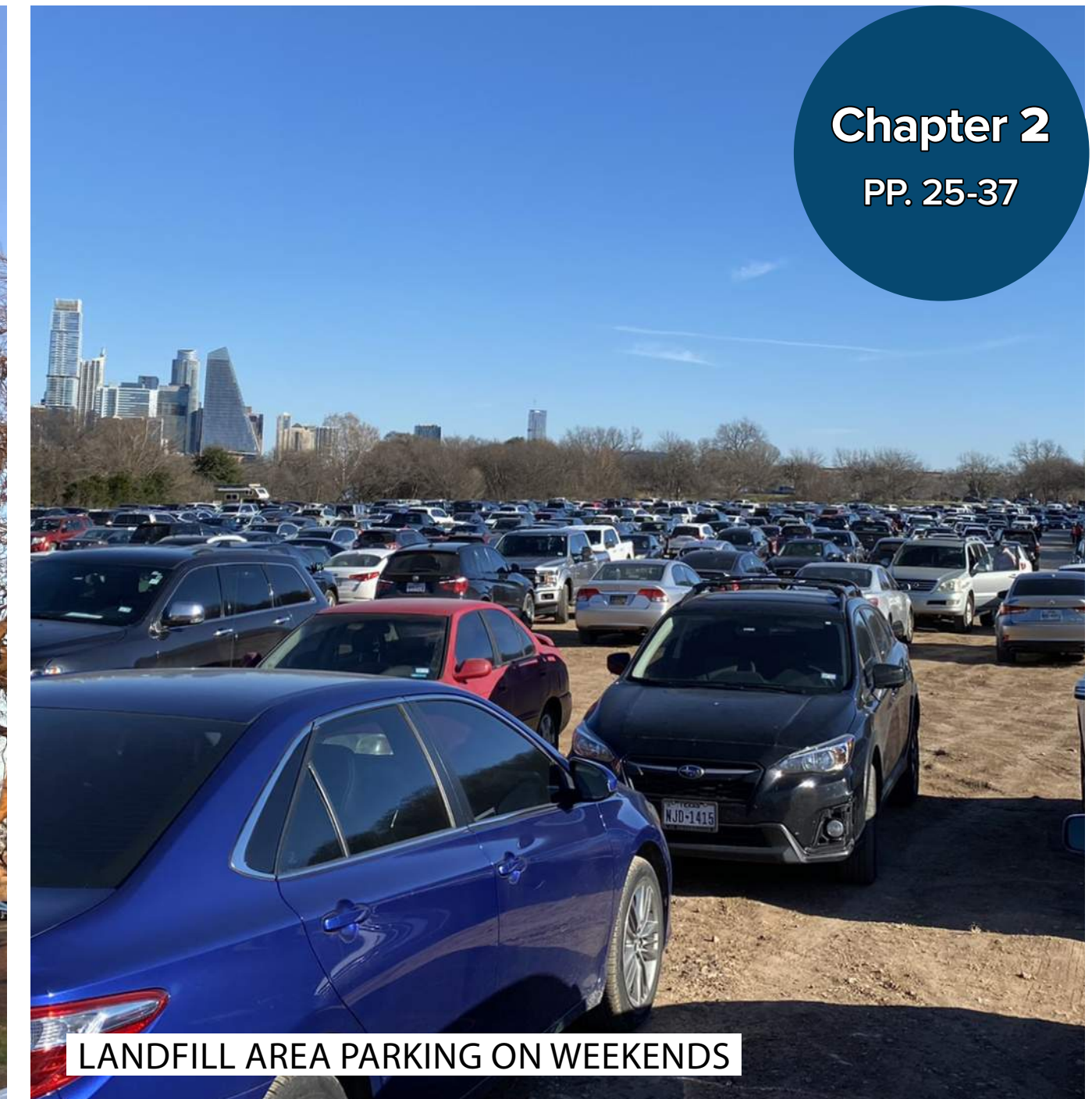
# CALL TO ACTION

How well are the following facilities or amenities meeting your and your family's needs?

NATURAL AREAS	80% MEET NEEDS		8% NO OPINION
PARKING AREAS	45% MEET NEEDS	46% DOES NOT MEET NEEDS	9% NO OPINION
PICNIC AREAS	59% MEET NEEDS	17% DOES NOT MEET NEEDS	24% NO OPINION
SPORT COURTS OR FIELDS	45% MEET NEEDS	15% DOES NOT MEET NEEDS	40% NO OPINION
TRAILS	79% MEET NEEDS	13% DOES NOT MEET NEEDS	7% NO OPINION
WATER ACCESS POINTS FOR PERSONAL WATERCRAFT	34% MEET NEEDS	22% DOES NOT MEET NEEDS	44% NO OPINION
WATERFRONT VIEWING AREAS	60% MEET NEEDS	22% DOES NOT MEET NEEDS	18% NO OPINION



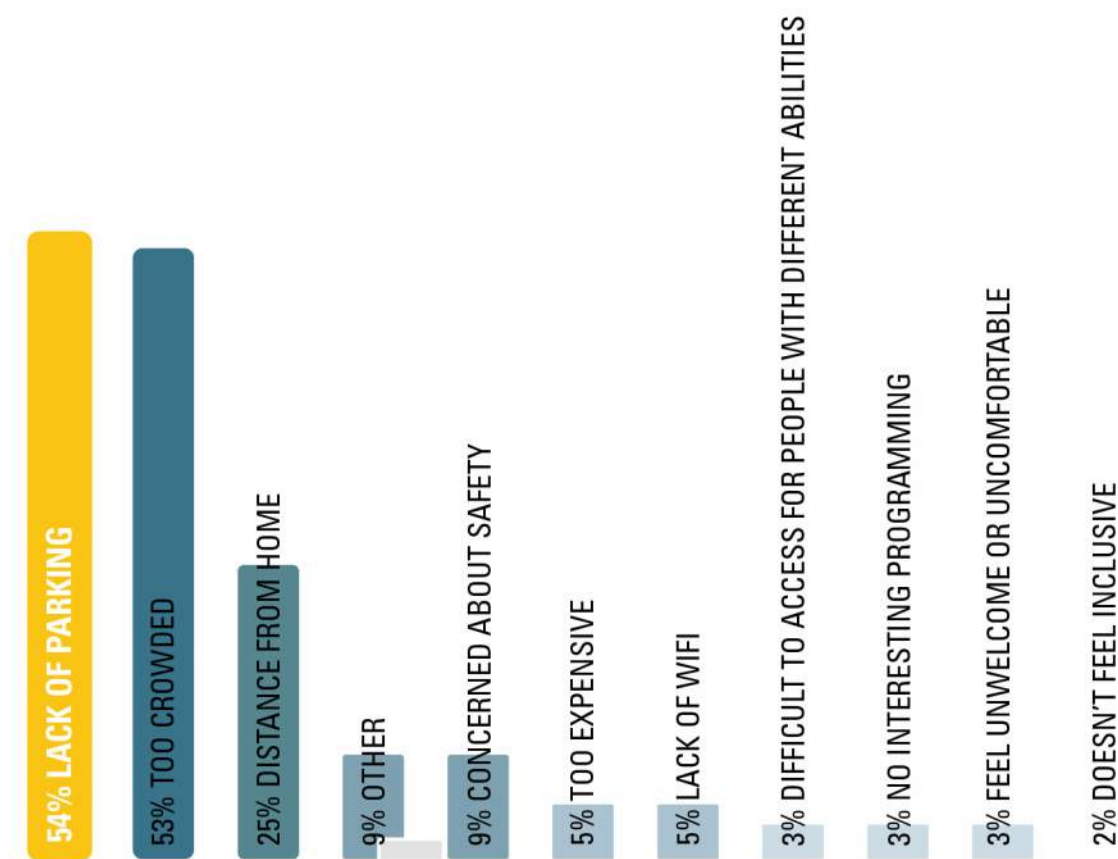
PARKING ON THE LAWN AREA



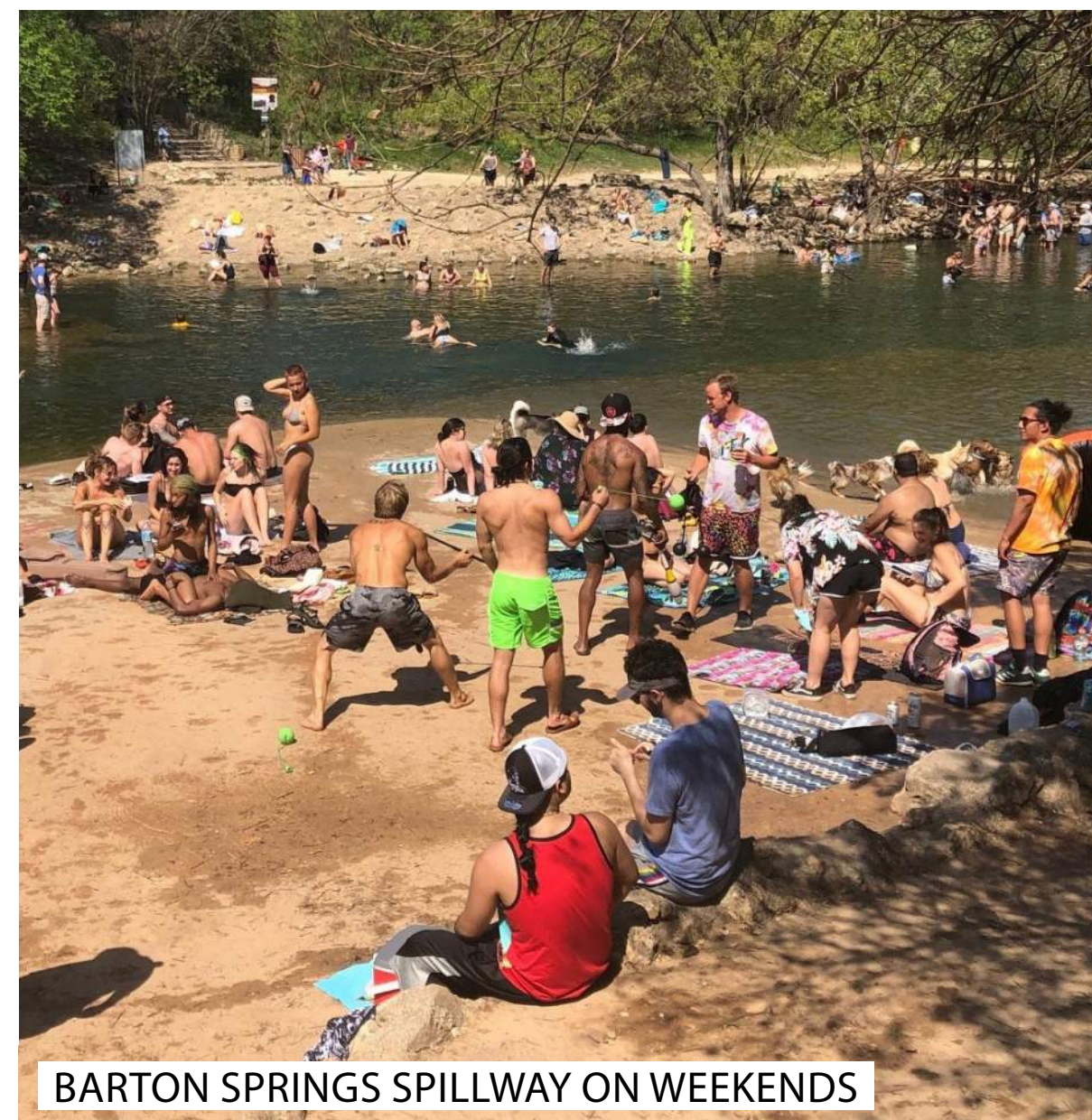
LANDFILL AREA PARKING ON WEEKENDS

Chapter 2  
PP. 25-37

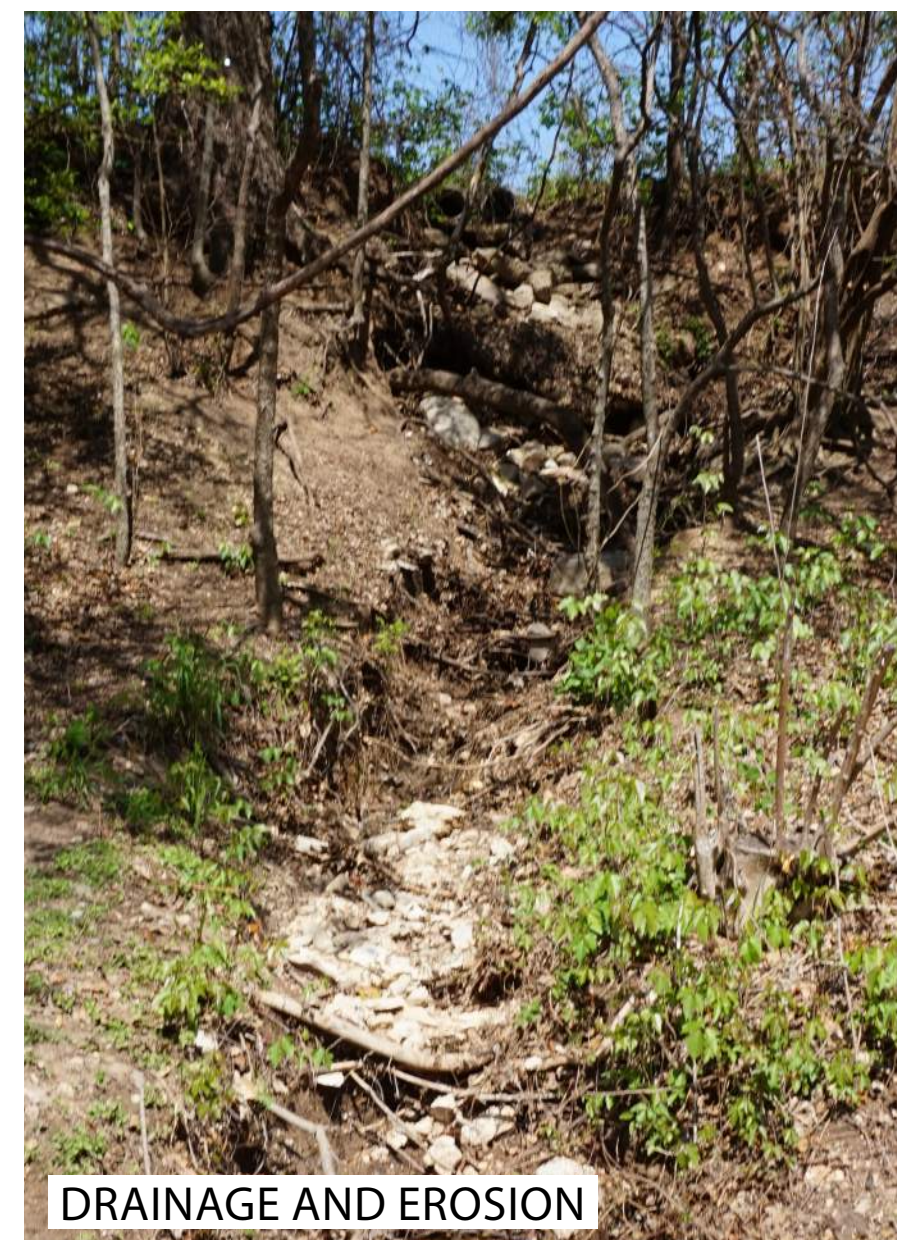
If you DO NOT visit or avoid visiting Zilker Park, why?



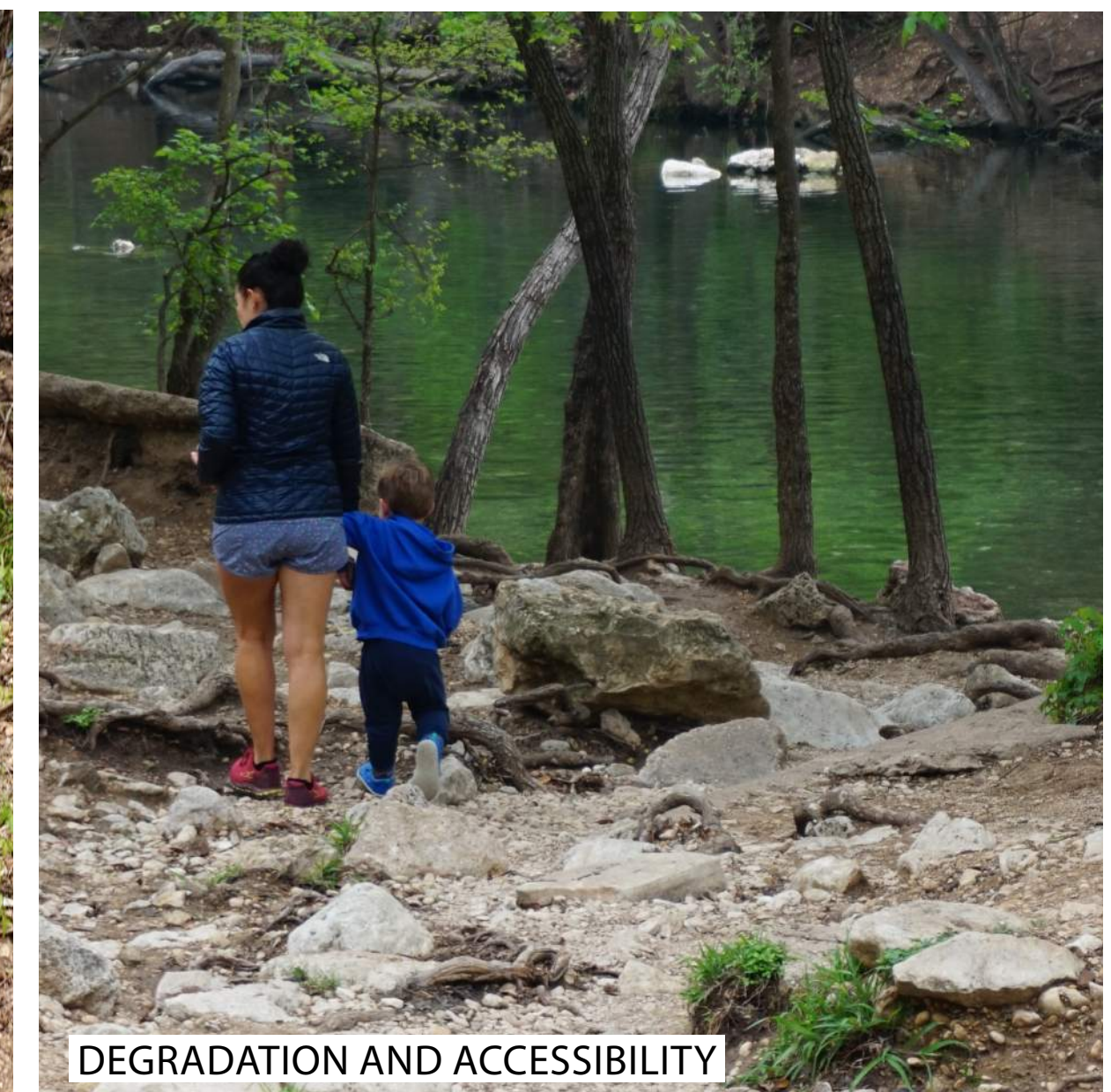
54% Lack of Parking



BARTON SPRINGS SPILLWAY ON WEEKENDS



DRAINAGE AND EROSION



DEGRADATION AND ACCESSIBILITY

# GUIDING PRINCIPLES AND GOALS



**Sustainability**



**Accessibility**



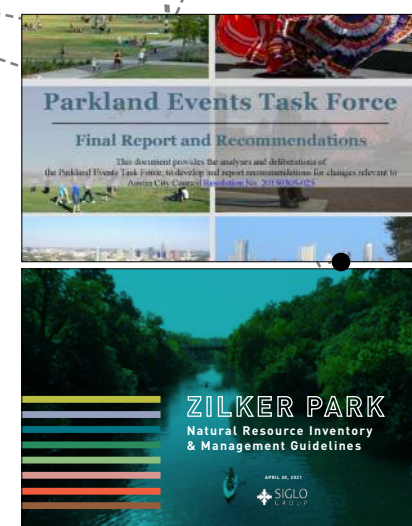
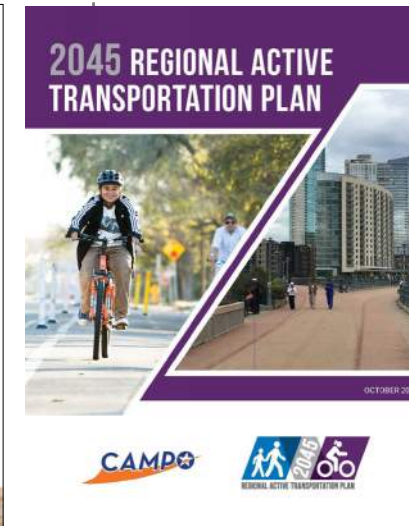
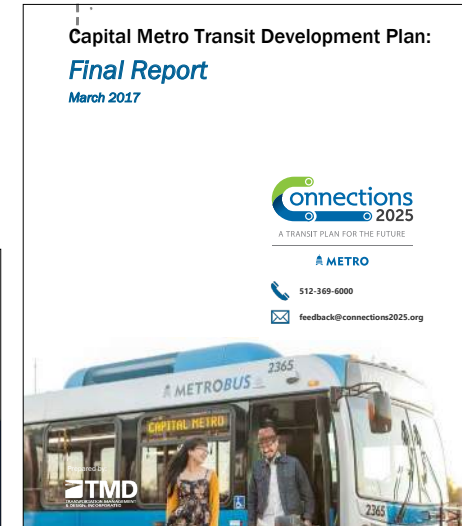
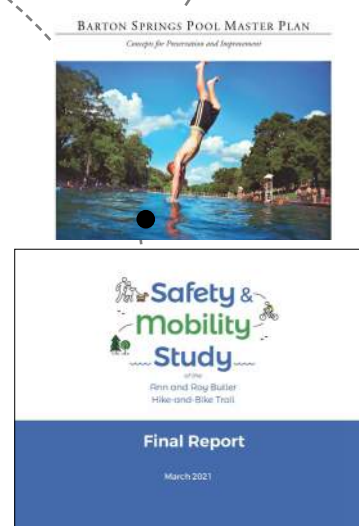
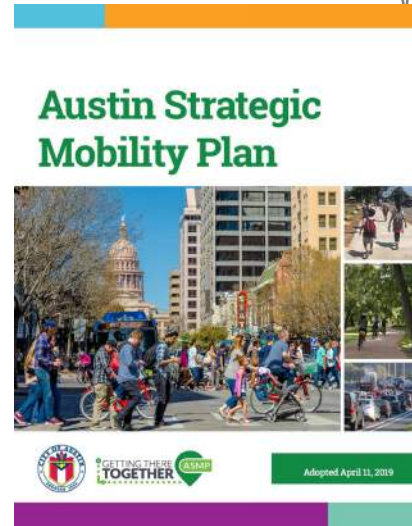
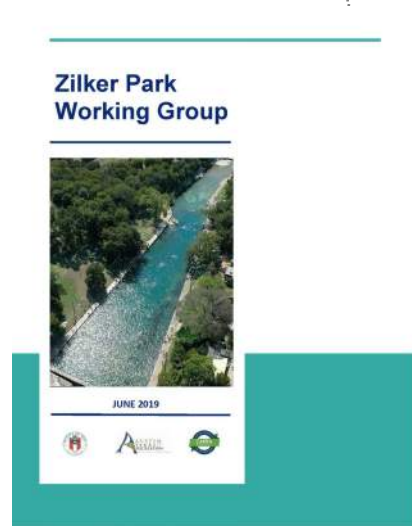
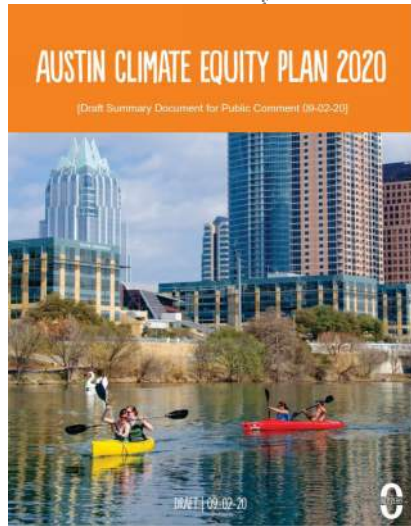
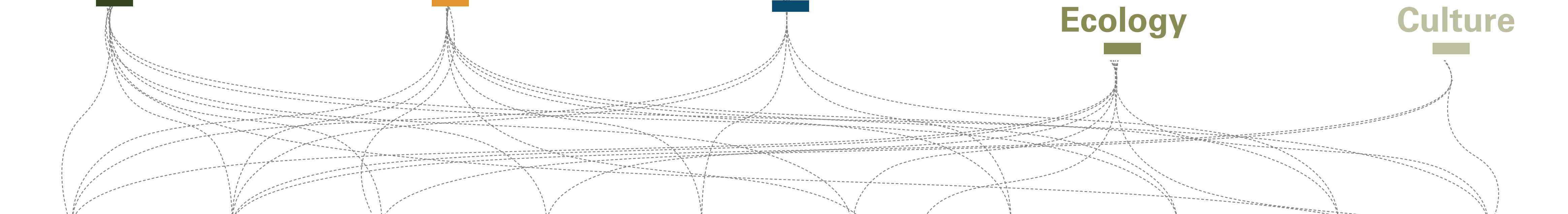
**Equity**



**Nature and Ecology**



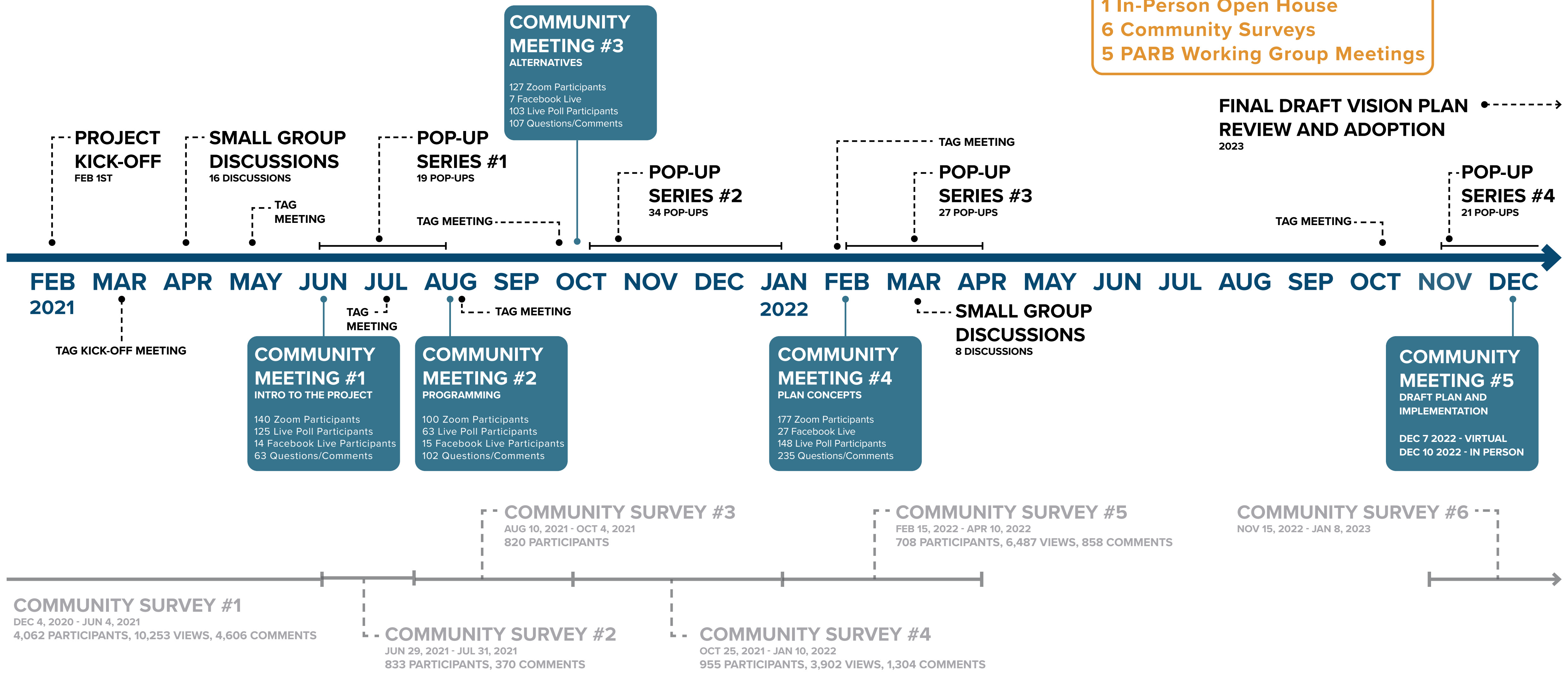
**History and Culture**



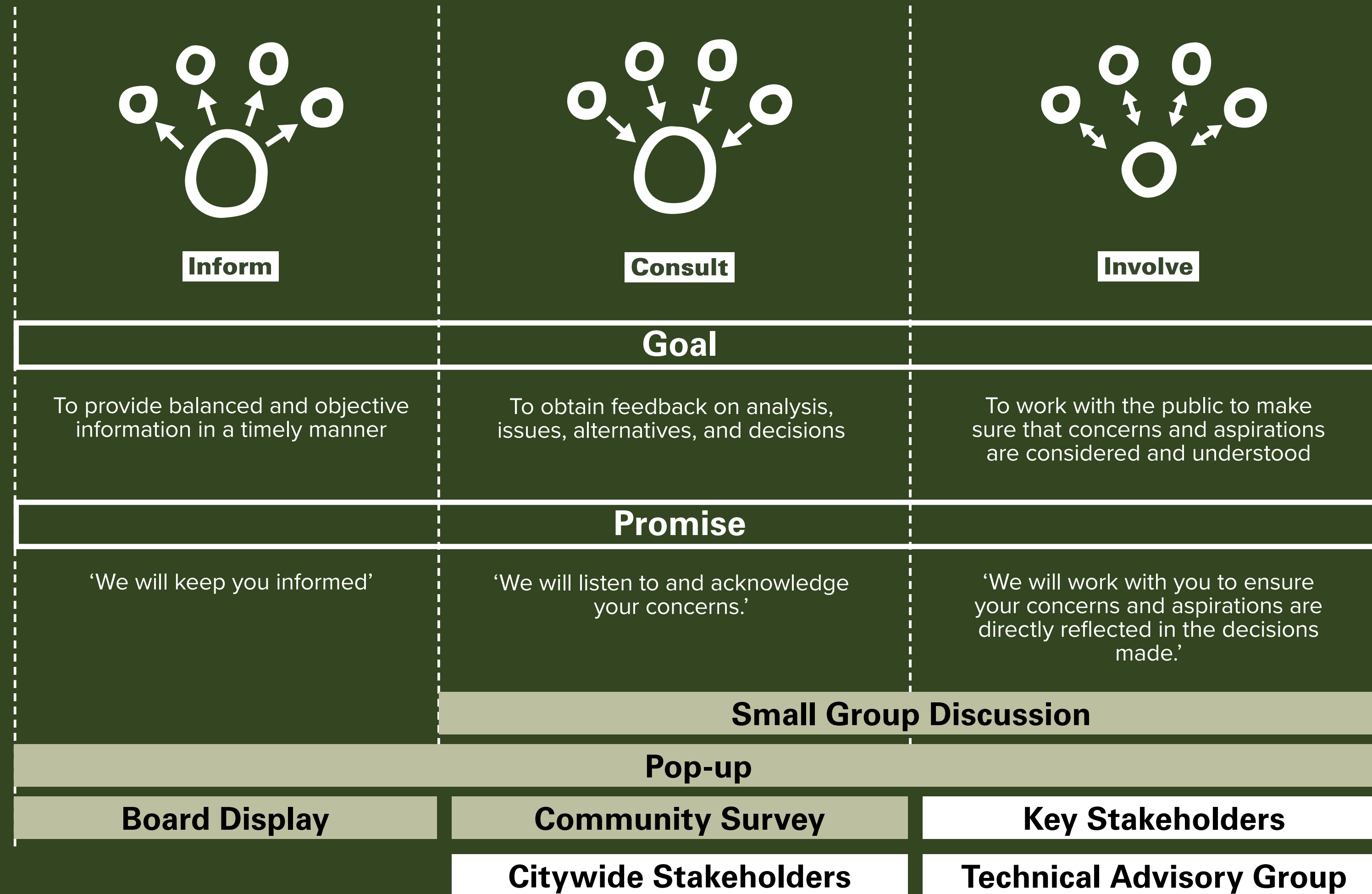
# ZILKER PARK VISION PLAN

## Project Schedule

101 Pop-Ups  
24 Small Group Discussions  
7 TAG Meetings  
5 Virtual Meetings  
1 In-Person Open House  
6 Community Surveys  
5 PARB Working Group Meetings



IAP2 SPECTRUM OF PUBLIC PARTICIPATION



- Internal City of Austin Stakeholders
- PARD Parkners at Zilker
- Concessionaires
- Nonprofit Organizations
- Citywide Organizations
- Local Businesses
- Event/Festival Organizers
- Organized Sports
- Neighborhood Associations
- Cities Connecting Children to Nature Partners
- Academic Institutions
- City-level Governmental Agencies

- Parks & Recreation Department
- Austin Transportation Department
- CapMetro
- Texas Department of Transportation
- Public Works
- Watershed Protection
- Office of Real Estate Services
- Communications and Public Information
- Austin Water
- Austin Energy
- Housing and Planning
- Office of Sustainability
- Austin Resource Recovery
- Austin Fire Department
- Public Works Department
- Watershed Protection Department



Sustainability



Accessibility



Equity, Diversity, and Inclusion



Nature and Ecology



History and Culture

# COMMUNITY ENGAGEMENT

Community Meeting #5 and Survey #6

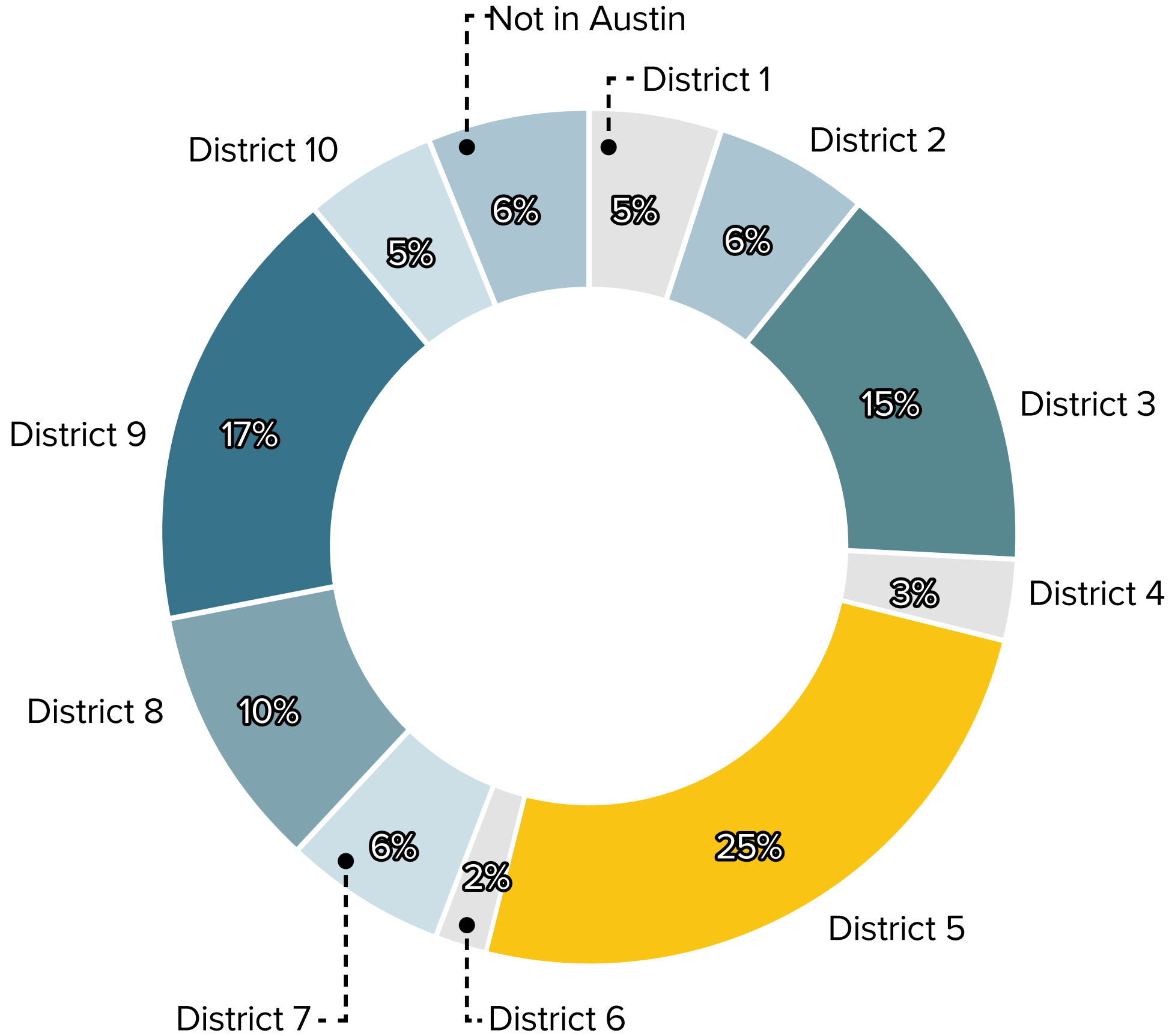
**MEETING PARTICIPANTS**

**148**  
Zoom Participants

**77**  
Live Poll Participation

**130**  
Open House Attendees

**298**  
Questions/Comments from Open House



**OPEN HOUSE PARTICIPANTS**

**COMMUNITY SURVEY #6**

**2,898 Participants, 3,430 Comments, More than 2,300 Commenters, 26,904 Views**

**About 30% of commenters reside around Zilker Park (Zip Code: 78704, 78746)**

**There are more than 6,000 views on the draft walk through video.**



# COMMUNITY ENGAGEMENT

Changes after Community Meeting #5 and Survey #6



Sustainability



Accessibility



Equity, Diversity, and Inclusion



Nature and Ecology



History and Culture



Kept Rowing Dock in existing location

Kept Disc Golf Course layout and added Warm-Up Area

Relocated and reduced Sports Area

Reduced the size of playscapes

# EXTERNAL SHUTTLE

## CONNECTING TRANSPORTATION HUBS AND EXTERNAL PARKING GARAGES



Sustainability



Accessibility



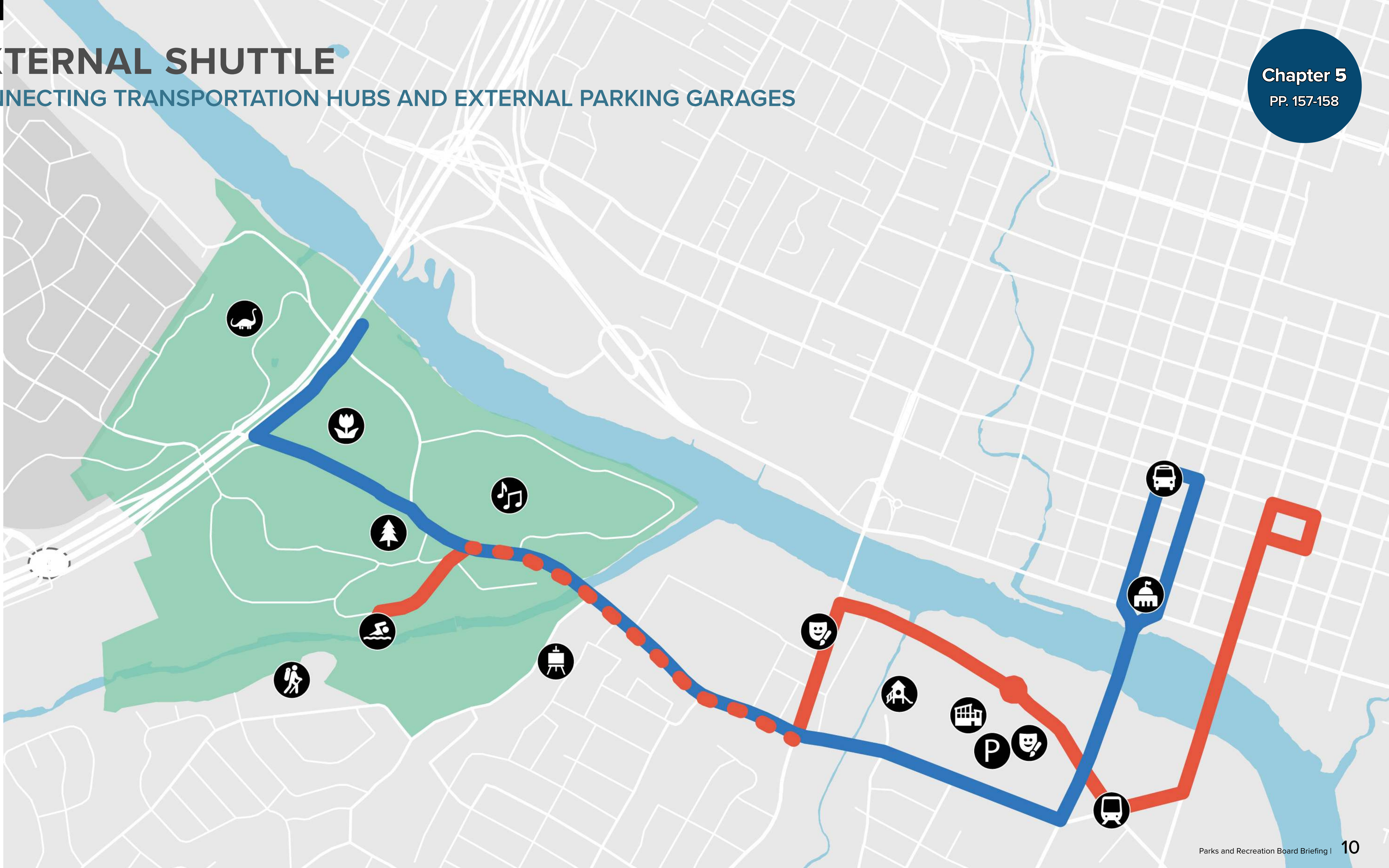
Equity, Diversity, and Inclusion



Nature and Ecology



History and Culture



# ACCESSIBILITY AND MOBILITY

## VEHICULAR CIRCULATION



Sustainability



Accessibility



Equity, Diversity, and Inclusion



Nature and Ecology



History and Culture



	EXISTING	PROPOSED
<b>Parking</b>	<b>2,450</b> Spaces	<b>2,450</b> Spaces
Formal Parking	1,300 Spaces	2,450 Spaces
Informal Parking	1,150 Spaces	0 Spaces
<b>Impervious Cover</b>	<b>36</b> Acres	<b>27</b> Acres
Roads	20.9 Acres	19.9 Acres
Parking Lots	12.52 Acres	3.5 Acres
Programs	2.5 Acres	10.87 Acres

-  Traffic Light
-  Parking Garage
-  Vehicular Stop Sign
-  Street Parking along Barton Springs Road
-  CapMetro Stop
-  Surface Parking
-  Internal Shuttle Stop
-  Zilker Eagle Stop

# ACCESSIBILITY AND MOBILITY

## PROPOSED BARTON SPRINGS ROAD CONFIGURATION



Sustainability



Accessibility



Equity, Diversity, and Inclusion



Nature and Ecology

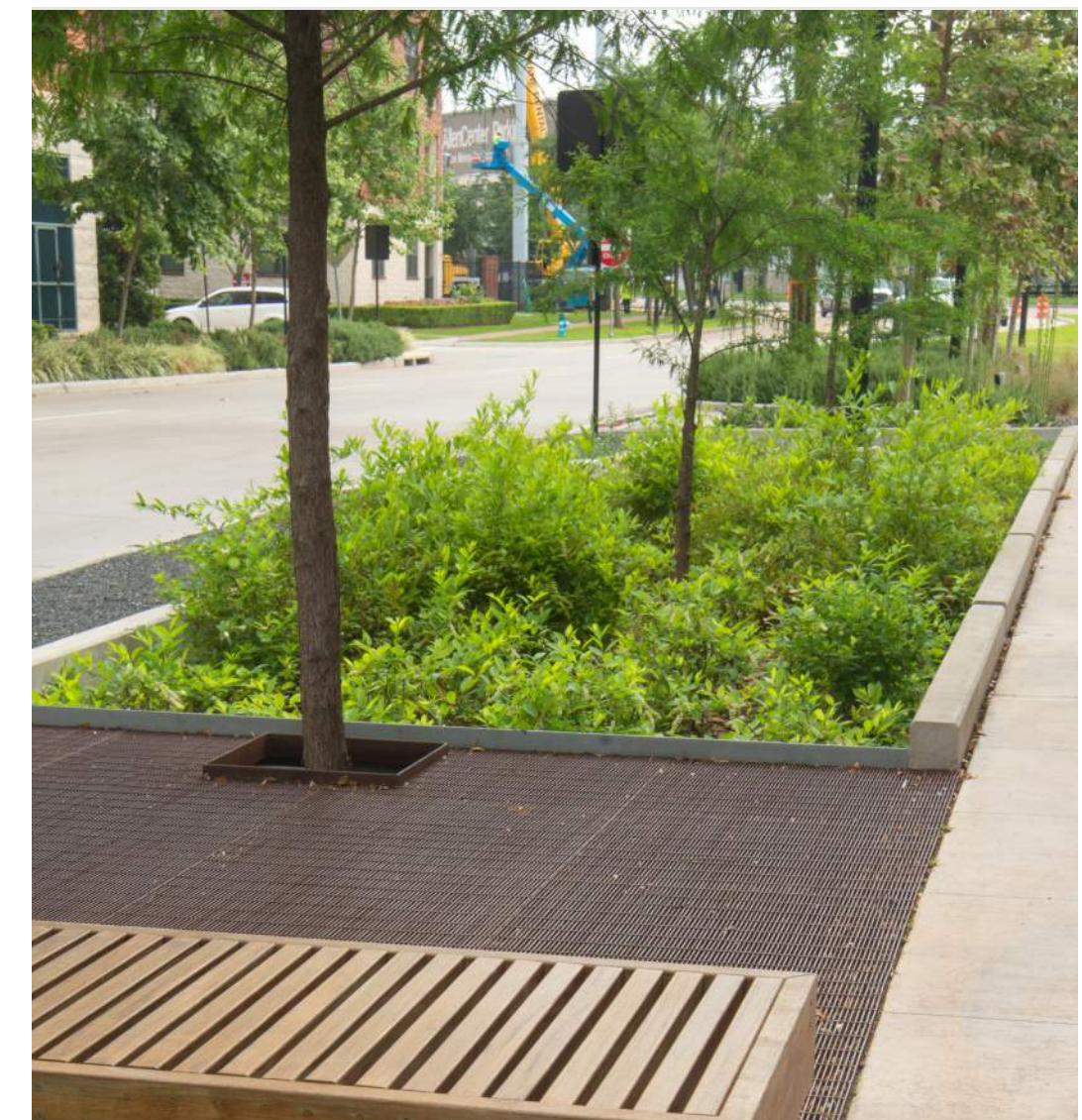
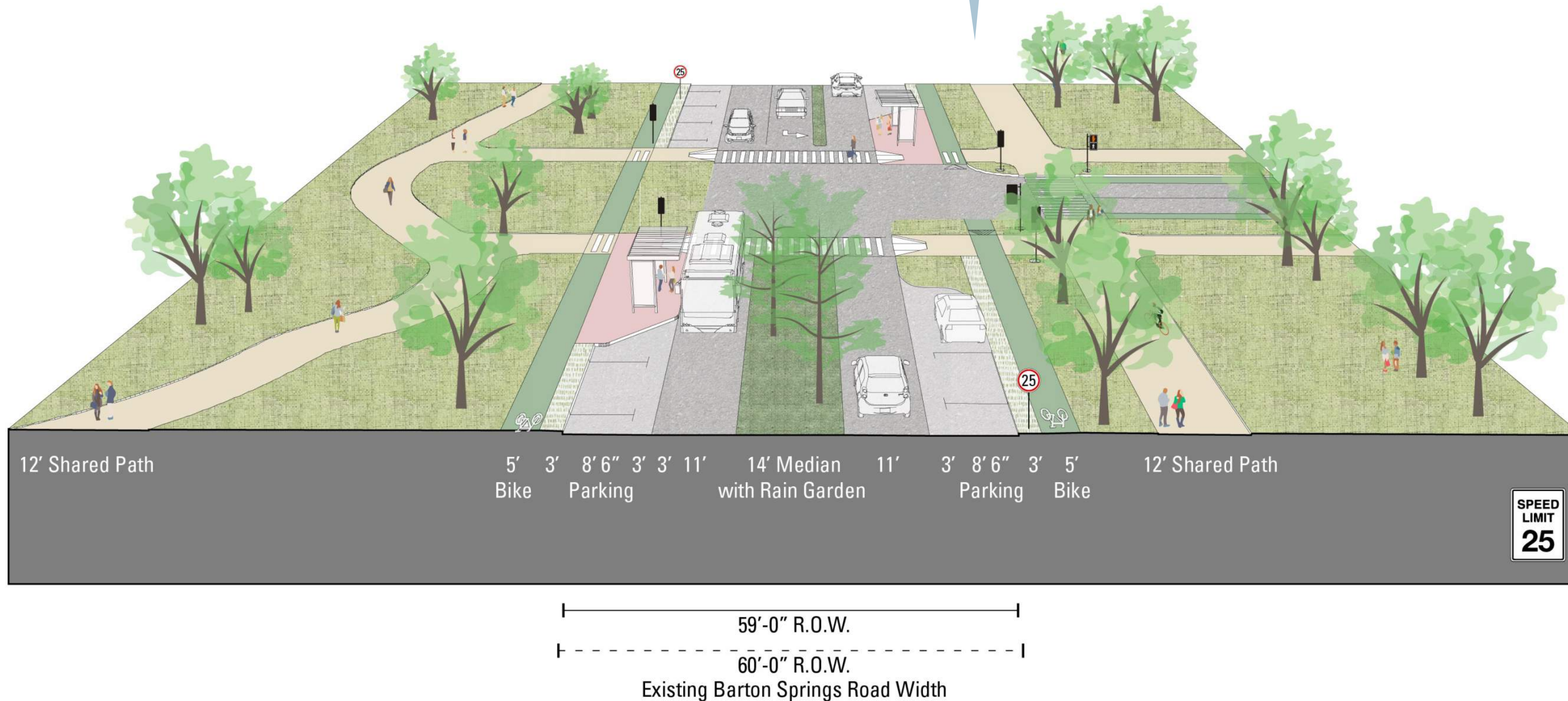


History and Culture

### WHAT ABOUT CAPACITY?

There is often concern about reducing the capacity of a four-lane undivided roadway in half by converting it to a two-lane with a turn lane cross section. Practitioners have found some cases of the four-lane undivided road operating as a de facto two-lane with a turn lane roadway due to turning movements and driver behavior. Therefore, the effective capacity reduction is much less than the theoretical reduction assumed before implementation.

Source: Road Diet Informational Guide, FHWA Safety Program, US Department of Transportation Federal Highway Administration. [https://safety.fhwa.dot.gov/road\\_diets/guidance/info\\_guide/rdig.pdf](https://safety.fhwa.dot.gov/road_diets/guidance/info_guide/rdig.pdf)



# ACCESSIBILITY AND MOBILITY

## PEDESTRIAN AND BIKE CIRCULATION



Sustainability



Accessibility



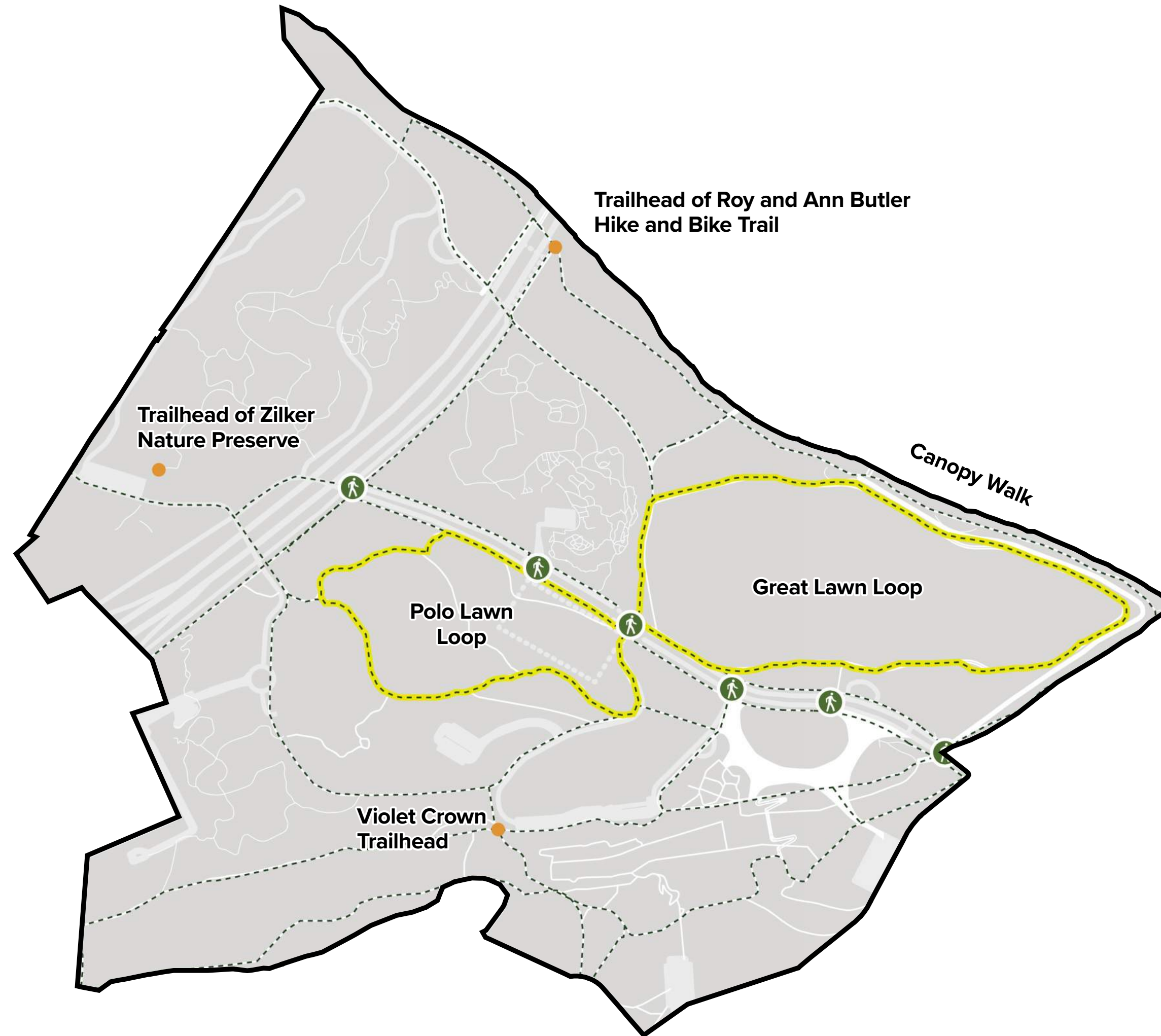
Equity, Diversity, and Inclusion



Nature and Ecology



History and Culture



**Canopy Walk in Serravalles Park.**

Source: <https://scalemag.online/architecture/the-canopy-walkway-in-serravalles-park/>

	EXISTING	PROPOSED
Trails	12.6 Miles	19.5 Miles

+55%

- Trailhead
- Vehicular Network
- Loop Trail
- Pedestrian and Bike Network
- Pedestrian Crossing
- Major Pedestrian/Bike Trail
- Minor Pedestrian/Bike Trail

# ECOLOGICAL UPLIFT

## THE UPLIFT IN ZILKER PARK



Sustainability



Accessibility



Equity, Diversity, and Inclusion



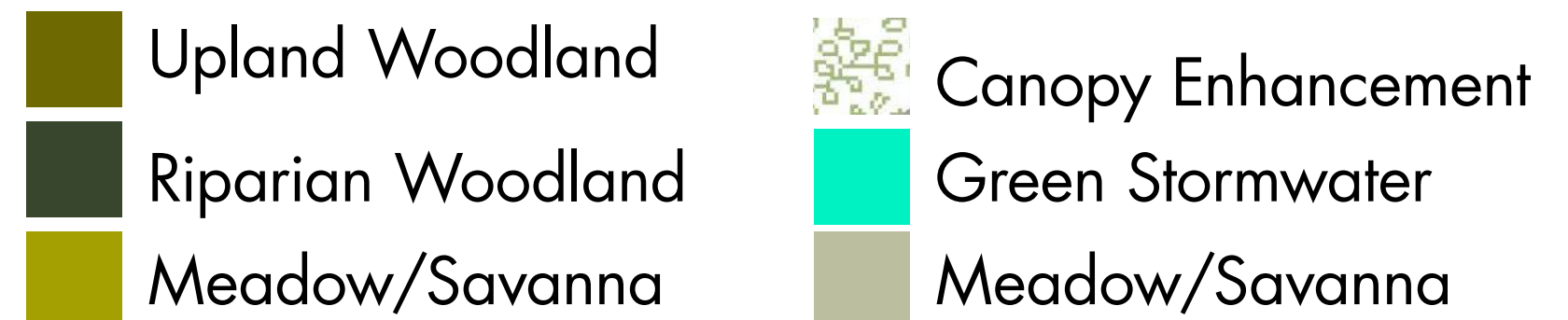
Nature and Ecology



History and Culture

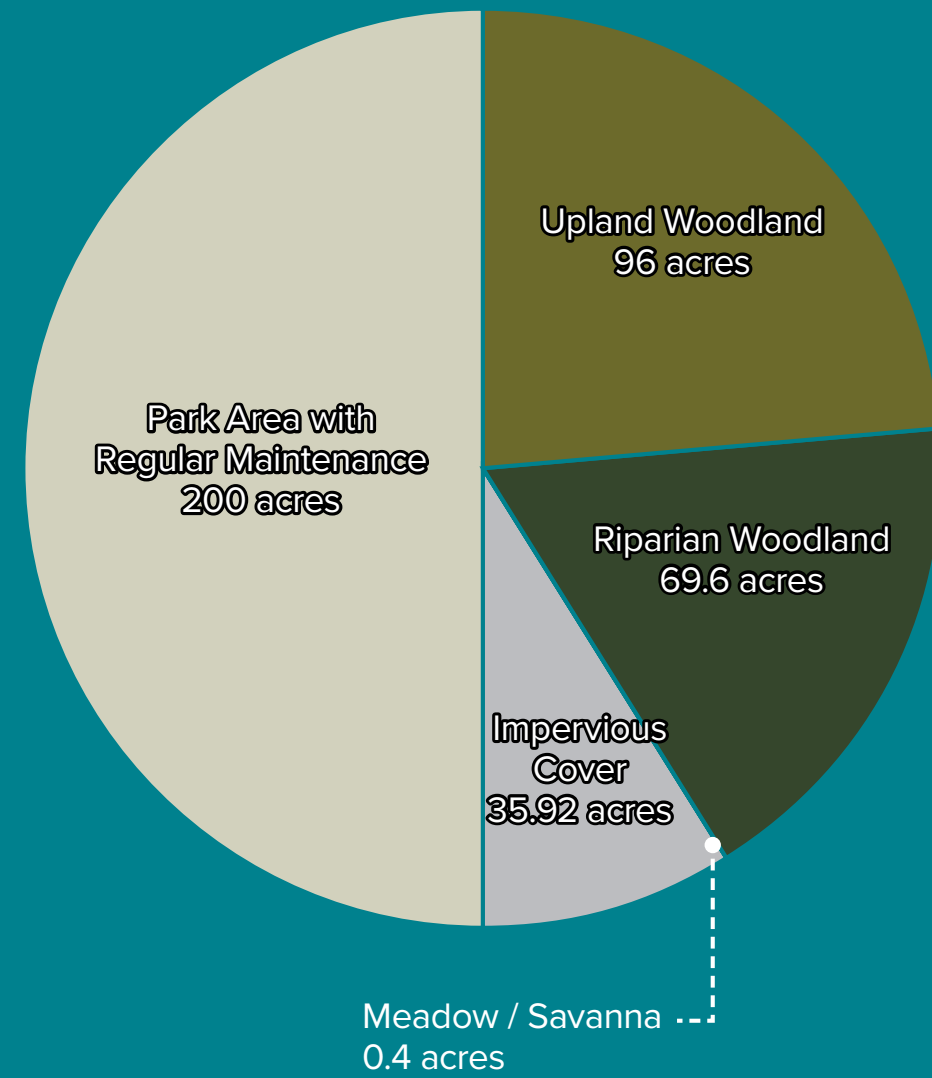


	EXISTING	PROPOSED	
<b>Total Natural Area</b>	<b>166</b> Acres	<b>256</b> Acres	<b>+92</b> Acres
<b>Upland Woodland</b>	<b>96</b> Acres	<b>114</b> Acres	<b>+18</b> Acres
<b>Riparian Woodland</b>	<b>69.6</b> Acres	<b>82.6</b> Acres	<b>+13</b> Acres
<b>Meadow/Savanna</b>	<b>0.4</b> Acres	<b>49.3</b> Acres	<b>+49</b> Acres
<b>Canopy Enhancement</b>	-	<b>10</b> Acres	<b>+10</b> Acres
<b>Green Stormwater</b>	-	<b>2</b> Acres	<b>+2</b> Acres
<b>Impervious Cover</b>	<b>36</b> Acres	<b>27</b> Acres	<b>-9</b> Acres



**EXISTING CONDITION**

**LANDCOVER**



**TOTAL CARBON IMPACT BY LANDCOVER**

HARDSCAPE	
Impervious Cover	+ 12,501 tCO <sup>2</sup>
SOFTSCAPE	
Upland Woodland	- 26,400 tCO <sup>2</sup>
Riparian Woodland	- 21,035 tCO <sup>2</sup>
Meadow / Savanna	- 26 tCO <sup>2</sup>
Park Area with Regular Maintenance	- 9,235 tCO <sup>2</sup>

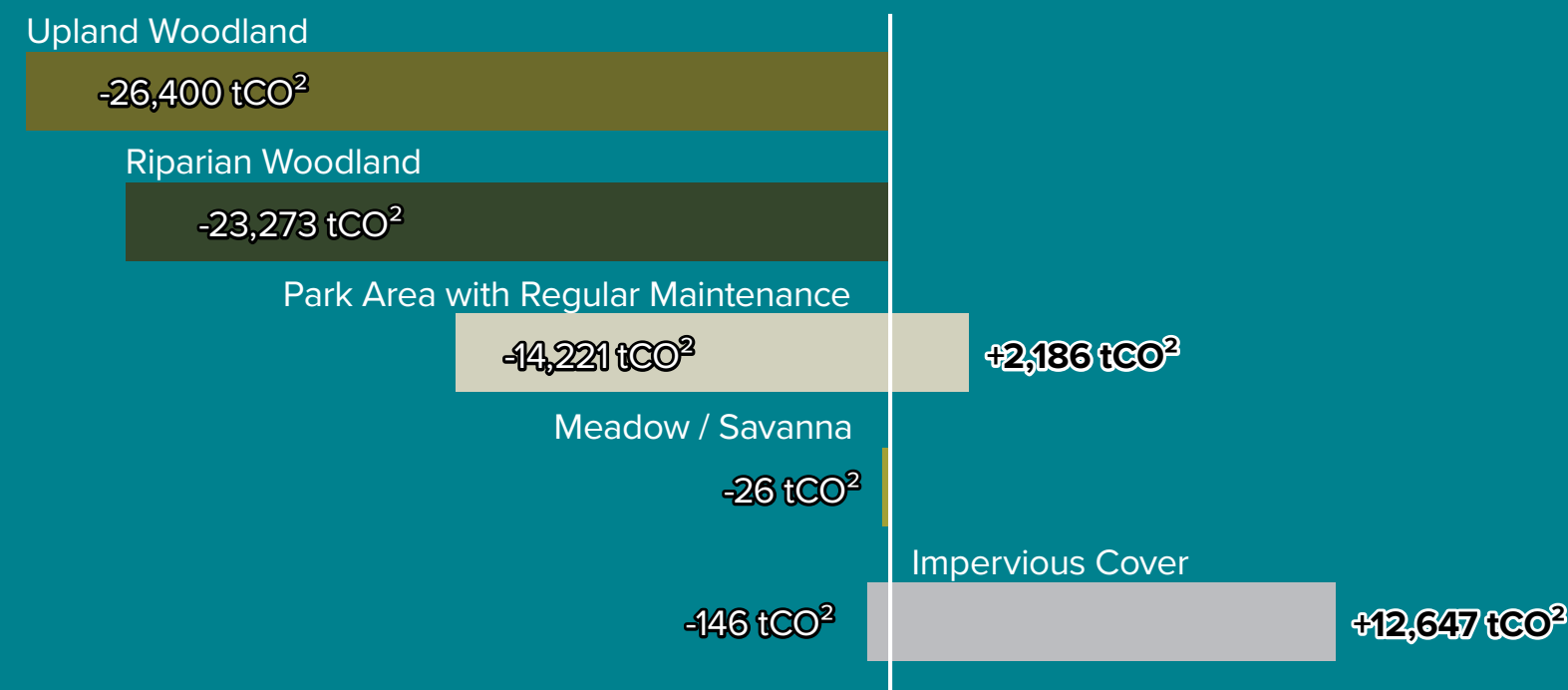
**STORED AND SEQUESTERED CARBON**

64,066 tCO<sup>2</sup> Stored

**- 43,842 tCO<sup>2</sup> Net**

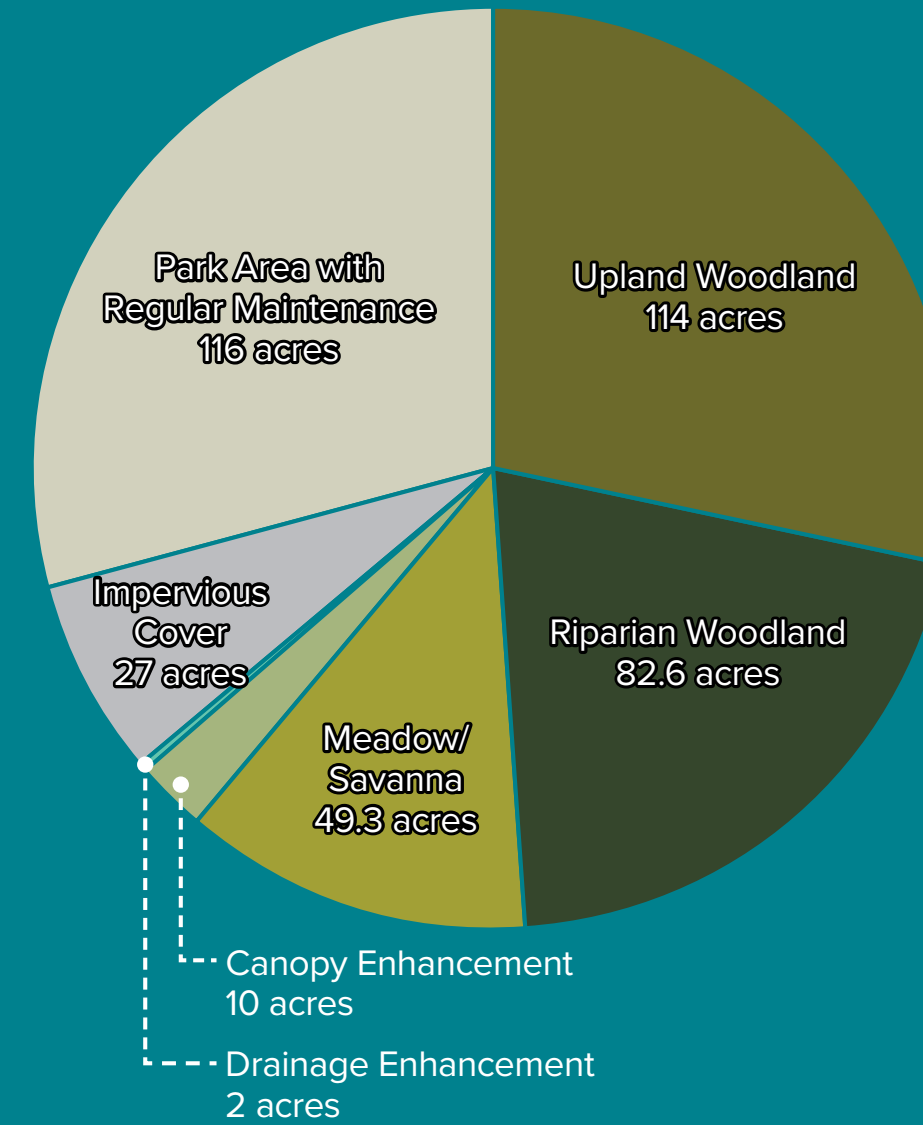
**EMITTED CARBON**

14,833 tCO<sup>2</sup> Emitted



**PROPOSED CONDITION**

**LANDCOVER**



**TOTAL CARBON IMPACT BY LANDCOVER**

HARDSCAPE	
Impervious Cover	+ 9,823 tCO <sup>2</sup>
SOFTSCAPE	
Upland Woodland	- 31,351 tCO <sup>2</sup>
Riparian Woodland	- 27,620 tCO <sup>2</sup>
Meadow / Savanna	- 3,247 tCO <sup>2</sup>
Drainage Enhancement	- 452 tCO <sup>2</sup>
Canopy Enhancement	- 88 tCO <sup>2</sup>
Park Area with Regular Maintenance	- 6,992 tCO <sup>2</sup>

**+28%**

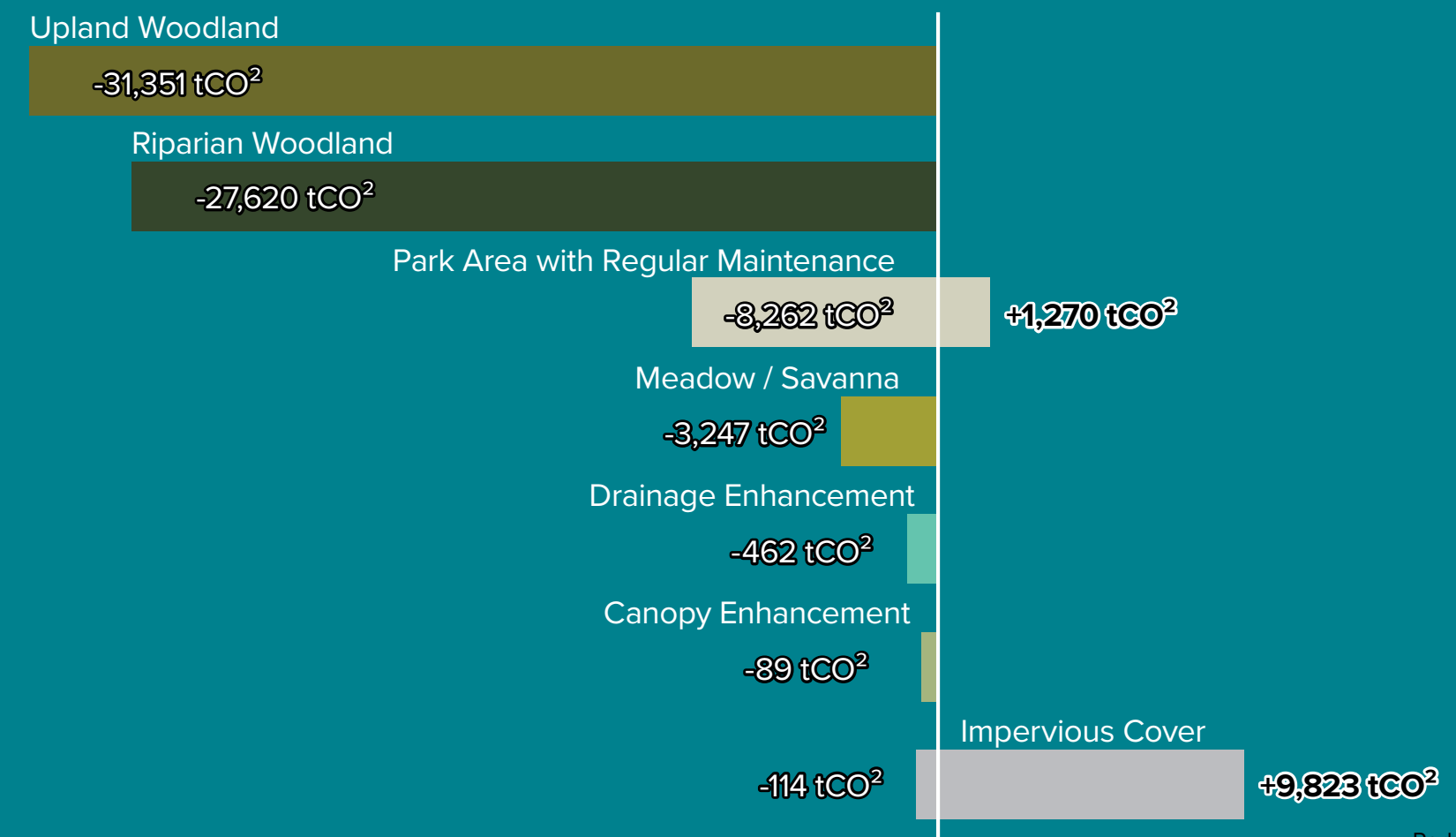
**STORED AND SEQUESTERED CARBON**

71,145 tCO<sup>2</sup> Stored

**- 56,025 tCO<sup>2</sup> Net**

**EMITTED CARBON**

11,104 tCO<sup>2</sup> Emitted



Sustainability



Accessibility



Equity, Diversity, and Inclusion



Nature and Ecology



History and Culture



Sustainability



Accessibility



Equity, Diversity, and Inclusion



Nature and Ecology



History and Culture





# ECOLOGICAL UPLIFT ON LANDFILL AREA



Sustainability



Accessibility



Equity, Diversity, and Inclusion



Nature and Ecology



History and Culture





Sustainability



Accessibility



Equity, Diversity, and Inclusion



Nature and Ecology



History and Culture

TRAILHEAD OF ZILKER NATURE PRESERVE TRAIL

NATURE PLAY

PICNIC AREA

DISC GOLF AREA

CONCESSION

CHILDREN'S PLAY  
SPORTS AREA

BASEBALL FIELD

DISC GOLF WARM-UP AREA

VOLLEYBALL COURTS

POLO FIELD LAWN

INFO CENTER

LAND BRIDGE

ZILKER HILLSIDE THEATER

ROCK ISLAND

GREAT LAWN

DISC GOLF AREA

NEW MAINTENANCE FACILITY

SUNSHINE CAMP

NEW ENTRY ROAD TO SUNSHINE CAMP

UNDERGROUND PARKING GARAGE

PLAYGROUND

MOON TOWER

ENTRANCE TO PARKING GARAGE

BARTON SPRINGS RD

ENHANCED RUGBY FIELD

ROCK GARDEN

ENHANCED PLAYGROUND

WELCOME PLAZA

TERRACE

ZILKER BOAT

TRAILHEAD

# ZILKER LAND BRIDGE



Sustainability



Accessibility



Equity, Diversity, and Inclusion



Nature and Ecology



History and Culture





Sustainability



Accessibility



Equity, Diversity, and Inclusion



Nature and Ecology



History and Culture



# ZILKER HILLSIDE THEATER



Sustainability



Accessibility



Equity, Diversity, and Inclusion



Nature and Ecology



History and Culture





POLO FIELD

GREAT LAWN

DISC GOLF AREA

PLAYGROUND

ENTRANCE TO PARKING GARAGE

MOON TOWER

BARTON SPRINGS RD

PICNIC AREA

ANDREW ZILKER RD

NEW ENTRY ROAD TO SUNSHINE CAMP

ENHANCED RUGBY FIELD

ROCK GARDEN

PECAN GROVE PICNIC AREA

COLUMBUS DR

ENHANCED PLAYGROUND

WELCOME PLAZA

ZILKER EAGLE MAINTENANCE YARD

VIOLET CROWN TRAILHEAD

TERRACE

NEW PED/BIKE BRIDGE

NEW PED/BIKE BRIDGE

BARTON SPRINGS POOL

ZILKER PARK BOAT RENTALS

PARKING GARAGE

SUNKEN GARDEN

SOUTH PICNIC AREA

MONKEY TREE LAWN

TODDLER PLAYGROUND

PLAYGROUND



Sustainability



Accessibility



Equity, Diversity, and Inclusion



Nature and Ecology



History and Culture

# BARTON SPRINGS SPILLWAY



Sustainability



Accessibility



Equity, Diversity, and Inclusion



Nature and Ecology



History and Culture





Sustainability



Accessibility



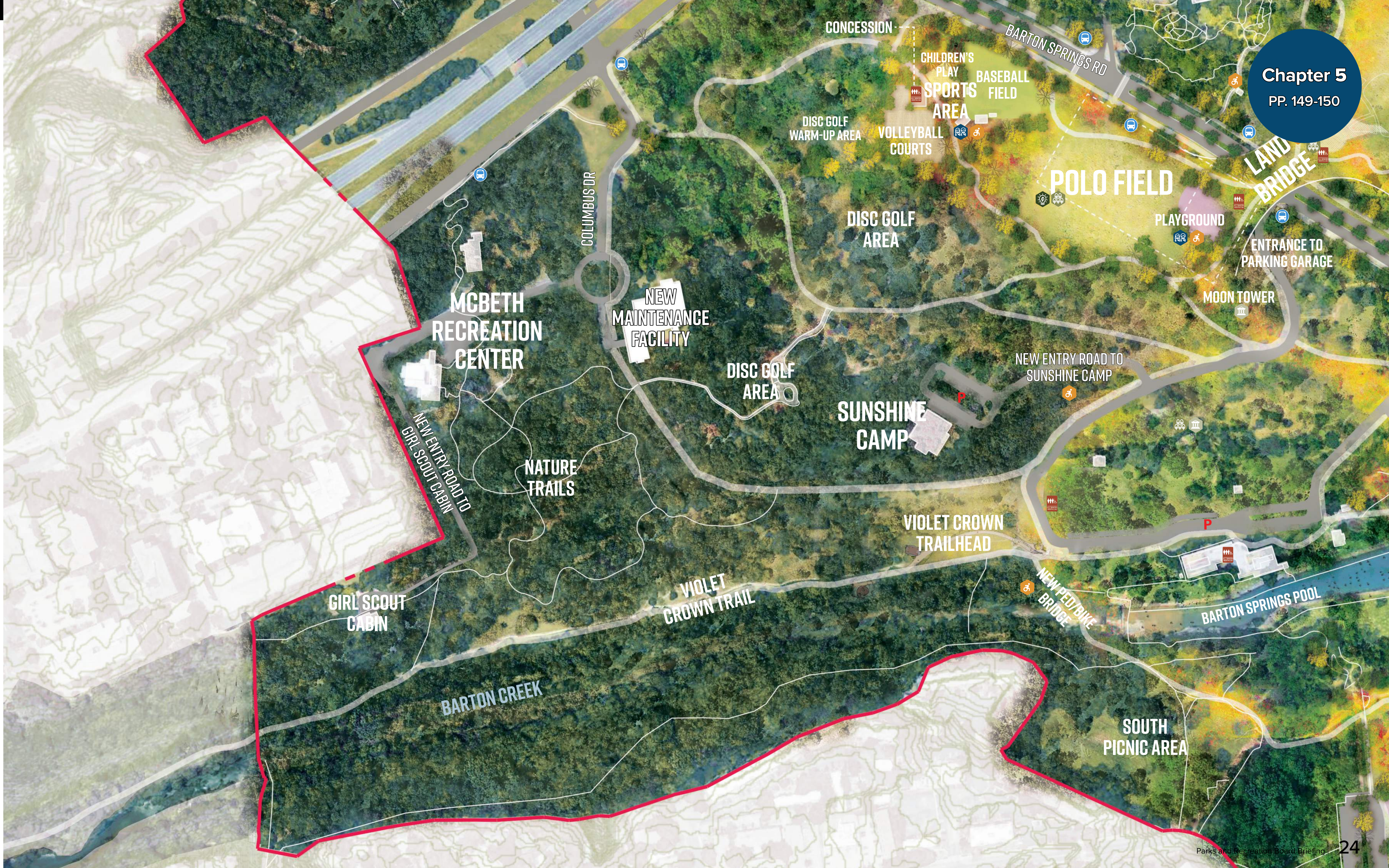
Equity, Diversity, and Inclusion



Nature and Ecology



History and Culture





# CHILDREN'S PLAY AT SPORTS AREA



Sustainability



Accessibility



Equity, Diversity, and Inclusion



Nature and Ecology



History and Culture



# IMPLEMENTATION PROJECTS

## ADMINISTRATION

ANNUAL BUDGET/ MAINTENANCE REVIEW	ZILKER PARK UMBRELLA ORGANIZATION
DIVERSE VENDORS AND OFFERINGS	DEPARTMENTAL PARTNERSHIPS
ESTABLISHING PARTNERSHIPS	

## ECOLOGICAL UPLIFT

DRAINAGE IMPROVEMENTS	RESTORATION OF LANDFILL AREA
RESTORATION OF OLD ZILKER HILLSIDE AREA	MITIGATION OF EROSION ISSUES
INVASIVE PLANT CONTROL	RESTORATION OF POLO FIELD
RESTORATION OF BARTON CREEK BANKS	TREE CANOPY ENHANCEMENT

## ACCESSIBILITY

STRATFORD DR REALIGNMENT
ZILKER TRAILHEAD
WAYFINDING DESIGN
CANOPY WALK
REMOVAL OF SURFACE PARKING
UNDERGROUND PARKING GARAGE

ADDITIONAL AND RELOCATION OF BRIDGES ALONG BARTON CREEK
CLOSING LOU NEFF ROAD TO VEHICLES
INTERNAL SHUTTLE
ADDITIONAL TRAILS
BARTON SPRINGS ROAD IMPROVEMENTS

CLOSING ANDREW ZILKER ROAD FOR VEHICLES
PED/BIKE BRIDGE ON LBL
EXTENDED ZILKER EAGLE ROUTE
PARKING GARAGE(S)
NEW TRAILHEAD TO NATURE PRESERVE
EXTERNAL SHUTTLE

## FACILITY/PROGRAM

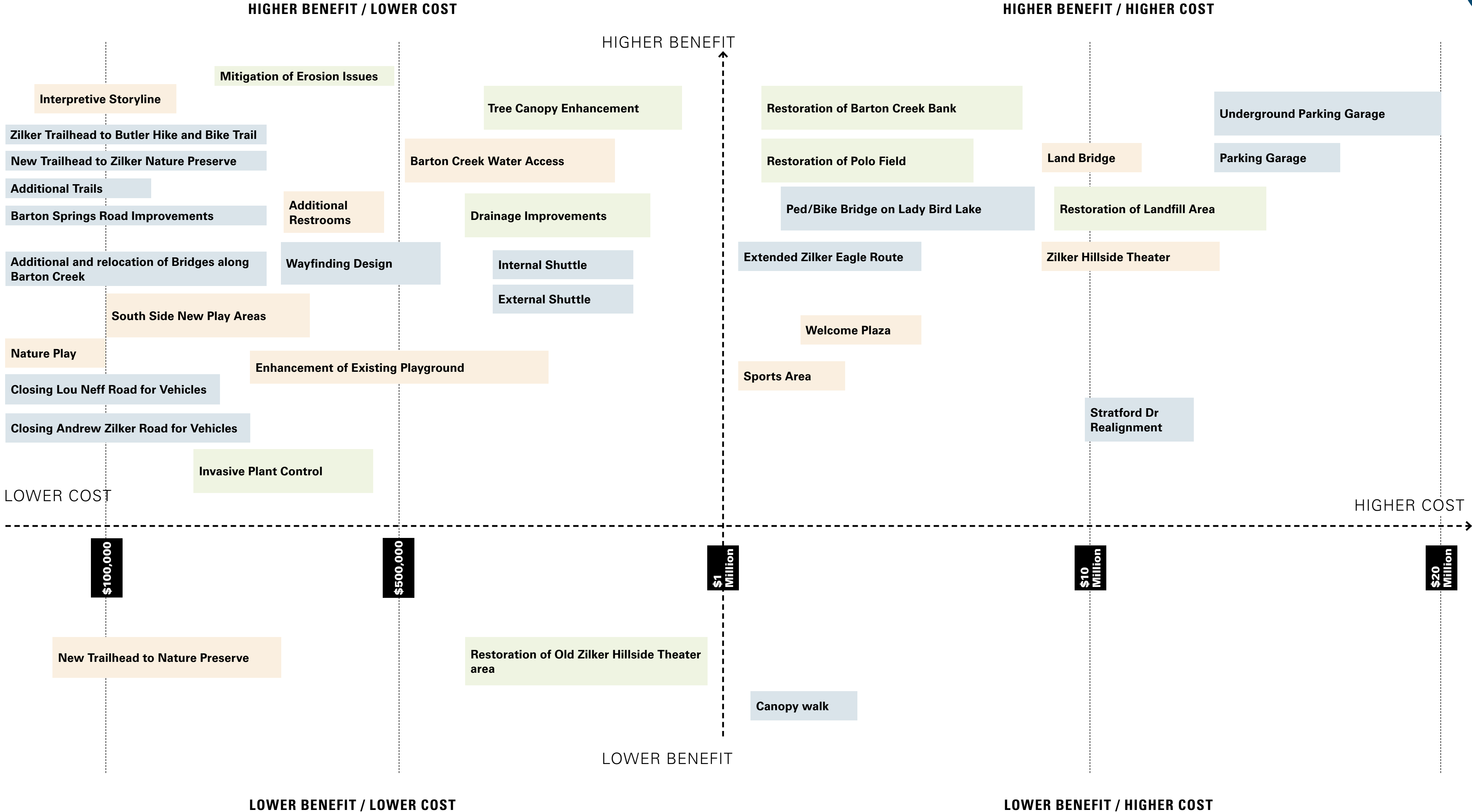
ENHANCEMENT OF EXISTING PLAYGROUND
PLAYGROUND NEAR THE LAND BRIDGE
NATURE PLAY
ADDITIONAL RESTROOMS

BARTON CREEK WATER ACCESS
NEW PICNIC AREA WITH CONCESSION
SPORTS AREA
LAND BRIDGE

SOUTH SIDE NEW PLAY AREAS
WELCOME PLAZA
ZILKER HILLSIDE THEATER
INTERPRETIVE STORYLINE

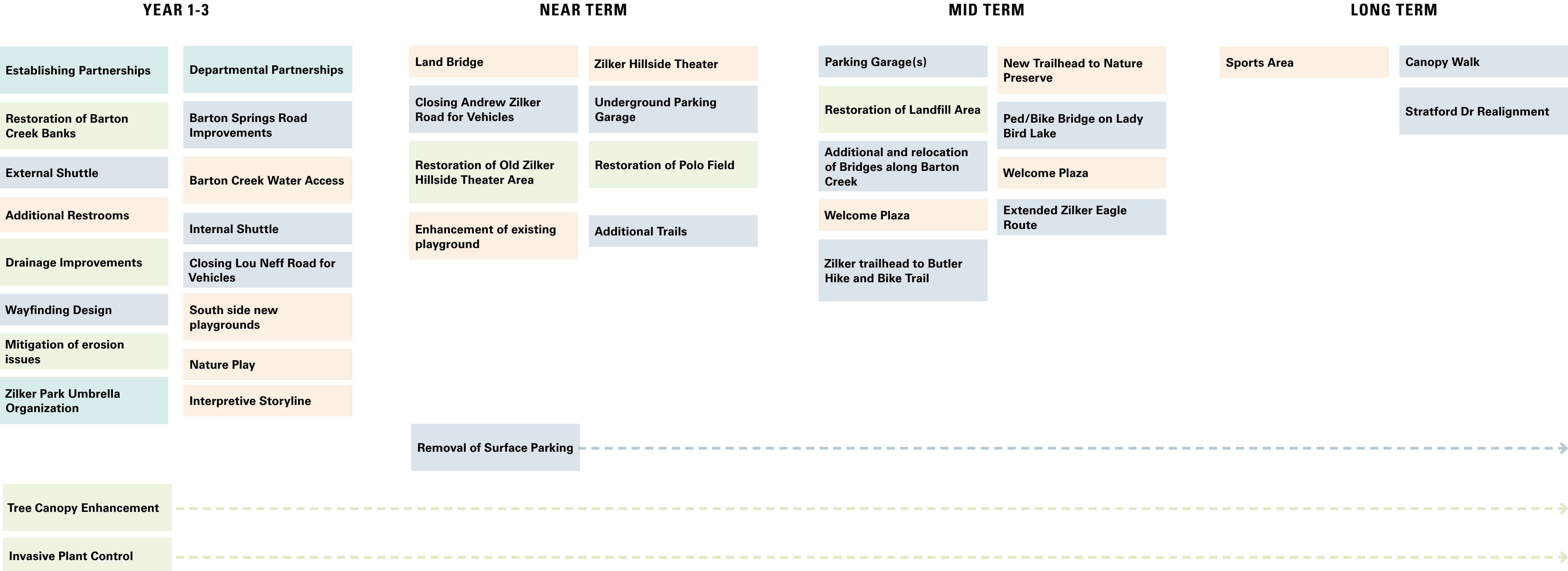
# IMPLEMENTATION

## COST AND BENEFIT RELATION



# IMPLEMENTATION

## PROJECT TIMELINE



# CONCLUSION AND NEXT STEPS

## IMPACT OF THE VISION PLAN

- 1 Balancing Competing Interests
- 2 Urbanizing Recreation Within a Historic Context
- 3 Ensuring Equity, Diversity and Inclusivity
- 4 Linking Programming, Funding and Maintenance
- 5 Improving Mobility to and Inside the Park
- 6 Protecting the Ecological Heritage of Zilker

### REVIEW AND ADOPTION

- ENVIRONMENTAL COMMISSION
- URBAN TRANSPORTATION COMMISSION
- DESIGN COMMISSION
- PARKS AND RECREATION BOARD
- MOBILITY COMMITTEE
- CITY COUNCIL



# THANK YOU



• **Zilker Metropolitan Park Vision Plan Website**

<https://www.austintexas.gov/ZilkerVision>

• **Contact Information**

Gregory Montes:  
[ZilkerVision@austintexas.gov](mailto:ZilkerVision@austintexas.gov)



**DESIGNWORKSHOP**