

WELCOME

Dougherty Arts Center Redevelopment Open House





The mission of the Dougherty Arts Center (DAC) is to support emerging through established artists who create, showcase, and experience the arts first hand. We envision the DAC as Austin's cultural living room where people of all ages, races, ethnicities, abilities, genders, sexual orientations, socio-economic statuses, nationalities, and religions gather to create community through the arts.



1947 The building at 1100 Barton Springs Road is built as the Navy and Marine Reserve Building

1978 The building is purchased by the Dougherty family and donated to the City of Austin as the Dougherty Arts Center

1984 1984 Town Lake Park Comprehensive Plan envisions Butler Shores site as cultural park

2008 A study prepared for the EPA confirms that the building sits on a former landfill

2009-2010 Building assessment completed with 2006 bond funding determines the building is beyond useful life

2010-2011 Five stakeholder focus groups are conducted to review study results and envision program requirements for a new DAC

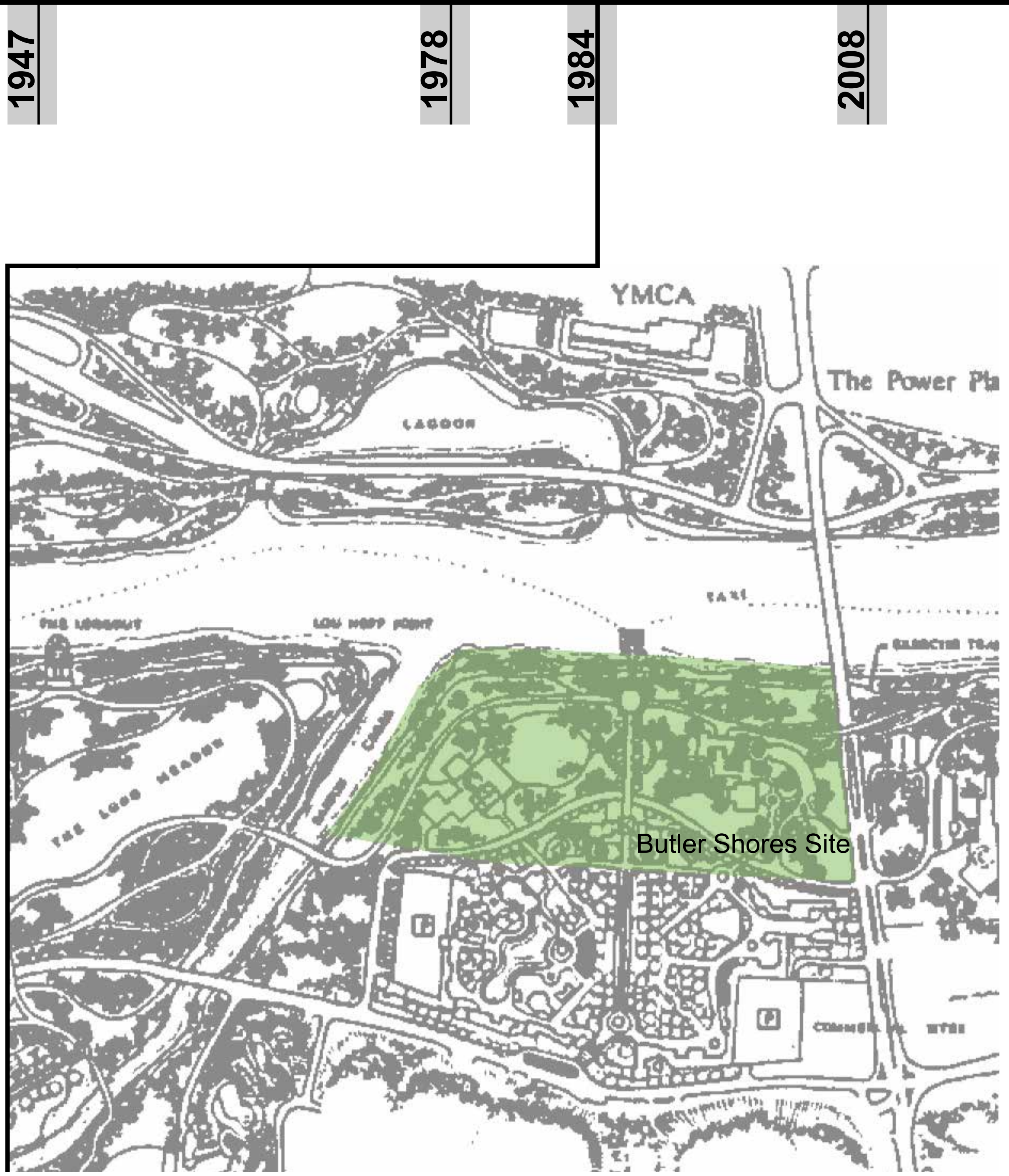
2012 Friends of the DAC is resurrected to advocate for a new DAC

2013 Site registered with TCEQ as former landfill

2014 Architectural Feasibility Study completed by Architecture Plus determines that floodplain issues prevent rebuilding on current site

2017 RVI and Studio 8 undertake feasibility study for Butler Shores site

2017-2018 Bond Election Advisory Task Force proposes \$25 million for replacement of the DAC



Town Lake Comprehensive Plan (1984)

2009-2010

2010-2011

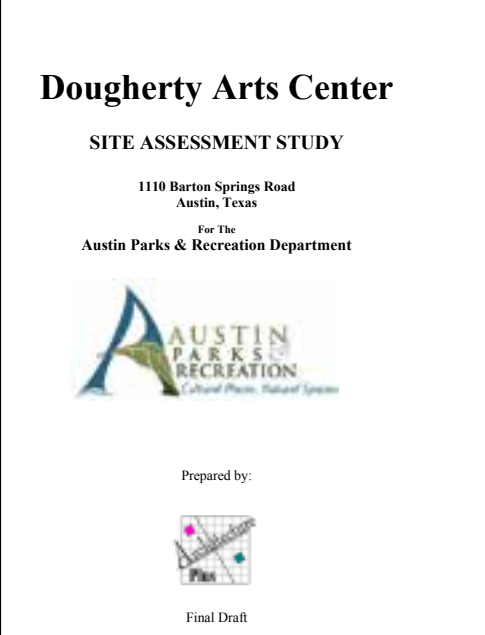
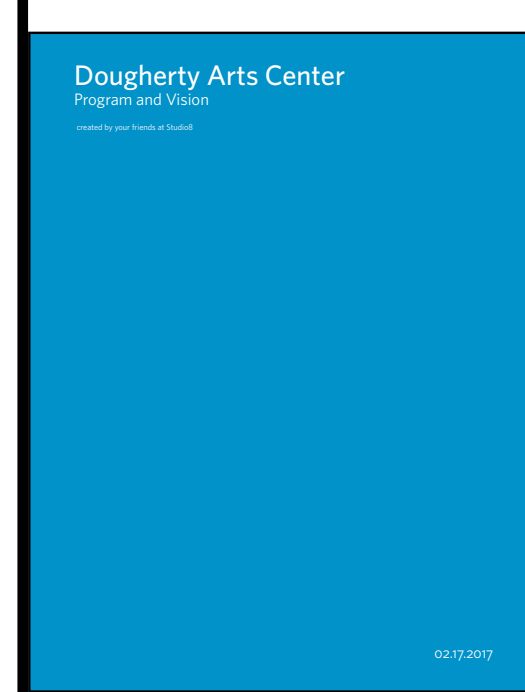
2012

2013

2014

2017

2017-2018



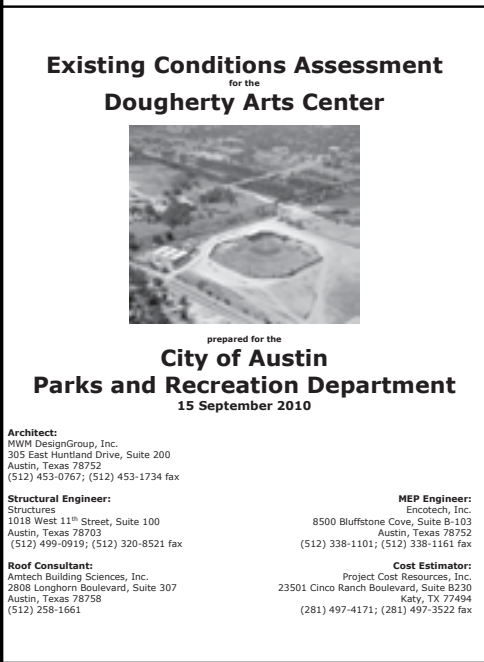
"Comfortable and homey like your favorite house shoes."

"The very human scale of the place. It is not corporate."

"The building is literally and figuratively alive."

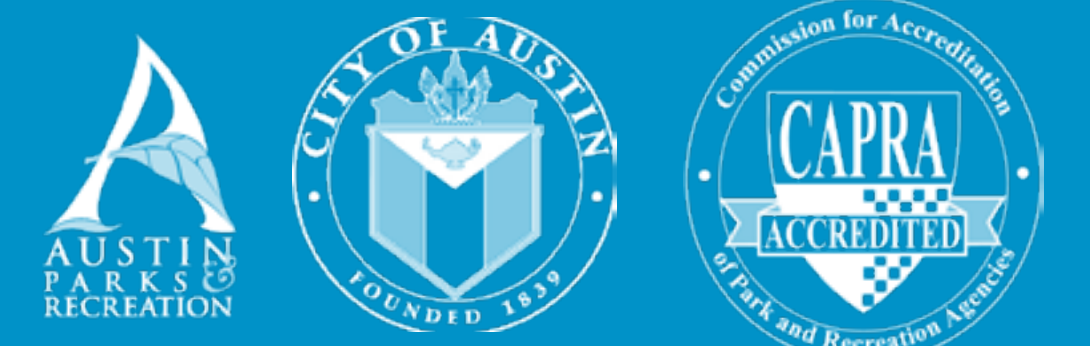
100% of respondents said natural light is important to the character of the DAC.

100% of respondents said a connection to nature is important.



"The particular regulatory constraints associated with the existing building and its site render concurrent compliance with the City's objectives fundamentally infeasible."

How We Got Here



What We Heard: June 21, 2018 Open House

The DAC community survey was available from June 21, 2018 to July 25, 2018. We received a total of 616 survey responses, 4 of which were in Spanish.

What do you like about the current DAC facility?

- Location/accessibility/proximity to parkland
- Affordable, diverse programs
- History and character
- Size, scale, warmth, and natural light
- Staff and artist spaces within the building

Buzz Words: cozy, informal, low-tech, authentic, unpretentious, neighborly, old-Austin

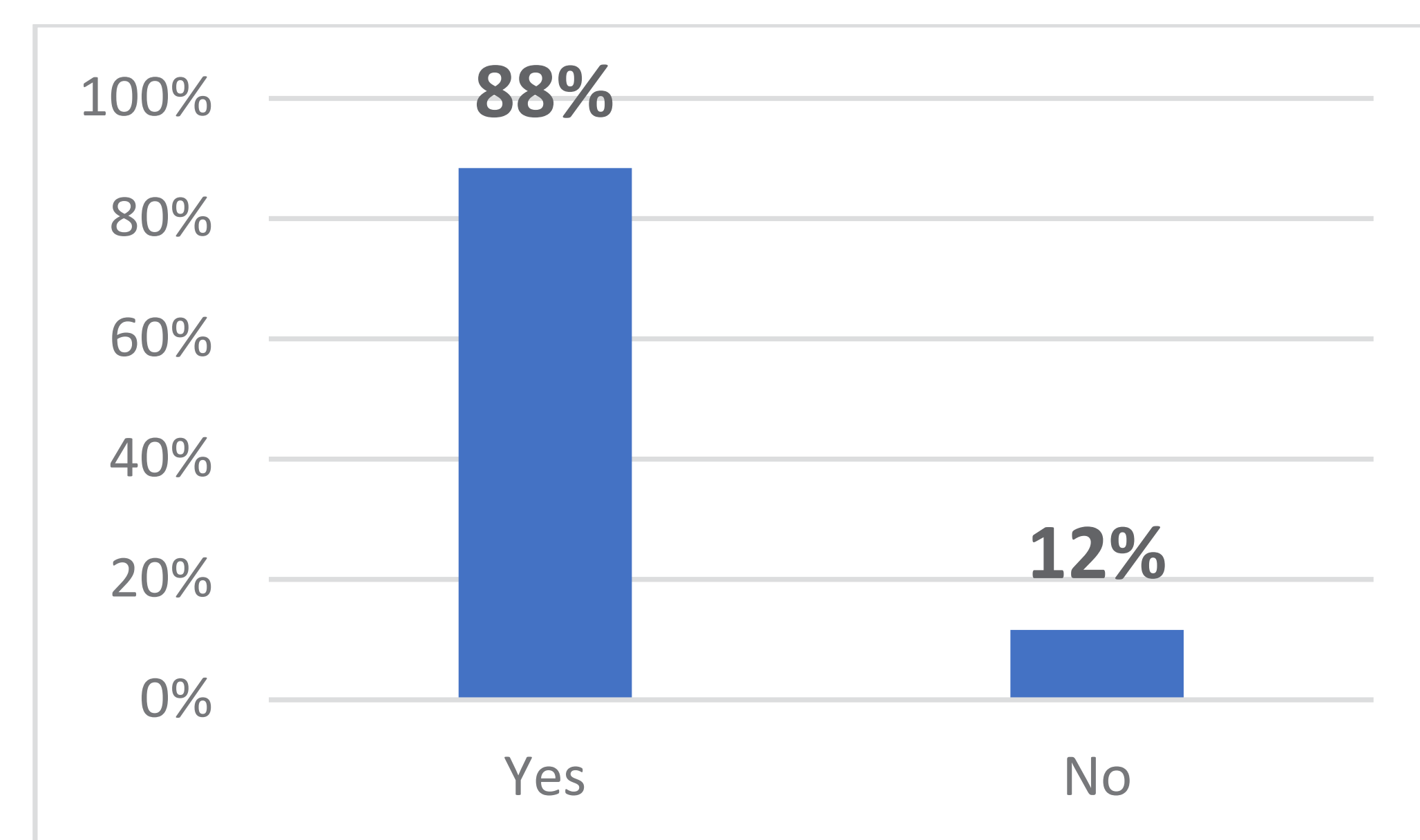
How do you think the DAC can improve its facility?

- Expand the space to offer more programming
- Allow for more gallery space
- Upgrade the equipment
- Provide better/more parking
- Offer a better outdoor space for children

Buzz Words: modernize, climate control improvement, larger space, upgrade

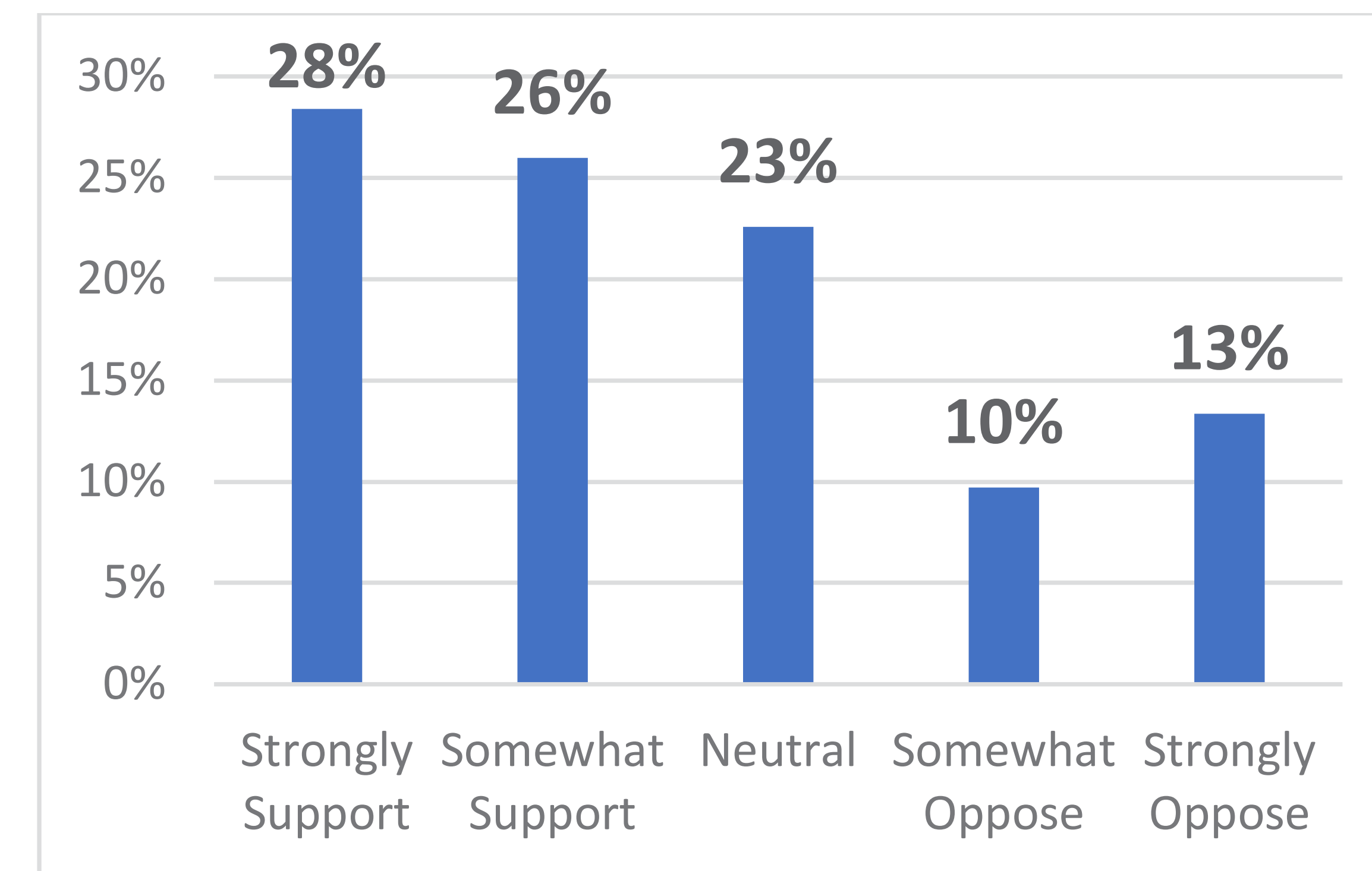
Is the existing DAC conveniently located for you (central Austin, south of Lady Bird Lake)?

88% of respondents believe the existing DAC is conveniently located.



Are you supportive of relocating the DAC to the Butler Shores site?

54% of respondents are supportive of the relocation, 23% oppose, and 23% are neutral to the relocation.



What do you see as an advantage/opportunity for relocating the DAC at the Butler Shores location? (Check all that apply)

The top three advantages/opportunities that respondents identified were:

- The potential for partnering with other arts facilities like the ZACH Theater
- Central and accessible location
- It supports the emergence of a cultural arts district along the South Central waterfront

Other responses included:

- “Better parking. Opportunity to grow the facility to the demand.”
- “Moving it would be costly plus take up much needed parkland.”
- “Enhances opportunities for outside play during childcare programming.”
- “There are no advantages to building on parkland and adding traffic to an area that is beyond capacity in traffic.”

What We Heard: June 21, 2018 Open House

The DAC community survey was available from June 21, 2018 to July 25, 2018. We received a total of 616 survey responses, 4 of which were in Spanish.

What is your primary concern about relocating the DAC on the Butler Shores site:

50% of respondents were primarily concerned with parking and traffic.

Other themes included:

- Potential for increased congestion on Toomey Road
- Cost of relocating the DAC
- Rising costs of venue rental/classes and programs to offset construction costs
- Returning the current site to parkland

What do you think are the most critical needs Austin artists have in regards to space and resources?

Key themes included:

- Affordable spaces
- More artist studio spaces
- Availability of classes

Responses included:

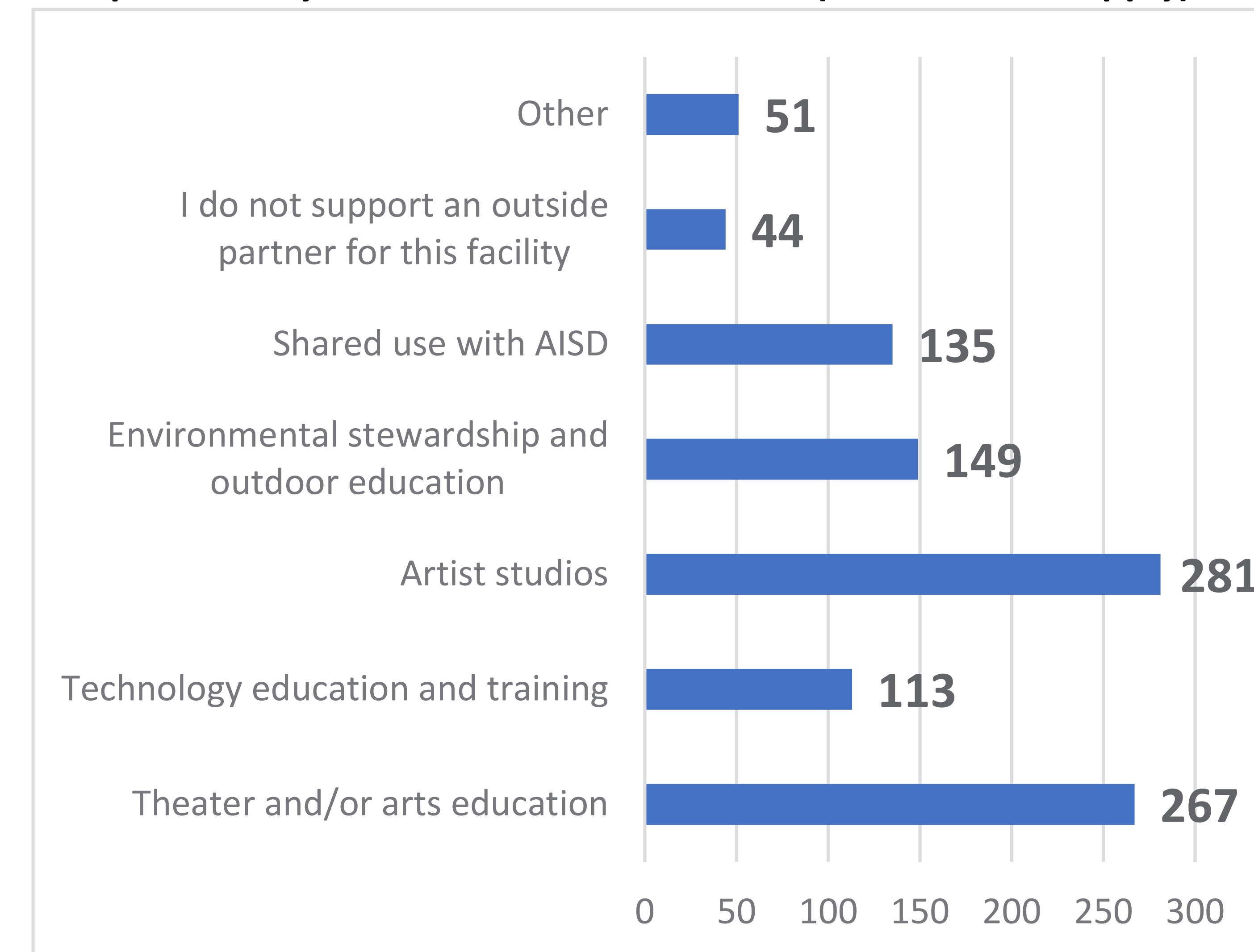
- “Spaces too small and need repairs.”
- “DAC met my needs as far as space and resources.”

How should the DAC address these critical needs?

Themes included:

- Provide more exhibition/gallery spaces for artists to showcase their work to increase community participation and help emerging artists
- Building a new facility to increase space
- Provide affordable studio space

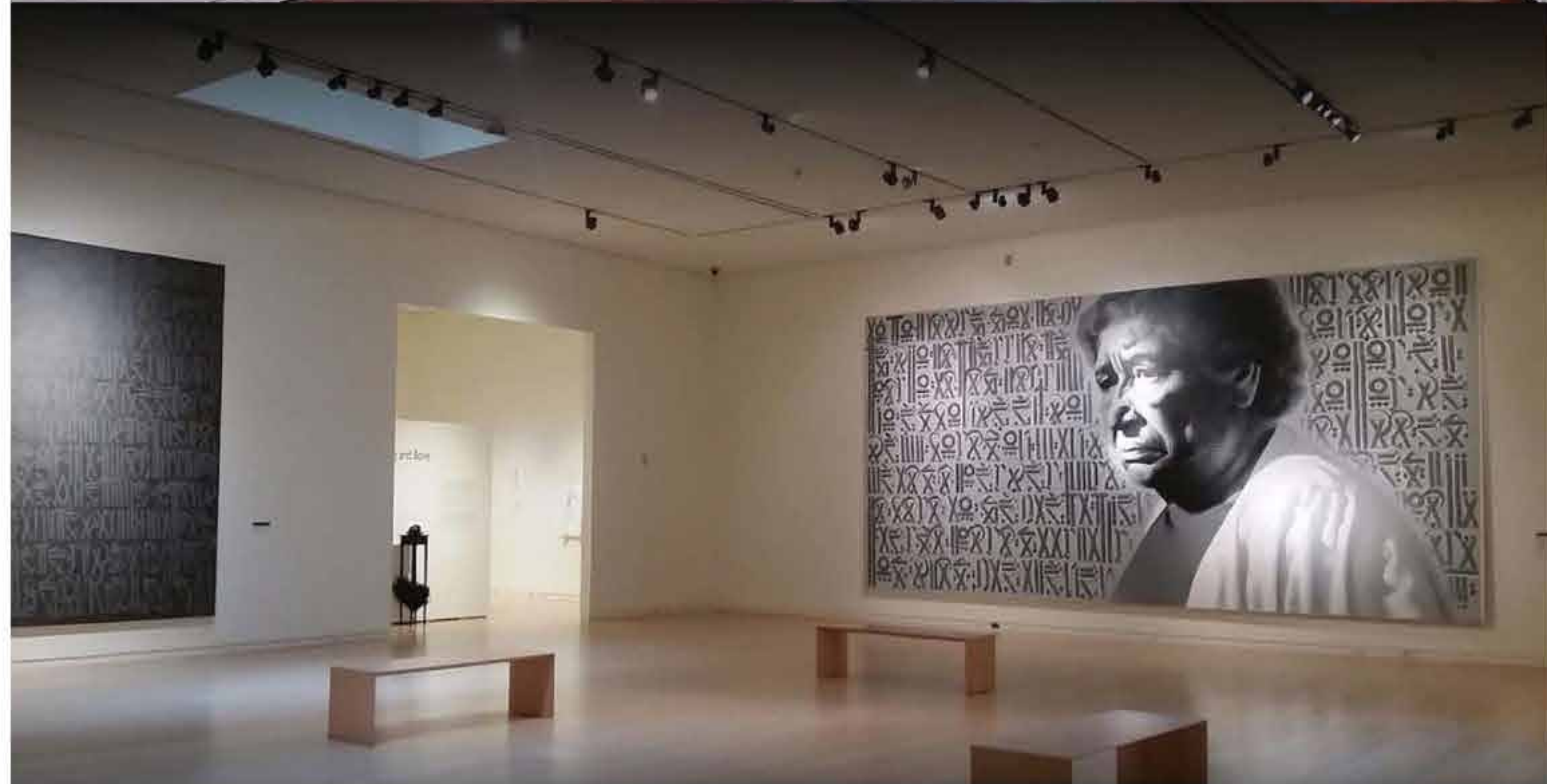
If you support the idea of a partnering agency who might share space in the new facility, what types of partnership missions would you see as beneficial and complementary to the mission of the DAC? (Check all that apply)



Other responses included:

- “Access for lower-income residents.”
- “Art programs for people with disabilities.”
- “My concern is only that a partnership could create higher rental fees.”

View the full community survey results on our website: www.austintexas.gov/DACProject

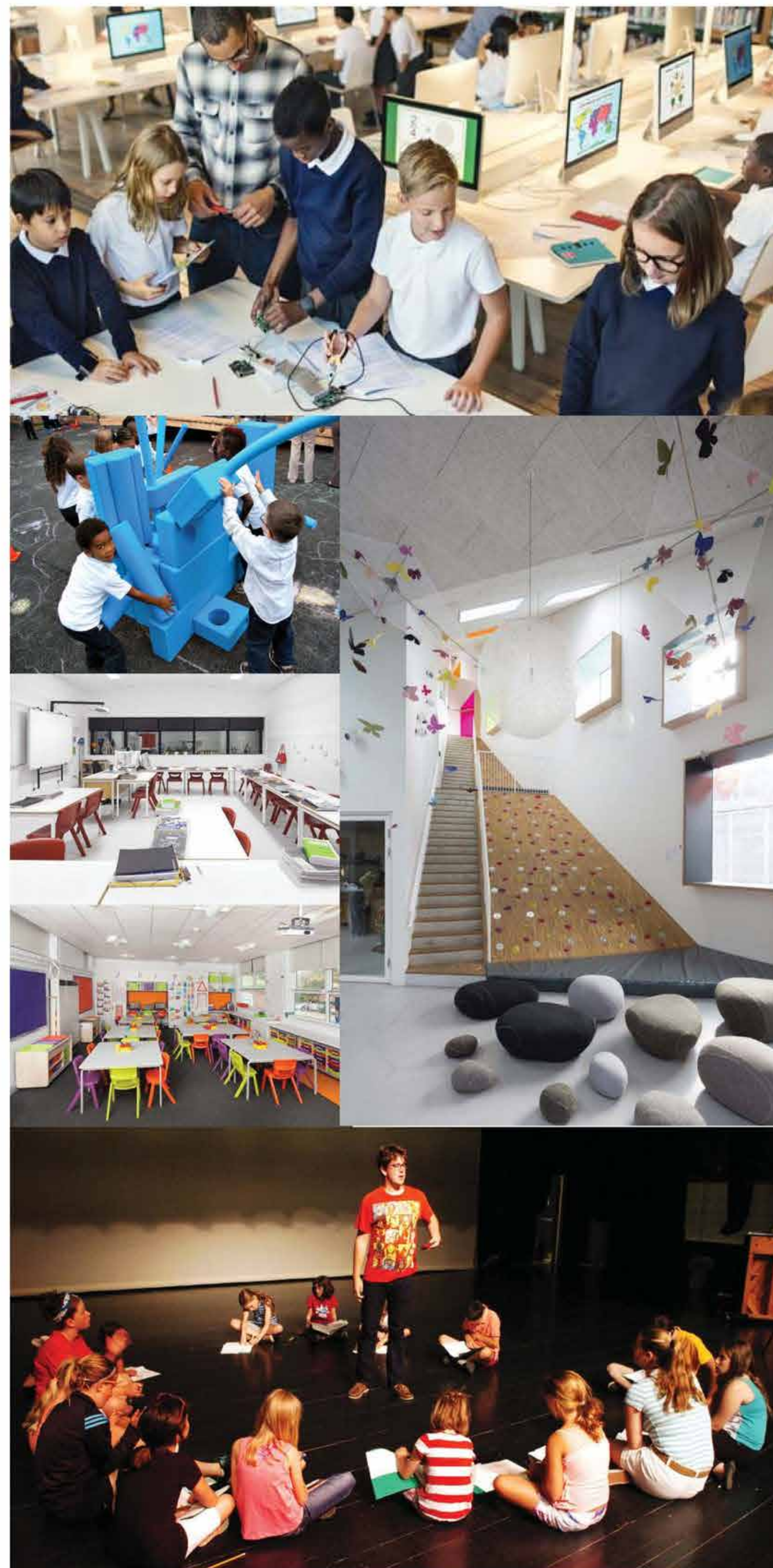






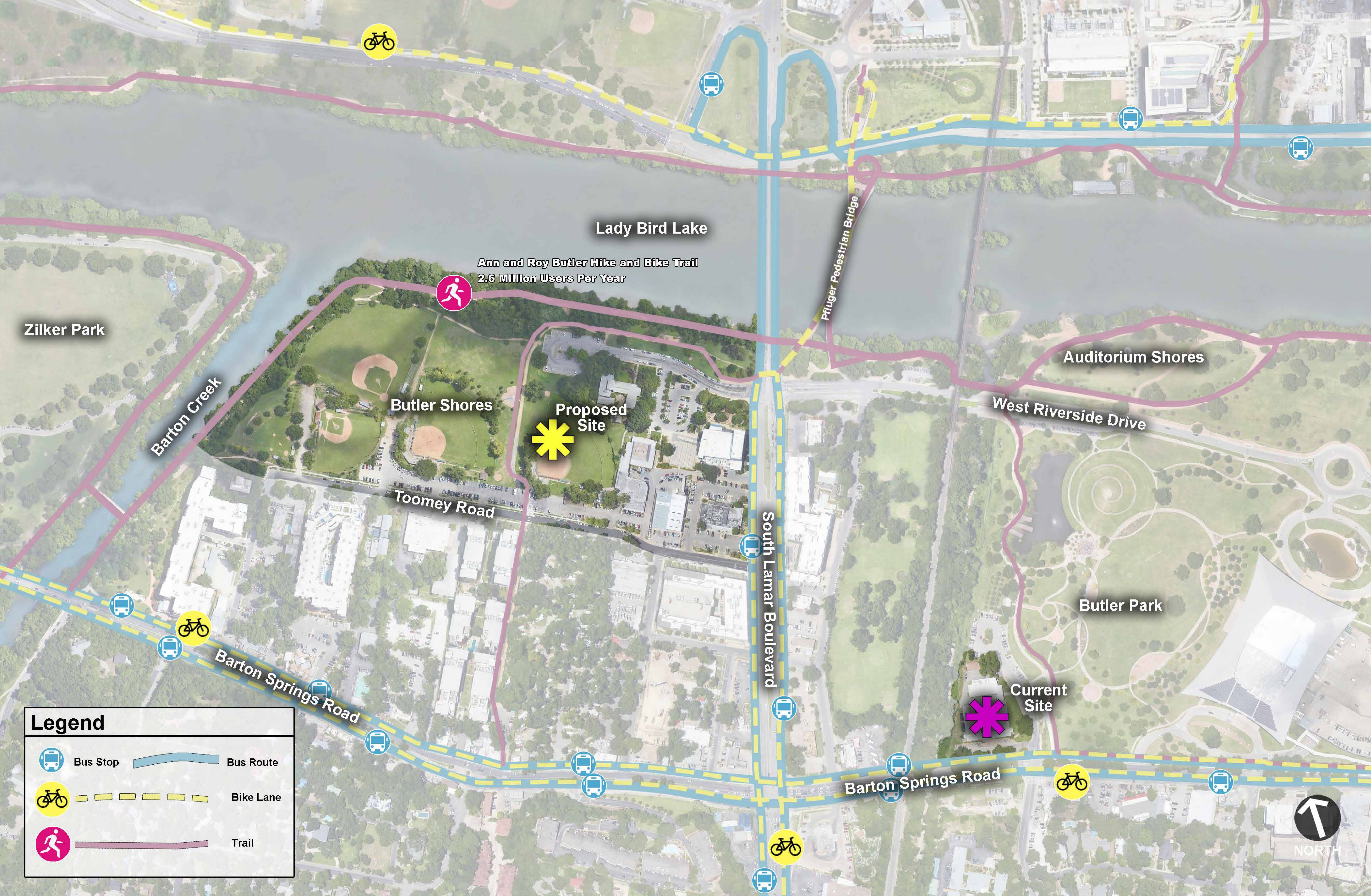
Theater & Lobby Space






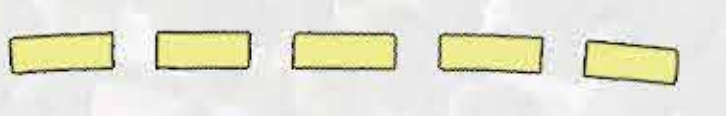






Adult School & Studio Spaces



Legend

	Bus Stop		Bus Route
			Bike Lane
			Trail

Context Map

What's Working?

- Centrally located
- Students enjoy the warmth and character of the building
- Staff is genuinely interested and invested in facilitating a good experience for each student
- The vitality and opportunity the center provides to the Austin arts community



What's Not Working?

- The facility is “surviving not thriving”
- Aging facility requires increasing maintenance and repair costs
- Facility lacks flexibility
- Too small, with limited storage and support spaces
- Outdated and inefficient building systems
- Lack of parking
- Inadequate outdoor play areas



Why Can't the Current Site be Redeveloped?

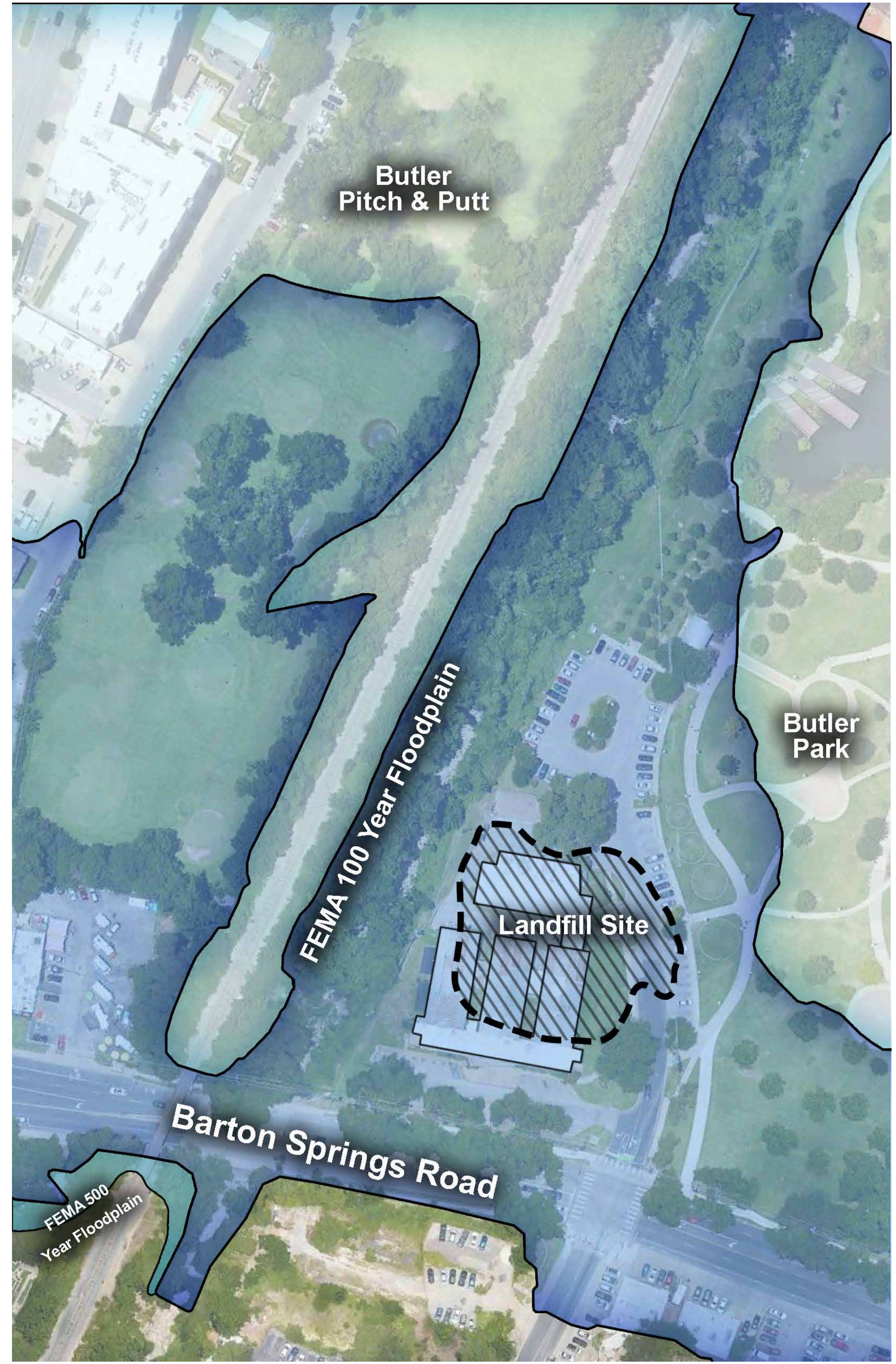
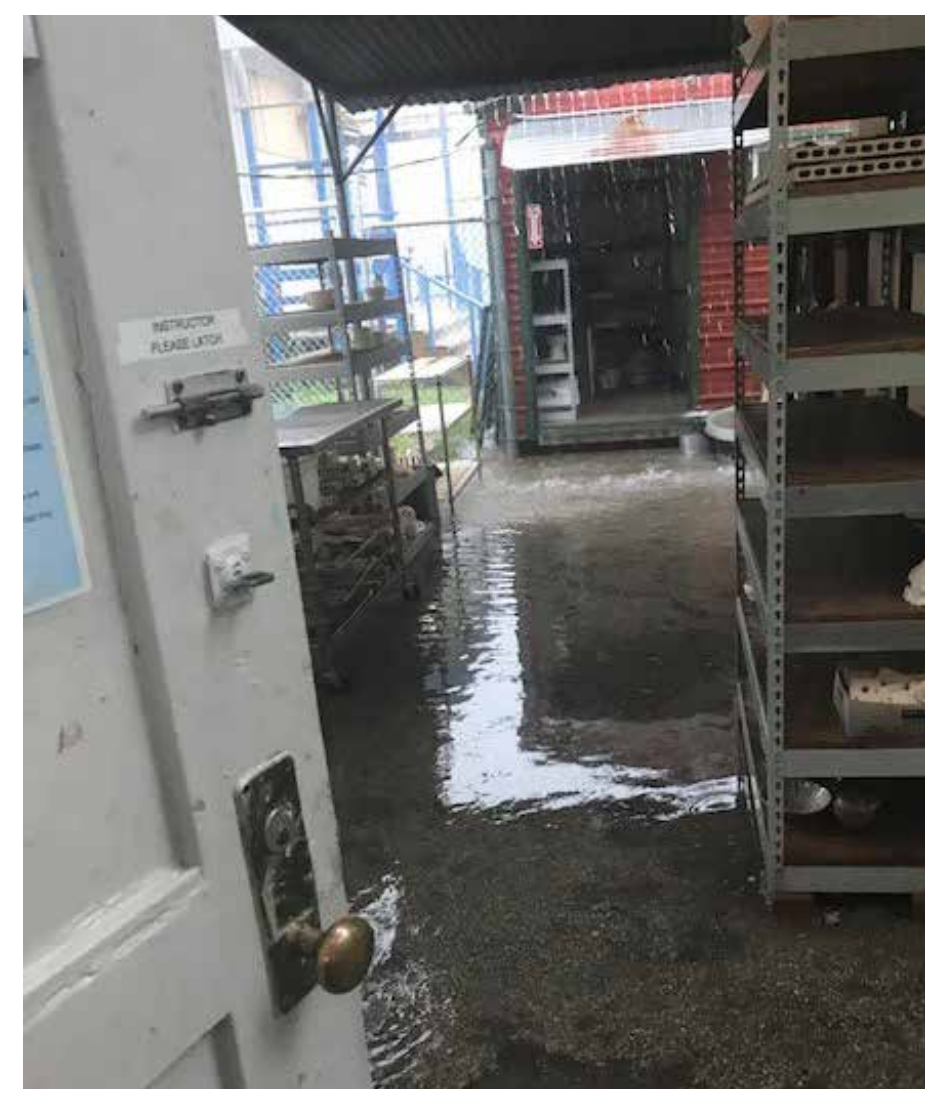
- Facility was built over a landfill
- Building sits within FEMA floodplain
- Property floods every year
- Emergency access and accessibility is limited in floodplain
- Future floodplain limits will be stricter
- Current building site is approx. 6' below 100 year floodplain
- New structures must be 2' above floodplain level
- Any new structure in the floodplain would negatively impact area drainage
- Rebuilding on current site would require a multi-year closure of the DAC



Proposed 100 Year Floodplain @ approx. 454' MSL

Existing 100 Year Floodplain - Proposed 25 year Floodplain @ approx. 452' MSL

Existing DAC Level 1 @ approx. 449' MSL



VISION

- Public gathering areas (inside and outside) that foster a sense of community for Austinites of all ages
- Spaces that inspire creativity; a feeling that this is a place to make things
- Gallery Space that meets the requirements of the Smithsonian Institution
- Rehearsal Rooms that can be reserved by students, faculty or the public
- New technology options for students and faculty
- Spaces that are flexible enough to serve multiple needs, yet able to accommodate their specific function well
- Rentable public space (similar to other PARD facilities)
- Facility that embraces the history and emotion of the DAC
- Top Words to describe the New DAC Facility:
Flexible, Adaptable, Authentic, Polished, Surprising, Inviting, Accessible, Cutting Edge, light, Functional, Industrial, Human Scale, Comfortable, and Beautiful

PROGRAM SPACES

SCHOOL & PRE-SCHOOL

- Arts Classrooms
- Digital Technology Lab
- Commons/Gathering Space
- Teacher Areas
- Storage and Support Spaces

STUDIO SPACES

- Multi-discipline Studio Spaces
- Outdoor Studios
- Artists Resource Center
- Artist in Residence areas
- Storage and Support Spaces

GALLERY

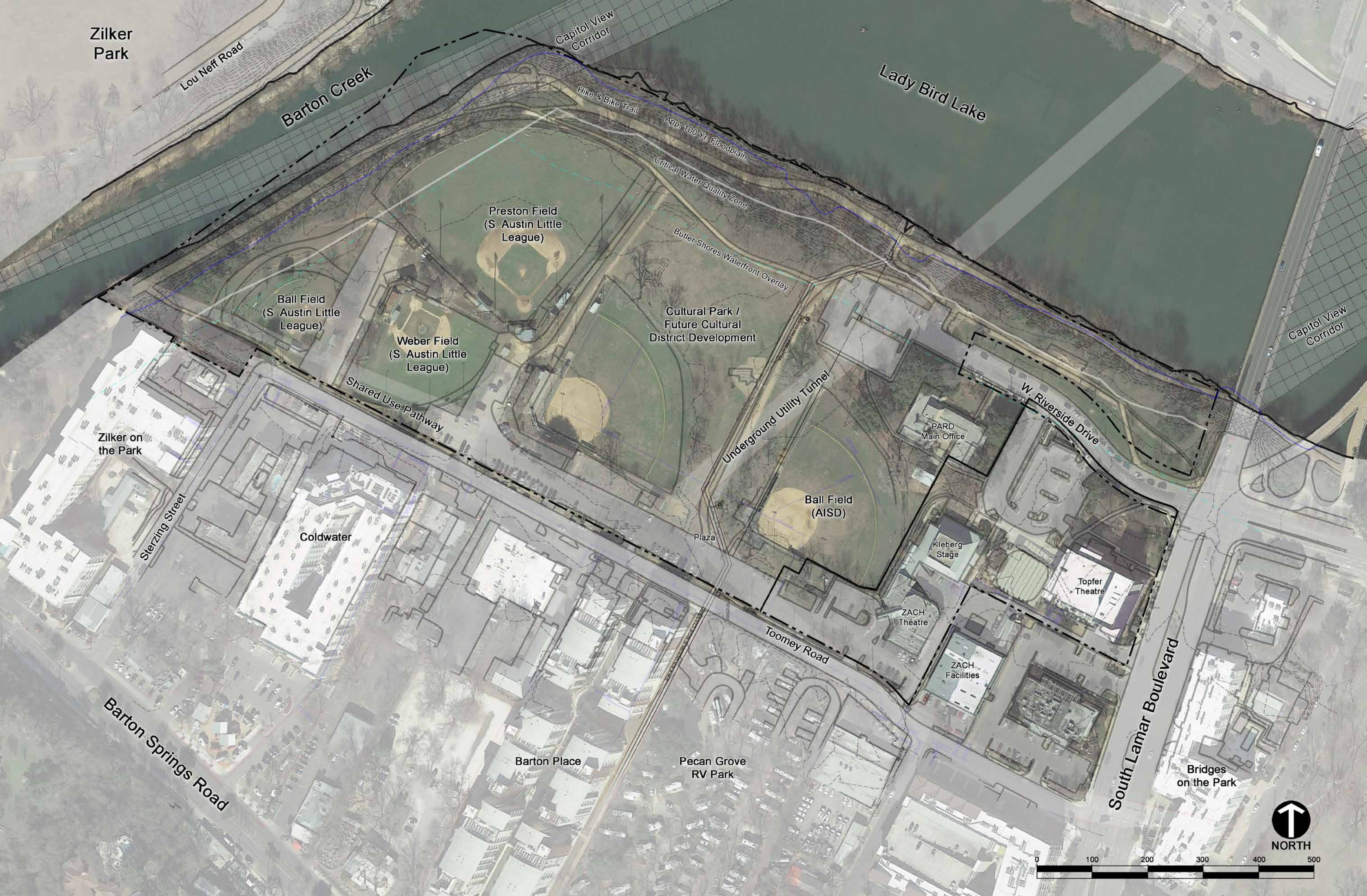
- Public Gallery (Smithsonian Inst. Std.)
- Outdoor Gallery
- Storage and Support Spaces

PUBLIC SPACES

- Entry and Cafe
- Outdoor Gathering

THEATER

- Public Gallery
- Proscenium Theater
- Black Box Theater
- Rehearsal Spaces
- Storage and Support Spaces



NORTH



Butler Shores Existing Conditions



You Are Shaping the Future of the DAC

Your participation in the open house has contributed significant improvements to the conceptual layout. These improvements include:

- Removed vehicular drive in favor of pedestrian connection to adjacent green space.
- Strengthened trail connection across the site to connect to the Hike and Bike Trail.
- Enhanced concepts for Cultural Park and reconfigured circulation routes to preserve more existing trees.
- Redesigned Toomey pedestrian plaza to accommodate attractive, green streetscape.



“Internal Circulation Drive” would exacerbate traffic problems on Toomey Rd.”

“Zilker/Butler trails are becoming less accessible/“further away” as Austin grows.”

“The traffic circulation schematic shown at the open house seems to invite cut-through traffic from Lamar to Toomey Road. This would be a VERY BAD THING.”

“Don't take away from natural green spaces and dog park.”

“This will cause additional congestion on Toomey.”



Zilker Park

Low Neff Road

Lady Bird Lake

Barton Creek

Butler Hike & Bike Trail

Gateway Trailhead

Bioretention
- Boardwalk
- Environmental Education

Art and Nature Play Space
- Shaded by Existing Trees
- Swings
- Benches

Gathering and Performance Space
- Neighborhood Back Patio
- Nestle in Existing Trees
- Outdoor Classrooms

DAC Outdoor Play
- Secure Play Space
- Art Wall
- After School and Pre-School Age

Restroom with Overlook
Possible Design Competition -

Focal Pavilion

The Meadow
Green Lawn -
Art Shows -
Open Play -

Shaded Trail
Space for Vendors -

Existing Baseball Fields
(South Austin Little League)

Conection to
Butler Trail

Zilker on
the Park

Sterzing Street

Coldwater

Sculpture Focal Point

Art Walk
Wide, Varied Pedestrian Pathway -
Public Art -
Fire Lane -

Community Living Room
Shaded Entry Plaza -
Tables and Chairs -
Interactive, Rotating Art -

Connection to Existing Trail

Barton Place

Pecan Grove
RV Park

Blackbox
Theater Opens
to Outdoors

Dougherty
Arts
Center

Dropoff
for School

PARC
Main Office

Parking
Structure

Drop off for
Theater

Kleberg
Stage

ZACH
Theatre

ZACH
Facilities

Topfer
Theatre

W. Riverside Drive

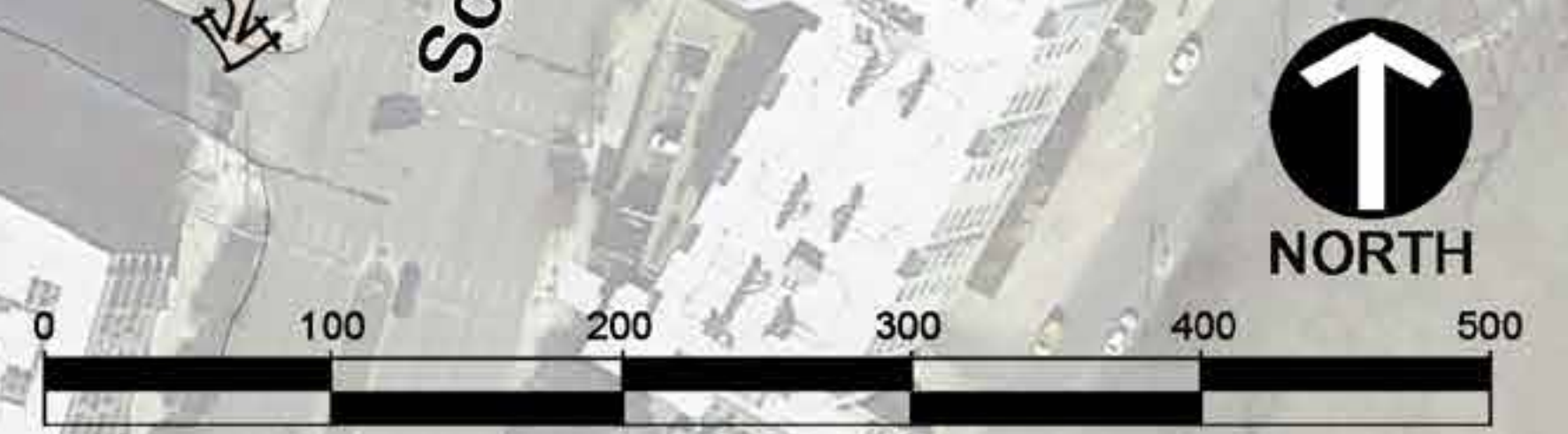
Outdoor Studio Space
Service Drive/Back of House

South Lamar Boulevard

Bridges
on the Park

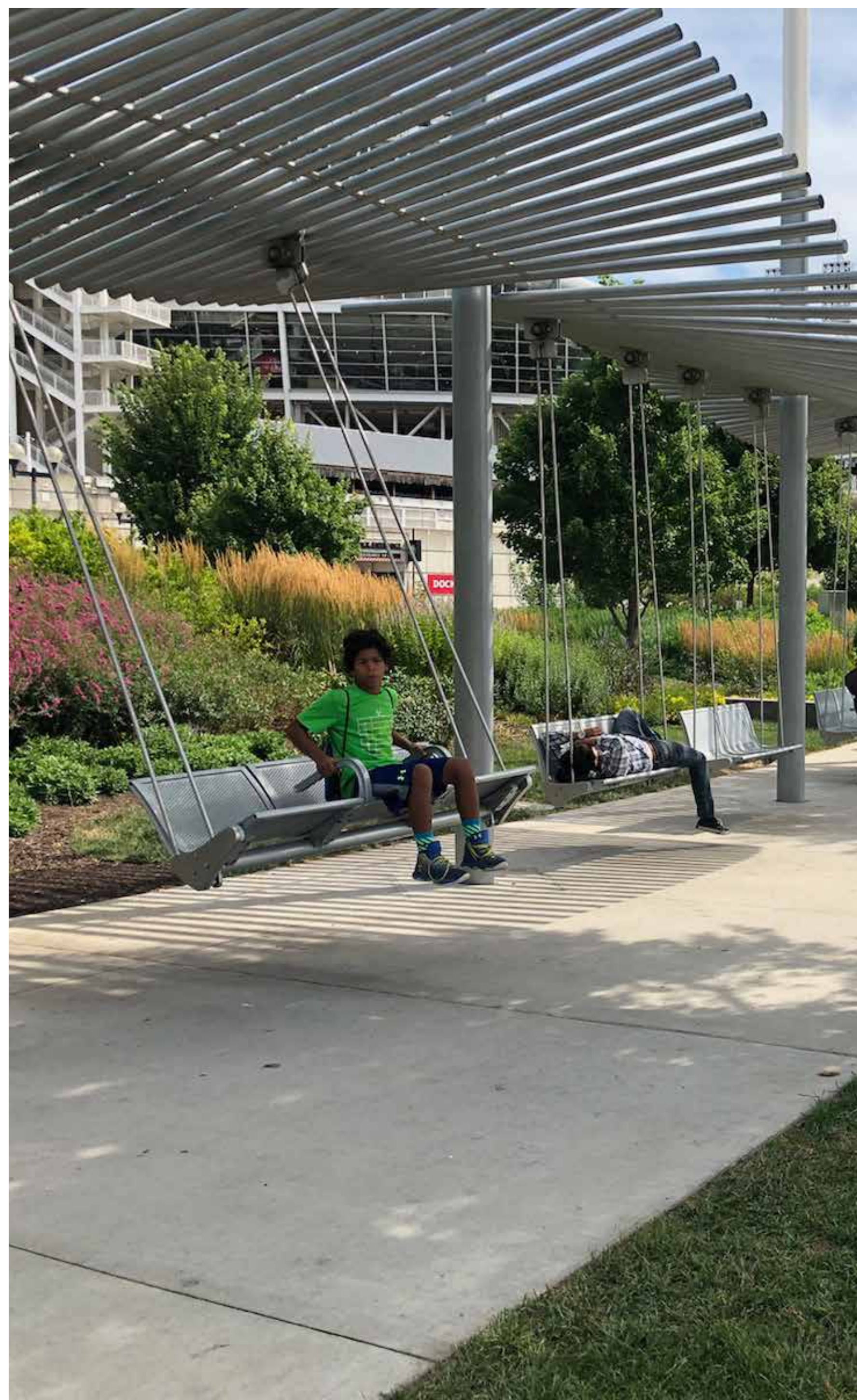
Potential Development Scenario

- Building Facility
 - Approximately 40,000 sf
 - 2-3 Story Structure
- Parking Structure
 - 2 Levels with approximately 200 spaces
- Separated Theater & School Drop-Off Areas
- Outdoor Courtyard Spaces
- Integrated Cultural Park & Trailhead
- Connection to Town Lake Trail





Cultural Park Elements



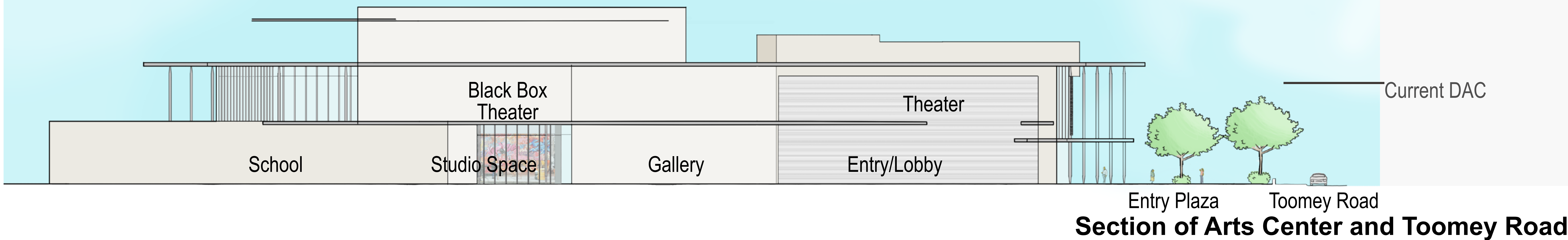
Cultural Park Elements

Building Heights

Barton Place Condos

Cole Apartments

Current DAC



Section of Arts Center and Toomey Road



View from Toomey

Next Steps:

- Review all latest feedback and finalize preliminary design phase
- Prepare presentations for City Boards, Commissions, and Council this fall and winter
- Await the results of the 2018 Bond election in November

Stay Informed and Involved:

- For questions and comments, please send an email to DACProject@austintexas.gov.
- Stay in touch with progress at the project website: www.austintexas.gov/DACProject.