

**Austin-Bergstrom International Airport  
Development Plan**



**City of Austin  
Comprehensive Planning and Transportation Committee  
August 6, 2012**

1


### Presentation Outline

- ABIA Mission
- Aviation Industry Environment and Impact on ABIA
- ABIA Capital Improvement Program
  - East Infill Project
- City Council Actions Timeline and Next Steps

2

### ABIA Mission

Connect Central Texas to the Global Economy



3

### How do we accomplish the mission

1. Market Central Texas to airlines to secure destinations, capacity and competition
2. Build operate and maintain infrastructure required for airlines to successfully execute their business models

4

### ABIA Economic Impact Central Texas

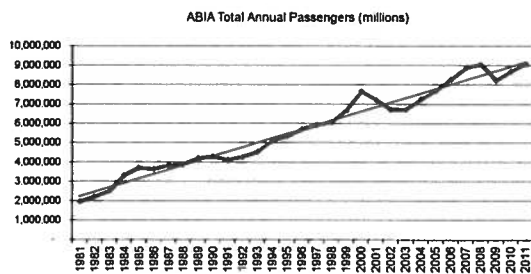
- 41,000 Jobs
- \$1.2 Billion Payroll
- \$2.5 Billion economic activity

Source: TXDOT 2011

### Where We Are Today

- ABIA currently ranks as the 42<sup>nd</sup> busiest airport in North America
- ABIA Served **9,080,875** passengers in 2011
  - 60% Leisure 40% business and
  - 7% international (includes hub connections)
- 39 nonstop destinations

### Where have we been 3.7% Average Annual Growth



### Where are we going

- Master Plan and FAA Forecast 2.8% growth
  - 10 Million Annual Passengers **2014**
  - 11 Million Annual Passengers **2018**
  - 12 Million Annual Passengers **2021**
  - 13+ Million Annual Passengers **2024**

### Dynamic Industry Environment

- Airline Business Models
- Security Requirements
- New Technologies (airport, airline, airspace)

9

### Airline Mergers / Acquisitions Since 1999

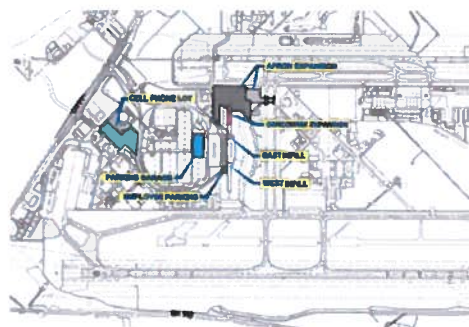
- 2002 American & Trans World (TWA)
- 2005 US Airways & American West
- 2009 Delta & Northwest
- 2010 United & Continental
- 2010 Frontier & Midwest/Republic Airline
- 2011 Southwest & Air Tran
- 2012 American & unknown ???

10

### 2008 Capital Improvement Program



### Airport Capital Improvement Program



### East Infill Project Location



13

### East Infill Google Earth View



14

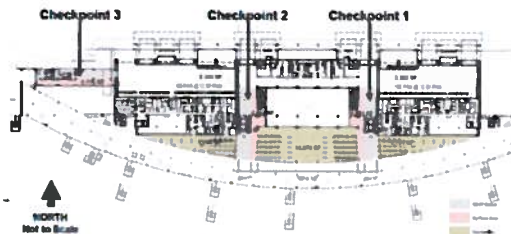
### East Infill Project Scope

Terminal Original Design Capacity - 11 Million Annual Passengers

- Add a new Security Checkpoint 8+ lanes
- Add two new inbound baggage carousels in existing terminal baggage area
- Add two new outbound baggage carousels in existing apron baggage make-up areas
- Concession support space
- Reconfigure Loading Dock Area
- Add a new service elevator
- Add oversized bag belt (ticket counter to apron level)
- Explosive Detection System (EDS) expansion
- Expand Federal Inspection Services Capacity (customs)

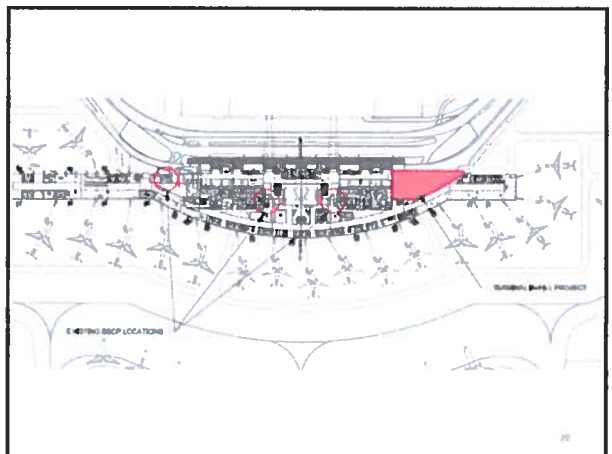
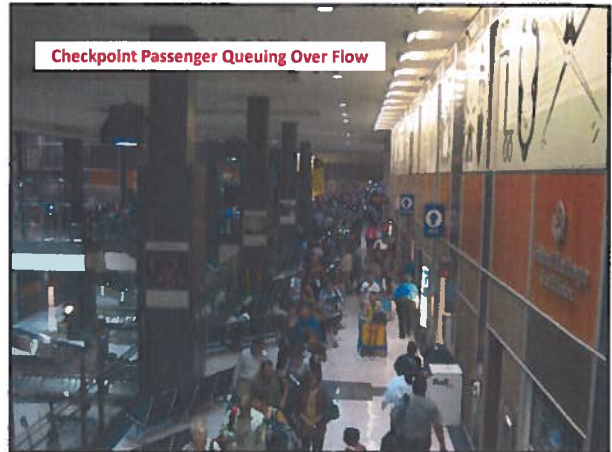
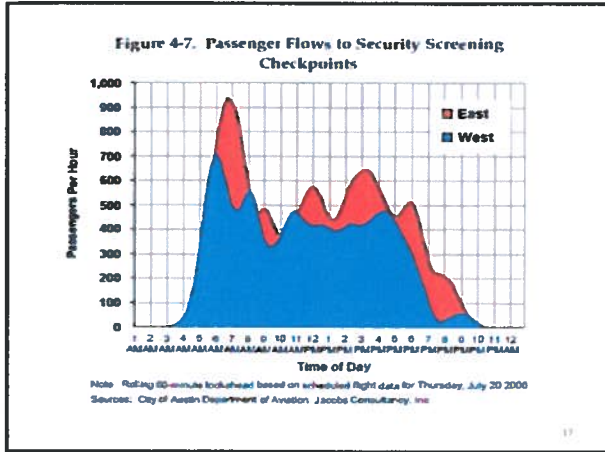
15

Figure 4-8. Existing Security Screening Checkpoint Locations



Note: Checkpoint 3 has been reconfigured to provide 3 screening lanes, eliminating the bypass area.  
Source: City of Austin Department of Aviation, Jacobs Consultancy, Inc.

16



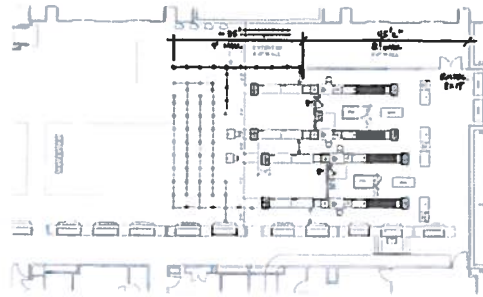
### Long Term Checkpoint Concept



21

### Temporary TSA Checkpoint #4

November 2012



22

### New Baggage Carousels

2-Inbound baggage claim  
2-Outbound apron level



Inbound Carousel

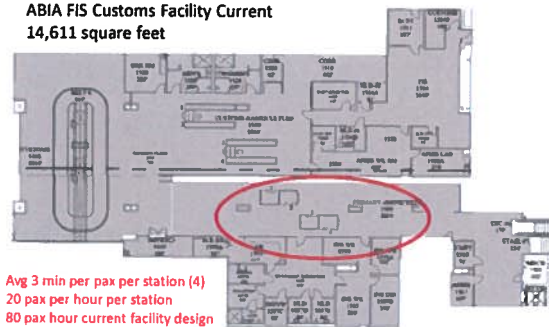


Outbound Carousel

23

### Customs Facility Expansion

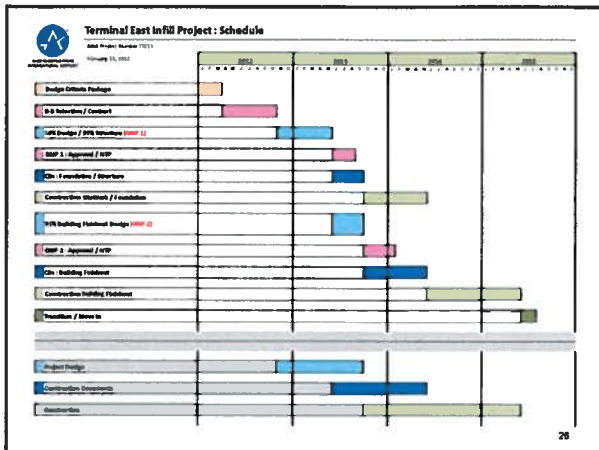
ABIA FIS Customs Facility Current  
14,611 square feet



Avg 3 min per pax per station (4)  
20 pax per hour per station  
80 pax hour current facility design

24

### Customs Wait Line For Primary Inspection



### Estimate Project Cost Summary

Description	Project Cost
East Infill Estimated Budget	\$40,000,000 +/-
Level 1	\$5,000,000
Level 2	\$5,300,000
Level 3	\$10,500,000
Level 4	\$4,000,000
COA (Public Works Contract Management)	\$1,000,000
Design Build Consultant/Contractor	\$5,000,000
AIPP	\$475,000
Contingency (25% of Total)	\$7,500,000
City is Seeking Grant Opportunities with TSA and FAA	

### City Council Action Schedule

- RCA Authorization for Design/Build delivery was approved December 2011
- Award Design/Build Team RCA October 2012
- RCA GMP #1 May 2013
- RCA GMP #2 Oct-Nov 2013