

Stages and Drought Stage Triggers

Residential

STAGE 2 WATER RESTRICTIONS

Hose-end Sprinklers

Odd Address: Saturday
Even Address: Sunday
Before 10 am **or**
After 7 pm



Automatic Irrigation

Odd Address: Wednesday
Even Address: Thursday
Before 5 am **or**
After 7 pm



Currently In Effect

- Outdoor water limited to one day per week, see chart for your day.
- No washing of automobiles or other mobile equipment or vehicles
- except at a vehicle washing facility. Charity car washes are prohibited.
- No operation of ornamental fountains with an aerial spray of water or water fall more than four inches, other than for aeration necessary to preserve habitat for aquatic life.
- Patio misters at commercial facilities can only be operated between 4 pm and midnight.

Residential

STAGE 3 WATER RESTRICTIONS

Hose-end Sprinklers

Odd Address: Saturday
Even Address: Sunday
7 am - 10 am **or**
7 pm - 10 pm



Automatic Irrigation

Odd Address: Wednesday
Even Address: Thursday
12 am - 6 am



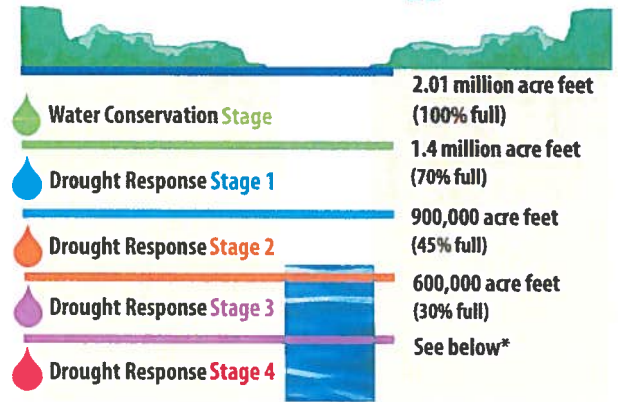
Triggered When The Lake Storage Levels Reach 600,000 Acre Feet

- All Stage 2 rules remain in effect with the following changes:
- Outdoor watering still limited to one day per week, but with less time allowed for watering.
- Patio misters at commercial facilities can only be operated between 4 pm and 8 pm.
- Filling hot tubs is prohibited.

Violations and Fines

Austin's Water Conservation Code regulates discretionary water use. Fines for violating the code are now assessed through your utility bill rather than a criminal charge in Municipal Court. Fines increase for repeat offenses and in progressive drought stages. Call 512-974-2199 for more information.

Lake Storage Levels and Drought Stage Triggers



The combined level of Lakes Travis and Buchanan determine Austin's conservation stages.

*Stage 4 - As determined by City Manager, system outage, equipment failure, contamination of water source or other emergencies

Report Water Waste, Report Violations to 311

This includes watering on the wrong day or time, broken, misting or misdirected sprinkler heads, as well as ponding and runoff into the street.

Check WaterWiseAustin.org regularly for the most current water restrictions.



Drinking Water and the Drought

Austin's source for drinking water is the Colorado River, more specifically the Highland Lakes system. Austin currently draws its drinking water from Lake Austin. The water Austin uses is replaced by water flowing through and from our region's supply reservoirs, lakes Buchanan and Travis. These lakes are managed by the Lower Colorado River Authority (LCRA).

Currently, the combined storage in lakes Buchanan and Travis is at one of the lowest points in the history of the lakes. Barring an unpredicted change in the weather, the lakes will likely sink to their lowest point ever by mid October or November. The lowest point ever was 621,221 acre-feet which occurred on September 9, 1952, during the "Drought of Record."

How We Got Here

The Highland Lakes system serves customers who have entered into firm and interruptible water contracts with LCRA for water from both natural flows and stored water from the lakes. Interruptible customers—largely agricultural—can have their supply curtailed or cut off when necessary to ensure supply to firm customers, especially in times of drought.

The drought began in 2008. Under its current Water Management Plan (WMP) LCRA continued large volume releases to interruptible agricultural customers through 2011 — the worst year of water flowing into the lakes since they were built. This WMP has proven to be ineffective in managing the lakes. Stored water releases to agriculture in 2011 totaled 433,251 acre-feet — more than the amount of stored water used by Austin in the last 15 years and almost triple Austin's total annual usage, which includes natural flows and stored water. Not until the lakes were below 850,000 acre-feet in 2012 were most agricultural releases suspended by emergency order.

Austin Water is working to change the LCRA WMP to protect Austin's water supply and change the way the lakes are managed to prevent the low lake storage levels we now face in future droughts.

Anticipating continued drought conditions, Austin Water is also exploring even more options to reduce water demand and augment Austin's water supplies.

What You Can Do

Consider your water use habits and think how you can use less. Visit Austin Water's conservation website for conservation tips, information on programs and incentives, and more information on the drought. Please follow the City's conservation restrictions which were created with extensive public input and approved by City Council.

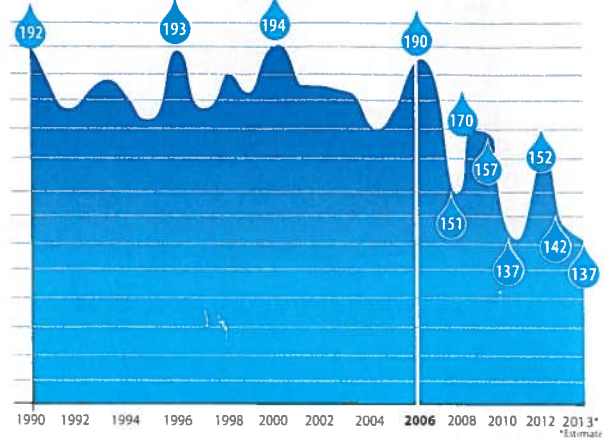
When to Water

The City of Austin has been in Stage 2 watering restrictions for most of the last two years. **Outdoor watering is limited to one day per week** due to combined storage levels in lakes Travis and Buchanan.

What Austin needs to know about the drought

Gallons Per Capita Per Day

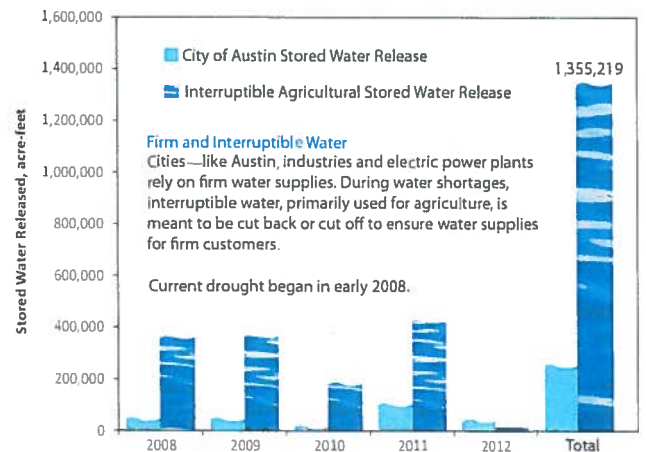
Gallons Per Capita Per Day is down 13% since Fiscal Year 2006



Thank you Austin

Austin has a goal of reaching 140 gallons used per person per day by 2020. The numbers in the water drops above represent gallons per capita per day (GPCD). Implementation of rigorous conservation efforts and strong citizen response have resulted in the GPCD dropping.

Stored Water Released Comparison



Firm and Interruptible Water

Cities—like Austin, industries and electric power plants rely on firm water supplies. During water shortages, interruptible water, primarily used for agriculture, is meant to be cut back or cut off to ensure water supplies for firm customers.

Current drought began in early 2008.

During the current drought, stored water releases for agriculture, "interruptible" customers, have exceeded the stored water releases for Austin by 1,091,756 acre feet. This illustrates how massive releases to agriculture can counteract strong municipal conservation efforts.