

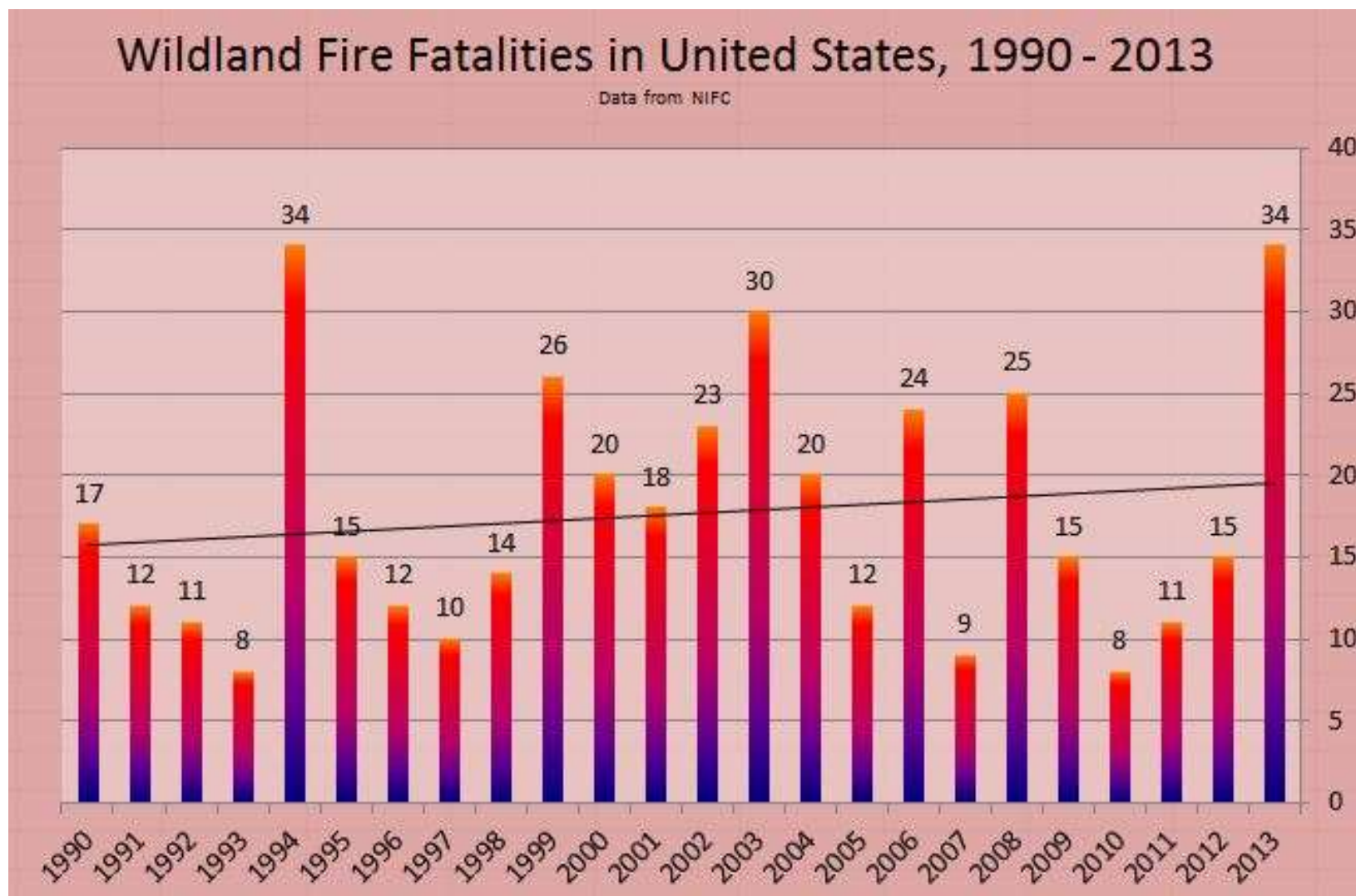
Austin Fire Department

Wildfire Mitigation and our Fire Environment



Vision

Zero Tolerance for Wildfire Fatalities



Austin's Wildfire Threat



Multiple simultaneous starts



Relatively small wildfires



Relatively large losses



More exposures than available resources



Austin Wildfire Strategy

A three pronged approach to wildfire mitigation

- Effective Response to Wildland Fires
- Defendable Communities and Critical Infrastructure
- Strategic Fuels Mitigation in Community Protection Zones





Wildlife
habitat

Water and
Watersheds

Green
Infrastructure

Economy

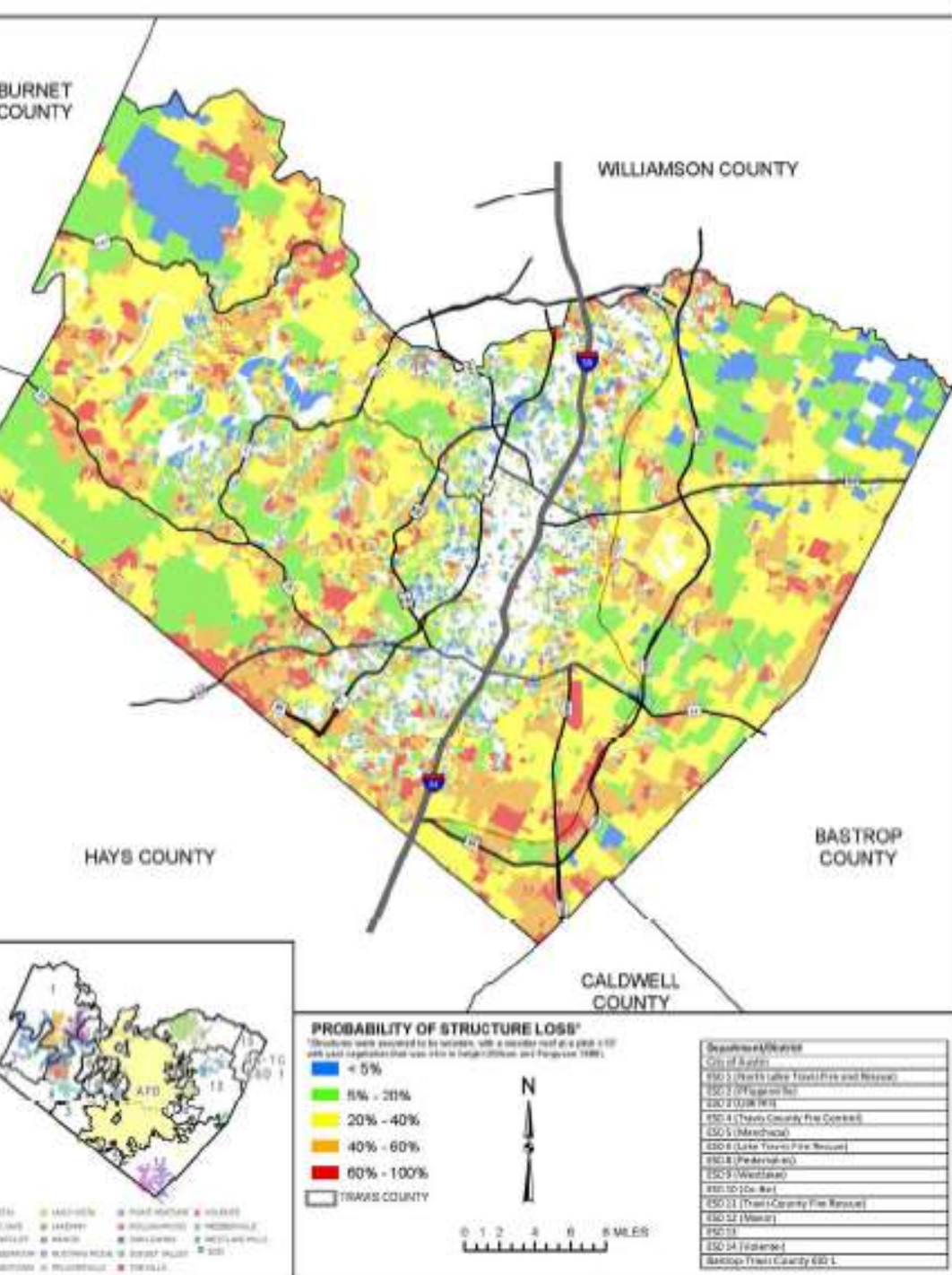
Schools

Critical
Infrastructure

Historical
Sites

Homes and
Businesses

Values at
Risk



Probability of Structure Loss



From at Risk to Empowered

- Facilitate public awareness of wildfire risk
- Offer solutions they can use to address their risk
- Engage residents to make their homes more defensible



Fire Adapted Communities - The Players





Wildfire is everyone's fight

Know your Role we all Have One



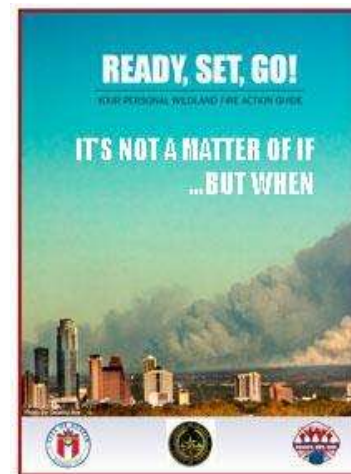
Benchmarking

- Austin/Travis County Leads the state in Nationally Recognized Firewise Communities USA.
- Austin has formed a Firewise Alliance to facilitate grassroots mitigation efforts



Tools We use

- National Cohesive Strategy
- National Fire Danger Rating System
- National Wildfire Coordinating Group standards.
- Community Wildfire Protection Plans
- Strategic Fuels Reduction
- Fire Adapted Communities Learning Network
- Ready Set Go
- Evacuation Planning



Firewise Principles and Environmental BMPs Working Together

Firewise
Principles

A
Resilient,
Healthy
Landscape

Environmental
Stewardship



Mitigating Wildland Fuels

Protecting communities and natural resources through strategic fuels mitigation.

- Blunn Creek
- Circle C Metro Park
- Stephenson Preserve
- Mary Moore Searight
- Commons Ford Preserve
- Still House Hollow
- Mayfield Preserve
- Slaughter Creek
- Shuddle Faith
- Indian Tall Grass Prairie
- Lost Creek
- Baldwin Elementary
- AFD Stations
- Decker Lake Preserve
- Arterial 8 BCCP/Jester Estates
- Lady Bird Johnson Wildflower Center
- Bear Branch WQPL
- J17 WQPL

Shaded Fuel Break



Stillhouse Hollow Nature Preserve



Legend

- 30 Foot
- 100 Foot

14 January 2014 MS
 This product is for informational purposes only and does not constitute a warranty or any other type of assurance. It is not intended to be used for any purpose other than that for which it was created. This product has been prepared by the Public and Recreational Department in the state of Texas. It is not intended to be used for any purpose other than that for which it was created. It is not intended to be used for any purpose other than that for which it was created.

Before



After



Effective Fuels Mitigation

Happens on both sides of the fence and considers combustible homes as potential fuel.

Fuels Project on City of Austin Property



Bulk Brush Pickup



QUESTIONS?

Wildfire Division Program Update
Program Manager Justice Jones
Austin Fire Department

