



**PODER**

People Organized in Defense of Earth and Her Resources

## Drainage Fees, Capital Improvements and Equity in the City of Austin

### Report

Prepared by

Susana Almanza, PODER Executive Director

Erik Granados, Intern- Department of Landscape Architecture & Urban Planning, Texas A& M

Adrian Zeh, Intern – LBJ School of Public Affairs, University of Texas



Flooding on Quicksilver Street in Dove Springs



Inez Garza lost her life in the October 2015 Flood









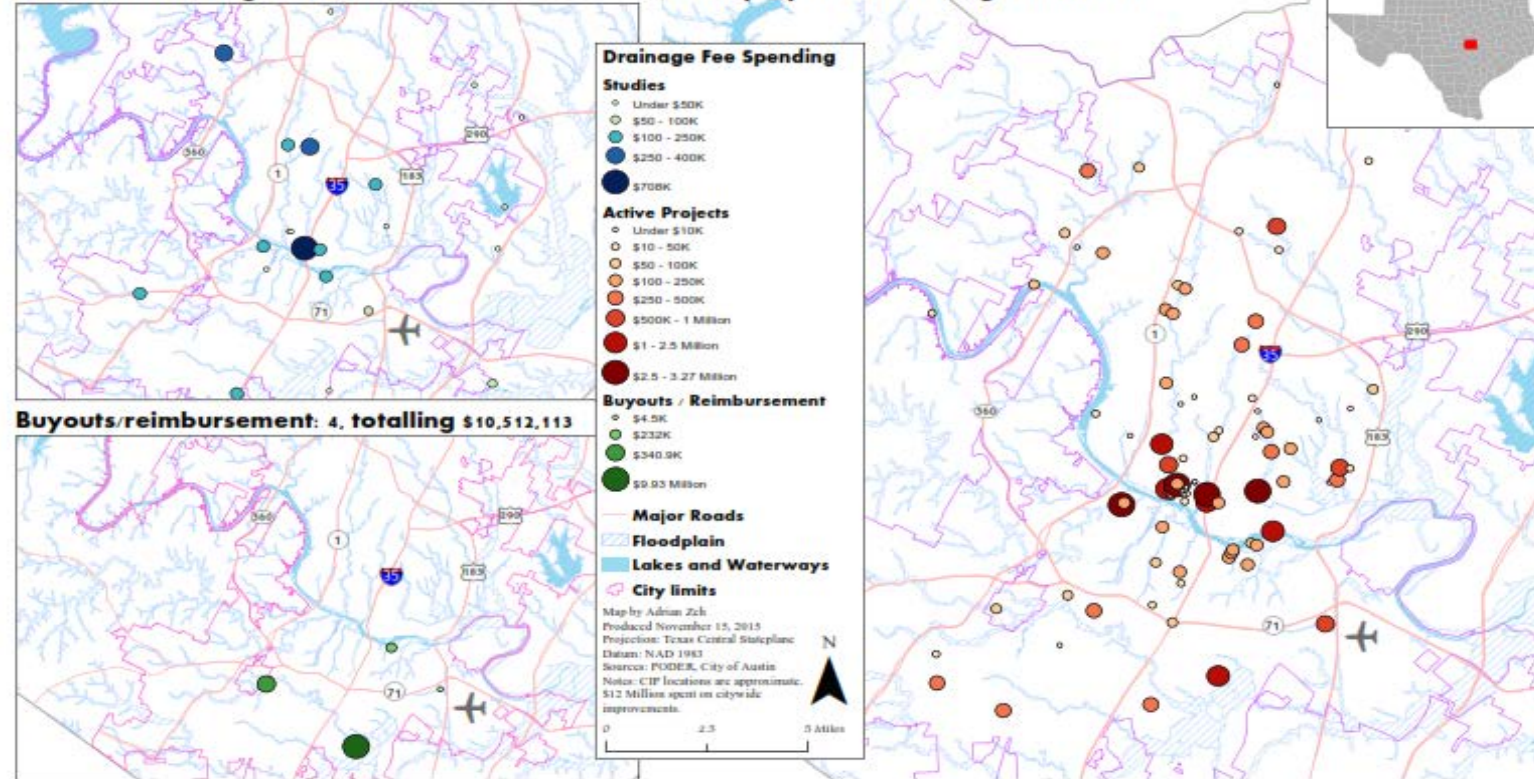
Flooding on Vargas Road  
In the Montopolis  
Community

# Capital Improvements Funded by Drainage Fees

**Capital Improvements Funded by Drainage Fees: \$55,190,854.67**

**Studies: 23, totalling \$2,877,361.60**

**Active projects: 92, totalling \$30,233,480.07**



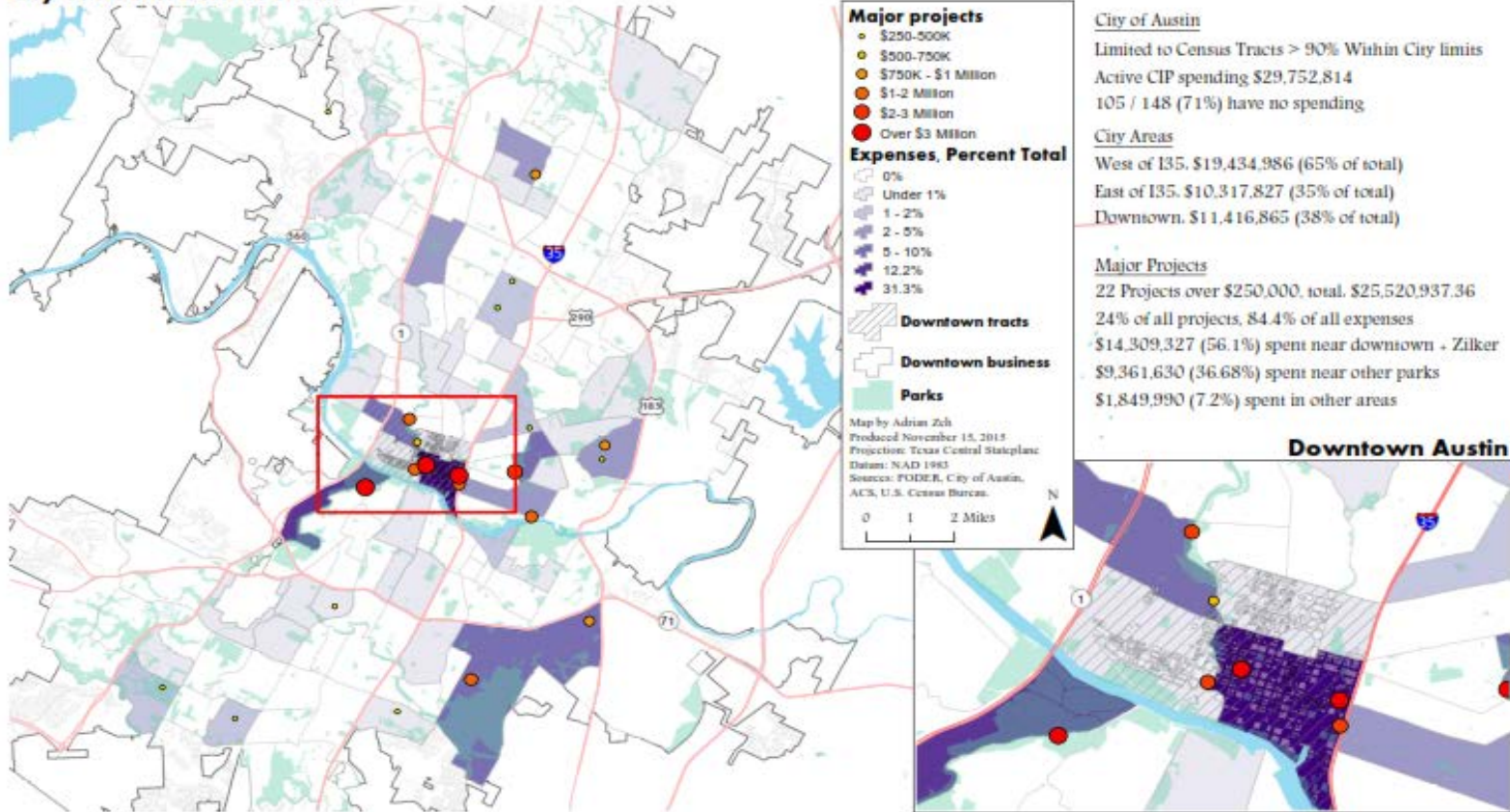
- This map displays active, buyout, and study projects throughout Travis County.
- Buyouts represent about 18% of total drainage-fee spending on CIP projects, and tend to be located in the South, and particularly Southeast (Onion Creek area) part of the city.
- Floodplain studies appear to be mostly West of I-35, though they represent a small fraction of overall spending.
- Active projects represent the majority of spending at about 55% of all CIP spending.



# Spending as a Percent of Total Expenditures

## Spending as a Percent of Total Expenditures

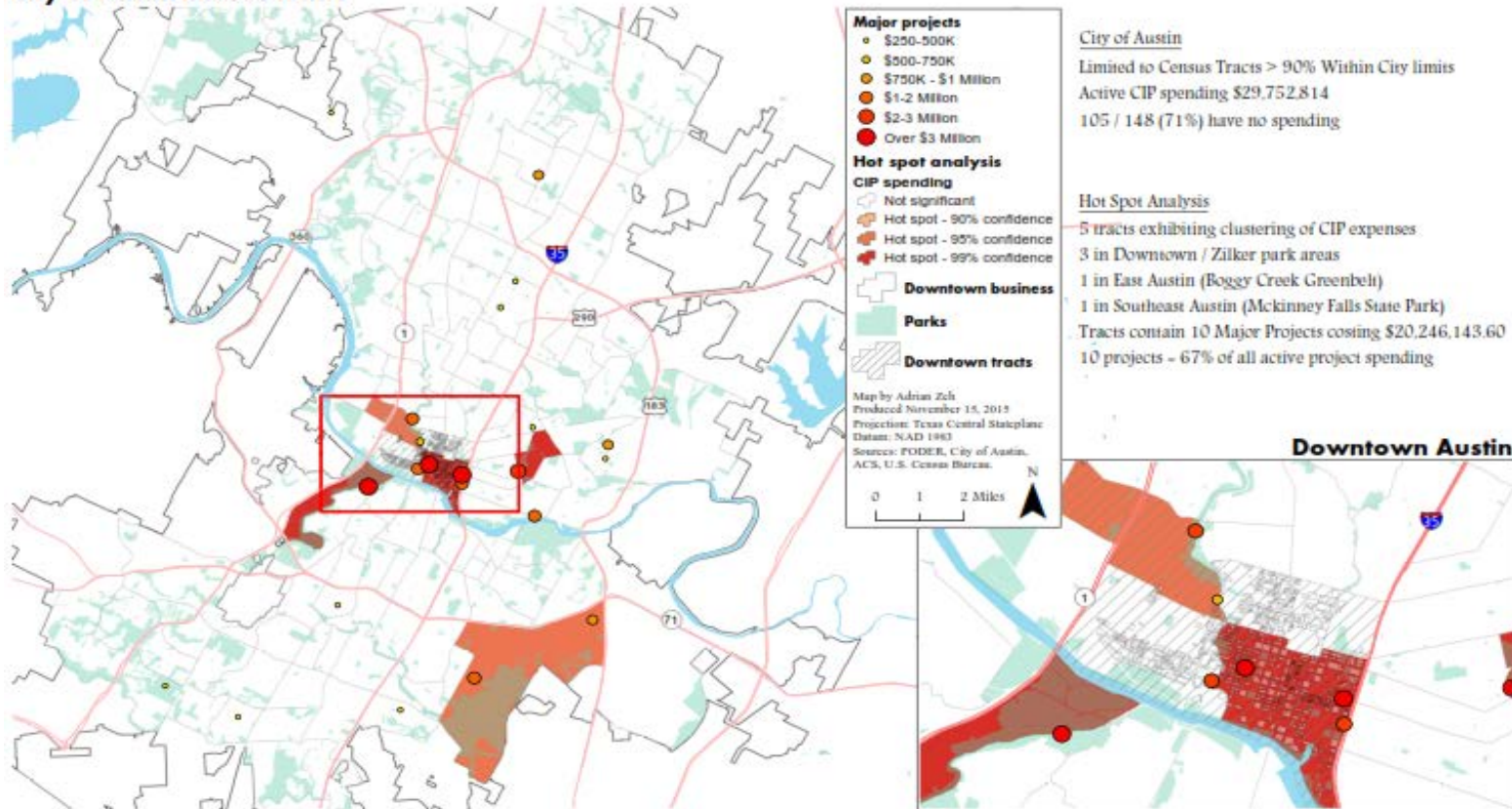
### City of Austin Census Tracts



- Map restricts active projects to just those over \$250,000, which account for 85 % of total spending on active projects.
- City Areas:
  - West of I-35 \$19,434,986 (65%)
  - East of I-35 \$10,317,827 (35%)
  - Downtown \$11,416,865 (38%)
- One downtown tract in particular receives 31 % of all active CIP spending, while 71% of tracts receive no spending.

# Hot Spot Analysis: CIP spending by tract

**Hot Spot Analysis: CIP spending by tract**  
City of Austin Census Tracts



- This map represents the results of hotspot analysis on CIP spending by tract.
- Results show hot spots in two downtown tracts, the tract that includes **Zilker Park** in Southwest Austin, one tract in East Austin that includes a large project on the **Boggy Creek Greenbelt**, and one project occurring near **McKinney Falls State Park**.
- There seems to be a clear bias toward spending drainage fee funds in the downtown business area.
- Outside of downtown, most money seems to be spent in parks.