

# Top 5 Safety Improvement Projects: Update and Phase -1 / Interim Improvements

Mobility Committee  
Austin Transportation Department



# Agenda

- Introduction
- Top 5 Intersections for Safety Improvements
- Proposed Safety Improvements
- Phase-1 / Interim Safety Improvements
- Status Update
- Q & A

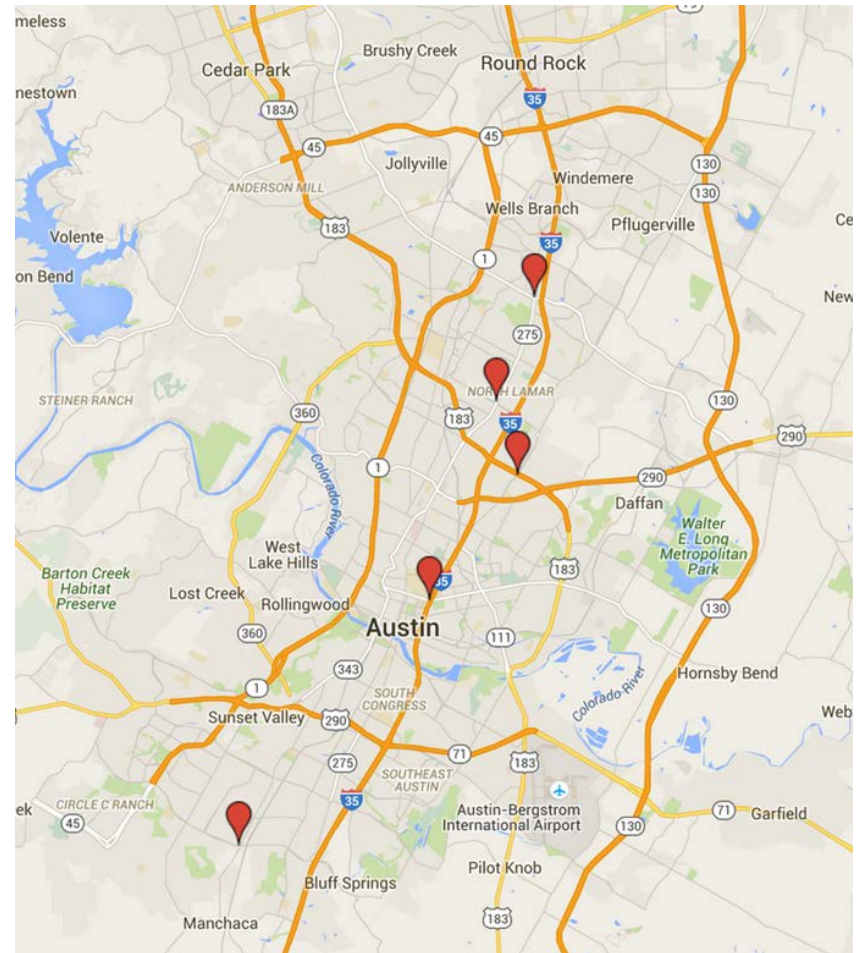
# Selection of Locations For Safety Improvements

- Historical Crash Data Used in Determination
  - Considered crash frequency and crash rates
  - Considered casualties (fatalities and injuries)
- Other Criteria for Determination
  - Discernable crash clusters / patterns
  - Mitigated by engineering improvements
  - High safety benefits and cost-effective implementation

# Top 5 Intersections

## For Safety Improvements

- N Lamar Boulevard / Parmer Lane
- N Lamar Boulevard / Rundberg Lane
- US 183 Service Road / Cameron Road
- IH-35 Service Road / MLK Boulevard
- Slaughter Lane / Manchaca Road
- All require coordination with TxDOT



# Top 5 Intersections

## Estimated Cost for Safety Improvements

Locations	Design Cost (Estd.)	Construction Cost (Estd.)	Project Management Cost (Estd.)	Total Cost (Estd.)
N. Lamar Blvd. / Parmer Ln.	\$65,000	\$630,000	\$15,000	<b>\$710,000</b>
N. Lamar Blvd. / Rundberg Ln.	\$53,000	\$636,000	\$15,000	<b>\$704,000</b>
183 Service Rd. / Cameron Rd.	\$72,000	\$218,000	\$5,000	<b>\$295,000</b>
IH 35 Service Rd. / MLK	\$42,000	\$92,000	\$2,000	<b>\$136,000</b>
Slaughter Ln / Manchaca Rd.	\$117,000	\$1,833,000	\$43,000	<b>\$1,993,000</b>
<b>Total Estimated Cost</b>				<b>\$3,838,000</b>

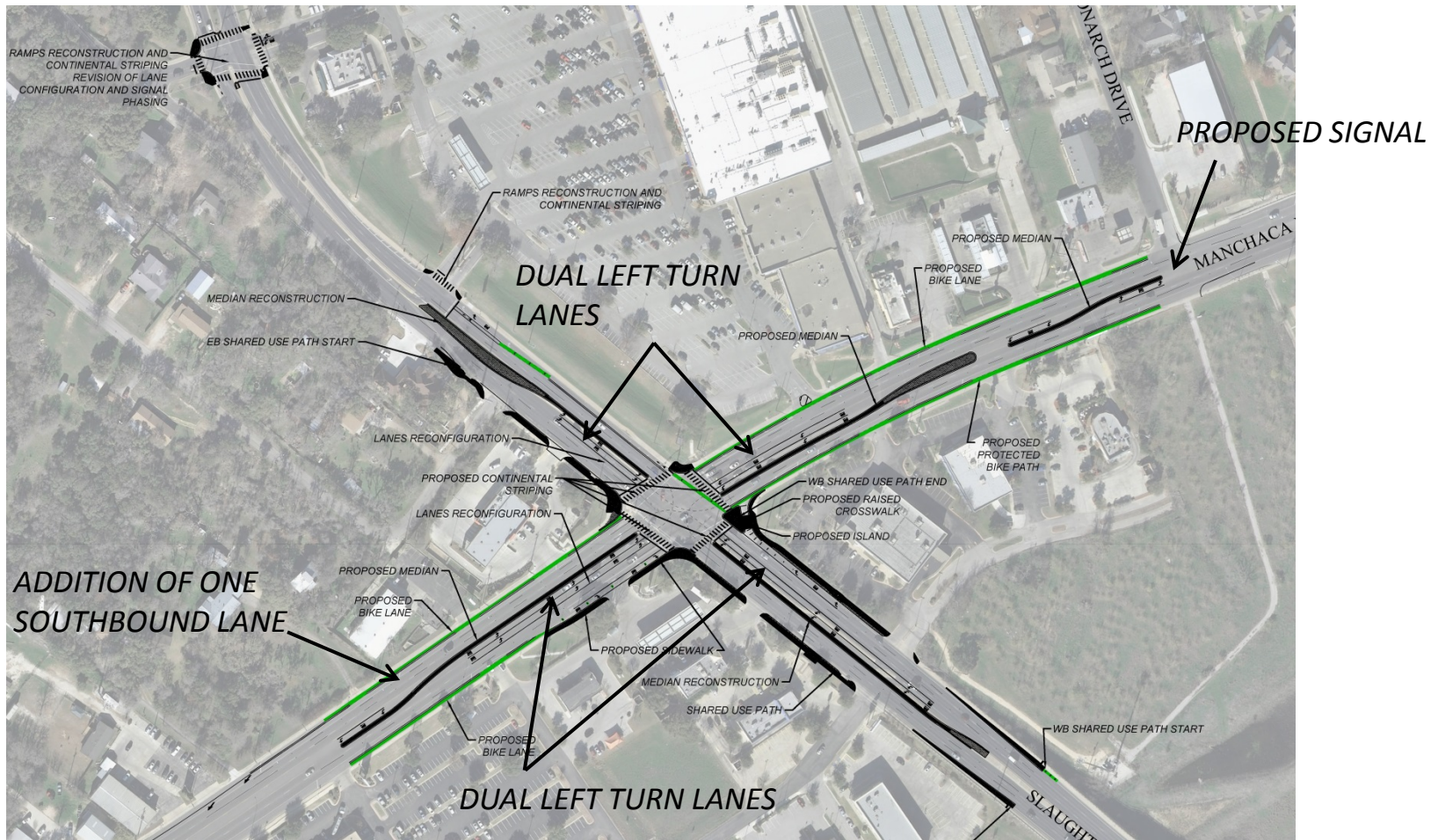


# Slaughter Lane / Manchaca Road



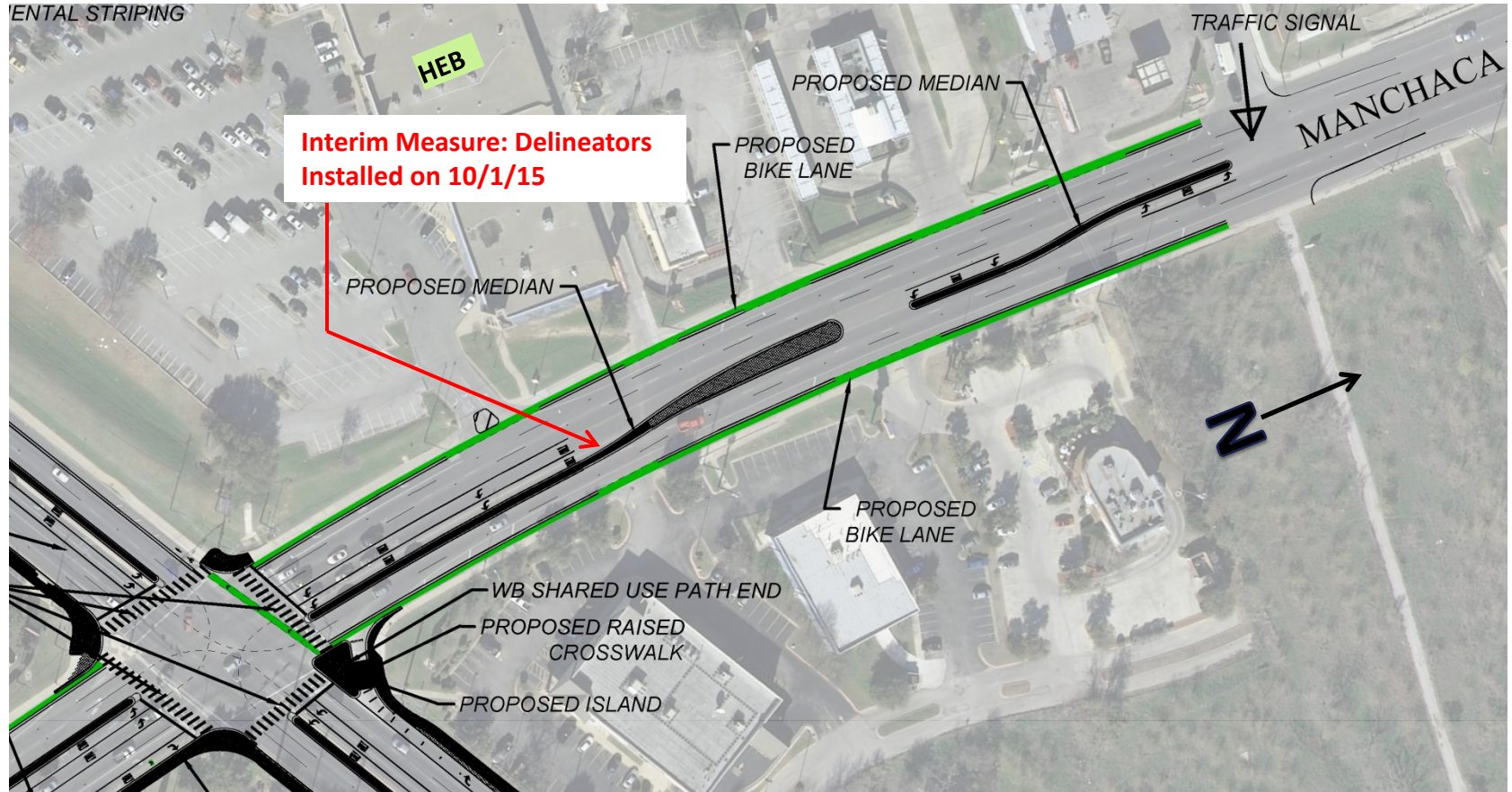


# Slaughter Lane / Manchaca Road Safety Improvements





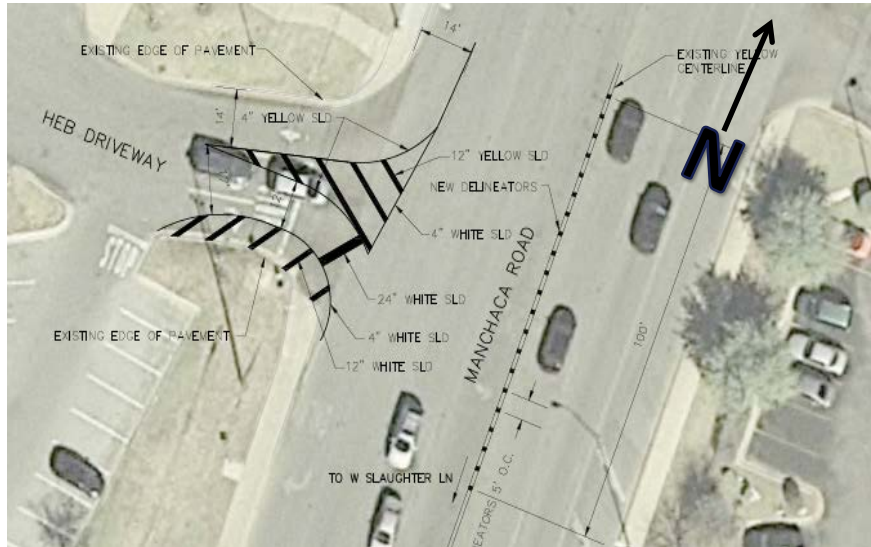
# Phase 1 Safety Improvements





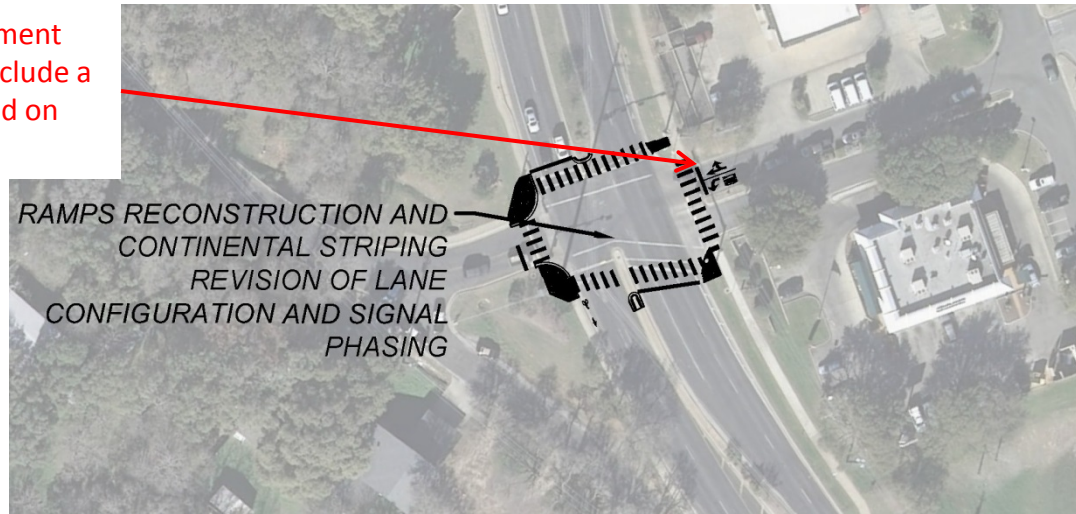
# Phase 1 Safety Improvements

Preventing crash prone left-turn ins and outs



# Phase 1 Safety Improvements

Revision of Lane Assignment  
and Signal Phasing to Include a  
Green Arrow: Completed on  
03/15/2016

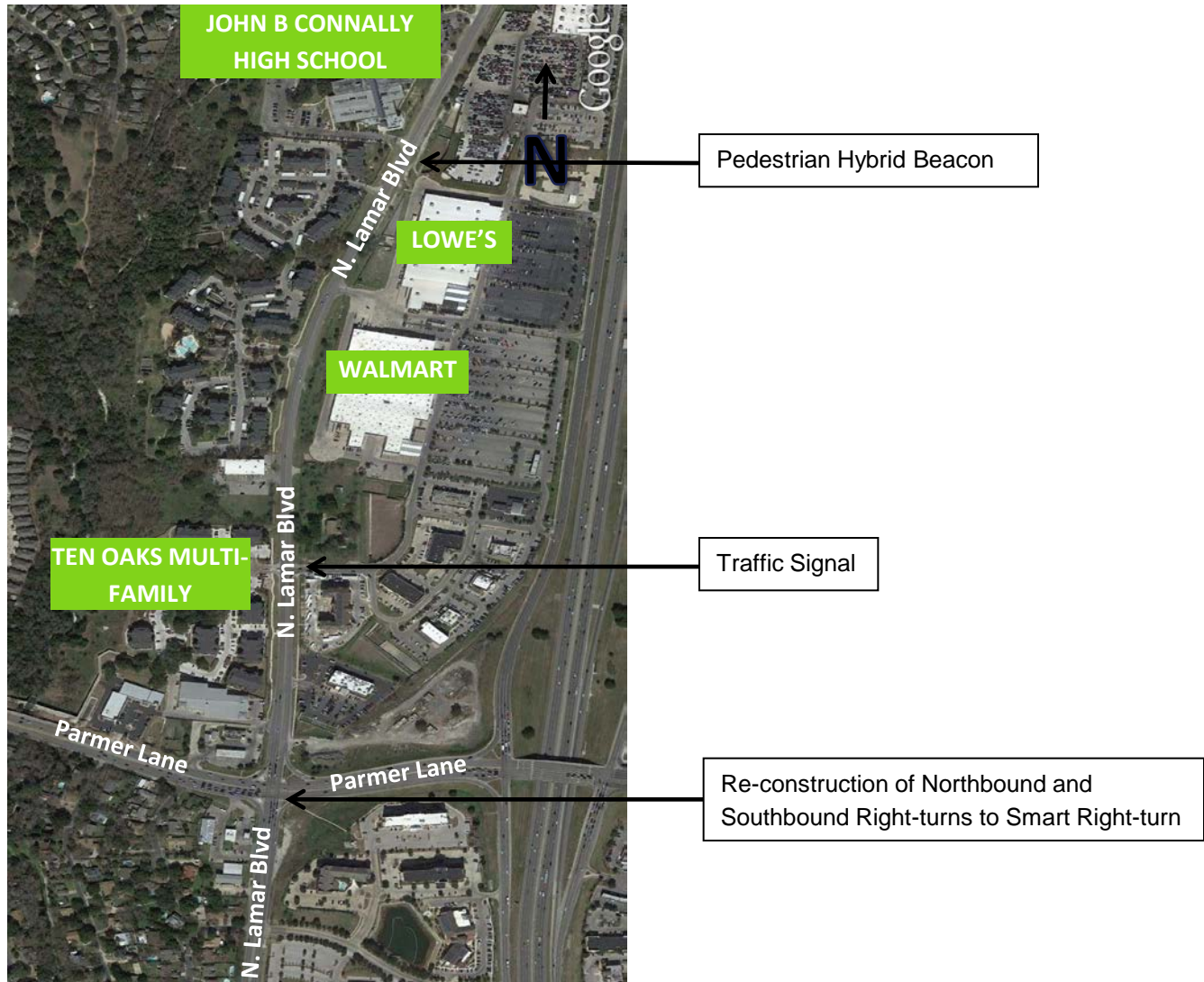


# Estimated Cost and Timeline

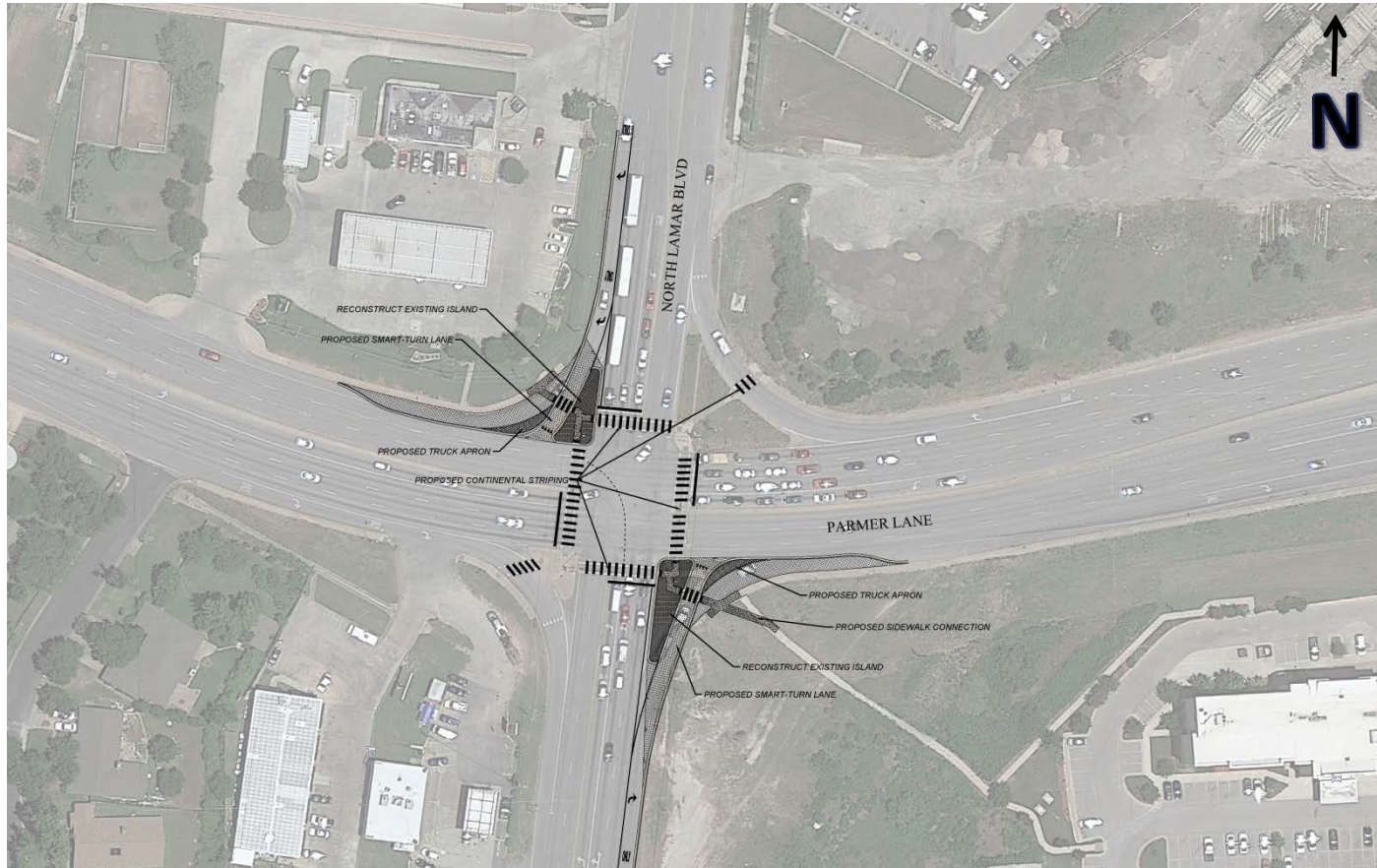
- Total Estimated Construction Cost: \$1,833,000
- Manchaca Road: TxDOT Jurisdiction
- TxDOT's Contribution: \$305,054
- City is completing all the design work
- TxDOT will manage the construction phase
- Timeline for Additional Phase 1 Improvement: Signal at Monarch Drive/Manchaca Road: August/September 2016
- Timeline for Phase-2 Construction: Spring/Summer 2017



# Lamar Blvd / Parmer Lane



# Lamar Blvd / Parmer Lane Safety Improvements





# Phase-1 Safety Improvements Underway

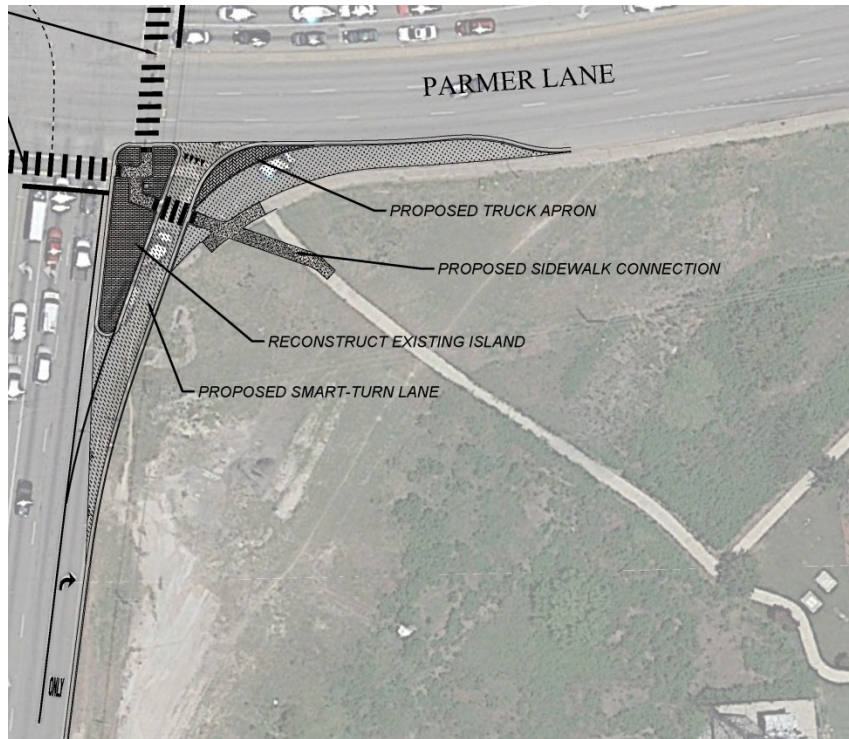


- Pedestrian Hybrid Beacon (PHB)
- Under Construction; open in next 2/3 weeks
- Estimated Construction Cost: \$115,000

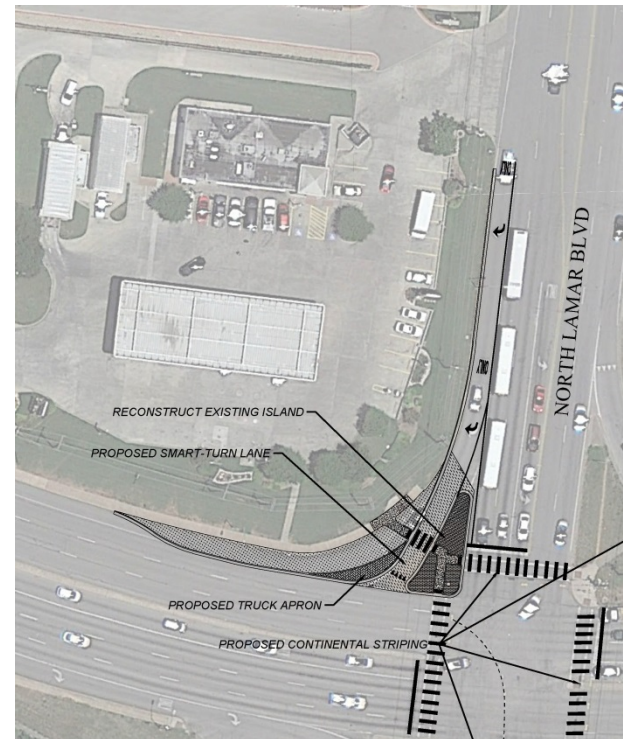
- Traffic Signal
- Under Construction; approx. completion: June
- Estimated Construction Cost: \$202,000



# Lamar Blvd/ Parmer Lane Phase-2 Safety Improvements



Northbound Smart Right-turn



Southbound Smart Right-turn

# Phase-2 Estimated Cost & Timeline

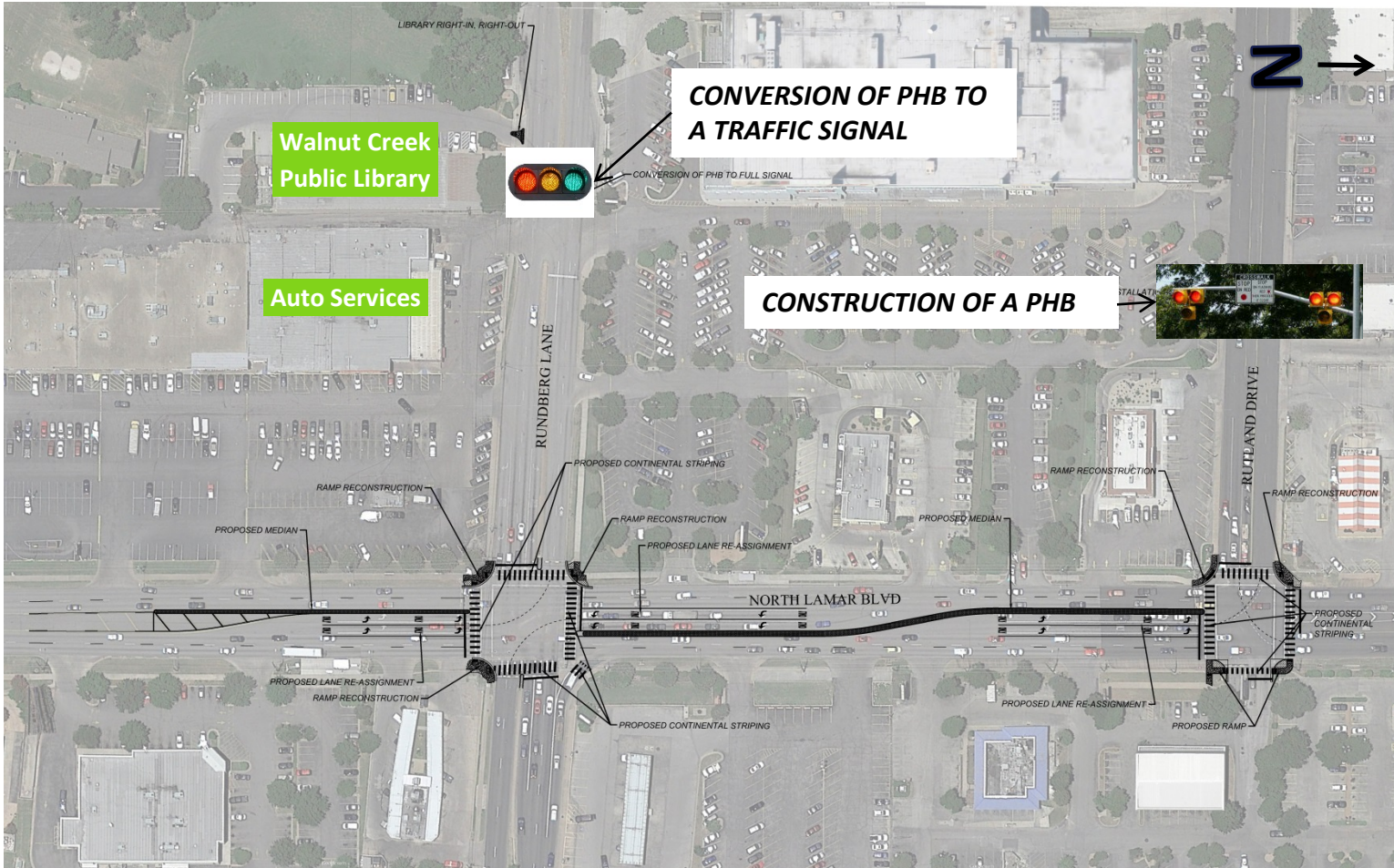
- Estimated Construction Cost: \$313,000
- TxDOT Jurisdiction
- City has completed 60% design.
- Currently coordinating with TxDOT for permitting, construction phasing, traffic control etc.
- City's constructor will complete the construction.
- Estd. Timeline: Fall 2016 depending on TxDOT's process and approval of Advance Funding Agreement by City Council.

# Lamar Blvd / Rundberg Lane

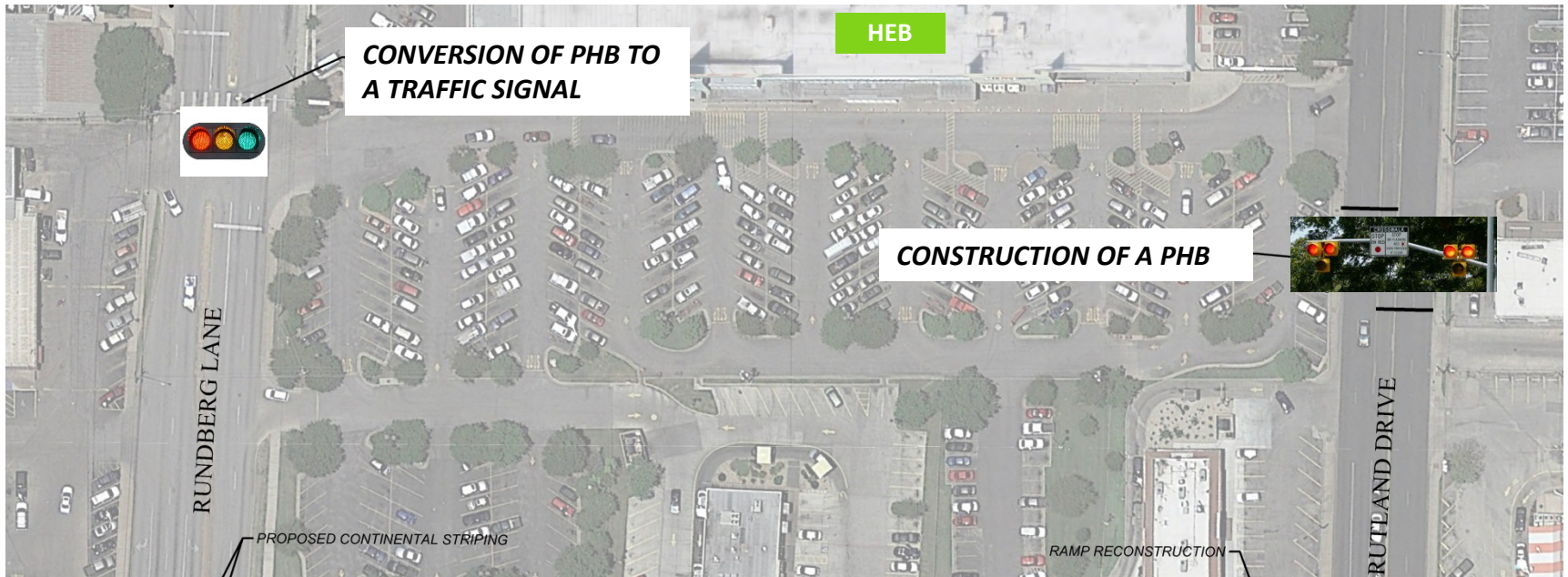




# Lamar Blvd / Rundberg Lane Safety Improvements



# Lamar Blvd/ Rundberg Lane Phase -1 Safety Improvements

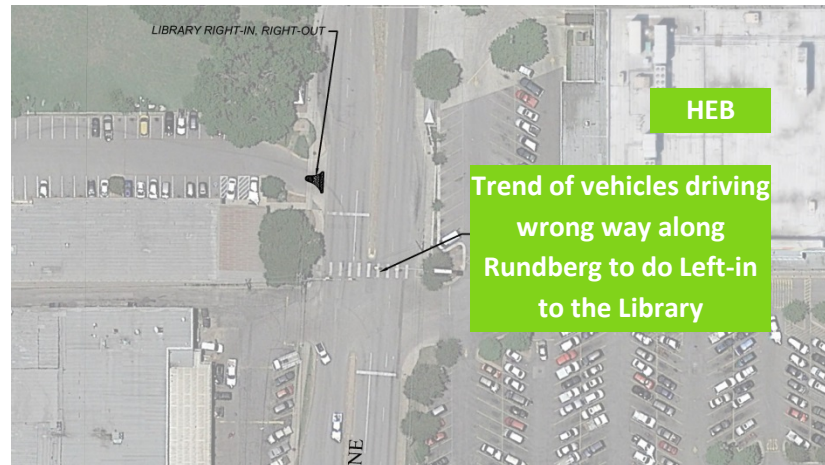
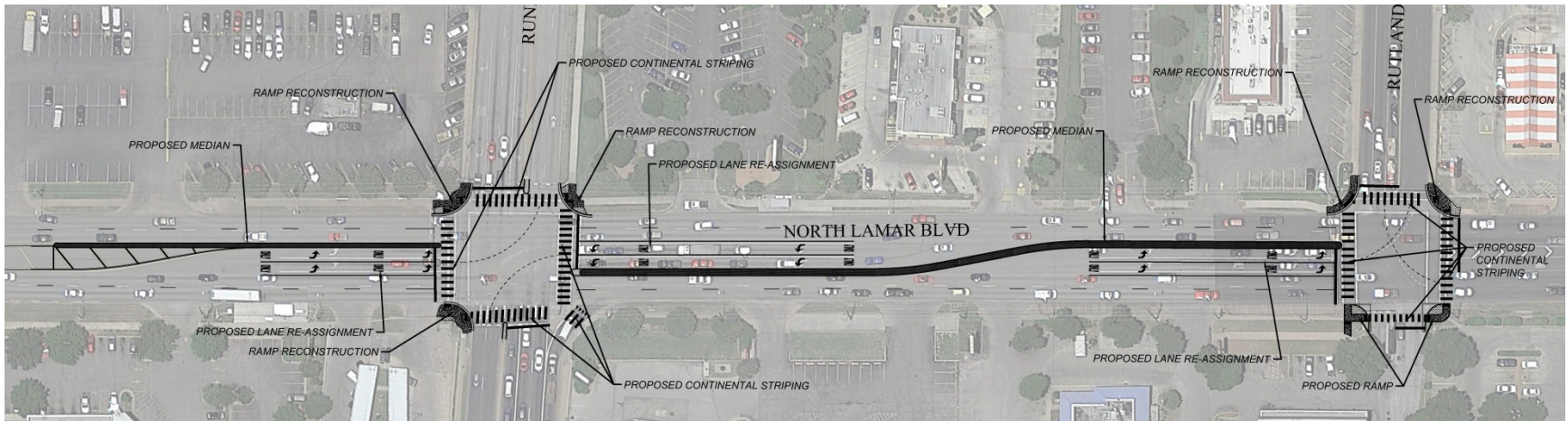


- Traffic Signal
- Construction: July
- Estimated Construction Cost: \$101,000

- Pedestrian Hybrid Beacon (PHB)
- Construction: May-June
- Estimated Construction Cost: \$62,000



# Lamar Blvd/ Rundberg Lane Phase -2 Safety Improvements **N** →

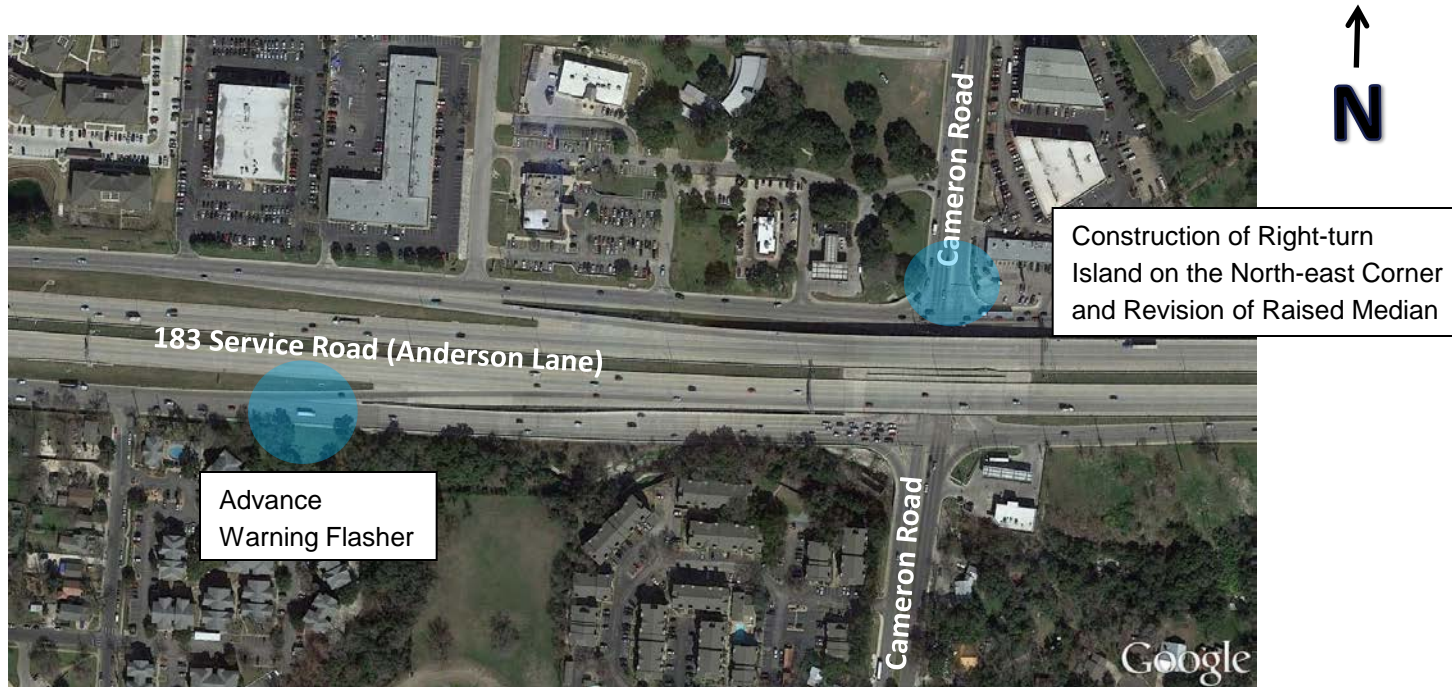




# Phase-2 Estimated Cost & Timeline

- Estimated Construction Cost: \$473,000
- TxDOT Jurisdiction
- City has completed 60% design.
- Currently coordinating with TxDOT for permitting, construction phasing, traffic control etc.
- City's contractor will complete the construction.
- Estd. Timeline: Fall 2016 depending on TxDOT's process and approval of Advance Funding Agreement by City Council.

# 183 Service Road / Cameron Road



# 183 Service Road / Cameron Road Phase -1 Safety Improvements

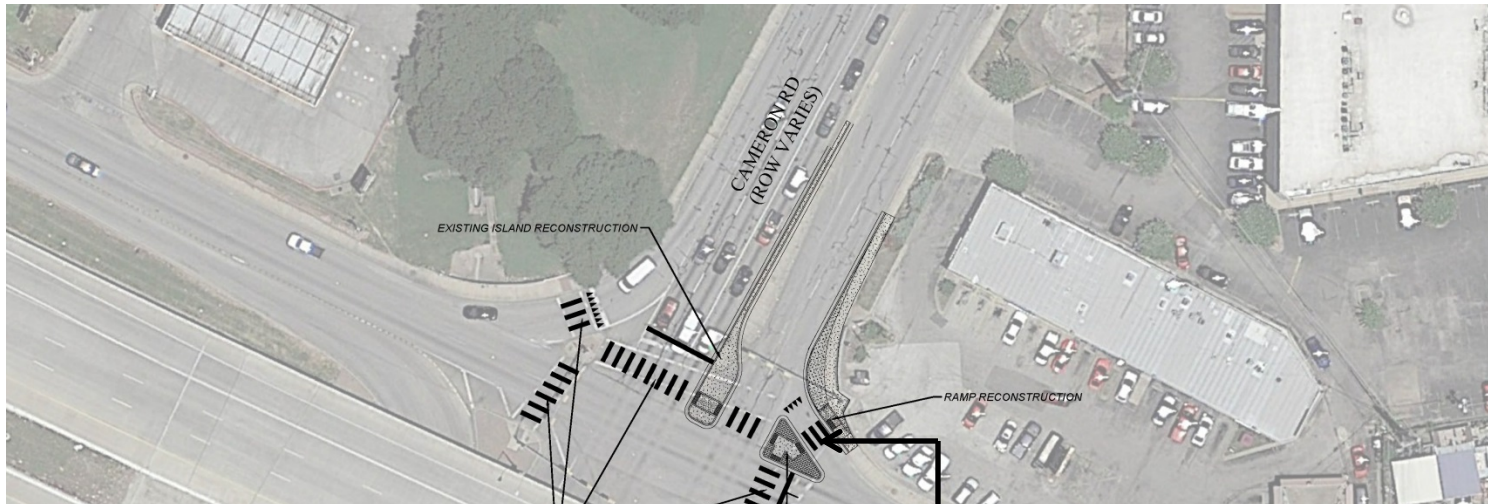


**ADVANCE WARNING  
FLASHER**

- Advance Warning Flasher
- Construction: June
- Estimated Construction Cost:  
\$29,000



# 183 Service Road / Cameron Road Phase -2 Safety Improvements

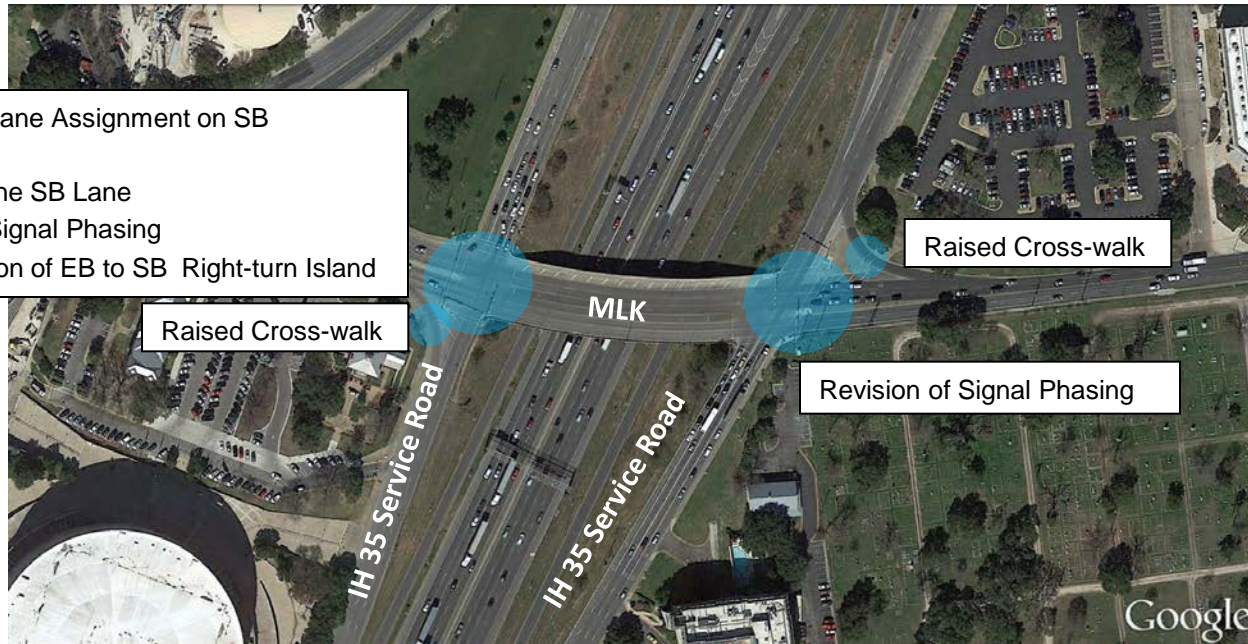


- Estimated Construction Cost: \$188,000
- TxDOT Jurisdiction
- City has completed the design.
- Currently coordinating with TxDOT for permitting, construction phasing, traffic control etc.
- Construction: Fall 2016 depending on TxDOT's process and approval of AFA by City Council.



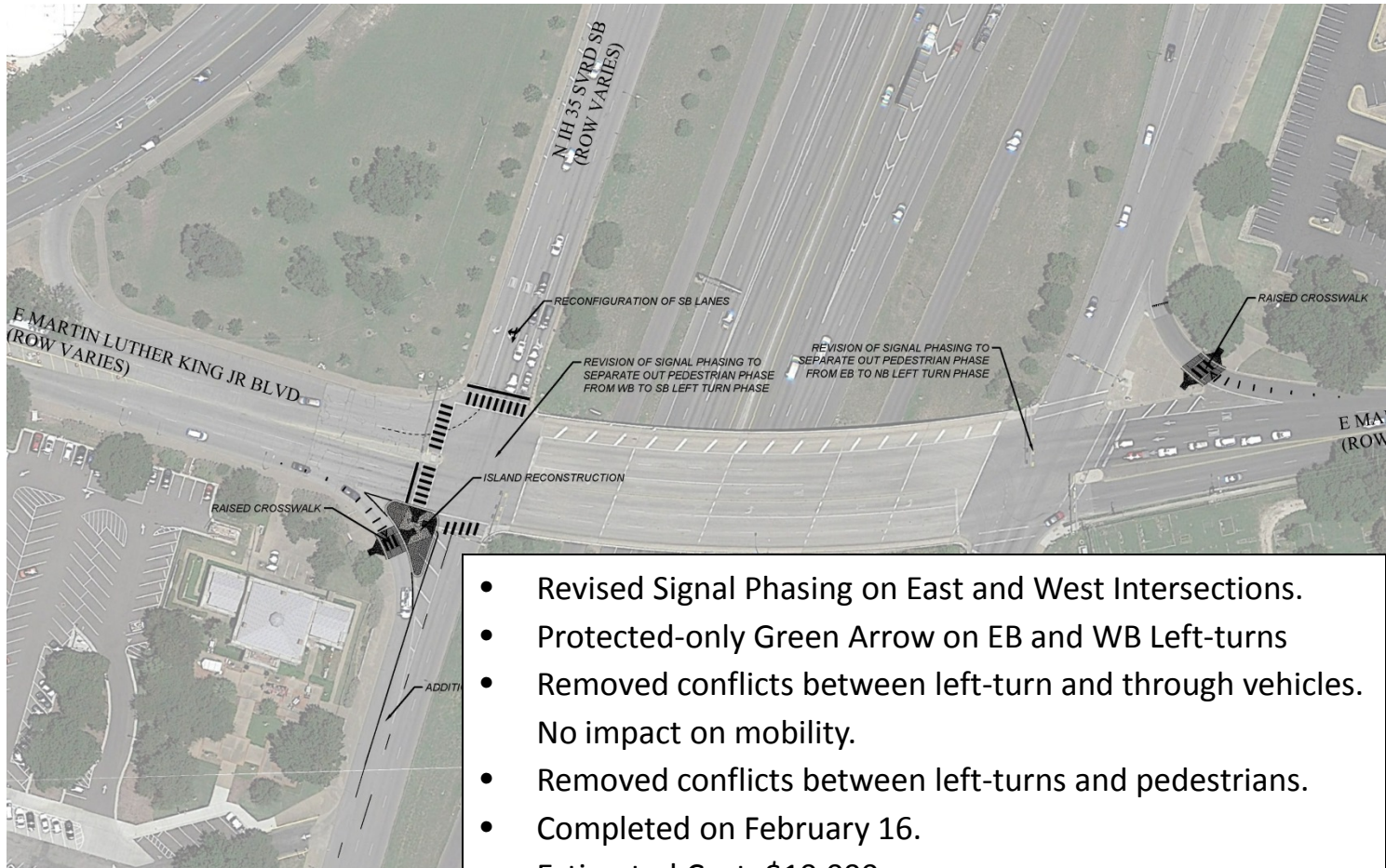
# IH 35 Service Road / MLK

- Revision of Lane Assignment on SB Approach
- Addition of one SB Lane
- Revision of Signal Phasing
- Reconstruction of EB to SB Right-turn Island





# IH 35 Service Road / MLK Phase -1 Safety Improvements

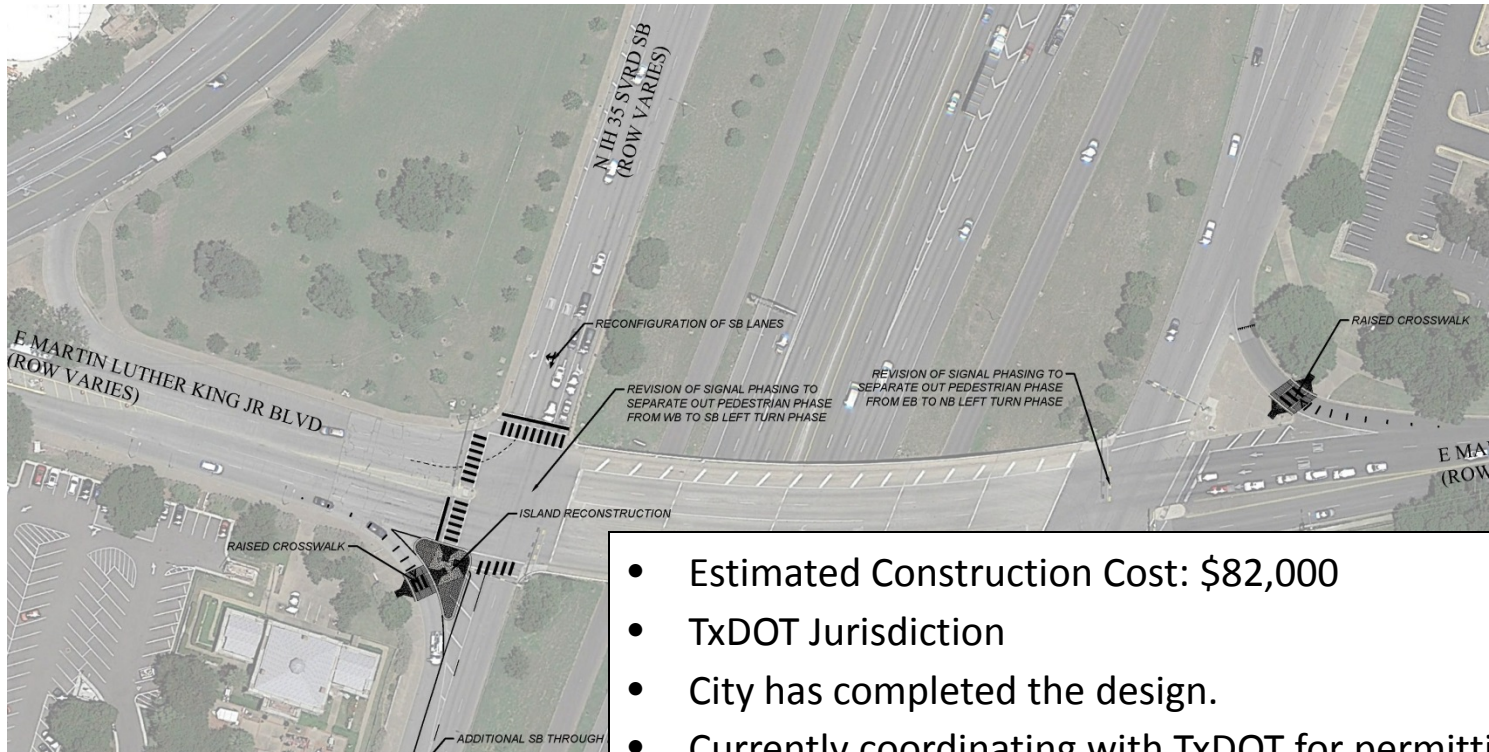


- Revised Signal Phasing on East and West Intersections.
- Protected-only Green Arrow on EB and WB Left-turns
- Removed conflicts between left-turn and through vehicles. No impact on mobility.
- Removed conflicts between left-turns and pedestrians.
- Completed on February 16.
- Estimated Cost: \$10,000



# IH 35 Service Road / MLK

## Phase -2 Safety Improvements



- Revision of Lane Assignment on SB Approach
- Addition of one SB Lane
- Reconstruction of EB to SB Right-turn Island
- Raised Crosswalk on EB and WB Right-turns

- Estimated Construction Cost: \$82,000
- TxDOT Jurisdiction
- City has completed the design.
- Currently coordinating with TxDOT for permitting, construction phasing, traffic control etc.
- Construction: Fall 2016 depending on TxDOT's process and approval of AFA by City Council.

Questions??