

ORDINANCE NO. 20161013-023

AN ORDINANCE AMENDING ORDINANCE NO. 20061116-055 WHICH ADOPTED THE EAST RIVERSIDE/OLTORF COMBINED NEIGHBORHOOD PLAN AS AN ELEMENT OF THE IMAGINE AUSTIN COMPREHENSIVE PLAN, TO CHANGE THE LAND USE DESIGNATION ON THE FUTURE LAND USE MAP FOR PROPERTY LOCATED AT 2624 METCALFE ROAD.

BE IT ORDAINED BY THE CITY COUNCIL OF THE CITY OF AUSTIN:

PART 1. Ordinance No. 20061116-055 adopted the East Riverside/Oltorf Combined Neighborhood Plan as an element of the Imagine Austin Comprehensive Plan.

PART 2. Ordinance No. 20061116-055 is amended to change the land use designation from single family to higher density single family for the property located at 2624 Metcalfe Road on the future land use map attached as Exhibit "A" and incorporated in this ordinance, and described in File NPA-2016-0021.02 at the Planning and Zoning Department.

PART 3. This ordinance takes effect on October 24, 2016.

PASSED AND APPROVED

_____, 2016

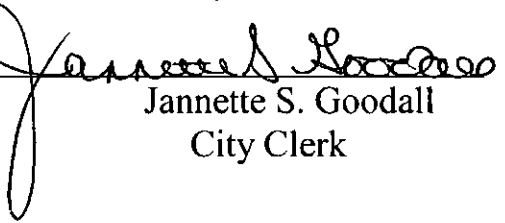
APPROVED:


Anne L. Morgan
City Attorney

§
§
§


Steve Adler
Mayor

ATTEST:


Jannette S. Goodall
City Clerk

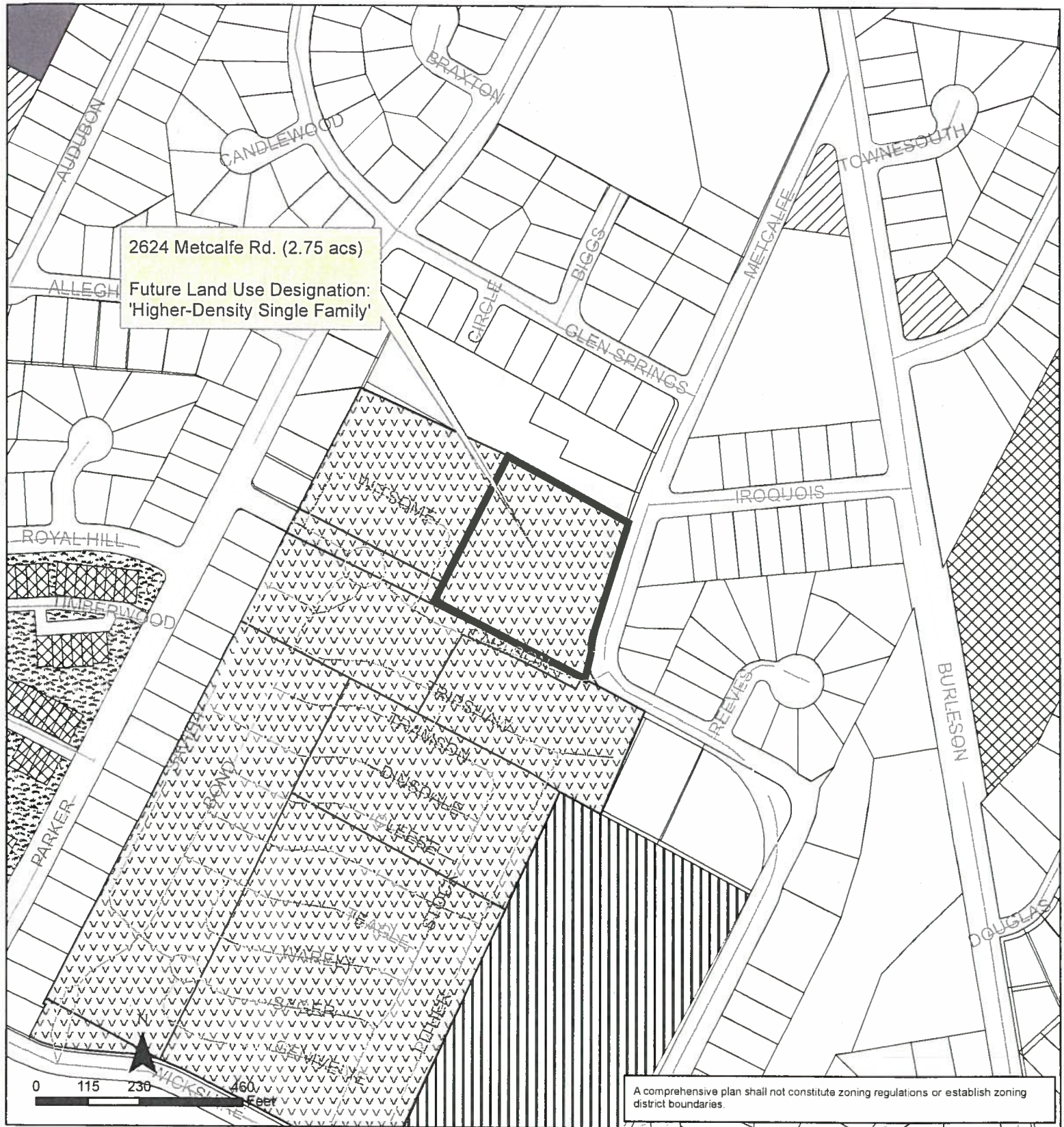


Exhibit A

East Riverside/Oltorf Combined Neighborhood Planning Area

Amendment NPA-2016-0021.02

This product is for informational purposes and may not have been prepared for or be suitable for legal, engineering, or surveying purposes. It does not represent an on-the-ground survey and represents only the approximate relative location of property boundaries.

This product has been produced by the Planning and Development Review for the sole purpose of geographic reference. No warranty is made by the City of Austin regarding specific accuracy or completeness.



City of Austin
Planning and Zoning Department
Created on 9/14/2016, by: meredithm

Future Land Use

	Subject Property		Office
	Single-Family		Civic
	Higher-Density Single-Family		Recreation & Open Space
	Multi-Family		Transportation
	Commercial		Excluded from FLUM
	Mixed Use		