

**RESOLUTION NO. 20170216-032**

**WHEREAS**, the birth of what is now the Capital City of Texas occurred in 1837 at the Treaty Oak in a settlement that was once called Waterloo, the settlement was later renamed Austin and was designated as the seat of state government in 1839; and

**WHEREAS**, the State Capitol building was destroyed by fire in 1881; and

**WHEREAS**, The Texas State Capitol is of a unique and rare Renaissance Revival style completed in 1888, built by convicts, former slaves, and illegal foreign labor from Scotland, designed by Elijah Myers, a renowned American architect; and

**WHEREAS**, since opening to the general public in 1888 the Capitol has been a landmark for all who visit and live in the City of Austin, a magnificent priceless public landmark, a unique building that is the property of Texans, is higher than the Capitol of the United States of America; and

**WHEREAS**, as early as 1965 the public noticed that the sight of the Texas Capitol might be threatened by vertical growth; and

**WHEREAS**, in 1981 the Senate State Municipal Planning Study Committee produced a report wherein they recommended to the State Legislature to comply with any City regulations designed to preserve the view of the Capitol unless determined to be unduly burdensome; and

**WHEREAS**, a draft *Capitol View Preservation Study* was completed by the Planning Department of the City of Austin in February 1983 and subsequently approved by the City Council echoing the State's findings regarding feasibility, public benefit, describing the formula that had been developed by the City of

Austin Planning Department to determine the compatibility of new structures with the views of the Capitol; and

**WHEREAS**, citizens were encouraged in the City's Capitol View Preservation Study to bring forth other Capitol View Corridors that may be identified in the future; and

**WHEREAS**, Capitol View Corridors were established as late as 1985 due to the obvious public benefit of access to an unobstructed view of the Capitol building; and

**WHEREAS**, there are a number of Capitol View Corridors that were identified during the study periods in the early 1980s but were not legislated such as the view from the Texas State Cemetery, Huston-Tillotson University and the view from Rosewood and Hargrave among others; and

**WHEREAS**, Capitol View Corridors have proven to be significant public benefit and are able to coexist with residential and commercial real estate development such as the Seaholm Development, the Austonian, the Frost Bank Tower, the 360 Condos, the W Hotel among others; and

**WHEREAS**, the real estate development that has occurred in downtown Austin since the inception of the Capitol View Corridors has proven that the Capitol View Corridors are assets to the community at large; and

**WHEREAS**, citizens of Texas should be able to identify where state law is made and be able to engage their lawmakers; and

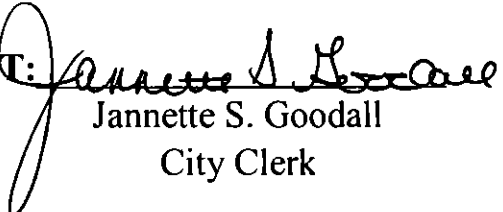
**WHEREAS**, the City should memorialize the unobstructed views of the Capitol that were noted in Ordinance No. 19840419-K which continue to be unobstructed in 2017, as well as the views which have been identified by community members; **NOW, THEREFORE**,

**BE IT RESOLVED BY THE CITY COUNCIL OF THE CITY OF AUSTIN:**

1. The City Manager is directed to prepare a recommendation consisting of one or more planning options for Council to consider that would extend protections comparable to existing Capitol View Corridors, as established under City Code § 25-2-162 (*Capitol View Corridor (CVC) Overlay District Purpose*) and Texas Government Code Chapter 3151, to the areas generally described in the 2015 Bowman Consulting report entitled "Proposed East Austin Capitol View Corridors," attached hereto as Exhibit A, except for the Rosewood Park Corridor, which is excluded from this resolution. The City Manager shall provide the recommendations on or before the May 18, 2017 Council meeting.
2. In developing options in response to this resolution, the City Manager should:
  - (A) Verify the surveyed coordinates identified in Exhibit A;
  - (B) Consider the recommendations and planning principles set forth in the 1983 Capitol View Preservation Study;
  - (C) Consider including potential mitigation measures, to the extent deemed necessary or appropriate to address the impacts of the new corridors on affected properties; and
  - (D) Include any non-substantive corrections or updates to existing Capitol View Corridor sections of City Code, as deemed appropriate.

ADOPTED: February 16, 2017

ATTEST:

  
Jannette S. Goodall  
City Clerk

# **EXHIBIT A**

## **PROPOSED EAST AUSTIN CAPITOL VIEW CORRIDORS**

**Prepared by:  
Bowman Consulting  
November 2, 2015**



November 2, 2015

Mr. Greg Smith  
President and CEO  
Austin Revitalization Authority  
Austin, Texas

RE: Proposed East Austin Capitol View Corridors.

Dear Mr. Smith:

Field survey work for this project was conducted on October 22<sup>nd</sup> and 23<sup>rd</sup>, 2015. We gathered the field data for the five pair of origin or beginning points for the proposed Capitol View Corridors.

- 1) The first view corridor is the Rosewood Park Corridor at 900 Thompson Street. The two beginning points for this corridor are on opposite sides of Thompson Street on outside edges of the concrete sidewalks.
- 2) The second view corridor is the Lott Park Corridor. Both beginning points are in the basketball court, one is under the net and the other is at the free throw line.
- 3) The third view corridor is the Juniper Street Corridor. One of the beginning points is at the southwest corner of the intersection of Juniper St. and Lydia St. The other beginning point is at the southwest corner of the intersection of Juniper St. and Navasota St.
- 4) The fourth view corridor is the Texas State Cemetery Corridor. Both of the beginning points are on a concrete path on a hill inside the cemetery grounds.
- 5) The fifth view corridor is the Houston-Tillotson University Corridor. Both beginning points are along the western edge of the western colonnade of the Jackson Moody Building up the hill adjacent to the athletic field.

Survey data was collected with Leica Global Navigation Satellite System (GNSS) receivers utilizing the Leica SmartNet service. Redundant GNSS data was collected on each of the beginning points during separate sessions. Ties to monuments in the City of Austin survey control network were also made. The data was reviewed and processed in our office with the Leica office software. The position for each of the beginning points is reported in Texas Coordinate System, Central Zone, North American Datum (NAD) 1983 coordinates; elevations are based on the NAVD 1988 datum using the Geoid Model 12A. The position of the Texas State Capitol Building dome is based upon the NAD 1983 coordinates published by the National Geodetic Survey. Bearings, distances and elevations for the proposed view corridors were computed using the published position of the Capitol dome and the position of the beginning points based upon our survey data. The width of the corridor at the beginning points is a rounded distance measured perpendicular to the corridor line from the opposite beginning point.

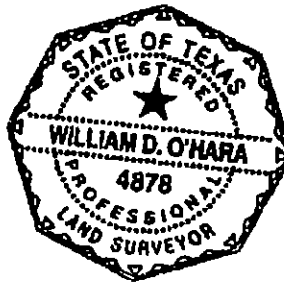
The elevations are rounded to the nearest one-half foot at the ground and then raised either 4.5-ft or 5.0-ft to be an even number at a height suitable for most people to view the Capitol from. The appropriate data has been inserted into the draft "Central East Austin Capitol View Corridor Resolution" and made a part of this report. Other attachments include a point list and description, a graphic presentation of the beginning points, and a copy of our field book pages.

This may well require additional explanation. Please do not hesitate to contact me by phone or email if I can be of further assistance.

I hereby certify the survey data collected for this project and presented herein, and in the five (5) attachments, is true and correct to the best of my knowledge.

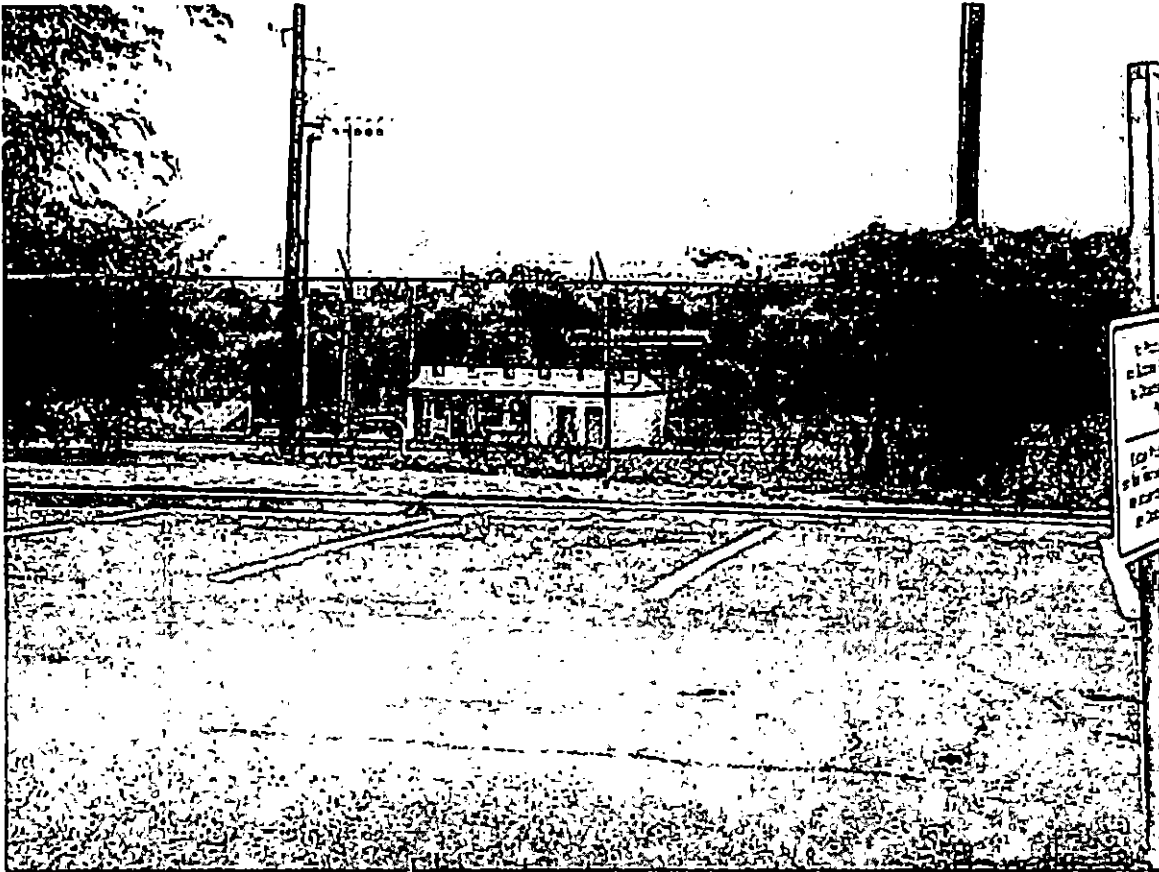


William D. O'Hara  
Registered Professional Land Surveyor No. 4878  
State of Texas



Enclosures:

- Draft of the "Central East Austin Capitol View Corridor Resolution" with inserted data for the proposed corridor limits.
- Data sheet showing the point numbers, coordinates, elevation, and description for points collected with GNSS and the points calculated.
- Sketches of the beginning point pairs and the termination points at the Capitol.
- An overall sketch showing the positional relationship of the beginning point pairs and the calculated corridor boundaries.
- Copy of seven pages of the field book used for this project.
- Copy of six pictures taken from three beginning point pairs of the proposed view corridors.



View looking west toward Capitol from 1st beginning point for the Rosewood Park Corridor. Picture taken in the morning 10-22-2015. Cloudy day. Capitol building barely visible over the right corner of the yellow building in the foreground.



View looking west toward Capitol from 2<sup>nd</sup> beginning point for the Rosewood Park Corridor. Picture taken in the morning of 10-22-2015.





View of the Capitol building from the 1<sup>st</sup> beginning point of the Juniper St. Corridor.

Picture taken 10-22-2015.



View of the Capitol building from the 2<sup>nd</sup> beginning point of the Juniper St. Corridor.

Picture taken 10-22-2015.



**View of the Capitol building from the 2nd beginning point of the Lott Park Corridor. This point is under the hoop on the basketball court. Picture taken 10-22-2015.**



View of the Capitol building from the 1st beginning point of the Lott Park Corridor. This point is at the free throw line on the basketball court. Picture taken 10-22-2015.

## **Central East Austin Capitol View Corridor Resolution**

WHEREAS, The Capitol of the State of Texas is the paramount symbol of Texas history and a preeminent landmark that embodies Austin's image as the seat of government of the State of Texas; and

WHEREAS, its high visibility serves to foster a sense of place for Austinites; and

WHEREAS, at the behest of citizens concerned about permissive development occluding public views of the Capitol, the City of Austin undertook a Capitol View Preservation Study (Preservation Study) in 1983 and designated a first phase of Capitol view corridors for priority protection under State Legislation; and

WHEREAS, the Preservation Study's priority list ultimately included two threshold glimpses of the Capitol emanating along the eastern edge of Interstate Highway 35 but no framed or sustained views within the historically African-American core of central east Austin; and

WHEREAS, beginning in 1875, emancipated African-American slaves purchased land from the Joseph W. and George L. Robertson family and settled the area between East Avenue, East 10th Street, East 12th Street and Waller Street, creating a tight-knit Freedmen's community known as Robertson Hill that thrived alongside communities of European immigrants and expanded north, south and east under Segregation, Redlining and three Urban Renewal efforts; and

WHEREAS, that expanded area is the heart of central east Austin and the African American Cultural Heritage District, and includes historically and civically important sites and streets that attract tourists and enhance the residential neighborhoods of which they are a part; and

WHEREAS, many of these sites afford dramatic, framing and sustained views of the Capitol from public spaces; and

WHEREAS, view corridors preserving these public views will not unreasonably diminish the development potential of the properties therein, and

WHEREAS, the Preservation Study invited neighborhood groups to "supplement view preservation efforts by suggesting neighborhood vantage points for future protection;" and

WHEREAS, the Organization of Central East Austin Neighborhoods and its member neighborhood associations support the creation of additional Capitol View Corridors to reaffirm and preserve central east Austin's sense of connection to and inclusion within the greater city that surrounds our State Capitol;

**THEREFORE BE IT RESOLVED:**

The Austin City Council establishes the following Capital View Corridors.

**1. Rosewood Park Corridor at 900 Thompson Street.**

Sweeping view of City skyline, Capitol Dome and UT Tower from pedestrian and driving vantage points west of the City of Austin Housing Authority's Book T. Washington Terraces. View overlooks the tree canopy of Rosewood Park, the first public park open to African Americans in the City of Austin (1929), the Millennium Youth Entertainment Center, the Houston-Tillotson running track, Austin Can Academy and the East Austin Boys & Girls Club.

**Width at origin: 50'**

**Elevation: 531.5' (ground) / 536' (up 4.5')**

**10,000' [1.89 Miles] (average) from Capitol**

**2. Lott Park Corridor—from the basketball court of City of Austin Lott Park, bordered by Catalpa, Curve and Olive Streets.**

Dramatic view of Capitol dome framed by trees. This public park is the former site of the first public school open to African-American children. Anderson High School was located there from 1905-15, and Olive Street School from 1915-1947.

**Width at origin: 15'**

**Elevation 520.5' (ground) / 525' (up 4.5')**

**3,420' [.65 Miles] (average) from Capitol**

**3. Juniper Street Corridor— 1100 block of Juniper Street from Navasota to Lydla to Waller Street.**

Sustained approach affords pedestrians and drivers axial views of the Capitol Dome. Very dramatic views at sunset.

**Width at origin: 10'**

**Elevation 537' (ground) / 542' (up 5')**

**4,570' [.87 Miles] (average) from Capitol**

**4. The Texas State Cemetery Hill Corridor—from walking path atop the northeast hill.**

Pedestrian stationary view of Capitol Dome with Texas State Flag in foreground.

**Width at origin: 6'**

**Elevation 543.5' (ground) / 548' (up 4.5')**

**5,560' [1.05 Miles] from Capitol**

**5. Huston-Tillotson University Corridor—North 100' of the western colonnade of the Jackson Moody Building.**

**Sweeping views of the city skyline with Capitol Dome and Our Lady Guadalupe Church in foreground.**

**Width at origin: 95'**

**Elevation 528' (ground) / 533' (up 5')**

**6705' [1.27 Miles] (average) from Capitol**

**(1) the Rosewood Park Corridor, which encompasses all of the area between two lines:**

**(A) one of which begins at an elevation of 536 feet above sea level at Texas Plane Coordinate X-3124935.14, Y-10071894.51, and extends along a bearing of N 83° 12' 41.0" W for a grid distance of 9985.25 feet to a point 100 feet from the center of the Capitol dome, this point being located at Texas Plane Coordinate X-3115019.90, Y-10073074.83; and**

**(B) the second of which begins at an elevation of 536 feet above sea level at Texas Plane Coordinate X-3124971.10, Y-10071938.59, and extends along a bearing of N 82° 20' 31.4" W for a grid distance of 10015.38 feet to a point 100 feet from the center of the Capitol dome, this point being located at Texas Plane Coordinate X-3115045.05, Y-10073273.23.**

**(2) the Lott Park Corridor, which encompasses all of the area between two lines:**

**(A) one of which begins at an elevation of 525 feet above sea level at Texas Plane Coordinate X-3118224.80, Y-10071960.53, and extends along a bearing of N 70° 52'01.7" W for a grid distance of 3414.46 feet to a point 100 feet from the center of the Capitol dome, this point being located at Texas Plane Coordinate X-3114998.95, Y-10073079.65; and**

**(B) the second of which begins at an elevation of 525 feet above sea level at Texas Plane Coordinate X-3118237.69, Y-10071972.34, and extends along a bearing of N 67° 46'38.8" W for a grid distance of 3422.35 feet to a point 100 feet from the center of the Capitol dome, this point being located at Texas Plane Coordinate X-3115069.54, Y-10073266.69.**

**(3) the Juniper Street Corridor, which encompasses all of the area between two lines:**

**(A) one of which begins at an elevation of 542 feet above sea level at Texas Plane Coordinate X-3119138.95, Y-10071296.72, and extends along a bearing of N 66° 42' 13.5" W for a grid distance of 4514.86 feet to a point 100 feet from the center of the Capitol dome, this point being located at Texas Plane Coordinate X-3114992.18, Y-10073082.28; and**

(B) the second of which begins at an elevation of 542 feet above sea level at Texas Plane Coordinate X-3119245.65, Y-10071254.87, and extends along a bearing of N 64° 16' 31.7" W for a grid distance of 4629.33 feet to a point 100 feet from the center of the Capitol dome, this point being located at Texas Plane Coordinate X-3115075.13, Y-10073264.21.

(4) the Texas State Cemetery Hill Corridor, which encompasses all of the area between two lines:

(A) one of which begins at an elevation of 548 feet above sea level at Texas Plane Coordinate X-3119858.47, Y-10070414.77, and extends along a bearing of N 61° 16' 29.2" W for a grid distance of 5558.91 feet to a point 100 feet from the center of the Capitol dome, this point being located at Texas Plane Coordinate X-3114983.66, Y-10073086.44; and

(B) the second of which begins at an elevation of 548 feet above sea level at Texas Plane Coordinate X-3119860.88, Y-10070420.39, and extends along a bearing of N 59° 16' 34.3" W for a grid distance of 5558.22 feet to a point 100 feet from the center of the Capitol dome, this point being located at Texas Plane Coordinate X-3115082.81, Y-10073260.08.

(5) the Huston-Tillotson University Corridor, which encompasses all of the area between two lines:

(A) one of which begins at an elevation of 533 feet above sea level at Texas Plane Coordinate X-3120573.74, Y-10069381.51, and extends along a bearing of N 56° 28' 04.2" W for a grid distance of 6714.75 feet to a point 100 feet from the center of the Capitol dome, this point being located at Texas Plane Coordinate X-3114976.49, Y-10073090.77; and

(B) the second of which begins at an elevation of 533 feet above sea level at Texas Plane Coordinate X-3120607.53, Y-10069471.48, and extends along a bearing of N 55° 33' 27.6" W for a grid distance of 6692.48 feet to a point 100 feet from the center of the Capitol dome, this point being located at Texas Plane Coordinate X-3115088.28, Y-10073256.59.

#### References:

(1) TEXAS PLANE COORDINATE means the Texas Coordinate System, Central Zone, NAD83, Grid, as defined by the National Geodetic Survey (NGS).

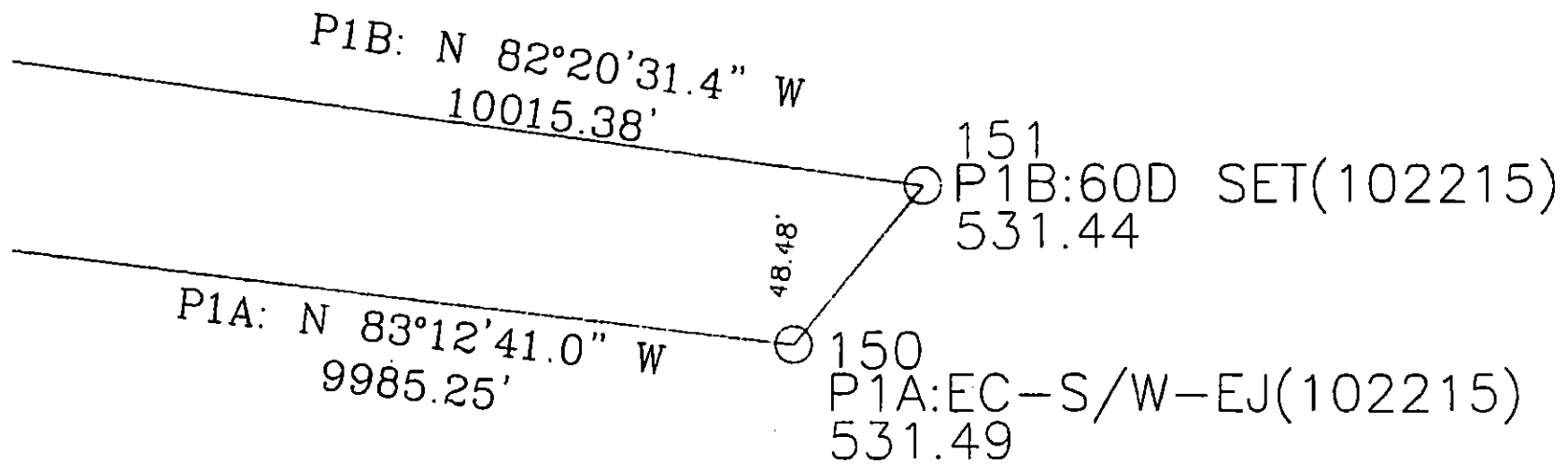
(2) CAPITOL DOME means the part of the State Capitol located more than 653 feet above sea level, with the center of the dome at Texas Plane Coordinate X-3115031.72, Y-10073174.13, computed from the NAD83(1993) position and adjusted by the NGS in



July 1998, according to the NGS Data Sheet for PID - BM0900, with Designation - AUSTIN CAP DOME LIBERTY BASE.

# Report Points

Point	Northing-(Y)	Easting-(X)	Elevation-(Z)	Description
1	10073174.12	3115031.72	653.00	CENTER CAPITOL DOME NGS-NAD83
150	10071894.51	3124935.14	531.49	P1A:EC-S/W-EJ(102215)
151	10071938.59	3124971.10	531.44	P1B:60D SET(102215)
152	10073074.83	3115019.90	653.00	P1A:CAPITOL DOME
153	10073273.23	3115045.05	653.00	P1B:CAPITOL DOME
154	10071296.72	3119138.95	536.78	P3A:MAGNAIL FND-CONC-S/W(102215)
155	10071254.87	3119245.65	537.32	P3B:EC-S/W-PI(102215)
156	10073082.28	3114992.18	653.00	P3A:CAPITOL DOME
157	10073264.21	3115075.13	653.00	P3B:CAPITOL DOME
158	10071960.53	3118224.80	520.50	P2A:BBALL-FOULLINE-EJ(102215)
159	10071972.34	3118237.69	520.27	P2B:BBALL-BASELINE-EJ(102215)
160	10073079.65	3114998.95	653.00	P2A:CAPITOL DOME
161	10073266.69	3115069.54	653.00	P2B:CAPITOL DOME
162	10069381.51	3120573.74	527.90	P5A:EC-S/W-PI
163	10069549.65	3120636.89	528.02	P5B:REF:83.5' O/S-EC-S/W-POL(102215)
164	10069471.48	3120607.53	527.97	P5B:CALC:EC-S/W-PI(102215)
165	10073090.77	3114976.49	653.00	P5A:CAPITOL DOME
166	10073256.59	3115088.28	653.00	P5B:CAPITOL DOME
167	10070414.77	3119858.47	543.61	P4A:EC-S/W-POL(102215)
168	10070420.39	3119860.88	543.22	P4B:EC-S/W-POL(102215)
169	10073086.44	3114983.66	653.00	P4A:CAPITOL DOME
170	10073260.08	3115082.81	653.00	P4B:CAPITOL DOME



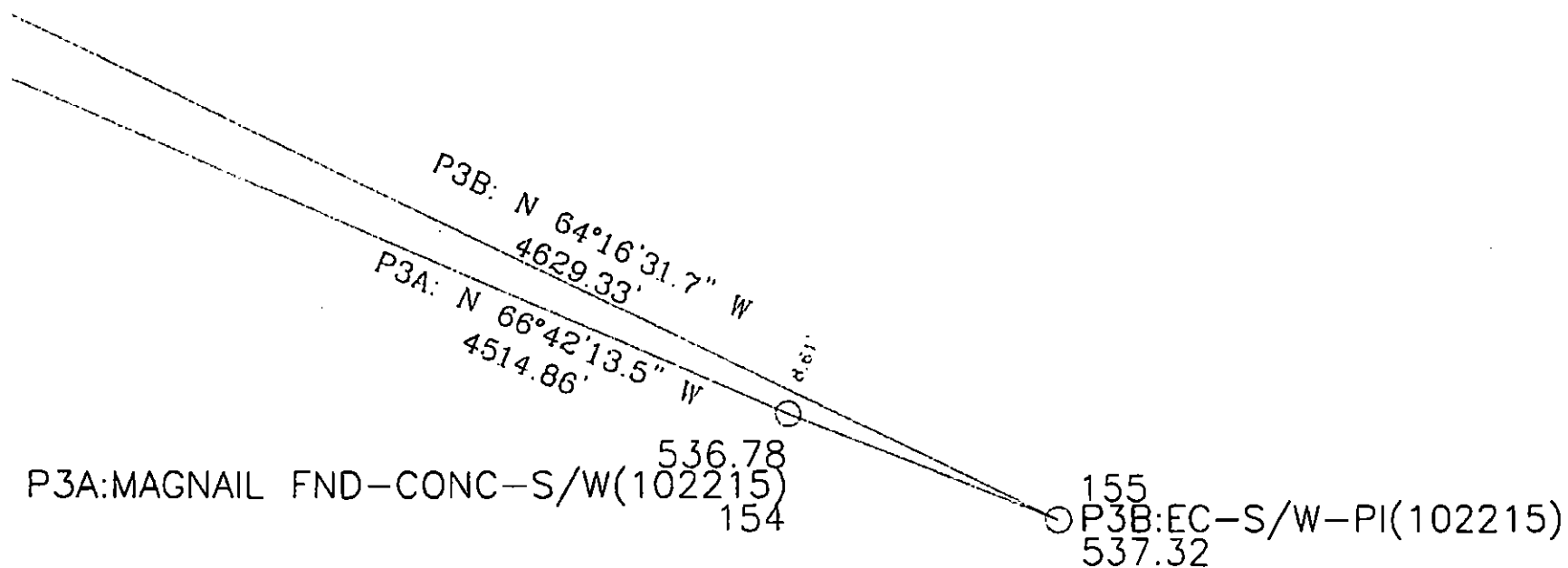
Rosewood Park

P2B: N  $67^{\circ}46'38.8''$  W  
3422.35'

P2A: N  $70^{\circ}52'01.7''$  W  
3414.46'

159  
P2B:BBALL-BASELINE-EJ(102215)  
520.27  
158  
P2A:BBALL-FOULLINE-EJ(102215)  
520.50

Lott Park



Juniper St.

P4B: N 59°16'34.3" W  
5558.22'  
P4A: N 61°16'29.2" W  
5558.91'

168

P4B:EC-S/W-POL(102215)

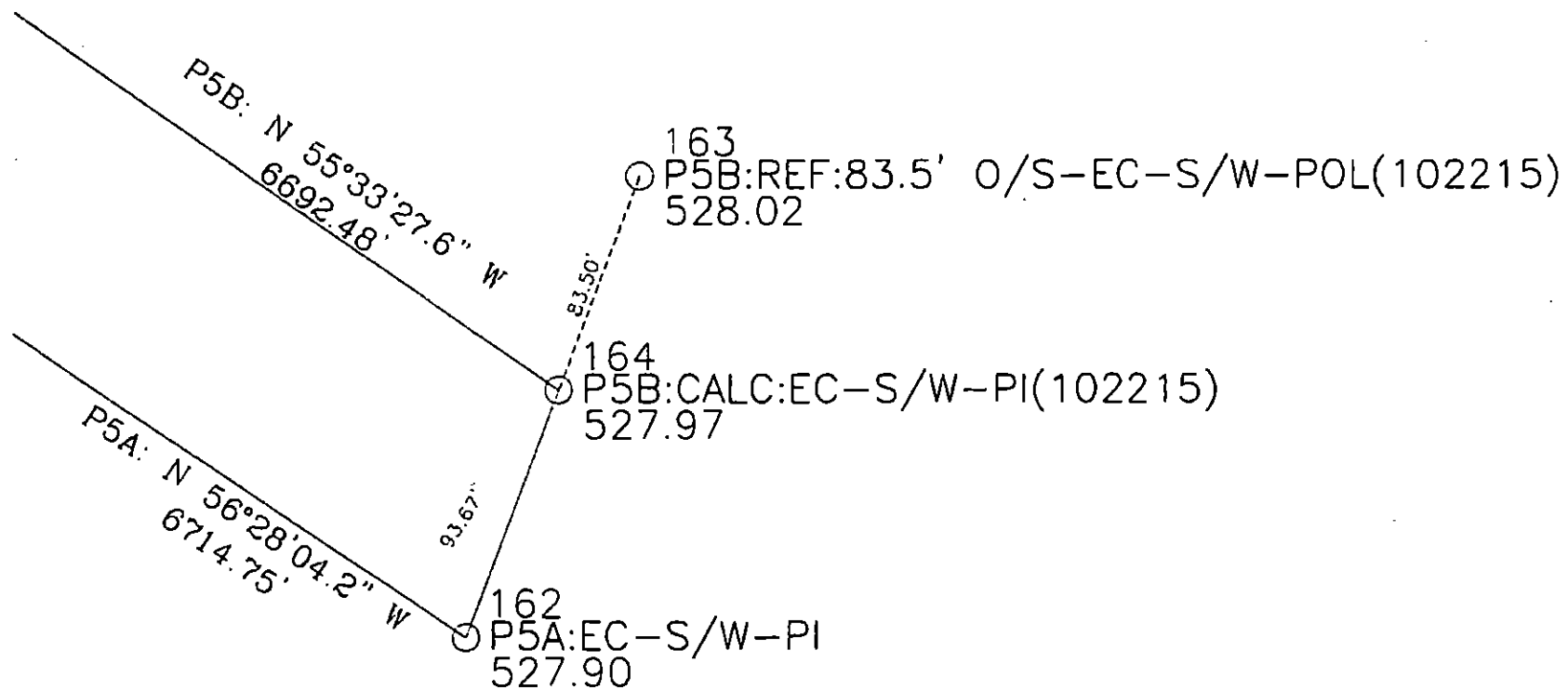
543.22

6.09'  
167

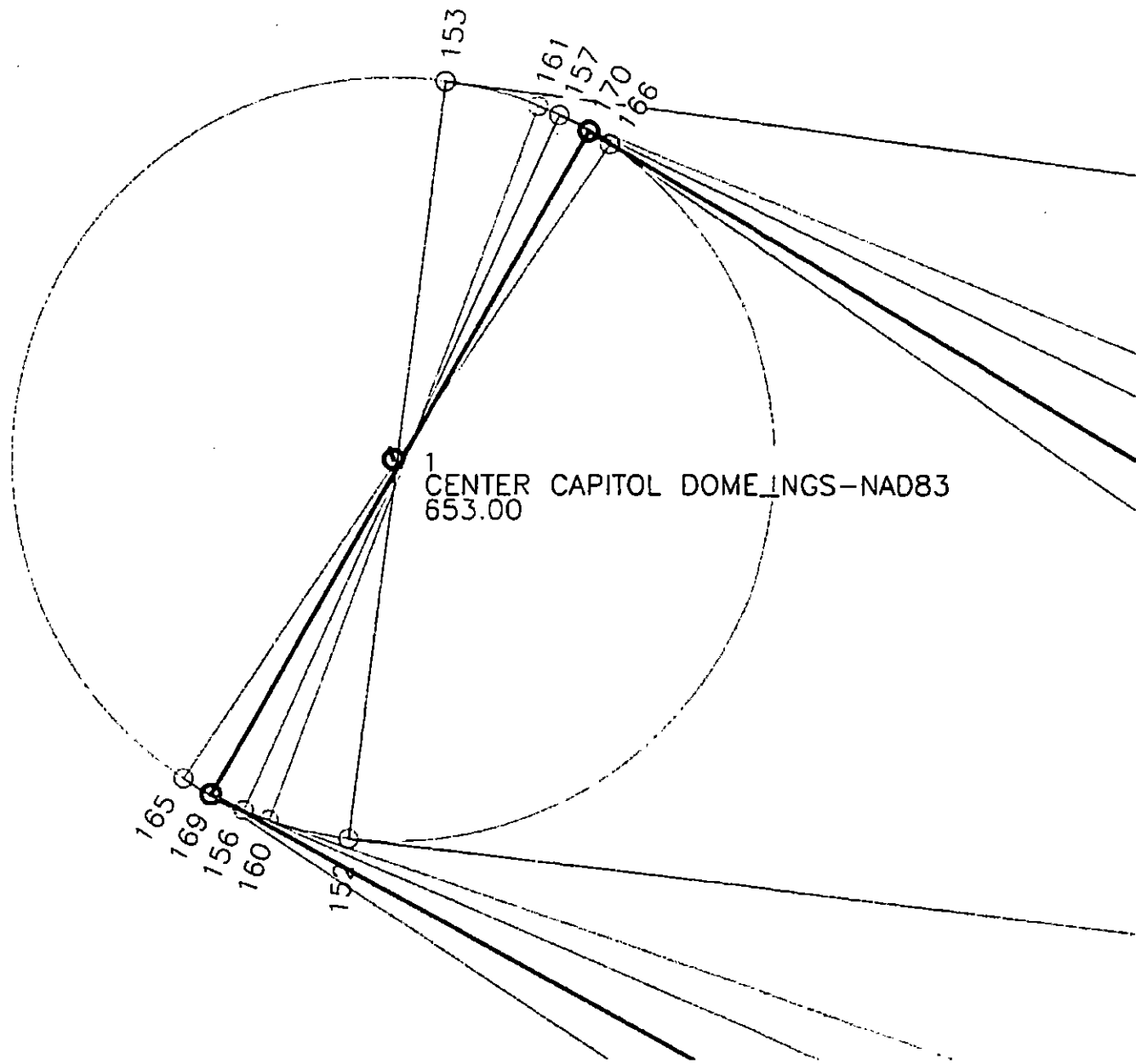
P4A:EC-S/W-POL(102215)

543.61

Texas State Cemetery



Huston-Tillotson University





\_\_\_\_\_

MISSION - ESTABLISH AN AMERICAN  
NEW, IT PAID A GOOD PRICE  
ON THE LOCATION OF THE  
PROPERTY IN THE NEW YORK  
CITY.

cloudy, breezy

Ep<sup>a</sup> Wundt

Th	1	D	la
----	---	---	----

Pr. A. E. 12

Set GPS base on a new point  
behind Flour & Grain Child's bldg  
at 800 Thompson St. in  
the Austin

F. n.:	CAPULEN 12
--------	------------

1. = 1212.1000 1.224

34.5

[illegible]
$$\text{for } \frac{1}{2} \leq \alpha \leq 1, \quad \frac{1}{2} \leq \beta \leq 1, \quad \alpha + \beta \leq 2$$

W	1	2	3	4	5	6	7	8	9	10	11	12	13	14	15	16	17	18	19	20	21	22	23	24	25	26	27	28	29	30	31	32	33	34	35	36	37	38	39	40	41	42	43	44	45	46	47	48	49	50	51	52	53	54	55	56	57	58	59	60	61	62	63	64	65	66	67	68	69	70	71	72	73	74	75	76	77	78	79	80	81	82	83	84	85	86	87	88	89	90	91	92	93	94	95	96	97	98	99	100	101	102	103	104	105	106	107	108	109	110	111	112	113	114	115	116	117	118	119	120	121	122	123	124	125	126	127	128	129	130	131	132	133	134	135	136	137	138	139	140	141	142	143	144	145	146	147	148	149	150	151	152	153	154	155	156	157	158	159	160	161	162	163	164	165	166	167	168	169	170	171	172	173	174	175	176	177	178	179	180	181	182	183	184	185	186	187	188	189	190	191	192	193	194	195	196	197	198	199	200	201	202	203	204	205	206	207	208	209	210	211	212	213	214	215	216	217	218	219	220	221	222	223	224	225	226	227	228	229	230	231	232	233	234	235	236	237	238	239	240	241	242	243	244	245	246	247	248	249	250	251	252	253	254	255	256	257	258	259	260	261	262	263	264	265	266	267	268	269	270	271	272	273	274	275	276	277	278	279	280	281	282	283	284	285	286	287	288	289	290	291	292	293	294	295	296	297	298	299	300	301	302	303	304	305	306	307	308	309	310	311	312	313	314	315	316	317	318	319	320	321	322	323	324	325	326	327	328	329	330	331	332	333	334	335	336	337	338	339	340	341	342	343	344	345	346	347	348	349	350	351	352	353	354	355	356	357	358	359	360	361	362	363	364	365	366	367	368	369	370	371	372	373	374	375	376	377	378	379	380	381	382	383	384	385	386	387	388	389	390	391	392	393	394	395	396	397	398	399	400	401	402	403	404	405	406	407	408	409	410	411	412	413	414	415	416	417	418	419	420	421	422	423	424	425	426	427	428	429	430	431	432	433	434	435	436	437	438	439	440	441	442	443	444	445	446	447	448	449	450	451	452	453	454	455	456	457	458	459	460	461	462	463	464	465	4
---	---	---	---	---	---	---	---	---	---	----	----	----	----	----	----	----	----	----	----	----	----	----	----	----	----	----	----	----	----	----	----	----	----	----	----	----	----	----	----	----	----	----	----	----	----	----	----	----	----	----	----	----	----	----	----	----	----	----	----	----	----	----	----	----	----	----	----	----	----	----	----	----	----	----	----	----	----	----	----	----	----	----	----	----	----	----	----	----	----	----	----	----	----	----	----	----	----	----	----	-----	-----	-----	-----	-----	-----	-----	-----	-----	-----	-----	-----	-----	-----	-----	-----	-----	-----	-----	-----	-----	-----	-----	-----	-----	-----	-----	-----	-----	-----	-----	-----	-----	-----	-----	-----	-----	-----	-----	-----	-----	-----	-----	-----	-----	-----	-----	-----	-----	-----	-----	-----	-----	-----	-----	-----	-----	-----	-----	-----	-----	-----	-----	-----	-----	-----	-----	-----	-----	-----	-----	-----	-----	-----	-----	-----	-----	-----	-----	-----	-----	-----	-----	-----	-----	-----	-----	-----	-----	-----	-----	-----	-----	-----	-----	-----	-----	-----	-----	-----	-----	-----	-----	-----	-----	-----	-----	-----	-----	-----	-----	-----	-----	-----	-----	-----	-----	-----	-----	-----	-----	-----	-----	-----	-----	-----	-----	-----	-----	-----	-----	-----	-----	-----	-----	-----	-----	-----	-----	-----	-----	-----	-----	-----	-----	-----	-----	-----	-----	-----	-----	-----	-----	-----	-----	-----	-----	-----	-----	-----	-----	-----	-----	-----	-----	-----	-----	-----	-----	-----	-----	-----	-----	-----	-----	-----	-----	-----	-----	-----	-----	-----	-----	-----	-----	-----	-----	-----	-----	-----	-----	-----	-----	-----	-----	-----	-----	-----	-----	-----	-----	-----	-----	-----	-----	-----	-----	-----	-----	-----	-----	-----	-----	-----	-----	-----	-----	-----	-----	-----	-----	-----	-----	-----	-----	-----	-----	-----	-----	-----	-----	-----	-----	-----	-----	-----	-----	-----	-----	-----	-----	-----	-----	-----	-----	-----	-----	-----	-----	-----	-----	-----	-----	-----	-----	-----	-----	-----	-----	-----	-----	-----	-----	-----	-----	-----	-----	-----	-----	-----	-----	-----	-----	-----	-----	-----	-----	-----	-----	-----	-----	-----	-----	-----	-----	-----	-----	-----	-----	-----	-----	-----	-----	-----	-----	-----	-----	-----	-----	-----	-----	-----	-----	-----	-----	-----	-----	-----	-----	-----	-----	-----	-----	-----	-----	-----	-----	-----	-----	-----	-----	-----	-----	-----	-----	-----	-----	-----	-----	-----	-----	-----	-----	-----	-----	-----	-----	-----	-----	-----	-----	-----	-----	-----	-----	-----	-----	-----	-----	-----	-----	-----	-----	-----	-----	-----	-----	-----	-----	-----	-----	-----	-----	-----	-----	-----	---

John S. Van No



[illegible]

38

[illegible]
$$a_{g_2}/z_2$$

10-3 0

33/580

X 2000 2000

Original A 1/2

2000 2000

1595 0.1

1/2

2000 2000

1595 0.1

2000 2000

1/2

2000 2000

1595 0.1

2000 2000

1595 0.1

2000 2000

1595 0.1

2000 2000

1595 0.1

2000 2000

1595 0.1

2000 2000

1595 0.1

2000 2000

1595 0.1

2000 2000

olive st.

Curve 150

2. Left Park Corridor

34/330

captain Hill

Volunteer

Admiral F.L.A.

SB (Callington)

POB. 100

BB.5 103

104

SB

2. Skating Br. L.

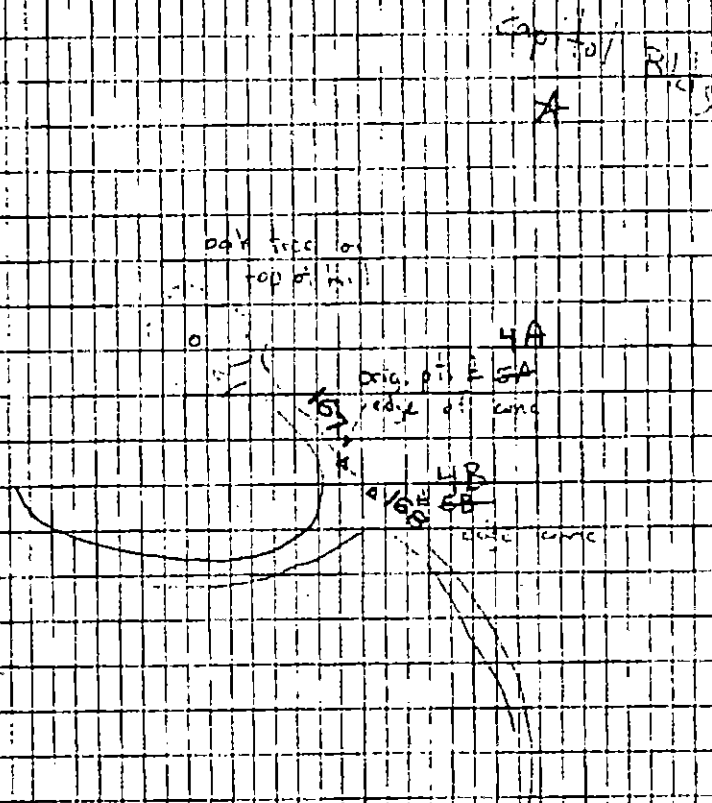
(MUTUAL - THE MUSEUM - 1000)

S. Huston-Tillison University  
Correlation

10-21-15

## Texas State Cemetery site

tied two points on edge of  
 conc. ~~in~~ wall's were near top  
 of hill East side of road.  
 Pts about 6 ft apart



Corning St.

4. Texas State Cemetery Cultural

36/380

10-21-15

File - C. P. A. Loring, Nov. 14-22-1903  
in case of death on East side  
of Massachusetts at Olive St.

FILE: CAPVIEW V2

PO 3000

LEICA GPS SET-UP PAGE (SMART) 10/25/15

FILE: CAPVIEW V2

10/25/15

PAGE: RTN-REF. STA. 2292

B. O'HARA

B. O'HARA

B. O'HARA

CHECK SHOTS: 3A &amp; 3B (IN -DT. PARK)

K-22-1003 (C.O.A. MON. 4" P.S.B.)

DISC IN SIDEWALK @ INT. OF

NAVASOTA ST. &amp; OLIVE ST., 2A (CORNER

OF LYDIA ST. &amp; JUNIPER ST., 2B (CORNER

OF JUNIPER ST. &amp; NAVASOTA ST.) 5A &amp;

5B (STATE CEMETARY) 9A &amp; 9B

(HUSTON-TILLOTSON CAMPUS) PT. #1

(BOYS &amp; GIRLS CLUB OF AUSTIN) 3N1A &amp;

3N1B (THOMPSON ST. BOYS &amp; GIRLS

CLUB) PT. #6 (ALLEY BEHIND TEXAS

STATE TEACHERS ASSN.) PT. #3 (TOP

PARKING GARAGE @ 12TH &amp; LAVACA)

PT. #TC184 (E. SIDE OF INT. OF 12TH ST.

&amp; LAVACA ST.) PT. #3 (S.W. CORNER OF

INTERSECTION OF 17TH ST. &amp; GUADALUPE ST.)

PT. #TC183 (IN D.C. OF MEDIAN; W. ST

SIDE OF INT. OF 17TH ST. &amp; GUADALUPE ST.)

PT. #K-22-1004 PT. #K-22-1001 INT. OF

THOMPSON, HARGRAVE &amp; Ross - 1000

E. AUSTIN CAPITAL VIEW

CORRIDORS

37/350

10/25/15

B. O'HARA

B. O'HARA

J. O'HARA