

**ORDINANCE NO. 20170615-058**

**AN ORDINANCE AMENDING CITY CODE SECTION 12-4-64(D) TO ESTABLISH A MAXIMUM SPEED LIMIT OF 45 MILES PER HOUR ON A PORTION OF METROPOLIS DRIVE.**

**BE IT ORDAINED BY THE CITY COUNCIL OF THE CITY OF AUSTIN:**

**PART 1.** City Code Section 12-4-64(D) (*Table of Speed Limits*) is amended to add:

Metropolis Drive from U.S. Highway 183 to Burleson Road. (45 MPH Speed Limit)

**PART 2.** The amendments made in this ordinance are based on the results of a traffic engineering investigation, or "speed study," attached as Exhibit "A".

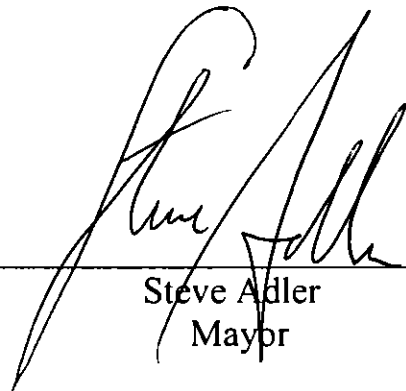
**PART 3.** The amendments made in this ordinance shall be incorporated in alphabetical order and the existing entries reordered accordingly.

**PART 4.** This ordinance takes effect on June 26, 2017.

**PASSED AND APPROVED**

\_\_\_\_\_, June 15, 2017

§  
§  
§



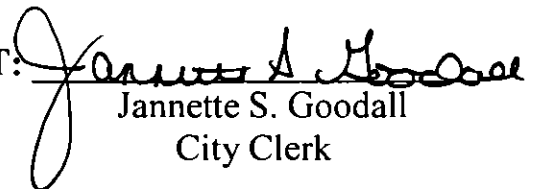
Steve Adler  
Mayor

**APPROVED:**



Anne L. Morgan  
City Attorney

**ATTEST:**



Jannette S. Goodall  
City Clerk

## EXHIBIT A



### MEMORANDUM

**To:** Traffic Study Files

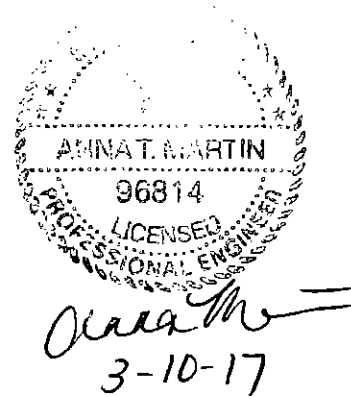
**From:** Anna Martin, P.E., PTOE, South Austin Engineer  
Traffic Engineering Division  
Austin Transportation Department

**Date:** March 9, 2017

**Subject:** SPEED ZONE INVESTIGATION

**Location:** Metropolis Drive – Burleson Road to US Highway 183

**Date(s) of Previous Investigation:** None

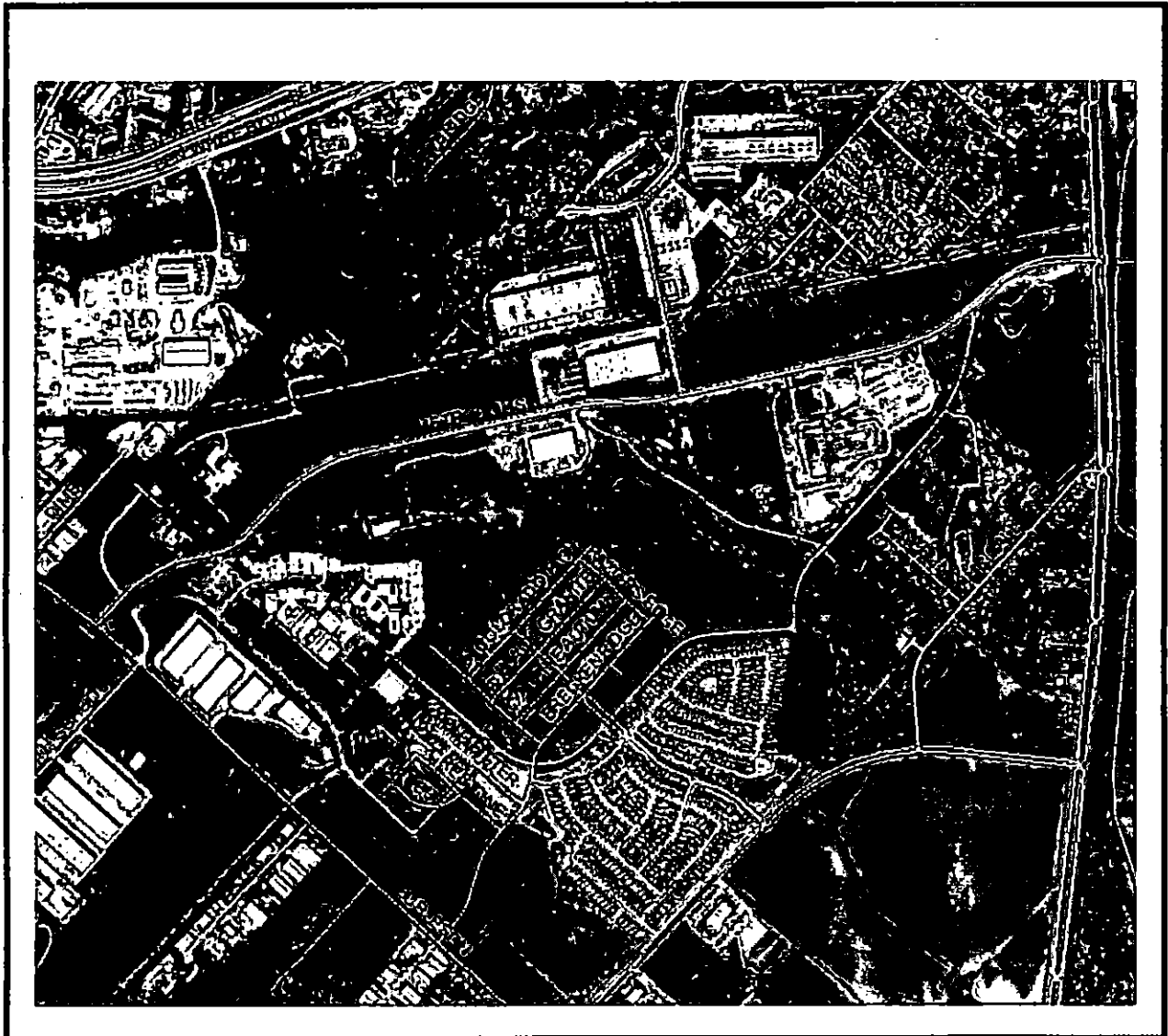


A Traffic Engineering Investigation has been conducted by the Traffic Engineering Division to determine the appropriate speed limit on Metropolis Drive from Burleson Road to US Highway 183. Figure 1 represents a map of the study area. A speed limit had not been established by an engineering study; therefore the prima facie speed limit is 30 miles per hour (mph).

#### Location Conditions:

Metropolis Drive is a four-lane roadway with a center left turn lane that generally runs in an east-west direction between Burleson Road and US Highway 183. A Veterans Outpatient Clinic, Central Texas Food Bank, and several other businesses are adjacent to Metropolis Drive.

**Figure 1**



### Speed and Volume Data:

A speed study was conducted in accordance with the Texas Procedures for Establishing Speed Zones. Speed and volume data were collected in January 2017 to determine the appropriate posted speed limit for Metropolis Drive. In January 2017, an average of over 5,100 vehicles per day were recorded on Metropolis Drive from Burleson Road to US Highway 183.

As summarized in Table 1, the 85<sup>th</sup> percentile speed on the eastbound and westbound lanes was recorded in the range of 49 mph to 53 mph. The average 85<sup>th</sup> percentile speed on Metropolis Drive was recorded at 51 mph for the eastbound and westbound lanes of traffic.

**Table 1:**

Block Number	Street Segment	Existing Speed Limit	85% Speed		Traffic Volumes
			EB	WB	
6900	From Burleson Rd. to Metlink Drive	None	50	49	5627
7900	From Metlink Drive to US Highway 183	None	52	53	4589

Figure 2 presents a map of the study area and the proposed speed limit based on the collected data and analysis.

**Figure 2**



Austin Transportation Department  
Speed Zone Map  
Metropolis Drive

**General Comments:**

Metropolis Drive provides a uniform design of a four-lane arterial with a center left turn lane from Burleson Road to US Highway 183 and is approximately 1.7 miles long. Adjacent land uses comprise of large office complexes such as a data center, VA outpatient clinic, Capital Area Food Bank and undeveloped land on both sides of the roadway.

Based on the analysis of this information, it is my engineering judgement that the speed limit on Metropolis Drive should be 45 miles per hour from Burleson Road to US Highway 183.

Respectfully submitted,



3-10-17

Anna Martin, P.E., PTOE      Date

South Austin Engineer

Traffic Engineering Division

AUSTIN TRANSPORTATION DEPARTMENT