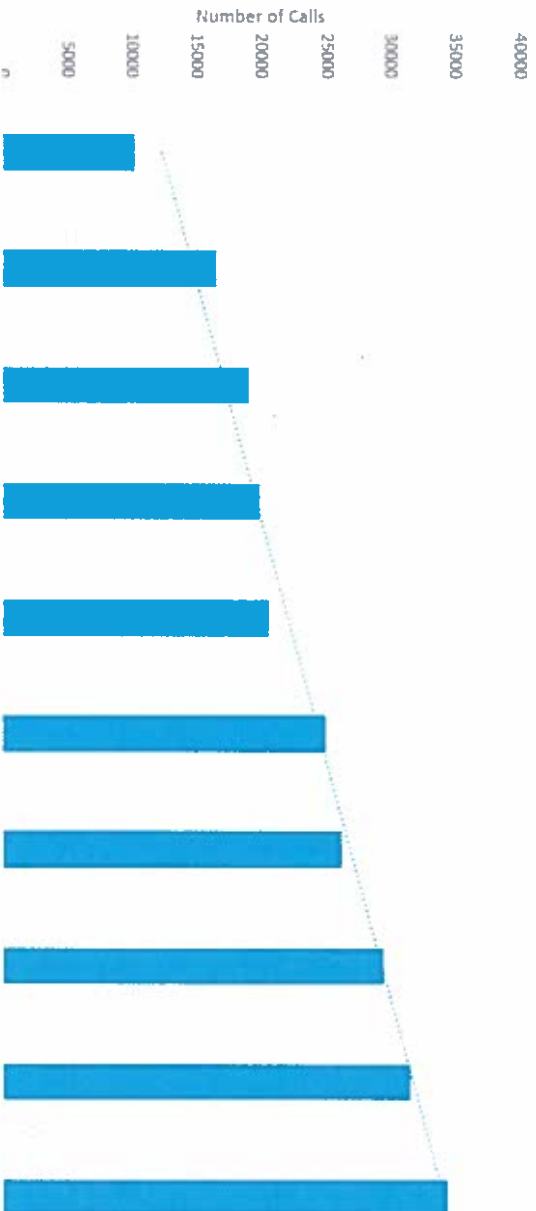


Citywide EDP Count of Calls: 10 Years (2007-2016)

AUSTIN POLICE DEPARTMENT DISCLAIMER: Understanding the following conditions will allow you to get the most out of the data provided. Data from CAD is based on a monthly download. This data includes the record for the PRIMARY unit responding to the incident. This data includes both self initiated and dispatched calls for service. Due to methodological differences in data collection, different data sources may produce different results. The Austin Police Department does not assume any liability for any decision made or action taken or not taken by the recipient in reliance upon any information or data provided. Source: CAD/Datawarehouse - 8/18/2017, All calls with final call types listed below between 1/1/2007 to 12/31/2016.

Count of CALL #	Year										Grand Total
Call Type	2007	2008	2009	2010	2011	2012	2013	2014	2015	2016	Grand Total
+ Check Welfare	6482	12741	14706	14727	14411	17599	18422	20931	22319	24641	166979
+ Emotionally Disturbed Person (EDP)	2727	2699	2921	3341	3850	4152	3901	4259	4467	4593	36910
+ Emergency Detention	1005	1033	1482	1822	2261	3329	3989	4339	4768	5185	29213
Grand Total	10214	16473	19109	19890	20522	25080	26312	29529	31554	34419	233102

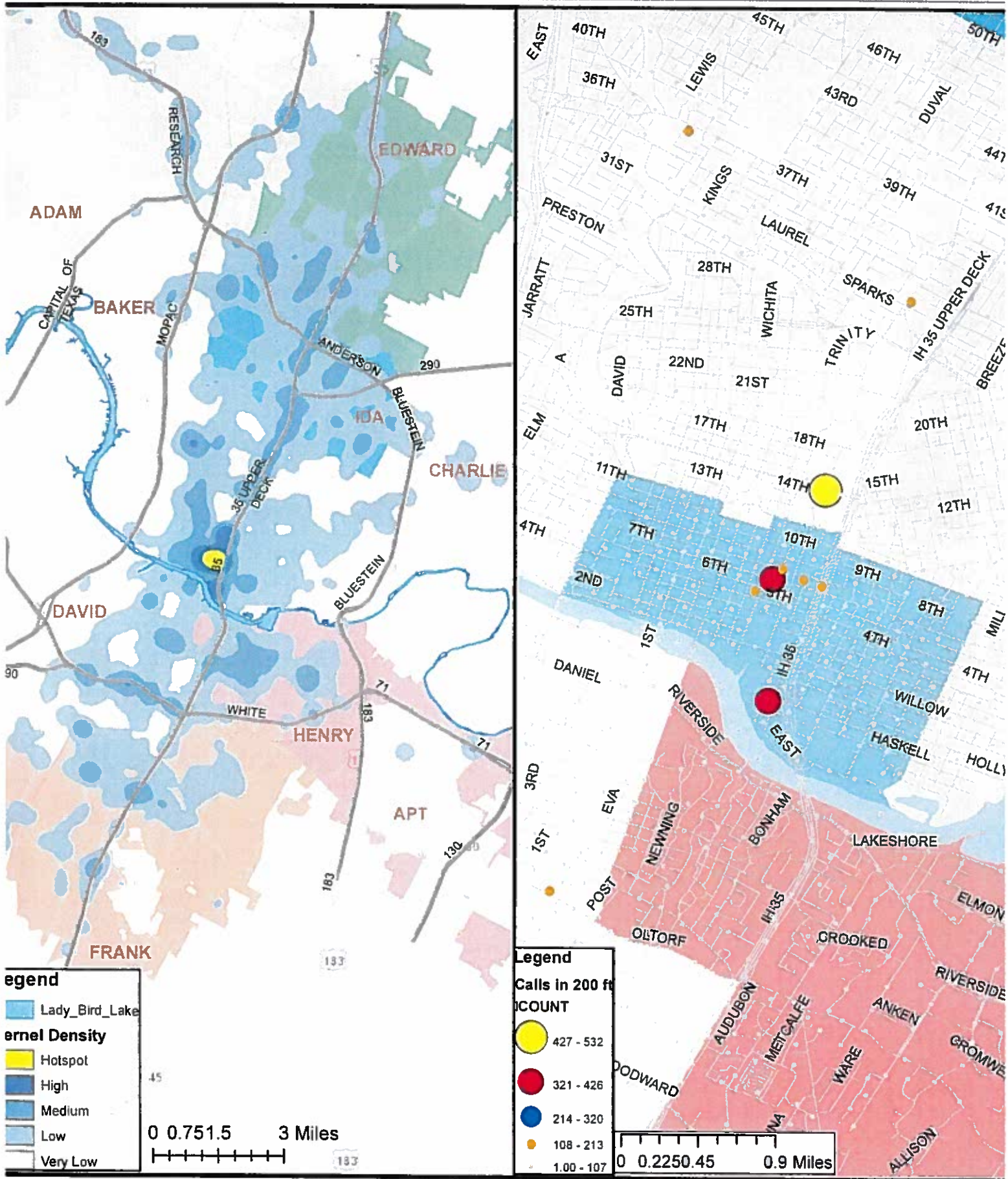
Citywide EDP/Check Welfare Calls for Service
(2007-2016)





EMD/EDP Calls for Service

August 15, 2016-2017



This map was created by the Austin Police Department's Crime Analysis Unit for the sole purpose of displaying the geographic location of crime and crime data. No warranty is made with regards to its accuracy, completeness or usage.

Austin Police Department

SECTOR_NAME

APT DAVID GEORGE
 BAKER EDWARD HENRY

