

1404 W 6TH ST



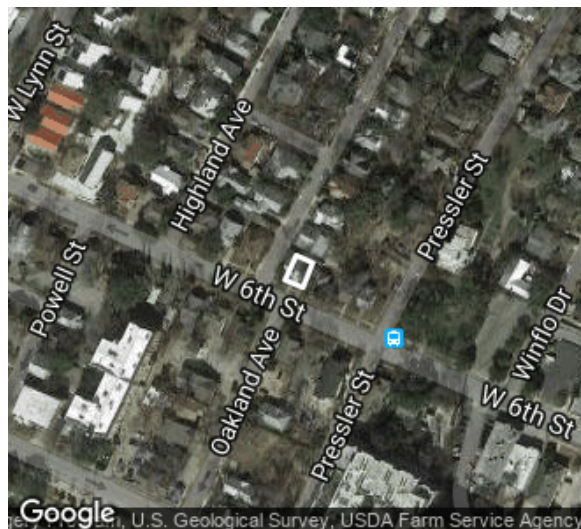
Oct 2017

1404 W 6TH ST



Oct 2017

# 1406 W 6TH ST



Date recorded: Oct 2017

Image ID: 7967

Coordinates: 30.2743006, -97.7606987

## IDENTIFICATION

CAD Parcel ID	106795
Legal description	E 65 FT OF W 70 FT OF LOT 18 BLK A OLT 3 DIV Z TERRACE PARK
Acreage	0.1
Building name	None
Identification notes	None

## INTEGRITY

Alterations	Porch enclosed, Porch altered
Additions	Side addition
Integrity notes	None

## HISTORY

History notes	None
---------------	------

## CLASSIFICATION

Current use	Commercial
Original use	Residential
Year built	1915
Source for year built	West Line National Register Historic District nomination
Type	Single-family house
Form	Bungalow
Stylistic influences	Craftsman

## PRIOR DOCUMENTATION

Prior designations	Contributing to a NRHP district
--------------------	---------------------------------

## LOCAL RECOMMENDATIONS

Recommended local designations	Recommended contributing to a local historic district
Local recommendation notes	None

## DESCRIPTION

Stories	2
Roof form	Side-gabled
Exterior wall materials	Wood, Brick

1406 W 6TH ST



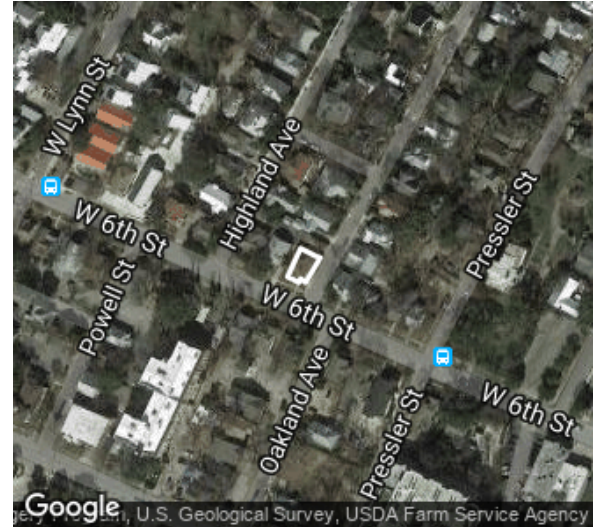
Oct 2017

1406 W 6TH ST



Oct 2017

# 1410 W 6TH ST



Date recorded: Oct 2017

Image ID: 7972

Coordinates: 30.2744221, -97.7609721

## IDENTIFICATION

CAD Parcel ID	106691
Legal description	50 X 105 FT OLT 3 DIVISION Z
Acreage	0.1205
Building name	None
Identification notes	None

## INTEGRITY

Alterations	Porch enclosed
Additions	Rear addition
Integrity notes	None

## HISTORY

History notes	None
---------------	------

## CLASSIFICATION

Current use	Commercial
Original use	Residential
Year built	1925
Source for year built	West Line National Register Historic District nomination
Type	Single-family house
Form	Bungalow
Stylistic influences	Classical Revival

## PRIOR DOCUMENTATION

Prior designations	Non-contributing to a NRHP district
--------------------	-------------------------------------

## LOCAL RECOMMENDATIONS

Recommended local designations	Recommended contributing to a local historic district
Local recommendation notes	Previous non-contributing designation based on different integrity standards

## DESCRIPTION

Stories	1
Roof form	Hipped
Exterior wall materials	Stucco, Wood

1410 W 6TH ST



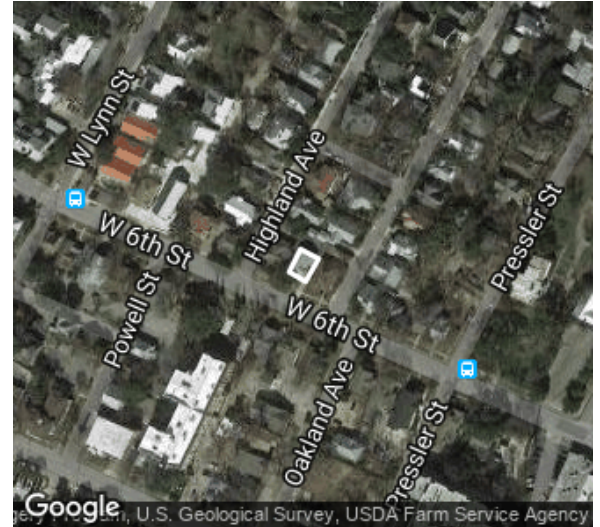
Oct 2017

1410 W 6TH ST



Oct 2017

# 1412 W 6TH ST



Date recorded: Oct 2017

Image ID: 7974

Coordinates: 30.2744915, -97.7611178

## IDENTIFICATION

CAD Parcel ID	106692
Legal description	50 X 101 FT OLT 3 DIVISION Z
Acreage	0.1159
Building name	None
Identification notes	None

## INTEGRITY

Alterations	Porch enclosed
Additions	Side addition
Integrity notes	None

## HISTORY

History notes	None
---------------	------

## CLASSIFICATION

Current use	Commercial
Original use	Residential
Year built	1920
Source for year built	West Line National Register Historic District nomination
Type	Single-family house
Form	Bungalow
Stylistic influences	Craftsman

## PRIOR DOCUMENTATION

Prior designations	Contributing to a NRHP district
--------------------	---------------------------------

## LOCAL RECOMMENDATIONS

Recommended local designations	Recommended contributing to a local historic district
Local recommendation notes	None

## DESCRIPTION

Stories	1
Roof form	Side-gabled
Exterior wall materials	Stucco, Wood

1412 W 6TH ST



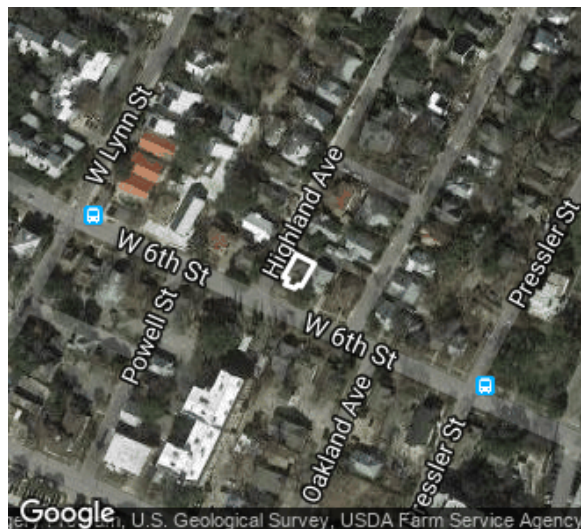
Oct 2017

1412 W 6TH ST



Oct 2017

# 1414 W 6TH ST



Date recorded: Oct 2017

Image ID: 7985

Coordinates: 30.2745447, -97.7612627

## IDENTIFICATION

CAD Parcel ID	106693
Legal description	50 X 112.2 FT OLT 3 DIVISION Z
Acreage	0.1286
Building name	None
Identification notes	None

## INTEGRITY

Alterations	None visible
Additions	Rear addition
Integrity notes	None

## HISTORY

History notes	None
---------------	------

## CLASSIFICATION

Current use	Commercial
Original use	Residential
Year built	1925
Source for year built	West Line National Register Historic District nomination
Type	Single-family house
Form	Massed plan
Stylistic influences	Craftsman

## PRIOR DOCUMENTATION

Prior designations	Contributing to a NRHP district
--------------------	------------------------------------

## LOCAL RECOMMENDATIONS

Recommended local designations	Recommended contributing to a local historic district
Local recommendation notes	None

## DESCRIPTION

Stories	1
Roof form	Cross-gabled
Exterior wall materials	Stucco, Wood

1414 W 6TH ST



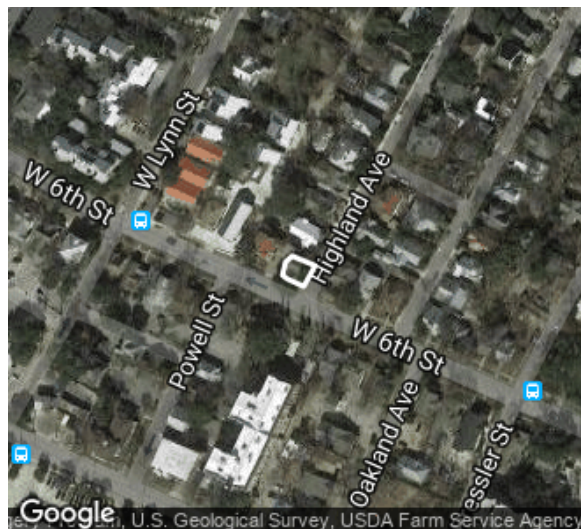
Oct 2017

1414 W 6TH ST



Oct 2017

# 1500 W 6TH ST



Date recorded: Oct 2017

Image ID: 7983

Coordinates: 30.2745787, -97.7615504

## IDENTIFICATION

CAD Parcel ID	106628
Legal description	E 60 FT OF LOT 18 BLK B OLT 3 DIV Z TERRACE PARK
Acreage	0.0882
Building name	None
Identification notes	None

## INTEGRITY

Alterations	None visible
Additions	Rear addition
Integrity notes	None

## HISTORY

History notes	None
---------------	------

## CLASSIFICATION

Current use	Commercial
Original use	Residential
Year built	1925
Source for year built	West Line National Register Historic District nomination
Type	Duplex house
Form	Massed plan
Stylistic influences	Classical Revival

## PRIOR DOCUMENTATION

Prior designations	Contributing to a NRHP district
--------------------	------------------------------------

## LOCAL RECOMMENDATIONS

Recommended local designations	Recommended contributing to a local historic district
Local recommendation notes	None

## DESCRIPTION

Stories	1
Roof form	Front-gabled
Exterior wall materials	Wood

1500 W 6TH ST



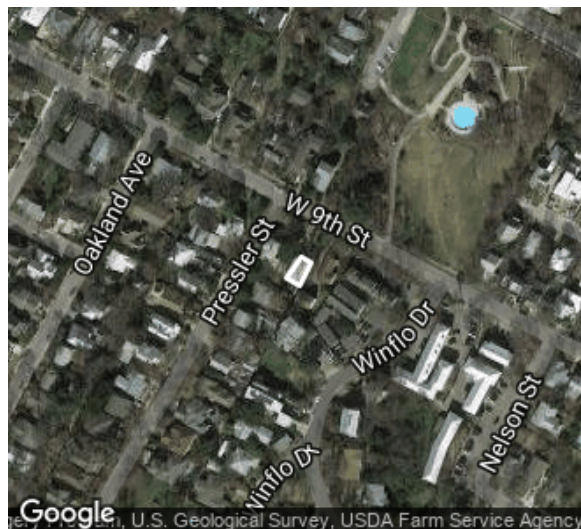
Oct 2017

1500 W 6TH ST



Oct 2017

# 1401 W 9TH ST



Date recorded: Oct 2017

Image ID: 7860

Coordinates: 30.2761002, -97.7584042

## IDENTIFICATION

CAD Parcel ID	106753
Legal description	ACR 0.3127 OF OLT 3 DIVISION Z HISTORIC/HOMESTEAD
Acreage	0.3127
Building name	None
Identification notes	Listed as 1403B in West Line National Register Historic District

## CLASSIFICATION

Current use	Residential
Original use	Residential
Year built	1981
Source for year built	Building permit
Type	Back house
Form	Massed plan
Stylistic influences	No stylistic influences visible

## DESCRIPTION

Stories	2
Roof form	Hipped
Exterior wall materials	Wood

## INTEGRITY

Alterations	None visible
Additions	None visible
Integrity notes	None

## HISTORY

History notes	None
---------------	------

## PRIOR DOCUMENTATION

Prior designations	Non-contributing to West Line National Register Historic District
--------------------	---

## LOCAL RECOMMENDATIONS

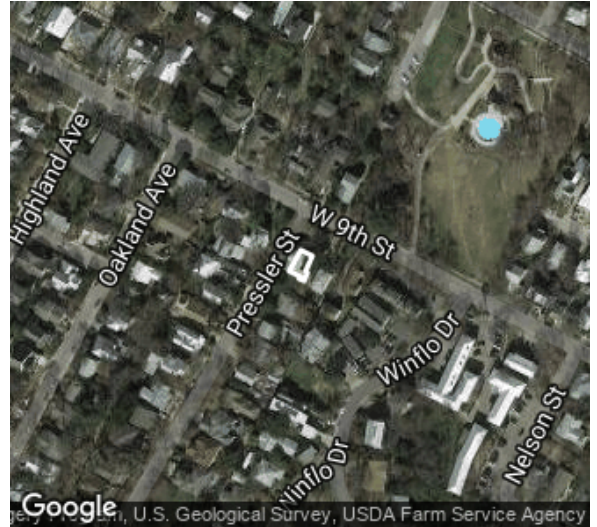
Recommended local designations	Recommended non-contributing to a local historic district
Local recommendation notes	None

1401 W 9TH ST



Oct 2017

# 1403 W 9TH ST



Date recorded: Oct 2017

Image ID: 7857

Coordinates: 30.2762008, -97.7585503

## IDENTIFICATION

CAD Parcel ID	106753
Legal description	ACR 0.3127 OF OLT 3 DIVISION Z HISTORIC/HOMESTEAD
Acreage	0.3127
Building name	Ben Pillow House
Identification notes	None

## CLASSIFICATION

Current use	Residential
Original use	Residential
Year built	1878
Source for year built	West Line National Register Historic District nomination
Type	Single-family house
Form	Massed plan
Stylistic influences	Italianate

## DESCRIPTION

Stories	2
Roof form	Hipped
Exterior wall materials	Wood

## INTEGRITY

Alterations	None visible
Additions	Rear addition
Integrity notes	None

## HISTORY

History notes	None
---------------	------

## PRIOR DOCUMENTATION

Prior designations	Contributing to a NRHP district, Local landmark
--------------------	--

## LOCAL RECOMMENDATIONS

Recommended local designations	Recommended contributing to a local historic district
Local recommendation notes	None

1403 W 9TH ST



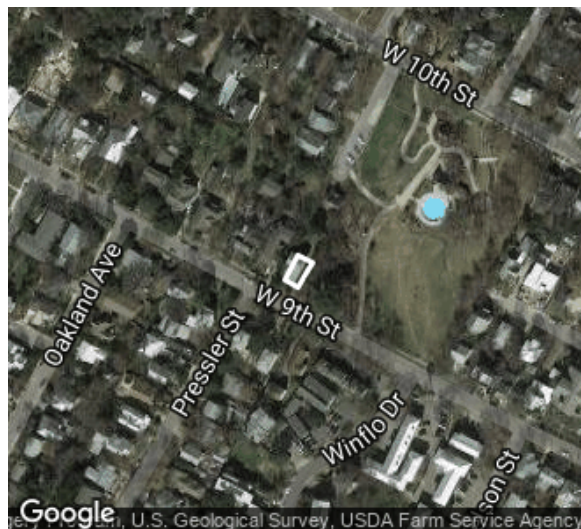
Oct 2017

1403 W 9TH ST



Oct 2017

# 1404 W 9TH ST



Date recorded: Oct 2017

Image ID: 8078

Coordinates: 30.2765896, -97.7582301

## IDENTIFICATION

CAD Parcel ID	109267
Legal description	50 X 130 FT OLT 4 DIVISION Z
Acreage	0.15
Building name	None
Identification notes	None

## INTEGRITY

Alterations	Porch altered
Additions	Rear addition
Integrity notes	None

## HISTORY

History notes	None
---------------	------

## CLASSIFICATION

Current use	Residential
Original use	Residential
Year built	1925
Source for year built	West Line National Register Historic District nomination
Type	Single-family house
Form	Bungalow
Stylistic influences	Craftsman

## PRIOR DOCUMENTATION

Prior designations	Contributing to a NRHP district
--------------------	---------------------------------

## LOCAL RECOMMENDATIONS

Recommended local designations	Recommended contributing to a local historic district
Local recommendation notes	None

## DESCRIPTION

Stories	1
Roof form	Front-gabled
Exterior wall materials	Wood

1404 W 9TH ST



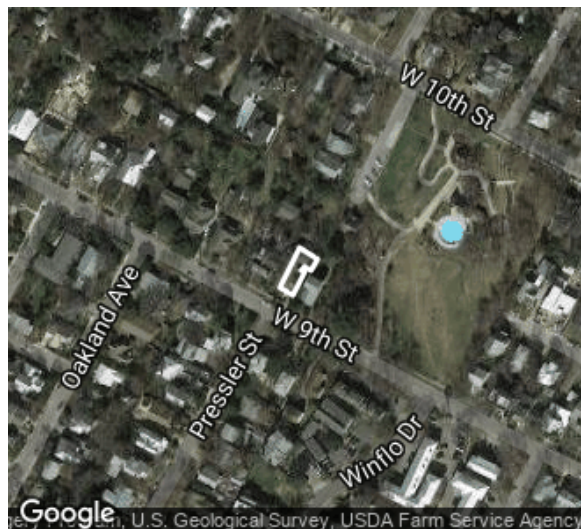
Oct 2017

1404 W 9TH ST



Oct 2017

# 1406 W 9TH ST



Date recorded: Oct 2017

Image ID: 8080

Coordinates: 30.2767133, -97.7583485

## IDENTIFICATION

CAD Parcel ID	109268
Legal description	1.039 AC OF OLT 4 DIVISION Z
Acreage	1.039
Building name	None
Identification notes	None

## CLASSIFICATION

Current use	Residential
Original use	Residential
Year built	1958
Source for year built	Building permit
Type	Single-family house
Form	Hall-and-parlor
Stylistic influences	Minimal Traditional

## DESCRIPTION

Stories	1
Roof form	Side-gabled
Exterior wall materials	Wood

## INTEGRITY

Alterations	Doors replaced, Fenestration pattern altered
Additions	Rear addition
Integrity notes	None

## HISTORY

History notes	West Line National Register Historic District nomination lists year built as 1960
---------------	---

## PRIOR DOCUMENTATION

Prior designations	Non-contributing to a NRHP district
--------------------	-------------------------------------

## LOCAL RECOMMENDATIONS

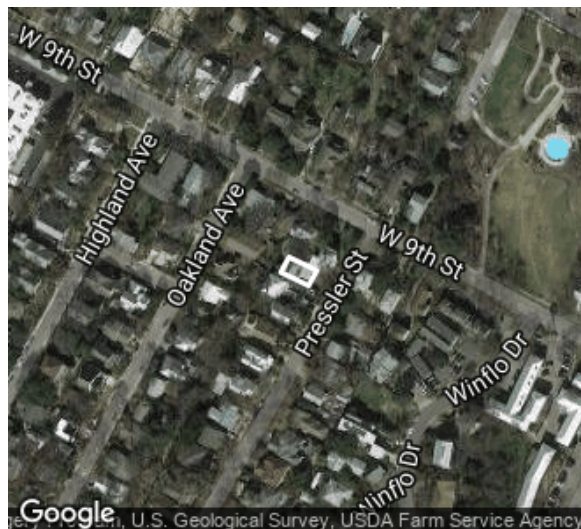
Recommended local designations	Recommended non-contributing to a local historic district
Local recommendation notes	None

1406 W 9TH ST



Oct 2017

# 1407 W 9TH ST



Date recorded: Oct 2017

Image ID: 7853

Coordinates: 30.2762699, -97.7589855

## IDENTIFICATION

CAD Parcel ID	106752
Legal description	LOT 1 OAT WILLIES
Acreage	0.2892
Building name	None
Identification notes	None

## INTEGRITY

Alterations	Exterior wall materials replaced, Doors replaced, Porch enclosed, Fenestration pattern altered
Additions	Front porch added, 2-story addition possibly constructed in 1975
Integrity notes	None

## CLASSIFICATION

Current use	Residential
Original use	Residential
Year built	1974
Source for year built	West Line National Register Historic District nomination
Type	Back house
Form	Massed plan
Stylistic influences	No stylistic influences visible

## HISTORY

History notes	None
---------------	------

## PRIOR DOCUMENTATION

Prior designations	Non-contributing to West Line National Register Historic District
--------------------	---

## LOCAL RECOMMENDATIONS

Recommended local designations	Recommended non-contributing to a local historic district
Local recommendation notes	None

## DESCRIPTION

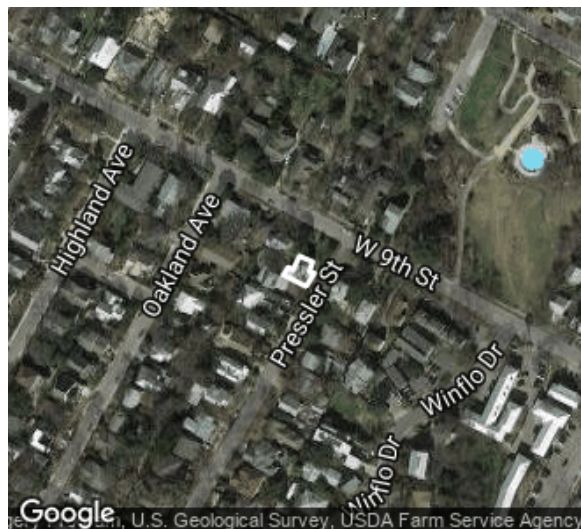
Stories	2
Roof form	Side-gabled
Exterior wall materials	Wood

1407 W 9TH ST



Oct 2017

# 1407 W 9TH ST



Date recorded: Oct 2017

Image ID: 7855

Coordinates: 30.2763214, -97.7588215

## IDENTIFICATION

CAD Parcel ID	106752
Legal description	LOT 1 OAT WILLIES
Acreage	0.2892
Building name	William Pillow House
Identification notes	None

## INTEGRITY

Alterations	None visible
Additions	Side addition, Rear addition
Integrity notes	None

## HISTORY

History notes	None
---------------	------

## CLASSIFICATION

Current use	Residential
Original use	Residential
Year built	1877
Source for year built	West Line National Register Historic District nomination
Type	Single-family house
Form	Massed plan
Stylistic influences	Queen Anne

## PRIOR DOCUMENTATION

Prior designations	Contributing to a NRHP district, Local landmark
--------------------	---

## LOCAL RECOMMENDATIONS

Recommended local designations	Recommended contributing to a local historic district
Local recommendation notes	None

## DESCRIPTION

Stories	2
Roof form	Hipped
Exterior wall materials	Wood

1407 W 9TH ST



Oct 2017

1407 W 9TH ST



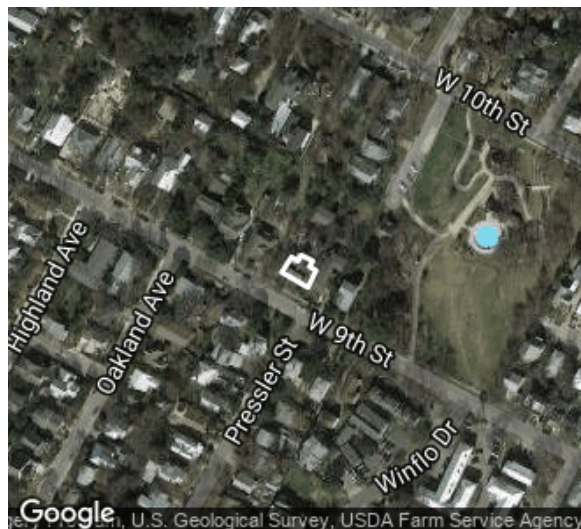
Oct 2017

1407 W 9TH ST



Oct 2017

# 1408 W 9TH ST



Date recorded: Oct 2017

Image ID: 8081

Coordinates: 30.2767343, -97.7585409

## IDENTIFICATION

CAD Parcel ID	109268
Legal description	1.039 AC OF OLT 4 DIVISION Z
Acreage	1.039
Building name	St Philips Anglican Church
Identification notes	None

## INTEGRITY

Alterations	Altered from single-family house to church
Additions	None visible
Integrity notes	None

## HISTORY

History notes	None
---------------	------

## CLASSIFICATION

Current use	Religious
Original use	Religious
Year built	1915
Source for year built	West Line National Register Historic District nomination
Type	Church
Form	Massed plan
Stylistic influences	Craftsman

## PRIOR DOCUMENTATION

Prior designations	Contributing to a NRHP district
--------------------	---------------------------------

## LOCAL RECOMMENDATIONS

Recommended local designations	Recommended contributing to a local historic district
Local recommendation notes	None

## DESCRIPTION

Stories	1
Roof form	Cross-gabled
Exterior wall materials	Wood

1408 W 9TH ST



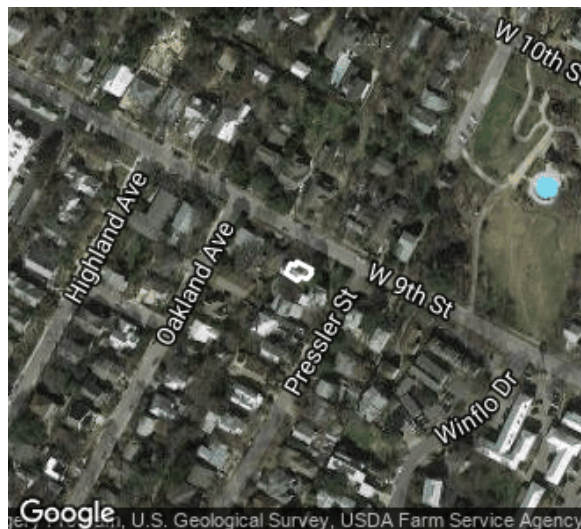
Oct 2017

1408 W 9TH ST



Oct 2017

# 1409 W 9TH ST



Date recorded: Oct 2017

Image ID: 7862

Coordinates: 30.2764734, -97.7589157

## IDENTIFICATION

CAD Parcel ID	106751
Legal description	0.095 AC OF OLT 3 DIVISION Z
Acreage	0.095
Building name	None
Identification notes	None

## INTEGRITY

Alterations	None visible
Additions	Side addition
Integrity notes	None

## HISTORY

History notes	West Line National Register Historic District nomination lists year built as 1940
---------------	---

## CLASSIFICATION

Current use	Residential
Original use	Residential
Year built	1938
Source for year built	Building permit
Type	Single-family house
Form	Center passage
Stylistic influences	Classical Revival

## PRIOR DOCUMENTATION

Prior designations	Contributing to a NRHP district
--------------------	---------------------------------

## LOCAL RECOMMENDATIONS

Recommended local designations	Recommended contributing to a local historic district
Local recommendation notes	None

## DESCRIPTION

Stories	2
Roof form	Side-gabled
Exterior wall materials	Wood

1409 W 9TH ST



Oct 2017

1409 W 9TH ST



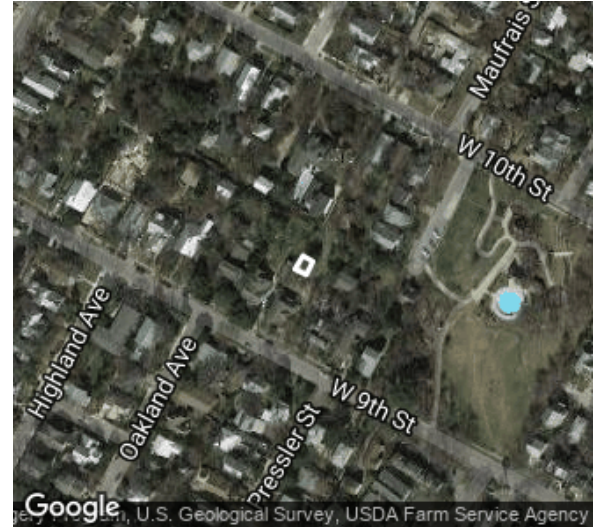
Oct 2017

# 1410 W 9TH ST



Date recorded: Jan 2018

Image ID: 8120



Coordinates: 30.277114, -97.7586583

## IDENTIFICATION

CAD Parcel ID	109268
Legal description	1.039 AC OF OLT 4 DIVISION Z
Acreage	1.039
Building name	None
Identification notes	None

## CLASSIFICATION

Current use	Residential
Original use	Residential
Year built	1948
Source for year built	TCAD
Type	Back house
Form	Bungalow
Stylistic influences	No stylistic influences visible

## DESCRIPTION

Stories	1
Roof form	Front-gabled
Exterior wall materials	Stone, Wood

## INTEGRITY

Alterations	Doors replaced, Windows replaced, Porch altered
Additions	Rear addition
Integrity notes	None

## HISTORY

History notes	None
---------------	------

## PRIOR DOCUMENTATION

Prior designations	None
--------------------	------

## LOCAL RECOMMENDATIONS

Recommended local designations	Recommended non-contributing to a local historic district
Local recommendation notes	None

1410 W 9TH ST



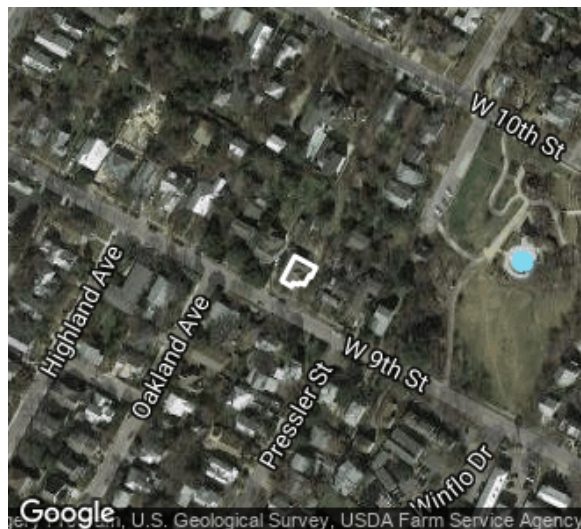
Jan 2018

1410 W 9TH ST



Jan 2018

# 1410 W 9TH ST



Date recorded: Oct 2017

Image ID: 8085

Coordinates: 30.2768623, -97.7587731

## IDENTIFICATION

CAD Parcel ID	109268
Legal description	1.039 AC OF OLT 4 DIVISION Z
Acreage	1.039
Building name	None
Identification notes	None

## INTEGRITY

Alterations	Porch altered
Additions	Side addition
Integrity notes	None

## HISTORY

History notes	None
---------------	------

## CLASSIFICATION

Current use	Residential
Original use	Residential
Year built	1915
Source for year built	West Line National Register Historic District nomination
Type	Single-family house
Form	Bungalow
Stylistic influences	Craftsman

## PRIOR DOCUMENTATION

Prior designations	Contributing to a NRHP district
--------------------	---------------------------------

## LOCAL RECOMMENDATIONS

Recommended local designations	Recommended contributing to a local historic district
Local recommendation notes	None

## DESCRIPTION

Stories	1
Roof form	Front-gabled
Exterior wall materials	Wood

1410 W 9TH ST



Oct 2017

1410 W 9TH ST



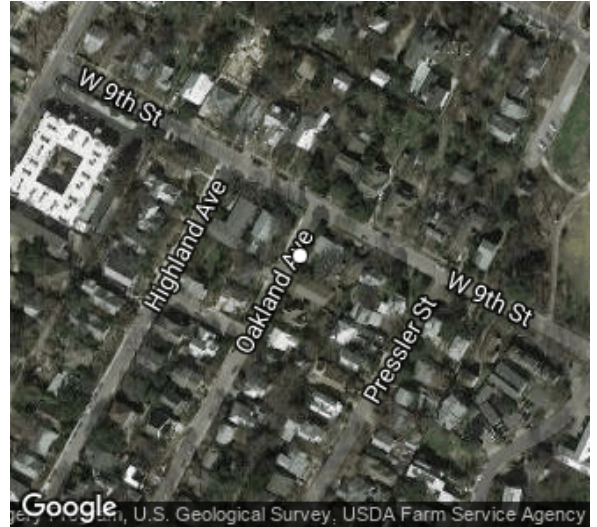
Oct 2017

# 1411 W 9TH ST



Date recorded: Dec 2017

Image ID: 8116



Coordinates: 30.2765399, -97.7593906

## IDENTIFICATION

CAD Parcel ID	563666
Legal description	CONDOS DE TRACEN AMENDED PLUS 21.0% INT IN COM AREA
Acreage	0.0498
Building name	None
Identification notes	None

## CLASSIFICATION

Current use	Residential
Original use	Residential
Year built	ca. 1915
Source for year built	Field estimate
Type	Retaining wall
Form	Crenellated
Stylistic influences	No stylistic influences visible

## DESCRIPTION

Stories	N/A
Roof form	N/A
Exterior wall materials	Stone

## INTEGRITY

Alterations	None visible
Additions	None visible
Integrity notes	None

## HISTORY

History notes	None
---------------	------

## PRIOR DOCUMENTATION

Prior designations	Resource not included in West Line National Register Historic District nomination
--------------------	---

## LOCAL RECOMMENDATIONS

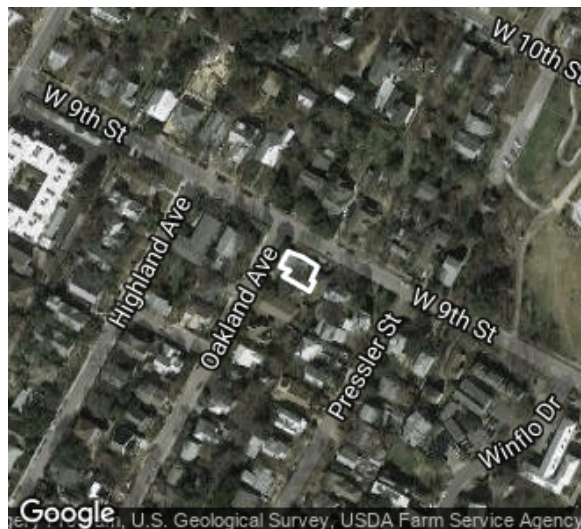
Recommended local designations	Recommended contributing to a local historic district
Local recommendation notes	None

1411 W 9TH ST



Dec 2017

# 1411 W 9TH ST



Date recorded: Oct 2017

Image ID: 7868

Coordinates: 30.276603, -97.7591891

## IDENTIFICATION

CAD Parcel ID	563666
Legal description	CONDOS DE TRACEN AMENDED PLUS 21.0% INT IN COM AREA
Acreage	0.0498
Building name	None
Identification notes	Condo units, TCAD ID 563667 through 563669

## CLASSIFICATION

Current use	Residential
Original use	Residential
Year built	1915
Source for year built	West Line National Register Historic District nomination
Type	Single-family house
Form	Massed plan
Stylistic influences	Prairie

## DESCRIPTION

Stories	1
Roof form	Flat
Exterior wall materials	Wood

## INTEGRITY

Alterations	None visible
Additions	Rear addition (ca. 1975 according to West Line National Register Historic District nomination)
Integrity notes	None

## HISTORY

History notes	None
---------------	------

## PRIOR DOCUMENTATION

Prior designations	Non-contributing to a NRHP district
--------------------	--

## LOCAL RECOMMENDATIONS

Recommended local designations	Recommended contributing to a local historic district
Local recommendation notes	Previous non-contributing designation based on different integrity standards

1411 W 9TH ST



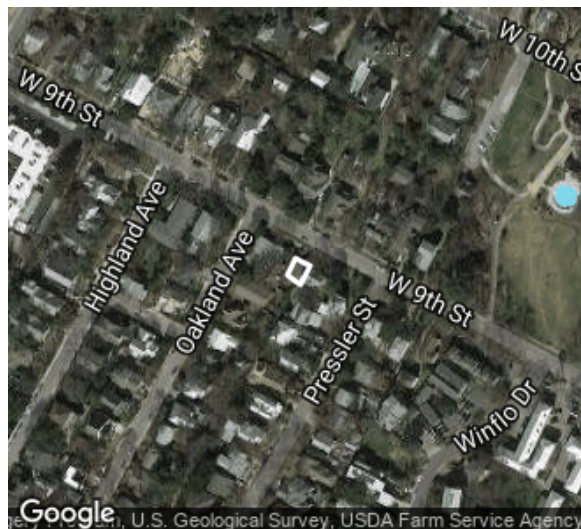
Oct 2017

1411 W 9TH ST



Oct 2017

# 1411A W 9TH ST



Date recorded: Oct 2017

Image ID: 7865

Coordinates: 30.2765259, -97.7590383

## IDENTIFICATION

CAD Parcel ID	563670
Legal description	UNT A CONDOS DE TRACEN AMENDED PLUS 35.0% INT IN COM AREA
Acreage	0.0829
Building name	None
Identification notes	Listed as 1411B in West Line National Register Historic District nomination

## CLASSIFICATION

Current use	Residential
Original use	Residential
Year built	1920
Source for year built	West Line National Register Historic District nomination
Type	Single-family house
Form	Modified L-plan
Stylistic influences	National Folk

## DESCRIPTION

Stories	1
Roof form	Hipped
Exterior wall materials	Wood

## INTEGRITY

Alterations	None visible
Additions	Rear addition
Integrity notes	None

## HISTORY

History notes	None
---------------	------

## PRIOR DOCUMENTATION

Prior designations	Contributing to West Line National Register Historic District
--------------------	---

## LOCAL RECOMMENDATIONS

Recommended local designations	Recommended contributing to a local historic district
Local recommendation notes	None

1411A W 9TH ST



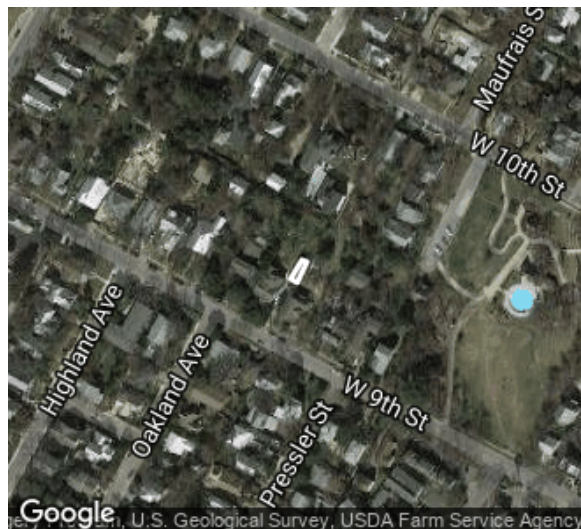
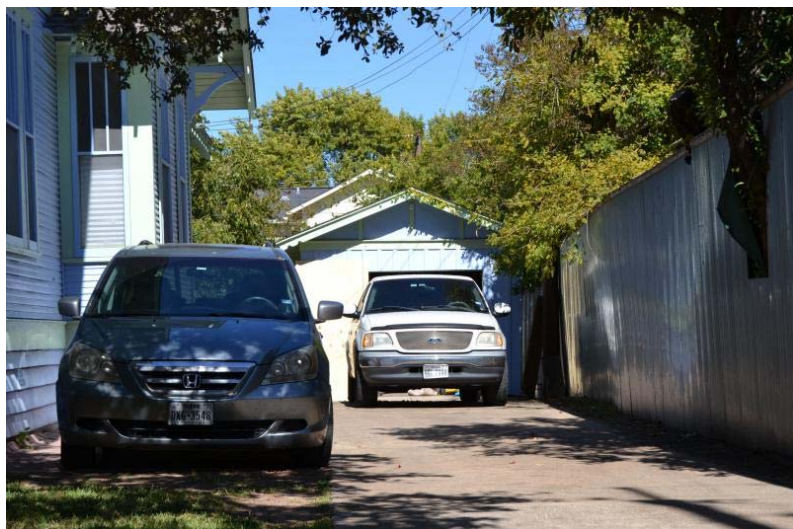
Oct 2017

1411A W 9TH ST



Oct 2017

# 1412 W 9TH ST



Date recorded: Oct 2017

Image ID: 8106

Coordinates: 30.2770632, -97.7587608

## IDENTIFICATION

CAD Parcel ID	109270
Legal description	LOT 12 OLT 4 DIV Z WENDLANDTS
Acreage	0.3136
Building name	None
Identification notes	None

## INTEGRITY

Alterations	None visible
Additions	None visible
Integrity notes	None

## HISTORY

History notes	None
---------------	------

## CLASSIFICATION

Current use	Residential
Original use	Residential
Year built	1920
Source for year built	West Line National Register Historic District nomination
Type	Garage
Form	One-room
Stylistic influences	No stylistic influences visible

## PRIOR DOCUMENTATION

Prior designations	Contributing to West Line National Register Historic District
--------------------	---

## LOCAL RECOMMENDATIONS

Recommended local designations	Recommended contributing to a local historic district
Local recommendation notes	None

## DESCRIPTION

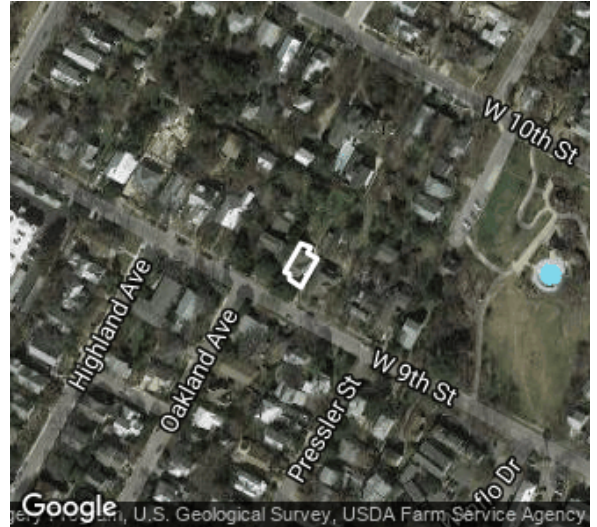
Stories	1
Roof form	Front-gabled
Exterior wall materials	Wood

1412 W 9TH ST



Oct 2017

# 1412 W 9TH ST



Date recorded: Oct 2017

Image ID: 8083

Coordinates: 30.2769715, -97.7589257

## IDENTIFICATION

CAD Parcel ID	109270
Legal description	LOT 12 OLT 4 DIV Z WENDLANDTS
Acreage	0.3136
Building name	Ernest and Irma Wilde House
Identification notes	None

## INTEGRITY

Alterations	None visible
Additions	Side addition
Integrity notes	None

## HISTORY

History notes	None
---------------	------

## CLASSIFICATION

Current use	Residential
Original use	Residential
Year built	1915
Source for year built	West Line National Register Historic District nomination
Type	Single-family house
Form	Bungalow
Stylistic influences	Craftsman

## PRIOR DOCUMENTATION

Prior designations	Local landmark, Contributing to a NRHP district
--------------------	--

## LOCAL RECOMMENDATIONS

Recommended local designations	Recommended contributing to a local historic district
Local recommendation notes	None

## DESCRIPTION

Stories	1
Roof form	Cross-gabled
Exterior wall materials	Wood

1412 W 9TH ST



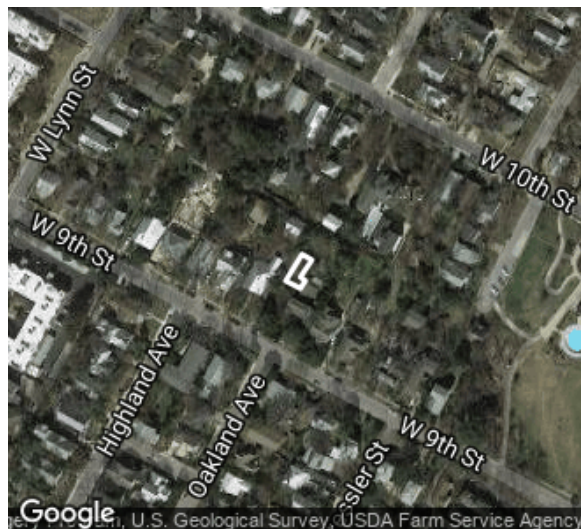
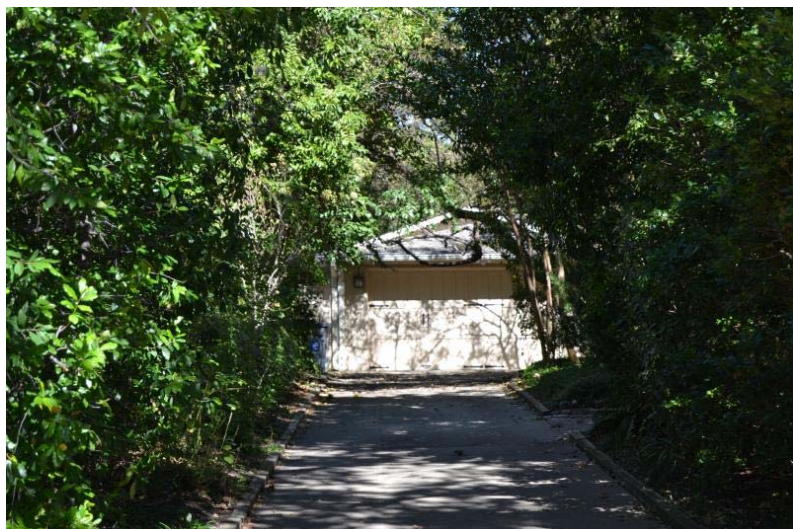
Oct 2017

1412 W 9TH ST



Oct 2017

# 1500 W 9TH ST



Date recorded: Oct 2017

Image ID: 8090

Coordinates: 30.2772835, -97.7591137

## IDENTIFICATION

CAD Parcel ID	109271
Legal description	LOT 11 OLT 4 DIV Z WENDLANDTS
Acreage	0.5113
Building name	None
Identification notes	None

## INTEGRITY

Alterations	None visible
Additions	None visible
Integrity notes	None

## HISTORY

History notes	None
---------------	------

## CLASSIFICATION

Current use	Residential
Original use	Residential
Year built	1925
Source for year built	West Line National Register Historic District nomination
Type	Garage
Form	One-room
Stylistic influences	No stylistic influences visible

## PRIOR DOCUMENTATION

Prior designations	Non-contributing to West Line National Register Historic District
--------------------	---

## LOCAL RECOMMENDATIONS

Recommended local designations	Recommended contributing to a local historic district
Local recommendation notes	Previous non-contributing designation likely based on different integrity standards

## DESCRIPTION

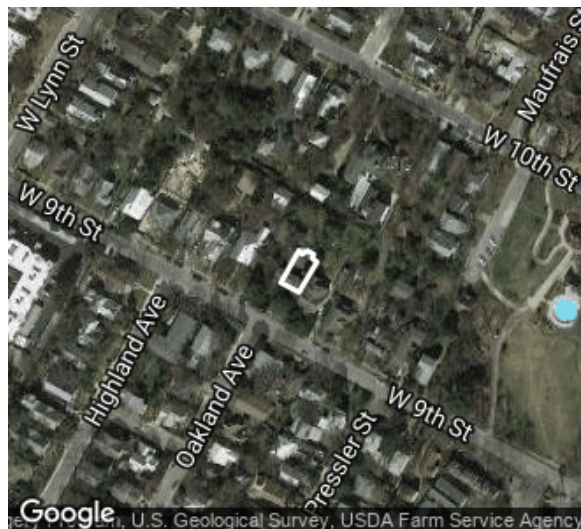
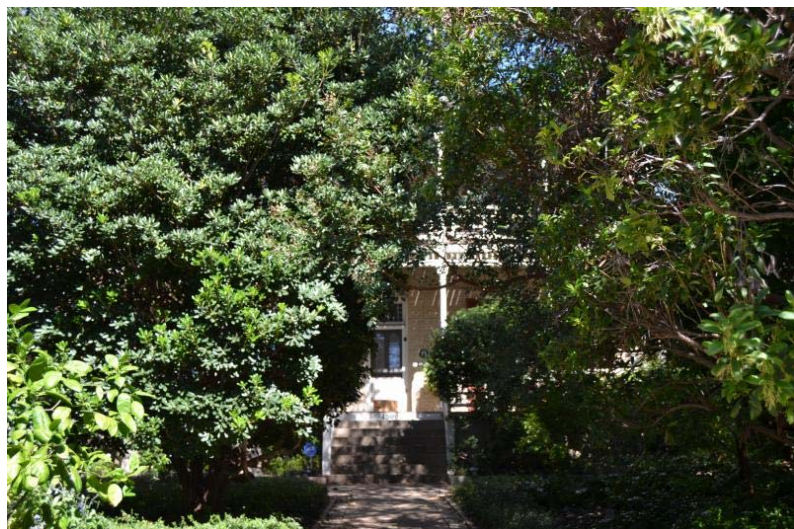
Stories	1
Roof form	Hipped
Exterior wall materials	Wood

1500 W 9TH ST



Oct 2017

# 1500 W 9TH ST



Date recorded: Oct 2017

Image ID: 8087

Coordinates: 30.2771262, -97.759034

## IDENTIFICATION

CAD Parcel ID	109271
Legal description	LOT 11 OLT 4 DIV Z WENDLANDTS
Acreage	0.5113
Building name	Hopkins Homestead
Identification notes	None

## INTEGRITY

Alterations	None visible
Additions	None visible
Integrity notes	None

## HISTORY

History notes	None
---------------	------

## CLASSIFICATION

Current use	Residential
Original use	Residential
Year built	1882
Source for year built	West Line National Register Historic District nomination
Type	Single-family house
Form	Massed plan
Stylistic influences	Stick Style, Greek Revival

## PRIOR DOCUMENTATION

Prior designations	Local landmark, Contributing to a NRHP district
--------------------	--

## LOCAL RECOMMENDATIONS

Recommended local designations	Recommended contributing to a local historic district
Local recommendation notes	None

## DESCRIPTION

Stories	2
Roof form	Side-gabled
Exterior wall materials	Brick

1500 W 9TH ST



Oct 2017

1500 W 9TH ST



Oct 2017