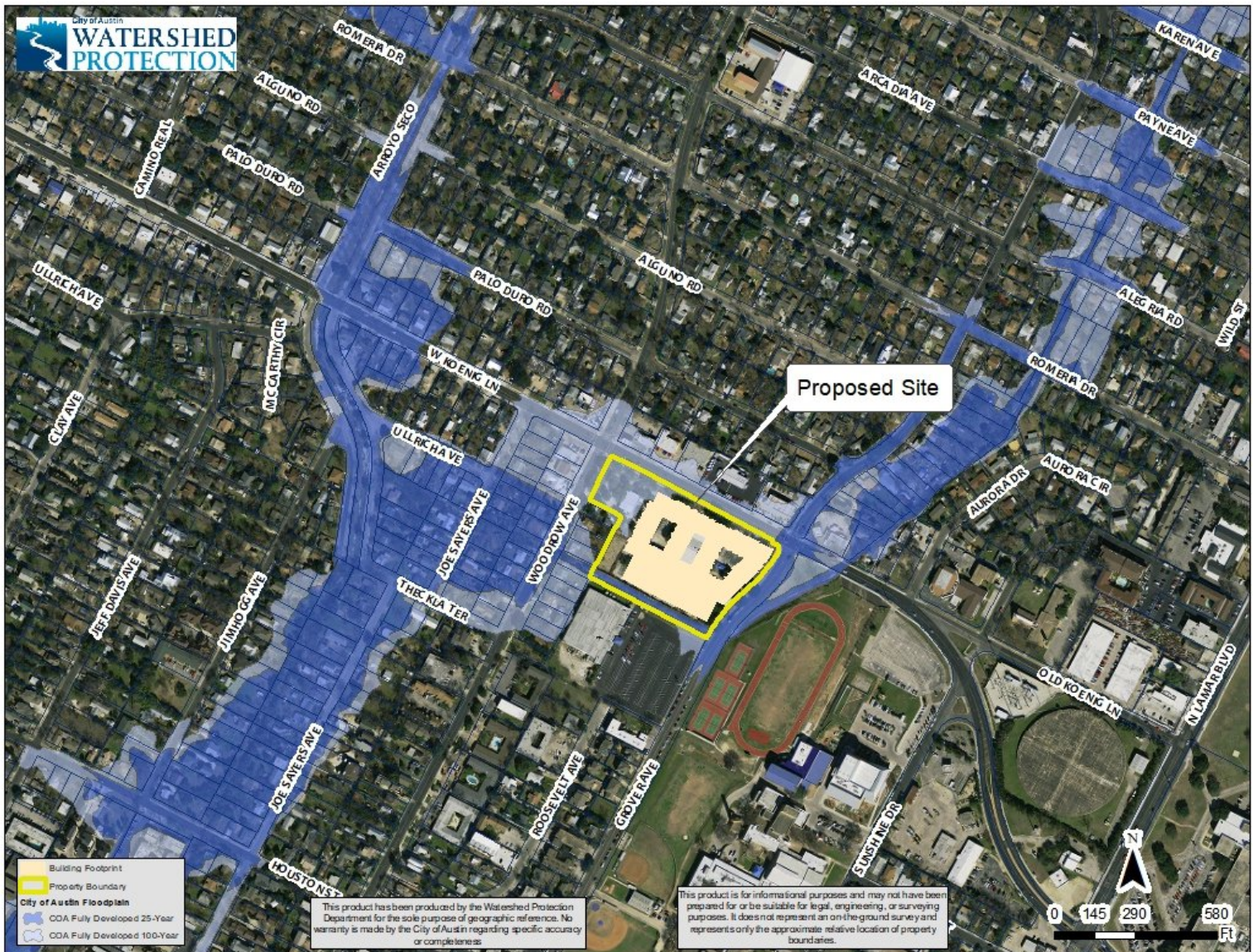


Backup Information Packet

Concerning a public hearing to consider an ordinance authorizing floodplain variances to construct a multi-family development located at 1301 W. Koenig Lane and related site work, which encroaches in the 25-year and the 100-year floodplains of Grover Tributary of Shoal Creek.

Site Location Map with Current Floodplains for 1301 W. Koenig Lane



Zoomed in Site Location Map for 1301 W. Koenig Lane

