



Bond Oversight Commission

2012 Bond – Prop 16 Update

Austin Police Department
December 14, 2016





Outline

- Prop 16 Overview
- Spending Summary
- Projects in Progress
- Projects Targeted for Future Bond Development





2012 Bond – Prop 16 Spending Summary

Appropriation Category	Amount	Expenditures	Obligated	Balance	% of Balance
Facility Renovations	\$ 1,992,300	\$ 294,341	\$ 548,585	\$ 1,443,715	72.46%
New Facilities	\$ 6,963,413	\$ 493,879	\$ 706,149	\$ 6,257,264	89.85%
Land Acquisition	\$ 5,819,935	\$ -	\$ -	\$ 5,819,935	100.00%
Total:	\$ 14,775,648	\$ 788,220	\$ 1,254,734	\$ 13,520,914	87.43%

FY 17	FY 18	FY 19
\$ 9,509,847	\$ 3,131,776	\$ 879,291





2012 Bond – Prop 16 Projects In-Progress

Facility Renovations

- **Nash Hernandez Building**
 - Design phase, construction start in 2019
 - Public-Public Partnership with PARD
 - Located in the Holly Shores Master Plan
 - \$5.25M renovation construction estimate

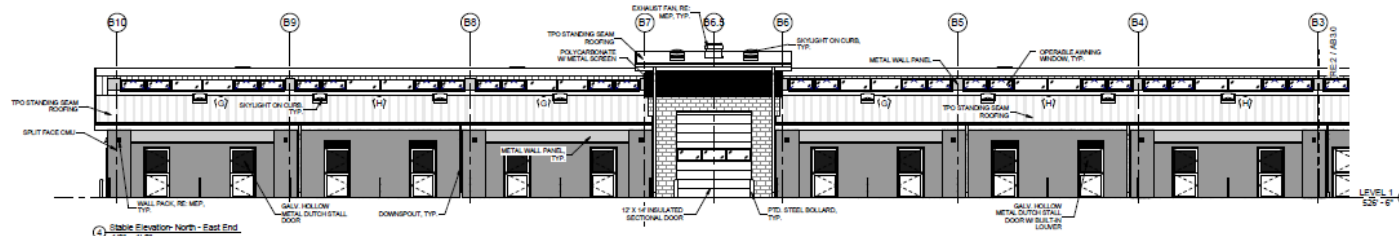
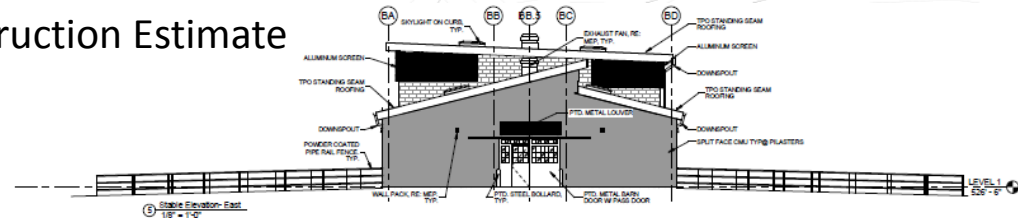
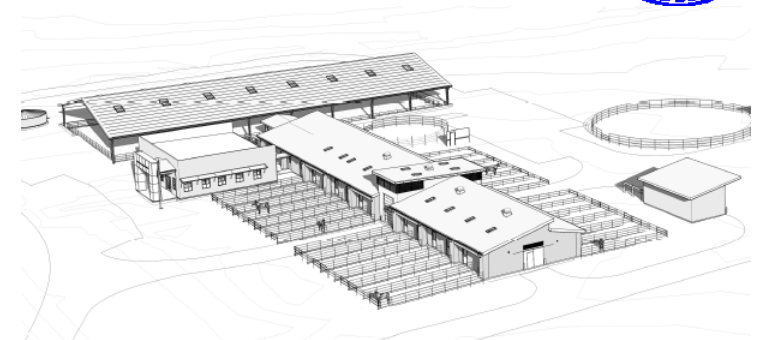




2012 Bond – Prop 16 Projects In-Progress

New Facilities

- Mounted Patrol
 - Design phase 90% complete
 - 24 Stalls with 50 ft. Runs
 - Construction start 3rd Qtr. 2017
 - Programmed LEED Silver
 - \$8.46M *Architects Construction Estimate

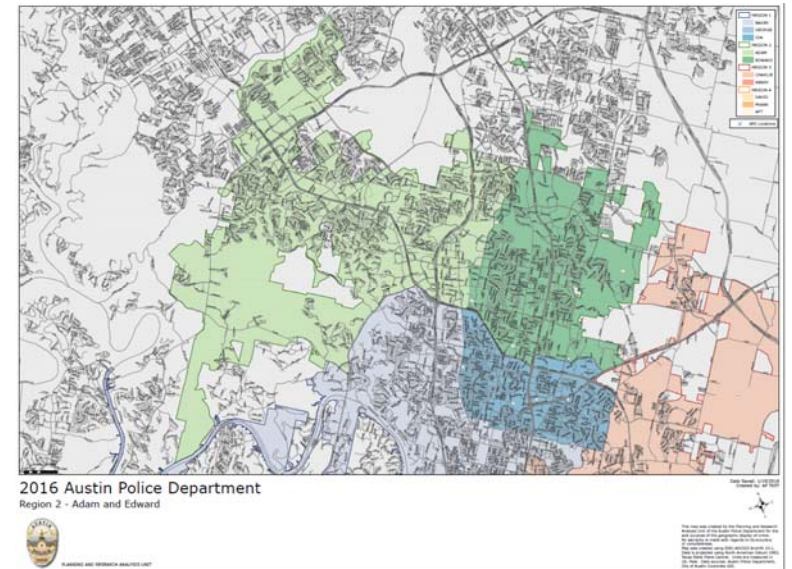




2012 Bond – Prop 16 Projects In-Progress

Land Acquisition

- North West Region II
 - Site acquisition 2017
 - Planning & Pre-Design 2018
 - Potential Public – Public Partnership
 - Phase II Design/Build - future bond





2012 Bond – Prop 16

Projects targeted for future bond development

- North West Substation; Region 2 Adam Sector
 - Design / Build Phase II
- North East Substation; IH35 & St. Johns
 - Site Acquisition & Preliminary Planning Complete
- Investigative Facility; Region 3 Henry Sector
 - Program of Requirements 90% Complete
- Air Operations Facility
 - Programming Completed
- New Police HQ Joint Public Safety Facility
 - Programming Completed
- Park Patrol / Rangers JuF
 - Phase II Construction estimate \$3.23M
- South West Substation
 - Programming Completed
- Central – West Substation
 - Programming Completed



Questions?

