

ID	Type	Page Number	Change Proposed <i>New changes in red. Additional Planning Commission and Joint Sustainability Committee comments are pending.</i>	Informed/ Proposed By
B-1	N/A	Various	There were typographical errors in the final draft document that will be corrected.	Staff
B-2	Street Network Table, Map	A8	<p>The Street Network Table and Map will be updated to include Level 1 Streets that were included in the Roadway Capacity Projects Map but were left out of the Street Network Table in error.</p> <p>The following text will be added to the Street Network Table home page to support the proposed change:</p> <p>"The right of way requirements for Level 2, 3, and 4 streets are included in the Street Network Table. <u>Level 1 streets (local streets) with improvements identified are included in the Street Network Table. Level 1 streets without improvements identified (local streets)</u> were not evaluated for right of way constraints and are all required to be 50 feet in constrained conditions and 60 feet in greenfield developments."</p>	Staff
B-3	Policy, Map	100, 104, A16	<p>Public Transportation System Policy 4 Invest in a high-capacity transit system Supporting text will include reference to the Project Connect "BRT Light" corridors as part of the long-term high-capacity transit system</p> <p>"For the BRT Light corridors in the Project Connect Long Term Vision Plan that are not slated for dedicated transit pathways in the near-term, we must continue to advance the levels of transit service, such as by increasing frequency to less than 15 minutes and by providing high-capacity vehicles, <del>in order to have a complete high-capacity transit system in the long term.</del> <u>Opportunities to make near-term operational improvements, such as designating transit-only lanes, should be made while pursuing longer-term opportunities to operate transit in dedicated pathways in the future in order to have a complete high-capacity transit system by 2039.</u>"</p> <p>Public Transportation System Map will be updated to reflect the BRT Light corridors (see revised map at the end of this exhibit)</p>	Urban Transportation Commission, Planning Commission
B-4	Policy	88	Roadway System Policy 1: "...provide new roadway connections <u>to improve street grid connectivity</u> and make improvements..."	Staff
B-5	Policy	158	Closures and Detours Policy 3 short description: "Limit and coordinate closures, including for special events, on the Vehicle, Transit, <u>and Bicycle</u> Priority Networks to minimize disruptions to transportation network operations"	Staff
B-6	Policy	7, 18	Designing for Safety Policy 1: " <u>Design and</u> manage for safe speeds"	Urban Transportation Commission

ID	Type	Page Number	Change Proposed <i>New changes in red. Additional Planning Commission and Joint Sustainability Committee comments are pending.</i>	Informed/ Proposed By
B-7	Policy	128	"Emerging technologies include new modes of vehicular travel, like scooters, connected and automated vehicles, <u>low-speed electric vehicles, and pedicabs.</u> "	Urban Transportation Commission, Pedestrian Advisory Council, Commission on Seniors, Community Development Commission, Bicycle Advisory Council
B-8	Policy	90	Roadway System Policy 3: "...high-occupancy vehicle lanes are a <del>another</del> strategy to increase person-carrying capacity. <u>Another strategy is to include access points to managed lanes that are configured to allow the efficient entrance and exit of commuter transit service.</u> Without..."	Urban Transportation Commission
B-9	Policy	75	Supplying Our Transportation Infrastructure introduction: "...increase its resiliency, <del>and</del> leverage mobility improvements through capital renewal, <u>and ensure it is available to everyone whenever and wherever they need to go.</u> We also must..."	Urban Transportation Commission, Pedestrian Advisory Council, Bicycle Advisory Council
B-10	Policy	54	Transportation Demand Management Programming introduction: "...away from peak travel times, <u>combine trips,</u> or reduce the need to take a trip in the first place."	Environmental Commission
B-11	Policy	70	Voluntary services, such as Drive a Senior, also provide shared mobility to people who don't drive, connecting people to services in our community.	Commission on Seniors
B-12	Policy	120	"...important facilities. <u>Urban trails can be a tool to connect the street grid to provide additional pedestrian and bicycle connectivity and shorten walking and bicycling distances.</u> New trail connections..."	Bicycle Advisory Council
B-13	Map, Street Network Table	93, A15	<p>The Roadway Capacity Projects Map and Street Network Table will reflect the following revisions:</p> <p>New alignments: FM 973 RD RELOCATION REDBUD TRL-ENFIELD RD CONNECTOR</p> <p>New roadways: RALPH ABLANEDO DR - from S CONGRESS AVE to S IH 35 SVRD SB NORTH LAKE CREEK PKWY - from AVERY RANCH BLVD to LAKELINE BLVD BRIDGE POINT PKWY - from COLDWATER CANYON DR to WEST COURTYARD DR</p> <p>Removed roads: FM 973-E BRAKER LN CONNECTOR DAHLGREEN AVE - GOHRAM GLEN LN TO SOUTH BAY LN SOUTH BAY LANE - SOUTH BAY LN TO MOPAC EXPY</p> <p><i>(See revised Roadway Capacity Projects Map and maps of individual project changes at the end of this exhibit)</i></p>	Staff

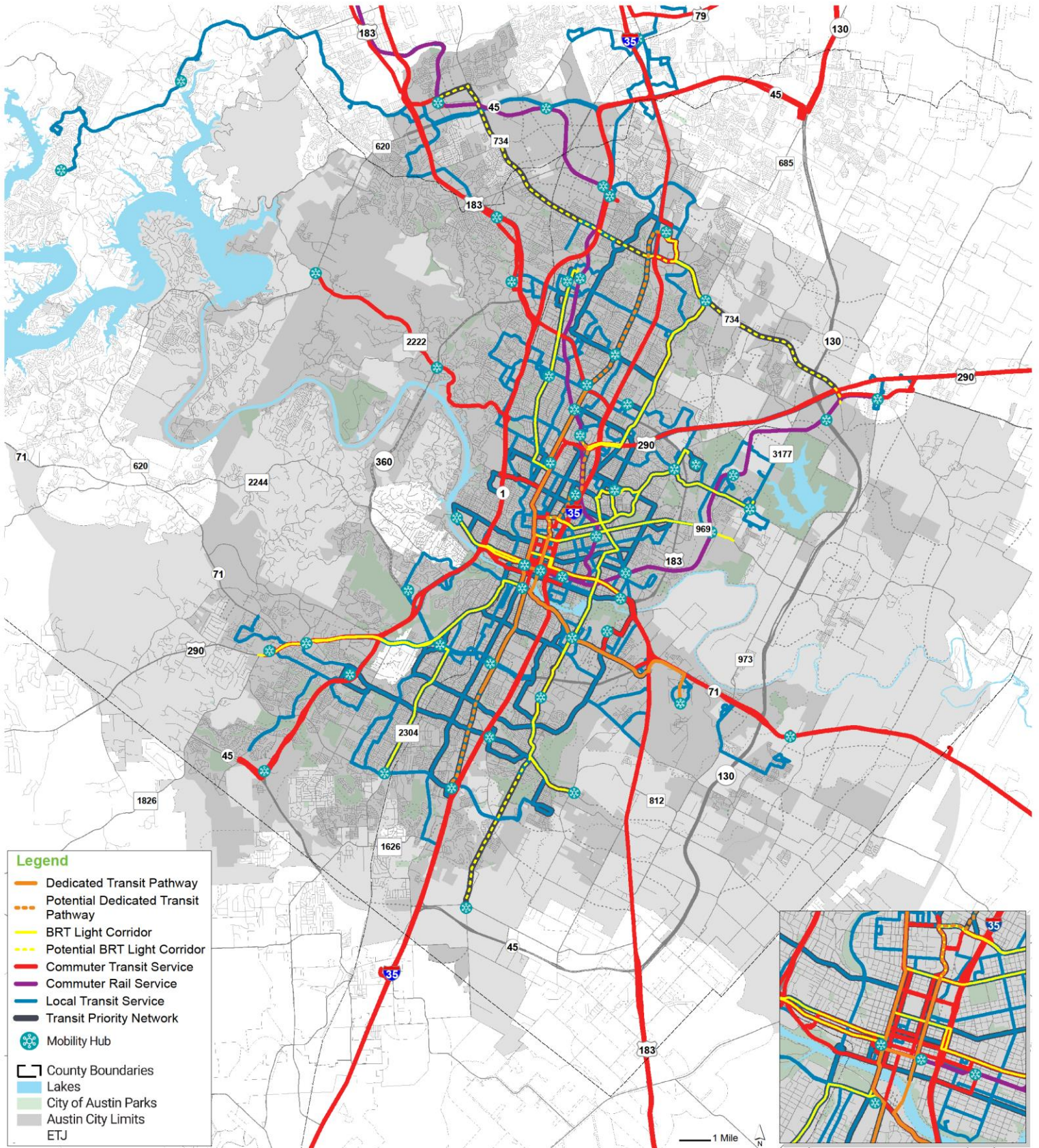
ID	Type	Page Number	Change Proposed <i>New changes in red. Additional Planning Commission and Joint Sustainability Committee comments are pending.</i>	Informed/ Proposed By
B-14	Map	37, 104, A13, A16	<p>The Transit Priority Network will include the following additional corridors:  Lakeline Blvd - from Staked Plains Dr/Lyndhurst St to Parmer Ln  Parmer Ln - from Lakeline Blvd/Neenah Ave to a future terminus near the Green Line  Pleasant Valley Rd - from William Cannon Dr to a future terminus near the Imagine Austin Southside Regional Center</p> <p><i>(See revised Growth Concept and Transit Priority Network Map at the end of this exhibit)</i></p>	Staff
B-15	Map	93, A15	<p>The Roadway Capacity Projects Map will be corrected to include the Vehicle Priority Network roadways that were included in the Phase III Draft Map. This layer was left out of the final map in error but this designation was included correctly in the Street Network Table.</p> <p><i>(See revised Roadway Capacity Projects Map at the end of this exhibit)</i></p>	Staff
B-16	Map	N/A	Appendix C: Add High-Injury Network maps for each mode to allow for mode specific viewing.	Bicycle Advisory Council
B-17	Map	114, A17	Bicycle Priority Network: Add W 29th St between N Lamar and Rio Grande	Bicycle Advisory Council
B-18	Indicators	219	<p>New Indicators:  Increase the percentage of affordable housing available at 30% MFI within 1/2 mile of transit and bicycle priority networks  Increase the percentage of affordable housing available at 50% MFI within 1/2 mile of transit and bicycle priority networks</p>	Community Development Commission
B-19	Glossary	#	Add "vulnerable user - a transportation network user that is not shielded by a protective shell"	Staff
B-20	Executive Summary	ix	Increase bicycle mode share from 4% to 5% based on Bicycle Plan	Pedestrian Advisory Council, Urban Transportation Commission
B-21	Executive Summary	xi	New Key Action Item: "Advance active transportation initiatives"	Bicycle Advisory Council
B-22	Appendices	A19	List of Attached Plans: Pedestrian <u>Safety</u> Action Plan	Staff
B-23	Action Item	269	Action Item 12: "...provide high visibility signs and markings in high priority areas <u>in compliance with International Dark Sky Association standards, where possible.</u> "	Environmental Commission
B-24	Action Item	270	<p>Action Item 21: "Update the Land Development Code to:...</p> <p>-allow for and incentivize transit-supportive densities and require a mixture of land uses along the Transit Priority Network <u>and within a 1/4 mile of those corridors...</u></p> <p><u>-incentivize shared driveways for all types of development</u></p>	Urban Transportation Commission
B-25	Action Items	271	<p>Action Item 26: "...allow for reduced or zero parking minimums, <u>excepting the required provision of accessible parking</u></p> <p><u>-consider requirements or incentives for short-term parking spaces/zones"</u></p>	Commission on Seniors, Bicycle Advisory Council, <b>Planning Commission</b>
B-26	Action Item	271	Action Item 32: "...flexible curb use, <u>dockless vehicle parking</u> , context-sensitive and ecologically-supportive design..."	Urban Transportation Commission

ID	Type	Page Number	Change Proposed <i>New changes in red. Additional Planning Commission and Joint Sustainability Committee comments are pending.</i>	Informed/ Proposed By
B-27	Action Items	271	Action Item 33: "...support the mobility plan goals, <u>acknowledging that not all members of the community have access to or skills to use the internet.</u> Include..."	Commission on Seniors
B-28	Action Item	273	Action Item 53: "...marketed to Austin's <del>most vulnerable populations</del> <u>historically underrepresented and underserved communities...</u> transportation options to <del>historically underserved and underrepresented</del> <u>these communities.</u> "	Staff
B-29	Action Item	273	Action 56: "...shared worksites ( <del>remote workstations</del> ) close to where employees live ( <u>remote workstations known as hoteling</u> )."	Staff
B-30	Action Item	274	Action Item 64: "...for low-income communities <del>and</del> , communities and neighborhoods with low vehicle-ownership rates, <u>and in places with limited transportation services.</u> Prioritize electric vehicles..."	Staff
B-31	Action Item	274	Action Item 61: "...on private property. <u>Develop priorities for locating dockless vehicle parking.</u> "	Urban Transportation Commission
B-32	Action Item	275	Action Item 72: "Develop a prioritization process for the design and construction of new roadway connections and capacity projects <u>that emphasizes improving the street grid pattern and connecting sustainable modes.</u> "	Urban Transportation Commission
B-33	Action Item	275	Action Item 73: "Develop projects that increase <u>person vehicle</u> capacity on our roadway system at strategic locations to manage congestion, facilitate emergency response, and provide connectivity. <u>Lane additions and roadway widening along the Transit Priority and Bicycle Priority Networks should prioritized dedication of space for the priority modes.</u> "	Urban Transportation Commission
B-34	Action Item	277	Action Item 97: "Assess streets on the Bicycle Priority Network for access management and other bicyclist safety measures, <u>such as opportunities to enhance intersections for bicycle mobility and safety.</u> "	Bicycle Advisory Council
B-35	Action Item	277	Action Item 104: "...urban trail system <u>and identify locations where trails could provide connectivity in the transportation network.</u> "	Staff
B-36	Action Item	279	Action Item 132: "Develop guidance, evaluate, and implement pedestrian crossing improvements, including leading pedestrian intervals, pedestrian scrambles at signalized intersections with high pedestrian volumes, <u>and signalized crossings at locations with high potential for pedestrian crossings.</u> "	Urban Transportation Commission, Pedestrian Advisory Council
B-37	Action Item	281	Action Item 159: "...method to evaluate pedestrian and bicycle <del>level of service</del> <u>accommodations.</u> Conduct pedestrian and bicycle <del>level of service</del> evaluations early..."	Urban Transportation Commission
B-38	Action Item	282	Action Item 164: "...negative impacts of global warming, <u>in accordance with the Austin Climate Protection Plan.</u> "	Urban Transportation Commission, <b>Planning Commission</b>
B-39	Action Items	285	Action Item 202: "...and education. <u>Support 311 or another appropriate entity with central dispatch capabilities to provide callers with information and assist with scheduling of rides.</u> Promote awareness of..."	Commission on Seniors
B-40	Action Items	285	Action Item 213: "...include accessible vehicles <del>and</del> , are responsive to accessible requests, <u>and offer customer service and sensitivity training to drivers providing service to riders of all ages and abilities.</u>	Commission on Seniors
B-41	Action Item	286	Action Item 224: "...Ozone Action Days, <u>anti-idling</u> , and others."	Environmental Commission
B-42	Action Item	289	Action Item 264: "...development patterns, <u>and goals of this plan.</u> "	Staff

ID	Type	Page Number	<b>Change Proposed</b> <i>New changes in red. Additional Planning Commission and Joint Sustainability Committee comments are pending.</i>	<b>Informed/ Proposed By</b>
B-43	Action Item	N/A	New Action Item: Explore and identify ways to measure and track non-work related trips.	Environmental Commission
B-44	Action Item	N/A	New Action Item: Explore the process to convert right of way to car-free space, such as active transportation malls.	Urban Transportation Commission, Pedestrian Advisory Council, Bicycle Advisory Council
B-45	Action Item	N/A	New Action Item: Educate the public on their role in keeping sidewalks clear and functional including vegetation removal, motor vehicle and dockless vehicle parking, and trash cart placement.	Pedestrian Advisory Council
B-46	Action Items	N/A	New Action Item: Conduct regular post-implementation review of new or redesigned transportation facilities to ensure that safety and mobility goals are adequately being met.	Bicycle Advisory Council
B-47	Action Items	N/A	New Action Item: Explore the creation of all ages and abilities bicycle access to and between all airport terminals.	Bicycle Advisory Council
B-48	Action Items	N/A	New Action Item: Evaluate existing processes for transportation safety analysis for the development review process and as part of capital project development.	Urban Transportation Commission, <b>Planning Commission</b>
B-49	Action Item	N/A	New Action Item: Implement strategies identified in the Regional Incident Management Strategic Plan and Performance Assessment, such as expanding the HERO program to cover more highways and regional arterial roadways, in order to improve the safety and reliability of our transportation network	Staff
B-50	Action Item	N/A	New Action Item: Explore opportunities to work with property owners to better utilize surface parking lots as mobility hubs, including park and ride opportunities to complement and enhance shared mobility solutions.	Staff
B-51	Policy	125	Condition of Infrastructure Policy 2: "Pursue opportunities to increase mobility options during capital <u>renewal</u> projects"	Staff
B-52	Policy	TBD	<i>Pending - Staff working on recommended changes to incorporate mobility justice concepts.</i>	Community Development Commission

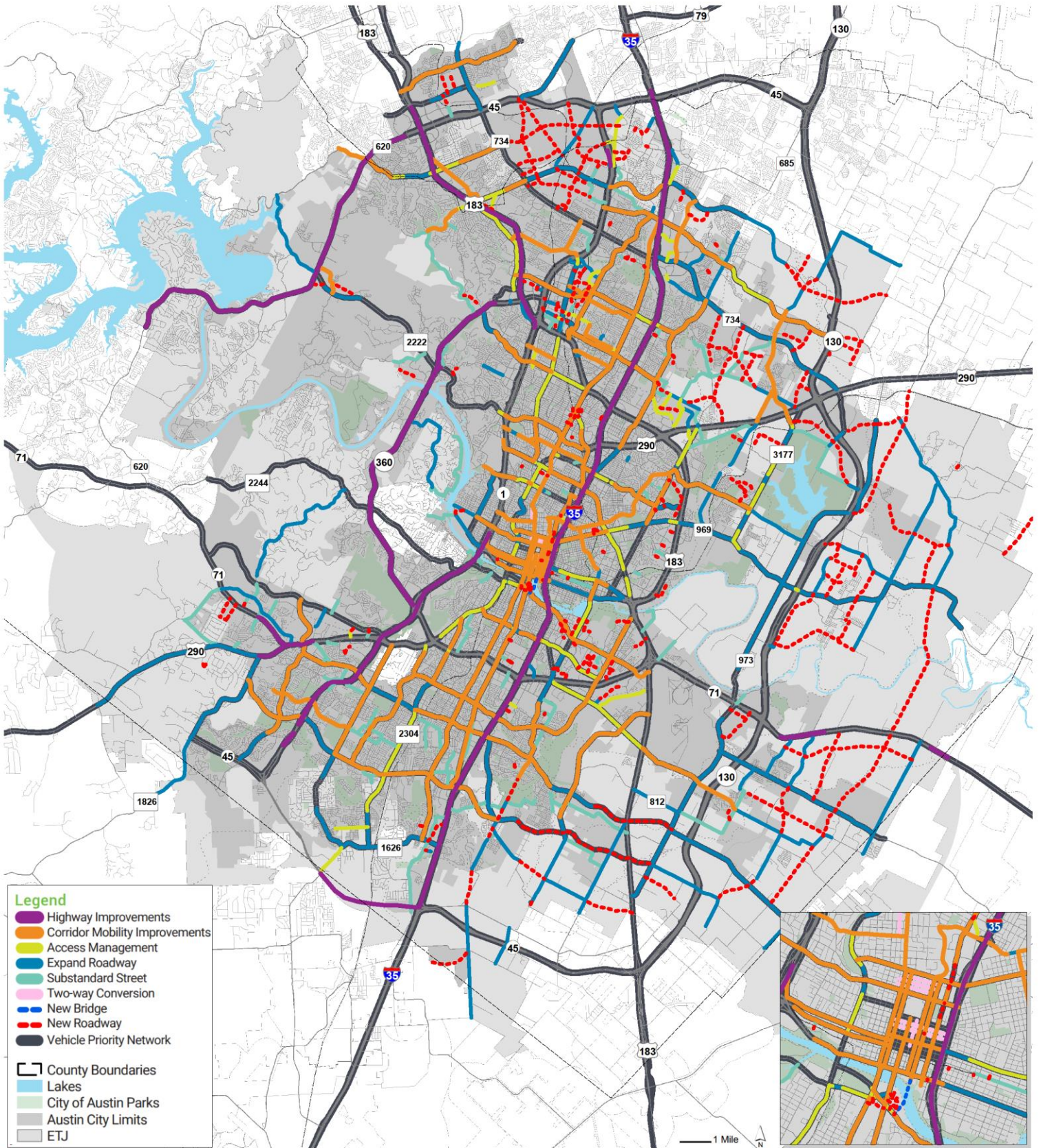


### Item B-3\_Revised Public Transportation System Map



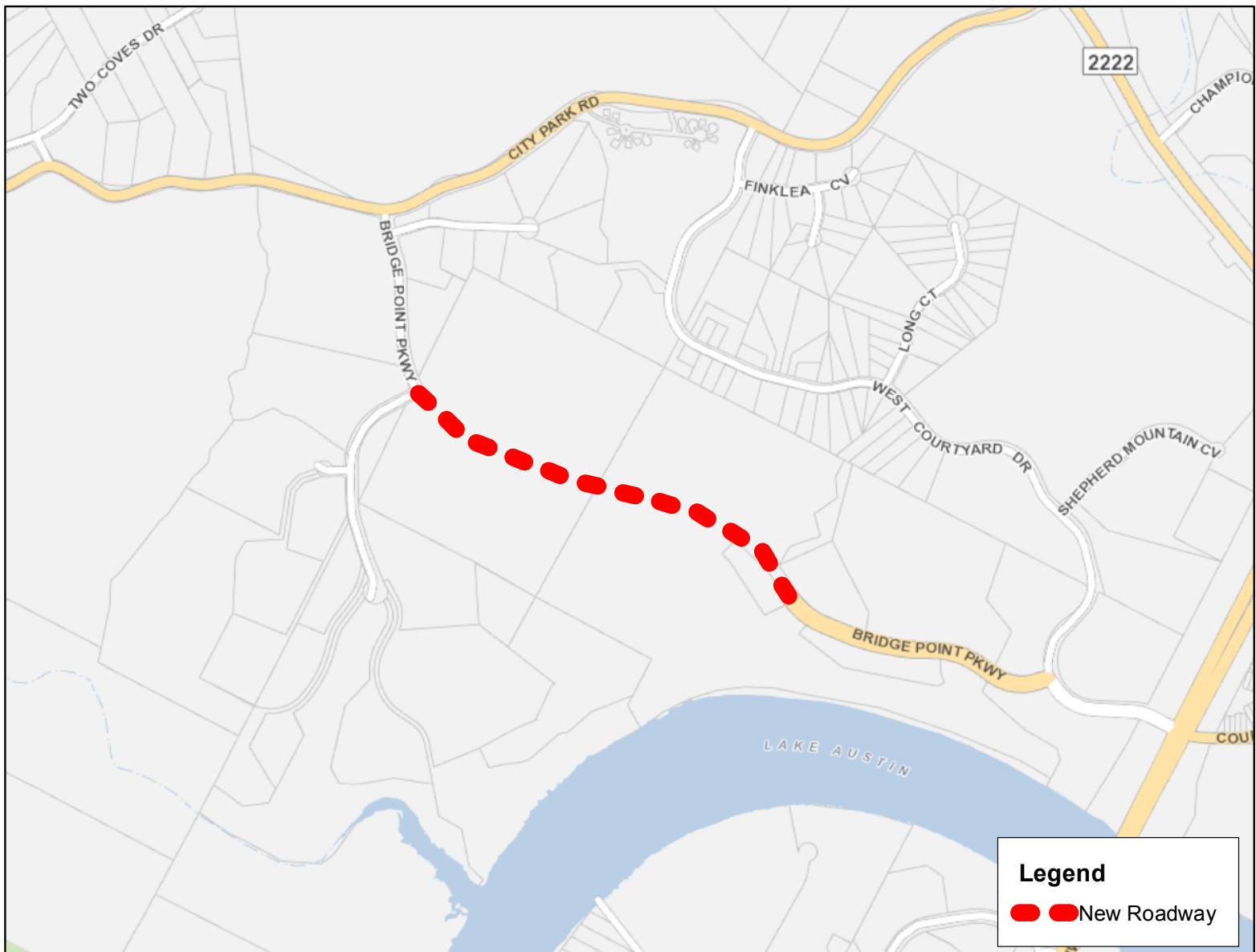


Item B-13 and B-15\_Revised Roadway Capacity Projects Map





## B- 13: BRIDGE POINT PKWY - New Roadway



### Details:

Name = BRIDGE POINT PKWY

Segment Limits = COLDWATER CANYON DR TO WEST COURTYARD DR

Type = Local Mobility

Street Level = Level 2

Improvement = New Roadway

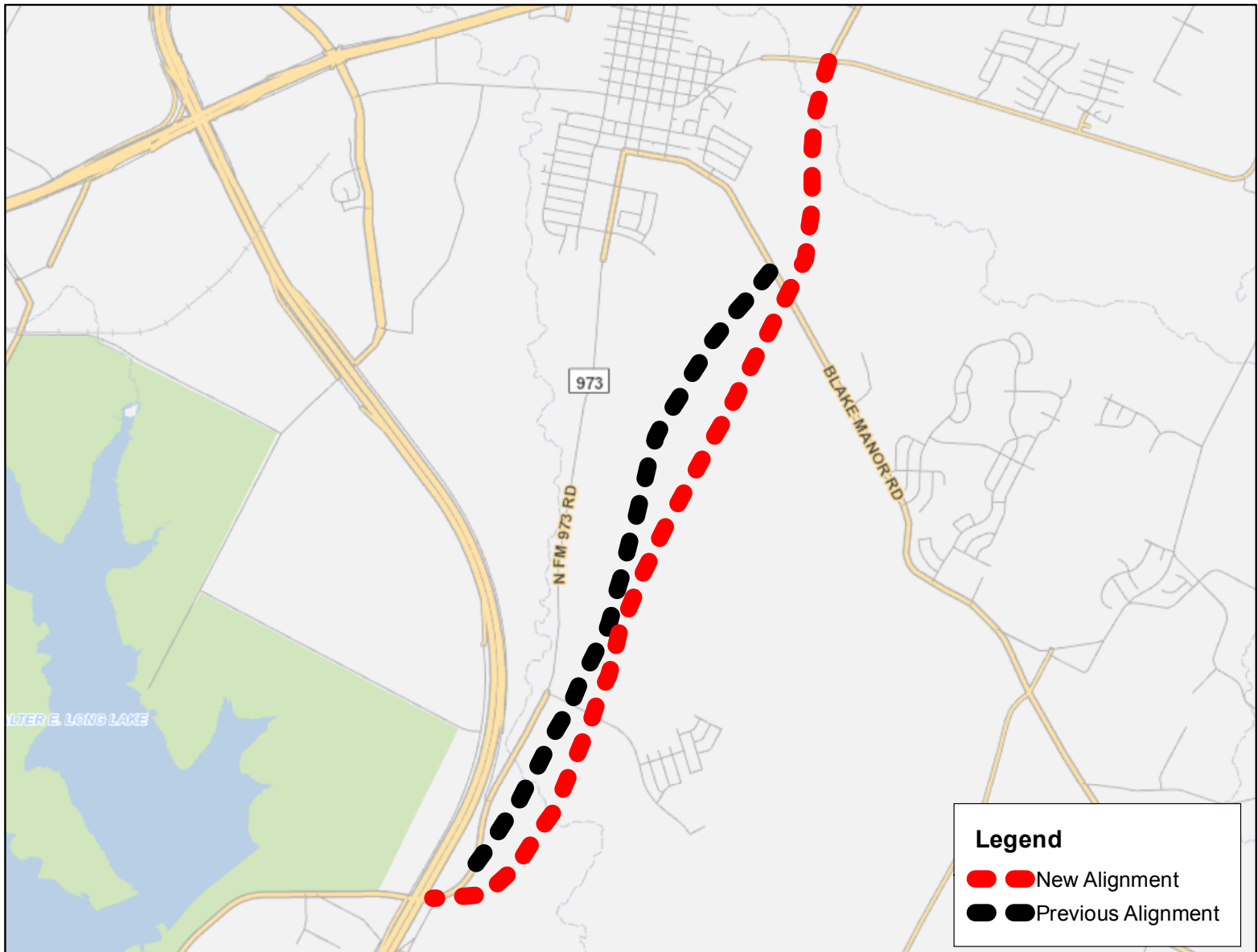
Project Description = The improvements include constructing a new roadway with all ages and abilities bicycle facilities and sidewalks.

### Change:

New Roadway. This new roadway has been identified as part of a new development.



## B -13: FM 973 RD RELOCATION - New Alignment



### Details:

Name = FM 973 RD RELOCATION

Segment Limits = END TO END

Type = Regional Mobility

Street Level = Level 4

Improvement = New Roadway

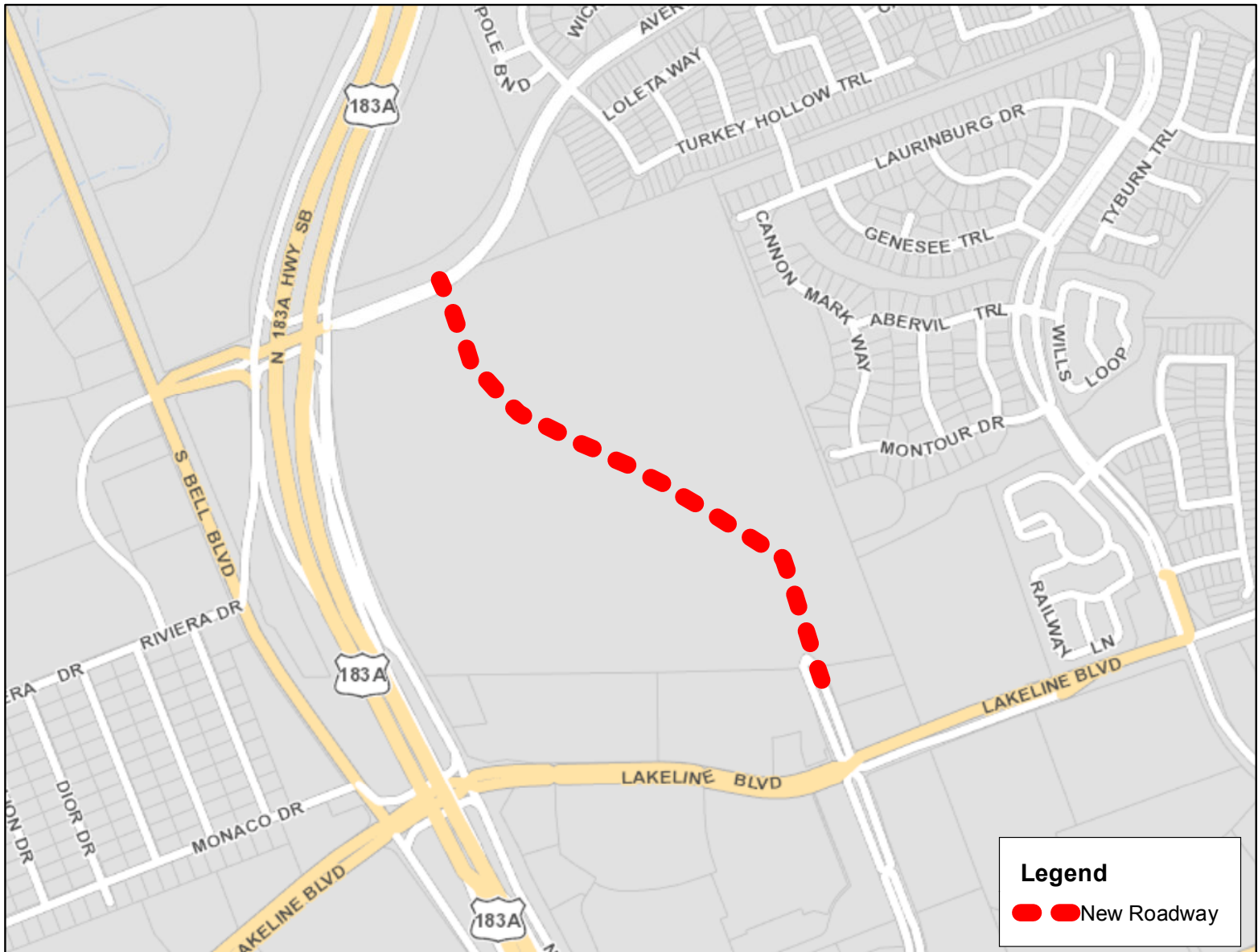
Project Description = This corridor is currently being studied. The improvements include constructing a new roadway with all ages and abilities bicycle facilities and sidewalks.

ROW Remarks = Defer to TxDOT

### Change:

New Alignment. This roadway is under the jurisdiction of the Texas Department of Transportation (TxDOT) and is currently being studied. This alignment is based off of the latest information provided and is being included for coordination purposes.

## B - 13: NORTH LAKE CREEK PKWY - New Roadway



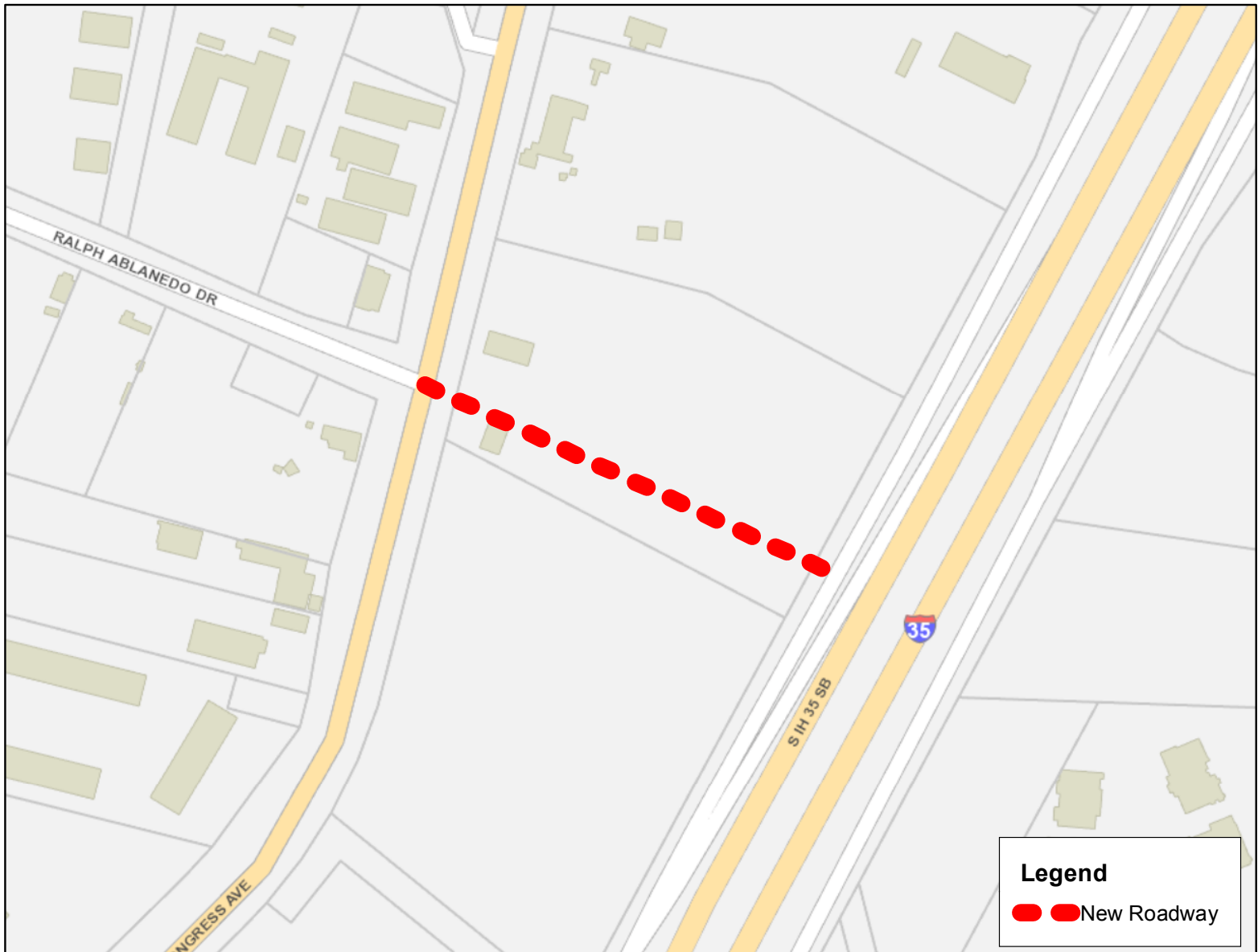
### Details:

Name = NORTH LAKE CREEK PKWY  
Segment Limits = AVERY RANCH BLVD TO LAKELINE BLVD  
Type = Local Mobility  
Street Level = Level 2  
Improvement = New Roadway  
Project Description = The improvements include constructing a new roadway with all ages and abilities bicycle facilities and sidewalks.

### Change:

New Roadway. This new roadway has been identified as part of a new development.

### B-13: RALPH ABLANEDO DR - New Roadway



#### Details:

Name = RALPH ABLANEDO DR

Segment Limits = S CONGRESS AVE TO S IH 35 SVRD

Type = Local Mobility

Street Level = Level 2

Improvement = New Roadway

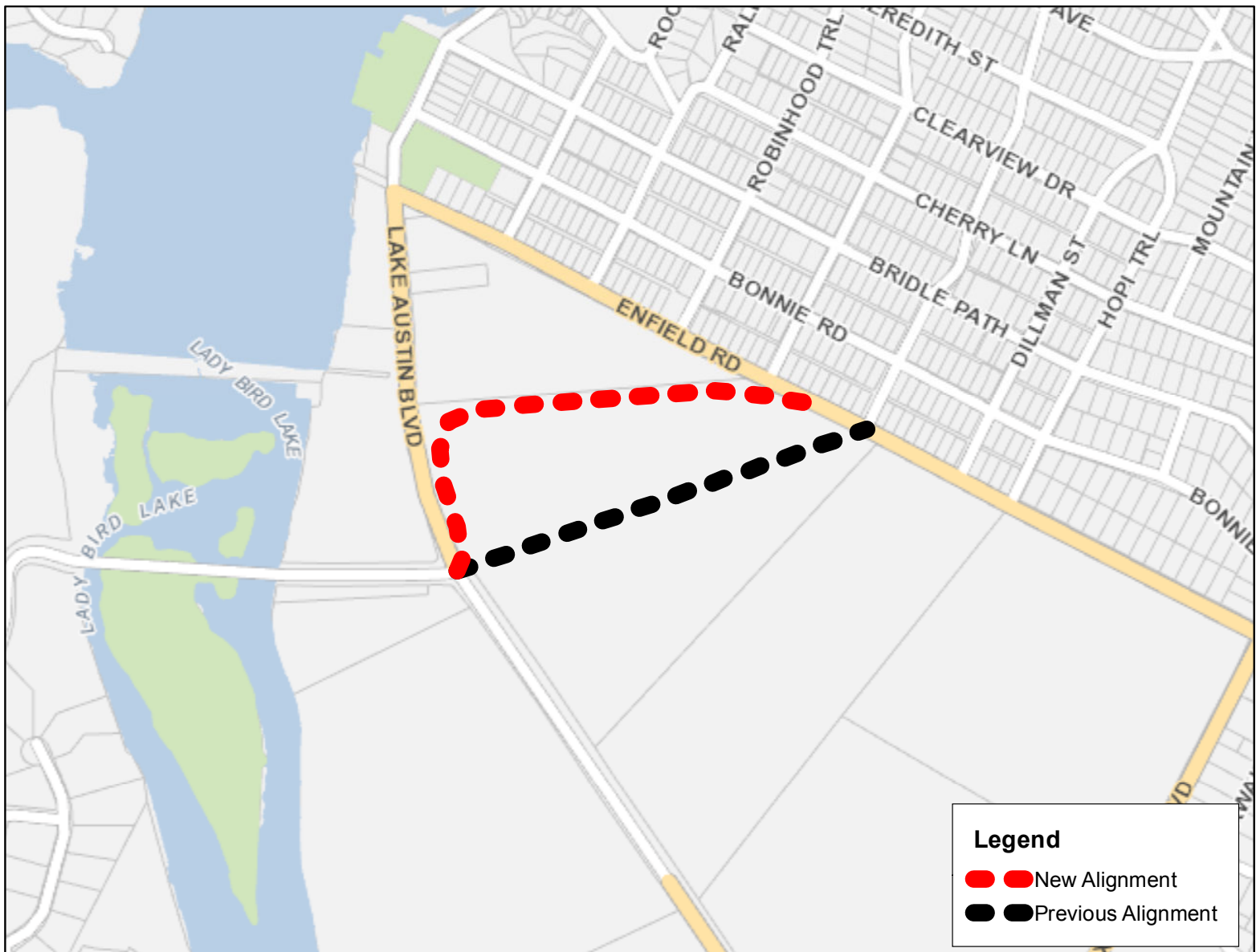
Project Description = The improvements include constructing a new roadway with all ages and abilities bicycle facilities and sidewalks.

#### Change:

New Roadway. This new roadway has been identified as part of a new development.



## B-13 REDBUD TRL-ENFIELD RD CONNECTOR - New Alignment



### Details:

Name = REDBUD TRL-ENFIELD RD CONNECTOR  
Segment Limits = REDBUD TRL TO ENFIELD RD  
Type = Corridor Mobility  
Street Level = Level 3  
Priority Network =  
Improvement = New Roadway  
Existing Cross Section = DNE  
Existing Number of Lanes = 0  
Future Cross Section = 3U  
Future Number of Lanes = 2  
Roadway Description = 2 travel lanes with a center turn lane  
Existing Bicycle Facility =  
Future Bicycle Facility = TBD  
Bicycle Description = all ages and abilities bicycle facilities  
Pedestrian Description =  
Project Description = The improvements include constructing a new roadway with all ages and abilities bicycle facilities and sidewalks.  
Mean ROW = 0  
Median ROW = 0  
Minimum ROW = 0  
Maximum ROW = 0  
Required ROW = 92  
ROW Remarks = Future Road. ROW assumed to be acquired for Ideal cross section.

### Change:

New Alignment



**Item B-14** Revised Growth Concept and Transit Priority Network Map

