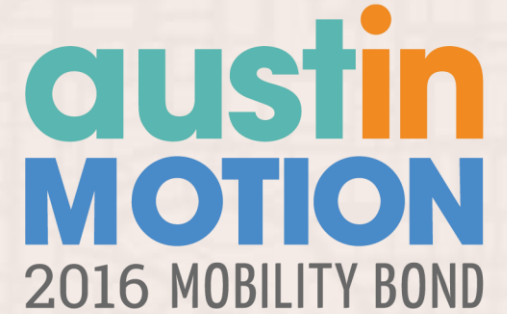
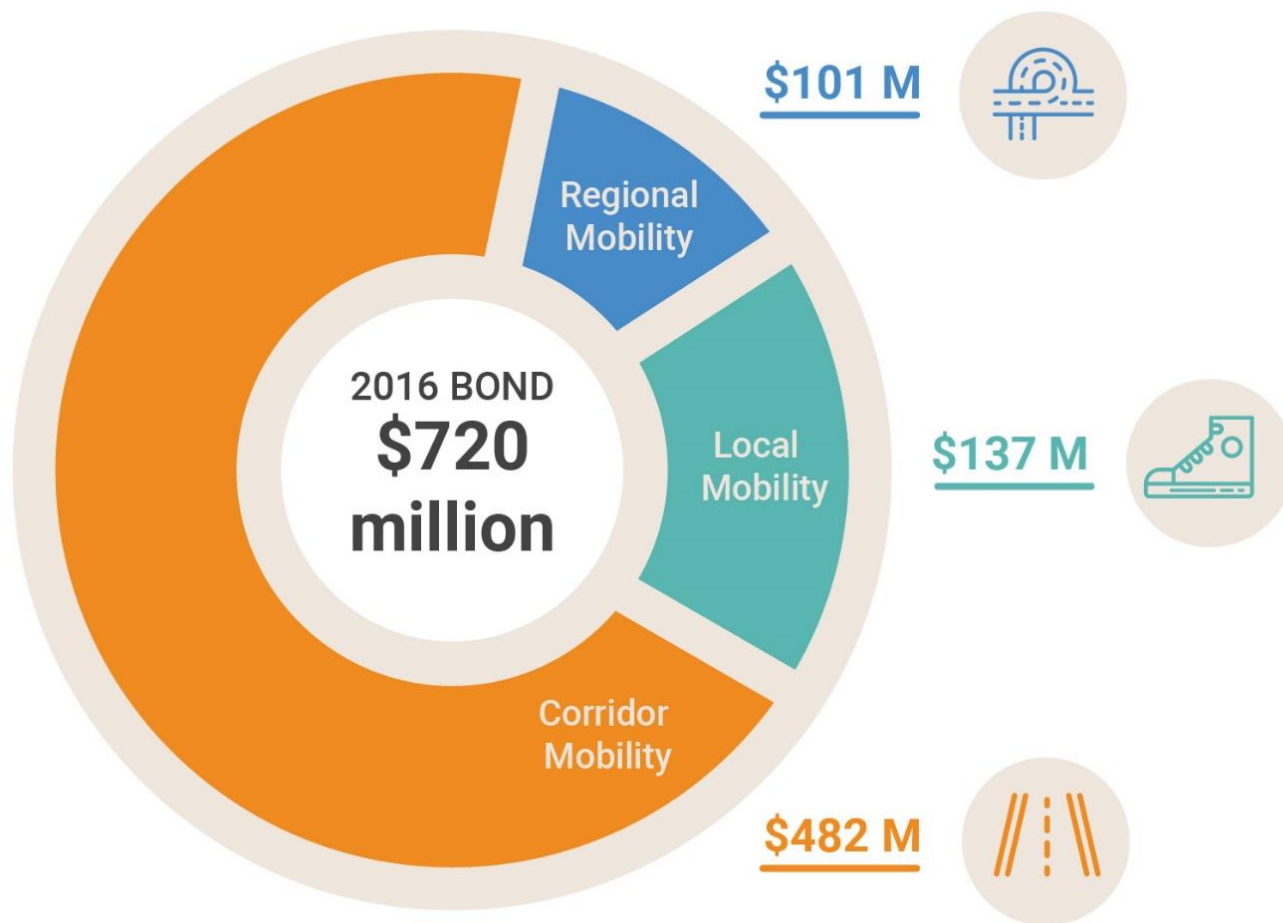


2016 MOBILITY BOND & CORRIDOR CONSTRUCTION PROGRAM

MOBILITY COMMITTEE MEETING
AUGUST 21, 2019

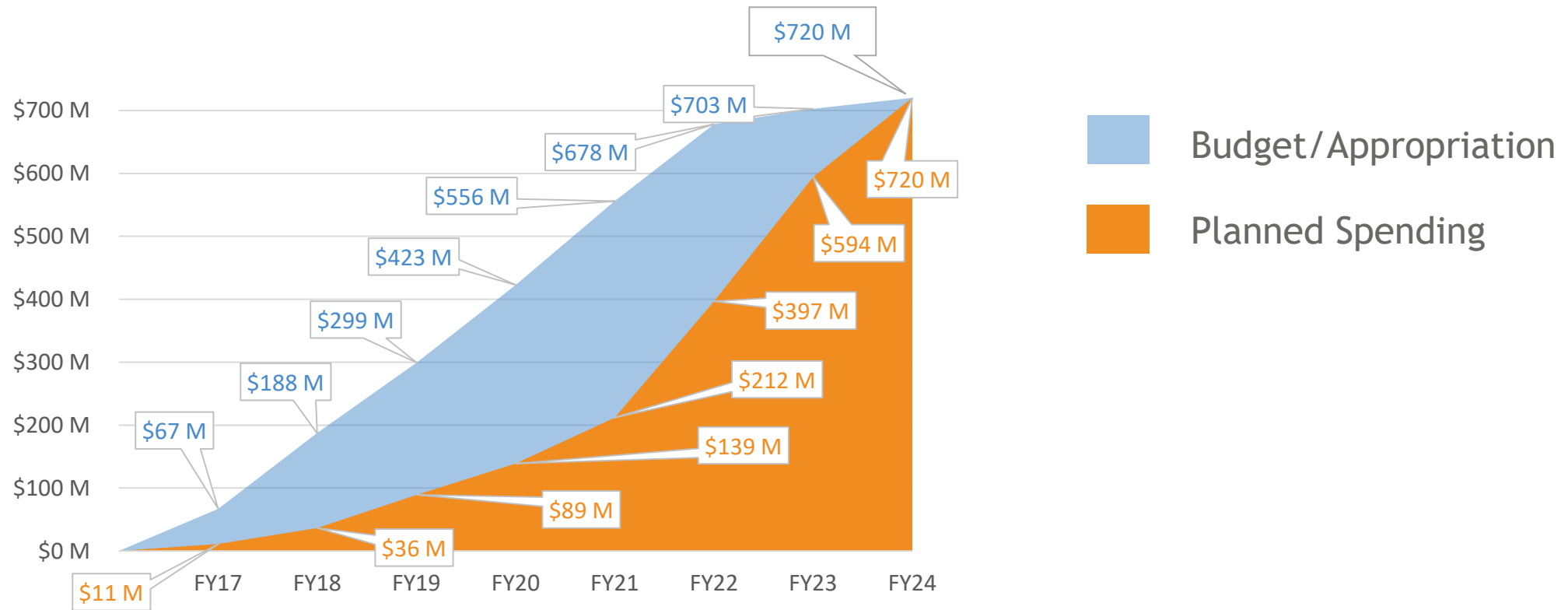


2016 MOBILITY BOND PROGRAM



2016 MOBILITY BOND

Program spending and schedule on track



PROGRAM HIGHLIGHTS

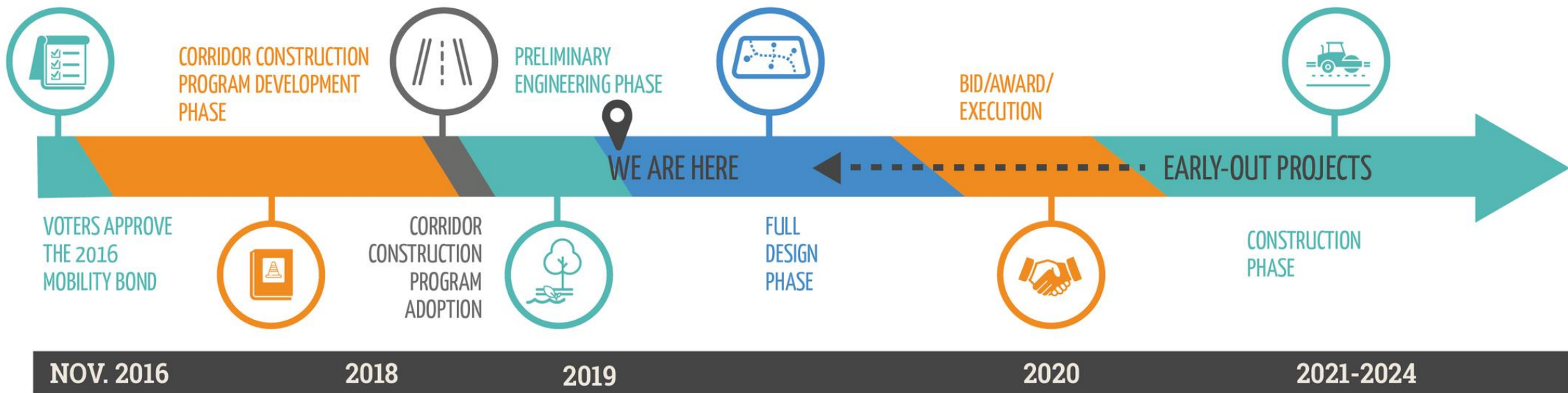
- 5 Vision Zero intersections
- 141 sidewalk projects constructed
- 20 bikeway projects
- 23 Safe Routes to School Projects
- 7 Urban Trails and trail connectors

Number of completed projects are based on data available as of July 2019 and are subject to change.



CORRIDOR CONSTRUCTION PROGRAM

CORRIDOR CONSTRUCTION PROGRAM



- Transitioning into full design phase
- Construction of first early-out projects already under way
- Accelerating next early-out projects for 2020 construction
- Ongoing coordination with partner departments and agencies
- Continuing outreach and engagement with the community, property owners and businesses
- Over half of the 35 action items in the MBE/WBE Action Plan completed or have commenced

ACCELERATED DELIVERY

- Executive level support and focus
- Robust coordination among programs
- Accelerated processes to meet eight-year goal
- Resources put to key areas of complexity, need
- Keeping community stakeholders engaged and informed
- Mitigate impacts on businesses and neighborhoods
- Stay focused on achieving mobility, community outcomes

EARLY-OUT PROJECTS

- Guadalupe and Lavaca transit improvements
- West Campus sidewalk improvements
- Slaughter Lane safety improvements
- Signal upgrades on all corridors
- North Lamar intersection improvements
- Burnet Road sidewalks



Left: Contraflow lane, Guadalupe and Lavaca Street transit improvements;
Below: Burnet Road pedestrian improvements



POTENTIAL NEXT EARLY-OUT PROJECTS

- Burnet Road intersections (Koenig, Braker)
- South Lamar enhanced multimodal improvements
- North Lamar Boulevard and East Riverside Drive
 - Critical Safety and Mobility Improvements
- CAMPO-funded projects
 - William Cannon
 - Slaughter Lane

*Based on initial preliminary engineering analysis, further design and analysis required to be confirmed

FULL DESIGN PHASE ACTIVITIES

- Finalizing environmental reviews and processes
- Initiating Right of Way/Access Mgmt processes
- Continuing coordination with utilities (private, public)
- Developing drainage mitigation, water quality plans
- Initial project phasing and sequencing; procurement planning
- Permitting process for projects (Development Services)
- Corridor Prep Course as part of MBE/WBE Action Plan
- Continued inter-agency coordination: TxDOT, CapMetro
- Developing Business Success Strategy

CREATING A VISION FOR PLACEMAKING/ PLACEKEEPING



Christine Angelone &
Alexander Bingham AIPP
2016



ATD's "Creative Crosswalks," like this one on Lake
Austin Blvd, increase safety and visibility of
pedestrians.

QUESTIONS?