



# OUR PARKS, OUR FUTURE

## **LONG RANGE PLAN**

### PRESENTATION TO AUSTIN CITY COUNCIL

OUR PARKS  
OUR FUTURE



AUSTIN PARKS & RECREATION  
LONG RANGE PLAN

2018 - 2028



**AUSTIN  
PARKS  
FOUNDATION**

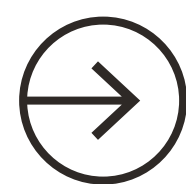




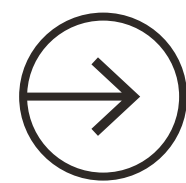


# A REVIEW OF THE LONG RANGE PLAN

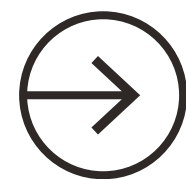
---



## PROJECT BACKGROUND & TEAM



## MAJOR PHASES OF WORK

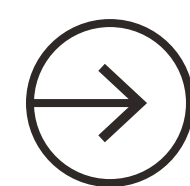


## DRAFT PLAN RECOMMENDATIONS OVERVIEW



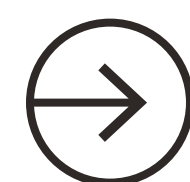
OUR PARKS, OUR FUTURE  
LONG RANGE PLAN

## PURPOSE AND GOALS



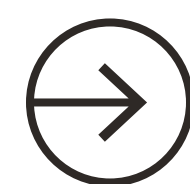
### ASSESS STATE OF CURRENT PARK SYSTEM

Conduct a thorough assessment of the condition and quality of the current park system to provide a strong data-driven baseline to inform prioritization and track implementation progress over time.



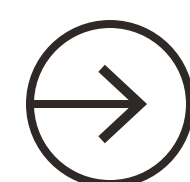
### VISION FOR AUSTIN'S PARK SYSTEM

The planning process should focus on engaging the community and city staff to define a new vision that is both inspirational and achievable.



### GUIDE FUTURE GROWTH AND DEVELOPMENT

As Austin continues to grow and change, the Long Range Plan provide a careful analysis and guidebook for how and where to invest to ensure a stronger park system.



### PARK SYSTEM RECOMMENDATIONS

Include both citywide strategies and planning area priorities to inform the Capital Improvement Plan and development of Park Master Plans.

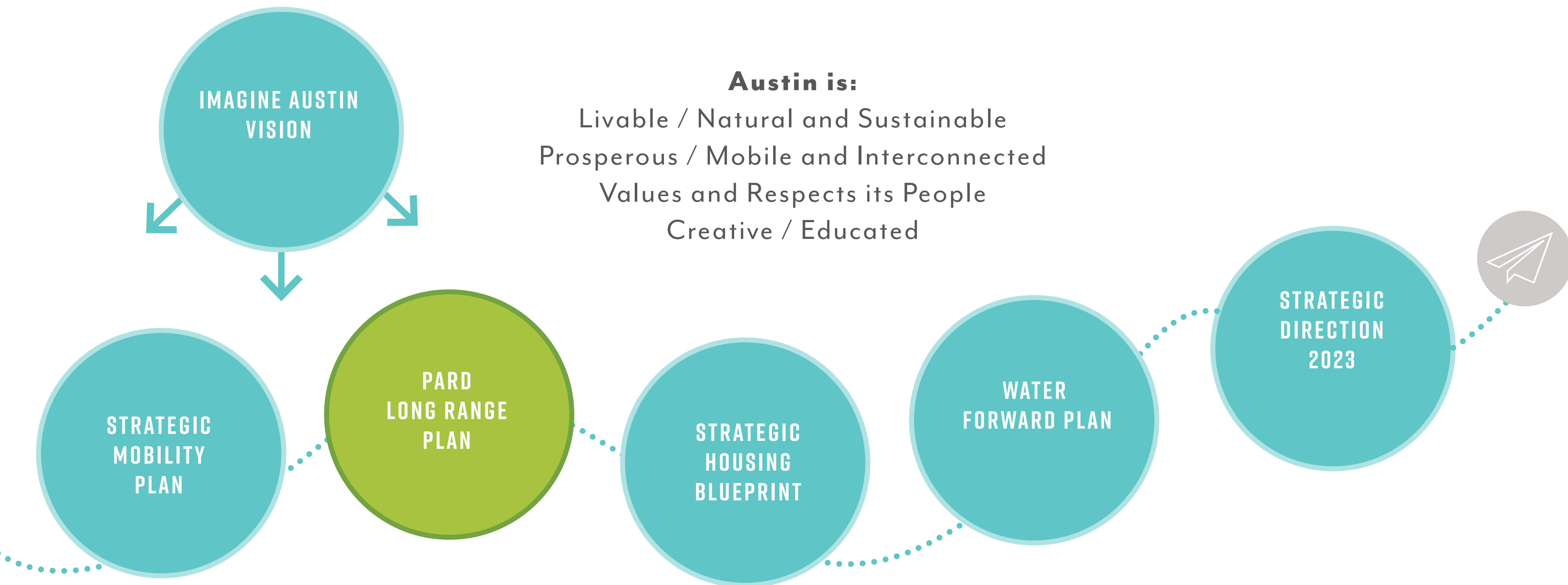
RELATIONSHIP TO OTHER

## CITYWIDE PLANS

---

**Austin is:**

Livable / Natural and Sustainable  
Prosperous / Mobile and Interconnected  
Values and Respects its People  
Creative / Educated



A LOOK AT THE PARK SYSTEM  
**TODAY**

JUST SOME OF THE FACILITIES

291

PARKS

6

GOLF COURSES

15+

PUBLIC/PRIVATE PARTNERSHIPS

47

VOLLEYBALL COURTS

40

POOLS

26

RECREATION/SENIOR GARDENS

124

TENNIS COURTS

24

HISTORIC BUILDINGS

227

TRAIL MILES

147

PLAYGROUNDS

13

OFF-LEASH DOG AREAS

5

CEMETERIES

20

REC CENTERS

11

MUSEUMS, ARTS & CULTURAL CENTERS

10

STAGES/ AMPHITHEATERS

78

MIXED-USE FIELDS

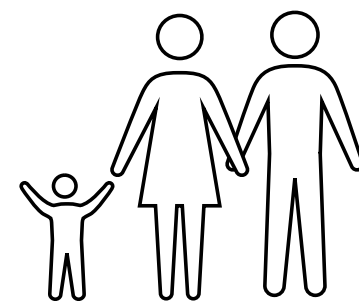


100-YEAR ANNIVERSARY OF PARD (2028)



19,000+

ACRES OF MANAGED PARKLAND



967K → 1.143M

POPULATION IN 2018\*

PROJECTED POPULATION IN 2030\*

700+

FT EMPLOYEES



1,000+

PT & SEASONAL

KEY METRICS

SOURCE: AUSTIN PARKS AND RECREATION DEPARTMENT FY18 ANNUAL REPORT AND STRATEGIC PLAN 2017-2021; \*FROM AUSTIN AREA POPULATION HISTORIES AND FORECASTS

OUR PARKS  
OUR FUTURE

AUSTIN PARKS & RECREATION  
LONG RANGE PLAN

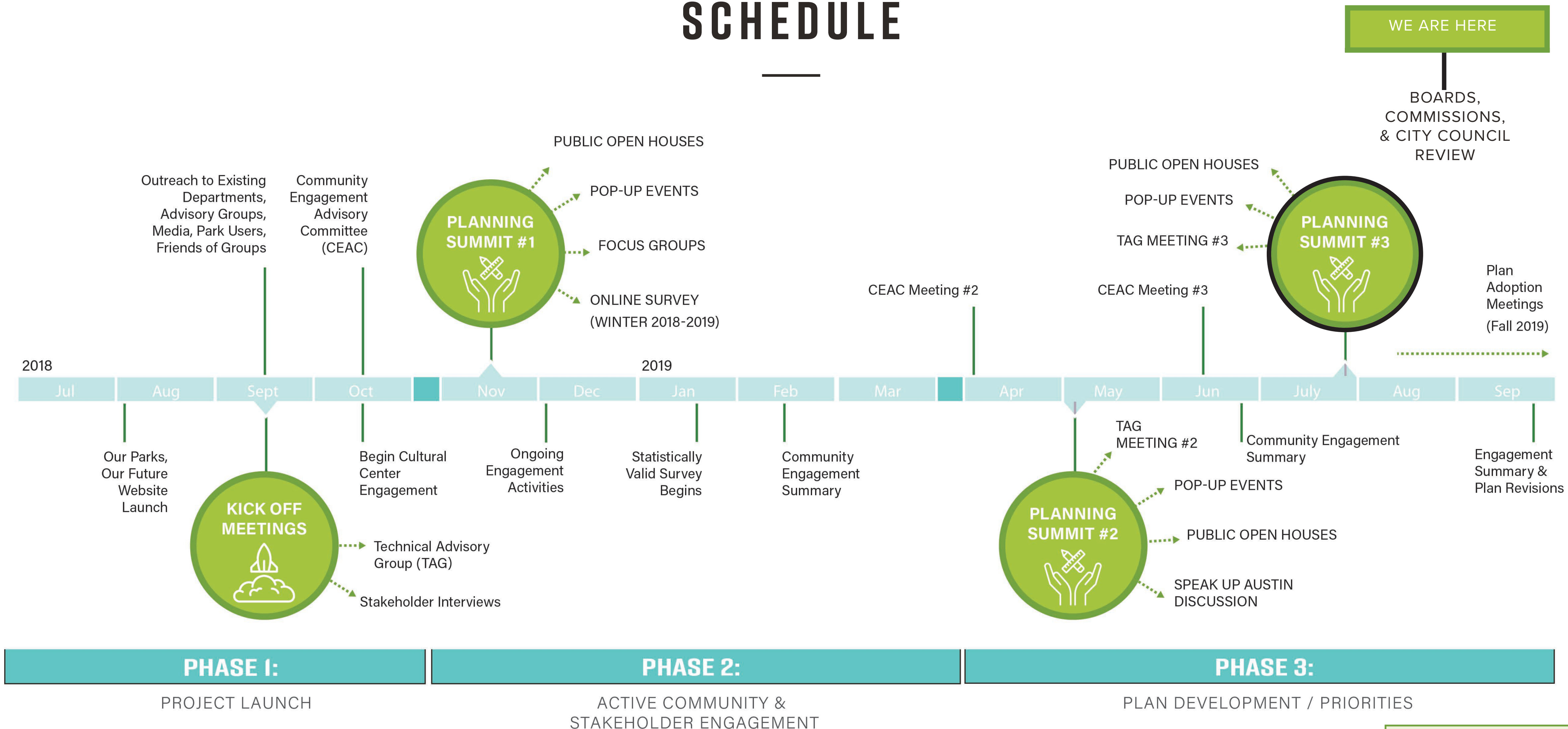
2018 - 2028





## LONG RANGE PLAN

## SCHEDULE





REACHING OUT &  
**ENGAGING  
THE PUBLIC**



**OPEN HOUSES**  
400+ PARTICIPANTS



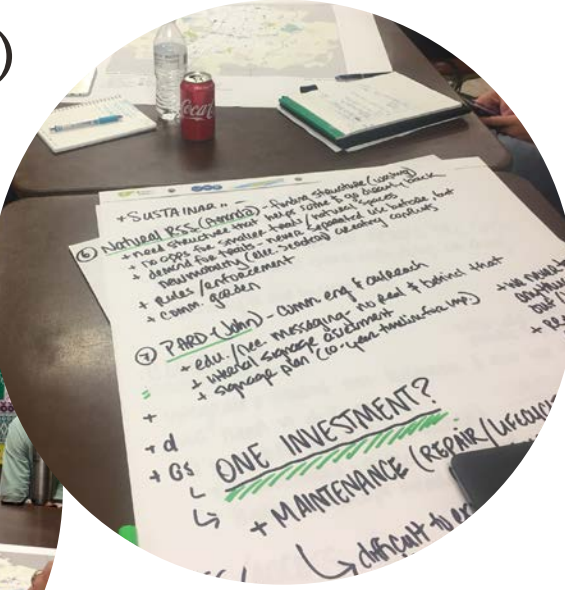
TEXT "SURVEY" TO (512) 580-887  
VISIT [AUSTINFUTUREPARKS.ORG/S](http://AUSTINFUTUREPARKS.ORG/S)

**SURVEYS, WEBSITE & SOCIAL MEDIA**  
925 STATISTICALLY VALID SURVEY RESPONSES  
4,400+ COMMUNITY SURVEY RESPONSES  
9,000+ COMMUNITY SURVEY COMMENTS

**COMMUNITY  
ENGAGEMENT  
ADVISORY  
COMMITTEE  
(CEAC)**



**PARK TOUR  
& FOCUS  
GROUPS**



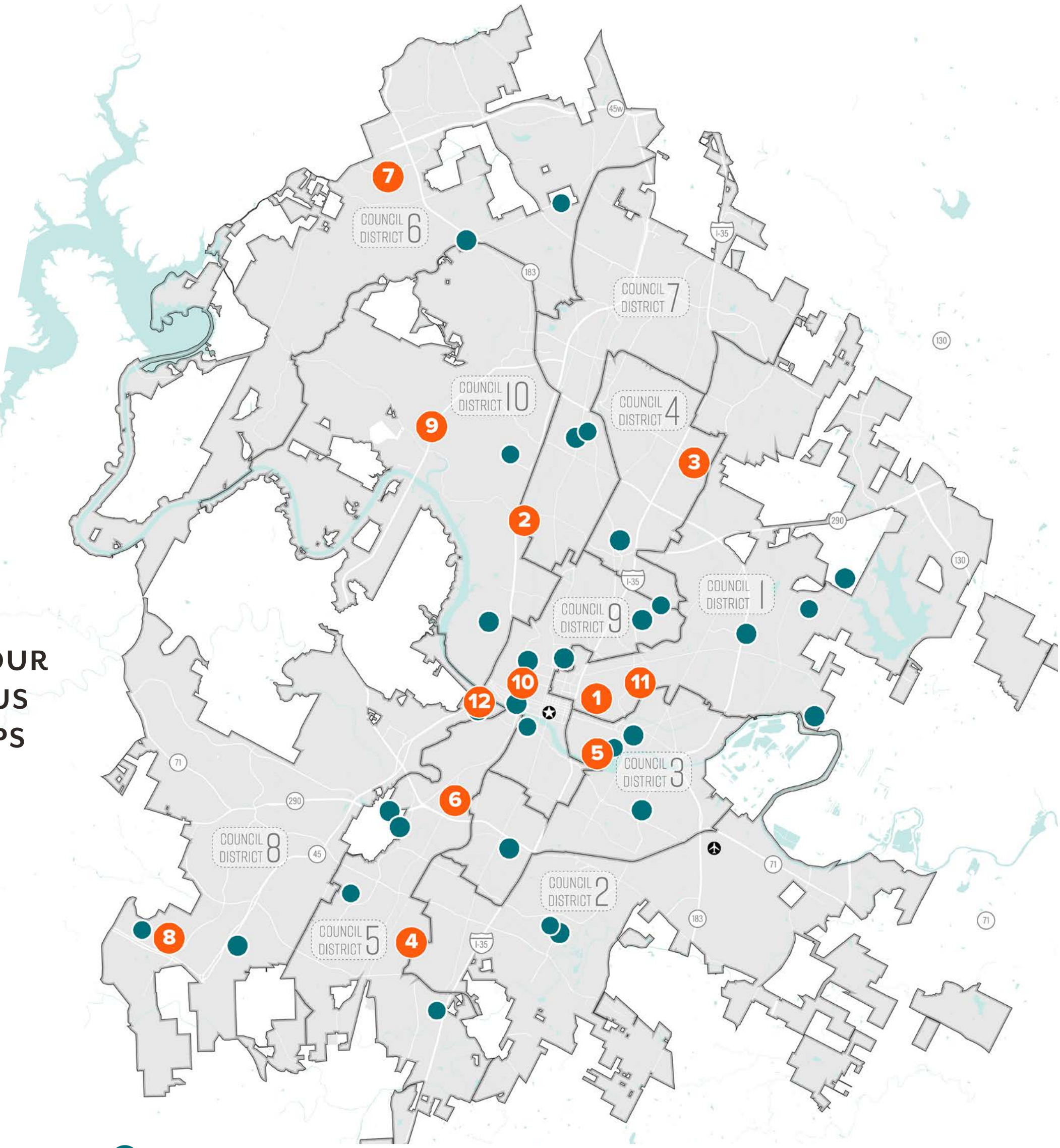
**TECHNICAL  
ADVISORY  
GROUP (TAG)**



**POP-UP EVENTS**  
32 EVENTS ATTENDED  
545+ VISITORS ENGAGED



**ENGAGING KIDS  
THROUGH ART**



● Pop-Up Locations  
# Community Meetings



## OUR PARKS, OUR FUTURE

# COMMUNITY THEMES

---

Ten themes emerged from the numerous community engagement events and surveys completed as part of this planning process. Those themes along with the priority needs and citywide analysis form the basis of the system-wide recommendations to follow.

### NATURAL EXPERIENCES

People express a desire for parks that feel more natural. This includes undeveloped, wild natural spaces, rustic finishes instead of paved areas and more native plants.

### UNSTRUCTURED SPACES

In general, people care less about spaces for specific programming, opting for more multi-use spaces and preserving green, natural and open spaces.

### GREEN INFRASTRUCTURE

Proactively use green infrastructure in parks to build a more resilient city. This includes stormwater management, flood protection, heat island effect mitigation, drought tolerance, and native planting/habitat areas.

### LINEAR PARKS & TRAILS

People are more interested in parks that allow them to move (walk/run/bike) as opposed to staying in one place. There is an interest in nature and multipurpose trails within PARD parks as well as connectivity between parks along urban trails.

### PROXIMITY & ACCESS

People are concerned about both the lack of parks near them and/or their ability to get to parks. This includes walkability issues, lack of adequate parking and the lack of public transit access.

### URBAN SPACES

People express a concern that existing parkland in high-density urban areas exists already at critical locations, but are underutilized. The desire is for a renewed commitment to well-maintained green spaces and enhanced programming in urban parks in high-density areas.

### PARKS & ARTS/CULTURE

People express a desire for increased arts/culture programming in parks. This includes increased community-focused programming and more cultural centers that could host these kinds of programs.

### EDUCATIONAL OPPORTUNITIES

People are interested in more hands-on educational opportunities. This includes youth education, art-based education and summer camps.

### INCLUSIVITY

People express a desire for parks and programming to be more inclusive. This includes more publicity about activities, reducing fees that prevent low-income residents from participating, addressing language access, increasing multi-generational programs and spaces, and ensuring cultural diversity in programming.

### CLEANLINESS & SAFETY

People are concerned that parks are not being adequately taken care of. This includes issues around lighting, shade, maintenance, recycling, bathrooms, off-leash dog areas and dog waste disposal. People also expressed concern about the issue of homelessness on many dimensions – safety, park cleanliness, humanitarian - and saw an opportunity to work with homeless population to improve park cleanliness & safety.

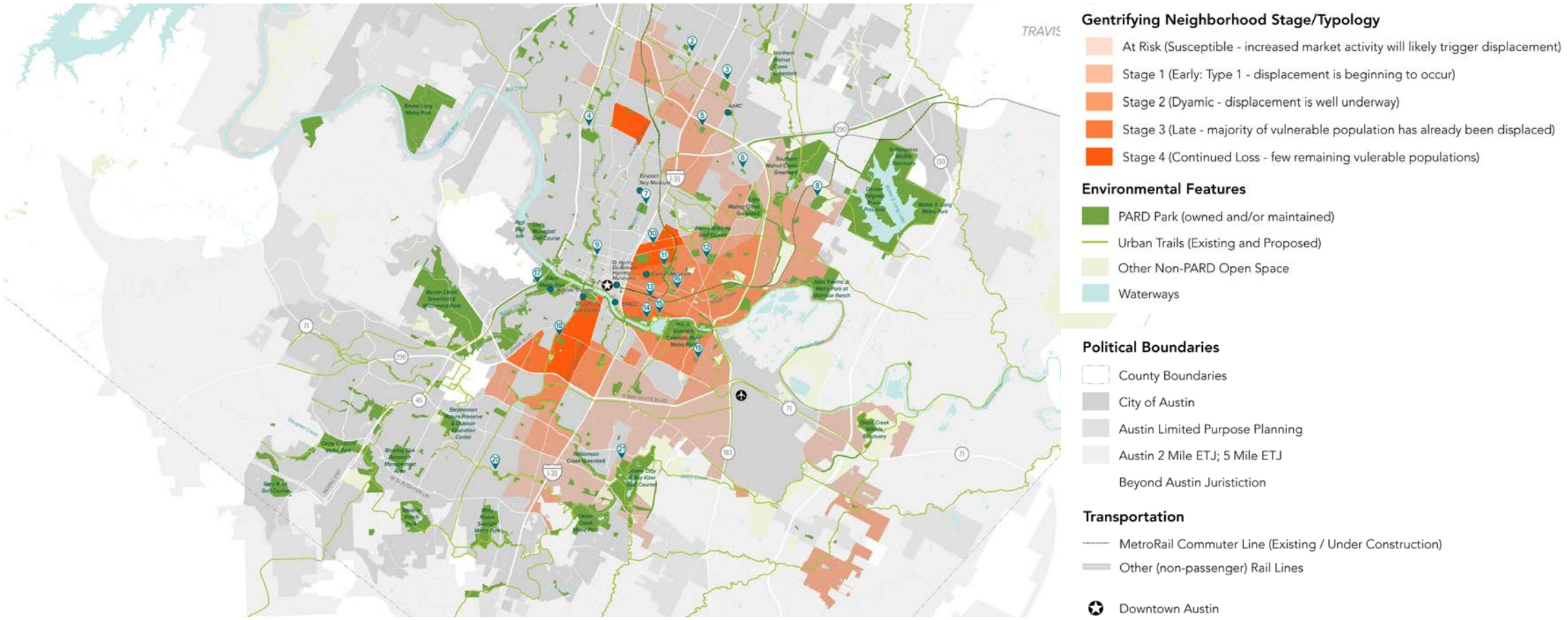


OUR PARKS, OUR FUTURE

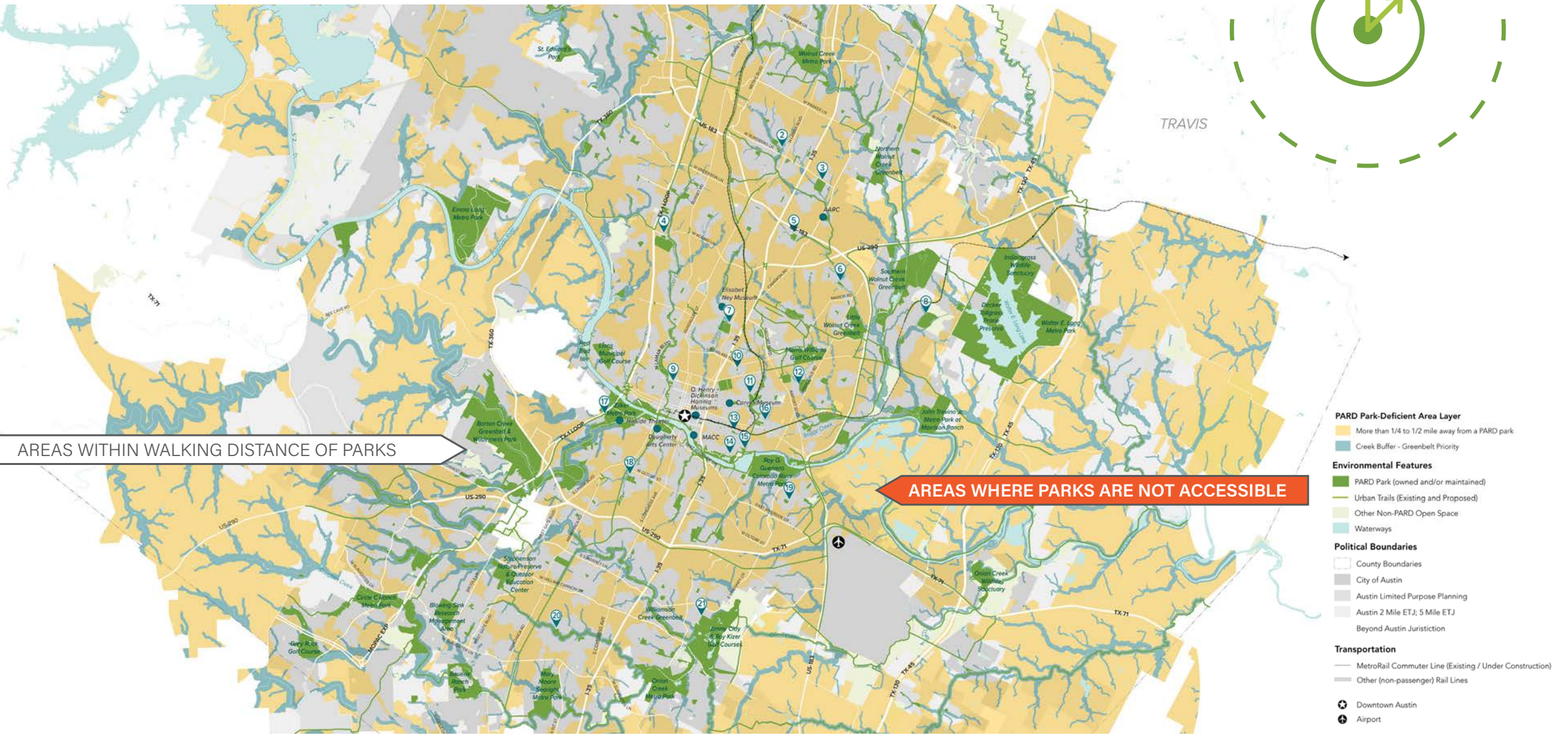
# GROWTH & PARK NEED ANALYSIS



▲ **AUSTIN'S PROPOSED URBAN TRAIL NETWORK**  
BASED ON STRATEGIC MOBILITY PLAN RECOMMENDATIONS



▲ **MAPPING OF DISPLACEMENT RISK**

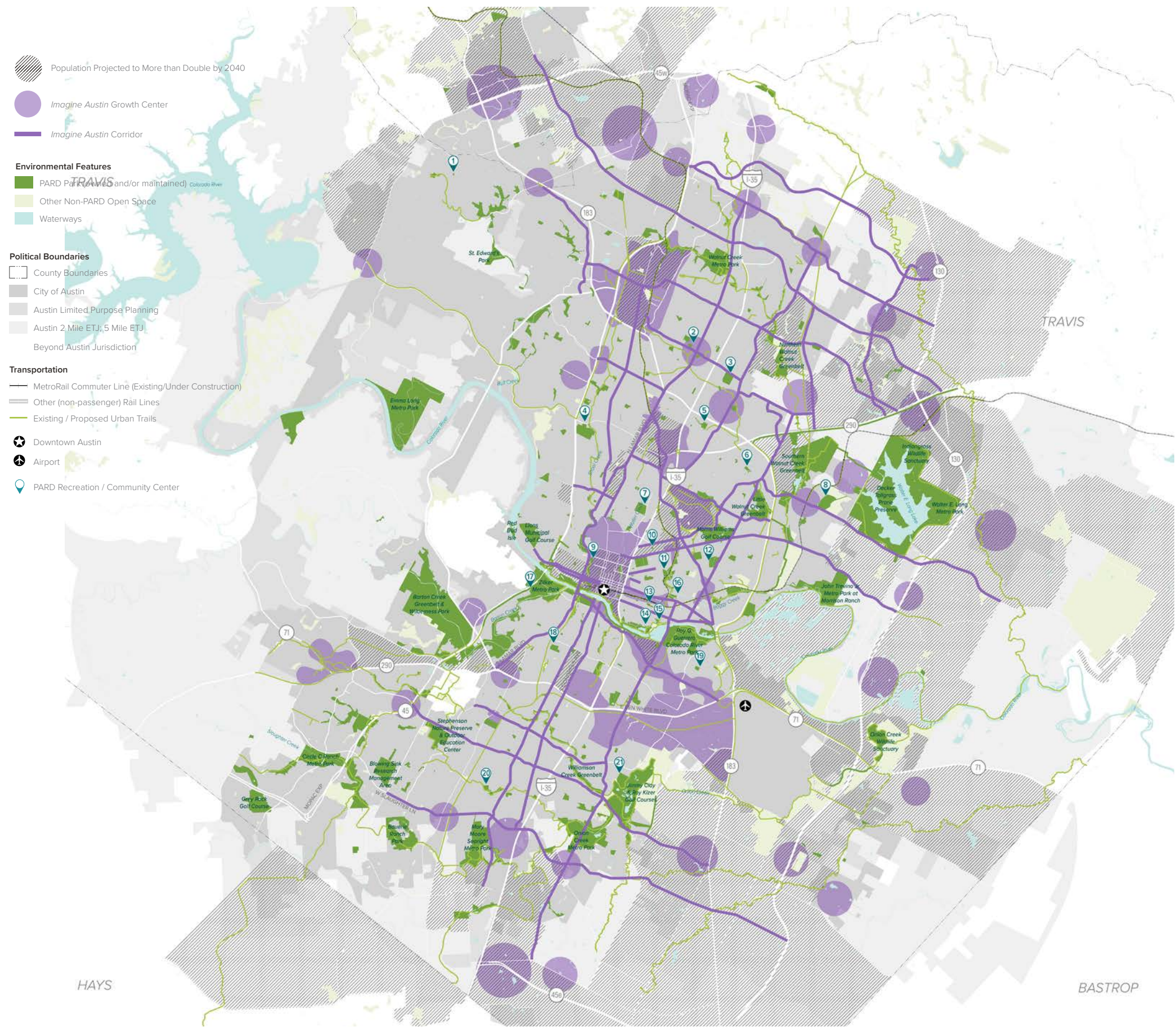


▲ **MAPPING OF PARK ACCESS BY FOOT**

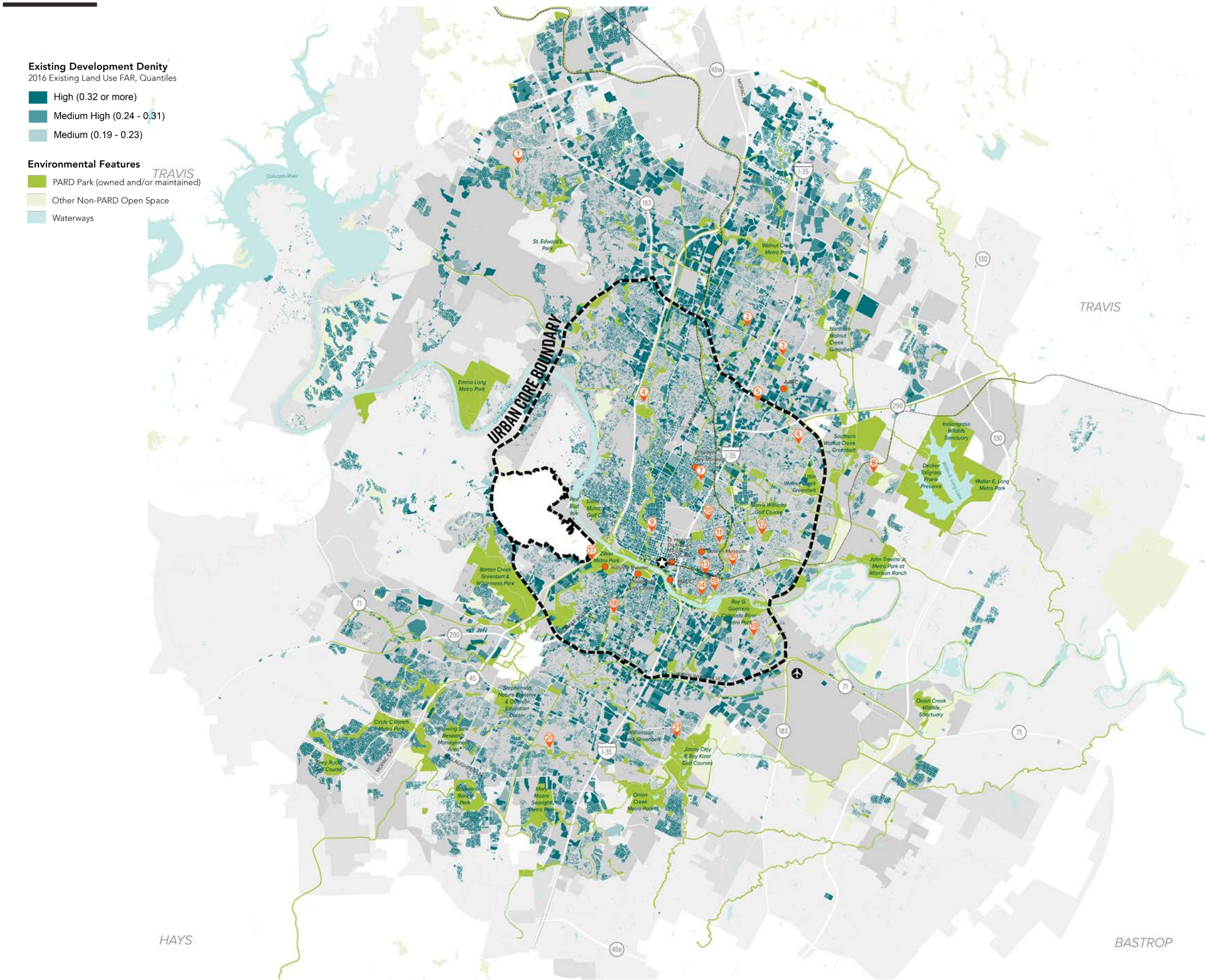


OUR PARKS, OUR FUTURE

# GROWTH & PARK NEED ANALYSIS



▲ PROACTIVE PARK PLANNING IN HIGH GROWTH AREAS



▲ AUSTIN'S HIGHLY DEVELOPED AREAS

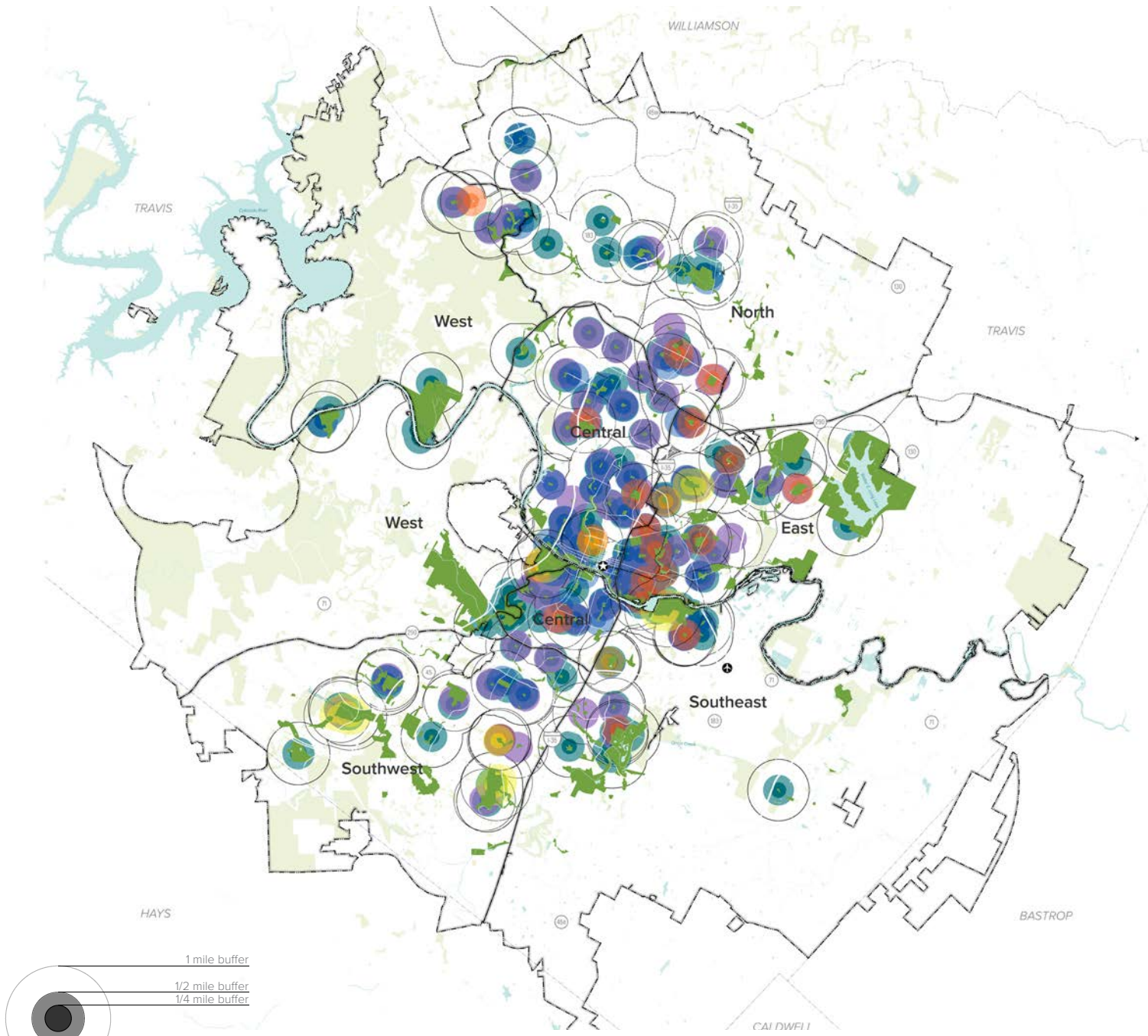


ACTIVE RECREATION

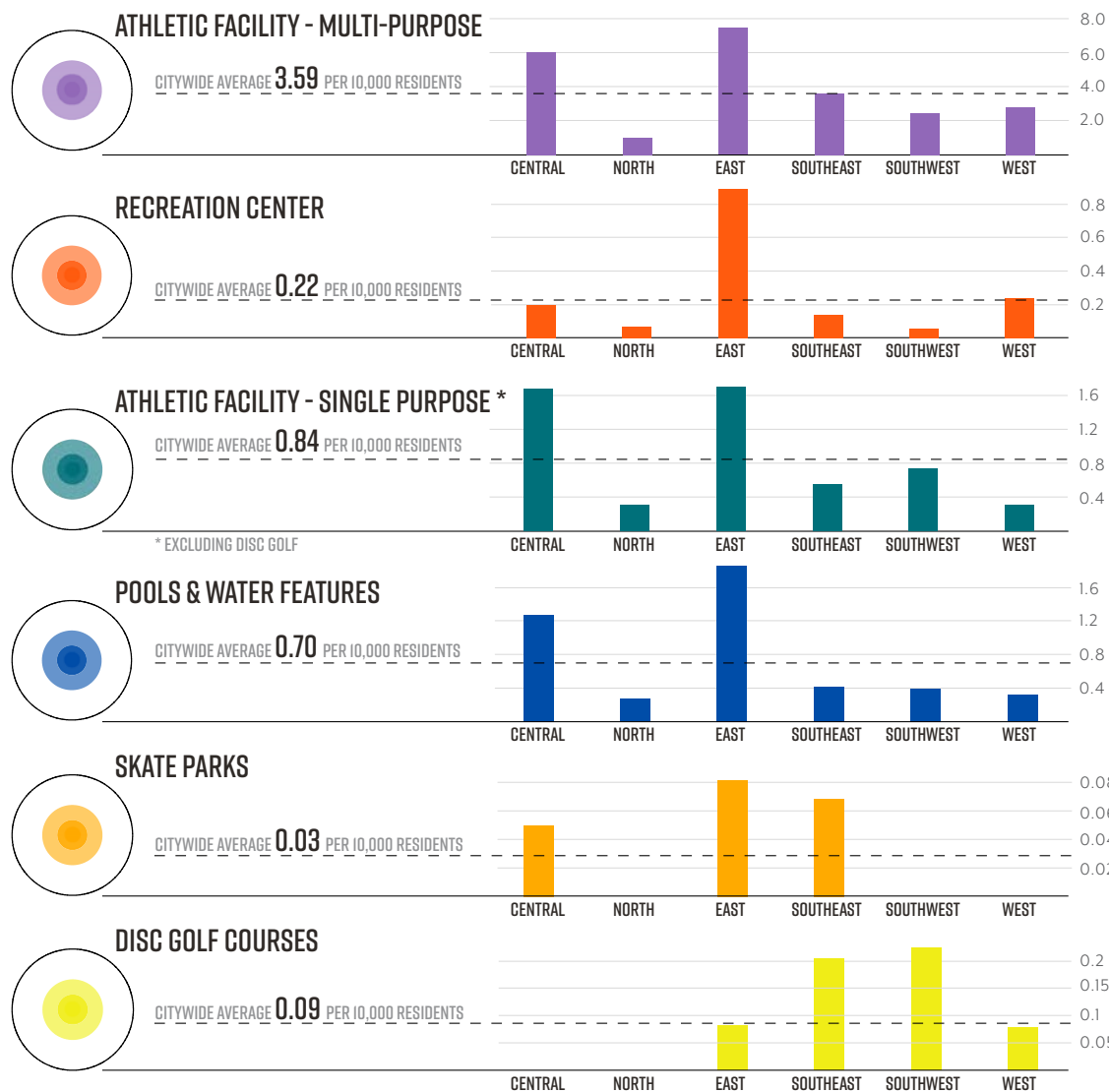
OUR PARKS, OUR FUTURE  
FACILITY DISTRIBUTION  
ANALYSIS

PASSIVE RECREATION

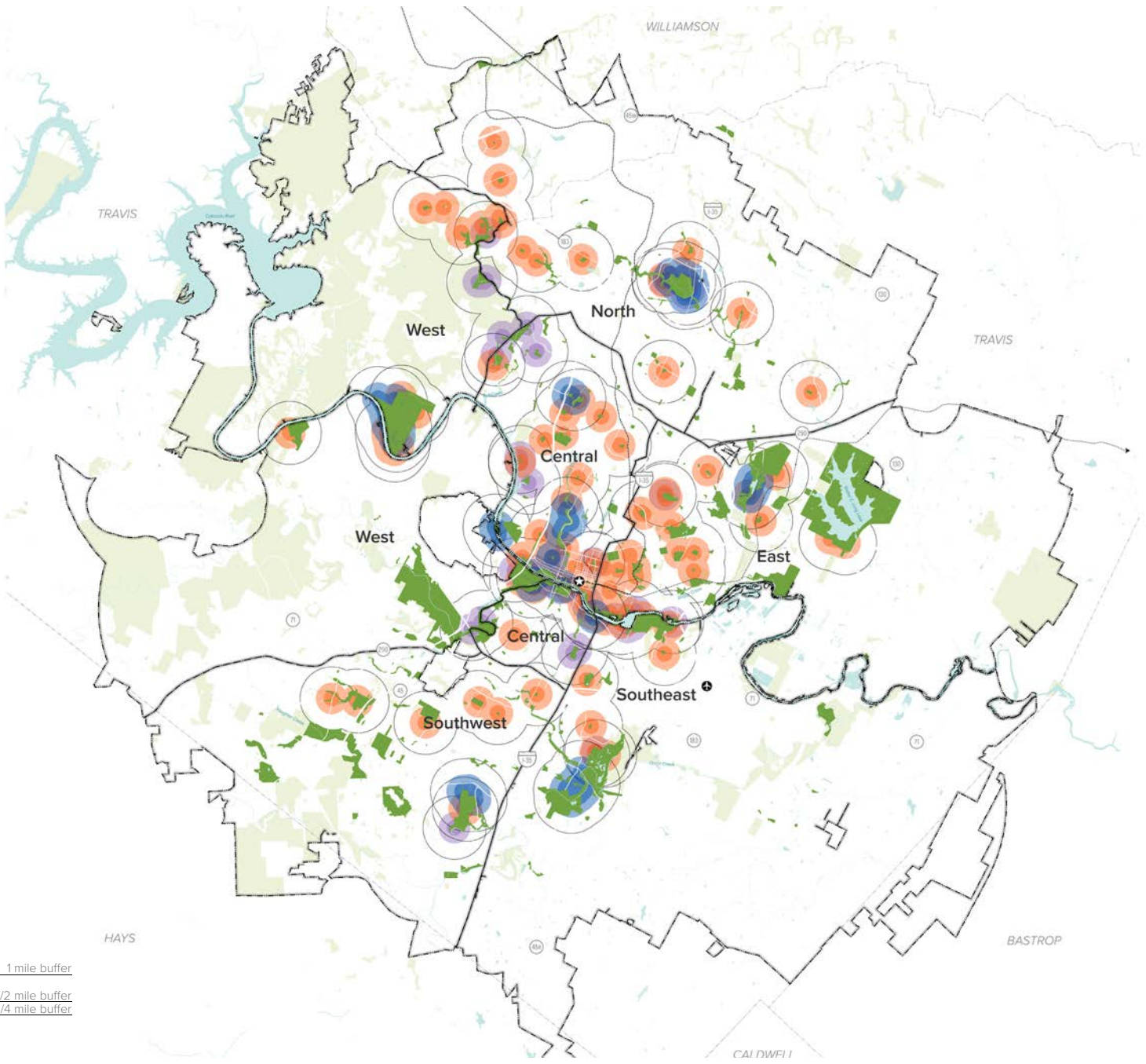
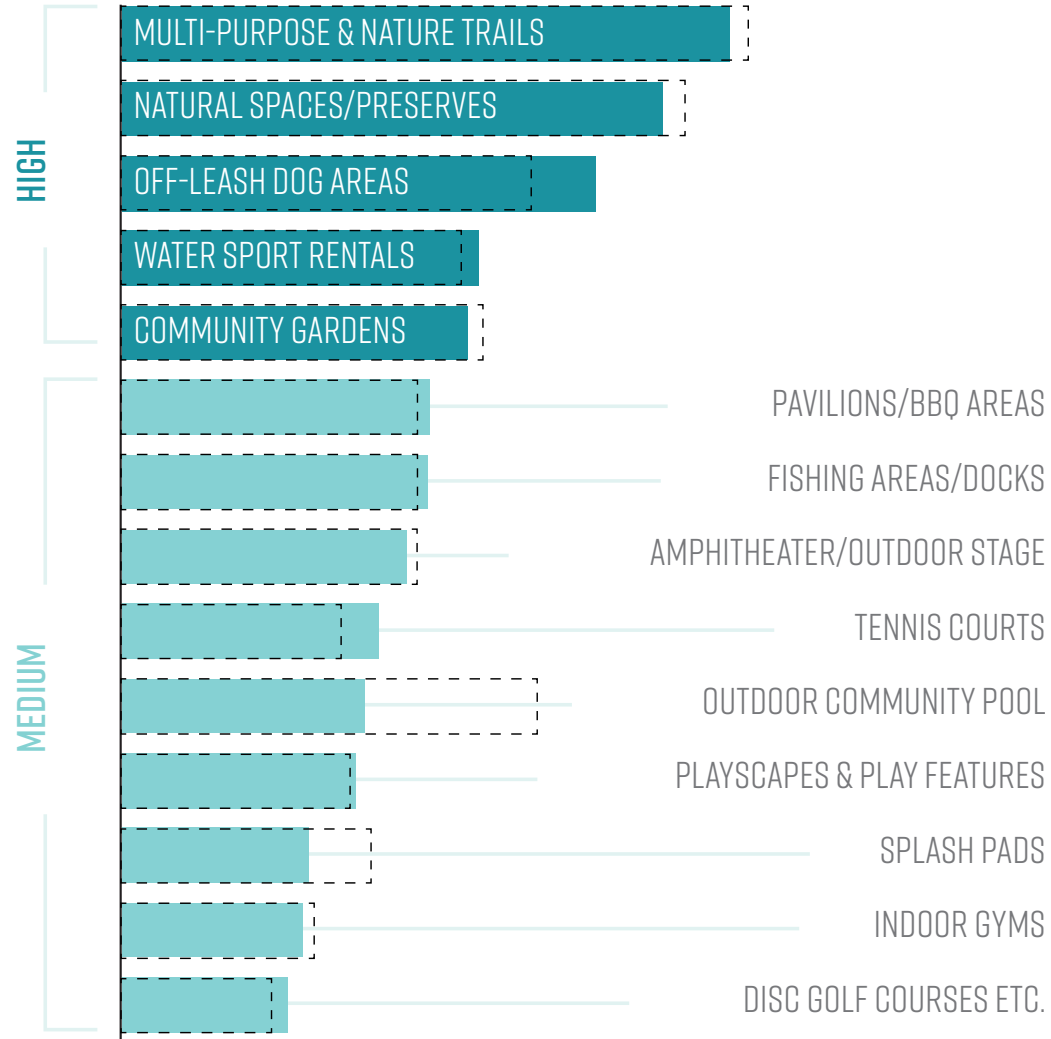
◀ ANALYSIS OF ACCESS  
TO AMENITIES AND  
PRIORITY NEEDS  
BY COMBINED  
PLANNING AREA ▶



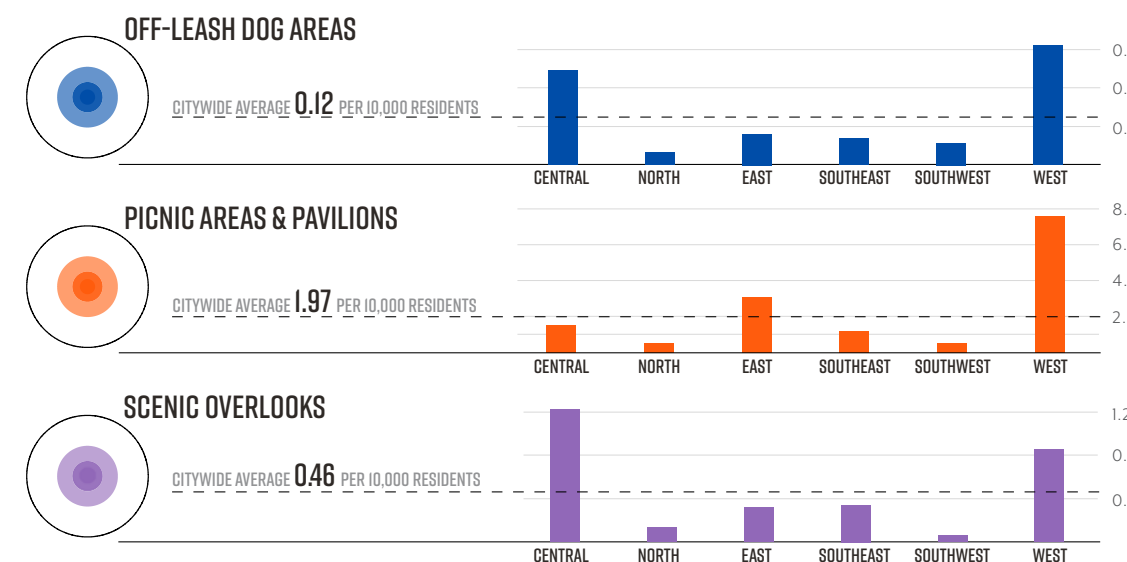
- Environmental Features**
- PARD Parks (owned and/or maintained)
  - Other Non-PARD Open Space
  - Waterways
- Political Boundaries**
- County Boundaries
- Transportation**
- MetroRail Commuter Line (Existing/Under Construction)
  - Other (non-passenger) Rail Lines
  - Downtown Austin
  - Airport



Facility & Amenity Priorities



- Environmental Features**
- PARD Parks (owned and/or maintained)
  - Other Non-PARD Open Space
  - Waterways
- Political Boundaries**
- County Boundaries
- Transportation**
- MetroRail Commuter Line (Existing/Under Construction)
  - Other (non-passenger) Rail Lines
  - Downtown Austin
  - Airport



◀ SURVEY PRIORITIES  
FOR THE CENTRAL  
PLANNING AREA



OUR PARKS, OUR FUTURE

## CITYWIDE STRATEGIES

---



**A.** ENSURE PARKS ACT AS A **RELIEF FROM URBAN LIFE**



**B.** EXPAND AND IMPROVE **PARK ACCESS** FOR ALL



**C.** ACTIVATE AND ENHANCE **URBAN PUBLIC SPACES**



**D.** **ALIGN PROGRAMS** WITH COMMUNITY INTEREST



**E.** OPTIMIZE AND IMPROVE **EFFICIENCY OF OPERATIONS**



A

# ENSURE PARKS ACT AS A RELIEF FROM URBAN LIFE

ASEGURAR QUE LOS PARQUES SEAN ALIVIO EN EL AMBIENTE URBANO



The impact of Austin's rapid growth is becoming apparent as Austinites increasingly confront the loss of natural areas and increased development. PARD has to guard the park system's role as a relief from and counterpoint to Austin's increasingly urban context. Likewise, the parks must become more flexible and multi-purpose to support a higher intensity and wider variety of park users.

## COMMUNITY ENGAGEMENT THEMES

- ☒ NATURAL EXPERIENCES
- ☒ UNSTRUCTURED SPACES
- ☒ GREEN INFRASTRUCTURE
- ☐ LINEAR PARKS & TRAILS
- ☐ PROXIMITY & ACCESS
- ☐ URBAN SPACES
- ☐ PARKS & ARTS/CULTURE
- ☒ EDUCATIONAL OPPORTUNITIES
- ☐ INCLUSIVITY
- ☐ CLEANLINESS & SAFETY

1.

Add between 4,000 and 8,000 acres of new parkland over the next 10 years, maintaining the current park acres standard of 20 acres/1,000 residents while striving to achieve 24 acres/1,000 residents.

2.

Protect and increase natural areas that support **immersive nature experiences** and provide space and management for **environmental functions and benefits**.

3.

Make it easier for Austinites to spend time **interacting with water** (e.g. recreational facilities like outdoor pools and access to natural water bodies like lakes and creeks).

4.

Increase the number of **community gardens**.

5.

Invest in **multi-purpose, unstructured spaces** capable of supporting **flexible uses**. Park elements like small plazas or pavilions with electrical/water hookups, moveable furniture, and multi-purpose athletic fields allow for informal use of space while maintaining a natural, open feel.

6.

Provide **dedicated off-leash dog areas** in appropriate locations to ensure both dog-owners and non-dog-owners can enjoy parks.

7.

Protect and manage natural areas to intentionally **balance recreational use with environmental protection**.



## B

## EXPAND &amp; IMPROVE PARK ACCESS FOR ALL

## EXPANDIR Y MEJORAR ACCESO A LOS PARQUES PARA TODOS



Providing equitable access to parkland for all residents is a priority for PARD. Through the Long Range Plan process some community members commented on the difficulty of accessing and navigating the park system. There are multiple tools that can be used to improve park access including expanded trail connections, improved wayfinding, and greater sensitivity to ADA standards.

## COMMUNITY ENGAGEMENT THEMES

- ☒ NATURAL EXPERIENCES
- ☐ UNSTRUCTURED SPACES
- ☐ GREEN INFRASTRUCTURE
- ☒ LINEAR PARKS & TRAILS
- ☒ PROXIMITY & ACCESS
- ☒ URBAN SPACES
- ☐ PARKS & ARTS/CULTURE
- ☒ EDUCATIONAL OPPORTUNITIES
- ☒ INCLUSIVITY
- ☐ CLEANLINESS & SAFETY

1.

Prior to any significant master plan or development, work with partner organizations and current and long-time residents to ensure **community involvement** in the process.

2.

Invest in the acquisition of new parkland that can **make parks a part of everyday life** in existing and future **underserved areas**.

3.

Increase the number of entrances to existing parks in order to expand the number of residents within **walking distance of a park**.

4.

Increase **multi-use and nature trails** within the existing PARD park system and continue to acquire land for linear parks and greenbelts that can accommodate larger **trail systems**.

5.

Support the efforts of the Austin Strategic Mobility Plan, City departments, and partners in advancing the **mobility network** beyond the PARD park system.

6.

Achieve a more **even distribution of facilities** that have a strong citywide interest.

7.

Aspire to provide **universal access** (e.g. all ages, all abilities). Park spaces should be accessible, to the greatest extent feasible, by everyone regardless of age, ability, or language. Strive to create **equal access** for all Austinites by reducing barriers to use.

8.

Improve **signage** and **wayfinding** markers at entrances and along trails to help park users navigate with confidence.

9.

Improve the **web-based information** describing the park system to help people quickly find the amenities and experiences they are seeking.

10.

Work with Austin Transportation to evaluate the need and appropriate fee structure for **private automobile parking areas**.



## C

# ACTIVATE & ENHANCE URBAN PUBLIC SPACES

## AVIVAR Y REALZAR LOS ESPACIOS PÚBLICOS URBANOS



The strength of Austin's park system has historically revolved around the iconic natural features and large parks; however, its downtown squares and urban parks have been overlooked and underestimated. These spaces can be activated to extend the benefits of parks to more people through a flexible, partnership-centric approach that expands and enhances use of our public spaces.

### COMMUNITY ENGAGEMENT THEMES

- ☐ NATURAL EXPERIENCES
- ☐ UNSTRUCTURED SPACES
- ☐ GREEN INFRASTRUCTURE
- ☐ LINEAR PARKS & TRAILS
- ☒ PROXIMITY & ACCESS
- ☒ URBAN SPACES
- ☒ PARKS & ARTS/CULTURE
- ☒ EDUCATIONAL OPPORTUNITIES
- ☒ INCLUSIVITY
- ☒ CLEANLINESS & SAFETY

1.

Build on the Downtown Austin Alliance's Downtown Austin Vision to holistically elevate the quality of the **urban public realm**.

2.

Invest in more lighting and increased staff and volunteer presence, especially along trails and pathways, to ensure parks feel **safe** after dark.

3.

Support more **dense, flexible, and diverse programming and amenities** (e.g. temporary seating or play equipment) in urban public spaces within and beyond PARD parkland.

4.

Continuously monitor and provide a clear picture of **cost and revenue information** to the community, including community and economic impacts associated with large events.

5.

Increase access to healthy and fresh foods through parks.

6.

Expand PARD's **Historic Preservation and Heritage Tourism Program** to protect, restore, and promote the cultural and historic resources of the park system.



## D

# ALIGN PROGRAMS WITH COMMUNITY INTEREST

## ALINEAR LOS PROGRAMAS CON LOS INTERESES DE LA COMUNIDAD



While there is a high demand for more programs at parks, there is also a strong interest in Austin for natural experiences and unprogrammed spaces and activities. As the needs and interests of community members change, program offerings should be evaluated and adjusted as needed to reflect the most relevant programs.

### COMMUNITY ENGAGEMENT THEMES

- ☒ NATURAL EXPERIENCES
- ☐ UNSTRUCTURED SPACES
- ☐ GREEN INFRASTRUCTURE
- ☐ LINEAR PARKS & TRAILS
- ☒ PROXIMITY & ACCESS
- ☒ URBAN SPACES
- ☒ PARKS & ARTS/CULTURE
- ☒ EDUCATIONAL OPPORTUNITIES
- ☒ INCLUSIVITY
- ☐ CLEANLINESS & SAFETY

**1.** Provide more **nature-based programs**.

**2.** Increase **adult and senior programming** across multiple categories – active recreation, nature-based, and arts and culture.

**3.** Increase the number, diversity, and equitable distribution of **arts and culture programs** being offered through PARD.

**4.** Explore partnership strategies to **increase low-income access** to PARD programming.

**5.** Leverage “**pop-up programming and temporary uses**” (e.g. beer gardens, seasonal markets, parklets, exercise classes, etc.) to activate public spaces and expand access to programs typically held in recreation and cultural centers.

**6.** Continually assess **community needs** and proactively plan for recreation programming that aligns to these needs and trends.



E

# OPTIMIZE & IMPROVE EFFICIENCY OF OPERATIONS

APROVECHAR LO MEJOR POSIBLE Y MEJORAR LA EFICIENCIA DE LAS OPERACIONES



Leverage partnerships and revenue opportunities to elevate the quality of PARD operations and maintenance while upholding equitable park access and ensuring a sustainable and well-balanced PARD budget.

## COMMUNITY ENGAGEMENT THEMES

- ☐ NATURAL EXPERIENCES
- ☒ UNSTRUCTURED SPACES
- ☒ GREEN INFRASTRUCTURE
- ☒ LINEAR PARKS & TRAILS
- ☐ PROXIMITY & ACCESS
- ☒ URBAN SPACES
- ☐ PARKS & ARTS/CULTURE
- ☐ EDUCATIONAL OPPORTUNITIES
- ☒ INCLUSIVITY
- ☒ CLEANLINESS & SAFETY

1.

**Consolidate and improve efficiency** of maintenance operations, administrative, and program management functions to a central location with appropriate level of office space and facilities.

4.

Improve the **value and awareness** of the parks and recreation system offerings to the community.

5.

Develop a clear **organizational framework** for PARD partnerships that is equitable, supportive of PARD’s mission and goals, and is regularly evaluated to track and monitor impacts and outcomes.

6.

Work with partners to improve existing parks, trails, and facilities by creating and implementing **master plans**.

7.

Pursue **sustainability and resiliency goals** in all PARD parkland and facilities.

2.

**Improve procurement and contracting process** to make it easier to apply for PARD contracts.

3.

Engage with and provide **work opportunities** in parks to help people experiencing **homelessness** (e.g. the Workforce First program that pays individuals experiencing homelessness to help remove trash in public parks).

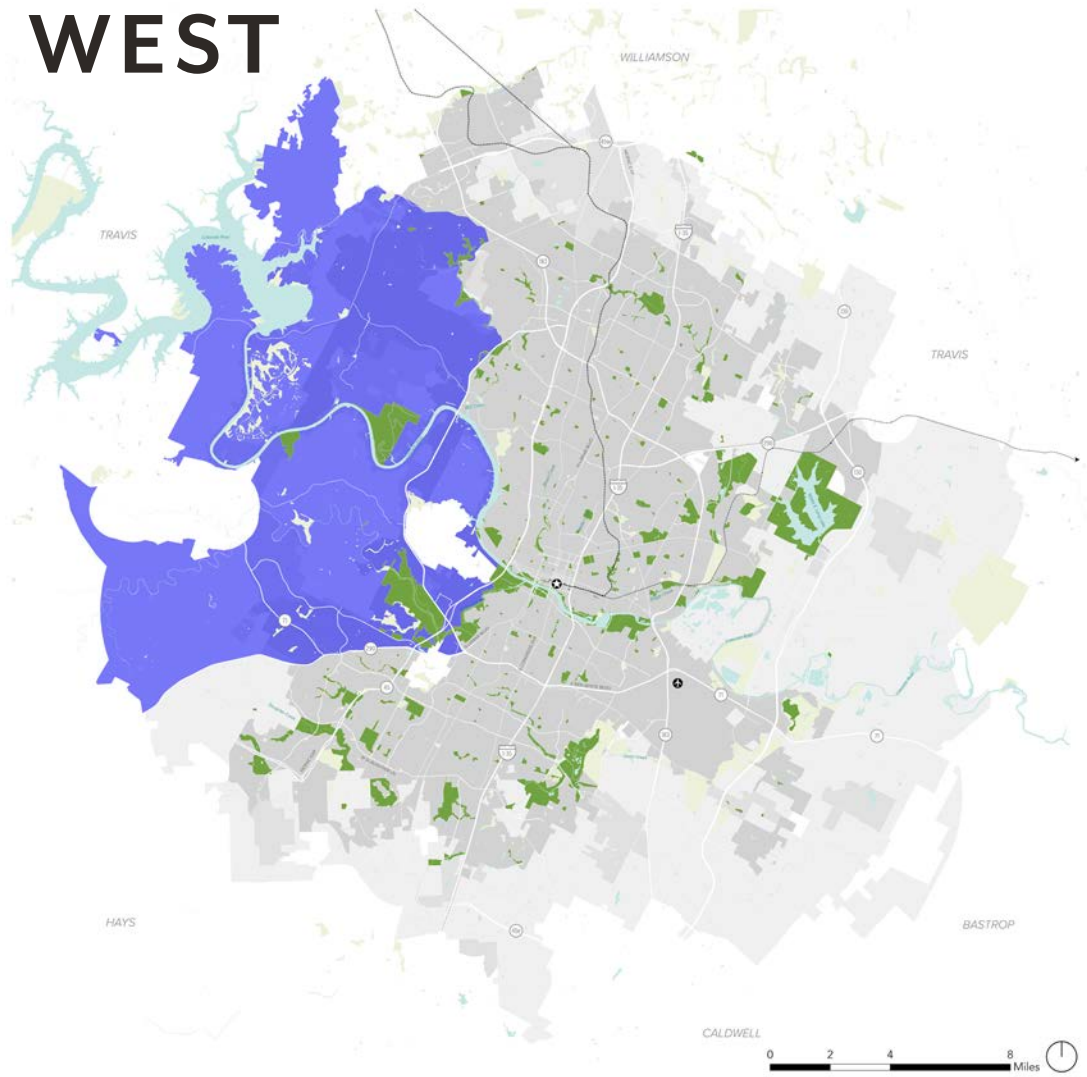


OUR PARKS, OUR FUTURE

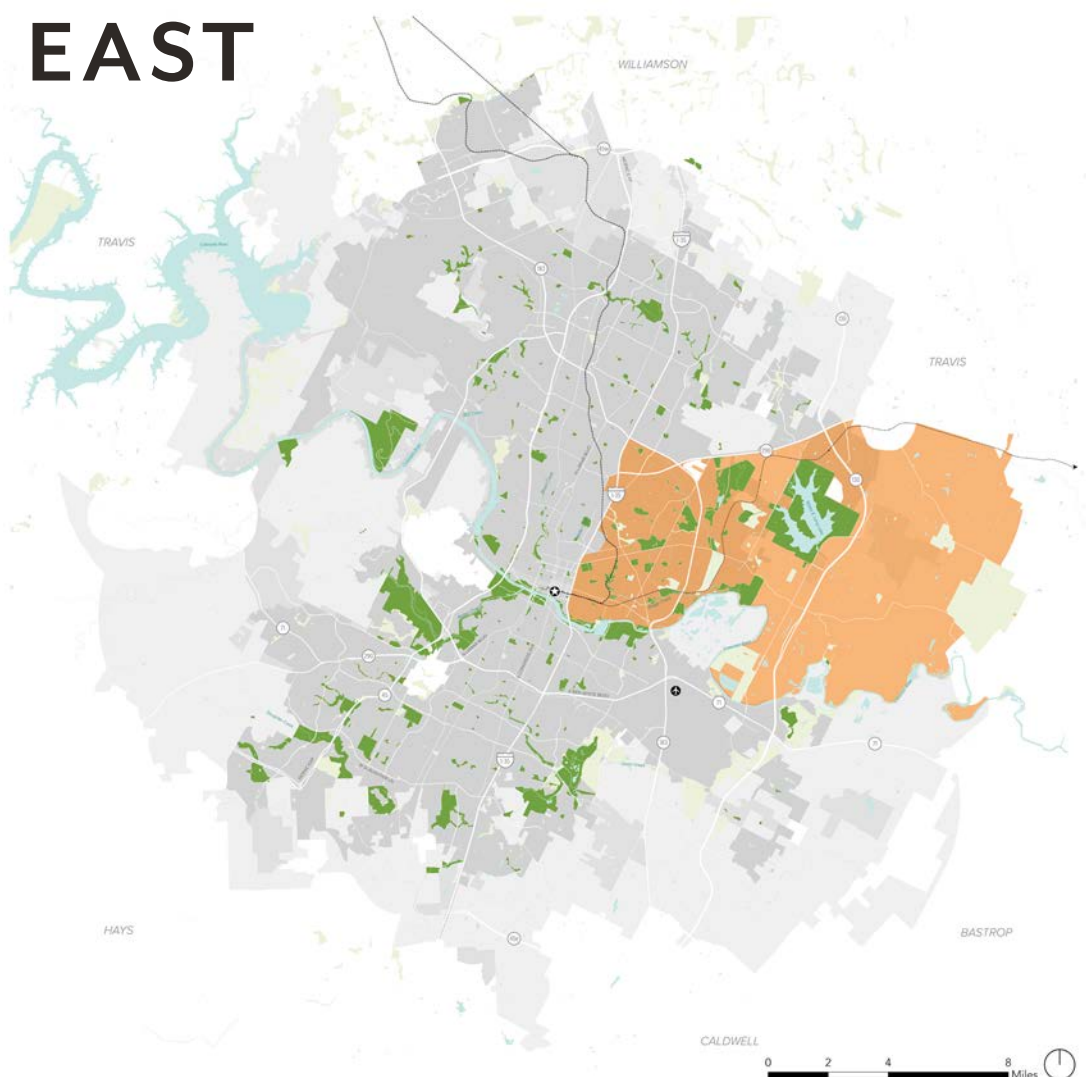
# PLANNING AREA RECOMMENDATIONS

Planning area specific recommendations are included based on the five city-wide strategies and the specific needs and priorities of each combined planning area.

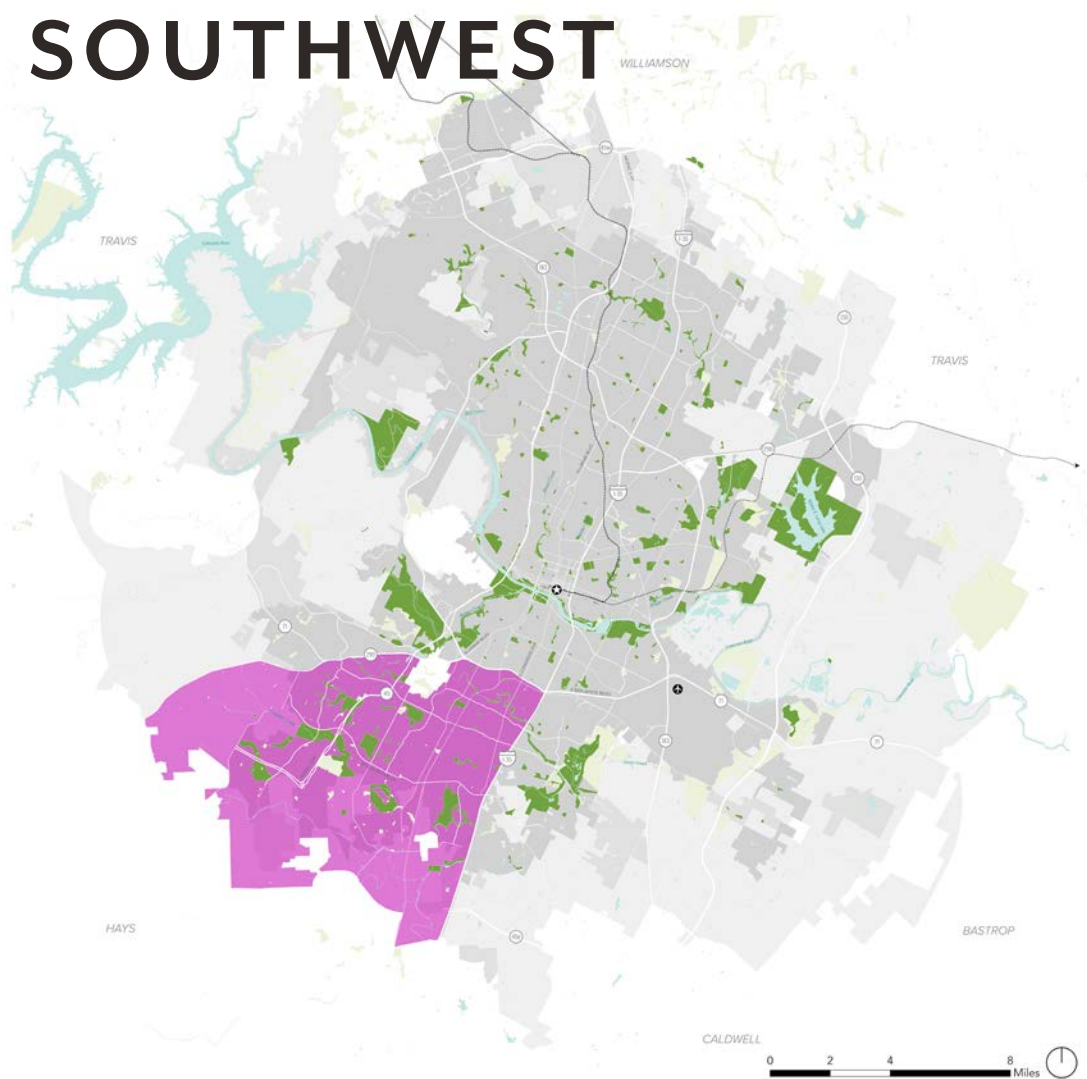
WEST



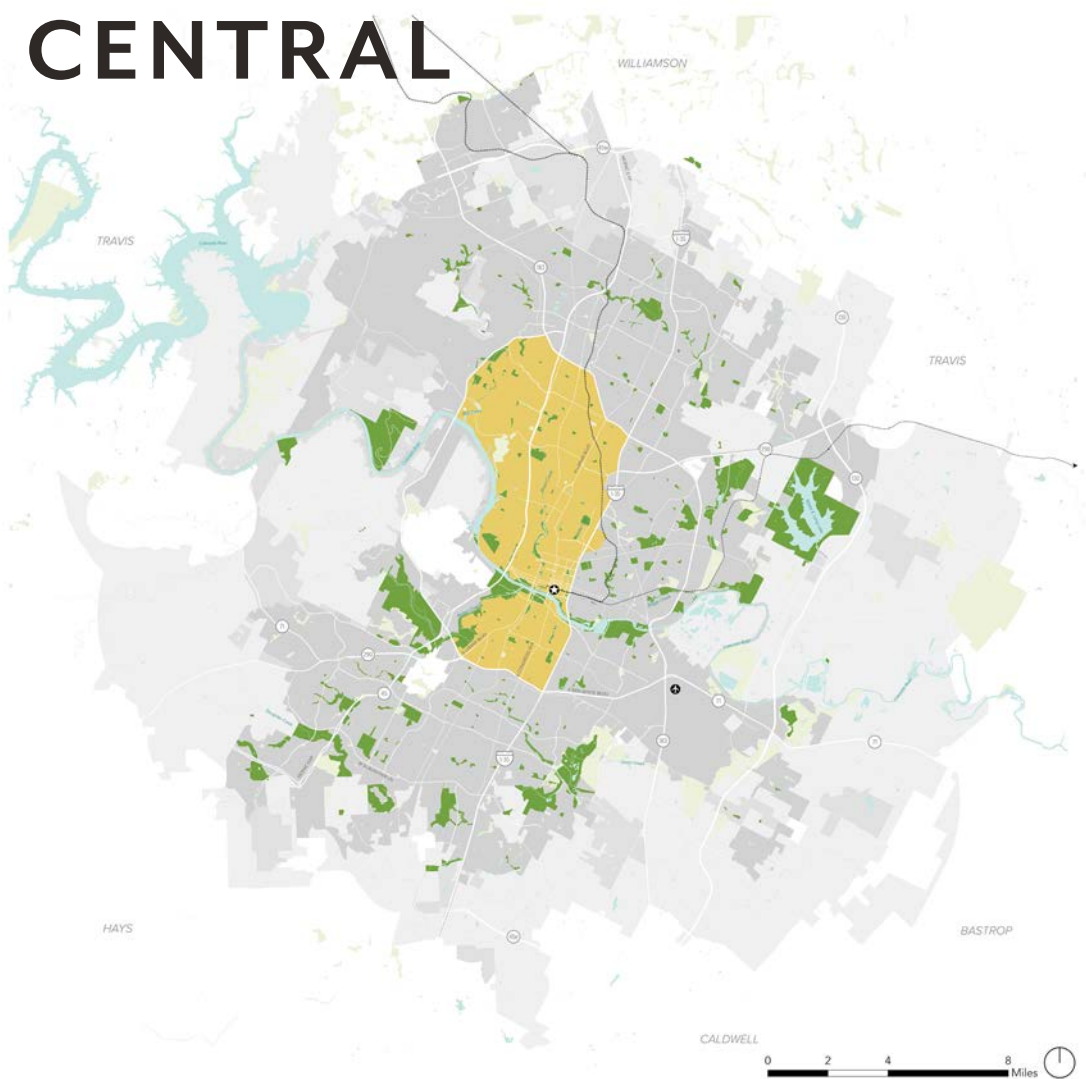
EAST



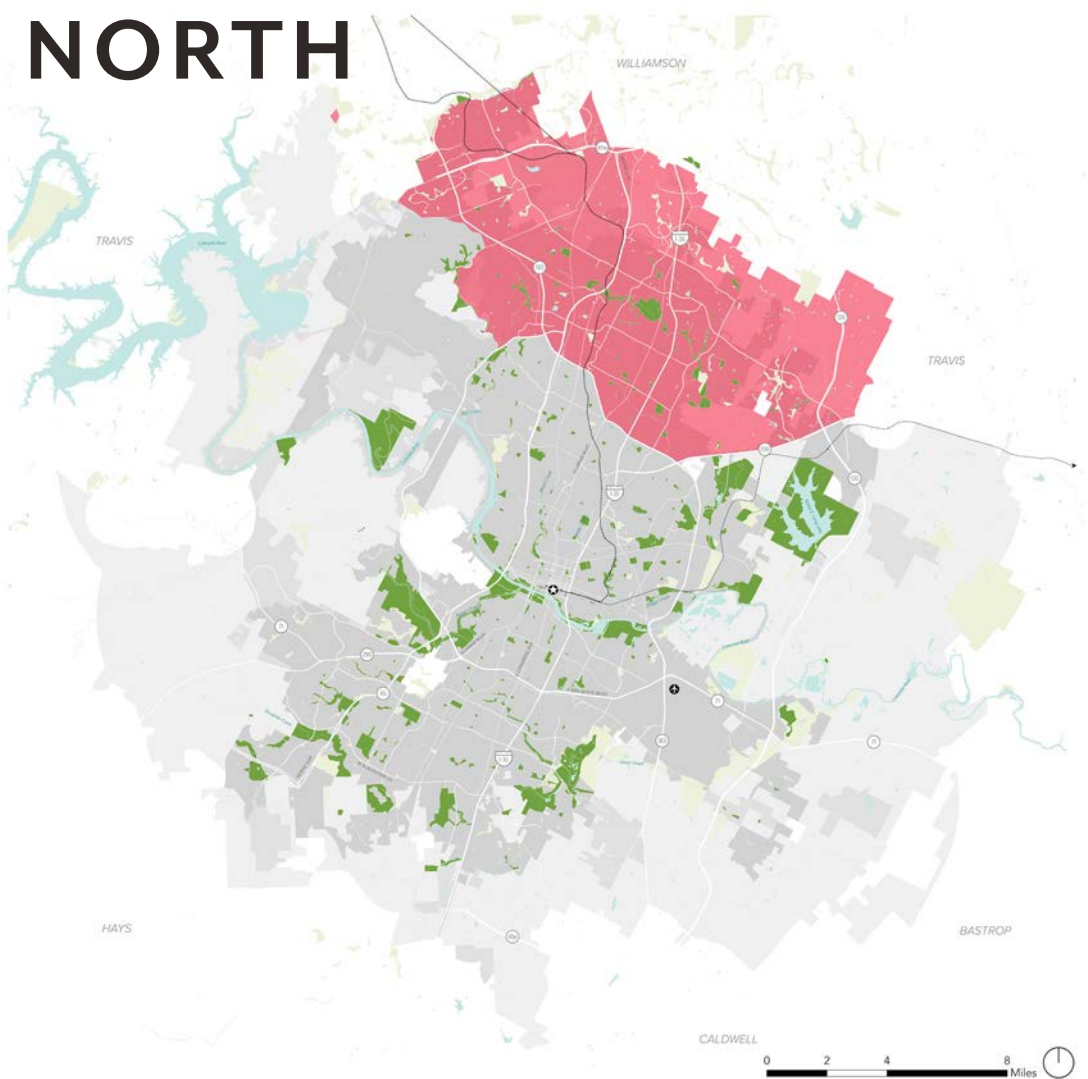
SOUTHWEST



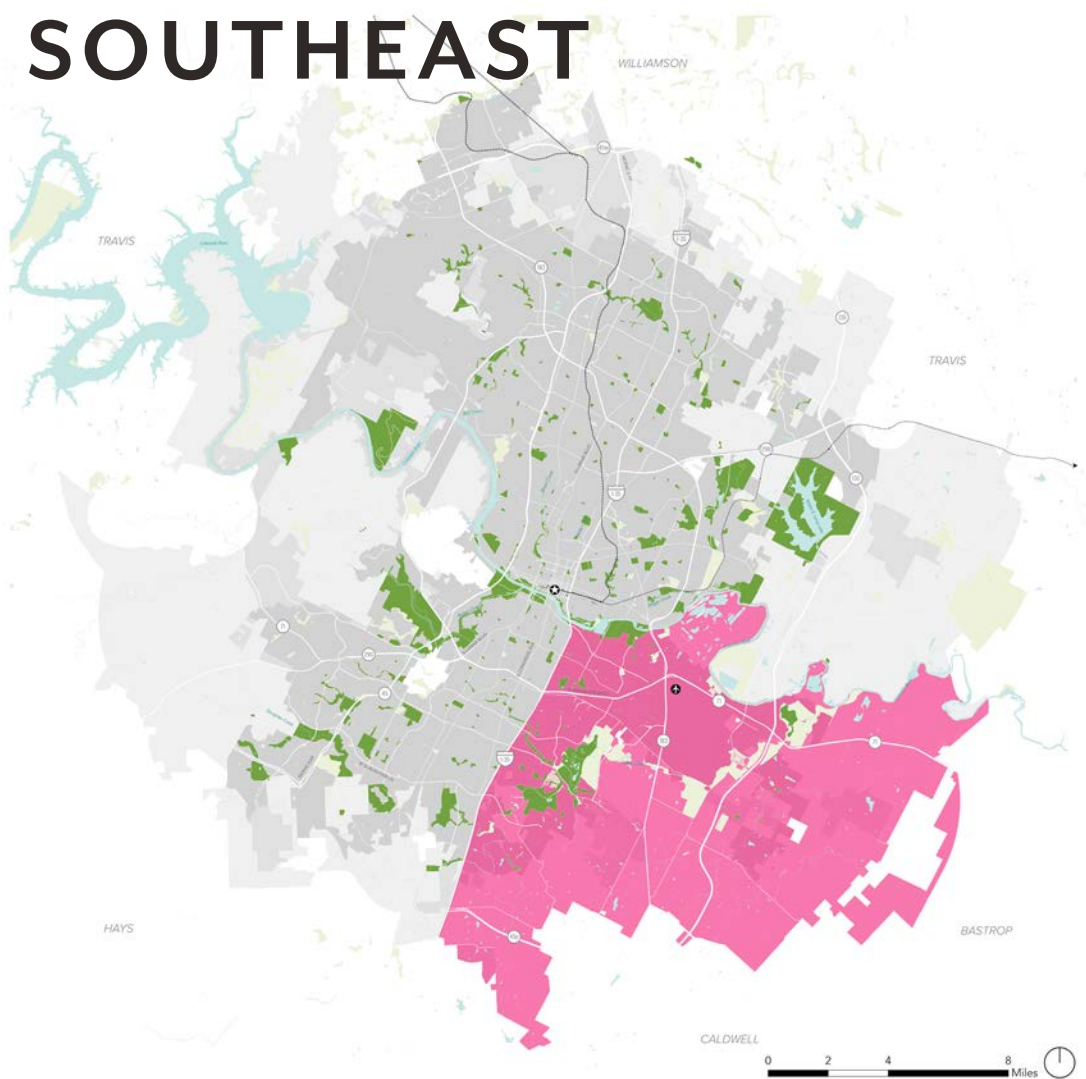
CENTRAL



NORTH



SOUTHEAST





# CENTRAL

THE **CENTRAL** COMBINED PLANNING AREA CAPTURES THE MAJORITY OF AUSTIN’S URBAN CORE. DOMINATED BY RESIDENTS 18-65 WITH SMALL HOUSEHOLD SIZES, IT HAS THE HIGHEST POPULATION & EMPLOYMENT DENSITIES WITH HEALTHY GROWTH EXPECTED IN BOTH.

## PARK DEV. & IMPLEMENTATION

- Adams-Hemphill Neighborhood Park
- Ann and Roy Butler Hike and Bike Trail
- Auditorium Shores at Town Lake Metro Park
- Barton Creek Greenbelt
- Blunn Creek Preserves
- Brush Square
- Bull Creek District Park
- Butler Park
- Covert Park at Mt. Bonnell
- Dougherty Art Center at Butler Shores
- Duncan Neighborhood Park
- Elisabet Ney Museum

Emma S. Barrientos Mexican American Cultural Center

Grove at Shoal Creek

Highland Neighborhood Park and Reznicek Fields

Lamar Beach at Town Lake Metro Park

Northwest Recreation Center

Norwood House

Mayfield Nature Preserve

Old Bakery Emporium & Visitors Center

Pease District Park

Perry Neighborhood Park

## PARK DEV. & IMPLEMENTATION

- Reed Neighborhood Park
- Seaholm Waterfront
- South Austin Neighborhood Park
- Steck Valley Greenbelt
- Umlauf Sculpture Garden
- Veterans Pocket Park
- Waller Creek Greenbelt
- Walsh Boat Landing
- West Austin Neighborhood Park
- Wooldridge Square

Work with AISD to implement parks at schools

## ENVIRONMENTAL IMPROVEMENTS

Shoal Creek

## FEASIBILITY STUDIES

- Hancock Golf Course
- Ann and Roy Butler Hike and Bike Trail

## ACQUISITIONS

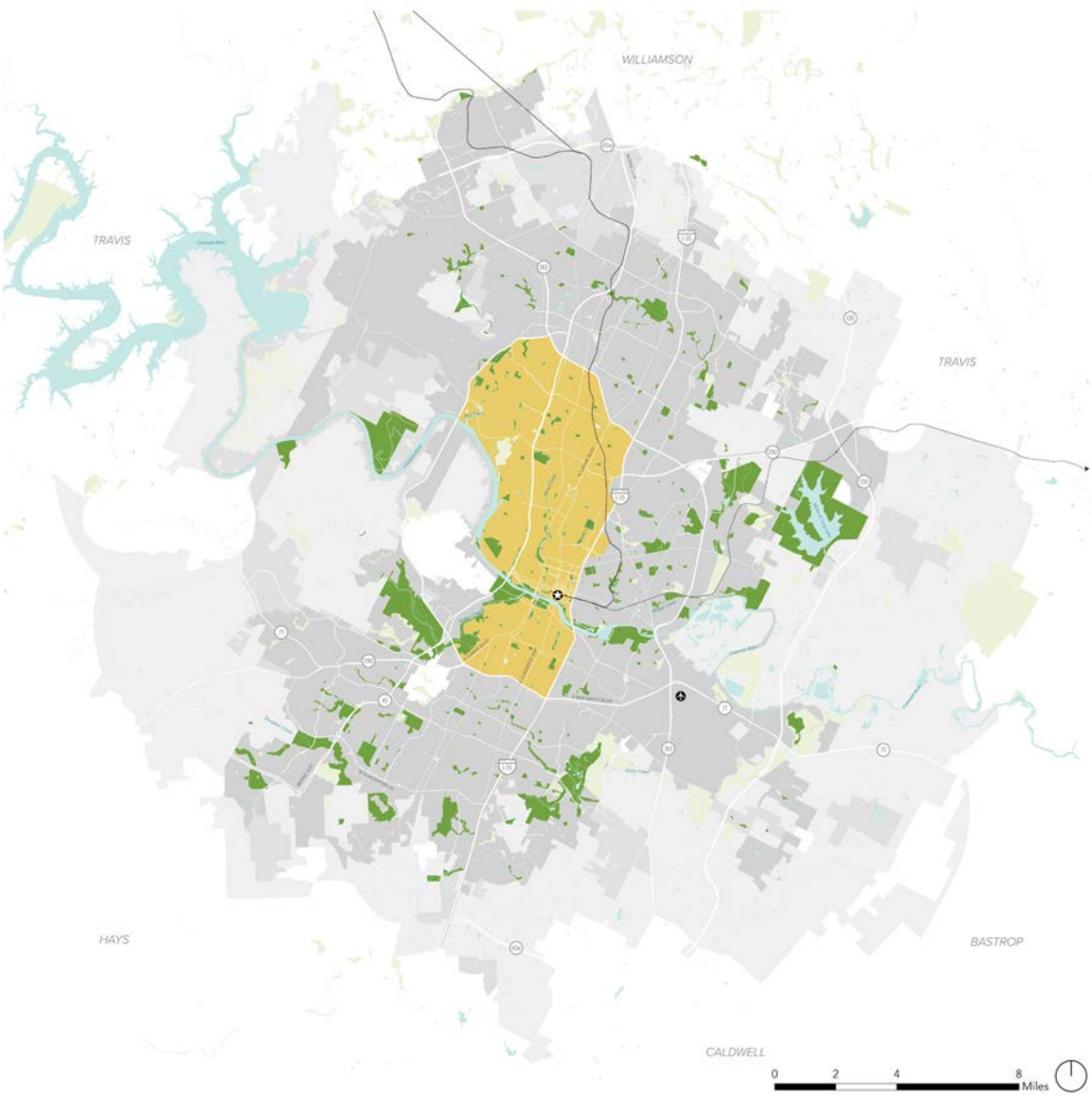
- Blunn Creek Greenbelt
- West and East Bouldin Creek Greenbelt
- New parkland within park deficient areas

## MASTER PLANNING

- Beverly S Sheffield Northwest District Park Master Plan
- Butler Shores at Town Lake Metro Park
- Gillis Neighborhood Park Master Plan

## PARTNERSHIPS

- Austin Parks Foundation
- Downtown Austin Alliance
- Norwood House Foundation
- Pease Park Conservancy
- Shoal Creek Conservancy
- The Trail Foundation
- UT Austin: Brackenridge Tract
- Umlauf Sculpture Garden
- Waterloo Greenway



**60%** OF RESIDENTS LIVE IN PARK DEFICIENT AREAS (51% citywide)



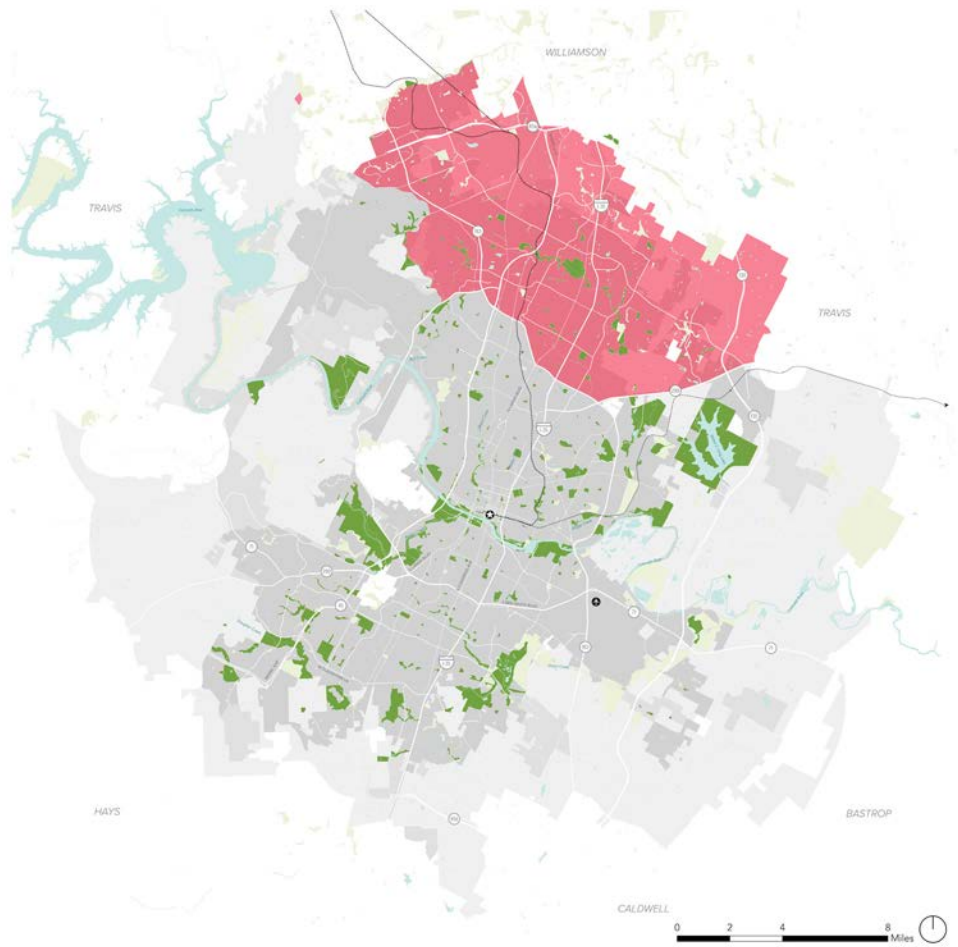
**\$58,474** MEDIAN HOUSEHOLD INCOME (2017) (\$73,800 citywide)

**15.8%** RESIDENTS LIVING IN POVERTY (2017) (13.5% citywide)

All “At A Glance” statistics are calculated using the 5 mile ETJ boundary NOT the City of Austin boundary.



# NORTH



**50% OF RESIDENTS LIVE IN PARK DEFICIENT AREAS** (51% citywide)



**\$61,192**  
MEDIAN HOUSEHOLD INCOME (2017)  
(\$73,800 citywide)

**10.5%**  
RESIDENTS LIVING IN POVERTY (2017)  
(13.5% citywide)

All “At A Glance” statistics are calculated using the 5 mile ETJ boundary NOT the City of Austin boundary.

THE **NORTH** COMBINED PLANNING AREA HAS THE SECOND HIGHEST POPULATION & EMPLOYMENT DENSITIES IN THE CITY BUT IS MORE RACIALLY DIVERSE THAN CENTRAL WITH MORE YOUTH AND LARGER HOUSEHOLD SIZES.

## PARK DEVELOPMENT & IMPLEMENTATION

- Asian American Resource Center
- Brownie Neighborhood Park
- Davis Spring Special Park
- Georgian Acres Neighborhood Park
- Gustavo “Gus” Garcia District Park and Recreation Center
- Harris Branch Neighborhood Park
- Northern Walnut Creek Greenbelt
- Red Line Trail
- Riata Neighborhood Park and Yett Creek Neighborhood Park
- Upper Bull Creek Greenbelt
- Walnut Creek Greenbelt
- Work with AISD to implement parks

## FEASIBILITY STUDIES

- Oertli Neighborhood Park and Copperfield Neighborhood Park
- Explore urban trail connections from Walnut Creek Trail to nearby PARD facilities (e.g., Gus Garcia Rec Center, AARC)

## PARTNERSHIPS

- Austin Energy: Walnut Creek connectivity
- Austin Parks Foundation
- GAVA
- Red Line Parkway Initiative
- Travis County: Gilleland Creek

## ACQUISITIONS

- Janet Long Fish Park at Harris Branch Greenbelt
- Robinson Branch PUD
- Scofield Farms Neighborhood Park
- Walnut Creek Greenbelt
- Walnut Creek Metro Park
- Avery Ranch MUD/PUD
- North Burnet Gateway area
- E. of MoPac & S. of Wells Branch Pkwy
- New parkland within park deficient areas

## MASTER PLANNING

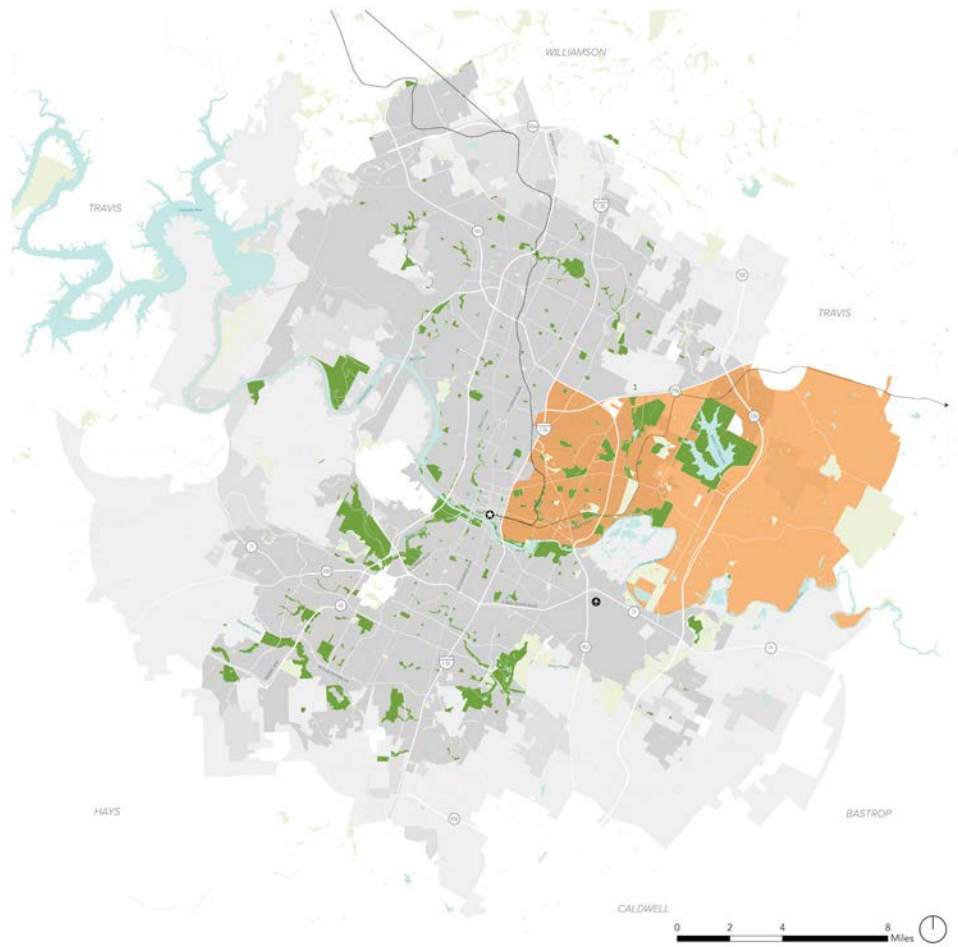
- Balcones District Park
- Lakeline Neighborhood Park
- Musket Valley Neighborhood Park
- Oertli Neighborhood Park
- Pioneer Crossing Neighborhood Park
- Walnut Creek District Park
- Walnut Creek Metropolitan Park

## ENVIRONMENTAL IMPROVEMENTS

- Quail Creek Neighborhood Park



# EAST



**58%** OF RESIDENTS LIVE IN PARK DEFICIENT AREAS (51% citywide)



**\$43,584** MEDIAN HOUSEHOLD INCOME (2017) (\$73,800 citywide)

**23.3%** RESIDENTS LIVING IN POVERTY (2017) (13.5% citywide)

All "At A Glance" statistics are calculated using the 5 mile ETJ boundary NOT the City of Austin boundary.

THE **EAST** COMBINED PLANNING AREA HAS ONE OF THE LOWEST POPULATION DENSITIES WITH THE HIGHEST PROPORTION OF BLACK RESIDENTS, HIGH POVERTY RATE, AND A RELATIVELY HIGH YOUTH POPULATION. IT ALSO HAS THE HIGHEST PROJECTED POPULATION GROWTH AND SUBSTANTIAL EXPECTED JOB GROWTH.

## PARK DEVELOPMENT & IMPLEMENTATION

- Bartholomew District Park
- Colony Park District Park
- Comal Pocket Park
- Conley-Guerrero Senior Activity Center
- Dottie Jordan Neighborhood Park
- Edward Rendon Sr. Park at Festival Beach, Town Lake
- Metropolitan Park
- Givens District Park
- Holly Shores
- Little Walnut Creek Greenbelt
- MLK Station Neighborhood Park
- Morris Williams Golf Course
- Patterson Neighborhood Park
- Pharr Tennis Center
- Rosewood Neighborhood Park
- Springdale Neighborhood Park
- Walnut Creek Sports Park
- Work with AISD to implement parks at schools

## PARTNERSHIPS

- Austin Parks Foundation
- Travis County: Gilleland Creek
- Mueller Development Perimeter Parks & Greenbelts
- Red Line Parkway Initiative

## ACQUISITIONS

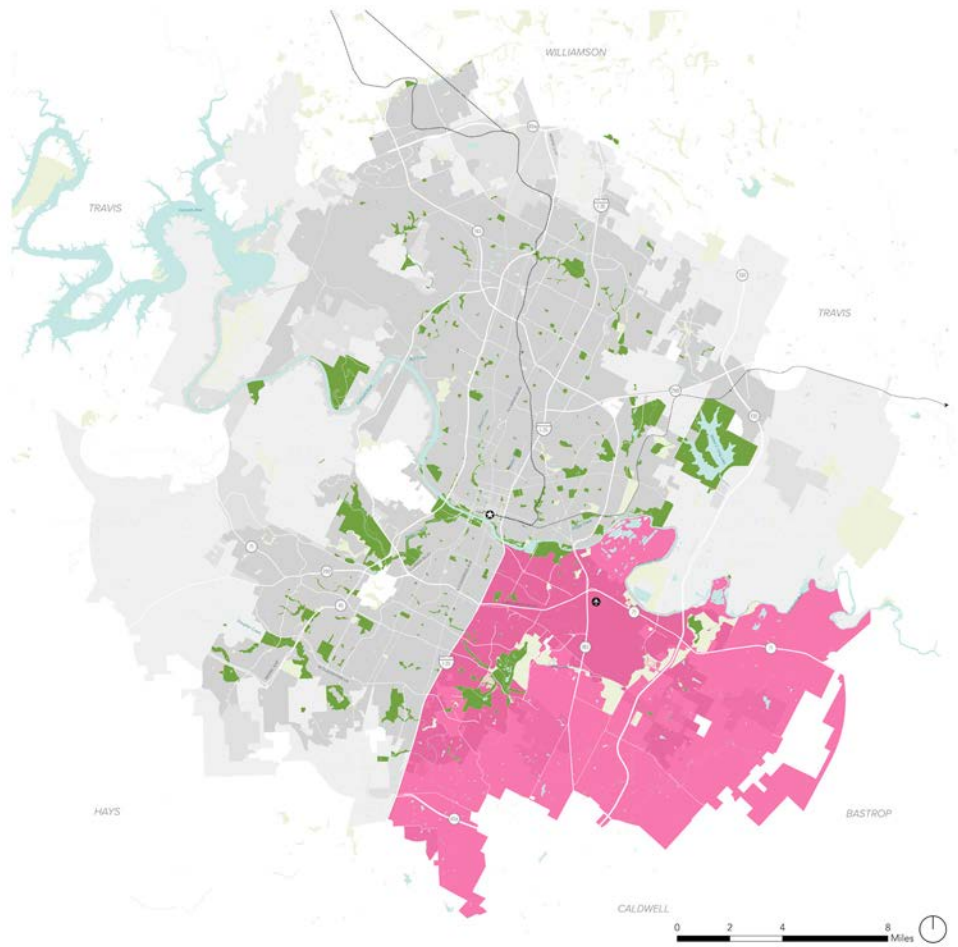
- Agave Neighborhood Park & Colony Park District Park
- Colony Park District Park & John Trevino Metro Park
- Mueller Perimeter Parks & Greenbelts
- Dottie Jordan Neighborhood Park
- Mueller Lake Park
- Springdale Neighborhood Park
- Walnut Creek Greenbelt
- MLK Transit Oriented Development (TOD)
- MLK Blvd and Ed Bluestein Blvd
- Along Colorado River
- Along Fort Branch Creek
- East of I-35, South of 290 and West of Cameron Rd
- New parkland within park deficient areas

## MASTER PLANNING

- Bolm District Park
- Buttermilk Neighborhood Park
- George Washington Carver Museum
- John Trevino Jr Metropolitan Park at Morrison Ranch
- Schieffer Tract
- Walnut Creek Metropolitan Park
- Walter E. Long Metropolitan Park



# SOUTHEAST



**59%** OF RESIDENTS LIVE IN PARK DEFICIENT AREAS (51% citywide)



**\$41,609** MEDIAN HOUSEHOLD INCOME (2017) (\$73,800 citywide)

**21.9%** RESIDENTS LIVING IN POVERTY (2017) (13.5% citywide)

All “At A Glance” statistics are calculated using the 5 mile ETJ boundary NOT the City of Austin boundary.

THE **SOUTHEAST** COMBINED PLANNING AREA HAS THE HIGHEST PROPORTION OF HISPANIC RESIDENTS AND THE SECOND HIGHEST POVERTY RATE ALONG WITH THE SECOND HIGHEST YOUTH POPULATION. HEALTHY POPULATION AND GROWTH AND SUBSTANTIAL JOB GROWTH IS EXPECTED HERE.

## PARK DEVELOPMENT & IMPLEMENTATION

- Clay and Kizer Golf Complex
- Marble Creek Greenbelt
- Montopolis Neighborhood Park
- Onion Creek Metropolitan Park
- Roy G. Guerrero Colorado River Metropolitan Park
- Work with AISD to implement parks at schools

## ENVIRONMENTAL IMPROVEMENTS

- Country Club Creek

## PARTNERSHIPS

- Austin Parks Foundation
- Ecology Action
- GAVA
- The Trail Foundation

## ACQUISITIONS

- Civitan Neighborhood Park
- Roy G Guerrero Metro Park & Mabel Davis District Park
- South Boggy Creek Greenbelt & Onion Creek Metropolitan Park
- Williamson Creek Greenbelt & Onion Creek Greenbelt
- Along Colorado River
- Along North and South Dry Creek Greenbelts
- Austin Water Utility property at William Cannon and Onion Creek
- New parkland in park deficient areas

## MASTER PLANNING

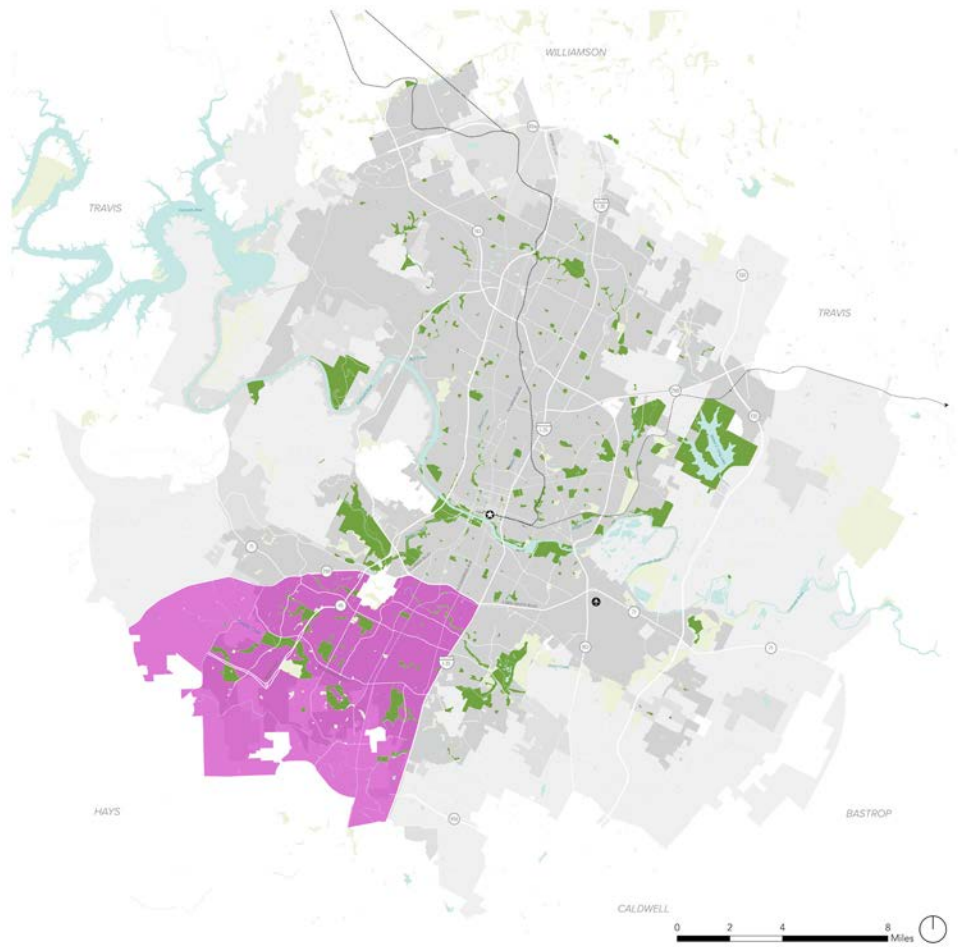
- Civitan Neighborhood Park Master Plan
- Grand Meadow Neighborhood Park
- Montopolis School Master Plan
- Williamson Creek Greenbelt

## FEASIBILITY STUDIES

- Mabel Davis District Park
- Maintenance Facility



# SOUTHWEST



THE **SOUTHWEST** COMBINED PLANNING AREA HAS MID-LEVEL POPULATION AND EMPLOYMENT DENSITIES WITH MINIMAL POPULATION GROWTH BUT SUBSTANTIAL EMPLOYMENT GROWTH EXPECTED AND THE HIGHEST PROPORTION OF WHITE RESIDENTS.

## PARK DEVELOPMENT & IMPLEMENTATION

- AB Dittmar Neighborhood Park
- Circle C Ranch at Slaughter Creek Metropolitan Park
- Grey Rock Golf and Tennis
- Latta Branch Greenbelt
- Onion Creek Greenbelt
- Slaughter Creek Greenbelt
- South Austin Recreation Center
- Work with AISD to implement parks at schools

## PARTNERSHIPS

- Austin Parks Foundation
- Austin Water and Watershed Protection
- Hill Country Conservancy

## ACQUISITIONS

- Onion Creek Greenbelt
- Slaughter Creek Greenbelt
- South Boggy Creek Greenbelt
- Violet Crown Trail
- Williamson Creek Greenbelt
- Oak Hill Area
- Bergstrom spur
- New parkland within park deficient areas

## MASTER PLANNING

- Bauerle Ranch at Slaughter Creek Greenbelt
- Circle C Ranch at Slaughter Creek Metropolitan Park
- Davis Hill Neighborhood Park
- Dick Nichols District Park
- Garrison District Park
- Longview Neighborhood Park
- Mary Moore Searight Metropolitan Park
- Old San Antonio Greenbelt
- Southland Oaks Neighborhood Park
- Williamson Creek Greenbelt



**38%** OF RESIDENTS LIVE IN PARK DEFICIENT AREAS (51% citywide)



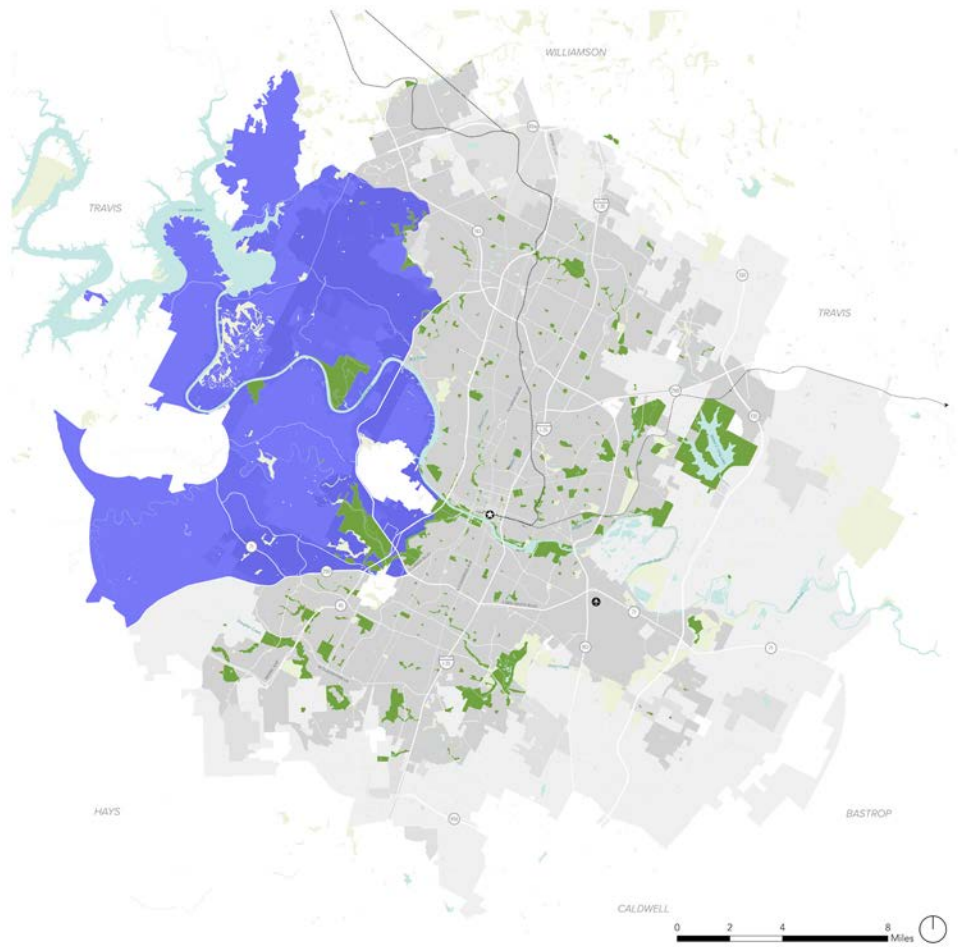
**\$73,949** MEDIAN HOUSEHOLD INCOME (2017) (\$73,800 citywide)

**8.1%** RESIDENTS LIVING IN POVERTY (2017) (13.5% citywide)

All "At A Glance" statistics are calculated using the 5 mile ETJ boundary NOT the City of Austin boundary.



# WEST



THE **WEST** COMBINED PLANNING AREA HAS THE LOWEST POPULATION AND EMPLOYMENT DENSITIES WITH MINIMAL GROWTH EXPECTED AND HAS THE HIGHEST PROPORTION OF BOTH SENIOR RESIDENTS AND YOUTH.

## PARK DEVELOPMENT & IMPLEMENTATION

Ann and Roy Butler Hike and Bike Trail

Barton Creek Greenbelt

Bull Creek District Park

Bull Creek Greenbelt

Emma Long Metropolitan Park

Red Bud Isle

St. Edward’s Greenbelt

Zilker Metropolitan Park

Zilker Metropolitan Park

Work with AISD to implement parks at schools

## ENVIRONMENTAL IMPROVEMENTS

Colorado River

Barton Creek Greenbelt

## PARTNERSHIPS

Austin Parks Foundation

Barton Springs Conservancy

Travis Audubon

Zilker Botanical Garden Conservancy

## ACQUISITIONS

Barton Creek Greenbelt

Eagle’s Nest Park

Gaines Creek Greenbelt

Upper Bull Creek Greenbelt

Williamson Creek Greenbelt

Oak Hill Area

Acquire land in park deficient areas for pocket and neighborhood parks



**45%** OF RESIDENTS LIVE IN PARK DEFICIENT AREAS (51% citywide)



**\$116,173** MEDIAN HOUSEHOLD INCOME (2017) (\$73,800 citywide)

**54%** RESIDENTS LIVING IN POVERTY (2017) (13.5% citywide)

All “At A Glance” statistics are calculated using the 5 mile ETJ boundary NOT the City of Austin boundary.



OUR PARKS, OUR FUTURE

# IMPLEMENTATION AND FUNDING

---

## FUNDING OPTIONS

### EXTERNAL FUNDING

e.g., Corporate Sponsorships, Partnerships, Foundations and Partners/Donations, Private Donations, Irrevocable Remainder Trusts, Volunteerism

### CAPITAL FEES

e.g., Capital Fees, Impact Fees

### USER FEES

e.g., Recreation Service Fees, Fees/Charges, Ticket Sales/Admissions, Permits (Special Use Permits)

### TAX SUPPORT

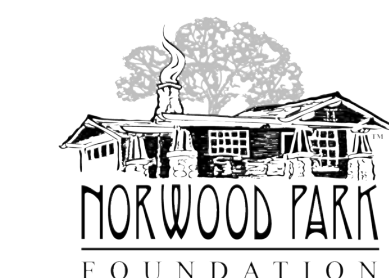
e.g., Bond Issues, Property Taxes, Special Improvement District/Benefit District, Public Improvement District (PID)

### FRANCHISES AND LICENSE AGREEMENTS

e.g., Concession Management, Private Management, Naming Rights, Private Developers, Easements, Advertising Sales, Interlocal Agreements

### GRANTS

## PARTNERS INCLUDE



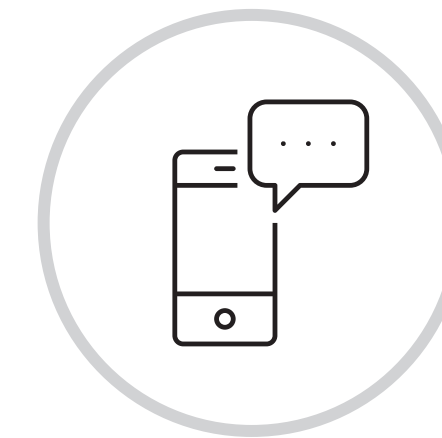


# DRAFT PLAN REVIEW

---

**View the Draft Plan**

[www.austinfutureparks.org](http://www.austinfutureparks.org)



## STAY CONNECTED

Kim McKnight, Project Lead  
Park Planning Division

E: [Kim.McKnight@austintexas.gov](mailto:Kim.McKnight@austintexas.gov)