

Proposed Relocation for 2711 South Interstate Highway 35

City of Austin
Real Estate Services



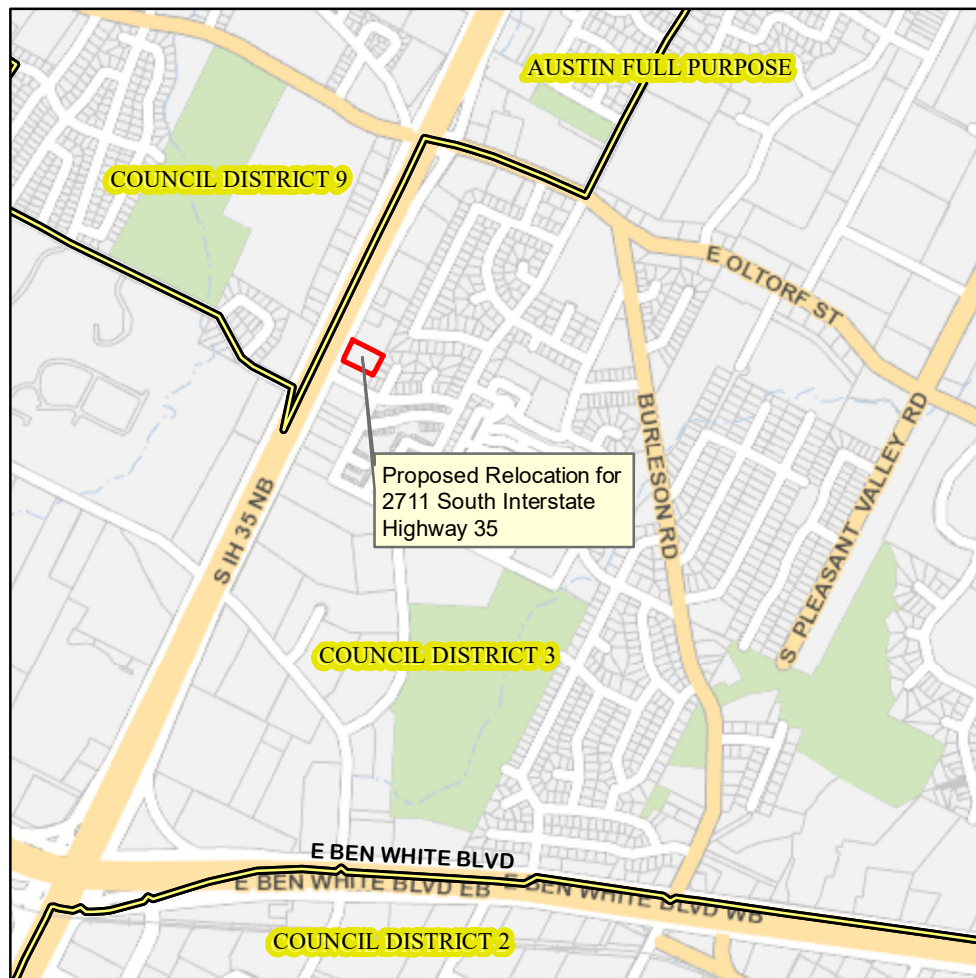
This product is for informational purposes and may not have been prepared for or be suitable for legal, engineering, or surveying purposes. It does not represent an on-the-ground survey and represents only the approximate relative location of property boundaries.

This product has been produced by the Office of Real Estate Services for the sole purpose of geographic reference. No warranty is made by the City of Austin regarding specific accuracy or completeness.

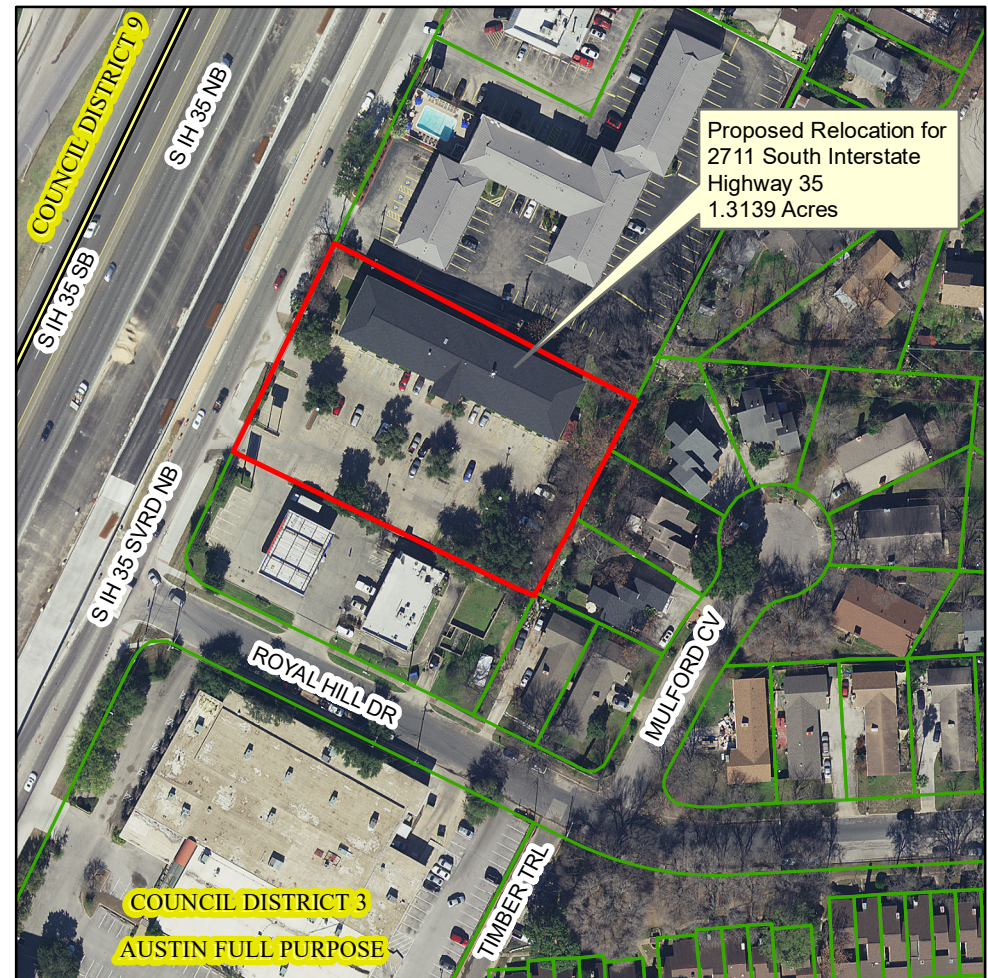
Produced by MMcDonald, 11/07/2019

- 2711 South Interstate Highway 35
- City Council Districts
- TCAD Parcels

2019 Aerial Imagery, City of Austin



0 2,000 4,000 Feet



0 100 200 Feet