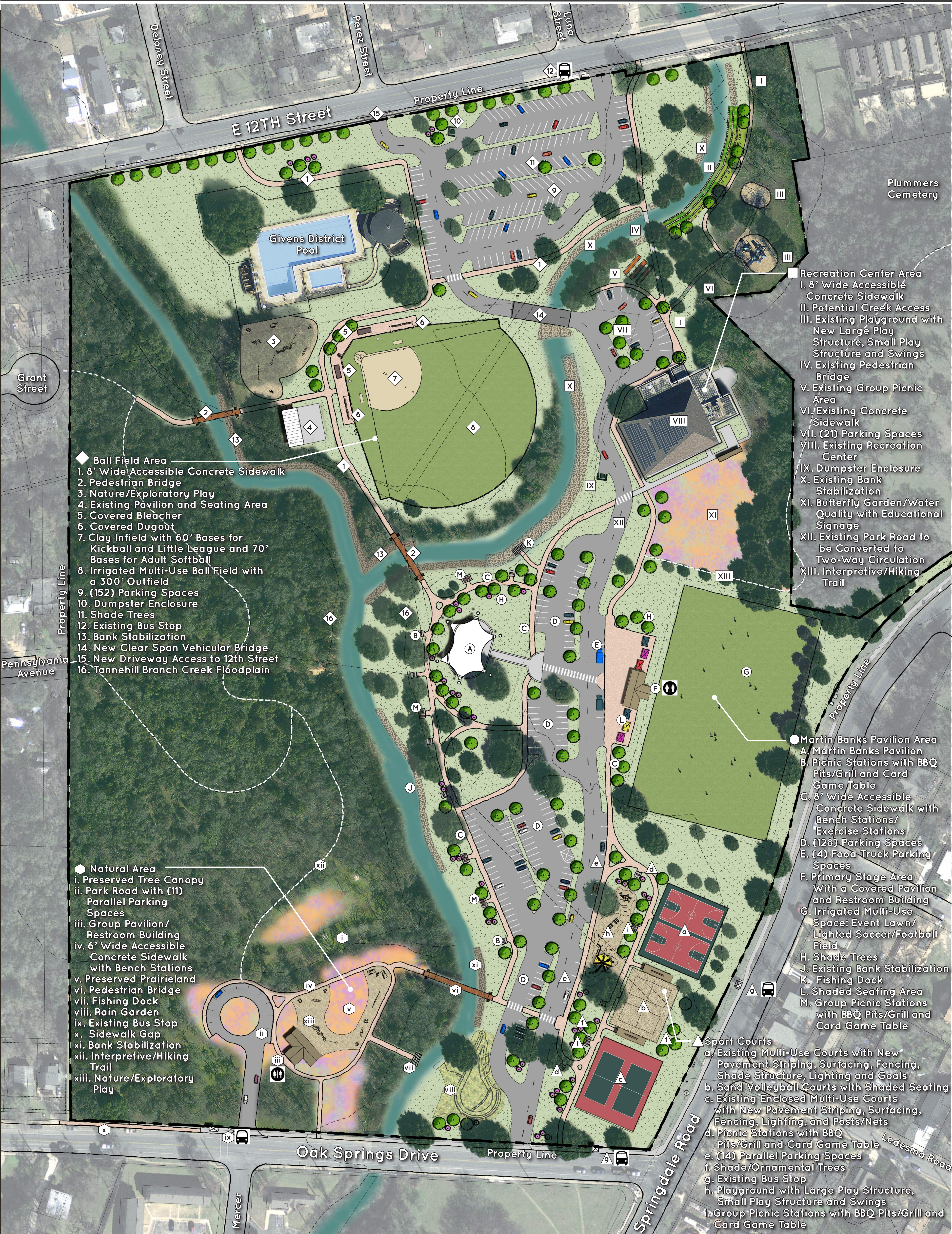


GIVENS DISTRICT PARK MASTER PLAN



- Ball Field Area**
- 1. 8' Wide Accessible Concrete Sidewalk
 - 2. Pedestrian Bridge
 - 3. Nature/Exploratory Play
 - 4. Existing Pavilion and Seating Area
 - 5. Covered Bleacher
 - 6. Covered Dugout
 - 7. Clay Infield with 60' Bases for Kickball and Little League and 70' Bases for Adult Softball
 - 8. Irrigated Multi-Use Ball Field with a 300' Outfield
 - 9. (152) Parking Spaces
 - 10. Dumpster Enclosure
 - 11. Shade Trees
 - 12. Existing Bus Stop
 - 13. Bank Stabilization
 - 14. New Clear Span Vehicular Bridge
 - 15. New Driveway Access to 12th Street
 - 16. Tannehill Branch Creek Floodplain

- Natural Area**
- i. Preserved Tree Canopy
 - ii. Park Road with (11) Parallel Parking Spaces
 - iii. Group Pavilion/ Restroom Building
 - iv. 6' Wide Accessible Concrete Sidewalk with Bench Stations
 - v. Preserved Prairieland
 - vi. Pedestrian Bridge
 - vii. Fishing Dock
 - viii. Rain Garden
 - ix. Existing Bus Stop
 - x. Sidewalk Gap
 - xi. Bank Stabilization
 - xii. Interpretive/Hiking Trail
 - xiii. Nature/Exploratory Play

- Recreation Center Area**
- I. 8' Wide Accessible Concrete Sidewalk
 - II. Potential Creek Access
 - III. Existing Playground with New Large Play Structure, Small Play Structure and Swings
 - IV. Existing Pedestrian Bridge
 - V. Existing Group Picnic Area
 - VI. Existing Concrete Sidewalk
 - VII. (21) Parking Spaces
 - VIII. Existing Recreation Center
 - IX. Dumpster Enclosure
 - X. Existing Bank Stabilization
 - XI. Butterfly Garden/Water Quality with Educational Signage
 - XII. Existing Park Road to be Converted to Two-Way Circulation
 - XIII. Interpretive/Hiking Trail

- Martin Banks Pavilion Area**
- A. Martin Banks Pavilion
 - B. Picnic Stations with BBQ Pits/Grill and Card Game Table
 - C. 8' Wide Accessible Concrete Sidewalk with Bench Stations/ Exercise Stations
 - D. (128) Parking Spaces
 - E. (4) Food Truck Parking Spaces
 - F. Primary Stage Area With a Covered Pavilion and Restroom Building
 - G. Irrigated Multi-Use Space: Event Lawn/ Lighted Soccer/Football Field
 - H. Shade Trees
 - J. Existing Bank Stabilization
 - K. Fishing Dock
 - L. Shaded Seating Area
 - M. Group Picnic Stations with BBQ Pits/Grill and Card Game Table

- Sport Courts**
- a. Existing Multi-Use Courts with New Pavement Striping, Surfacing, Fencing, Shade Structure, Lighting and Goals
 - b. Sand Volleyball Courts with Shaded Seating
 - c. Existing Enclosed Multi-Use Courts with New Pavement Striping, Surfacing, Fencing, Lighting, and Posts/Nets
 - d. Picnic Stations with BBQ Pits/Grill and Card Game Table
 - e. (14) Parallel Parking Spaces
 - f. Shade/Ornamental Trees
 - g. Existing Bus Stop
 - h. Playground with Large Play Structure, Small Play Structure and Swings
 - i. Group Picnic Stations with BBQ Pits/Grill and Card Game Table

