

---

# COVID-19 Update

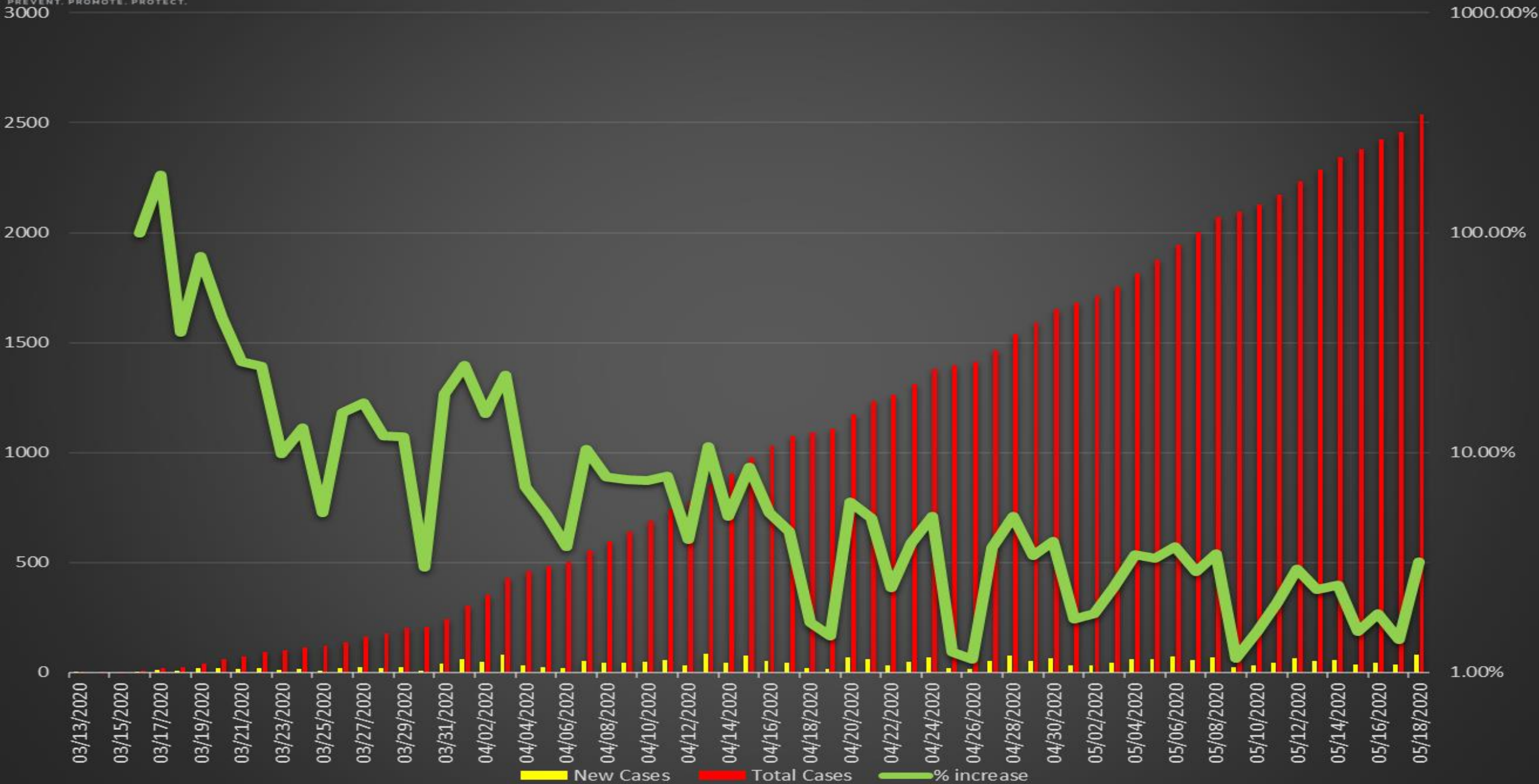
## May 19, 2020

Austin Public Health

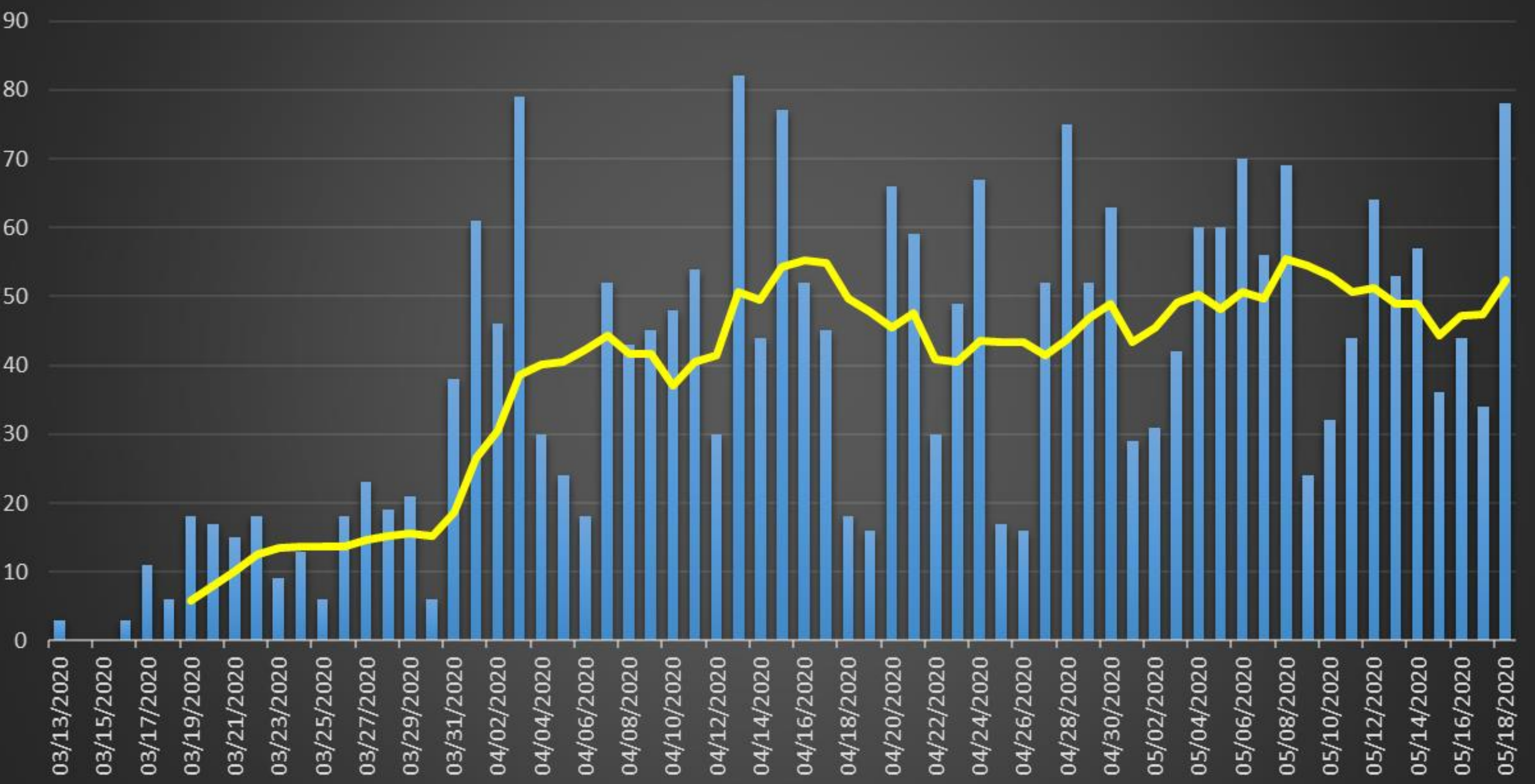
Mark Escott, MD, MPH, Interim Health Authority



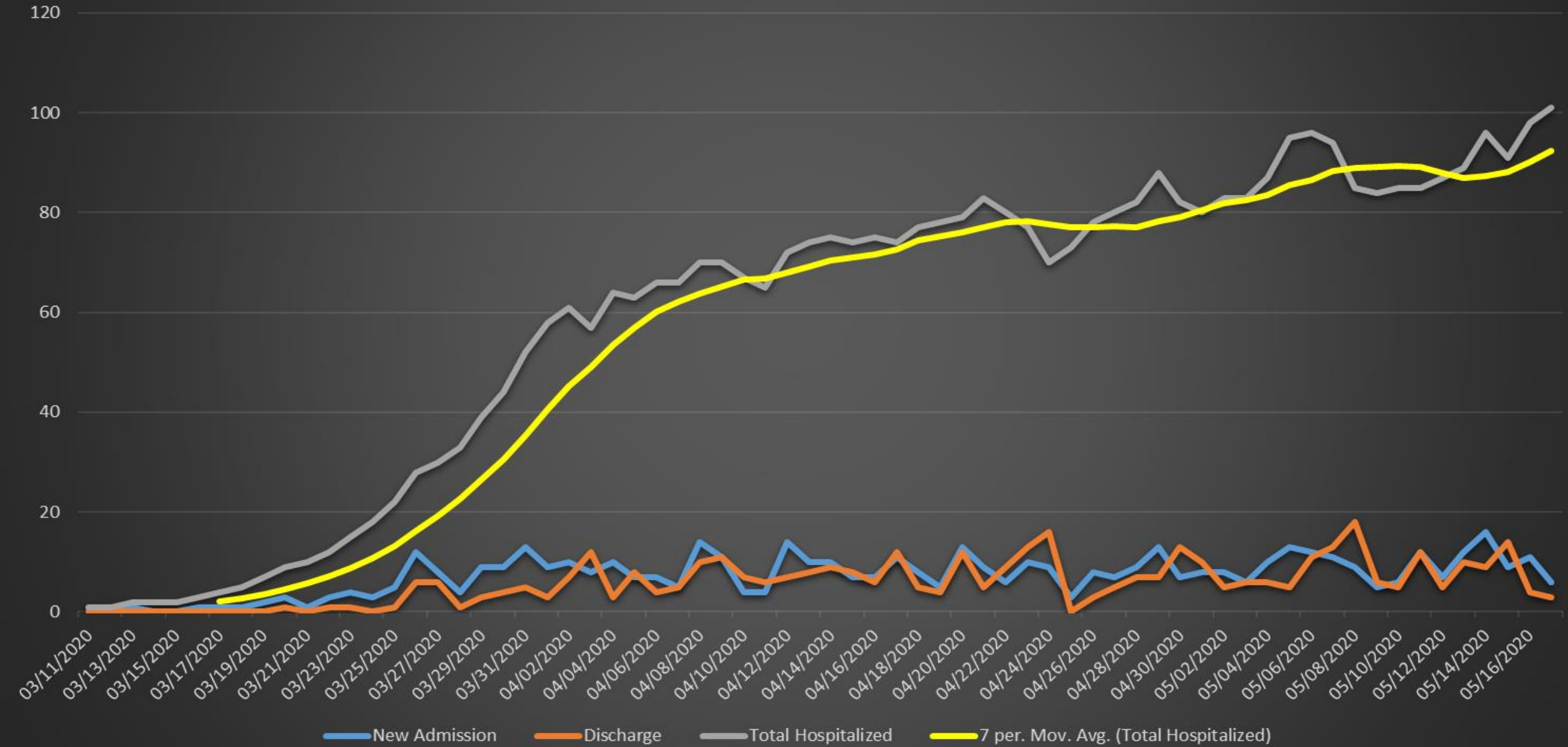
# City of Austin - Travis County COVID-19 Positive Cases



# COVID-19 Travis County New Confirmed Cases



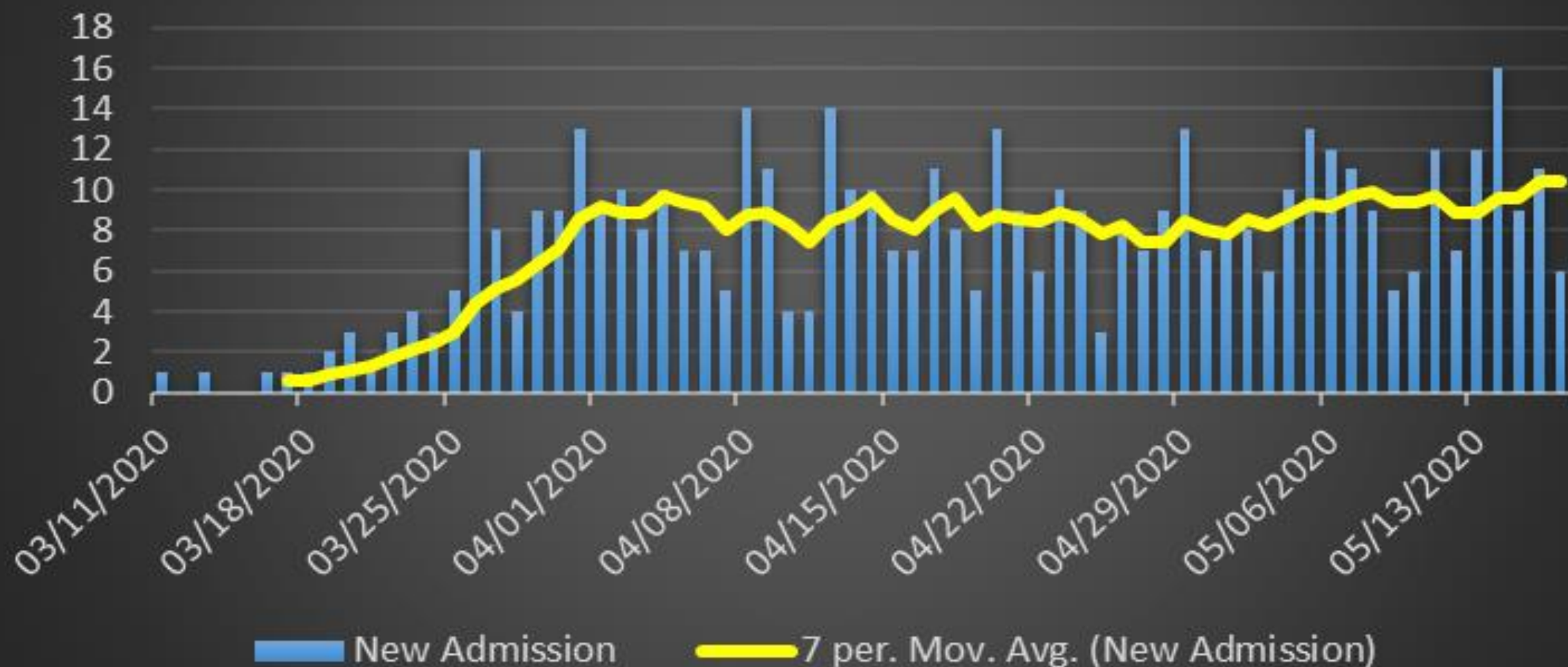
# COVID-19 Austin MSA Hospitalizations



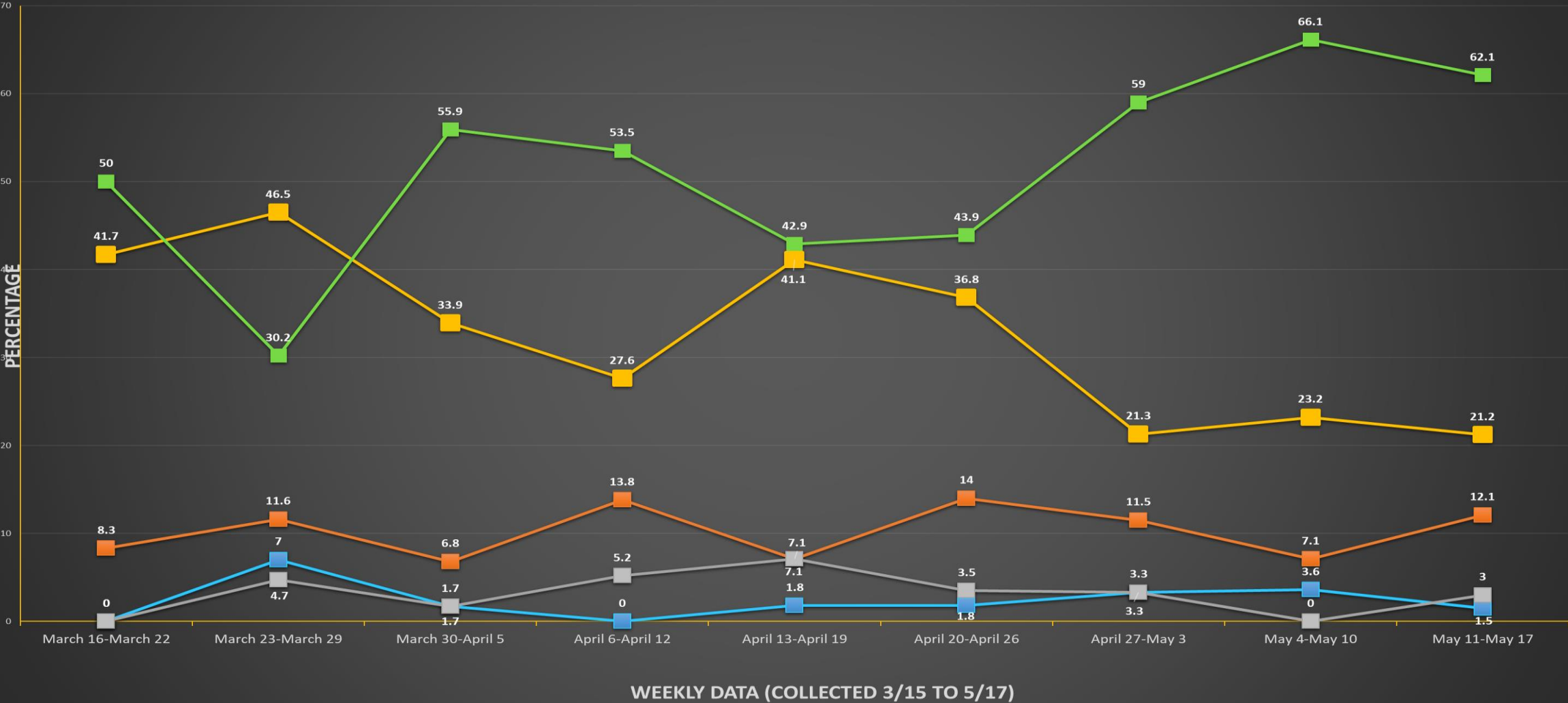


# COVID-19 New Admissions

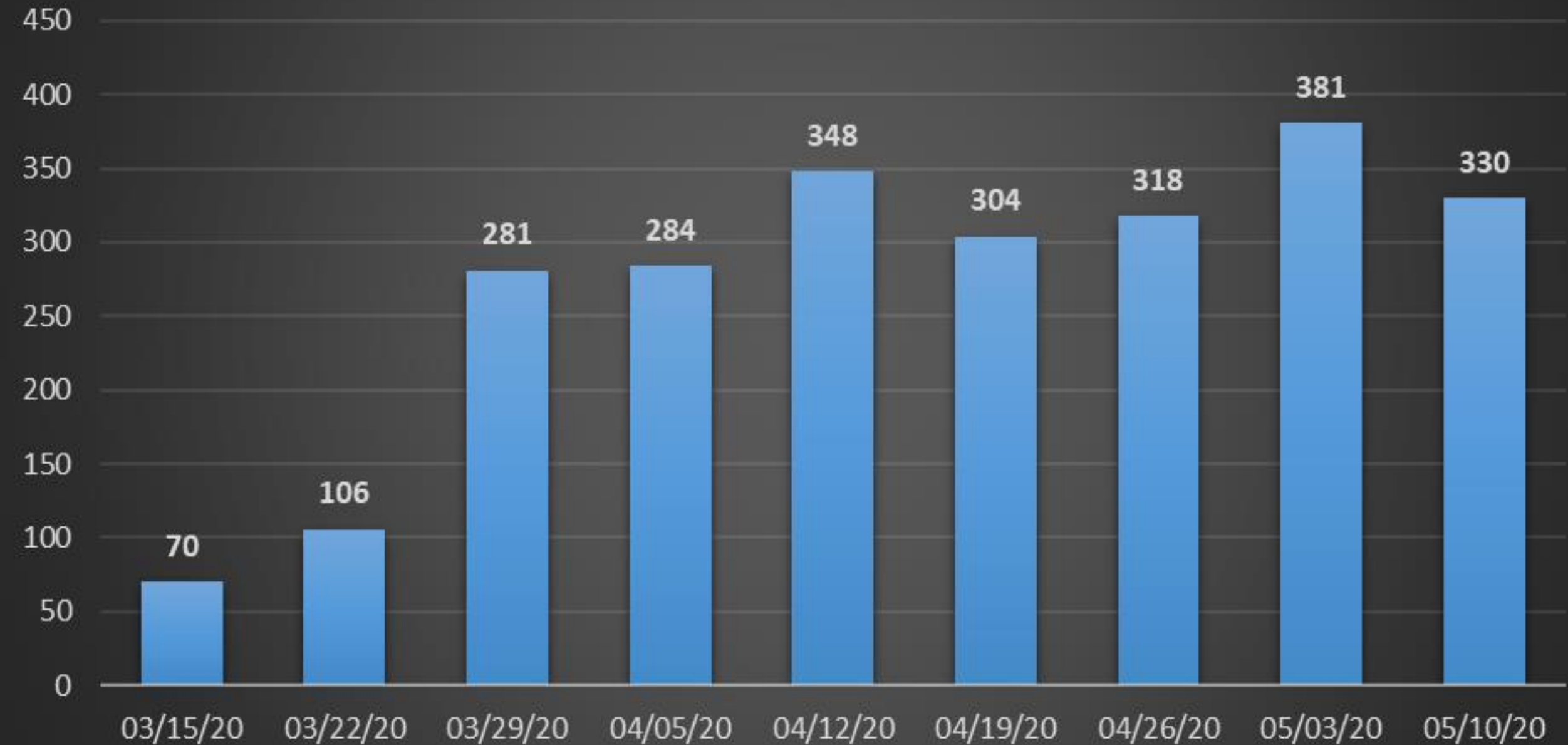
## Austin MSA



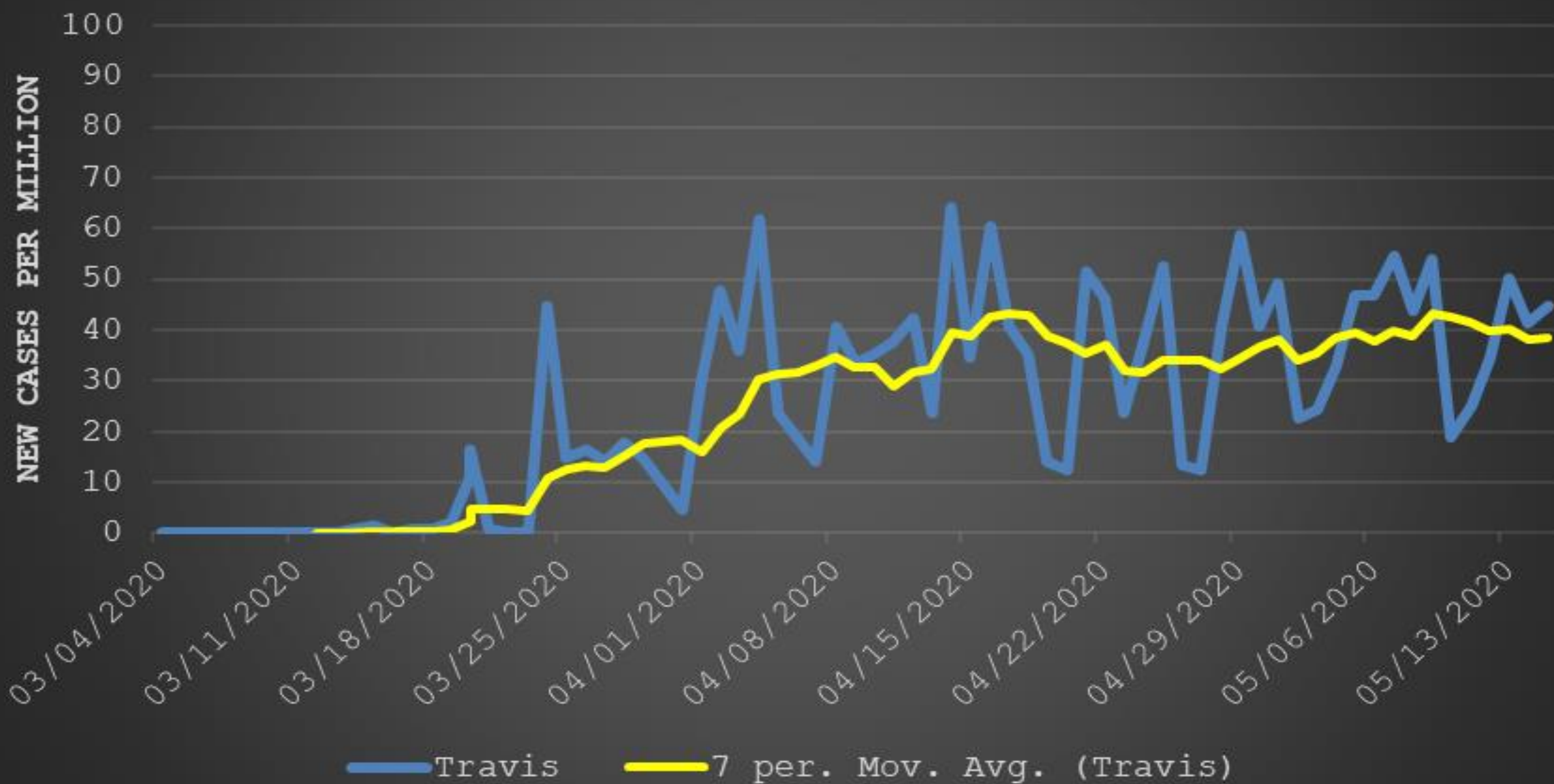
# City of Austin - Travis County COVID-19 Hospitalization by Race & Ethnicity (Austin MSA)



# COVID-19 Weekly Confirmed Cases

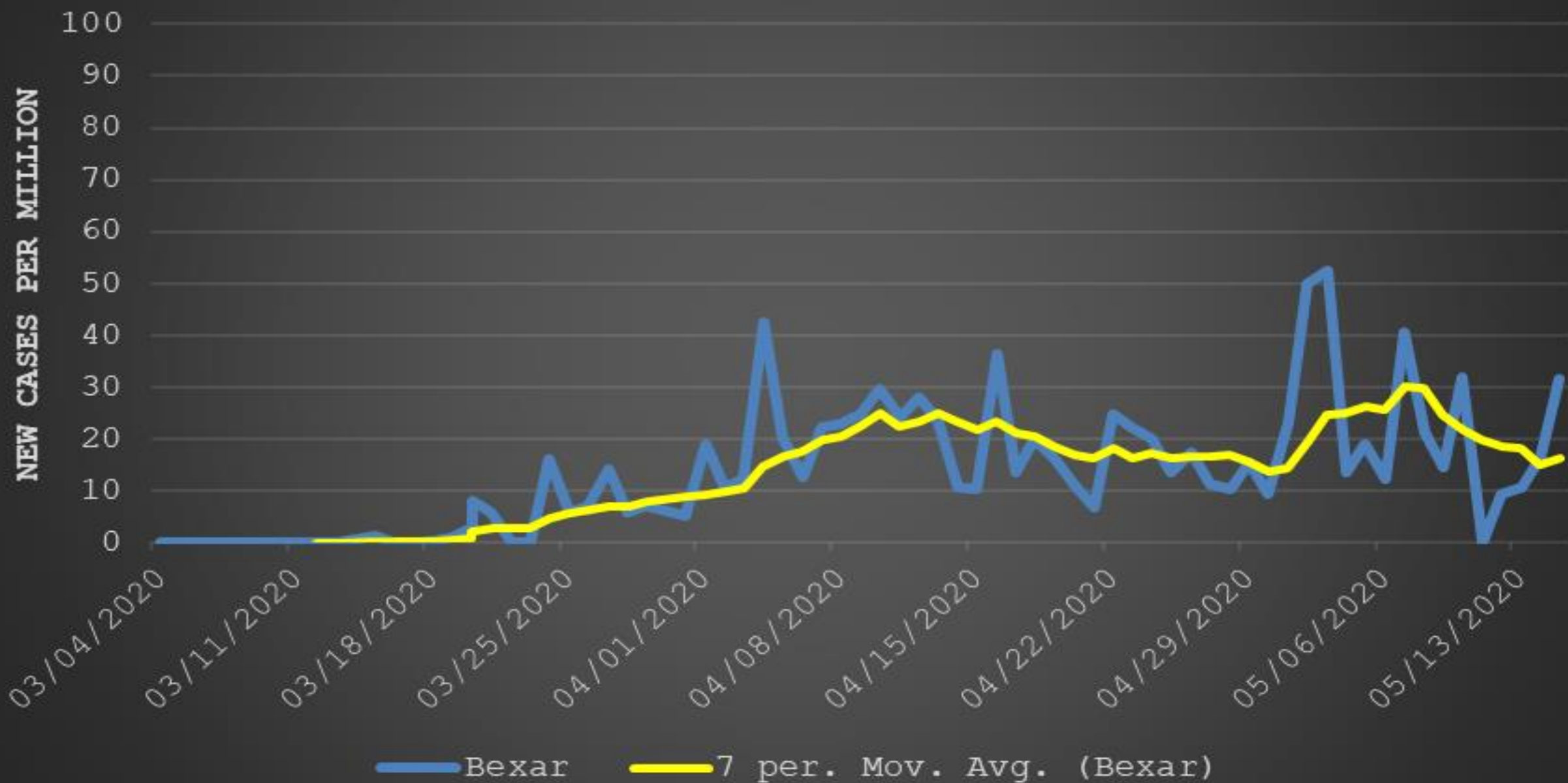


# Travis

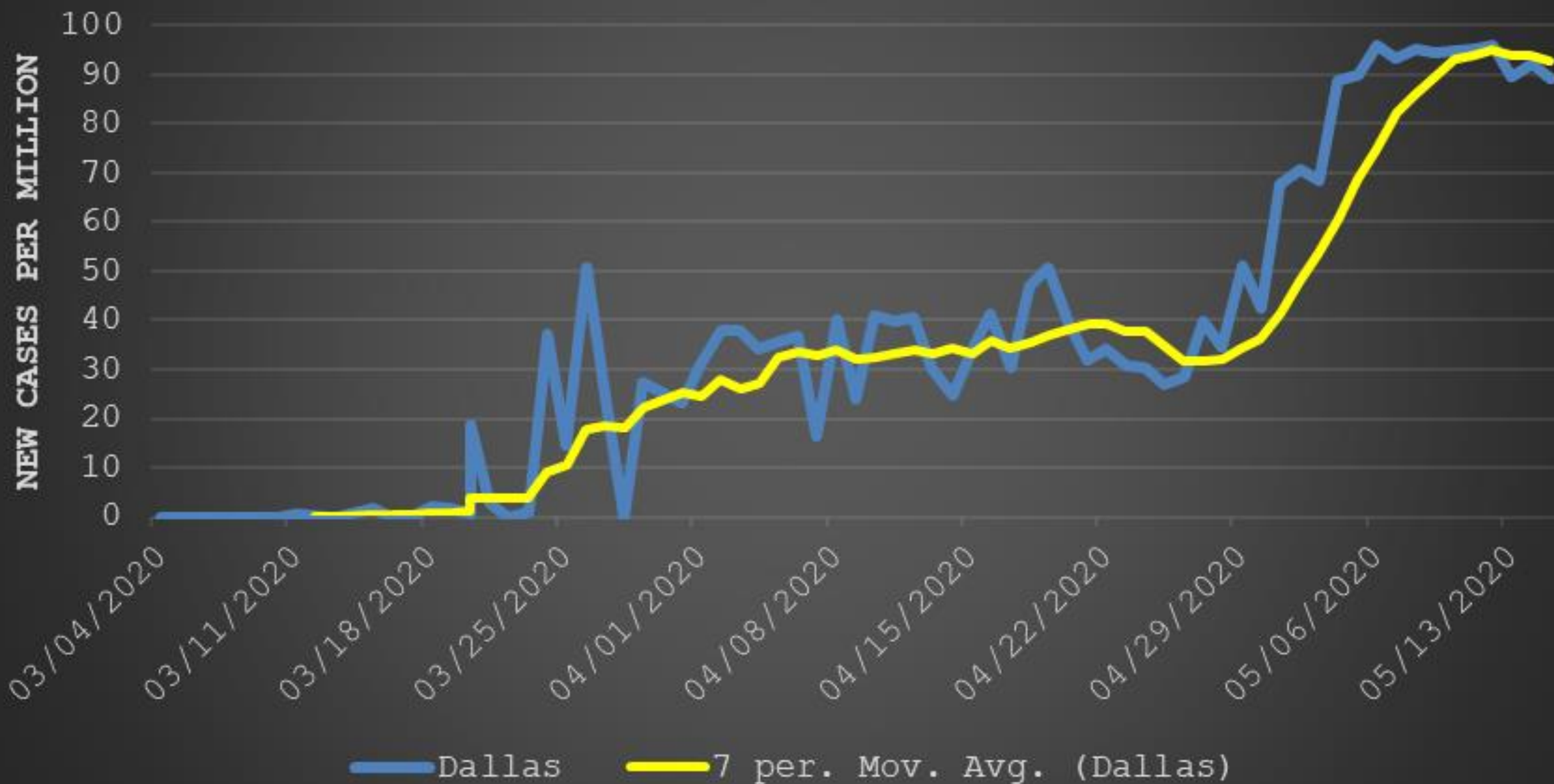




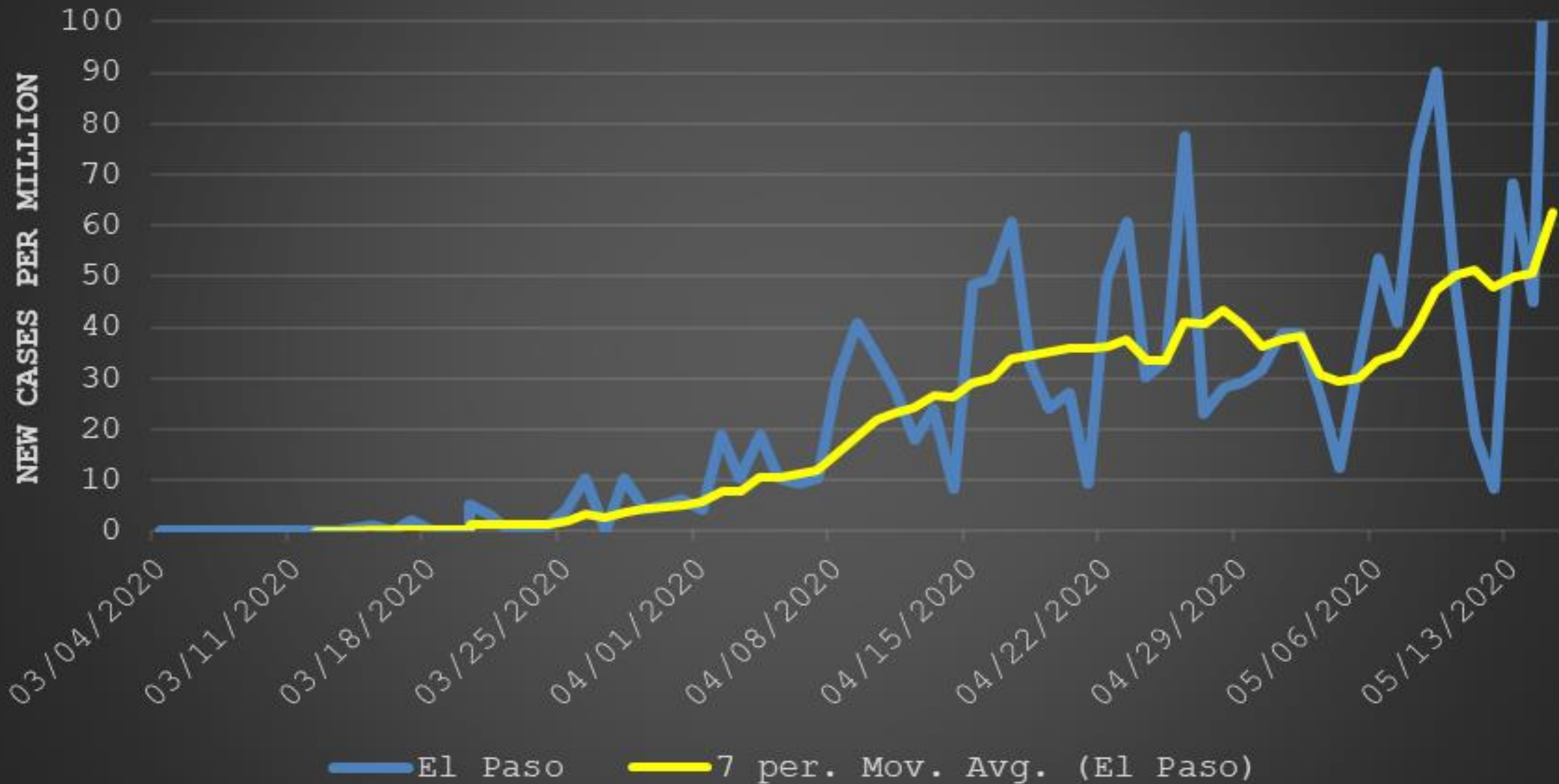
# Bexar



# Dallas



# El Paso

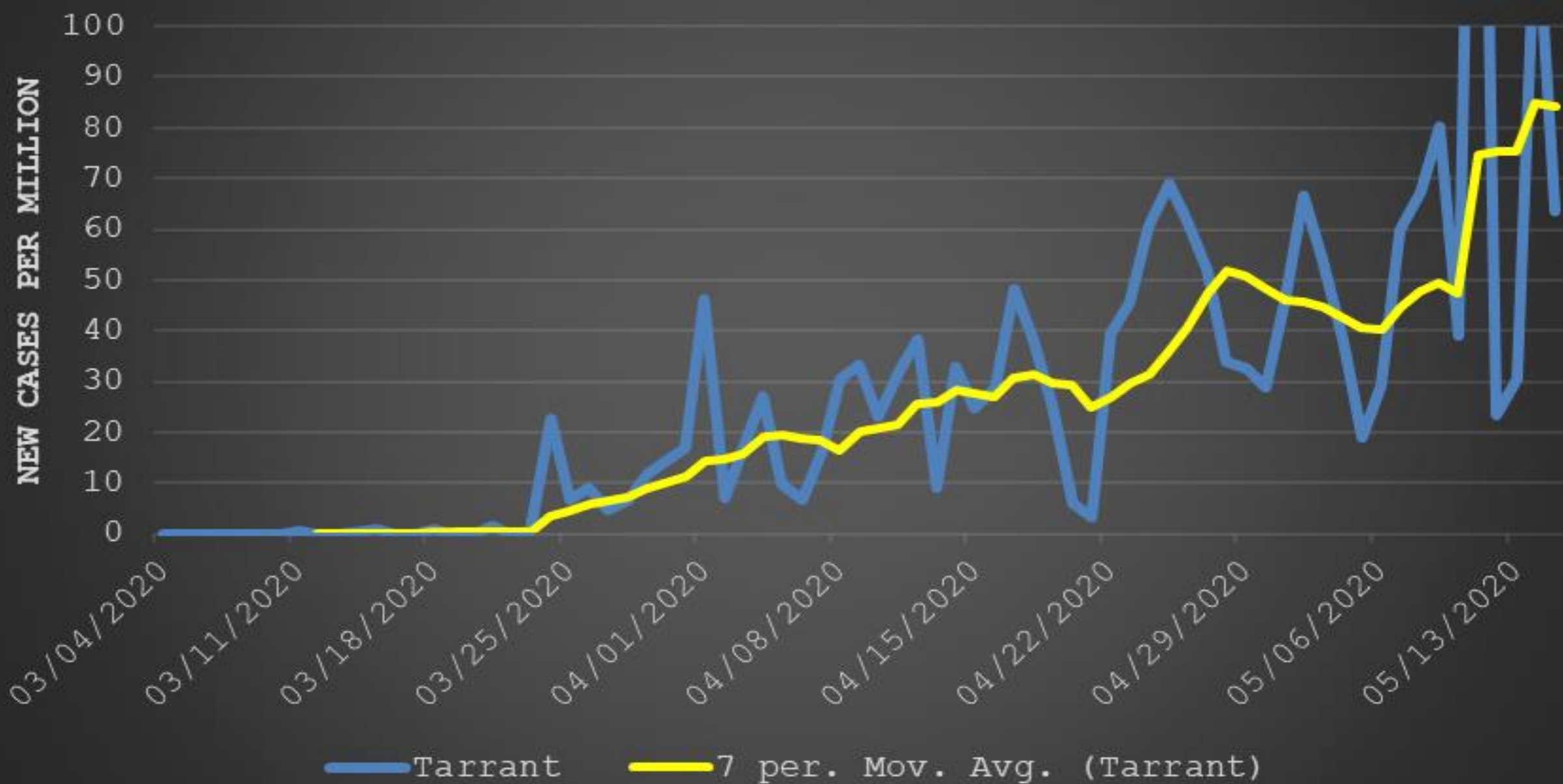


# Harris

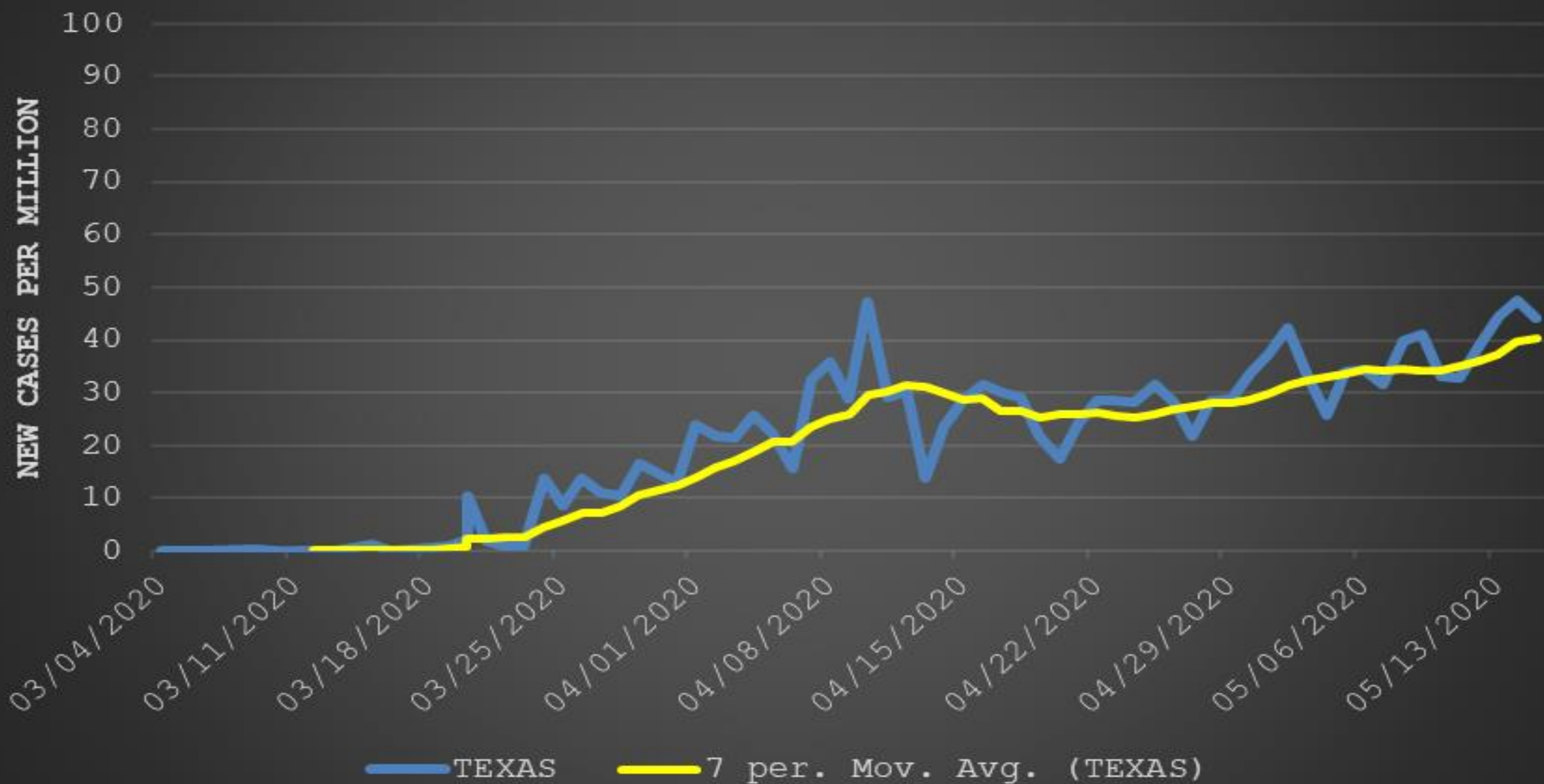




# Tarrant



# TEXAS



# Nursing Home/Long Term Care/Institutional Clusters

Facility	Staff Positive	Staff Deaths	Residents Positive	Resident Deaths	Facility Total	Change
A	0	0	35	0	35	0
B	1	0	2	0	3	0
C	1	0	2	0	3	0
D	1	0	2	1	3	0
E	8	0	3	0	11	2
F	3	0	9	0	12	0
G	10	0	44	8	54	1
H	7	0	13	0	20	1
I	7	0	6	1	13	1
J	9	0	7	2	16	1
K	13	0	8	0	21	1
L	30	1	81	19	111	13
M	35	0	69	11	104	6
N	5	0	0	0	5	0
O	2	0	3	0	5	0
P	4	0	9	2	13	13
Q	18	0	26	2	44	44
TOTAL	154	1	319	46	473	83

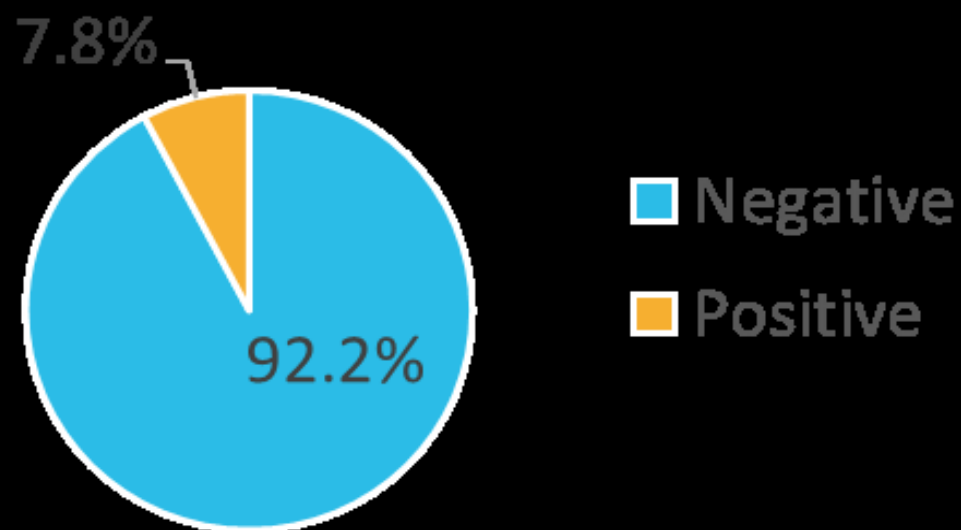
# Non-Institutional Clusters

Standard Industrial Classification	Number
Division C: Construction	
• Construction: General contractors	9
• Construction: Concrete Work	2
• Construction: Electrical, Heating and Air Conditioning	3
• Construction: Excavation	1
• Construction: Plumbing	2
• Construction: Special Trades	2
Division D: Manufacturing	
• Electronic and Other Electrical Equipment and Components, Except Computer Equipment: Semi-Conductor	1
Division G: Retail Trade	
• Retail Trade: Food Service	3
• Retail Trade: General Merchandising	2
• Retail Trade: Grocery	1
Division H: Financial, Insurance, and Real Estate	
• Financial, Insurance, and Real Estate: Real Estate Operators	1
• Financial, Insurance, and Real Estate: Personal Credit Institutions	1
Division I: Services	
• Business Services: Building Cleaning and Maintenance Services	3
• Health Services: Dental	1
• Health Services: Medical Laboratories	3
• Health Services: Specialty Outpatient Services	1
Total	36

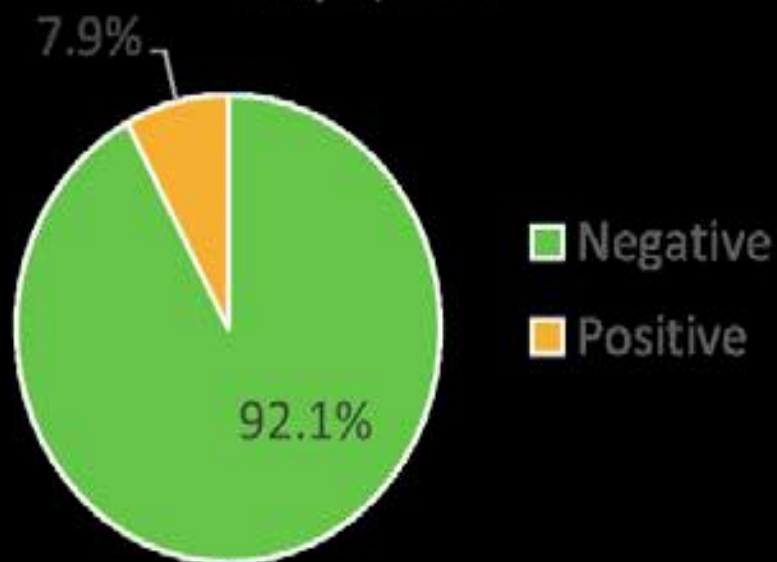


# Construction Site Targeted Testing 5/7-5/8

Construction Site A  
May 7, 2020

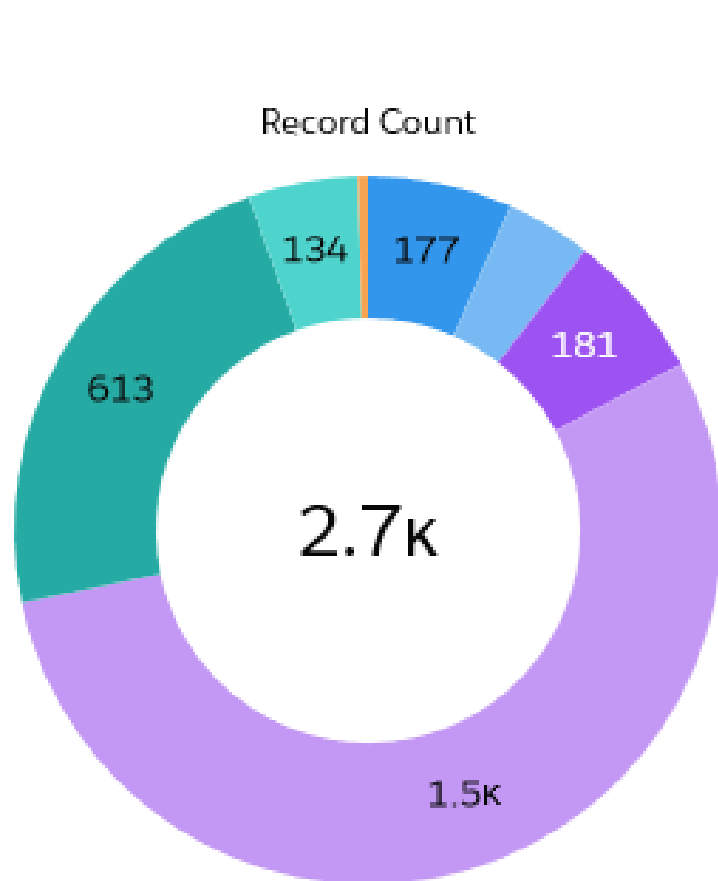


Construction Site B  
May 8, 2020

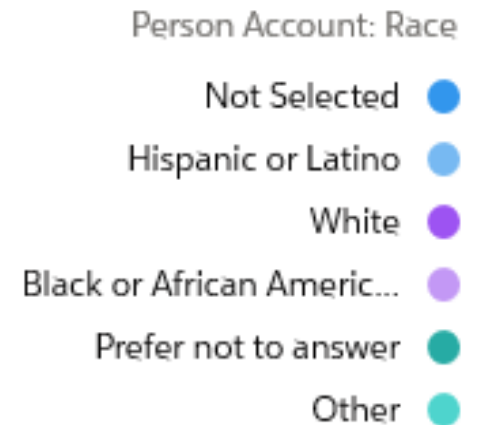
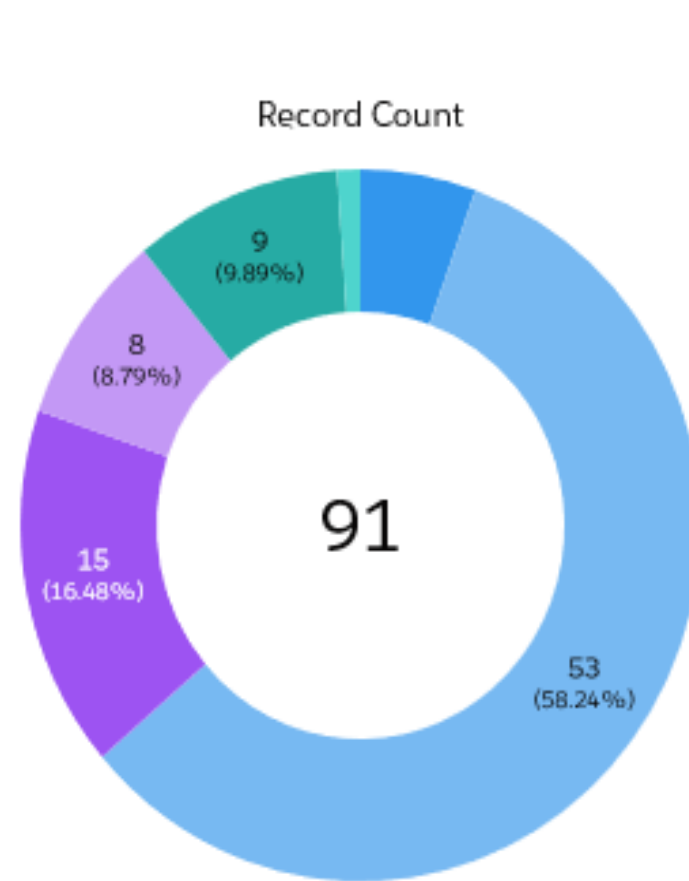
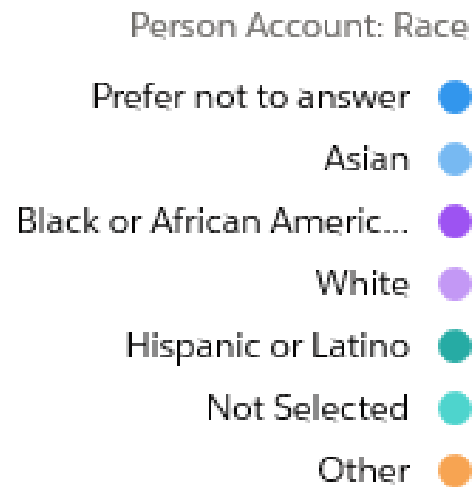


# COVID-19 Public Enrollment for Testing

Persons Tested by Race



Positive Results



# COVID-19: Travis County Jail

- New inmates isolated for 14 days
- All Symptomatic Individuals are Tested
- Official Visits
  - Most are virtual
  - Masks required for official visits
  - Most official visits through physical barrier
- Staggering group activities and cleaning between groups
- Medical evaluations: social distancing and limited to lines of 10
- Ongoing review of testing/targeted testing of asymptomatic inmates/staff

19



# Seroprevalence Study

- Collaboration with University of Texas over 18 month period
  - General Population
  - Subgroups: First Responders/Healthcare Workers, PEH, College Students, Essential Workers
- Specific Aim 1: Cross-validate currently available serological tests in Austin
- Specific Aim 2: Evaluate the seroprevalence rate in the Austin population
- Specific Aim 3: Define the longitudinal serological response to SARS-CoV-2





# Public Testing Enrollment Form

## COVID-19 Assessment, Testing & Contact Tracing App



1

### Register On Portal

Gather information and securely sign-up online or by smartphone.



2

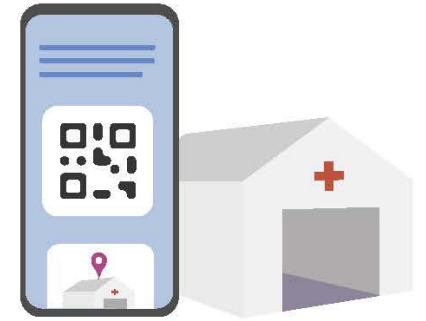
### Self-Assessment and Testing Recommendation

Take a symptom survey and receive a risk rating and testing recommendation.

3

### Scheduling

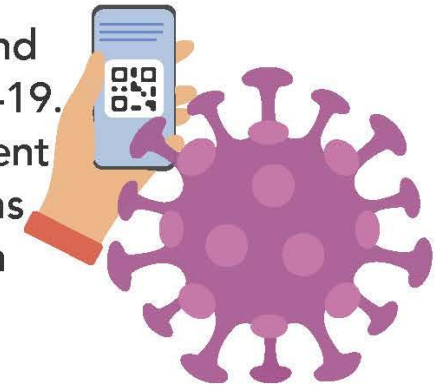
Individuals recommended for testing choose a test location, set an appointment and receive a unique QR code to expedite check-in.



4

### Testing & Results

Individuals check-in and are tested for COVID-19. Individuals are then sent results and instructions on next steps through the secure portal.



[AustinTexas.gov/COVID19](https://austintexas.gov/COVID19)



[www.austintexas.gov/covid19](http://www.austintexas.gov/covid19)

22

