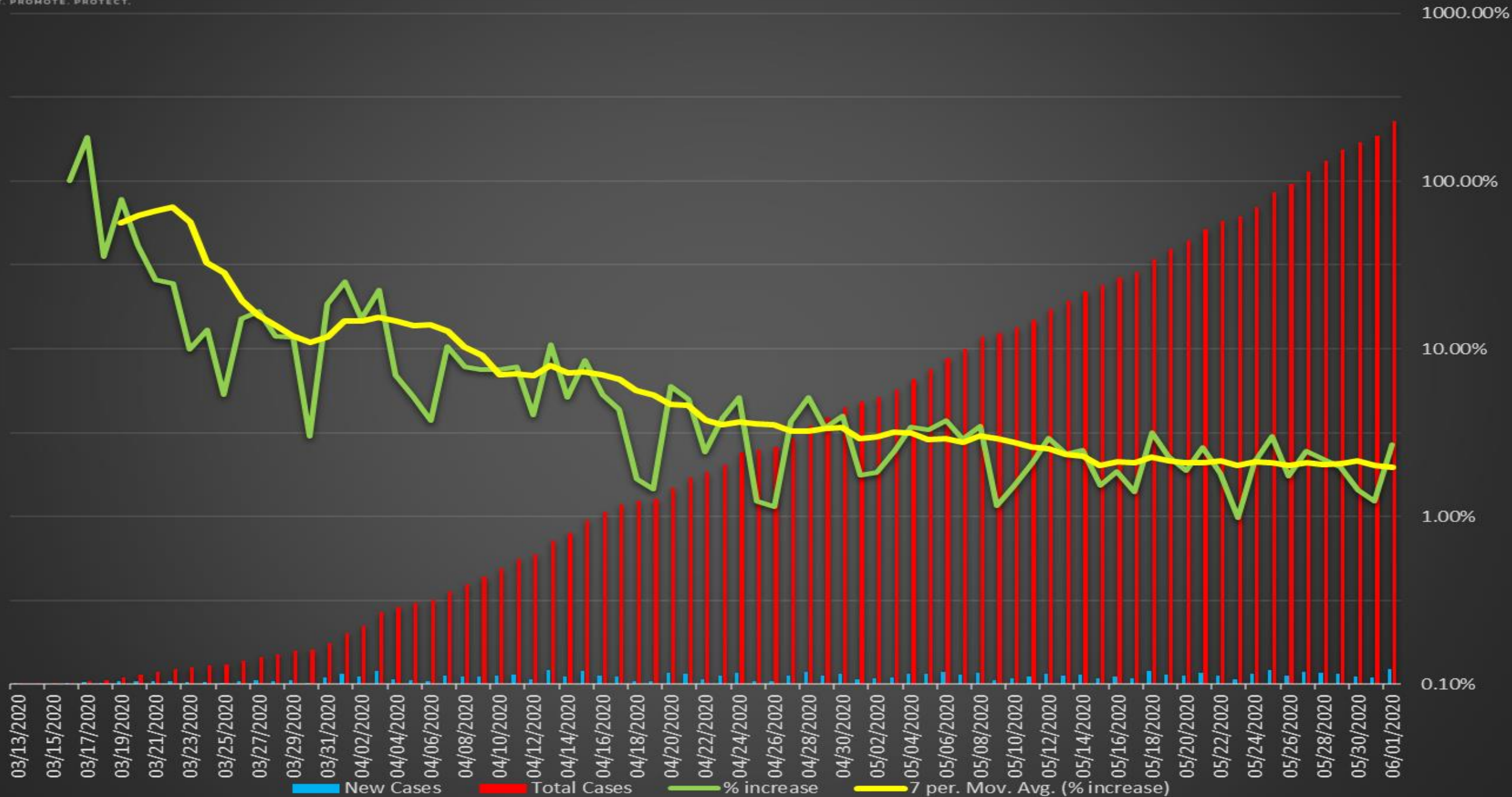

COVID-19 Update

June 6, 2020

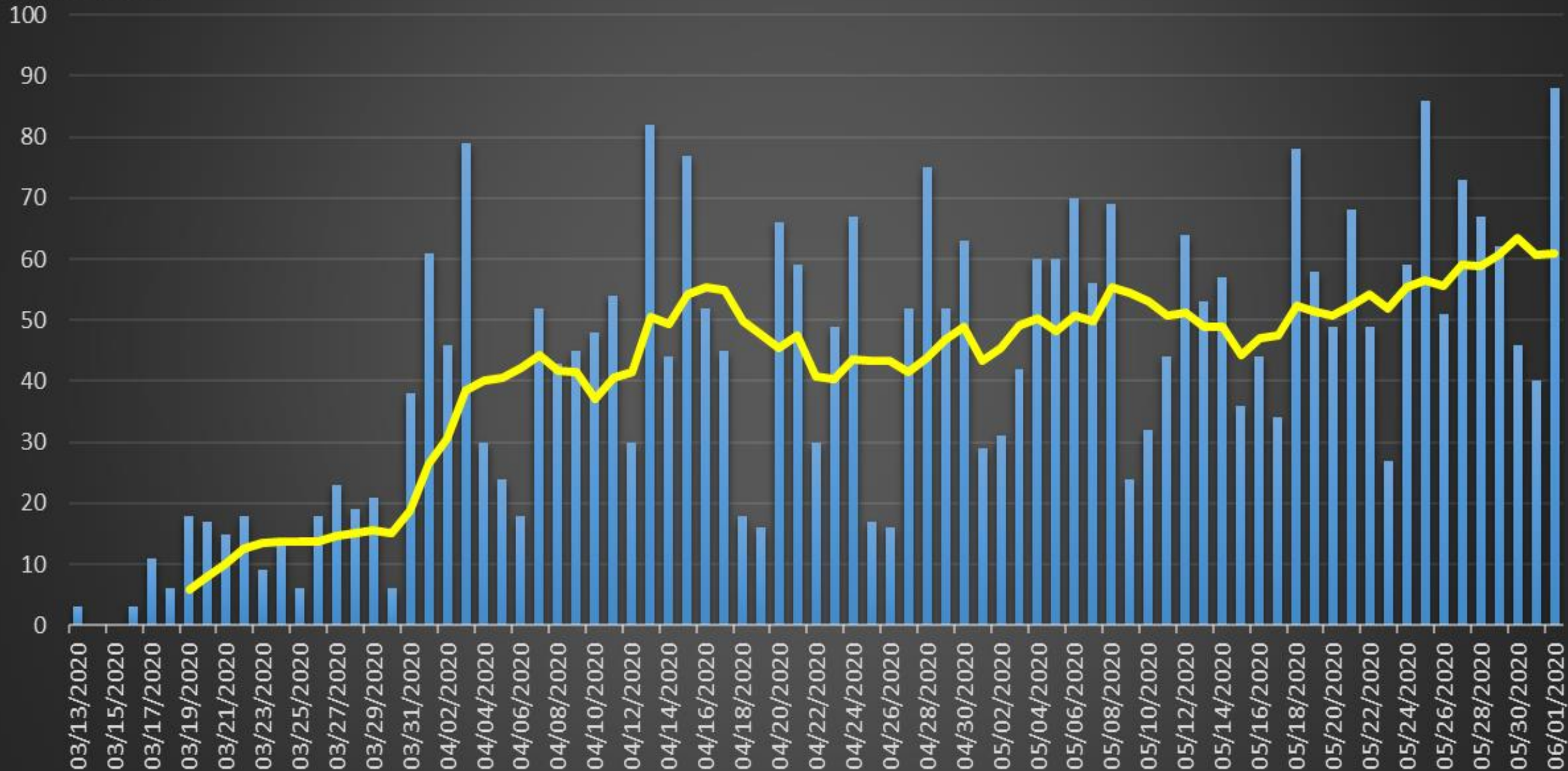
Austin Public Health

Mark Escott, MD, MPH, Interim Health Authority

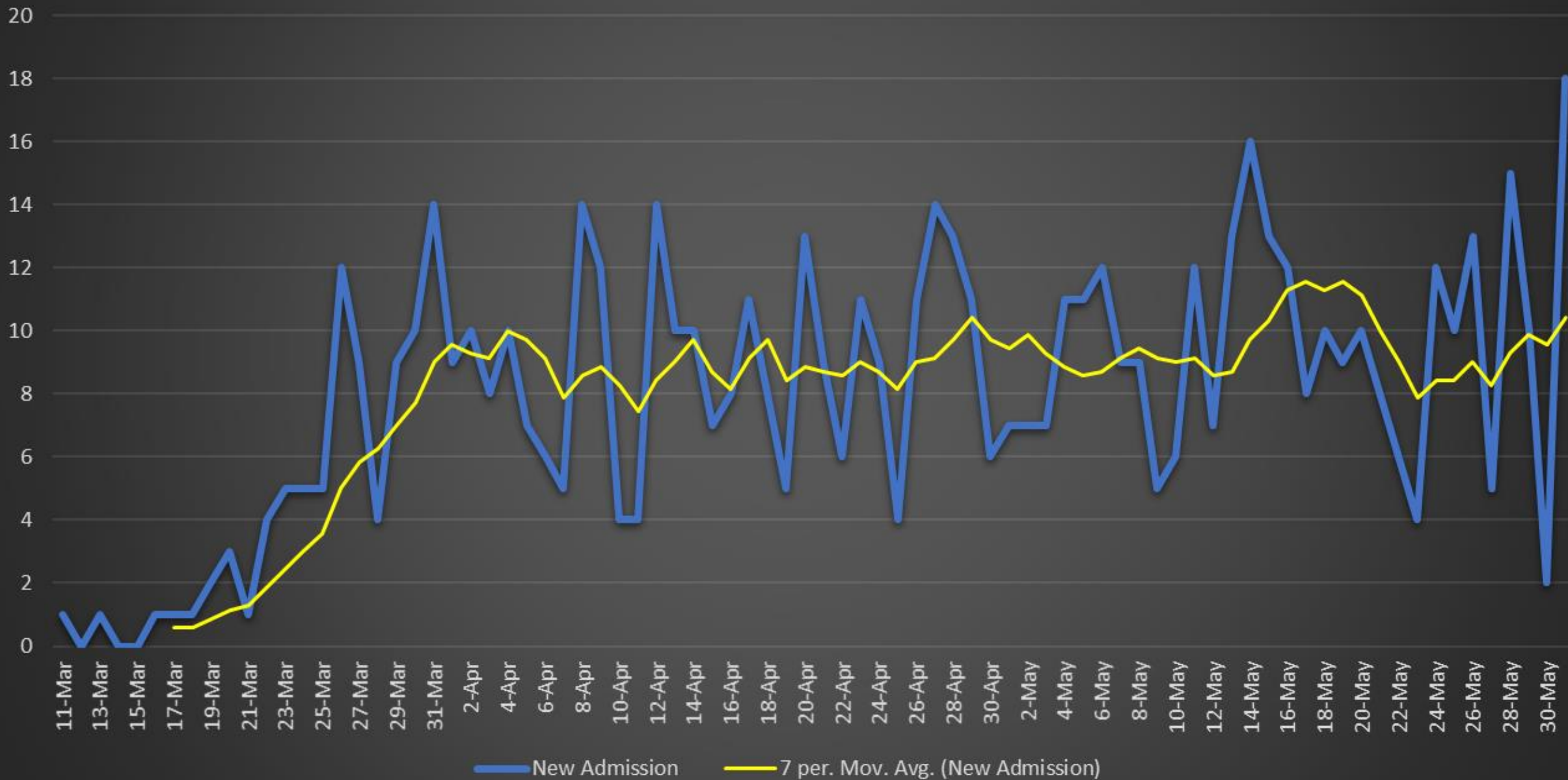
City of Austin - Travis County COVID-19 Positive Cases



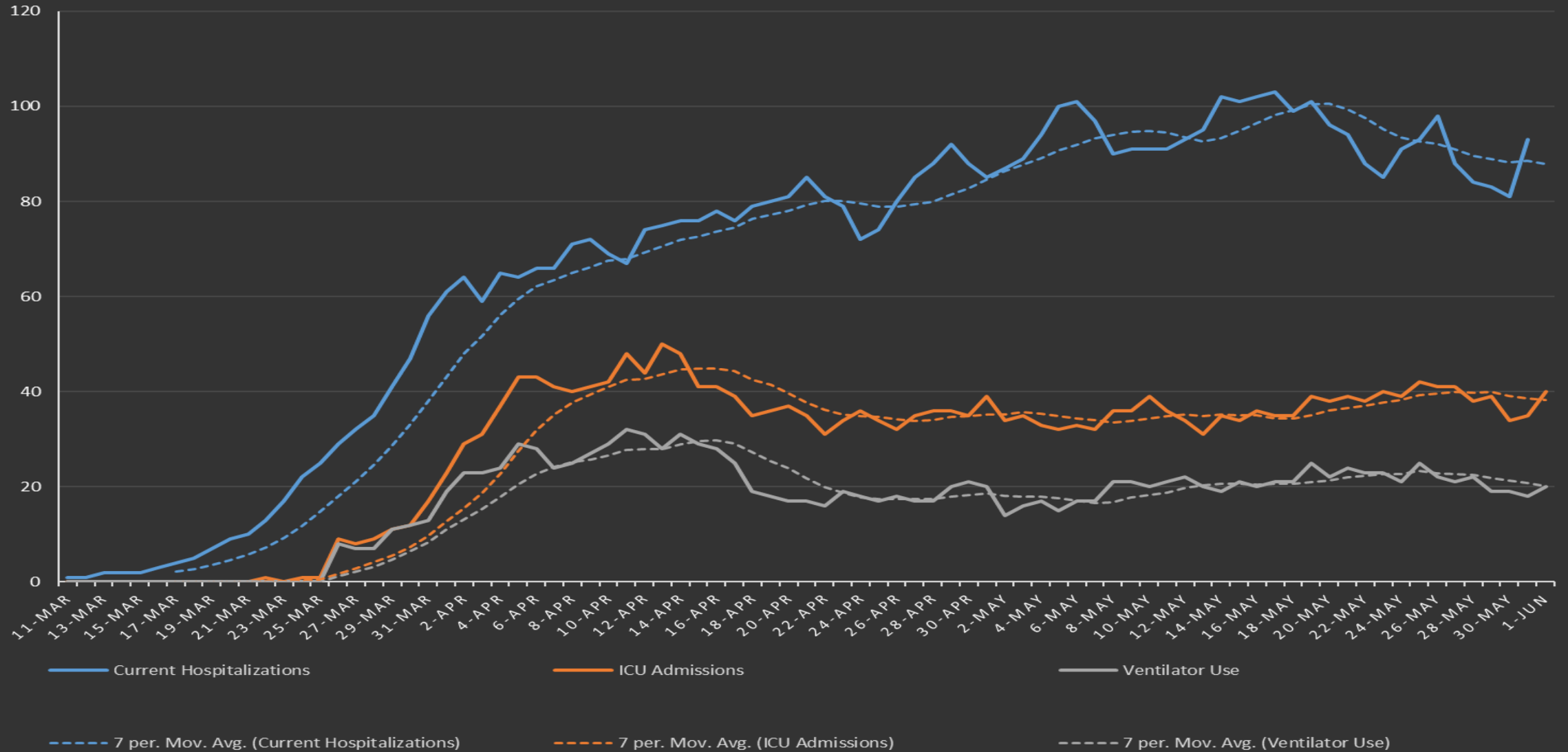
COVID-19 Travis County New Confirmed Cases



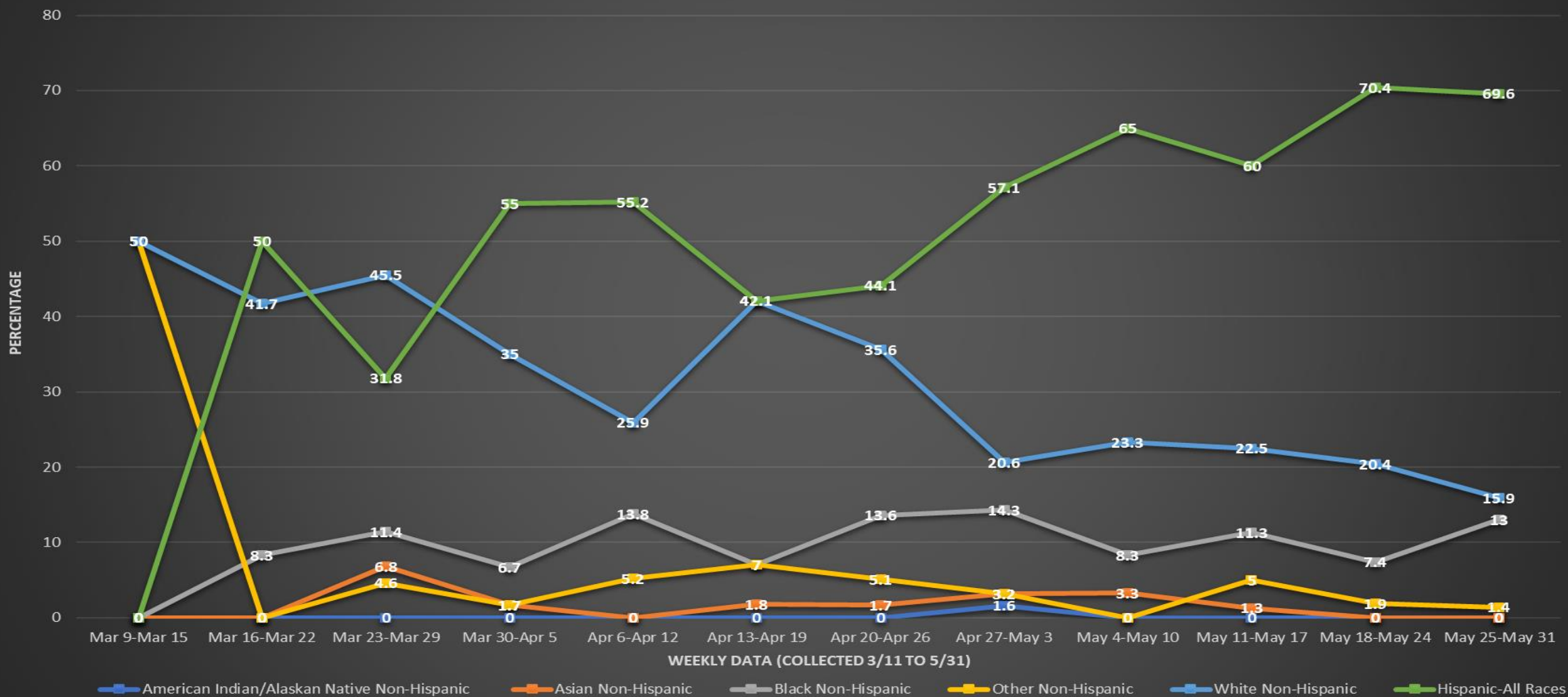
COVID-19 Austin MSA New Admissions



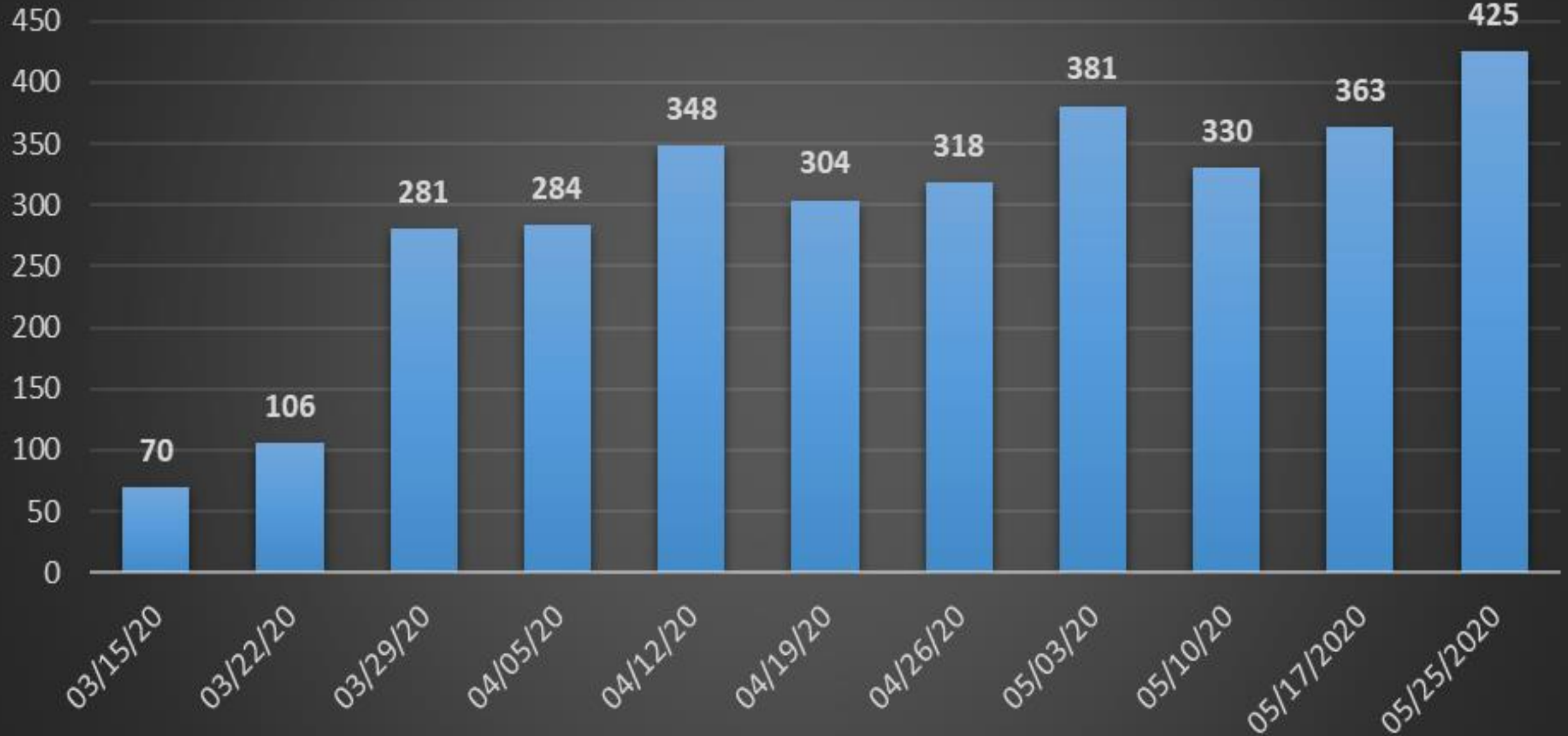
COVID-19 AUSTIN MSA CURRENT HOSPITALIZATIONS, ICU ADMISSIONS, AND VENTILATOR USE



City of Austin - Travis County COVID-19 Hospitalization by Race & Ethnicity (Austin MSA)



COVID-19 Weekly Confirmed Cases



Nursing Home Testing Initiative

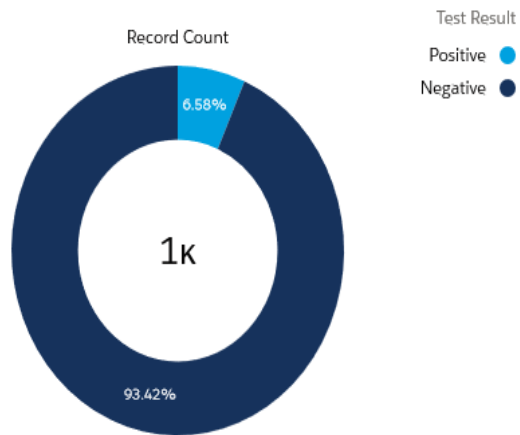
- 33 Facilities tested in Travis County
- 6 Facilities tested using their own staff and labs
- 8 Facilities tested using their own staff and APH test kits
- 19 Facilities were tested using City of Austin staff and test kits
- 4128 Tests were performed in 24 Facilities with no known COVID-19 cases

Nursing Home Testing Initiative

- 1165 Residents tested
 - Positive: 2
 - Negative: 1163
 - Percent Positive: 0.17%
- 1806 Staff tested
 - Positive: 9
 - Negative: 1797
 - Percent Positive: 0.5%
- 778 Tests pending

Facility	Staff Positive	Staff Deaths	Residents Positive	Resident Deaths	Facility Total	Change
E	8	0	3	0	11	0
F	3	0	9	2	12	0
G	10	0	44	8	54	0
H	8	0	13	0	21	2
I	7	0	6	0	13	2
J	9	0	6	2	15	0
K	11	0	8	0	19	1
L	33	1	82	22	115	3
M	36	0	69	11	105	3
N	6	0	0	0	6	1
O	1	0	3	0	4	0
P	6	0	12	3	18	4
Q	20	0	34	7	54	7
R	1	0	0	0	1	0
S	2	0	0	0	2	0
T	1	0	0	0	1	0
U	1	0	0	0	1	0
V	1	0	0	0	1	0
W	2	0	1	0	3	1
X	2	0	0	0	2	0
Y	1	0	0	0	1	0
Z	3	0	0	0	3	0
AA	1	0	0	0	1	1
BB	2	0	0	0	2	2
TOTAL	175	1	290	55	465	27

Lab Results Last 7 Days



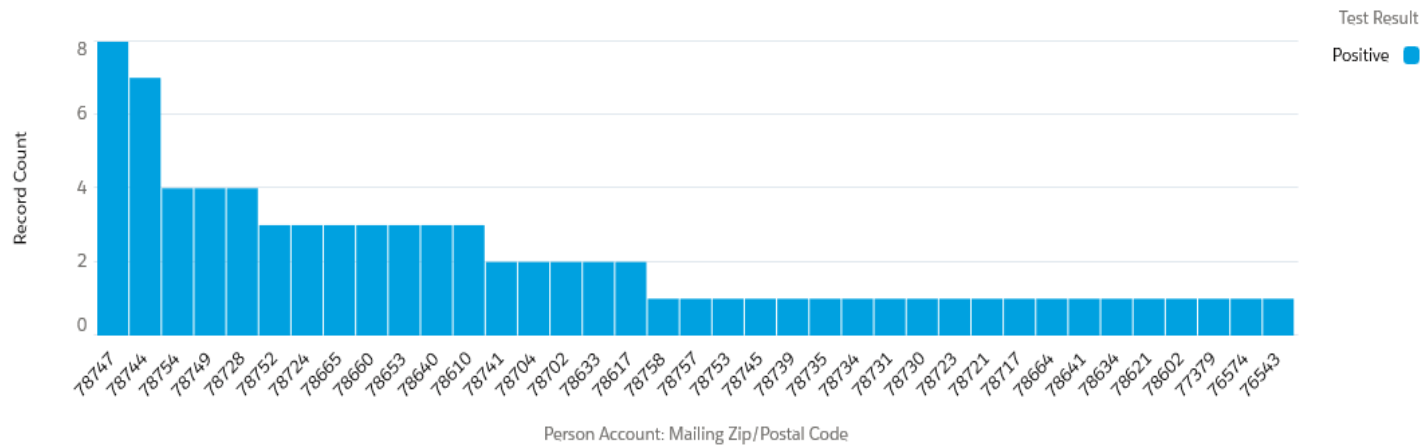
[View Report \(History Results Percentage of Total\)](#)

Tested Last 7 Days

1.1K

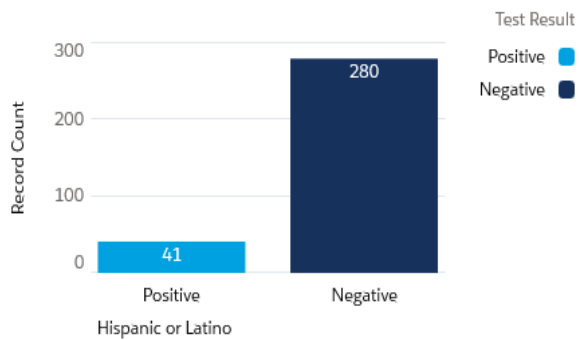
[View Report \(History Persons Tested\)](#)

Positive Results Last 7 Days by Zip

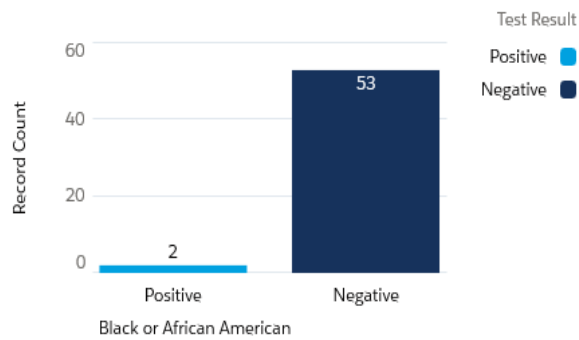


[View Report \(History Positive Results by ZIP\)](#)

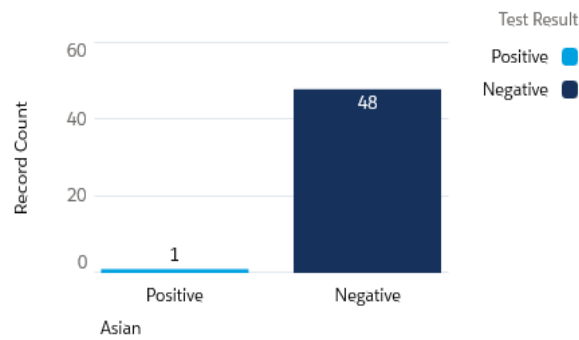
Lab Result Last 7 Days



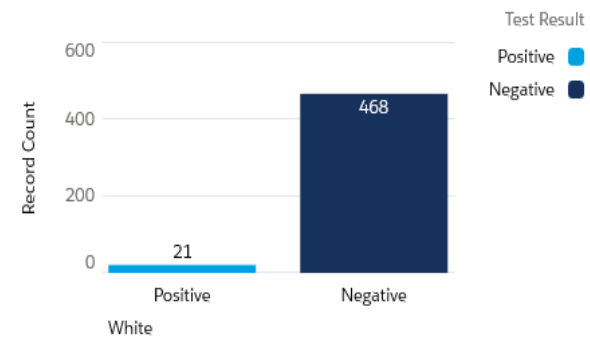
Lab Result Last 7 Days



Lab Result Last 7 Days



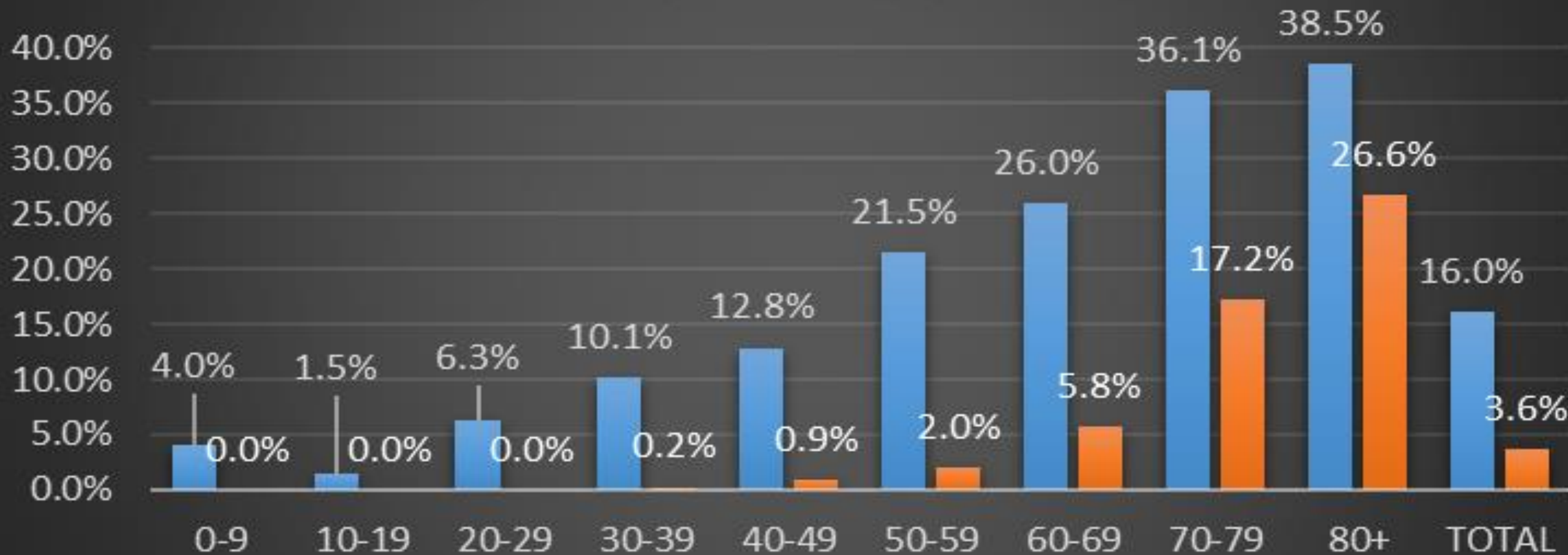
Lab Result Last 7 Days



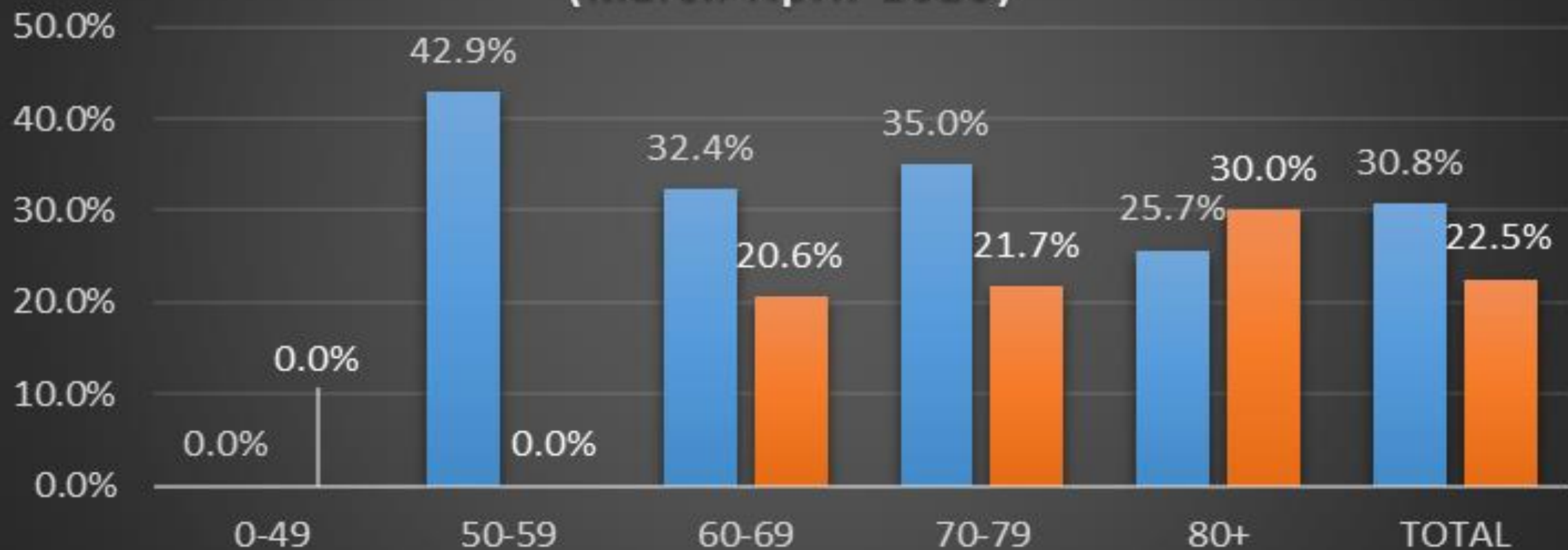
City of Austin – Travis County COVID-19

- All individuals with onset of illness in March and April 2020
- 1984 Cases included in the dataset
- All individuals followed until May 21st
- All individuals will have a final assessment on June 1st
- Data is preliminary and has not been analyzed for statistical significance
- Data has not been peer-reviewed

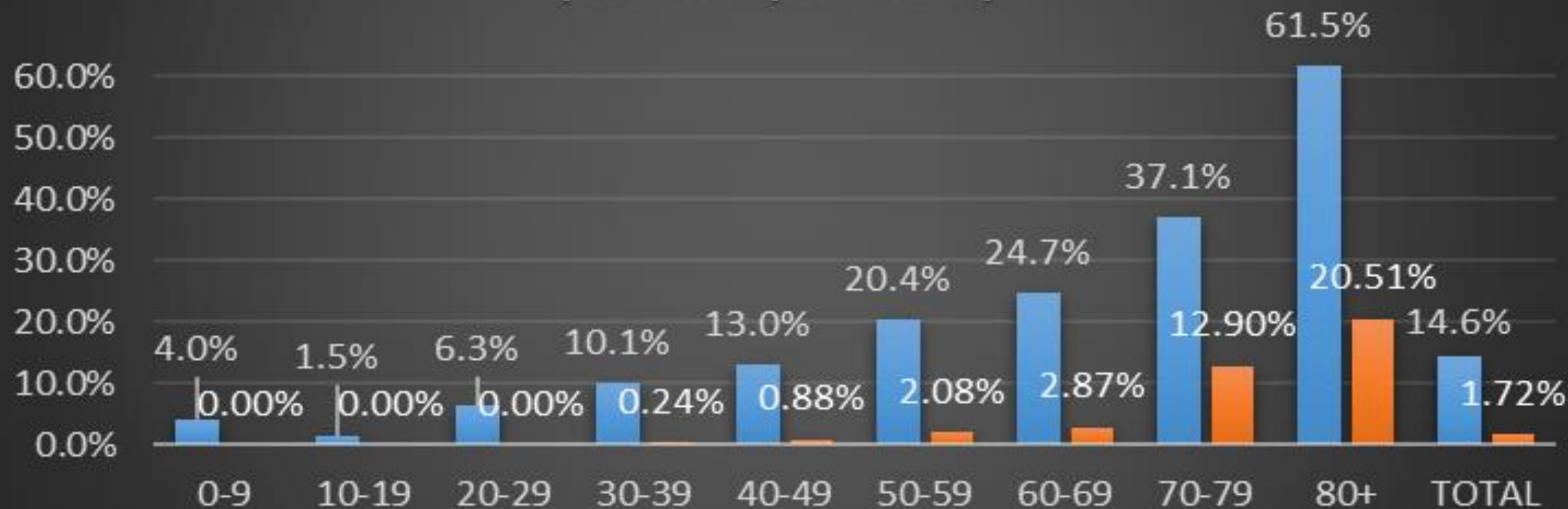
Austin/Travis County COVID-19 Hospitalization and Case Fatality Rates (March-April 2020) (n=1,984)



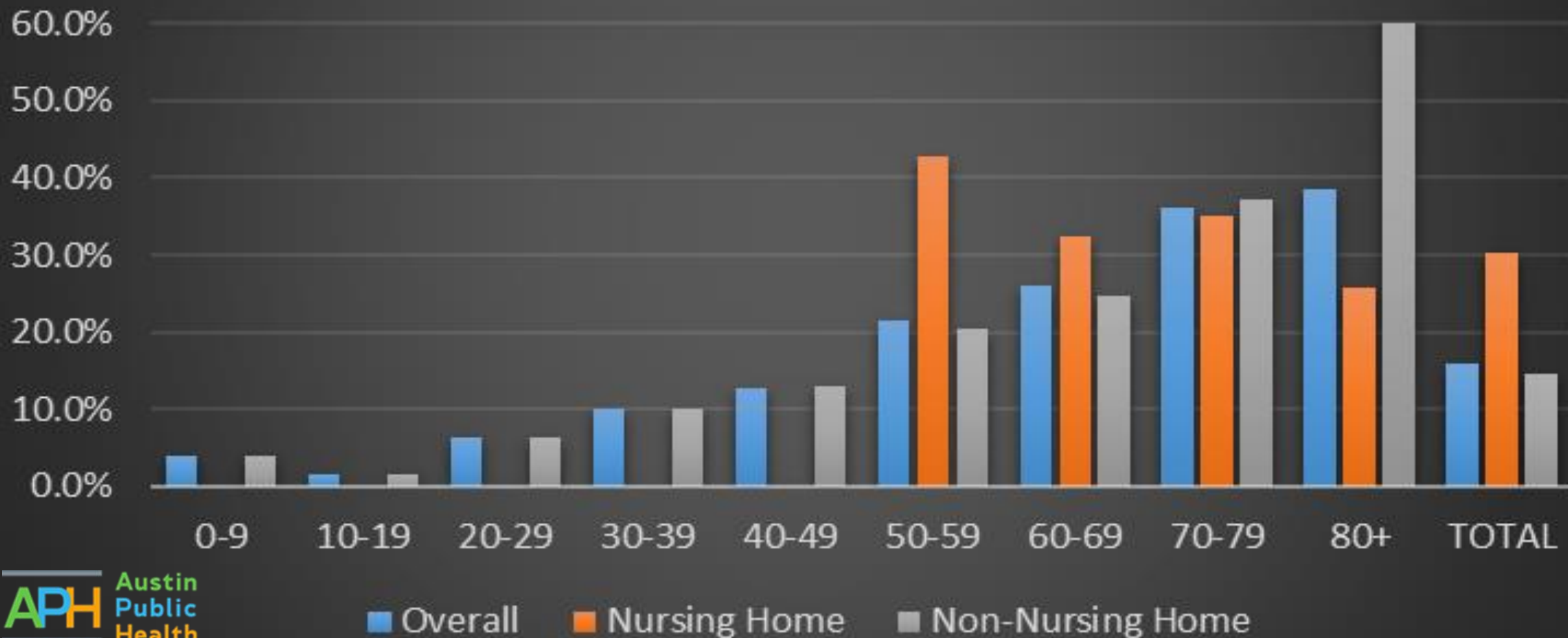
Austin/Travis County COVID-19 Nursing Home Residents Hospitalization and Case Fatality Rates (March-April 2020)



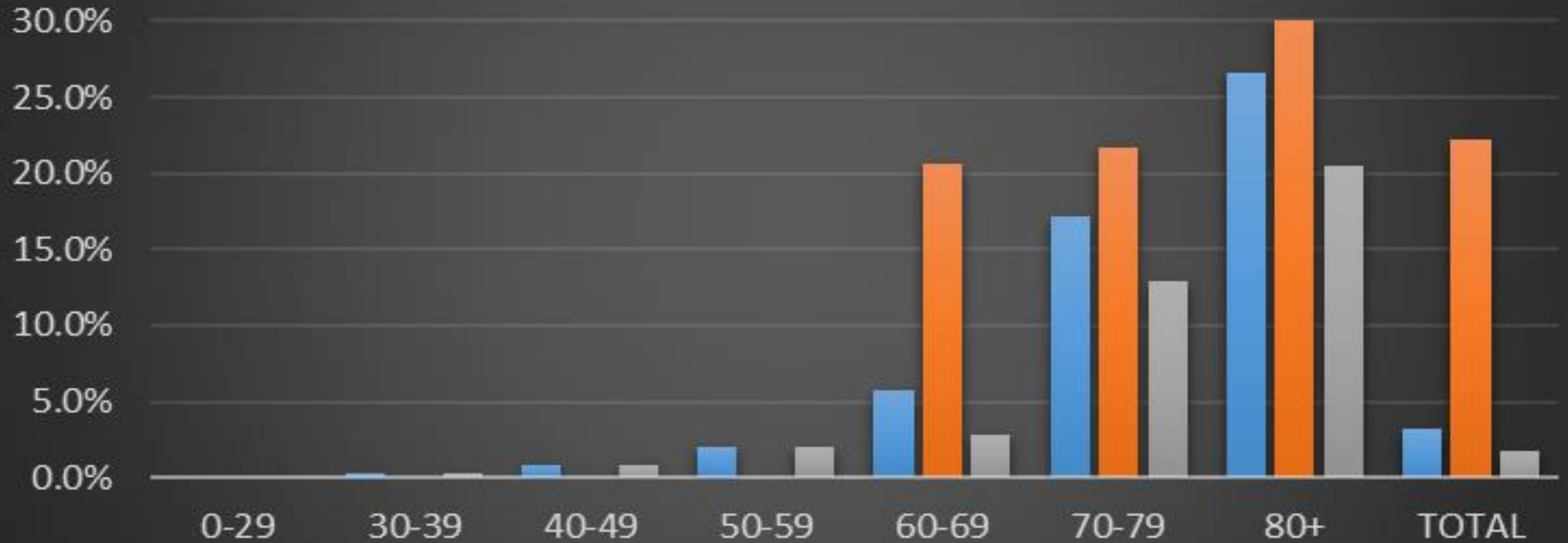
Austin/Travis County COVID-19 Non-Nursing Home Residents Hospitalization and Case Fatality Rates (March-April 2020)



Austin/Travis County COVID-19 Hospitalization Rate (March-April 2020)

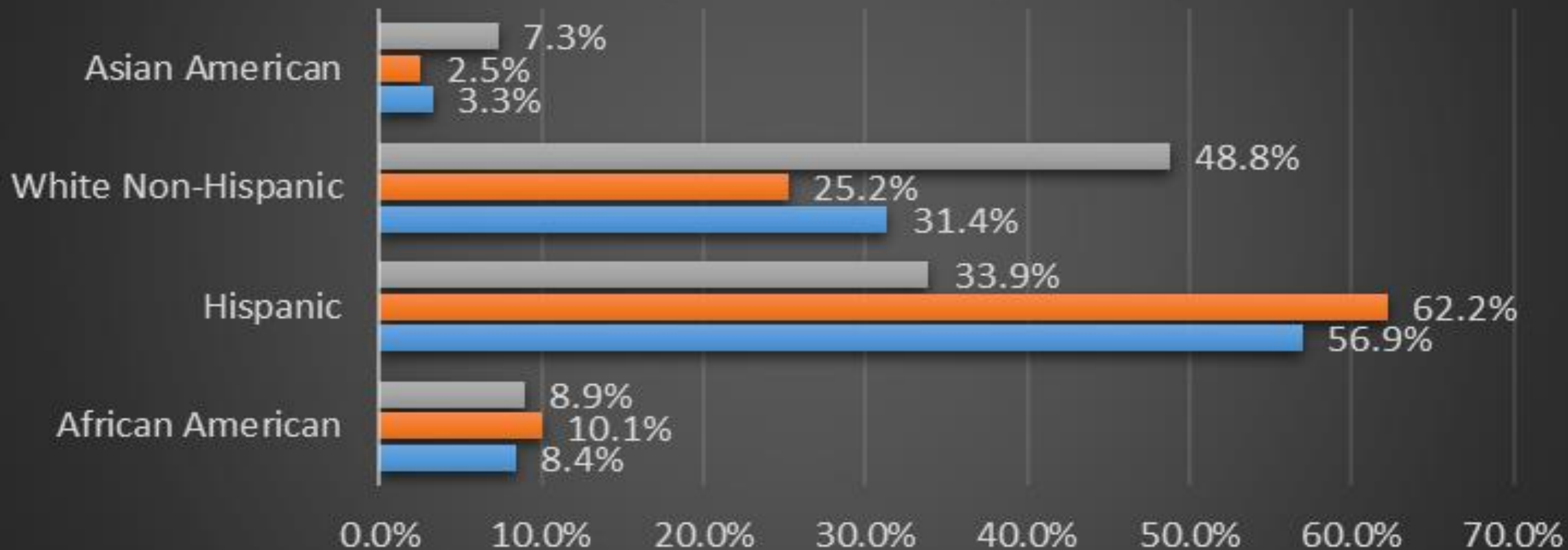


Austin/Travis County COVID-19 Case Fatality Rate (March-April 2020)



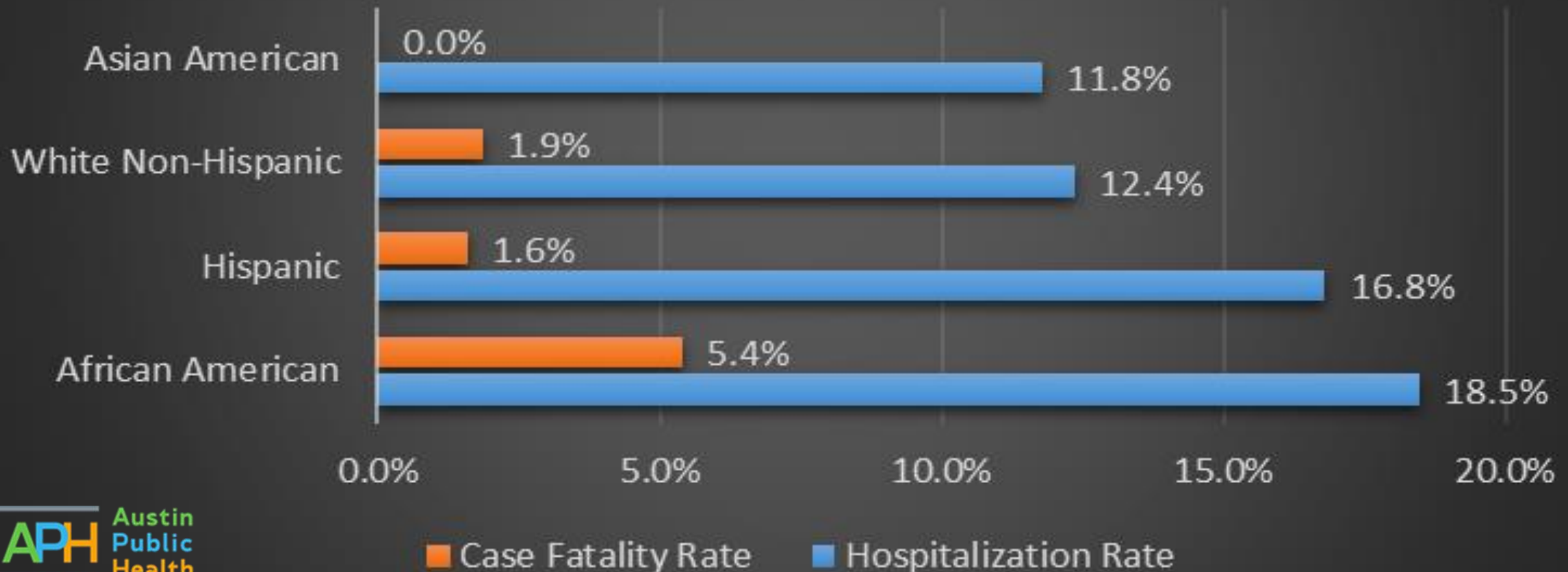
Austin/Travis County COVID-19 Demographics March-April 2020

Non-Nursing Home Cases (n=1547)



Austin/Travis County COVID-19 Hospitalization and Case Fatality Rate

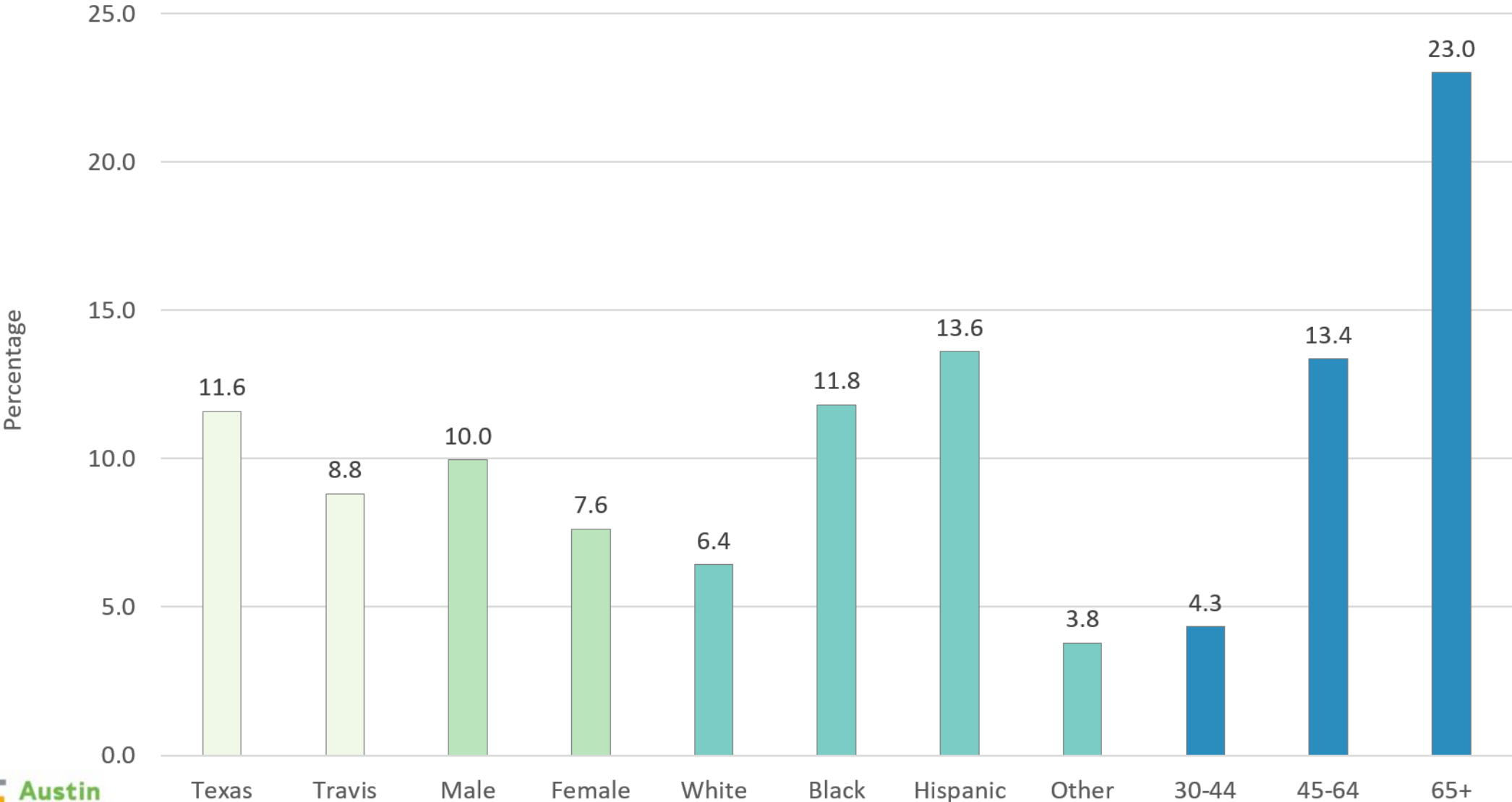
Non-Nursing Home Cases n=1,547 (cases) n= 238
(hospitalizations) n=30 (deaths)



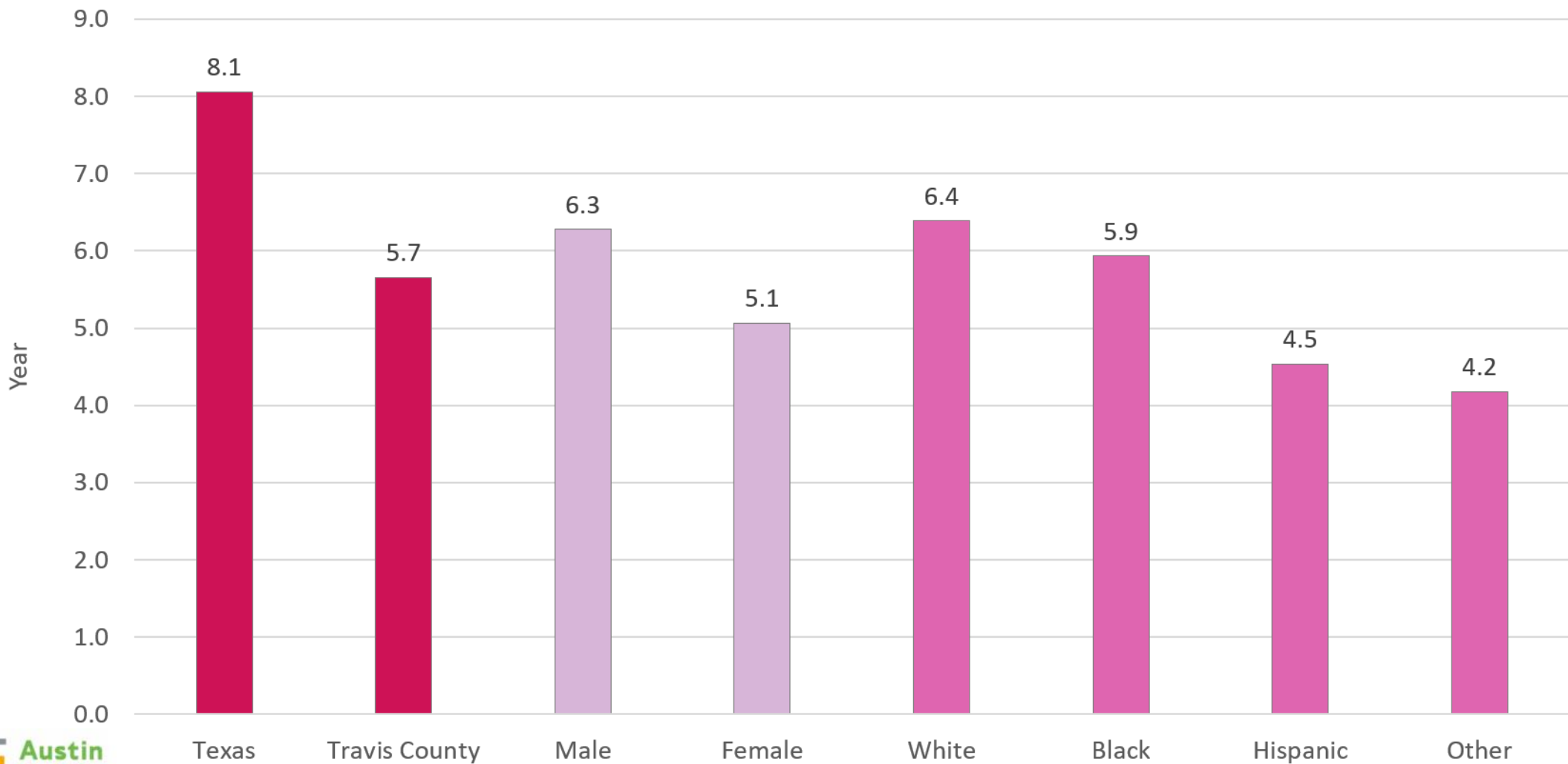
Case Fatality Rates

- **White Non-Hispanic: 1.9%** (95% CI: 0.9-3.5)
- **Hispanic: 1.6%** (95% CI: 0.9-2.7)
- **African American: 5.4%** (95% CI: 2.2-11.1)
- **Non-Nursing Home Overall: 1.7%** (95% CI: 1.2-2.5)

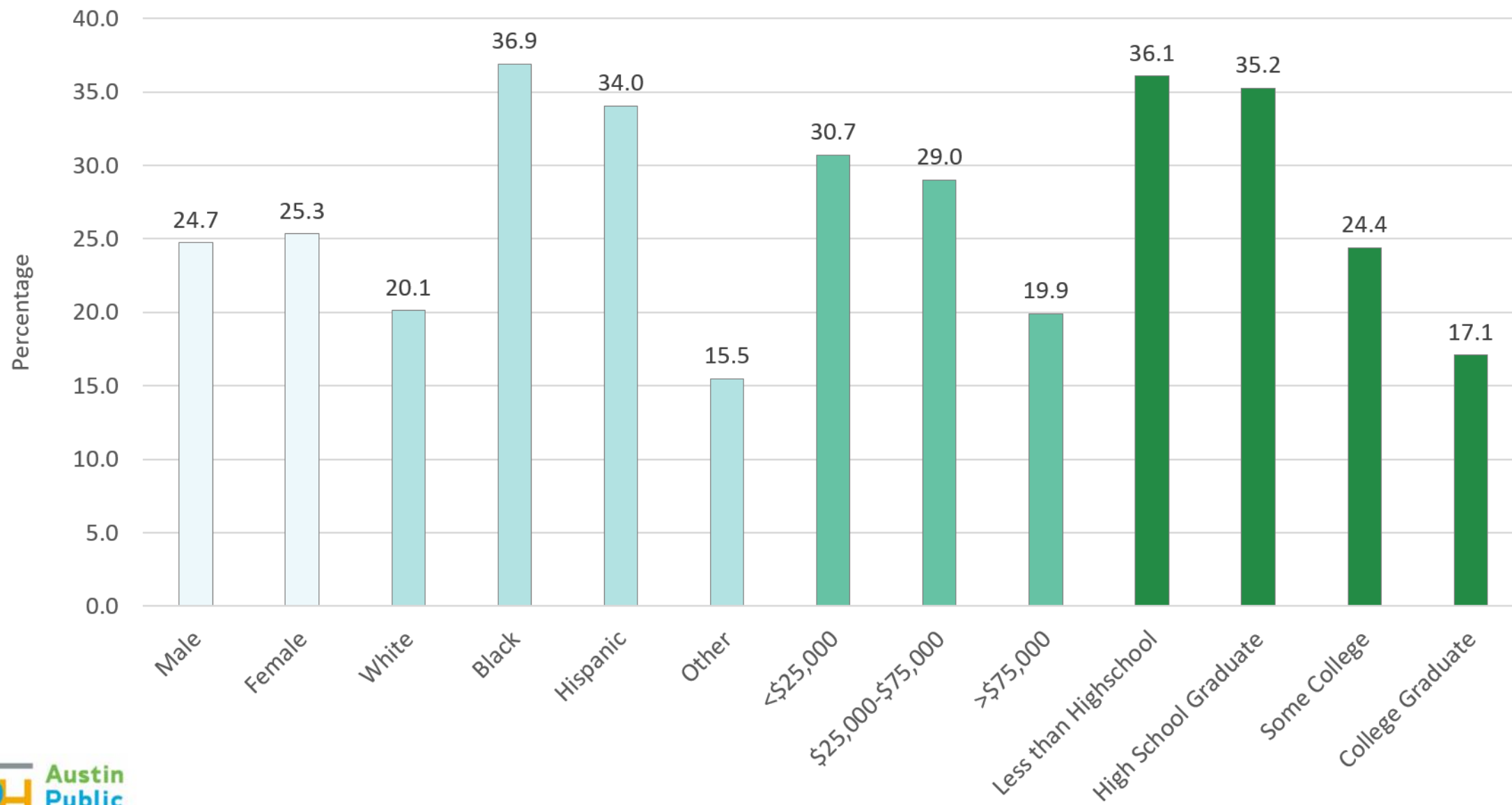
Diabetes Prevalence by Demographic, Travis County, 2014-2018



Prevalence of Cardiovascular Disease by Demographics, Travis County, 2014-2018



Prevalence of Obesity, Travis County, 2014-2018



Prevalence of Hypertension (High Blood Pressure), Travis County, 2015-2018

