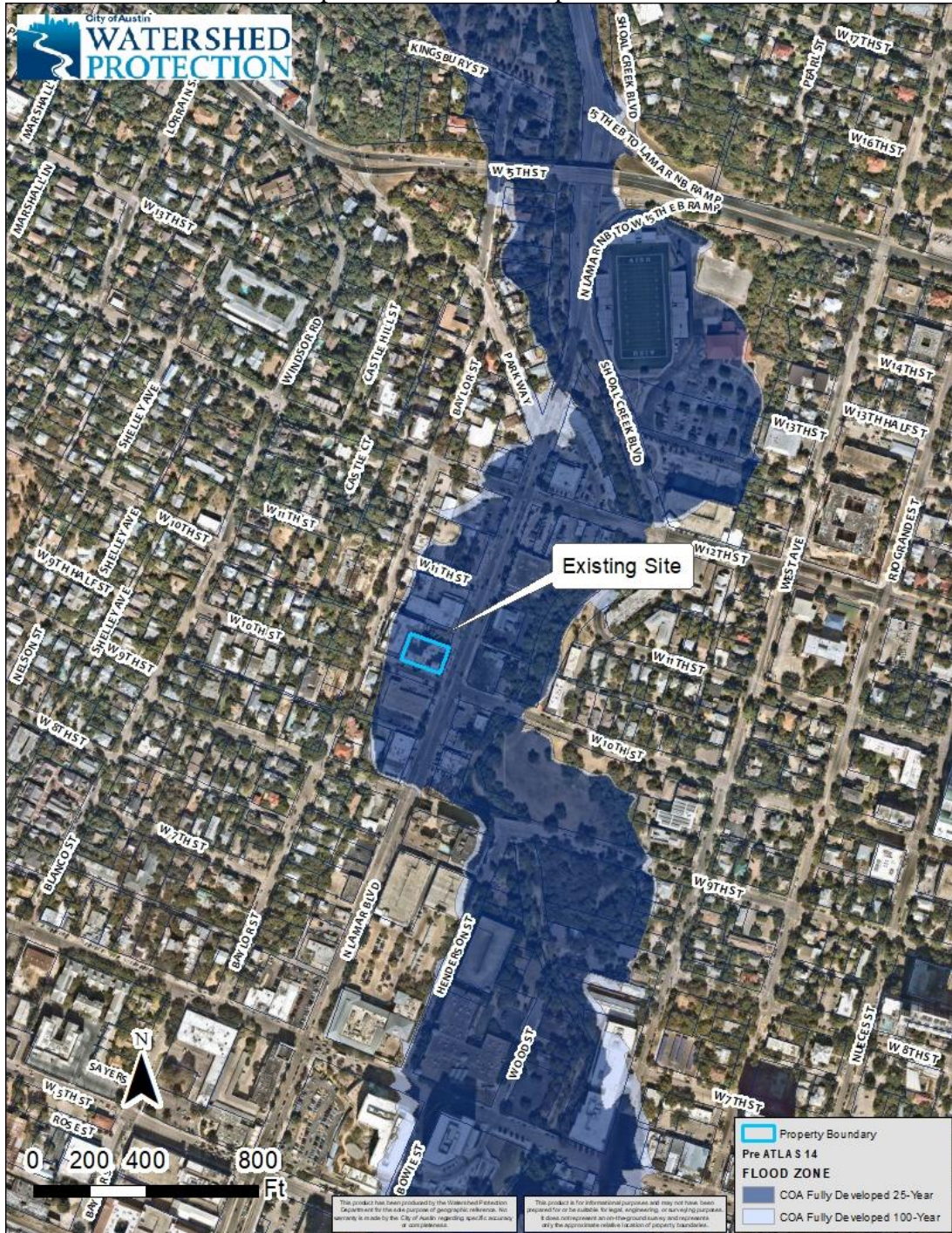


Backup Information Packet

Concerning a public hearing and consideration of an ordinance regarding floodplain variances for conversion of the ground level from vacant space to parking spaces at 1000 North Lamar Blvd within the 25-year and 100-year floodplains of Shoal Creek.

Site Location Map with Current Floodplains for 1000 N. Lamar



Zoomed-in Site Location Map for 1000 N. Lamar

