

# Property Proposed For Lease Located At 5812 North Interstate Highway 35



City of Austin  
Real Estate Services

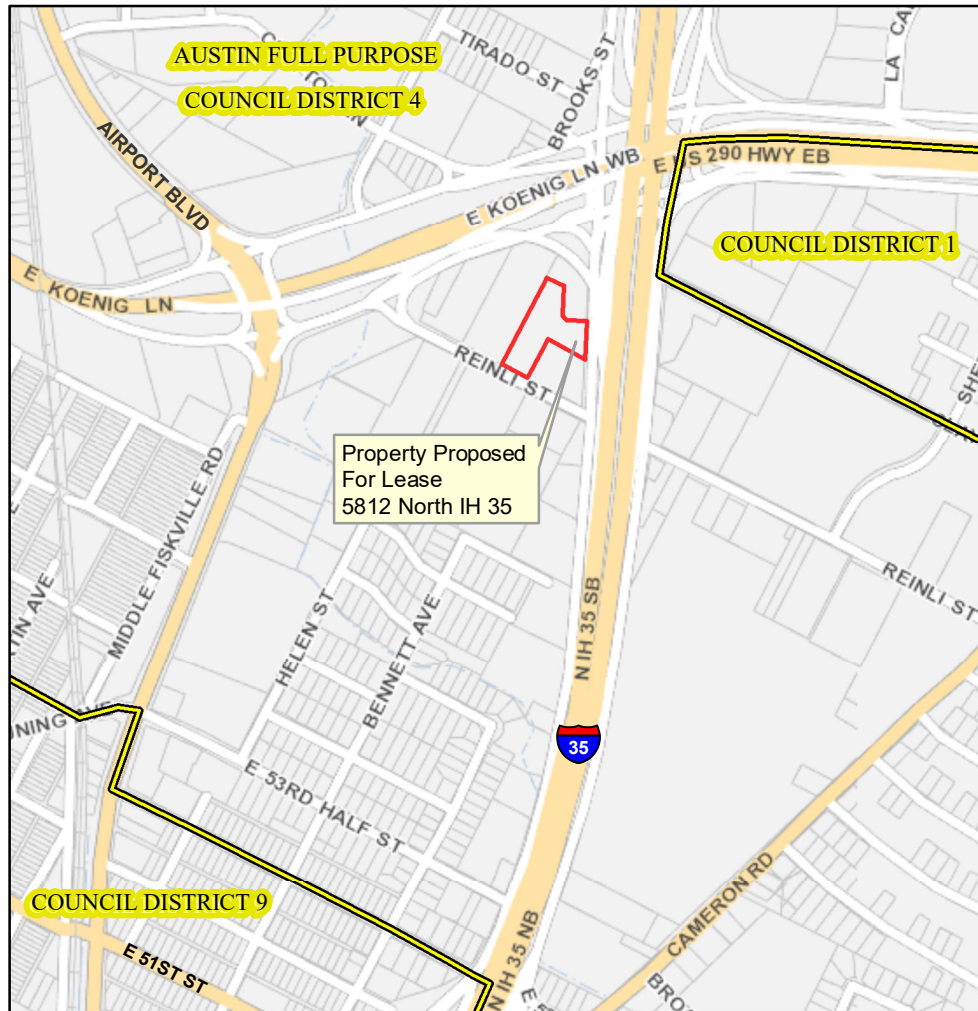


This product is for informational purposes and may not have been prepared for or be suitable for legal, engineering, or surveying purposes. It does not represent an on-the-ground survey and represents only the approximate relative location of property boundaries.

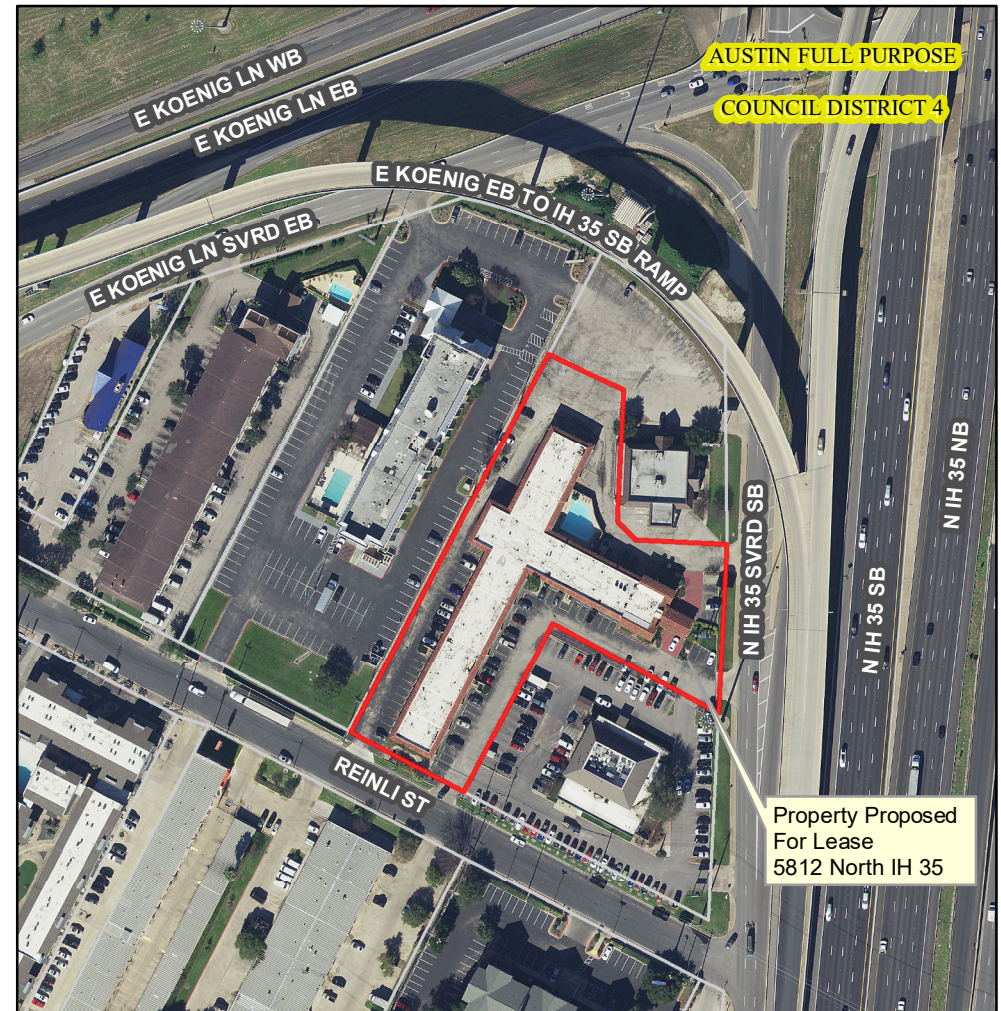
This product has been produced by the Office of Real Estate Services for the sole purpose of geographic reference. No warranty is made by the City of Austin regarding specific accuracy or completeness.

Produced by MMcDonald, 8/6/2020

 Property Proposed for Lease  
 TCAD Parcels  
2019 Aerial Imagery, City of Austin



0 1,000 2,000 Feet



0 200 400 Feet