

---

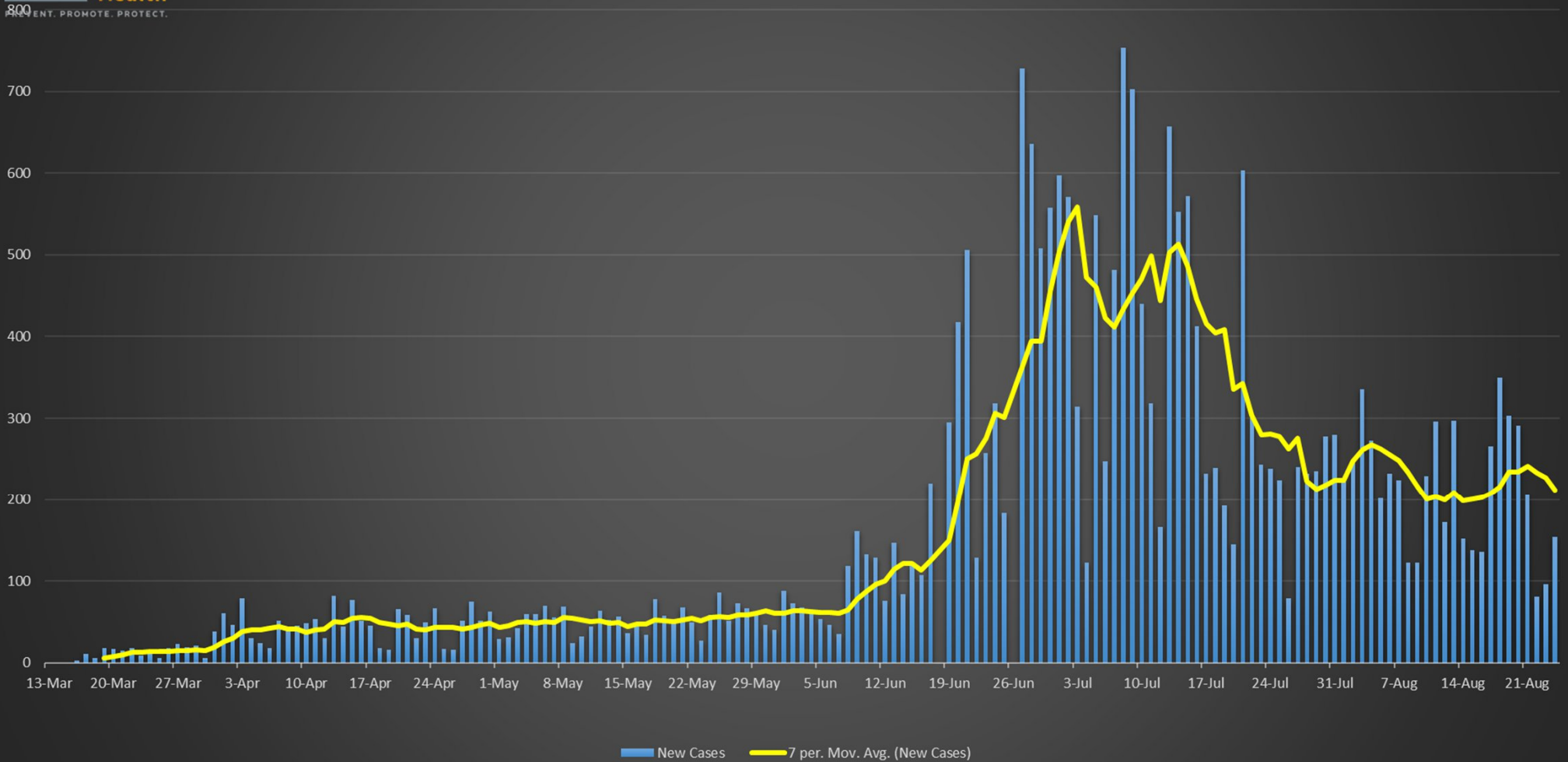
# COVID-19 Update

August 25, 2020

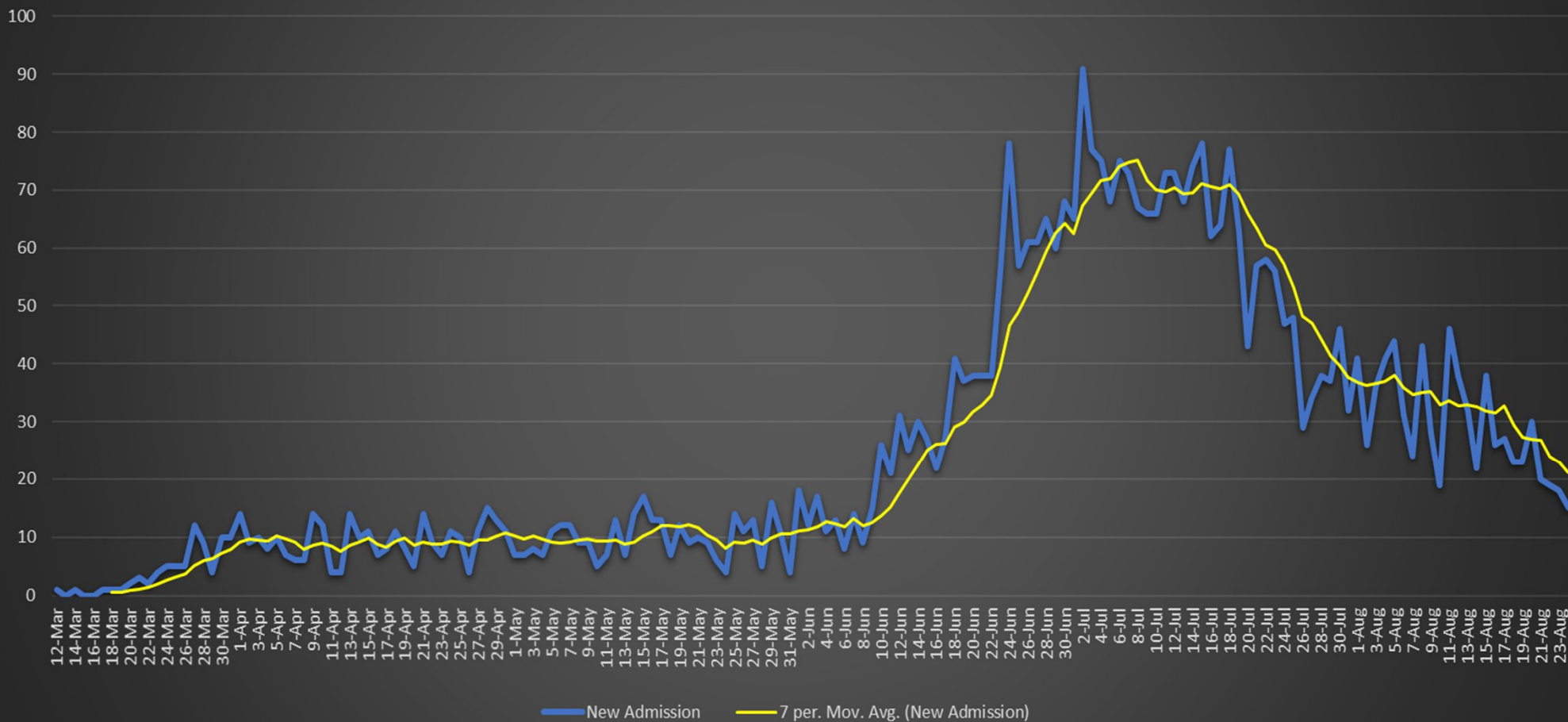
Austin Public Health

Mark Escott, MD, MPH, Interim Health Authority

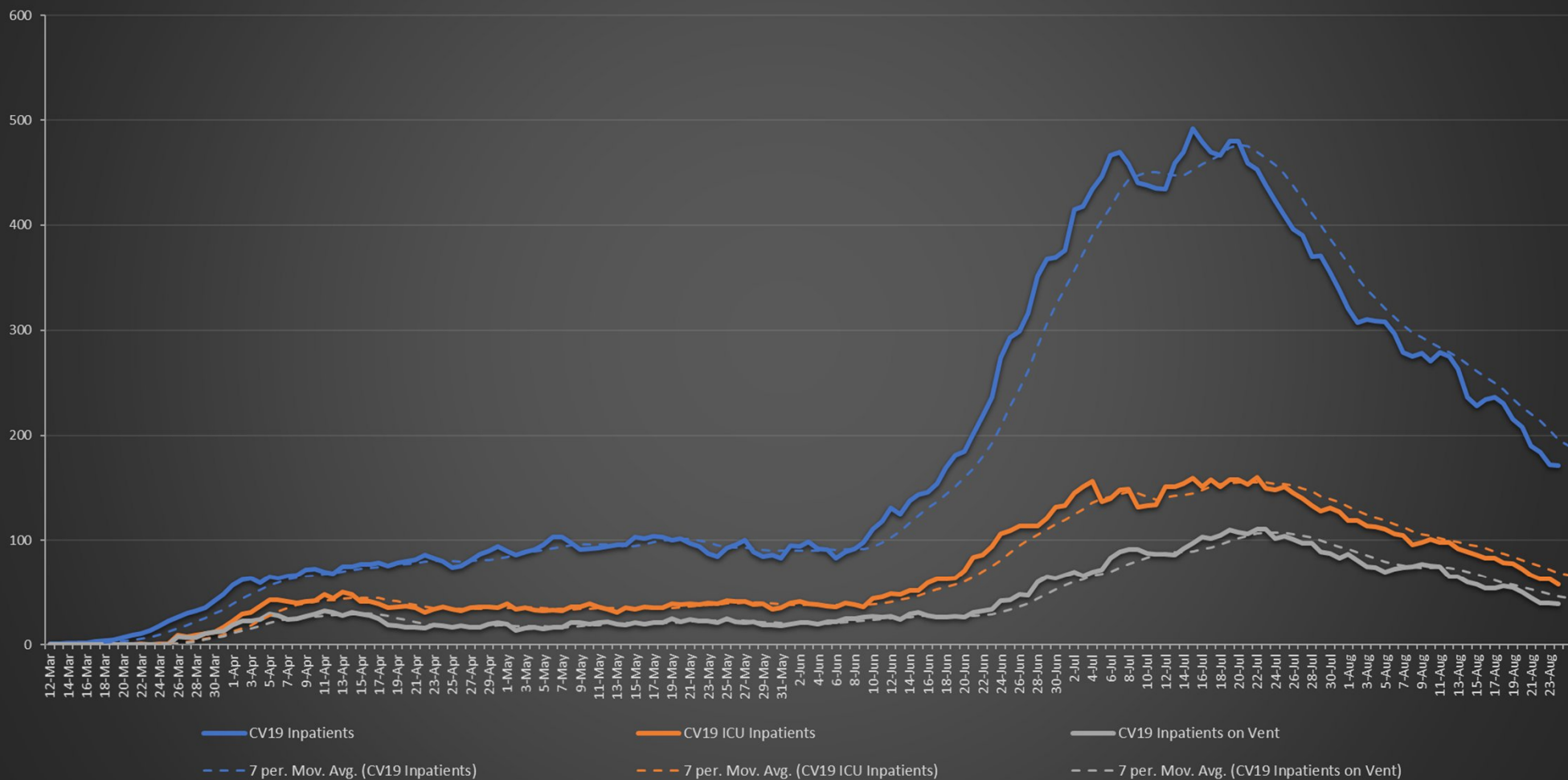
## COVID-19 Travis County New Confirmed Cases



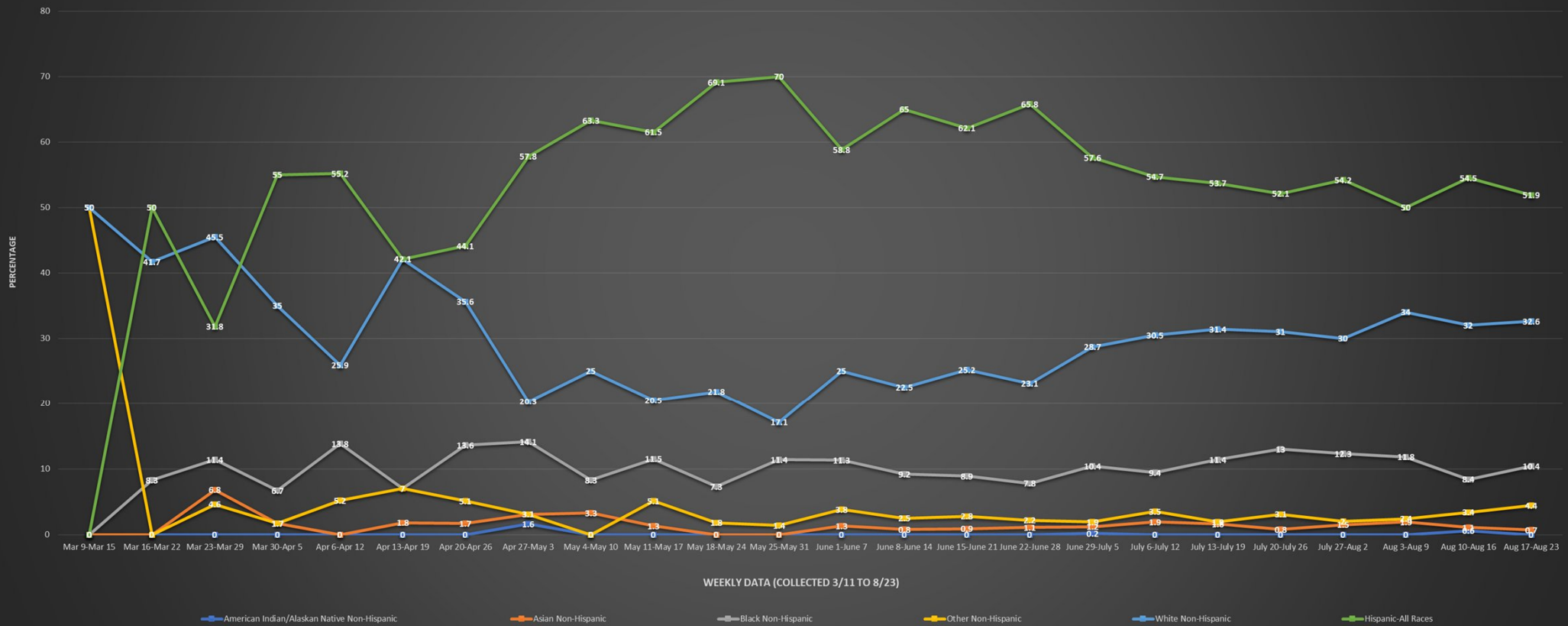
## COVID-19 Austin MSA New Admissions



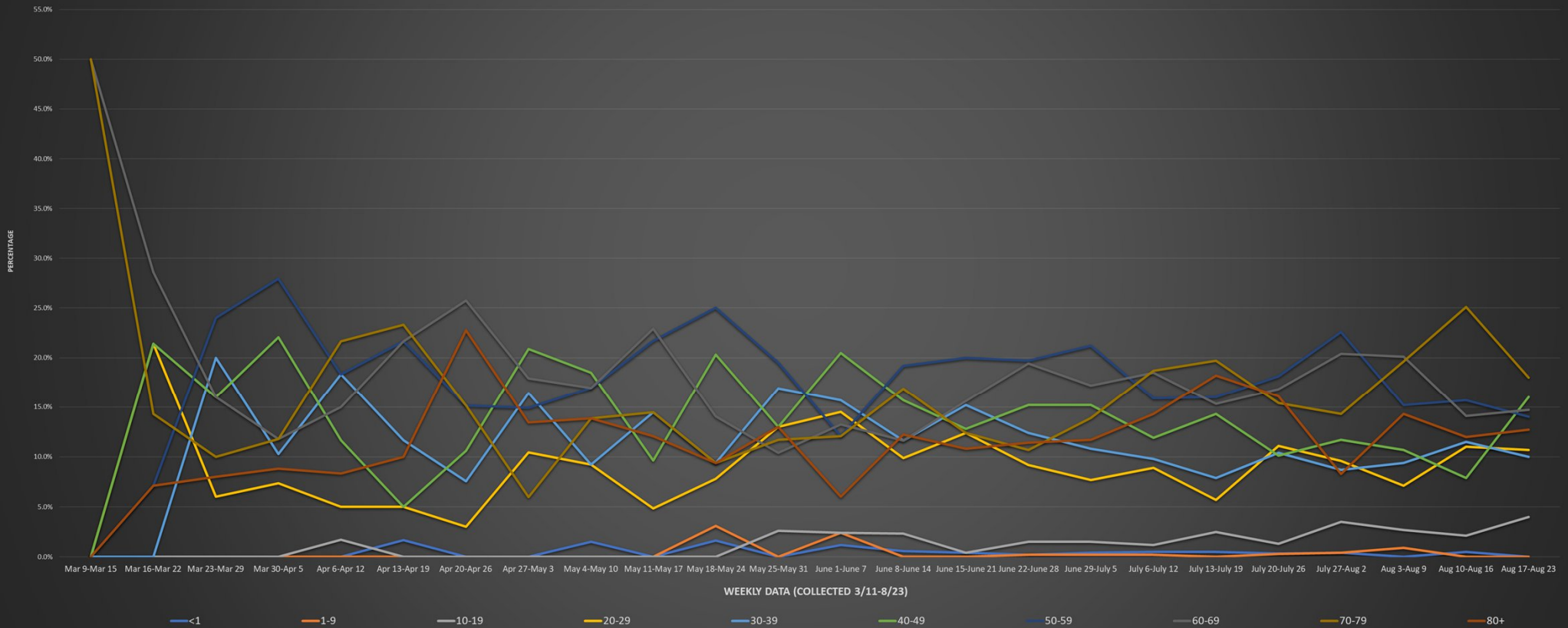
# COVID-19 AUSTIN MSA CURRENT HOSPITALIZATIONS, ICU ADMISSIONS, AND VENTILATOR USE



## City of Austin - Travis County COVID-19 Hospitalization by Race & Ethnicity (Austin MSA)

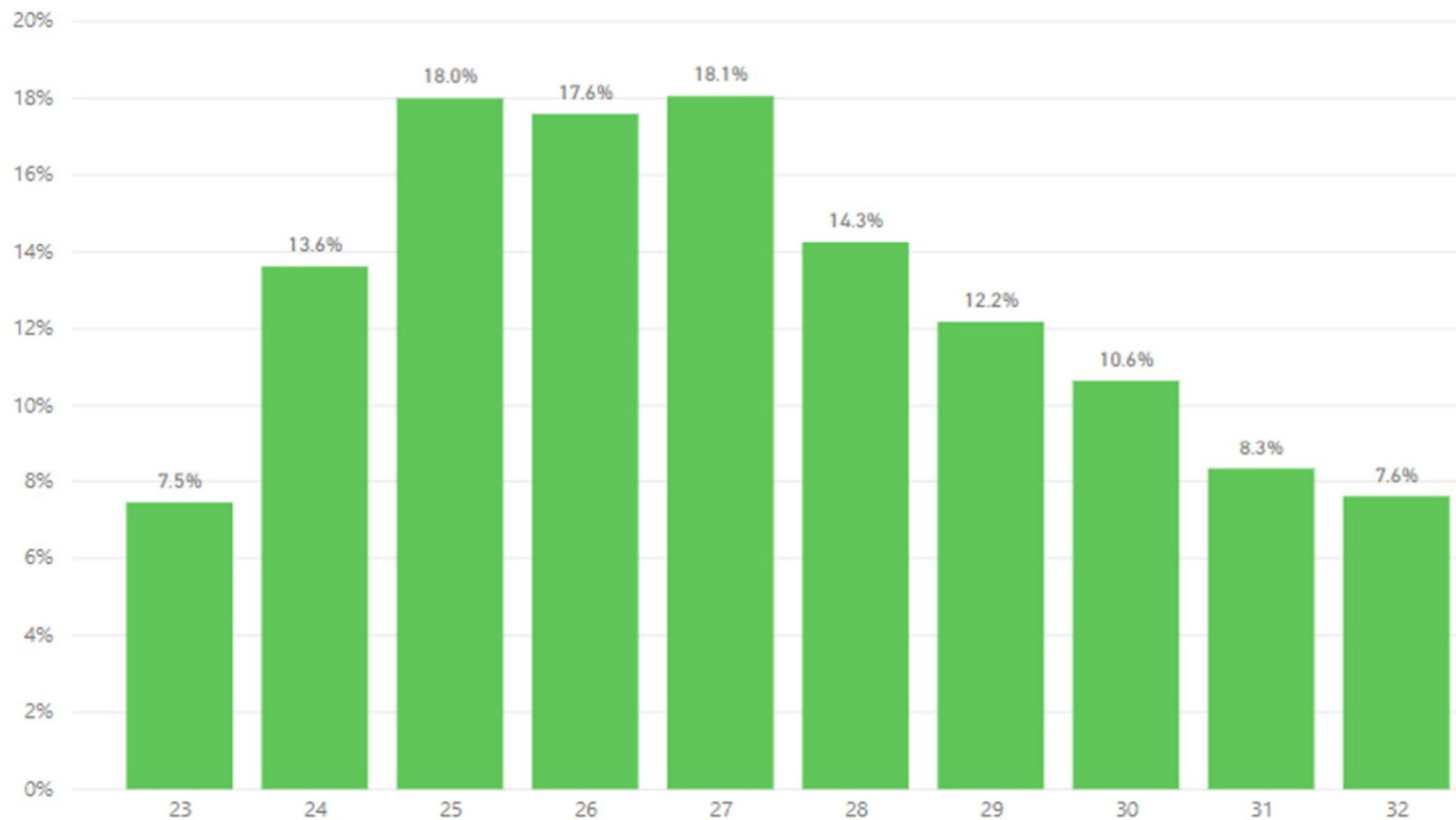


## City of Austin - Travis County COVID-19 Hospitalization by Age Group (Austin MSA)



Facility	Staff Positive	Staff Deaths	Residents Positive	Resident Deaths	Facility Total	Change
C	2	0	1	1	3	1
E	14	0	3	0	17	0
F	7	0	14	3	21	4
H	17	0	13	1	30	0
K	23	0	12	1	35	3
L	37	1	58	23	95	0
O	2	0	3	0	5	0
P	7	0	13	4	20	0
Q	23	0	45	10	68	14
R	9	0	19	3	28	0
S	4	0	3	1	7	0
T	7	0	1	0	8	1
U	4	0	0	0	4	0
V	18	0	1	0	19	1
W	3	0	5	0	8	0
X	18	0	2	3	20	0
AA	26	0	33	6	59	0
FF	1	0	8	1	9	0
GG	3	0	5	6	8	1
JJ	3	0	1	0	4	0
LL	13	0	37	10	50	5
NN	8	0	0	0	8	1
RR	40	0	88	11	128	1
UU	9	0	25	4	34	0
WW	1	0	1	0	2	0
YY	29	0	65	3	94	12
AAA	3	0	2	0	5	1
BBB	9	0	5	2	14	0
DDD	4	0	1	1	5	1
FFF	20	0	22	0	42	9
GGG	31	0	17	1	48	0
MMM	12	0	33	5	45	0
NNN	3	0	3	5	6	0
PPP	19	0	11	4	30	0
QQQ	1	0	9	0	10	0
RRR	5	0	11	2	16	0
SSS	3	0	4	0	7	2
TTT	9	0	5	1	14	0
VVV	1	0	0	0	1	0
WWW	1	0	2	0	3	1
TOTAL	449	1	581	112	1030	58

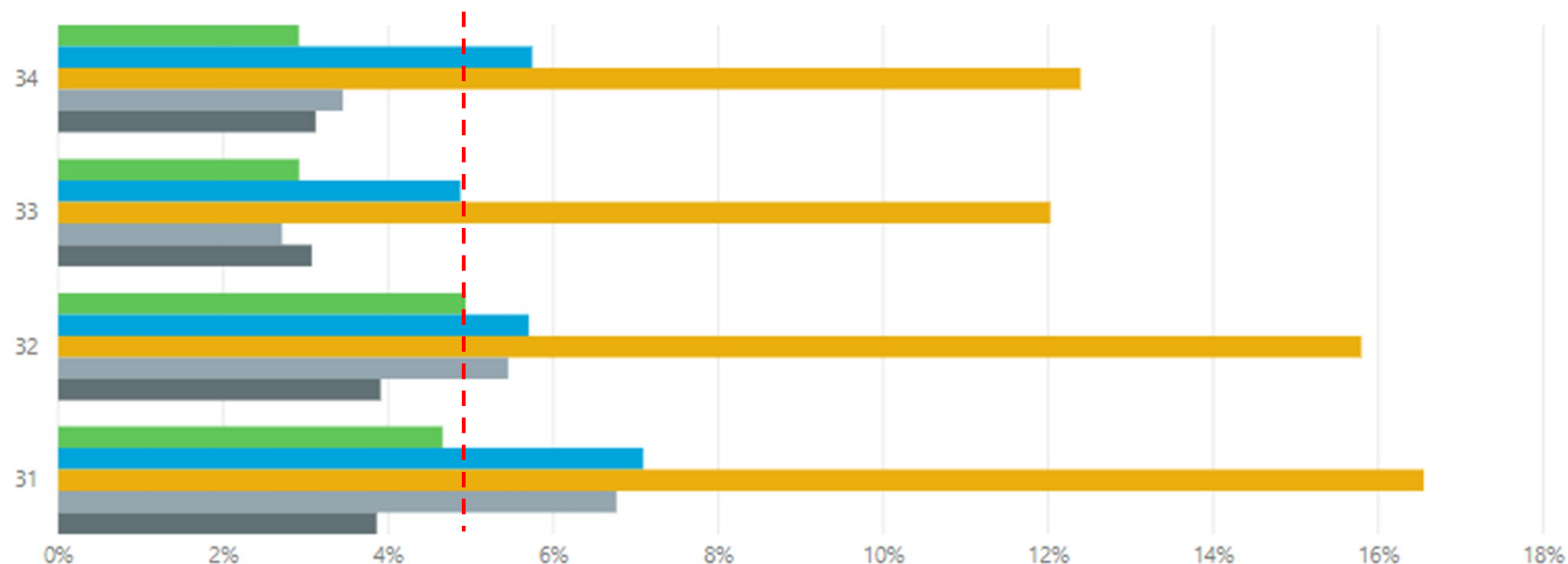
# Travis County COVID-19 Percent Positive by Week





# Percent Positive By Race/Ethnicity - Last Four Weeks

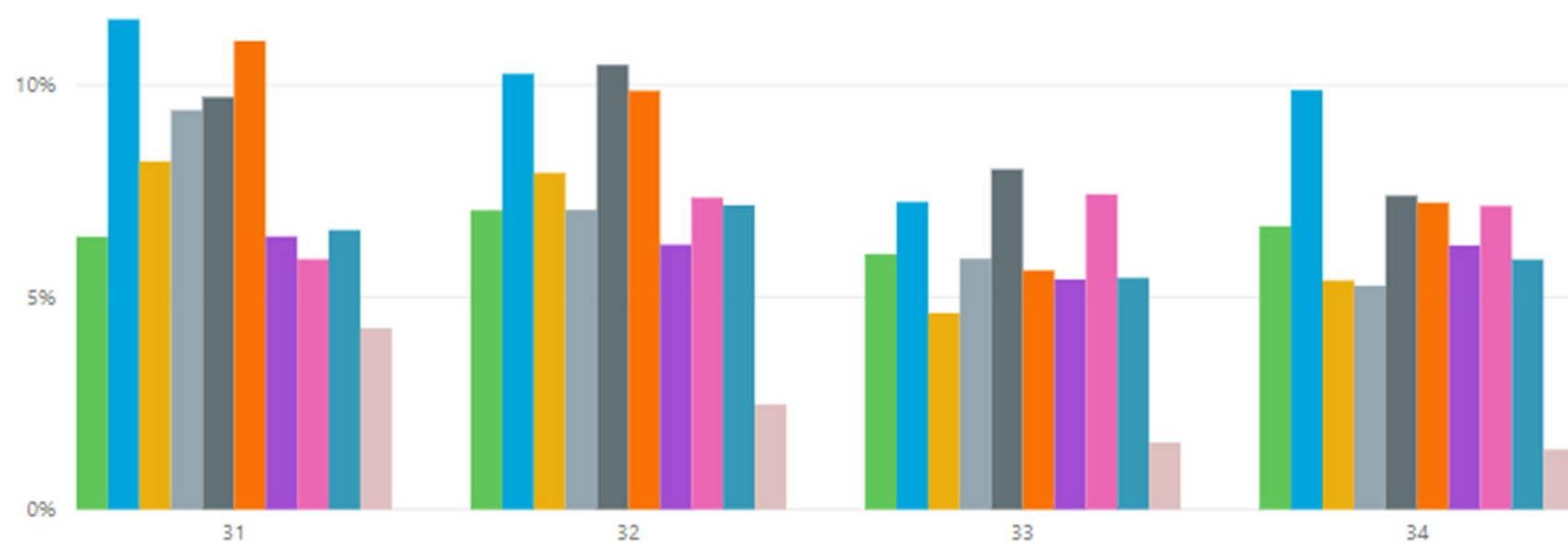
Race/Ethnicity ● Asian ● Black or African American ● Hispanic or Latino ● Other ● White

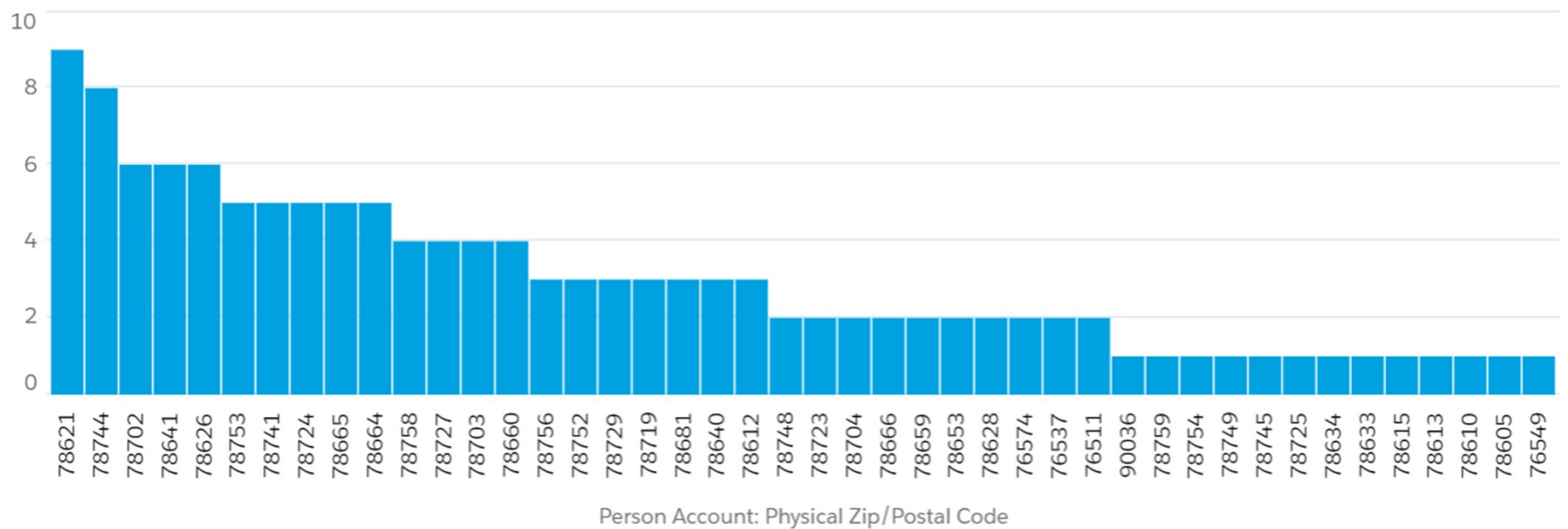


*Other includes American Indian or Alaskan Native, Native Hawaiian or Other Pacific Islander, Prefer not to answer and blank*

### Percent Positive By Age Group and Week - Last Four Weeks

Age Group at Collection ● 01-09 ● 10-19 ● 19-29 ● 30-39 ● 40-49 ● 50-59 ● 60-69 ● 70-79 ● 80+ ● Unknown





## COVID-19: Risk-Based Guidelines

Recommended thresholds 7-day average hospital admits		Practice Good Hygiene	Maintain Social Distancing	Wear Facial Coverings	Higher Risk Individuals Aged 65+, diabetes, high blood pressure, heart, lung and kidney disease, immunocompromised, obesity			Avoid Gatherings	Avoid Non-Essential Travel	Avoid Dining/ Shopping	Workplaces Open
		Stay Home If Sick Avoid Sick People			Avoid Gatherings	Avoid Non-Essential Travel	Avoid Dining/ Shopping				
0	Stage 1	•			Greater than 25		Except with precautions	Gathering size TBD			All businesses
< 10	Stage 2	•	•	•	Greater than 10		Except as essential	Greater than 25			Essential and reopened businesses
10 - 39	Stage 3	•	•	•	Social and greater than 10	•	Except as essential	Social and greater than 10			Essential and reopened businesses
40 - (70 to 123)*	Stage 4	•	•	•	Social and greater than 2	•	Except as essential	Social and Greater than 10	•	Except expanded essential businesses	Expanded essential businesses
> (70 - 123)* (depending on rate of increase)	Stage 5	•	•	•	Outside of household	•	Except as essential	Outside of household	•	Except as essential	Essential businesses only

\* The exact hospitalization average trigger will depend on the rate of increase. A faster increase in the daily average will trigger stage 5 risk recommendations when the number reaches the lower end of this range.

Use this color-coded alert system to understand the stages of risk. This chart provides recommendations on what people should do to stay safe during the pandemic. Individual risk categories identified pertain to known risks of complication and death from COVID-19. This chart is subject to change as the situation evolves.



# FACT vs. FICTION: MASKS

- Face masks can cause pneumonia: **FICTION**
  - **FACT:** There is no clinical evidence that supports this conclusion. Hospital staff regularly wear masks as do other professions for extended periods of time with no evidence of detrimental effect
- Face masks cause toxic levels of Carbon Dioxide: **FICTION**
  - **FACT:** There is no clinical evidence that supports this conclusion. Individuals who are new to wearing masks may become anxious, but in most individuals, this anxiety resolves with repetition.

# FACT vs. FICTION: Suicide

- More people have died from suicide during the COVID-19 pandemic than from COVID-19 itself: **FICTION**
  - **FACT:** COVID-19 has become the third leading cause of death in the United States and is the fourth leading cause of death in Travis County as compared to our county vital records from 2018, surpassing Strokes and Cerebrovascular Disease
  - There is no evidence that supports this assertion in Travis County and at this stage, suicides appear to be decreased in the first six months of 2020 as compared to 2019

# FACT vs. FICTION: Seasonal Influenza

- Seasonal Influenza is more dangerous than COVID-19: **FICTION**
  - FACT: 176,223 Americans and 11,773 Texans have died from COVID-19 so far with a vaccine months away
  - CDC estimates that 24,000-64,000 Americans died during the 2019-2020 influenza season
  - CDC estimates that 3,516 Texans died during the 2019-2020 influenza season