

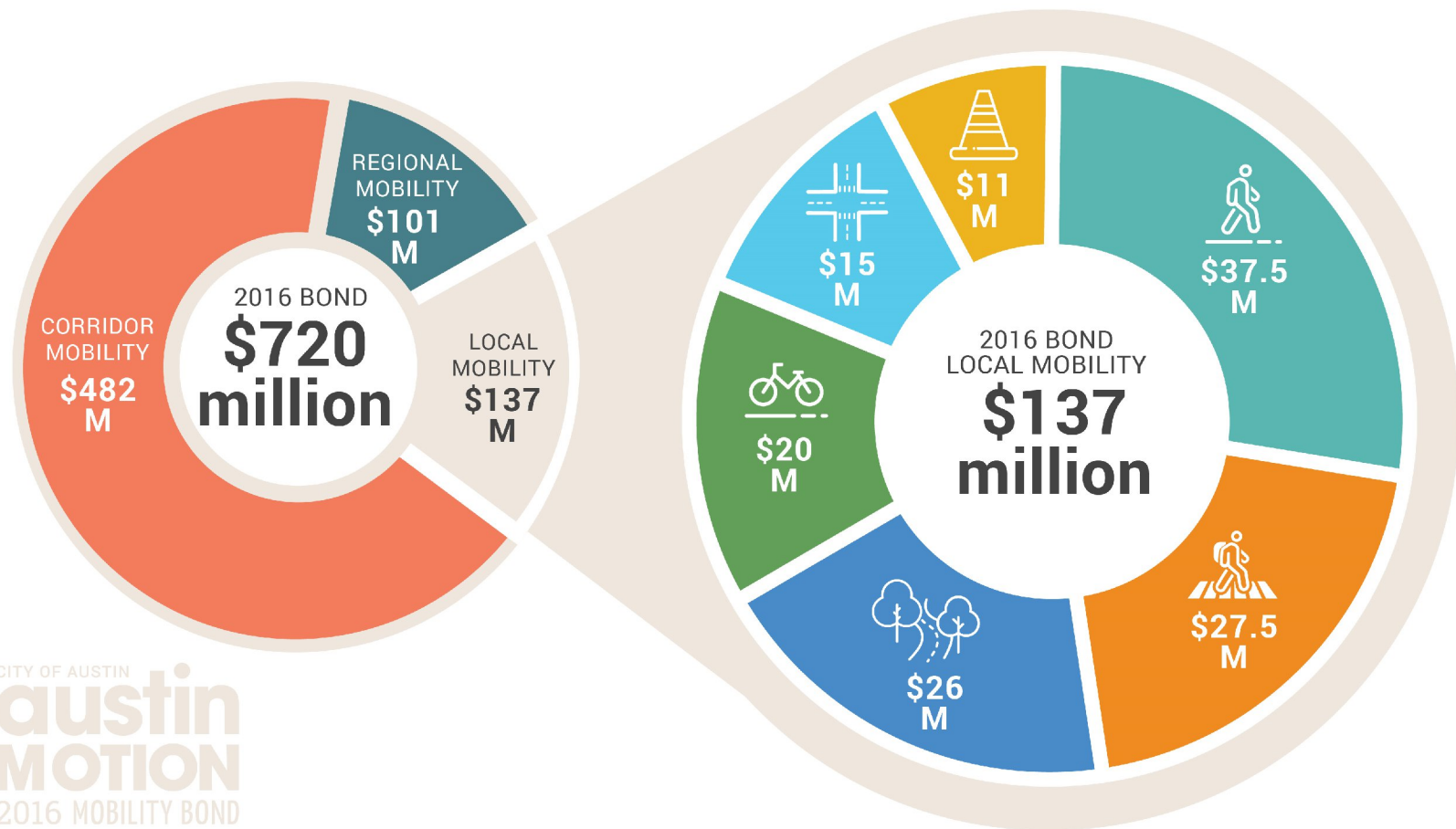
2021 MOBILITY ANNUAL PLAN

Council Mobility Committee Briefing



THURSDAY, JANUARY 21 2021

2016 MOBILITY BOND [BOND FUNDING BREAKDOWN]



CITY OF AUSTIN
austin
MOTION
2016 MOBILITY BOND

\$37.5 M

sidewalks

\$27.5 M

safe routes
to school

\$26 M

urban trails

\$20 M

bikeways

\$15 M

intersection safety/
vision zero

\$11 M

substandard streets/
capital renewal

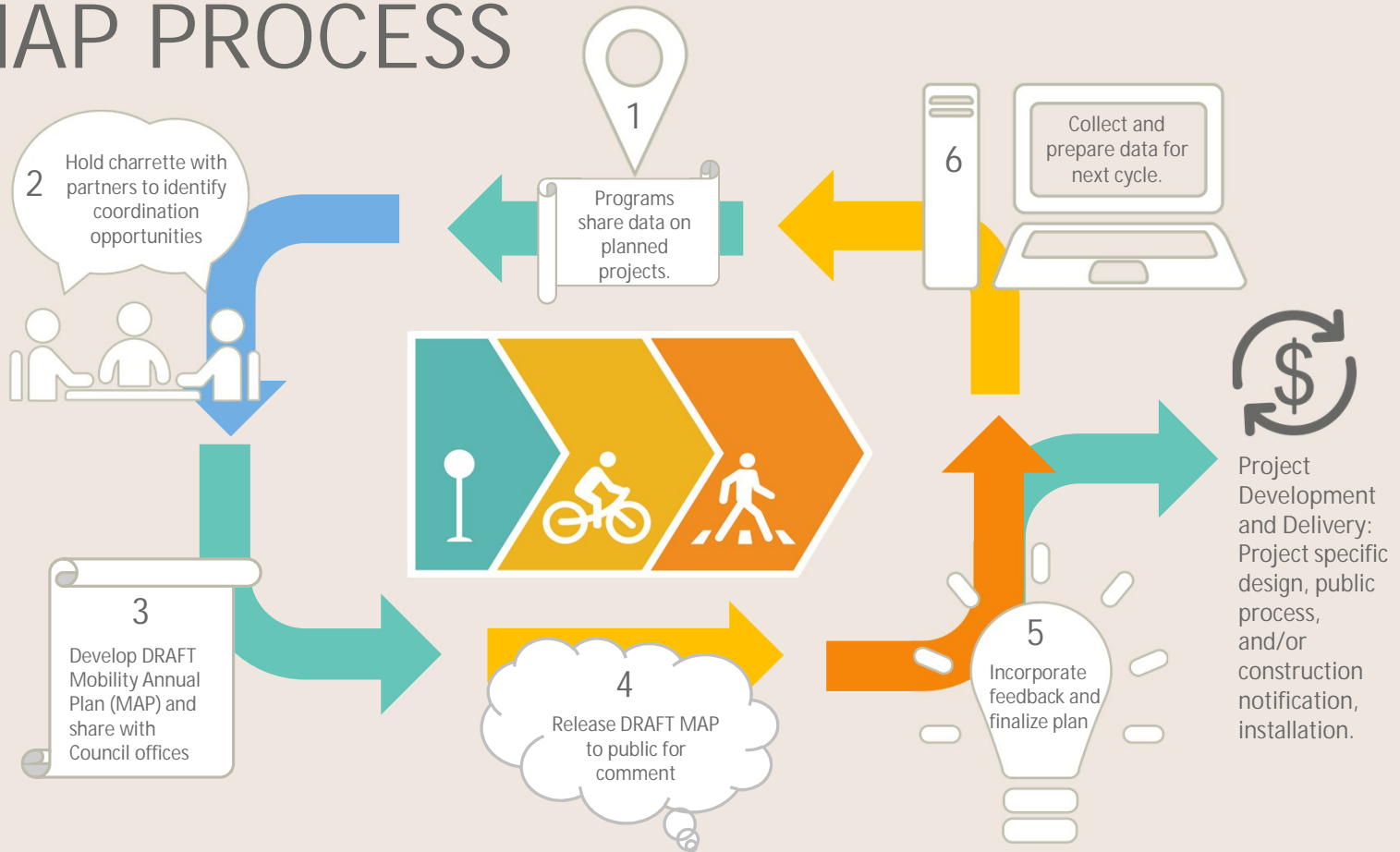


ABOUT THE MOBILITY ANNUAL PLAN

- An annual coordination process among programs of the 2016 Mobility Bond;
- Designed to identify projects for further development in the year ahead;
- Repeated annually to maintain flexibility, with transparency, accountability and responsiveness to the community.

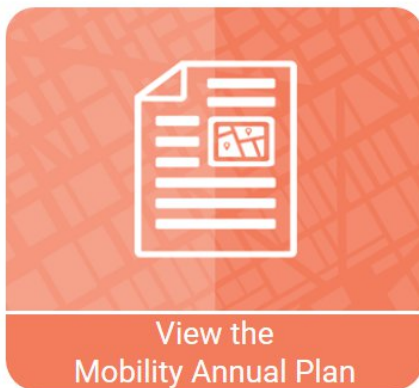


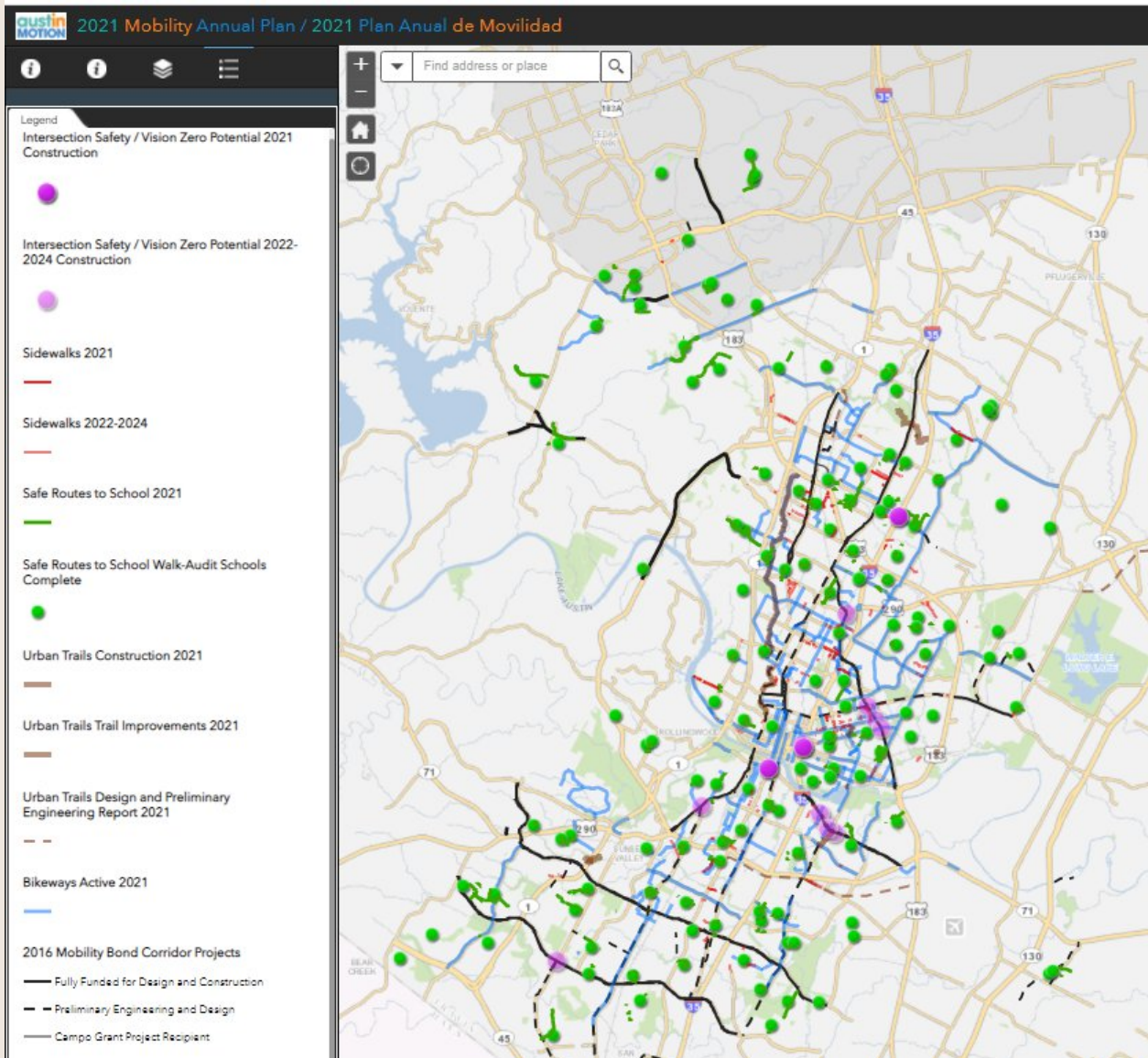
MAP PROCESS





AUSTINTEXAS.GOV/MOBILITYANNUALPLAN

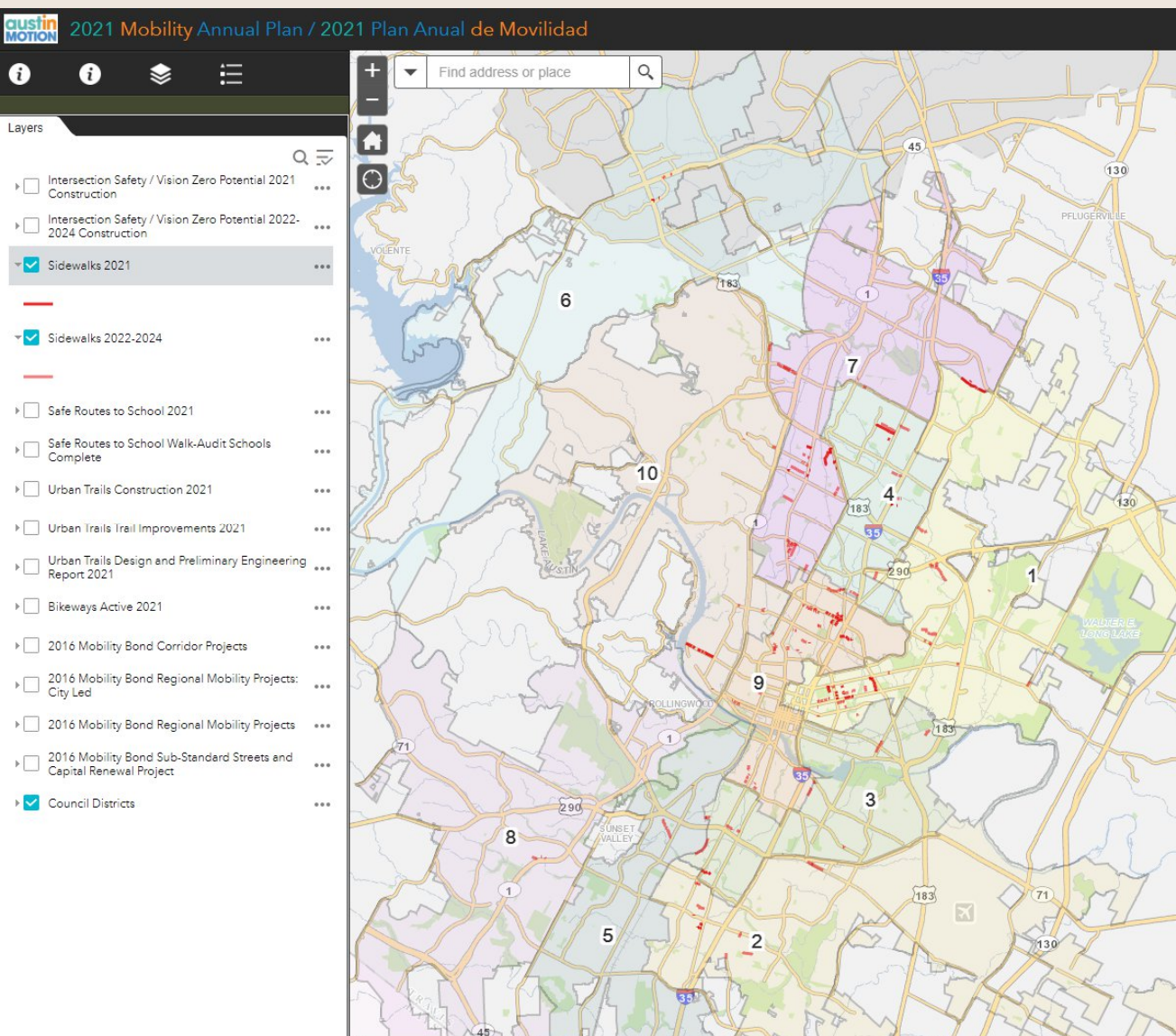




austin
MOTION
2016 MOBILITY BOND



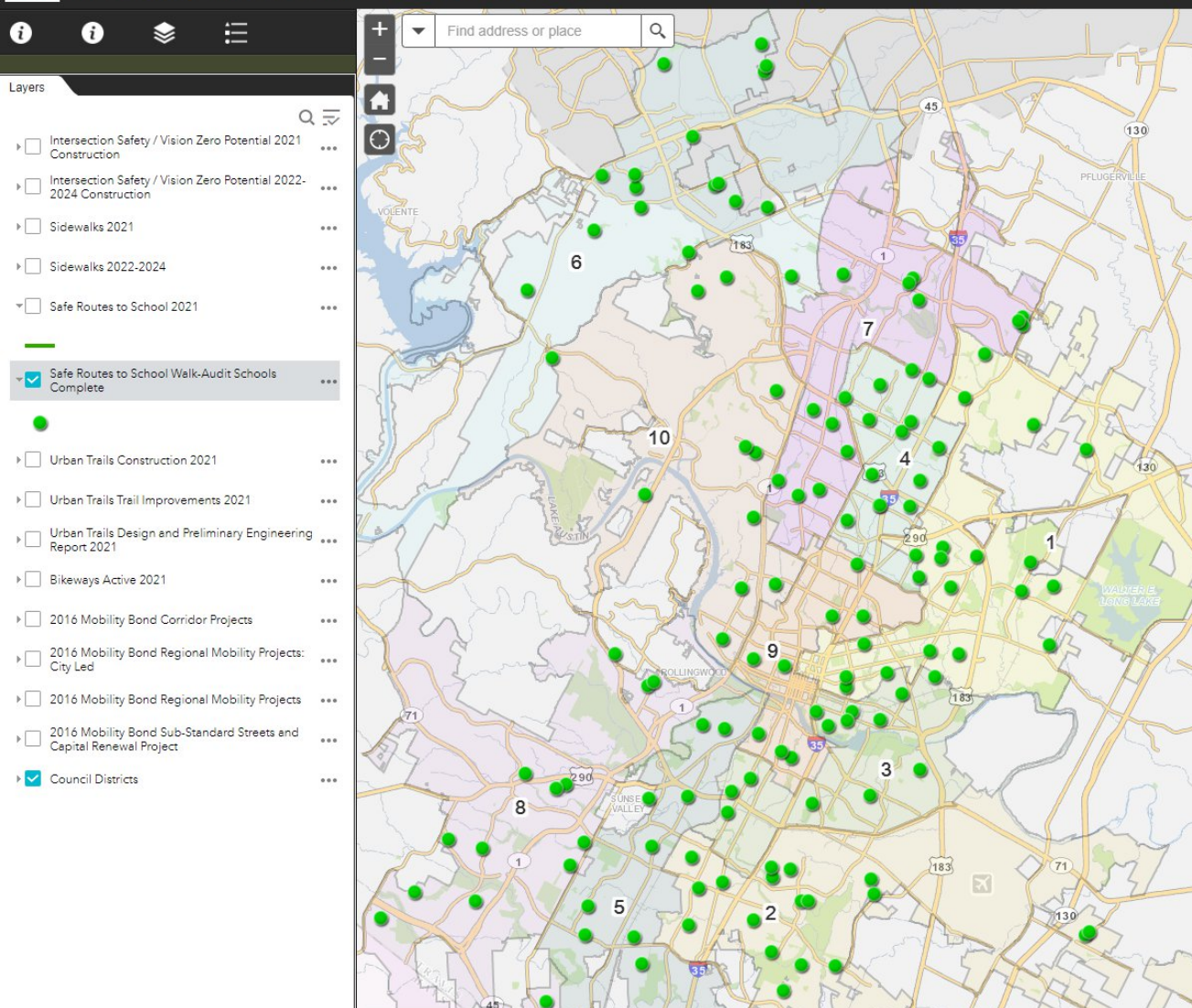
INTERACTIVE MAP



austin MOTION
2016 MOBILITY BOND



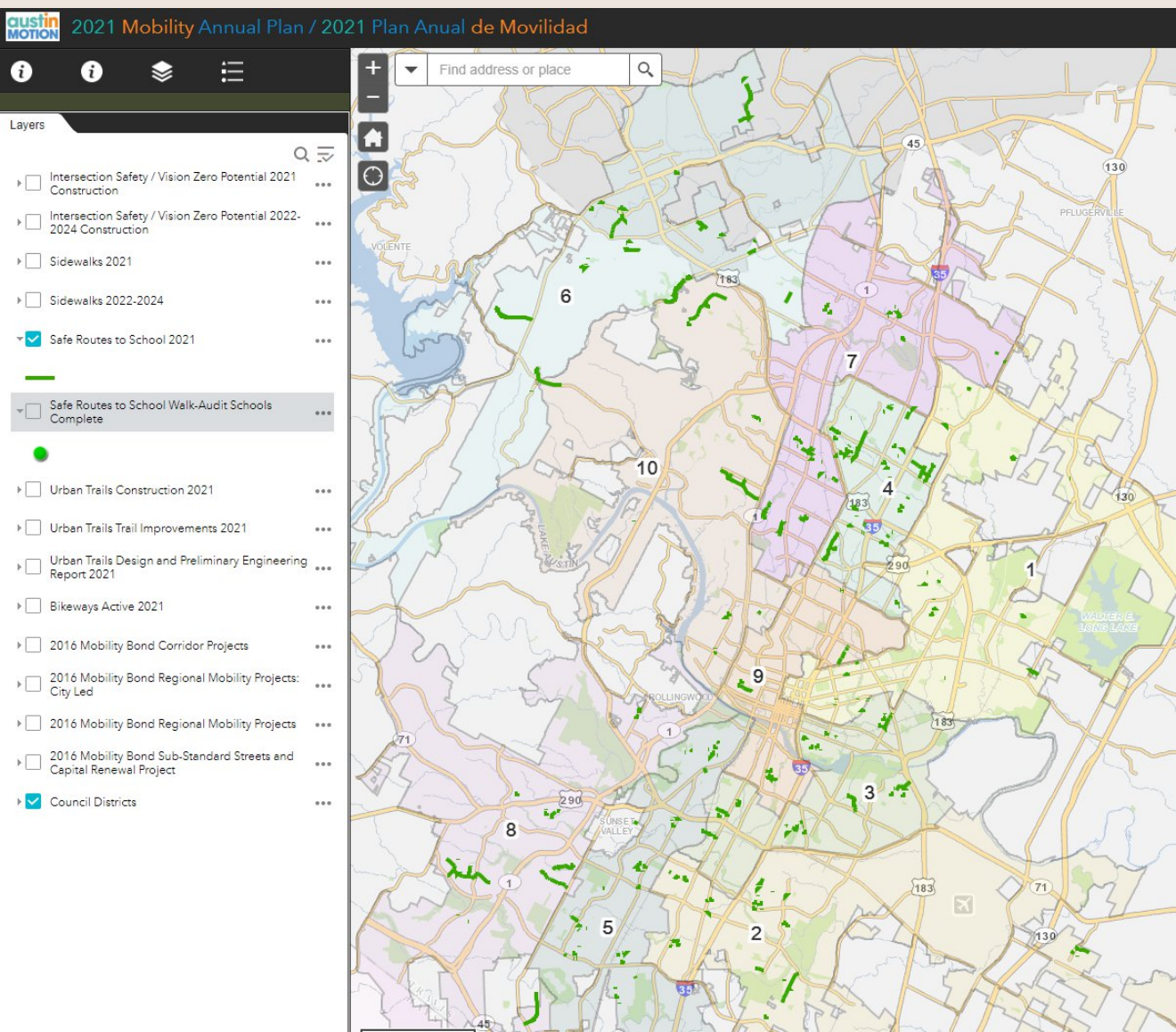
SIDEWALKS



austin
MOTION
2016 MOBILITY BOND



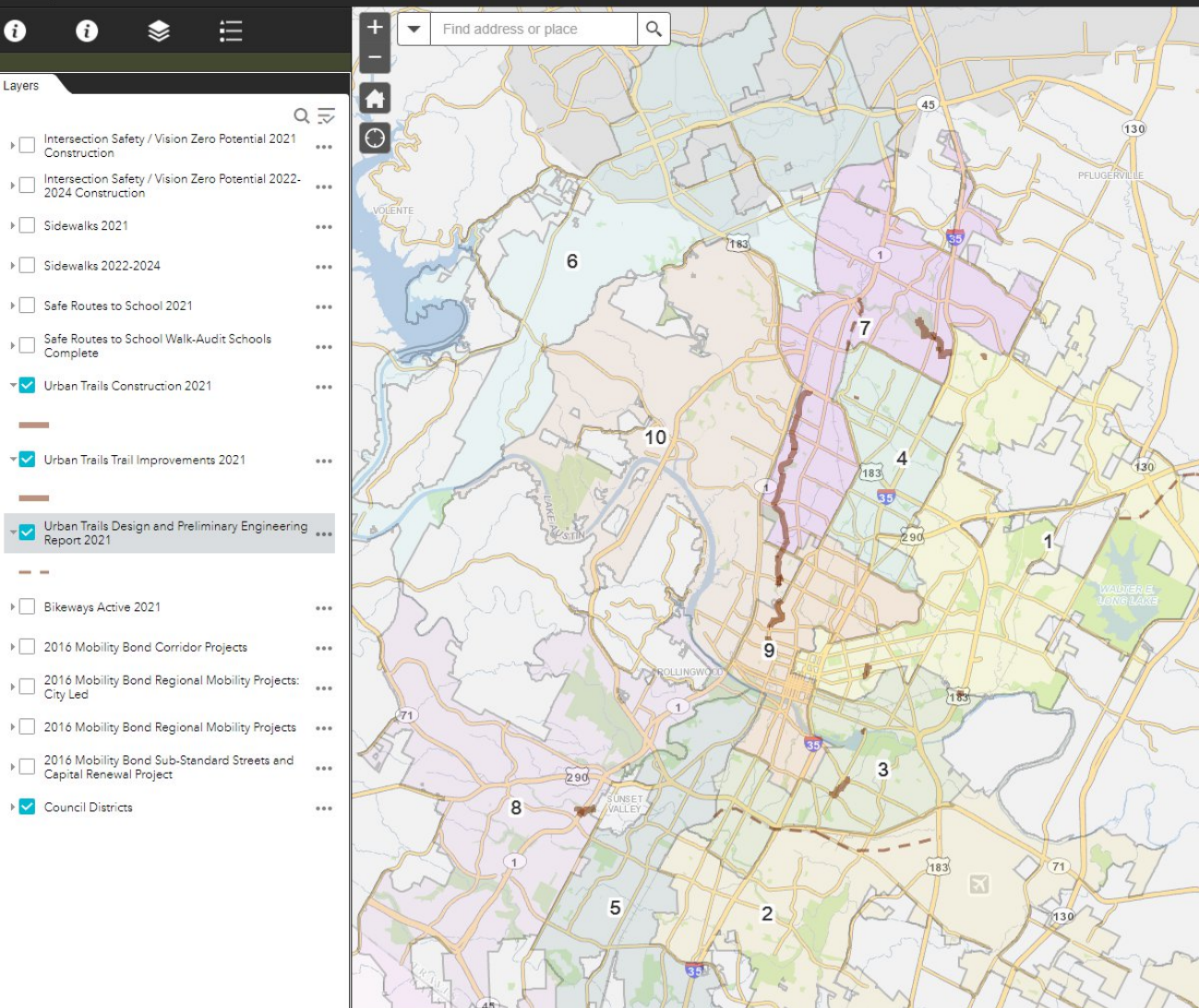
SAFE ROUTES
TO SCHOOL



austin MOTION
2016 MOBILITY BOND



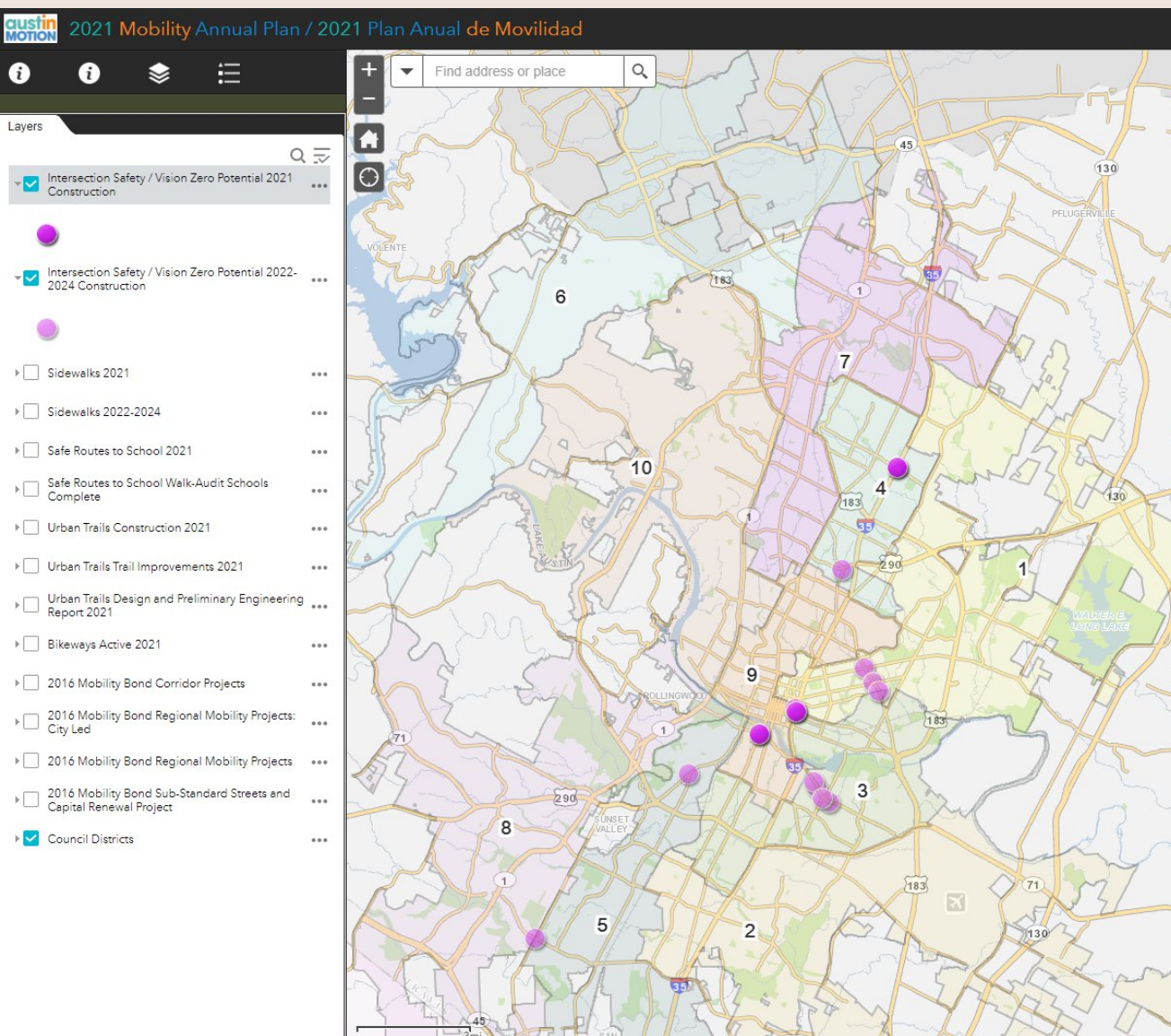
SAFE ROUTES TO SCHOOL



austin
MOTION
2016 MOBILITY BOND



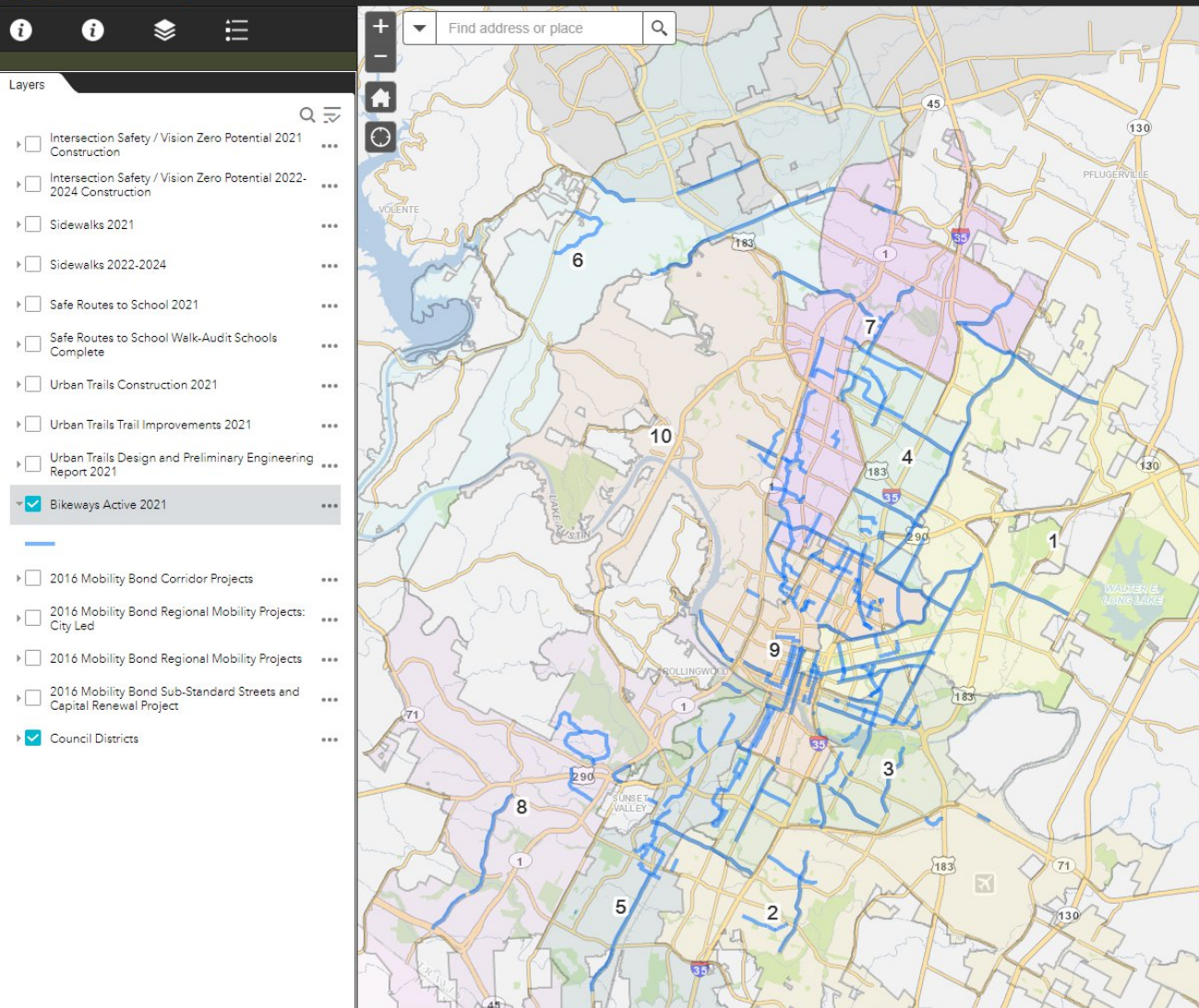
URBAN TRAILS



austin MOTION
2016 MOBILITY BOND



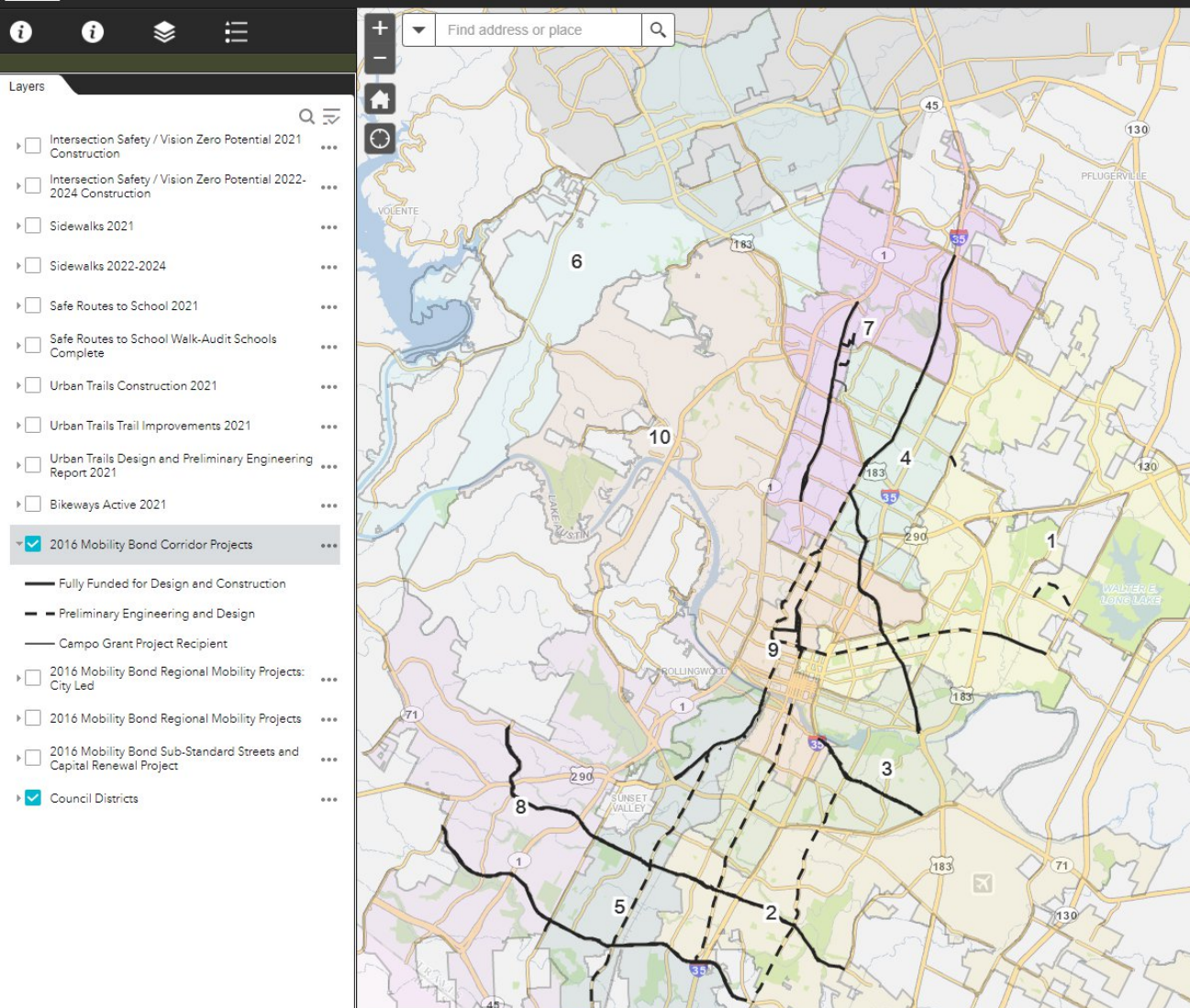
INTERSECTION SAFETY/ VISION ZERO



austin
MOTION
2016 MOBILITY BOND



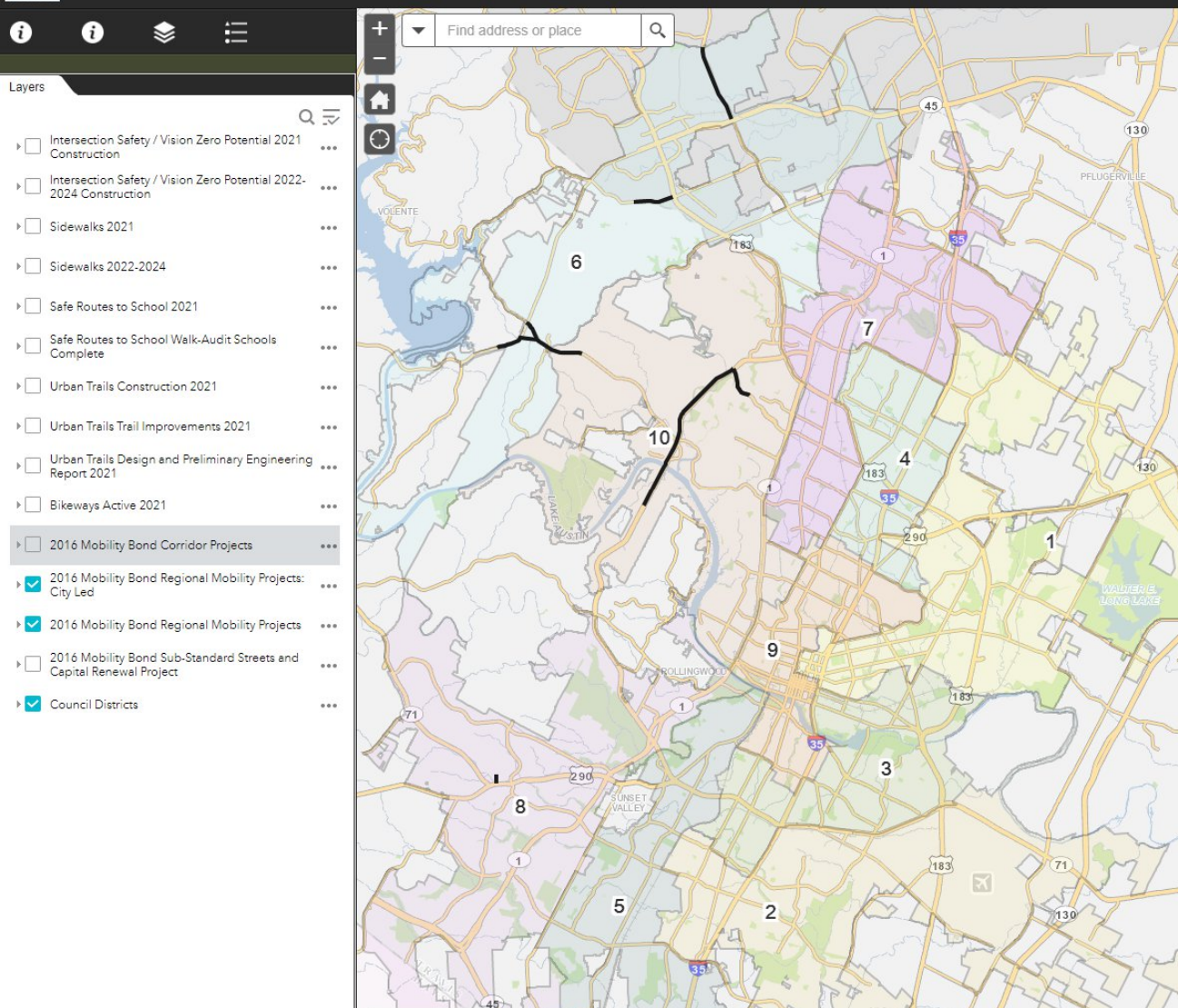
BIKEWAYS



austin
MOTION
2016 MOBILITY BOND



CORRIDOR PROGRAM



austin
MOTION
2016 MOBILITY BOND



REGIONAL MOBILITY



CAPITAL PROJECT EXPLORER

capitalprojects.austintexas.gov

Home
All Projects

PROJECT TYPE

- Select All
- Area Master Plans
- Electric
- Facilities
- Housing
- Mobility
- Park Amenities
- Purchases
- Water
- Other

COUNCIL DISTRICT

PROJECT STAGE

Welcome to the City of Austin Capital Projects Explorer

Use this interactive tool to find information about capital projects and programs that matter to you.

Project Filters and the Map are available to help you navigate through the many and diverse projects that make up the City of Austin's Capital Improvement Program (CIP). Depending on your screen size, Project Filters and the Map are located either on the left-hand side or right-hand sides of your screen, respectively, or, on smaller screens, along the bottom of the screen by selecting Filter or Map.

This site has information for all current projects funded by the Capital Budget, with the exception of projects funded by Austin Energy. The Map, however, shows only those projects that are in construction or that will be in construction within the next 6 months. A capital project is considered current if it is in one of the following project stages: Anticipated, Active, Construction, or Closeout. Definitions for these terms can be found on the Capital Projects Explorer FAQ page.

What is a capital project or program?

How can I find projects in my neighborhood?

Leander Cedar Park Round Rock Pflugerville Manor Lakeway

austintexas.gov Search Projects

THANK YOU

