

---

# COVID-19 Update

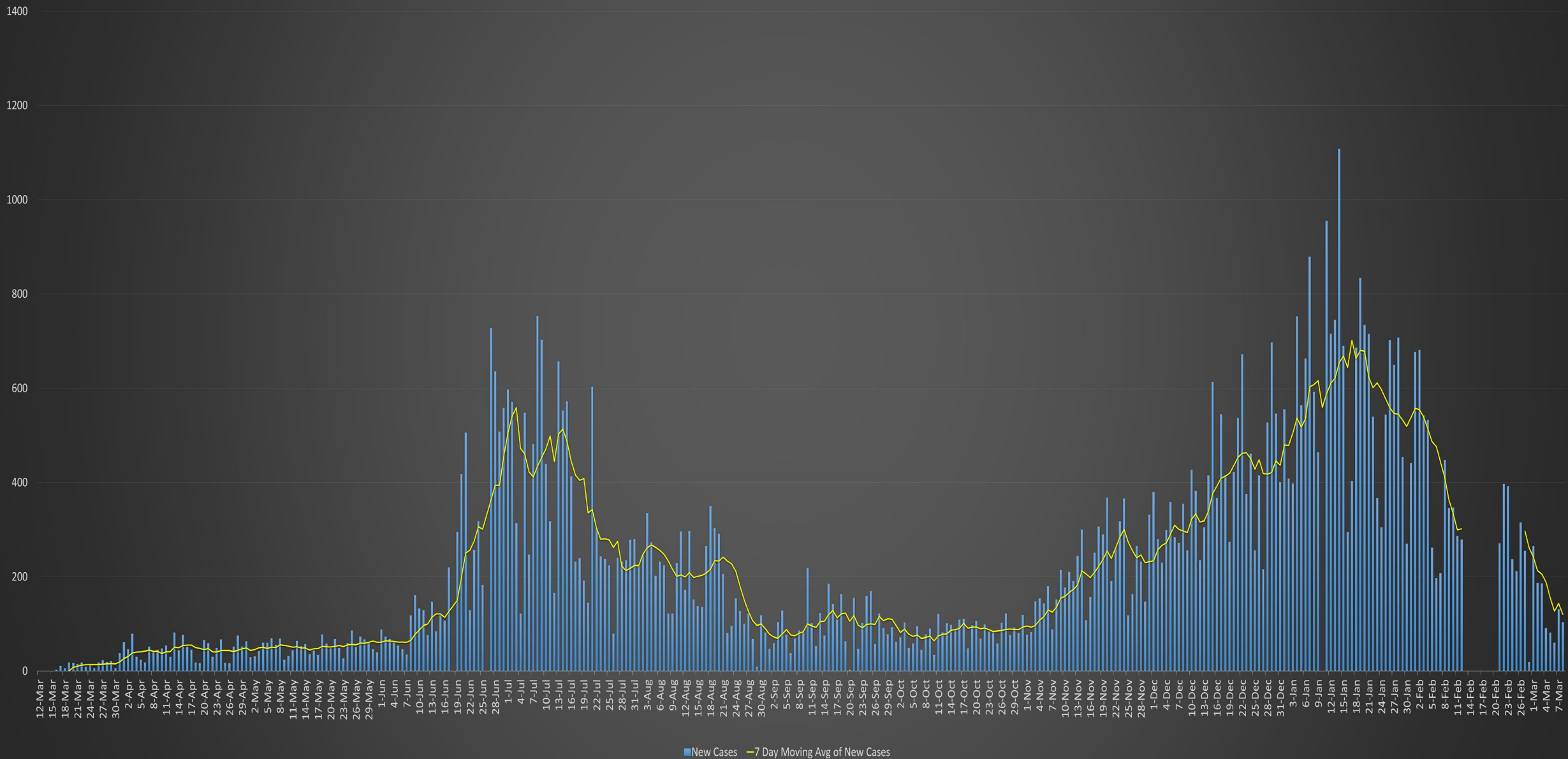
March 9, 2021

Austin Public Health

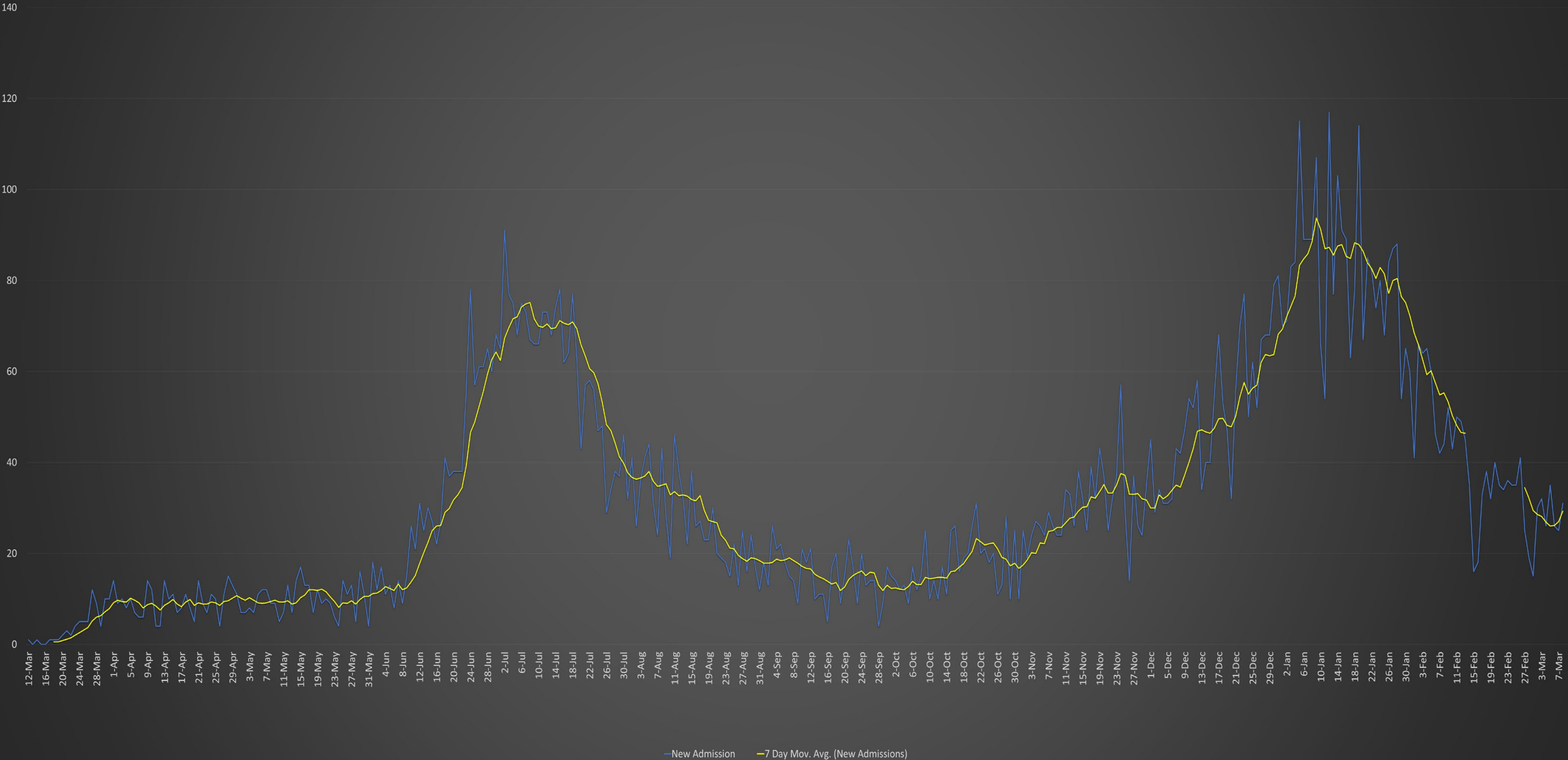
Mark Escott, MD, MPH, Interim Health Authority

Chief Medical Officer

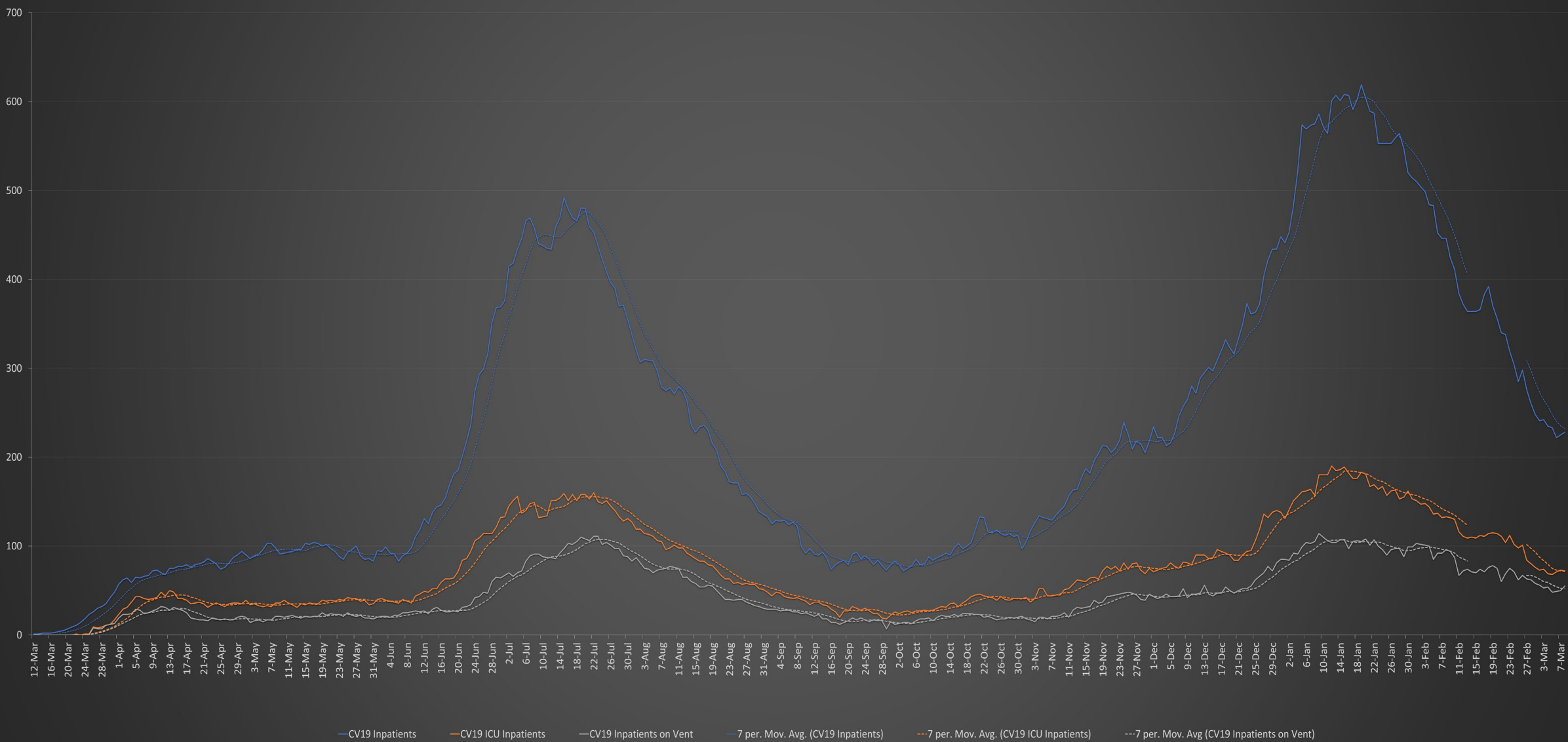
# COVID-19 Travis County New Confirmed Cases



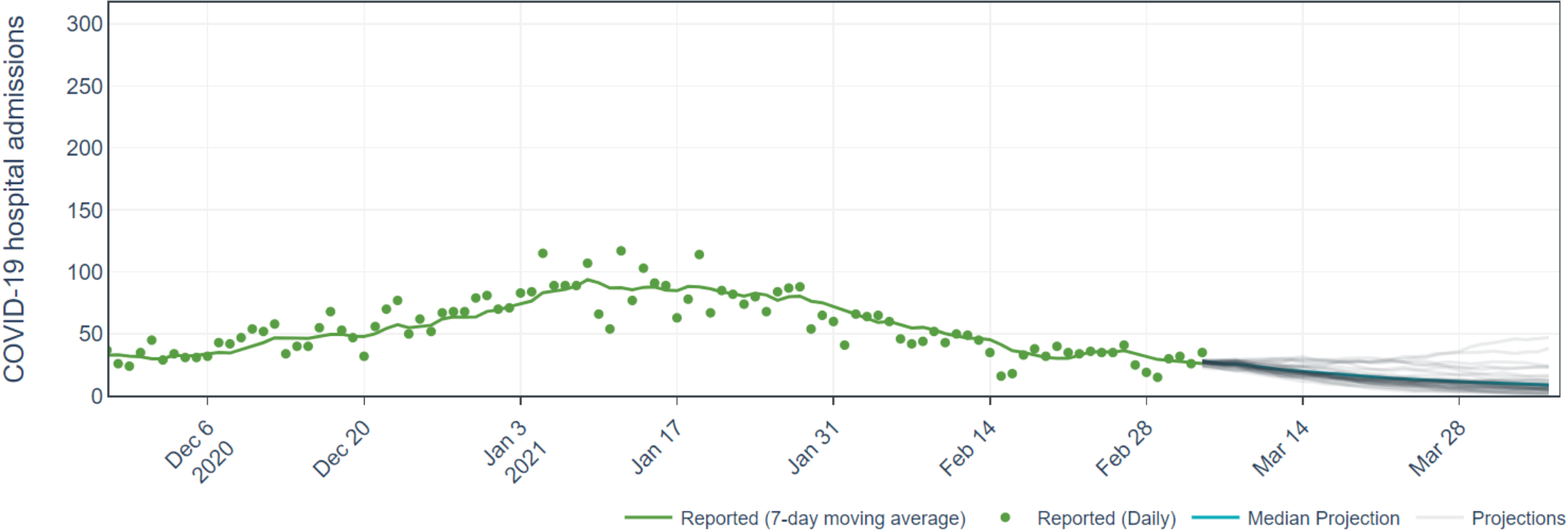
# COVID-19 Austin MSA New Admissions



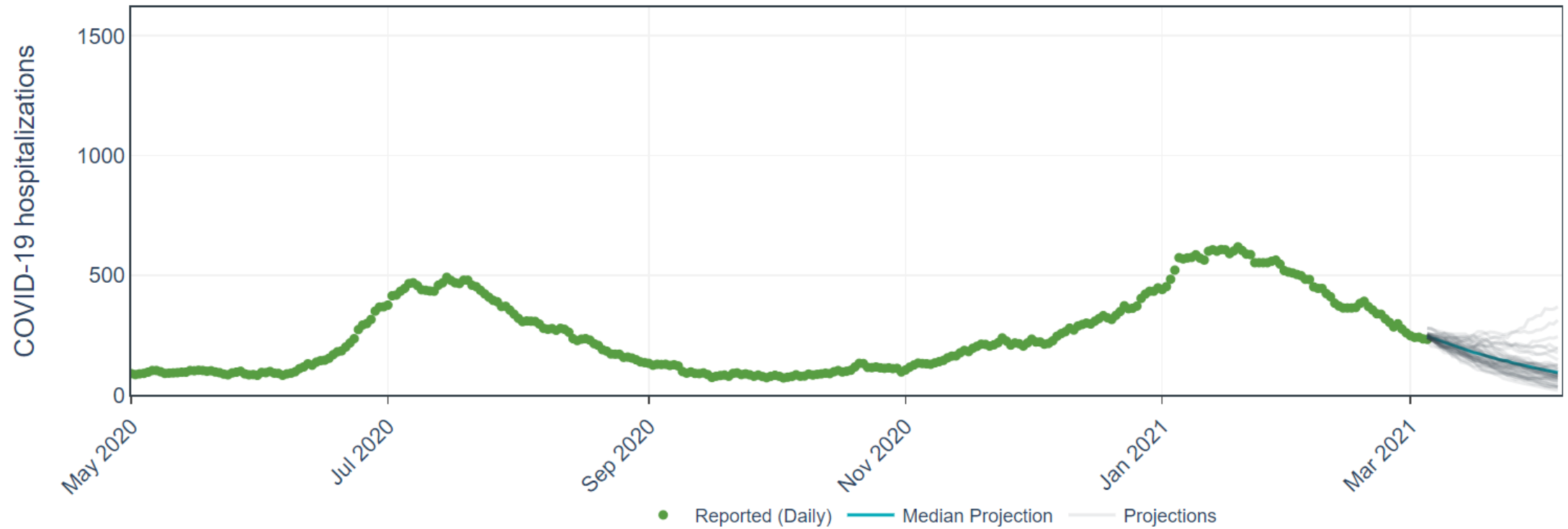
COVID-19 AUSTIN MSA CURRENT HOSPITALIZATIONS, ICU ADMISSIONS, AND VENTILATOR USE



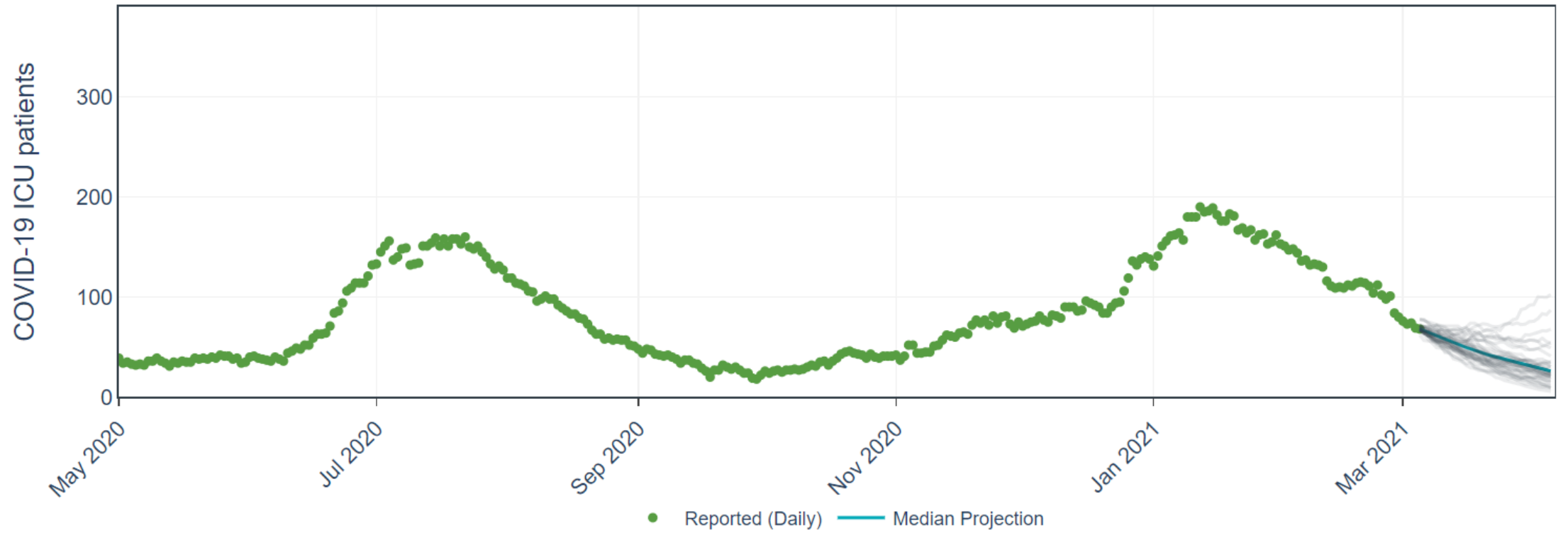
Daily COVID-19 Hospital Admissions in the Austin-Round Rock MSA (7 day moving average)



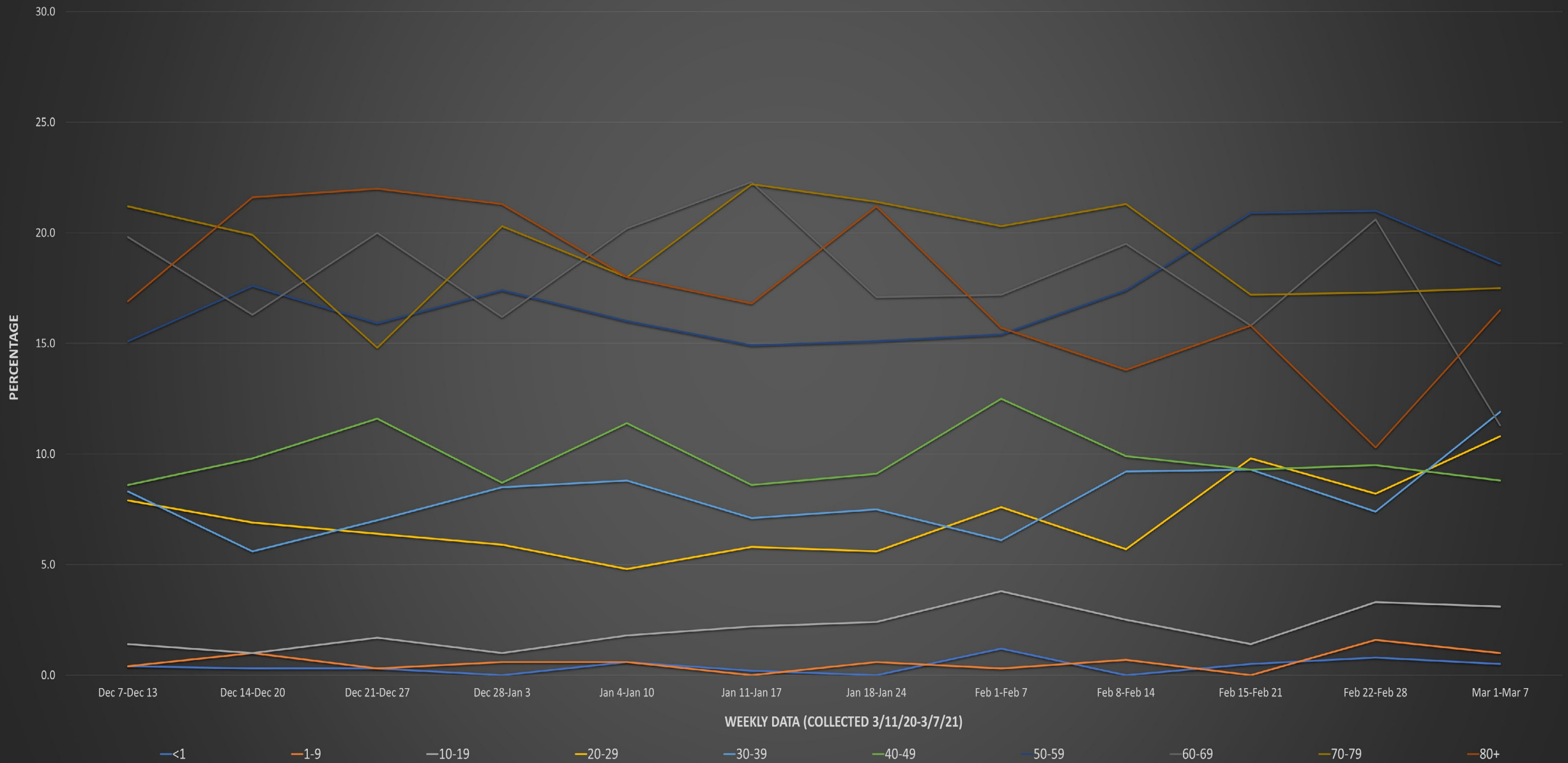
Daily COVID-19 Hospitalizations in the Austin-Round Rock MSA



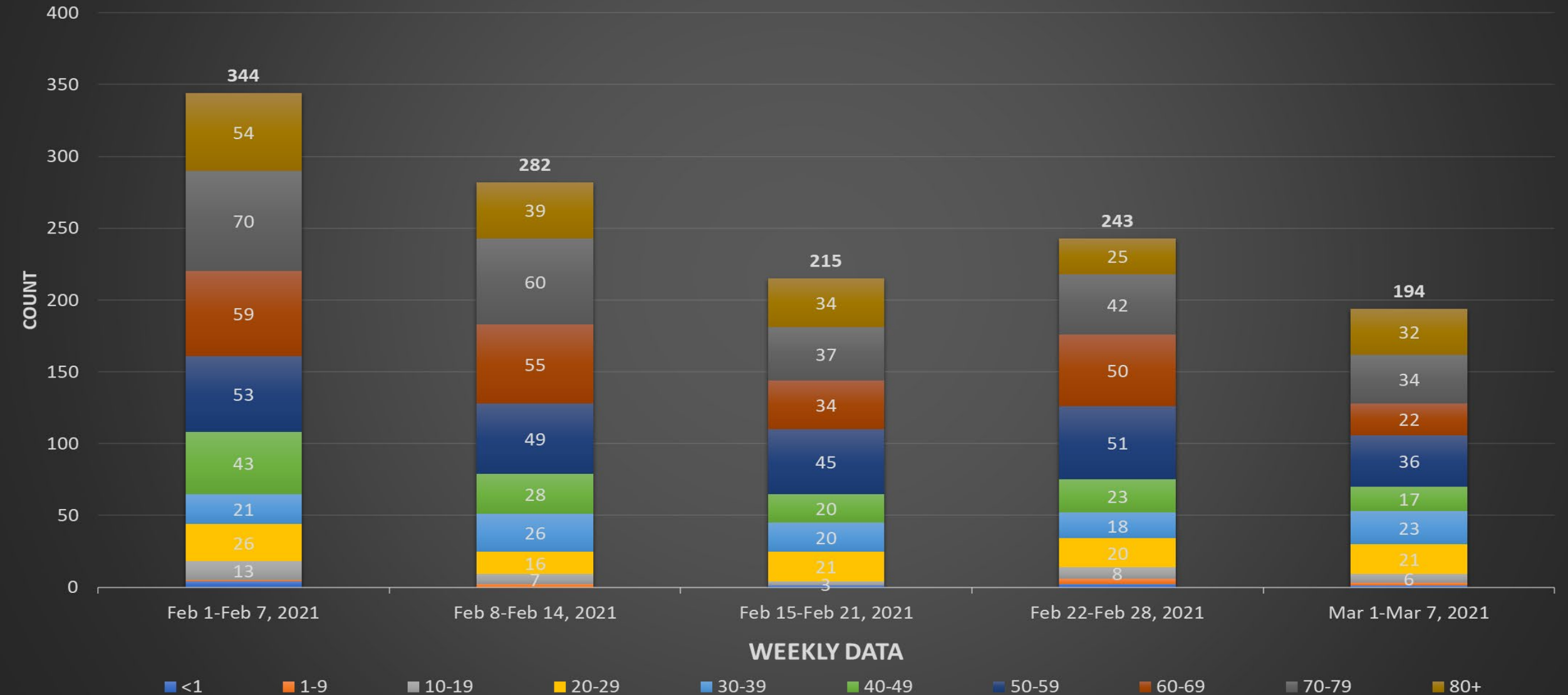
Daily COVID-19 ICU patients in the Austin-Round Rock MSA



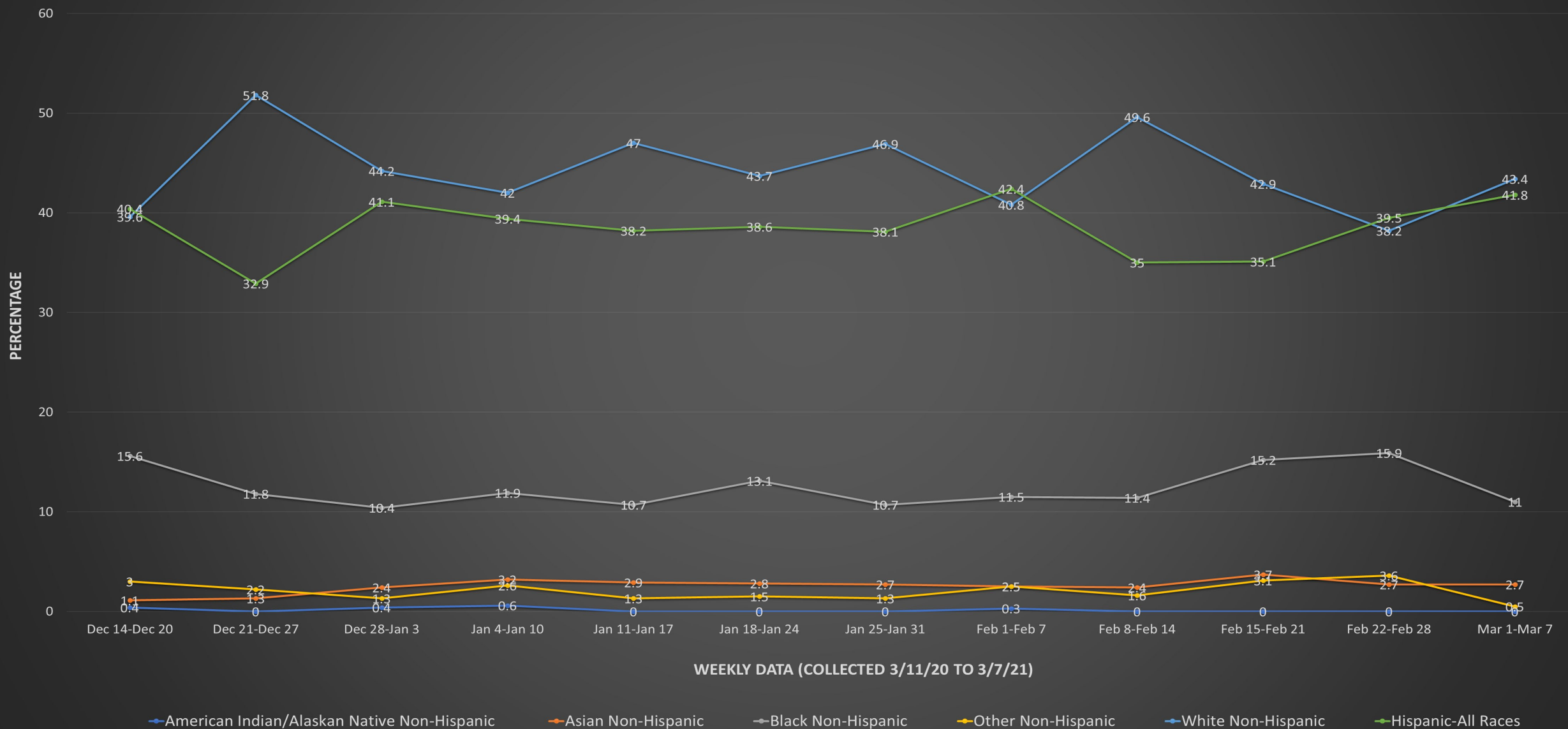
# City of Austin - Travis County COVID-19 Hospitalization by Age Group (Austin MSA)



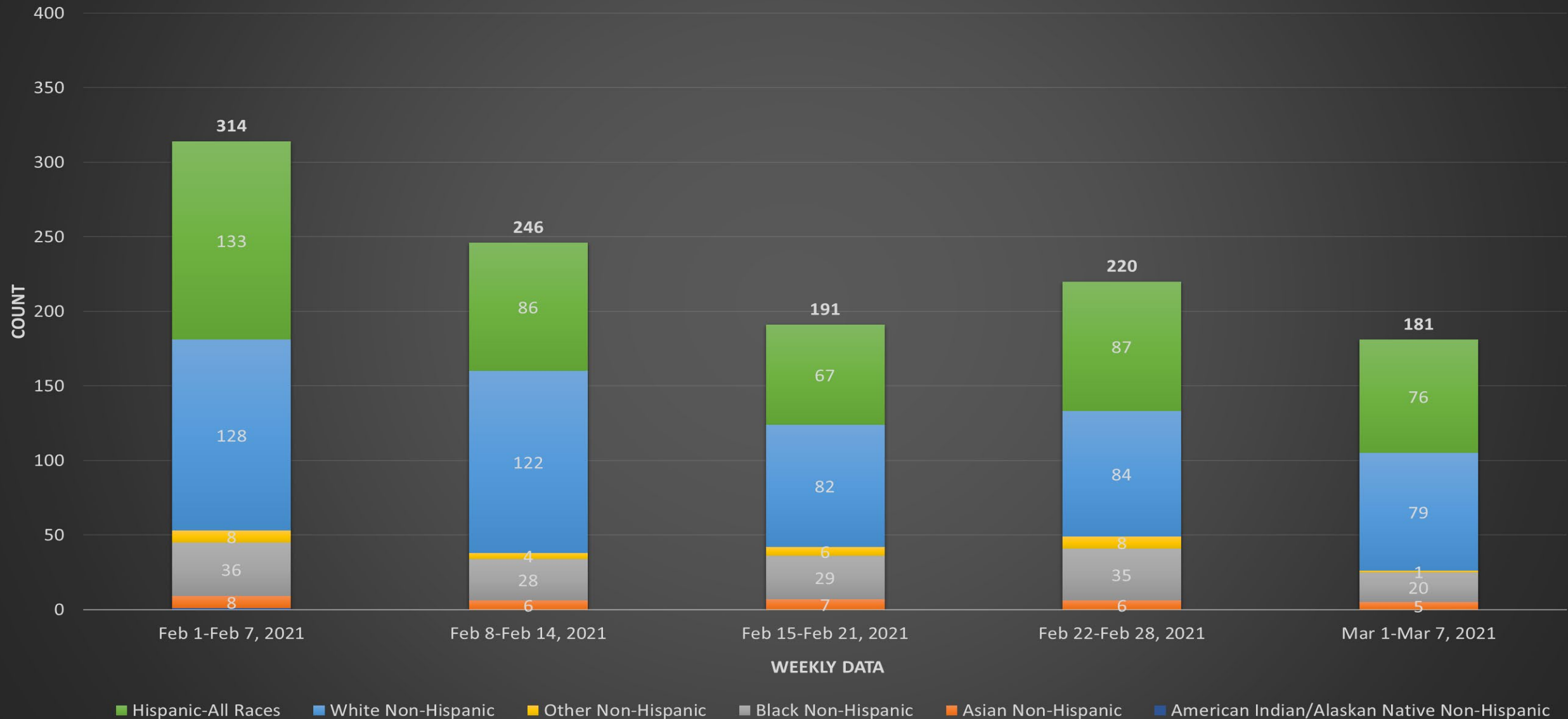
# City of Austin - Travis County COVID-19 Count of Weekly Hospitalizations by Age Group (Austin MSA)

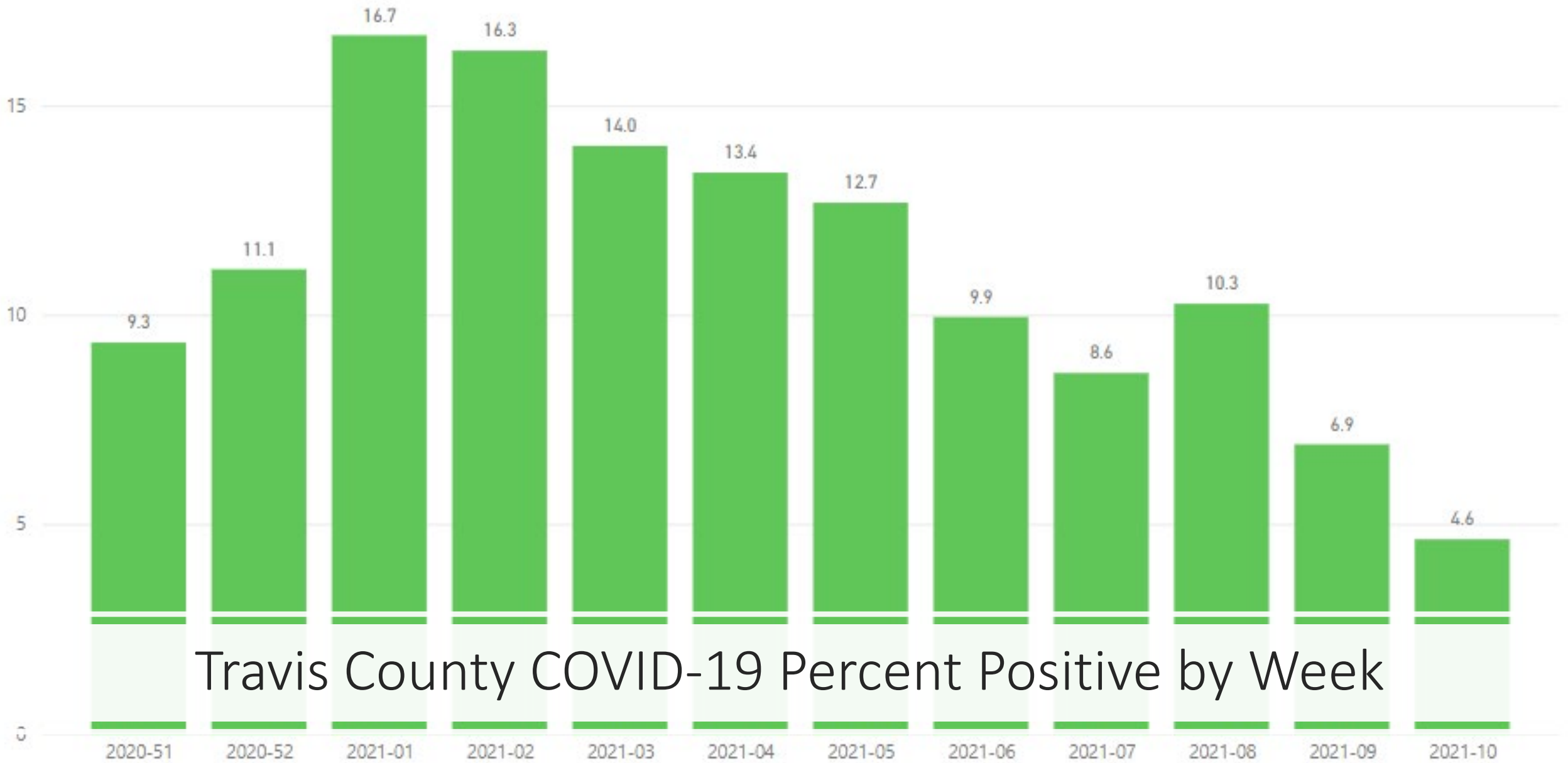


# City of Austin - Travis County COVID-19 Hospitalization by Race & Ethnicity (Austin MSA)



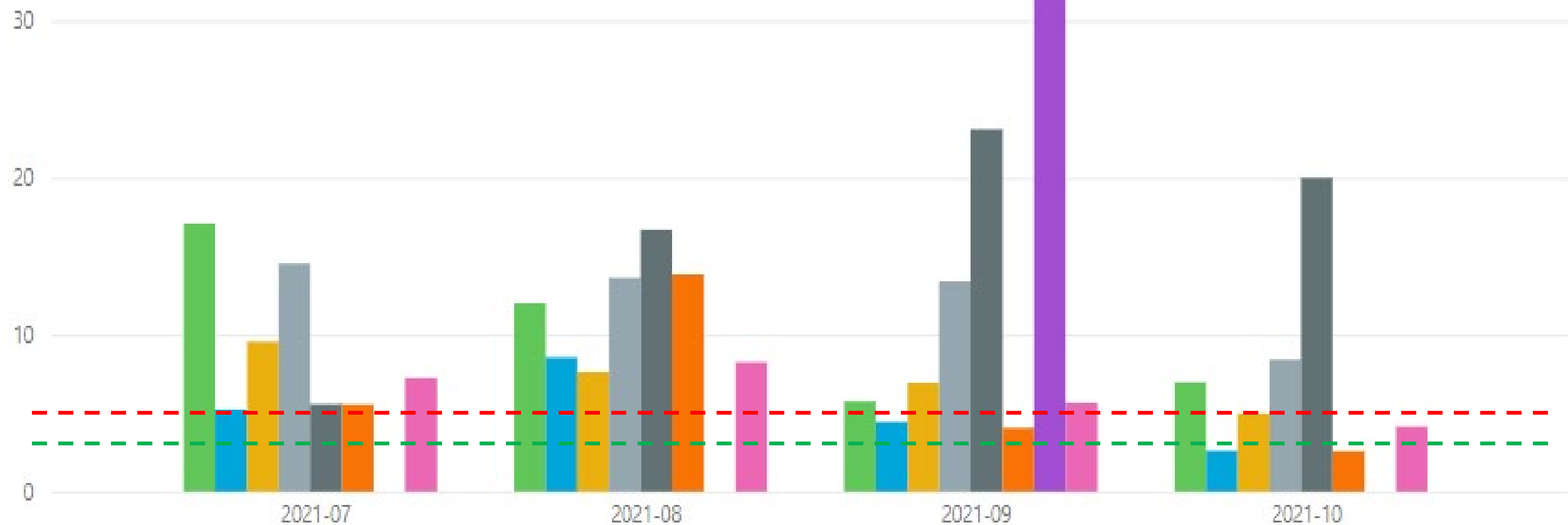
# City of Austin - Travis County COVID-19 Count of Weekly Hospitalizations by Race/Ethnicity (Austin MSA)



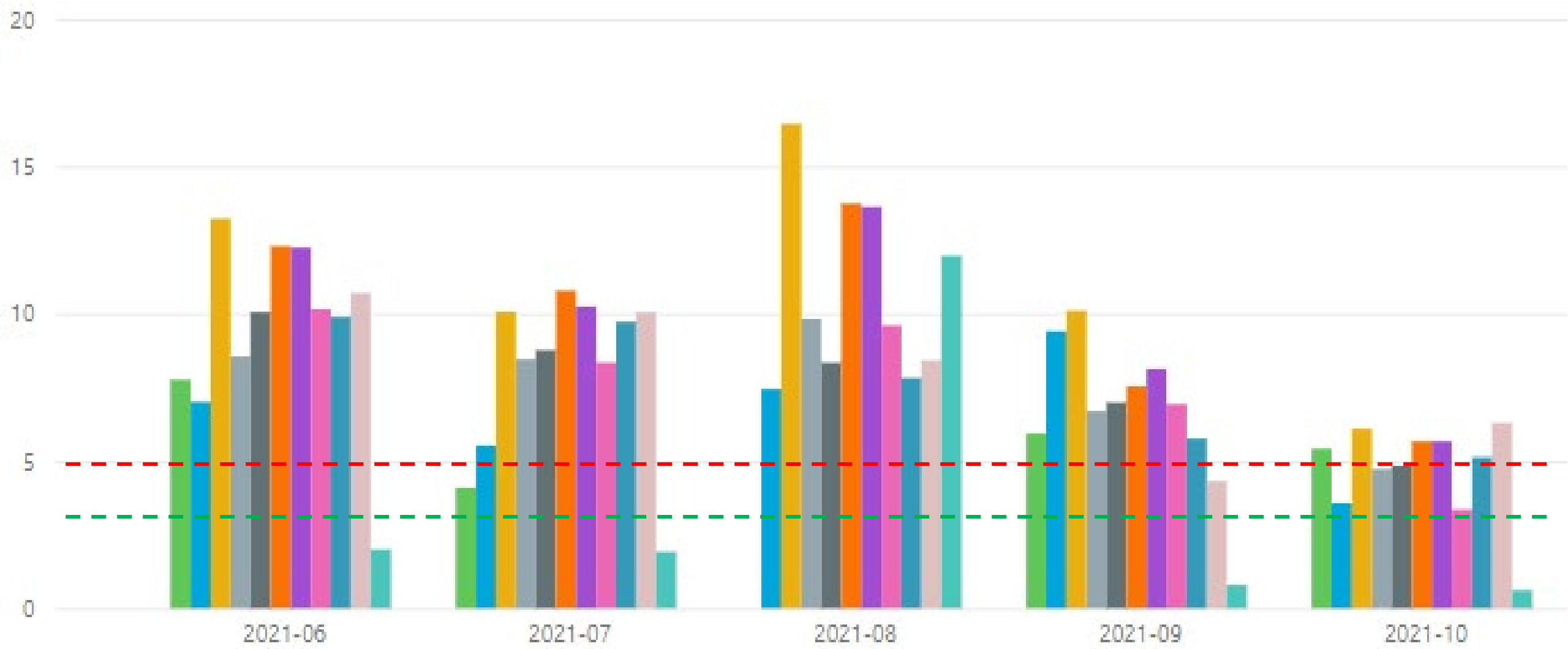


Travis County COVID-19 Percent Positive by Week

Race/Ethnicity 
 ● American Indian or Alaska Native 
 ● Asian 
 ● Black or African American 
 ● Hispanic or Latino 
 ● Native Hawaiian or Other Pacific... 
 ● Other 
 ● Unspecified 
 ● White



Age Group at Collection    <1   01-09   10-19   20-29   30-39   40-49   50-59   60-69   70-79   80+   Unknown



# Positivity in School- aged Children 2/28-3/6

High School: 5.3%

Middle School: 8.7%

Elementary School: 4.3%

Preschool: 5.9%



# Austin - Travis County COVID-19 Long Term Care Facility Weekly Dashboard

For more information on COVID-19 visit:  
<http://austintexas.gov/covid19>

Reported by Austin Public Health: Data  
Refreshed: 3/4/2021  
All numbers are provisional and subject to



## Accession Estates (AL)

Cases within last 14 days: 0

Cases within last 28 days: 0

## Arbor Terrace Lakeway (AL)

Cases within last 14 days: 0

Cases within last 28 days: 1

## Arden Courts (AL)

Cases within last 14 days: 0

Cases within last 28 days: 0

## Auberge at Bee Caves (AL)

Cases within last 14 days: 0

Cases within last 28 days: 0

## Auberge at Onion Creek (AL)

Cases within last 14 days: 0

Cases within last 28 days: 0

### Cases

3,352

### New Cases Within Last 14 Days

10

### New Cases Within Last 28 Days

36

### Deaths

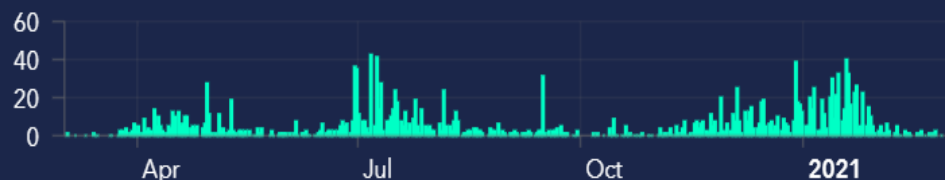
287

### Travis County Percent Positivity

7.4%

Data from February 11-February 24, 2021

### Resident Cases for All Travis County LTCFs



### Staff Cases for All Travis County LTCFs



Resident/Staff Epi Curve

Cumulative Count, & Resources

Hover over segment to see details

### Resident Ethnicity



### Resident Race



### Resident Age Group



### Resident Sex



### Staff Ethnicity



### Staff Race



### Staff Age Group



### Staff Sex





# Regional Infusion Center

- TDEM opened on 1/6
- 730 patients treated
- Current capacity exceeds demand
- Regional Call Center

# Austin/Travis County Alternate Care Site

- 28 patients in ACS on 3/8
- 187 patients treated and discharged
- No additional patients will be admitted to the ACS
- All patients will be dispositioned by 3/20

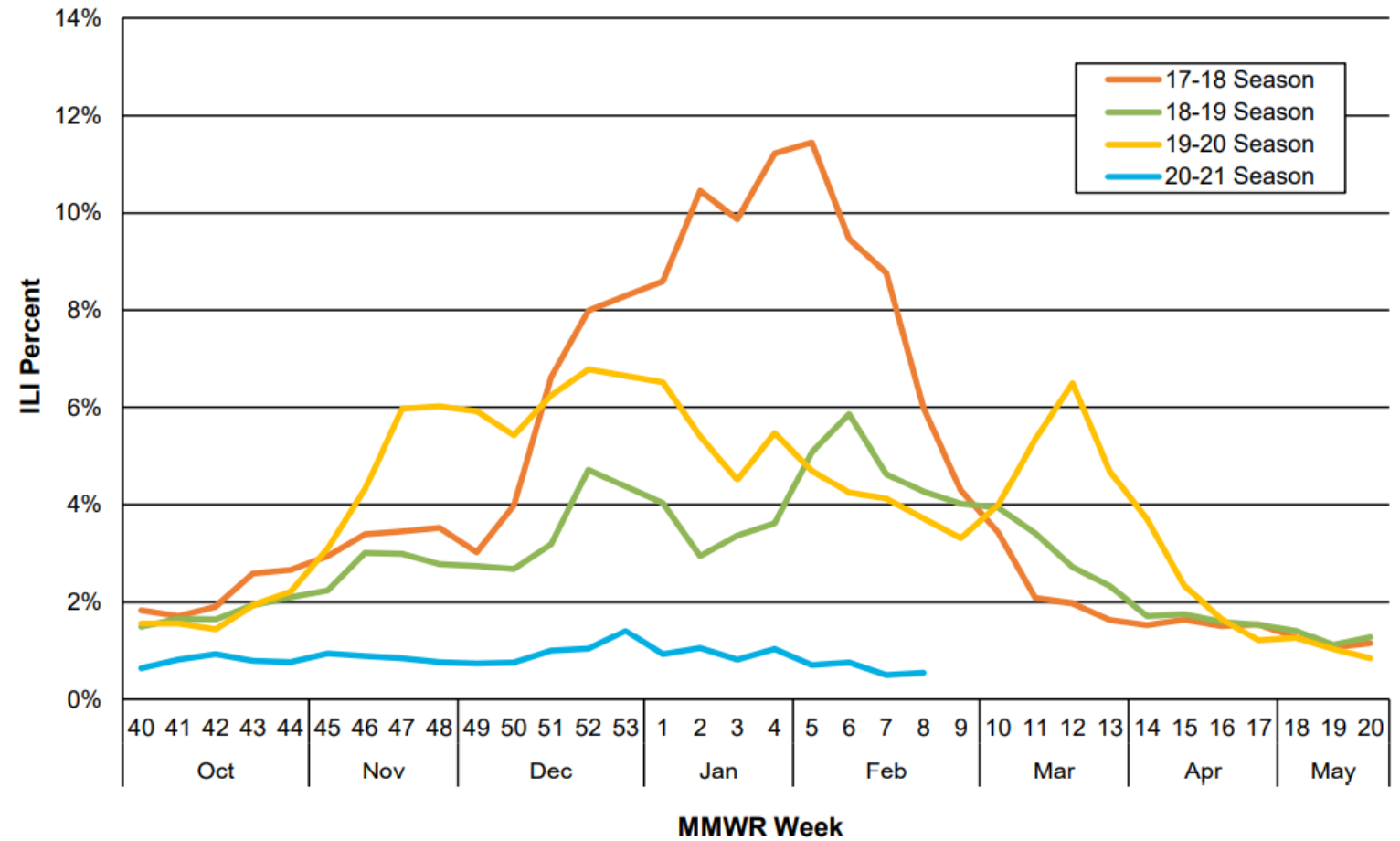


# Travis County Influenza Report

|   | MMWR Week 08 | Season to Date |
|---|--------------|----------------|
| <b>Influenza Tests Performed</b>        | 228          | 8034           |
| <b>Total Positive Influenza Tests</b>   | 1            | 94             |
| <b>% Positive Influenza Tests</b>       | 0.44%        | 1.17%          |
| <b>Positive Rapid Influenza A</b>       | 0            | 29             |
| <b>Positive PCR Influenza A</b>         | 0            | 0              |
| <b>Positive Rapid Influenza B</b>       | 1            | 60             |
| <b>Positive PCR Influenza B</b>         | 0            | 0              |
| <b>Positive Rapid Influenza A and B</b> | 0            | 5              |
| <b>Non-Differentiated Influenza</b>     | 0            | 0              |

# Travis County Influenza Report

**Figure 4. TxS2 ILI Percentage Syndromic Surveillance Data,  
Travis County: 2017-2021**



# COVID-19: Risk-Based Guidelines

| Recommended thresholds<br><br>7-day average hospital admits |         | Practice Good Hygiene | Maintain Social Distancing | Wear Facial Coverings | Higher Risk Individuals<br>Aged 65+, diabetes, high blood pressure, heart, lung and kidney disease, immunocompromised, obesity |                            |                         | Avoid Gatherings           | Avoid Non-Essential Travel | Avoid Dining/ Shopping | Recommended Business Capacity                      |
|---|---------|-----------------------|----------------------------|-----------------------|--|----------------------------|-------------------------|----------------------------|----------------------------|------------------------|--|
|   |         | Stay Home If Sick     |                            |                       | Avoid Gatherings   | Avoid Non-Essential Travel | Avoid Dining/ Shopping  |                            |                            |                        |  |
|   |         | Avoid Sick People     |                            |                       |  |                            |                         |                            |                            |                        |  |
| 0   | Stage 1 | •                     |                            |                       | Greater than 25  |                            | Except with precautions | Gathering size TBD         |                            |                        | 100%   |
| < 10  | Stage 2 | •                     | •                          | •                     | Greater than 10  |                            | Except as essential     | Greater than 25            |                            |                        | 75%  |
| 10 - 29   | Stage 3 | •                     | •                          | •                     | Social and greater than 10   | •                          | Except as essential     | Social and greater than 10 |                            |                        | 50% - 75%  |
| 30 - (50 - 90)*   | Stage 4 | •                     | •                          | •                     | Social and greater than 2  | •                          | Except as essential     | Social and Greater than 10 | •                          |                        | 25% - 50%  |
| > 50 - 90 *   | Stage 5 | •                     | •                          | •                     | Outside of household   | •                          | Except as essential     | Outside of household       | •                          | Except as essential    | Contactless options only (i.e. curbside, delivery) |

# Stage 4 Recommendations

- **High-risk individuals should stay home, except for essential trips such as buying groceries**

- **Everyone should limit non-essential travel**

- **All interactions outside of the household should include masking and 6-ft distancing**

- **Businesses should reduce operating capacity to 25-50%**

- **Schools should limit attendance at sporting events to players, coaches, and parents**

# Joint Statement:



- *“With more COVID-19 vaccines on the horizon, there is hope around the corner. In the meantime, we must continue our vigilance with masking, distancing, and hand washing. This remains critical in our ongoing efforts to protect the community from the virus and its new variants.*
- *Medical facilities can require masks to protect staff and patients and will continue to follow prevention protocols at our organizations. We ask the public to support those in the front line of healthcare by continuing the hygiene practices that are known and scientifically proven to protect our community and those we love.”*



# COVID-19 UPDATE

March 9, 2021

---

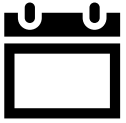
STEPHANIE HAYDEN-HOWARD

AUSTIN PUBLIC HEALTH DIRECTOR

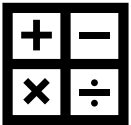


# Scheduling System Update

---



- Appointment releases:
  - Community feedback
  - Main release of appointments for **FIRST DOSES** go live ***Monday evenings***
  - ***If*** more appointments are available APH will plan for a ***Thursday evening*** release



- Additional days of scheduling may be added in the event of operational changes



- IT upgrades

# Vaccine Update

- **~112,948 TOTAL VACCINES**  
(first/second doses)  
administered as of 3/6
- **ALL sites require masks to protect staff and patients**
- APH continues to receive Moderna vaccine
- CAPACITY to operate for ~37,000 a week but have limited supply



*School staff getting vaccine during pilot Jan. 30*

# Vaccine for Childcare, Education, and Senior Population

## Childcare/School Staff

- 5,500 school staff total
- 2,168 childcare staff total
- “School Saturdays” concept

## Senior Population

- 69,770 total vaccinated through APH
- (65 years and older as of 03/08)

## Mobile vaccine program

- Total Locations/Partners Served to date: 15
- Total individuals vaccinated to date: 417

## People Experiencing Homelessness

- Protective lodge
- ARCH

## Equity line outreach

# Strategy Options to Herd Immunity

## Mass Vaccination Operation Strategy

- 25,000 a DAY (x2 with Moderna)
- 16 hour-clinic
- 2,400 staff a day
  - Min \$1.8-\$2.5M a week in salaries
  - Contracted staff (Trail of Lights) additional \$400,000 for walk-up and \$800,000 per drive-thru per month
- Timeline to vaccinate 85% of Travis County population: 8 weeks to vaccinate
- Consider second doses

## Potential APH Vaccine Capacity Per Day *with Mass Vaccine Sites*



6,200 doses



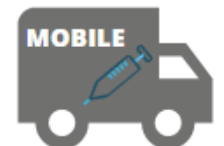
6,200 doses



6,250 doses



6,250 doses



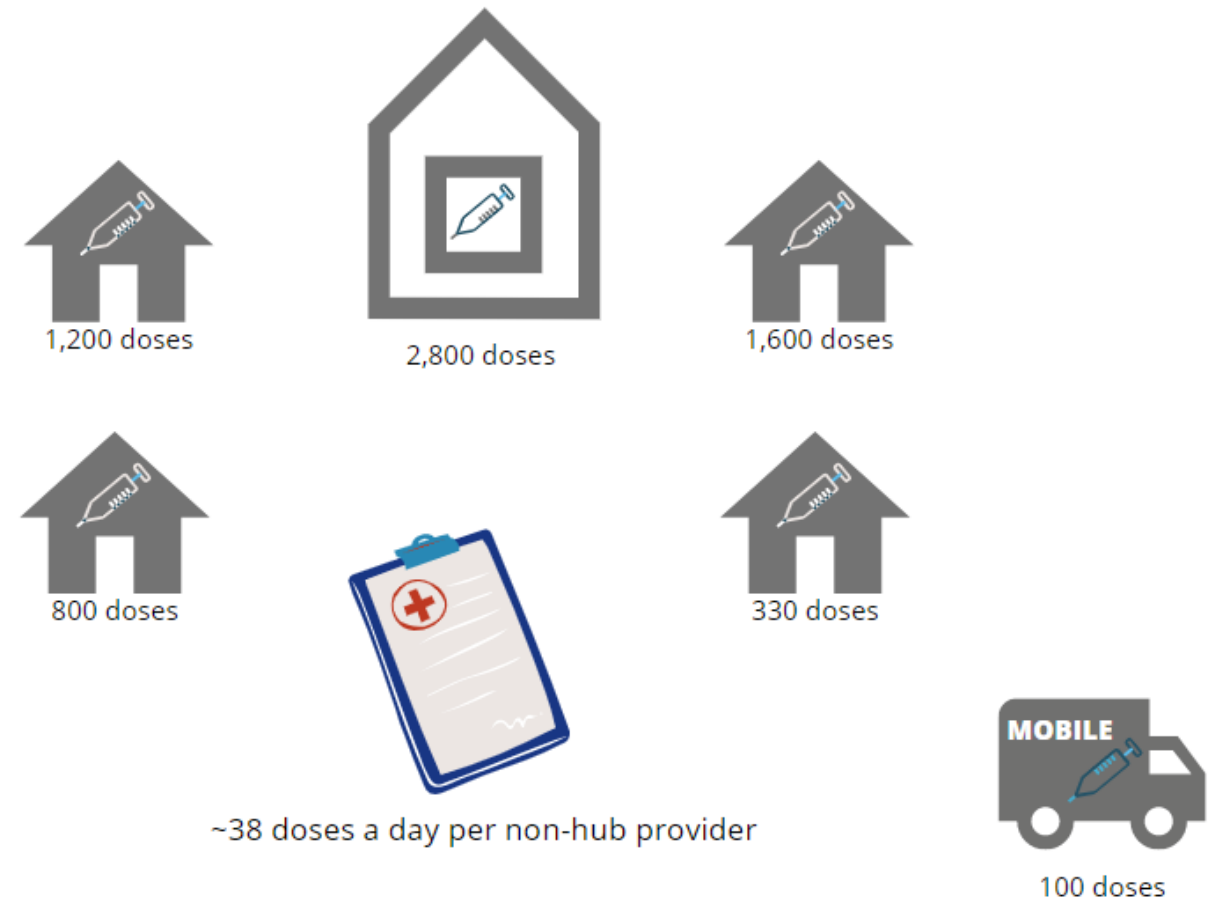
100 doses

# Strategy Options to Herd Immunity

## Public/Private Strategy

- 24,000 a WEEK via hub providers (x2 with Moderna)
- ~267 a week per non-hub provider
- NO additional hours or staff needed
- Timeline to vaccinate 85% of Travis County population: 12 weeks to vaccinate

## Current APH Vaccine Site Capacity Per Day *with non-hub providers*



# Vaccine Equity Best Practices and Community Feedback:

- Overcoming hesitancy
- Non-traditional settings
  - Faith based
  - Libraries
  - Non-profit agency
  - Apartment complexes
  - Community Centers



# Thank you

---