



**HOUSING &
PLANNING**

PROJECT CONNECT ANTI-DISPLACEMENT FUNDING UPDATE

Austin City Council Housing and Planning Committee

March 11, 2021

Content

- Anti-Displacement Funding Amount and Process
- Austin Transit Partnership Document Sequence
- Approved Project Connect Program Sequence Plan
- Resolution 20210204-062 regarding Anti-Displacement Funding



HOUSING &
PLANNING

Anti-Displacement Funding Amount and Process

\$300,000,000 of the Project Connect Tax Revenue for:

- Acquiring real property
- Anti-displacement strategies

Interlocal agreements and/or grant agreements: Between Austin Transit Partnership and the City to develop and implement anti-displacement strategies

Equity Assessment Tool: Create with the community, neighborhood-level prevention and mitigation strategies based on the Equity Assessment Tool



HOUSING &
PLANNING

Equity Tool Update

Team Structure

- City of Austin Equity Office, Innovation Office, Resiliency Office, Housing and Planning Department, Transportation Department

Process

- Define environment to advance equity
 - Consultant-led, resident-centered co-creation of the tool
 - Implementation and assessment of the tool
-



HOUSING &
PLANNING

Equity Tool Update

Environment Necessary to Advance Equity

- City of Austin Equity Office, Innovation Office, Resiliency Office, Housing For an equity tool to be effective, it needs an environment conducive to receiving and using the data and information it yields, including:
 - Centering on the values of and having a shared mandate for racial equity;
 - Identify and correct imbalances to power and decision-making structures; and
 - Accountability to those most directly impacted by displacement pressures
-



**HOUSING &
PLANNING**

Equity Tool Update

- Call for participants to develop the equity tool
- Composed of people in need of transit and affected by displacement pressure
- Paid \$25 per hour
- Displacement risk factors:
 - Living in gentrifying area
 - Making less than \$43,043 per year
 - Experiencing homelessness
 - Lacking access to a personal vehicle and depending on public transit for transportation needs
 - Being part of a demographic that is vulnerable to displacement



CALL FOR APPLICANTS! ¡ANUNCIO DE OPORTUNIDADES; SE BUSCAN SOLICITANTES!

1

EQUITY TOOL DEVELOPMENT SHORT-TERM PROJECT
PROYECTO A CORTO PLAZO DEL DESARROLLO DE HERRAMIENTA DE EQUIDAD
www.surveymonkey.com/r/participatewithCOAresilience

2

PROJECT CONNECT COMMUNITY ADVISORY COMMITTEE
COMITÉ DEL CONSEJO COMUNITARIO DE PROJECT CONNECT
www.projectconnect.com/get-involved

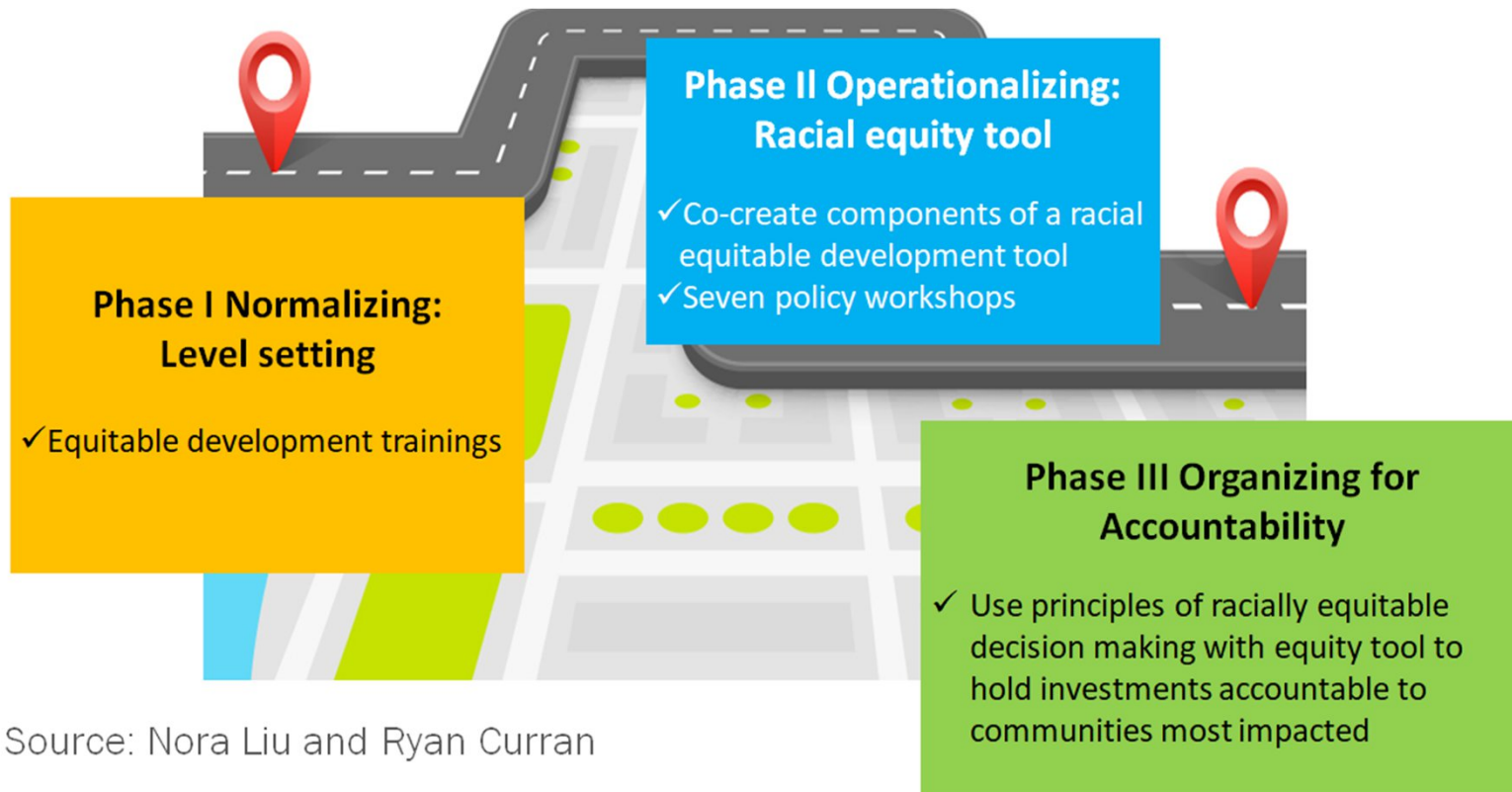
The Project Connect logo, featuring a stylized 'P' and 'C' with a location pin icon, followed by the text "projectconnect".





**HOUSING &
PLANNING**

Equity Tool Update



Source: Nora Liu and Ryan Curran



Austin Transit Partnership Document Sequence

2020

ATP Creation Resolution,
ATP Articles of Incorporation

- Resolution creating the ATP, approval and adoption of the ATP Articles of Incorporation, appointment of initial board
- Resolutions regarding community advisory committees
- Commitment to program implementation
- Coordination of resources via new Project Connect Program Office

2021

City of Austin – ATP Program
Implementation Support ILA

2021

Capital Metro – ATP
Corporate Support Functions
ILA

- Commitment to program implementation
- Cost-sharing agreement for corporate functions, including Finance, HR, IT, Finance, Safety, Planning

2021

Anti-Displacement Program
Funding Grant Agreement

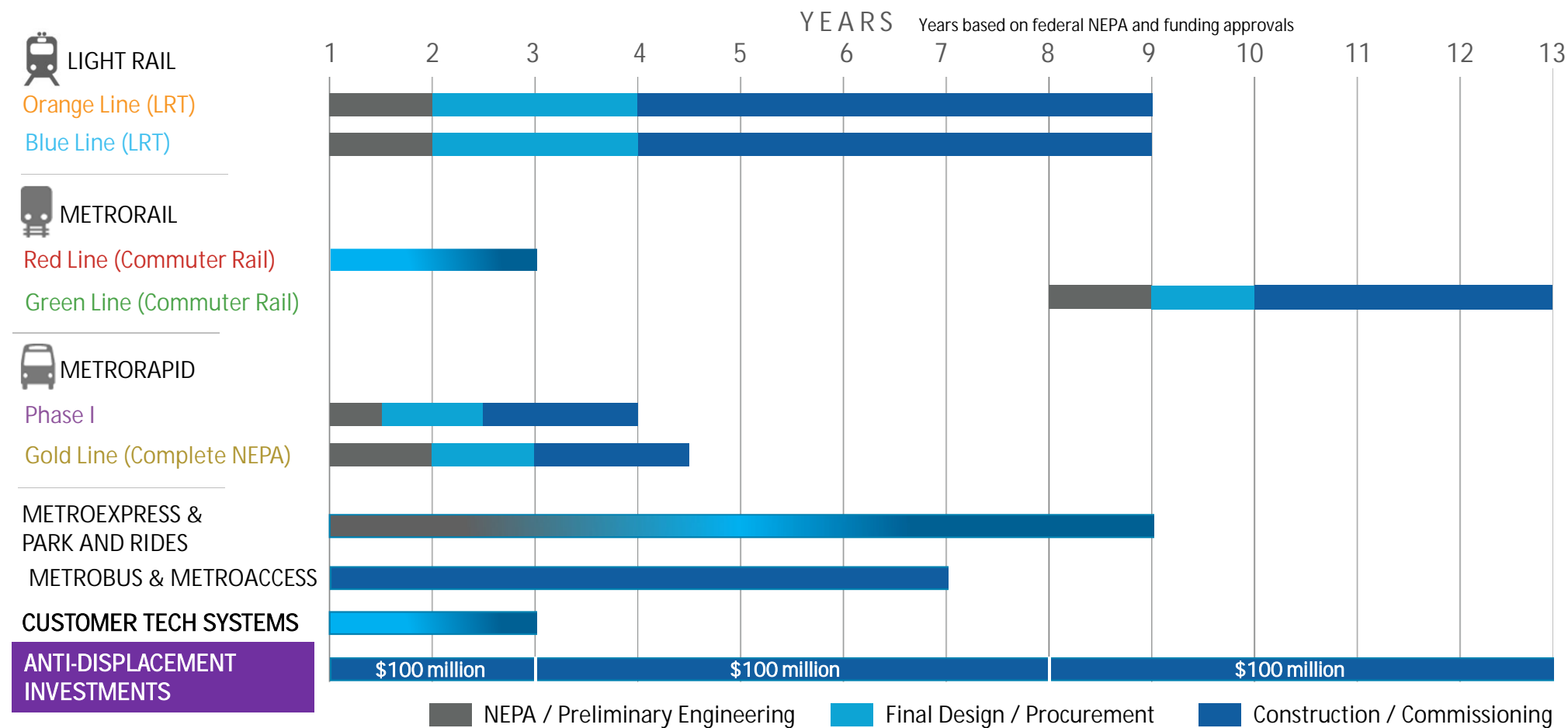
- **Agreement to implement anti-displacement strategies including real estate acquisition, financing tools and affordable housing near transit corridors**

No Later Than
June 2021

Tri-party ATP Joint Powers
Agreement

- Agreement between Capital Metro, City of Austin and ATP for program implementation and support functions
- Includes utilities, right of way, traffic control and all other program needs not included in previous ILAs

Approved Project Connect Program Sequence Plan



Resolution No. 20210204-062

- Contract with the Voters (\$300 million Anti-Displacement Strategies)
 - Austin Transit Partnership Grant Agreement
 - Equity Tool
- \$23 million available FY2021



Land Acquisition

Community-based organizations

501(c)(3)

Small sites (<1 acre)

Rapid acquisition

Areas vulnerable to displacement

Project Connect High Capacity Corridors

Preservation

Existing rental or ownership

Larger sites (>1 acre or 5 units)

Focus on cooperatives

Partners with strong track record

Areas vulnerable to displacement

Project Connect High Capacity
Corridors

Next Steps

- Program Guidelines
 - Program parameters
 - Processes
- Request for Qualifications
 - Precertify qualified nonprofit organizations
 - Deploy funding exclusively to precertified nonprofits



**HOUSING &
PLANNING**

Thank You

Questions?