

Easements Proposed for Acquisition Located at East US 290 Highway and Harris Branch Parkway



This product is for informational purposes and may not have been prepared for or be suitable for legal, engineering, or surveying purposes. It does not represent an on-the-ground survey and represents only the approximate relative location of property boundaries.

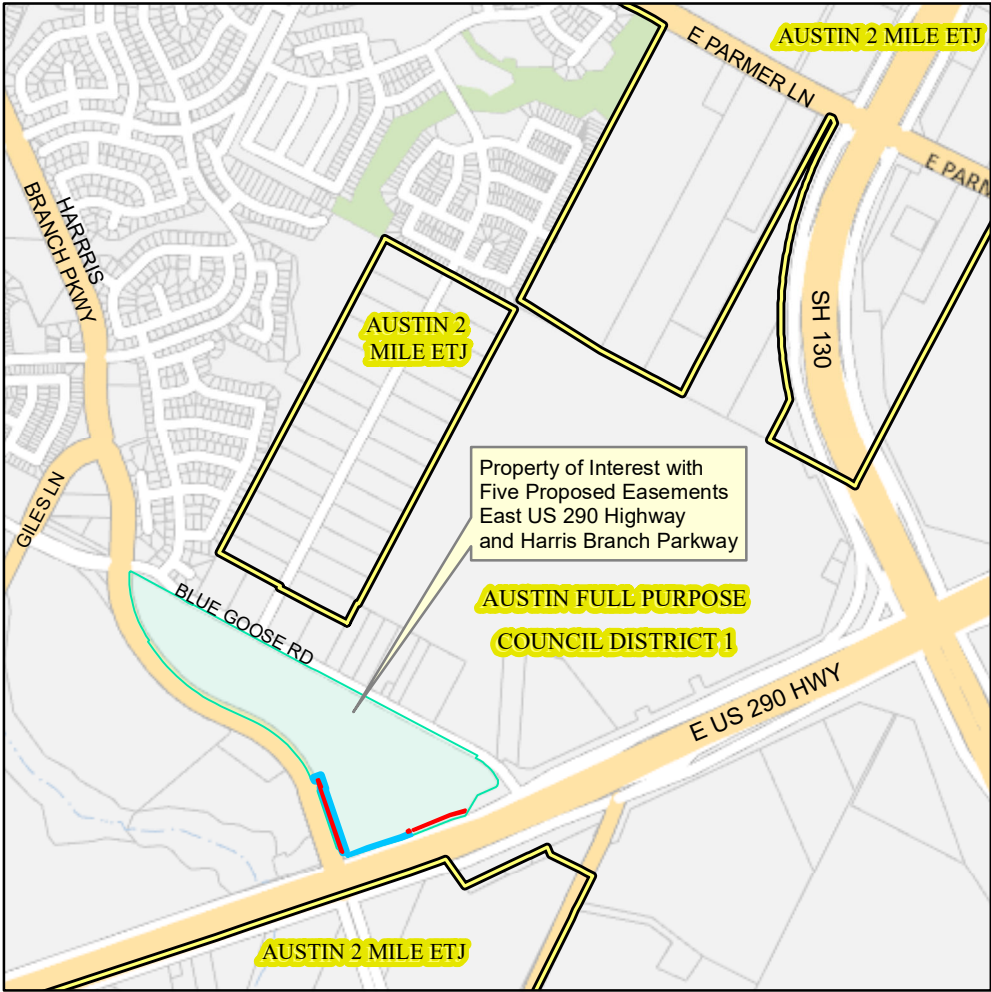
This product has been produced by the Office of Real Estate Services for the sole purpose of geographic reference. No warranty is made by the City of Austin regarding specific accuracy or completeness.

Produced by M McDonald, 1/8/2021
Revised 2/4/2021
File Number 4983.01

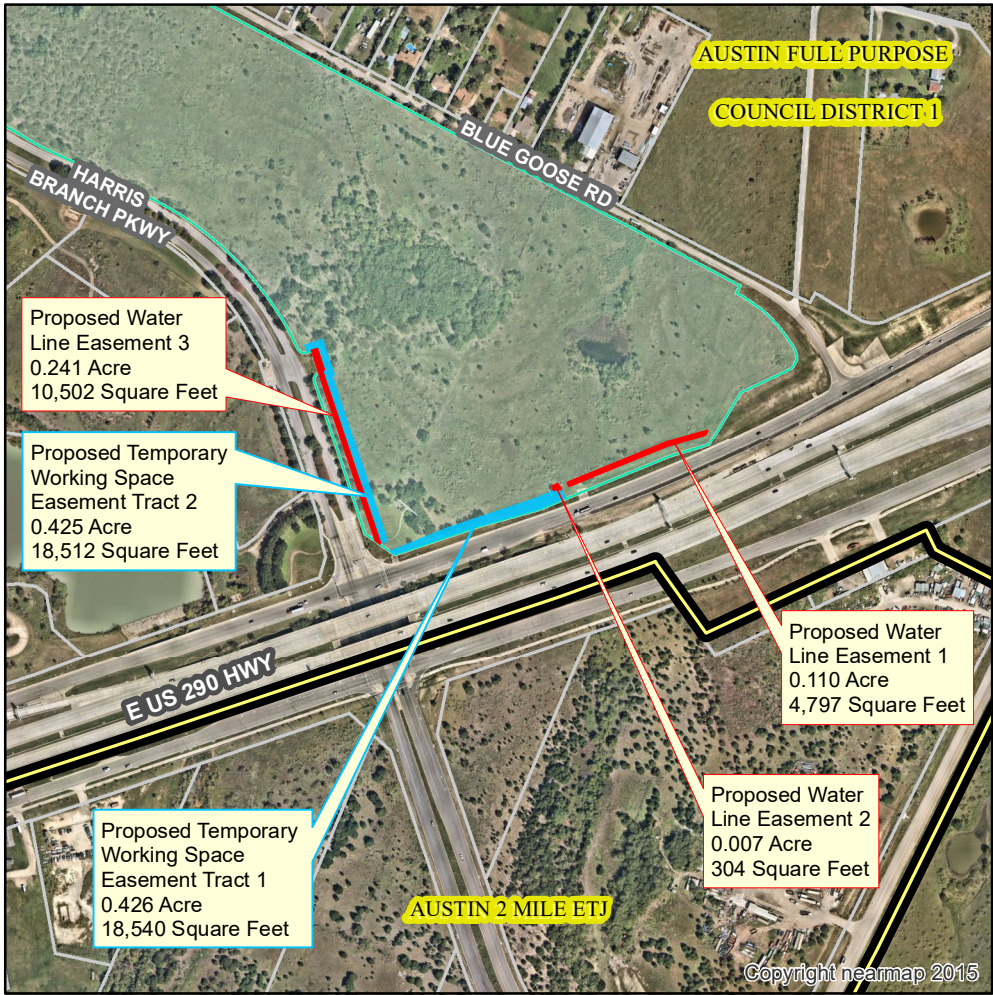
- Property of Interest
- Proposed Water Line Easements
- Proposed Temporary Working Space Easements

- City Council Districts
- TCAD Parcels

Nearmap US Vertical Imagery, ESRI



0 2,000 4,000 Feet



0 500 1,000 Feet