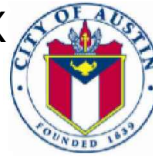






Proposed Fee Simple Acquisition of the Euers Properties in the Total of Approximately 109-acres in Hays County, TX

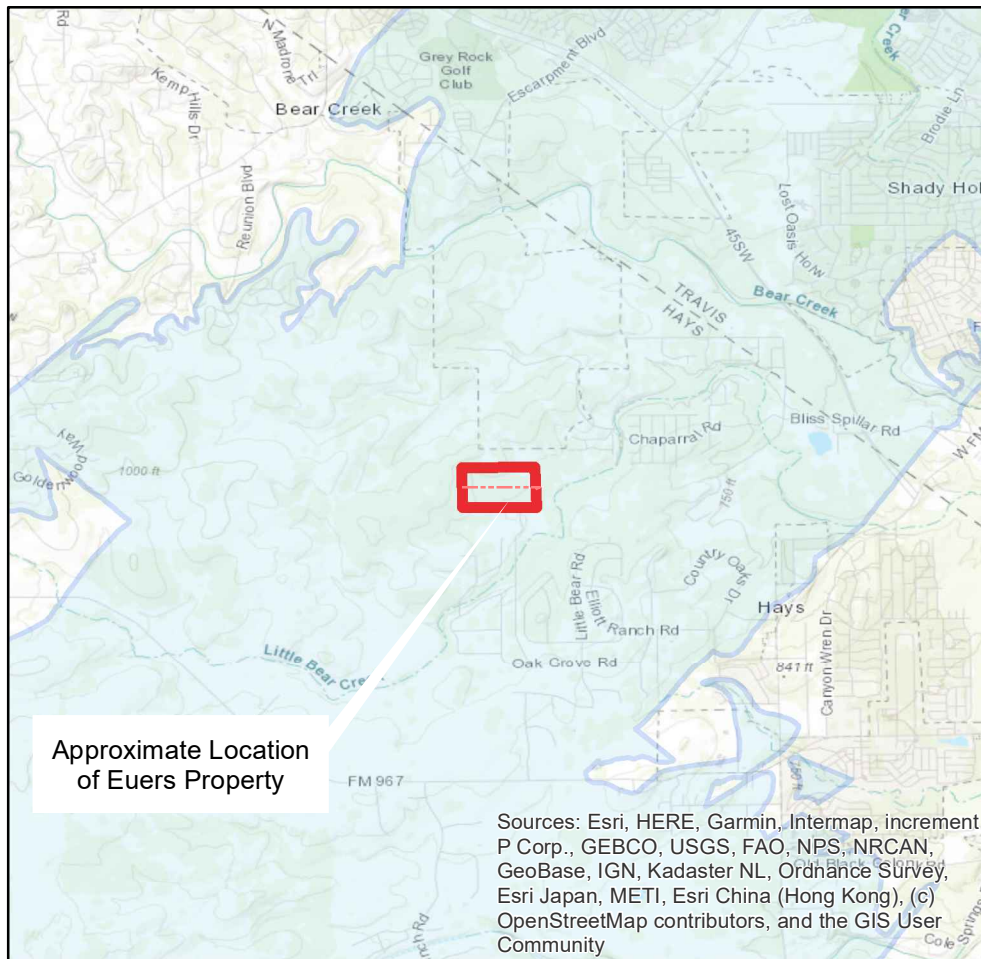


-  Euers Tract
-  Edwards Aquifer Recharge Zone
-  Fee Simple
-  Hays Parcels

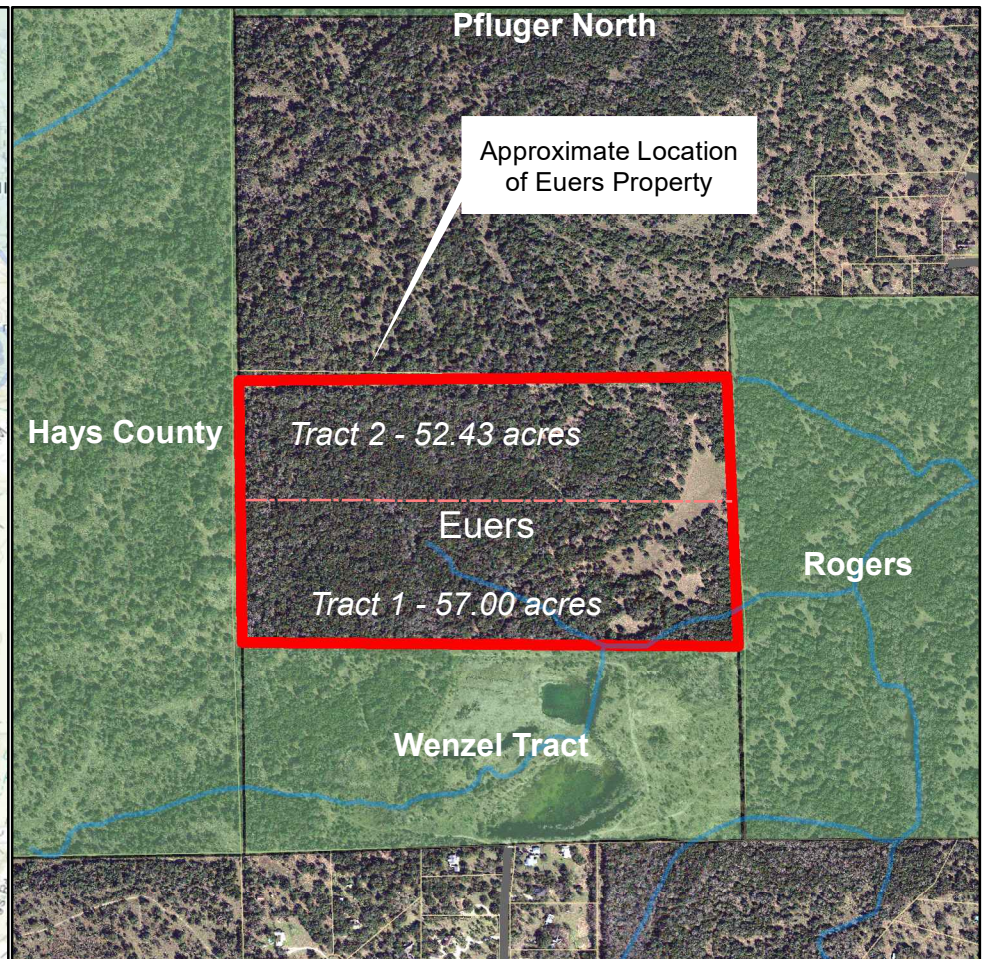
This product is for informational purposes and may not have been prepared for or be suitable for legal, engineering, or surveying purposes. It does not represent an on-the-ground survey and represent only the approximate relative location of property boundaries.

This product has been produced by the Watershed Protection Department for the Office of Real Estate Services for the sole purpose of geographic reference. No warranty is made by City of Austin regarding specific accuracy or completeness.

Produced by S. Hiers, 3/11/2021



0 1 2 4 Miles



0 0.25 0.5 1 Miles