


Proposed Property for Disposition
By the City of Austin
Located in Reeves County, Texas



This product is for informational purposes and may not have been prepared for or be suitable for legal, engineering, or surveying purposes. It does not represent an on-the-ground survey and represents only the approximate relative location of property boundaries.

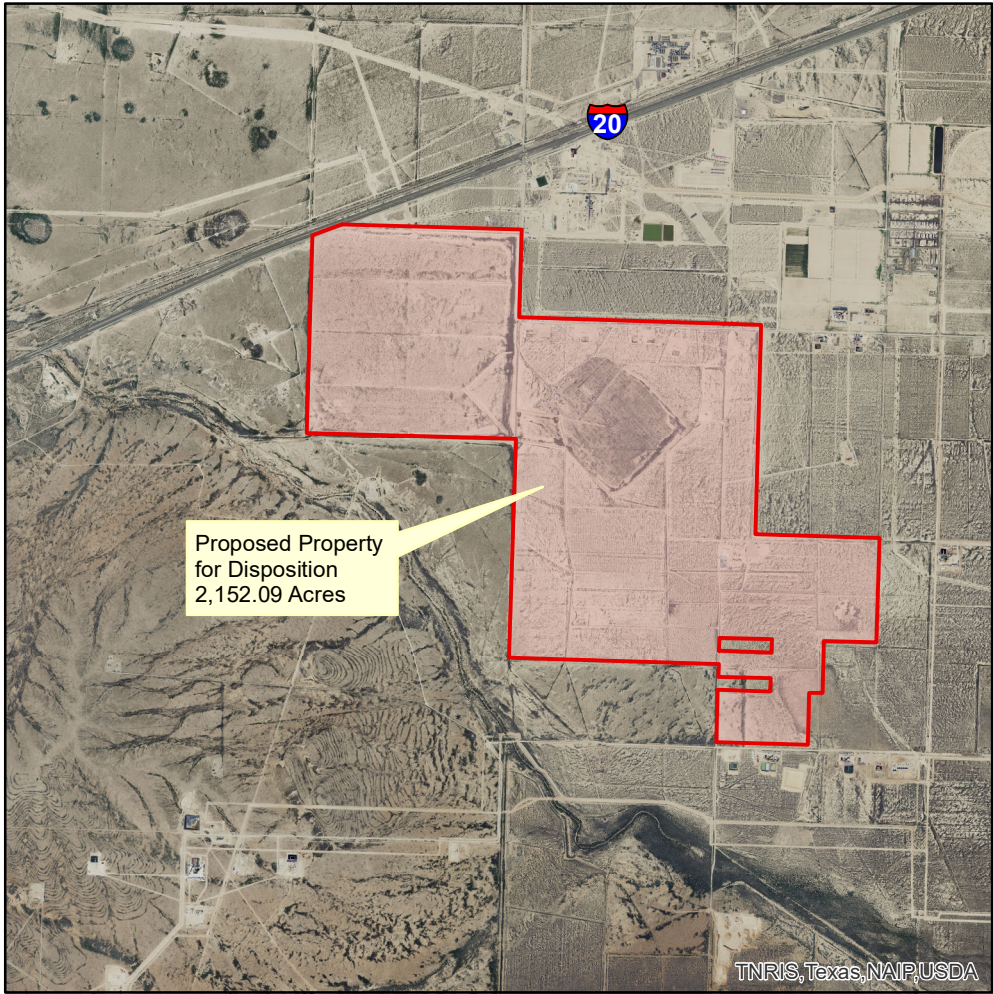
This product has been produced by the Office of Real Estate Services for the sole purpose of geographic reference. No warranty is made by the City of Austin regarding specific accuracy or completeness.

Produced by M McDonald, 4/6/2021

 Proposed Property for Disposition
TNRIS Texas NAIP Aerial Imagery 2018



0 100 200 Miles



0 5,000 10,000 Feet