

# PROJECT CONNECT: Program Updates

---

**Mobility Committee**

August 5, 2021

## Recent Project Connect Program Updates:

- **\$2.88 million** Federal Transit Administration (FTA) grant for 40-foot electric buses, charging equipment, workforce training, and technical assistance.
- Capital Metro and Austin F.C. approval of a funding partnership agreement for a new **McKalla Station** at Q2 Stadium.
- Launched Capital Metro's **North Dessau** and **South Menchaca** Pick Up zones in June and July – first operational Project Connect program elements. **North Oak Hill** zone coming this fall.
- Completion of **15-percent design** drawings for Orange and Blue Line; letters to FTA requesting entry into the **New Starts** capital grant program submitted.
- \$36 million in FTA Small Starts grant funding included in the President's FY2022 budget for MetroRapid **Pleasant Valley** and **Expo** Lines
- City Project Connect Office included in City FY22 Budget for **12 new FTEs**

# PROJECT CONNECT PROGRAM COMPONENTS:

## PROJECT CONNECT – PROGRAM COMPONENTS

Orange Line – NLTC to Stassney Phase 1 (LRT), Enhanced MetroRapid

Blue Line – Riverside Corridor (LRT)

Gold Line – MetroRapid, NEPA completion for LRT

Downtown Tunnel (Orange, Blue Lines)

MetroRapid – Expo, Pleasant Valley, Burnet to Menchaca/Oak Hill

Green Line to Colony Park – NEPA, Final Design, Construction

Red Line Improvements

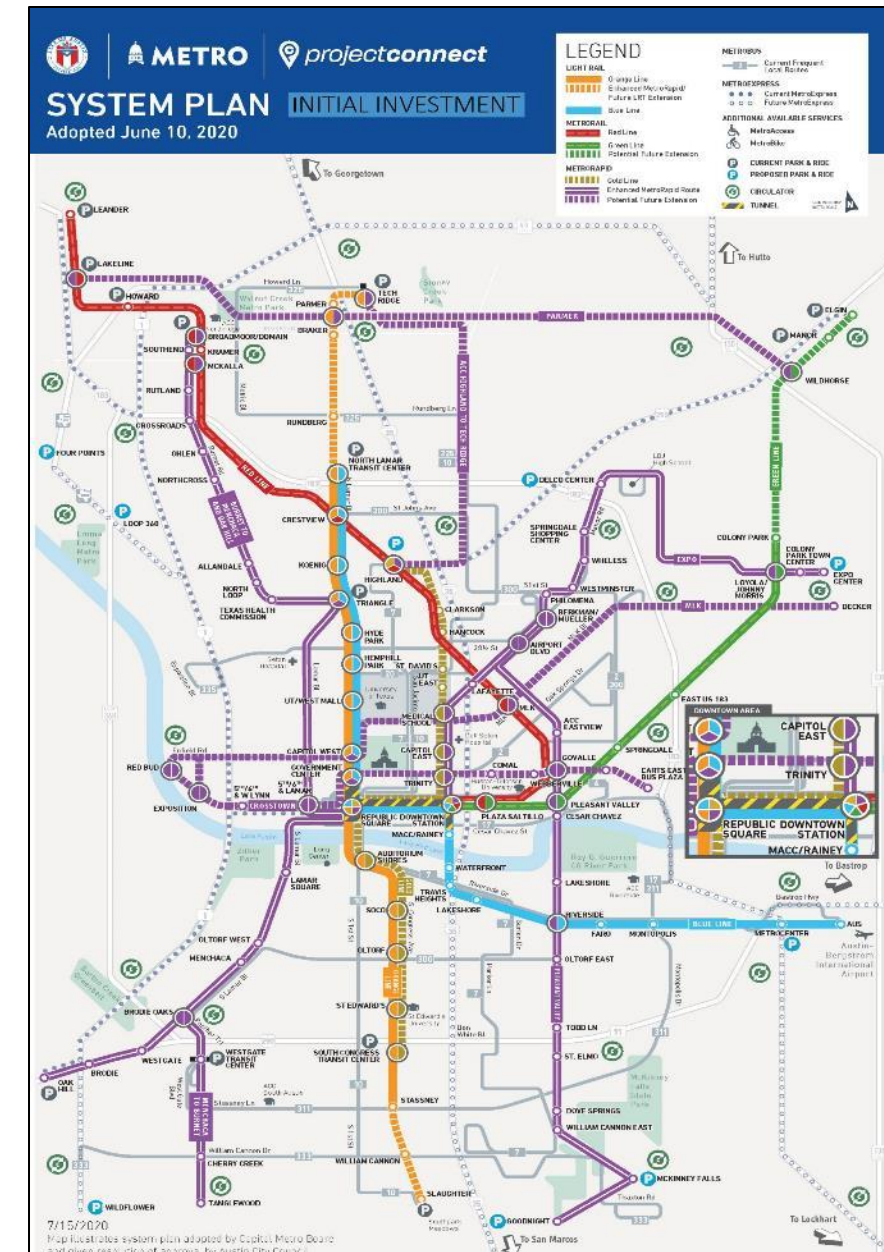
MetroExpress, Park & Rides, Transit Centers (3 New Routes, 9 P&R, 1 TC)

Neighborhood Circulators (15 New Zones / Vehicles)

Maintenance Facility Improvements

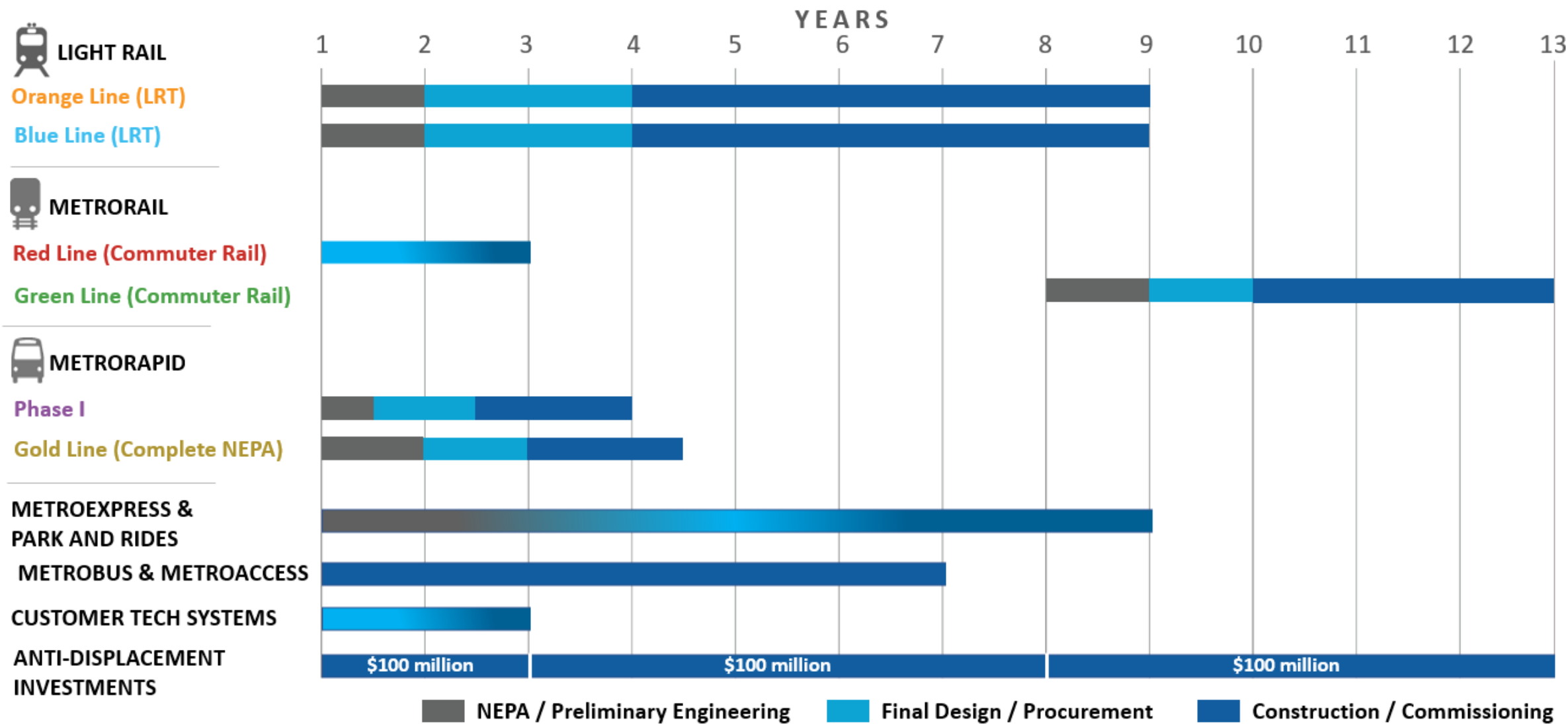
Customer Technology Systems

Anti-Displacement Investments (\$300 million)

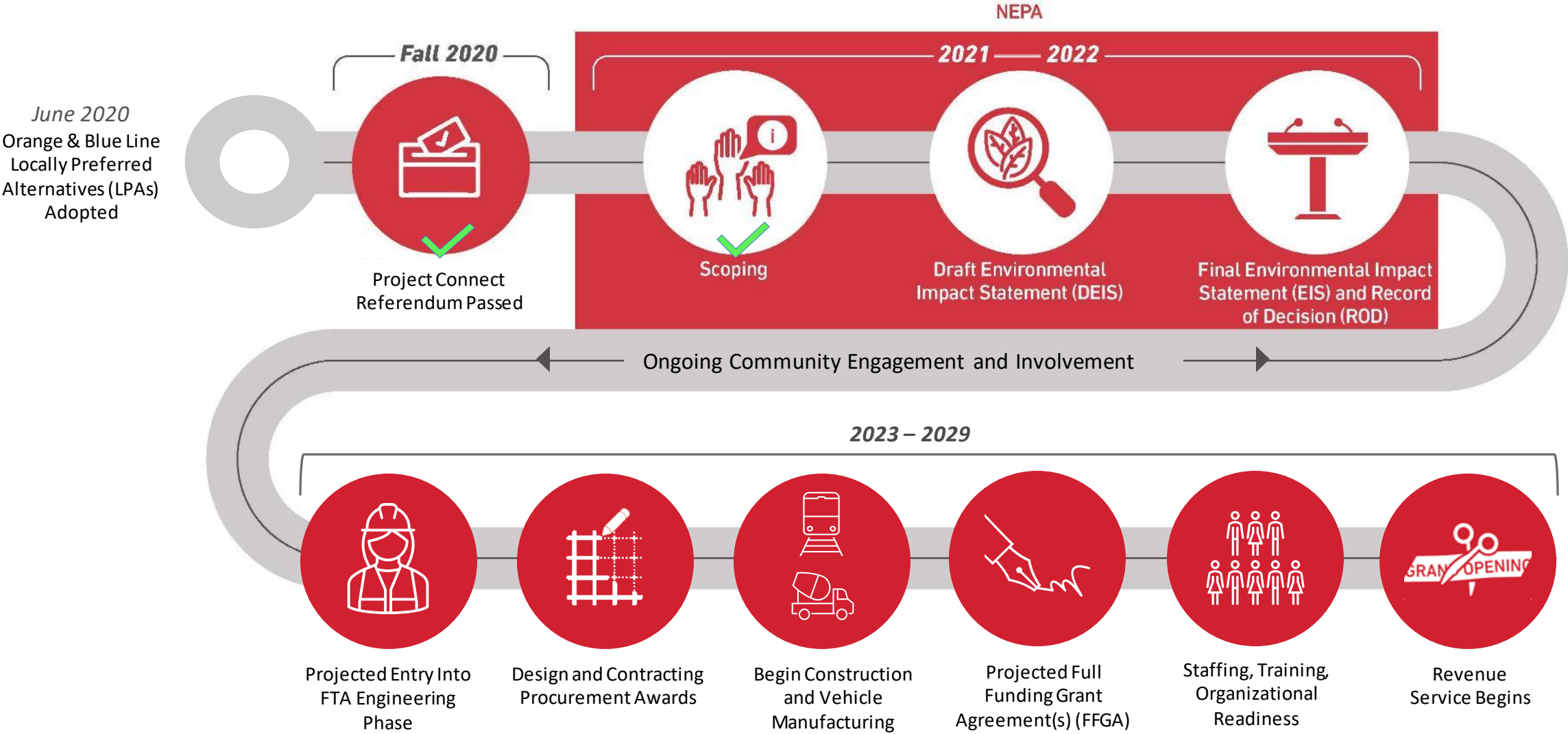


# PROGRAM SEQUENCE PLAN

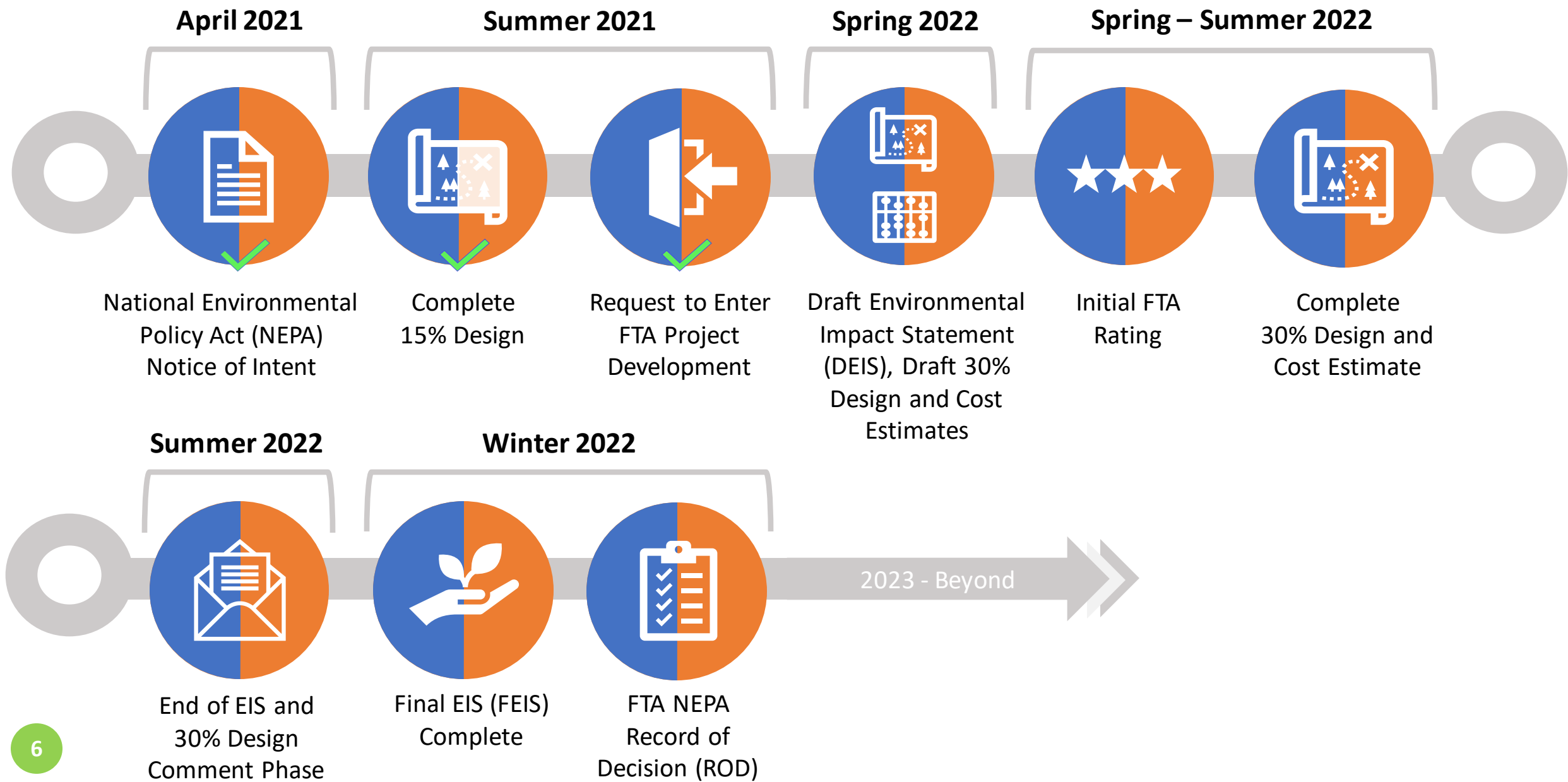
Years based on federal NEPA and funding approvals



# Orange & Blue Line Projects – Implementation Timeline



# Orange & Blue Line Key Milestones (2021 – 2022)



# Project Connect MetroRapid Milestones – Expo & Pleasant Valley

April 2021



Complete 30%  
Design and  
Cost Estimates

Spring – Summer 2021



FTA Categorical  
Exclusion (CE)  
Approval



Design and  
Contracting  
Procurement  
and Awards



Vehicle  
Procurement

Winter 2021 – Spring 2022



Begin  
Construction



Small Starts  
Grant  
Agreement

2023



Vehicle Delivery  
Begins



Staffing, Training,  
Organizational Readiness



Begin Revenue  
Service



# Red Line & Pick-Up Service Updates:

## Red Line

### McKalla Station

- Categorical Exclusion document submitted to FTA on June 28<sup>th</sup>
- 30% Design will be completed in July
- Real Estate Management Plan (RAMP) in development
- Safety Analysis in progress
- Ongoing coordination with City of Austin

### Broadmoor Station

- Ongoing coordination with station neighbors regarding drainage, and construction easements
- Coordination with Urban Trail team on Red Line Trail

### Lakeline-to-Leander

- Construction bidding in progress

## Neighborhood Circulators

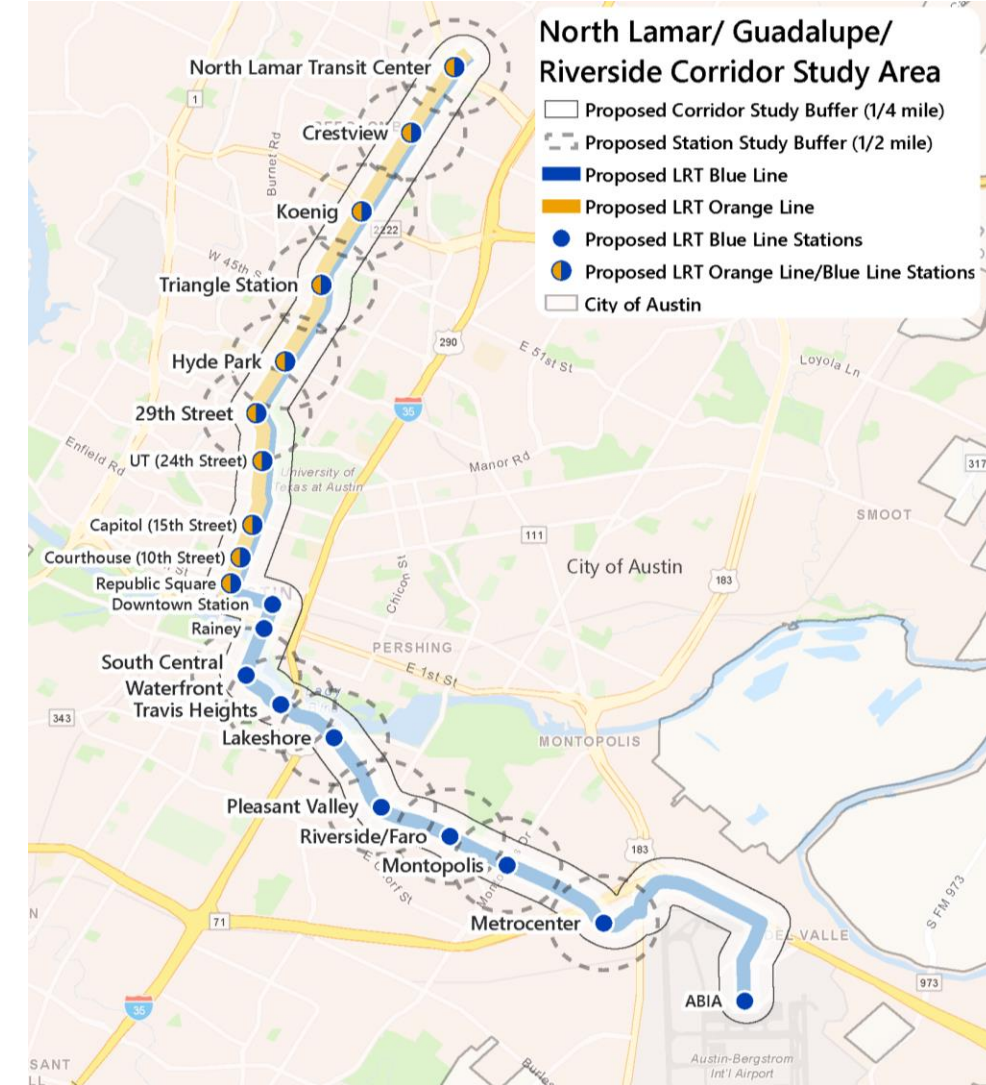
- Dessau zone launched on June 15<sup>th</sup>
- South Menchaca zone launched on July 27<sup>th</sup>
- North Oak Hill will launch in late August
- In-depth community engagement continues for the two upcoming zones
- Public-facing dashboards in development for a late summer release





# Equitable Transit Oriented Development (ETOD)

- FTA Awarded Capital Metro **\$900k** for the Pilot Program for TOD Planning; Included in CAMPO Unified Planning Work Program
  - Focus on the 12-mile North Lamar/Guadalupe/Riverside Corridor with **13 stations along the Blue Line and Orange Line**
  - Emphasis on defining ETOD opportunities through **equity framework** and **meaningful public participation**, especially in communities at high risk for displacement
- Presented at City Council Mobility Committee
- Coordinated with City of Austin Housing and Planning, Equity Office, Transportation Department, and Austin Transit Partnership



# ETOD Process and Planning/Policy Outcomes

## ENGAGEMENT AND ANALYSIS PROCESS

- **Public Engagement Strategy**
  - Partner with the City of Austin (COA) to engage the community, including the Community Advisory Committee (CAC), to define future growth around new transit stations and along corridors.
- **Current Conditions Review**
  - Review the existing conditions for station areas including equity, multimodal safety and access to transit, and development potential.
- **Catalyst Stations Selection**
  - Stations high in growth and displacement will be selected as catalyst sites for in depth station area plans.

## PLANNING AND POLICY OUTCOMES

- **Data Development and Coordination**
  - Update existing CapMetro TOD tool, strategies, and policies and coordinate with COA for relevant City TOD policies.
- **Policy Toolkit**
  - Identify opportunities to increase affordable housing for station areas to assist with COA anti-displacement strategies.
- **ETOD Land Use Strategies**
  - Develop potential land use and zoning recommendations to enhance ridership and make Project Connect more competitive for federal grants.
- **Station Area Plans**
  - Develop ETOD station plans and guidelines to influence potential public private partnerships (P3).

# **JOINT PARTNERSHIP AGREEMENT:**

## Next Steps for Project Connect

---

# Austin Transit Partnership – Joint Venture

---



# Austin Transit Partnership – Integrated Program Delivery



Orange Line  
Blue Line  
Tunnel  
Green Line - Phase 1  
Facilities



MetroRapid  
MetroExpress  
Neighborhood  
Circulators (Pickup)  
Customer Tech  
Red Line - Phase 1



Transit Supportive  
Anti-Displacement  
Investments  
Utilities Relocations  
Permitting  
Right of Way, etc.

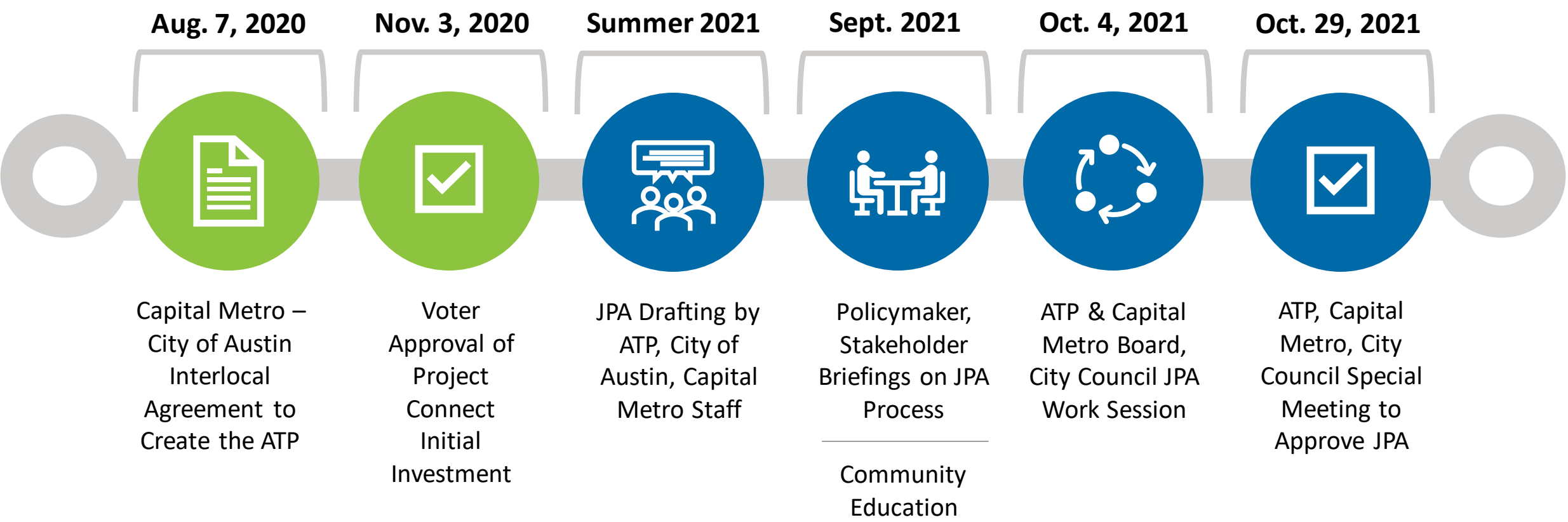


# Joint Partnership Agreement (JPA) – Triparty Topics

ATP, Capital Metro and the City of Austin will approve a JPA to delineate technical roles, responsibilities and processes for Project Connect implementation

JPA TOPICS	JPA SECTION HIGHLIGHTS
COMMUNITY ENGAGEMENT	Good Neighbor business and community assistance program, guidance on public engagement
DESIGN, PERMITTING, UTILITIES & CONSTRUCTION	Design review and permitting, Right of Way (ROW) management, utilities design and relocation
WORKFORCE	Local hire and apprenticeship programs, worker safety and support program
FINANCE, BUDGET & PROCUREMENT	Financial model overview, system sequence plan update process, internal audit, ATP Disadvantaged Business Enterprise (DBE) program
REAL ESTATE	Process to acquire or sell property, property acquisition processes, development proposals
SUSTAINABILITY	Process to develop sustainability criteria and environmental programs
SAFETY	Process for system safety program oversight certification, testing and training
OPERATIONS & MAINTENANCE	Capital Metro Operations & Maintenance processes, traffic signal coordination, public safety

# Joint Partnership Agreement (JPA) – Next Steps





# Upcoming Engagement Opportunities

## **Blue and Orange Lines 15% Design Community Meetings**

- **Virtual Community meetings July 27 – August 5**
  - Two Blue Line virtual meetings with working group breakout discussions
  - Two Orange Line virtual meetings with working group breakout discussions
- **Online Self-Guided meeting on ProjectConnect.com July 27 – August 27**

# Upcoming Fall Engagement

- **MetroRapid**
  - Community meetings for MetroRapid Gold Line and Domain/South Lamar routes – and MetroRapid station design
- **Pickup**
  - Neighborhood outreach for new South Austin service zone
- **MetroRail**
  - Neighborhood outreach on new MetroRail stations







# PROJECT CONNECT: Program Updates

---

**Mobility Committee**

August 5, 2021