



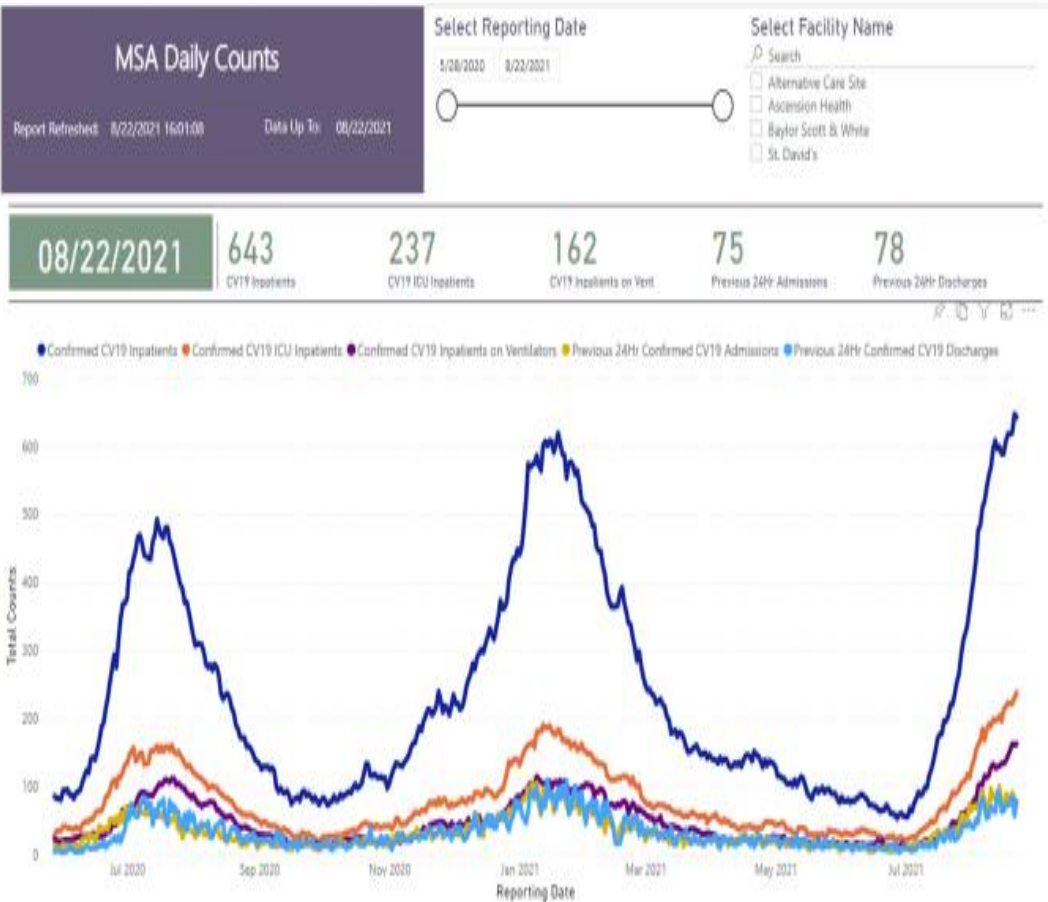
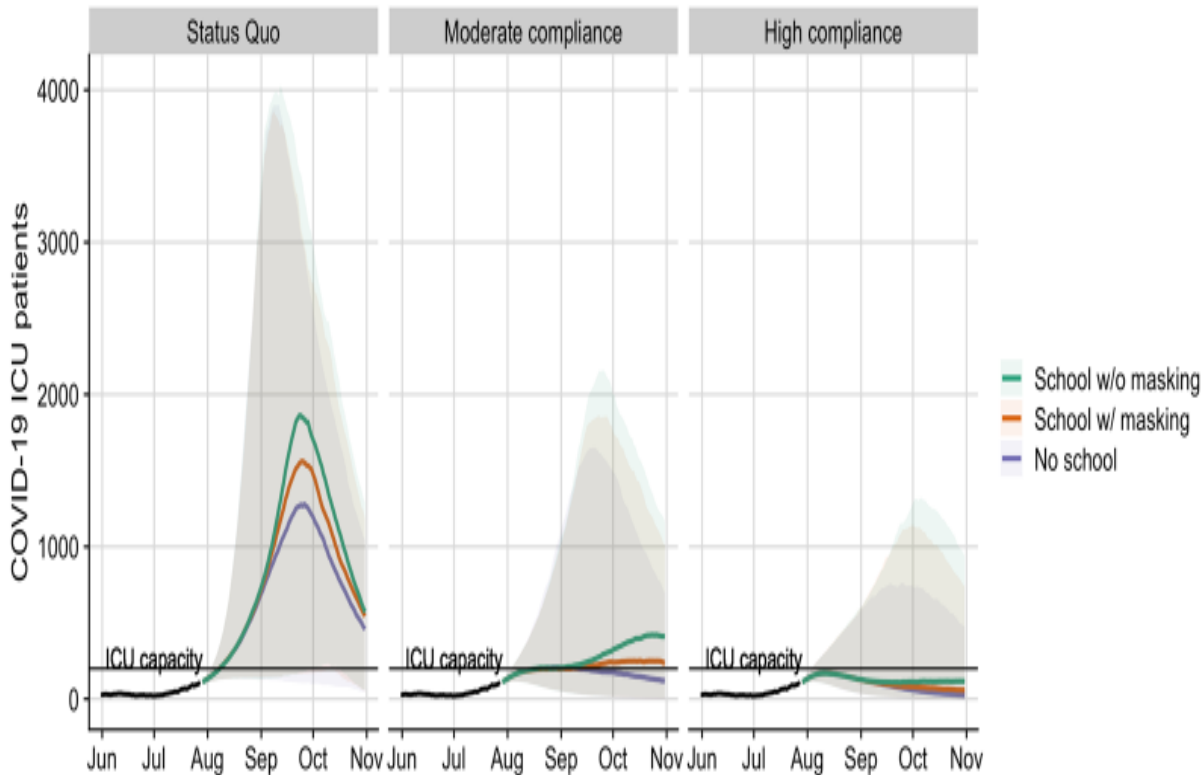
COVID-19 Update

August 24, 2021

DESMAR WALKES MD, HEALTH AUTHORITY/MEDICAL DIRECTOR
CITY OF AUSTIN/TRAVIS COUNTY

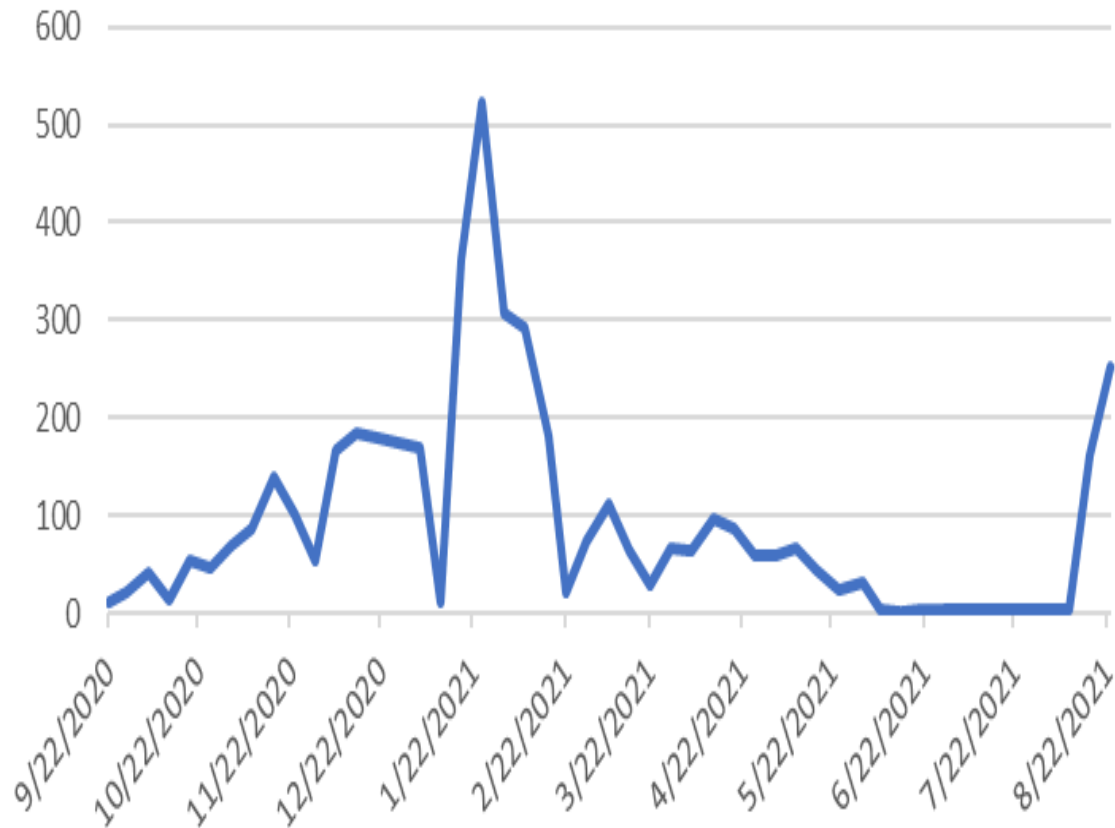


Impact of school reopening with and without masks on ICU projections in Austin accounting for increased hospitalization risk of Delta variant



Austin /Travis County School Cases

9/22/2020-8/23/2021



Austin Public Health

Austin MSA COVID-19 Patients Under 18 Years of Age

Admissions 7/1/2021-8/22/2021 (Data as of 8/23/2021)

Date of Admission

7/1/2021 8/22/2021



Count of Patients Under 18 for Selected Reporting Period

90

Count of Patients Under 18 Admitted to ICU During Stay

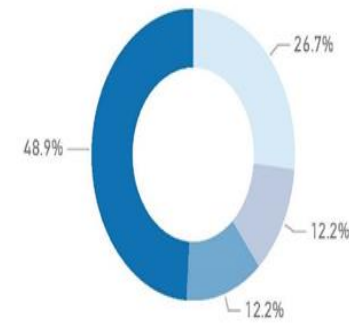
26

Count of Patients Under 18 on Ventilator During Stay

1

Percentage of Austin MSA COVID-19 Patients Under 18 Years of Age

Child Age Group: <1 1-4 5-11 12-17



Austin MSA COVID-19 Patients Under 18 Years of Age by Date of Admission

Child Age Group: <1 1-4 5-11 12-17

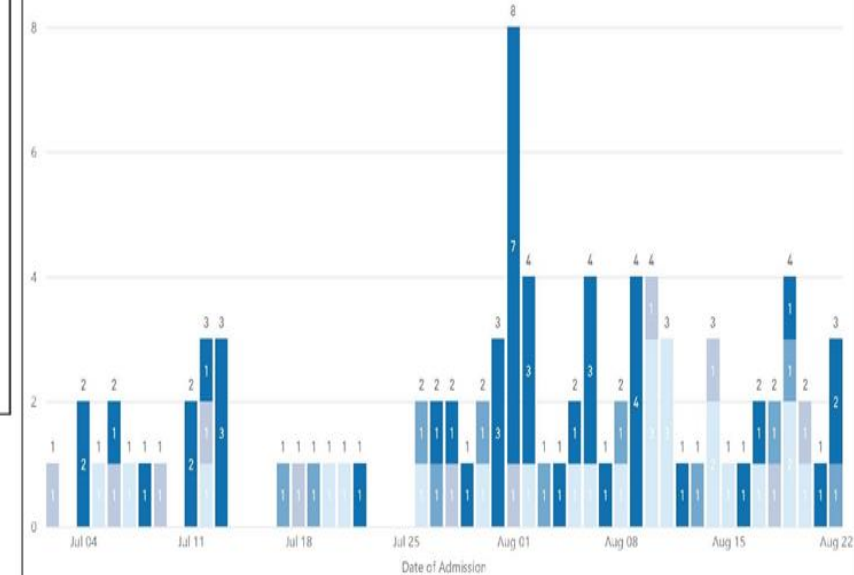
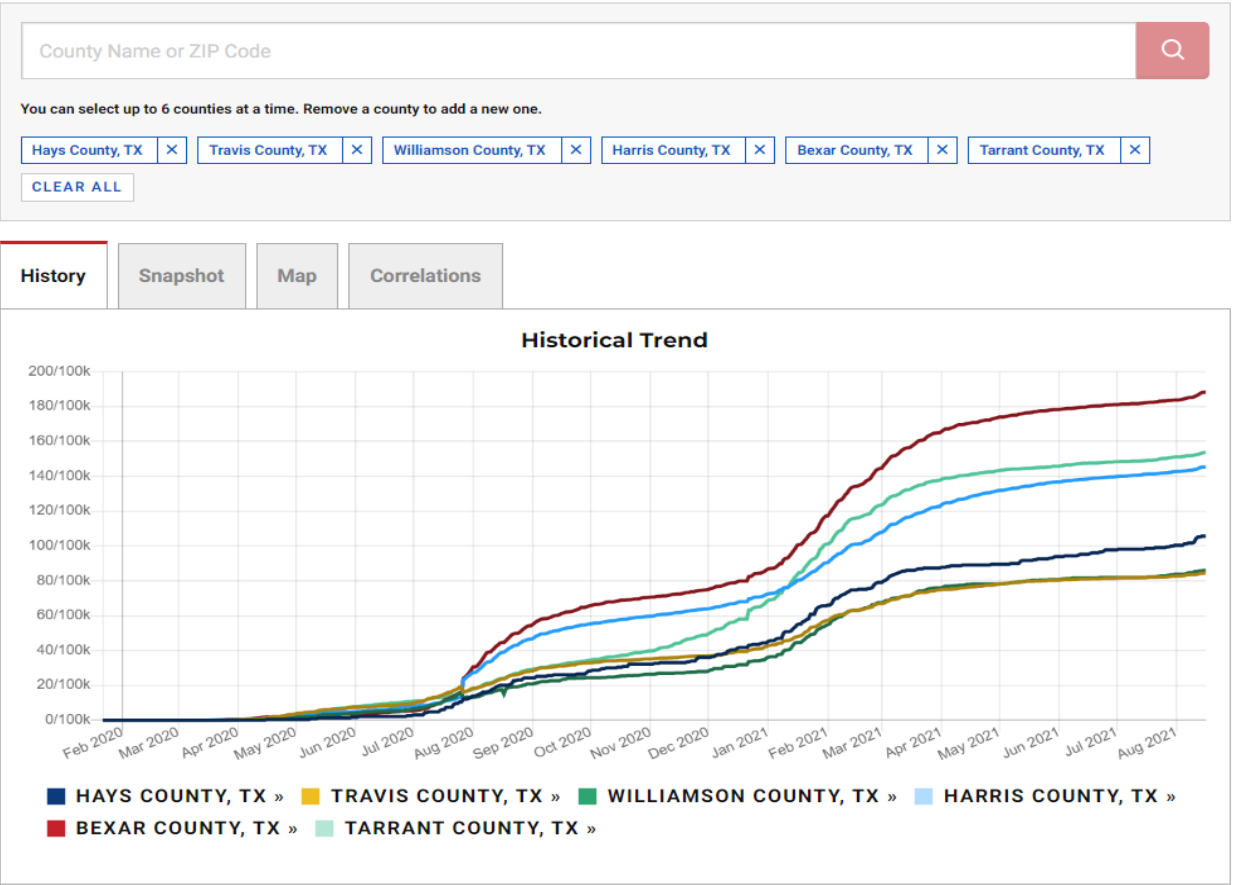


Table 1: COVID-19-associated deaths* in Travis County residents reported to Austin Public Health, as of 8/18/2021 (*laboratory confirmed cases of COVID-19)			
Age group at onset	Date of death		TOTAL
	Jul-21	Aug-21	
20-29	0	3	3
30-39	3	1	4
40-49	2	3	5
50-59	3	2	5
60-69	4	0	4
70-79	5	2	6
80+	4	6	10
ALL	21	16	37

COVID-19 Deaths per 100k

COVID-19

Search below to see a county's rate of COVID-19 deaths by 100,000 population and to compare rates between counties. Use the map to explore COVID-19 death rates across the U.S.



Austin Public Health

Weekly Austin MSA COVID-19 Patient Hospital Admissions by Age Group

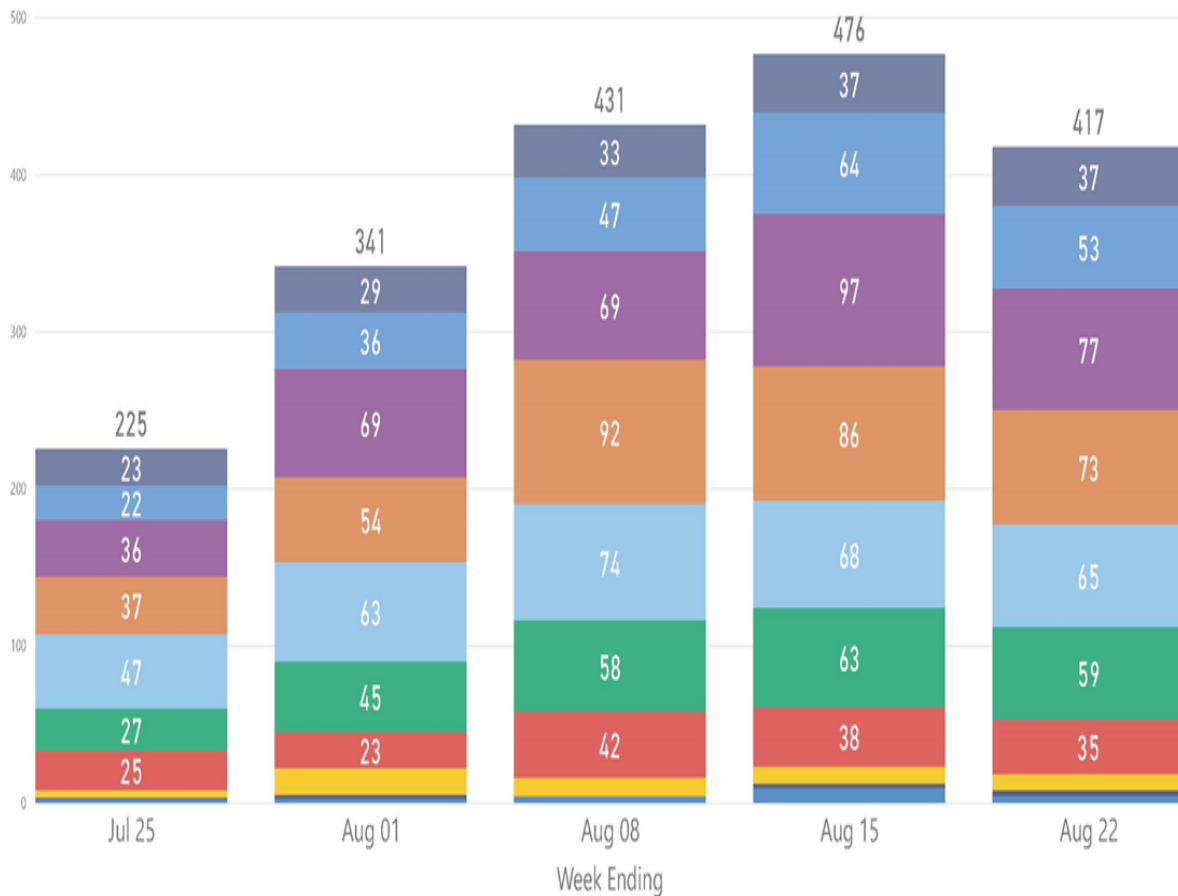
Data as of 8/23/2021

Week Ending

7/25/2021

8/22/2021

Age Group ● <1 ● 1-9 ● 10-19 ● 20-29 ● 30-39 ● 40-49 ● 50-59 ● 60-69 ● 70-79 ● 80+



Austin Public Health

Weekly Austin MSA COVID-19 Patient Hospital Admissions by Race & Ethnicity

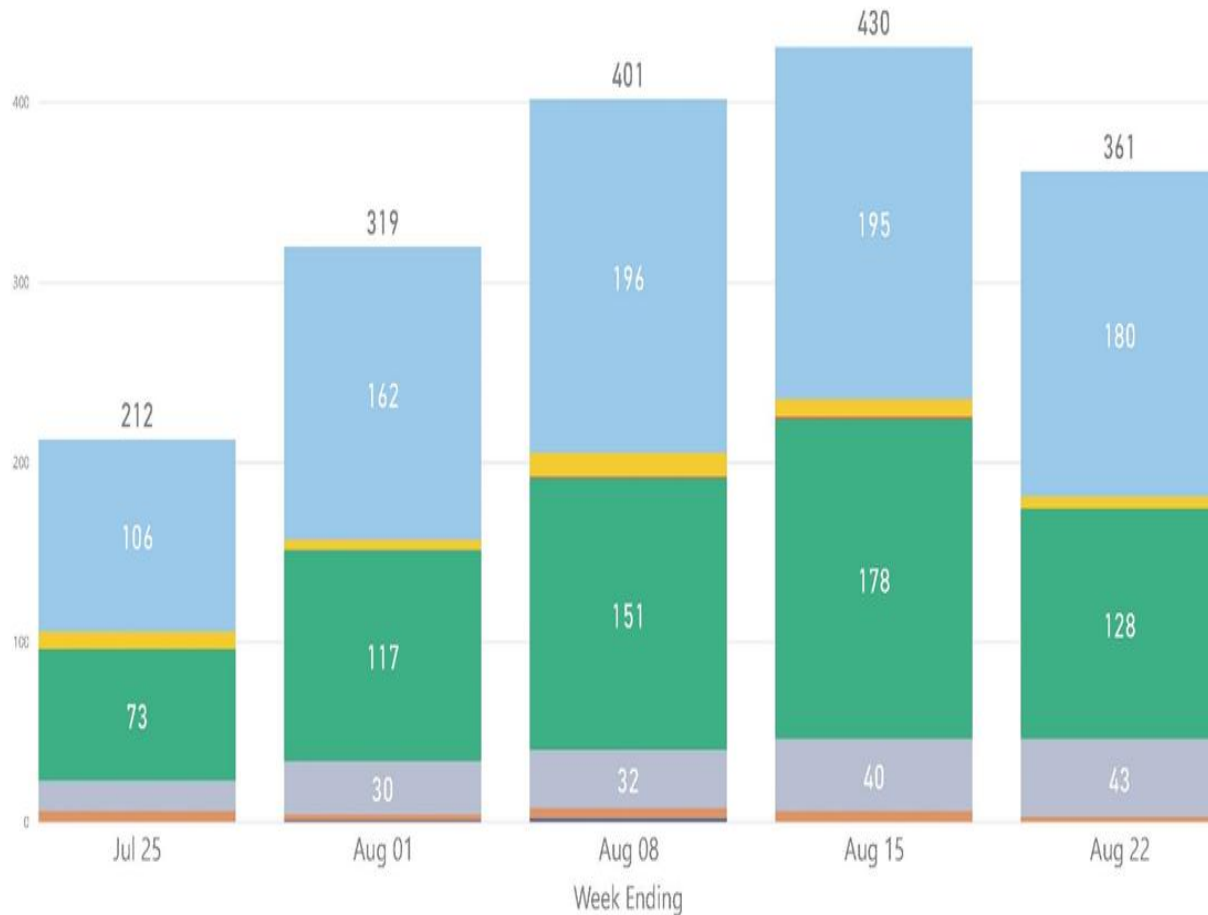
Data as of 8/23/2021

Week Ending

7/25/2021

8/22/2021

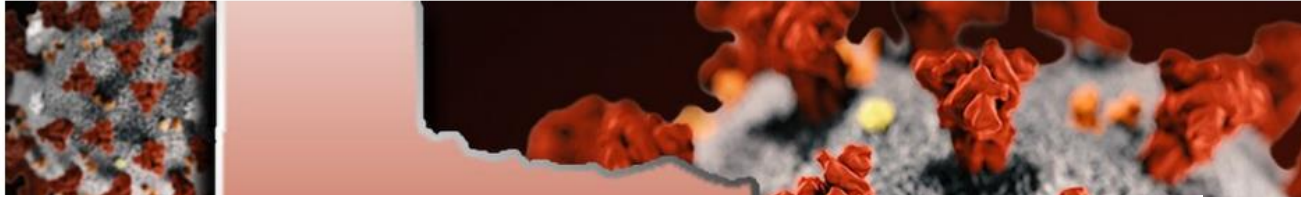
● American Indian/Alaska Native Non-Hispanic ● Asian Non-Hispanic ● Black Non-Hispanic ● Hispanic All Races ● Native Hawaiian/Pacific Islander Non-Hispanic ● Other Non-Hispanic ● White Non-Hispanic



COVID-19 patient shares experience of getting treated at Austin antibody infusion center



9 COVID-19 antibody infusion centers opening across Texas



Texas launches additional COVID-19 antibody infusion centers throughout Texas

• August 17, 2021

0 1 minute read

Travis County offering antibody infusion therapy for COVID-19 patients once again



Desperate Texas doctors turn to antibody treatments to slow down surging COVID-19 hospitalizations

Austin MSA COVID-19 Patient Hospital Admissions by Zip Code

Admissions 8/9/2021-8/22/2021 (Data as of 8/23/2021)

Date of Admission

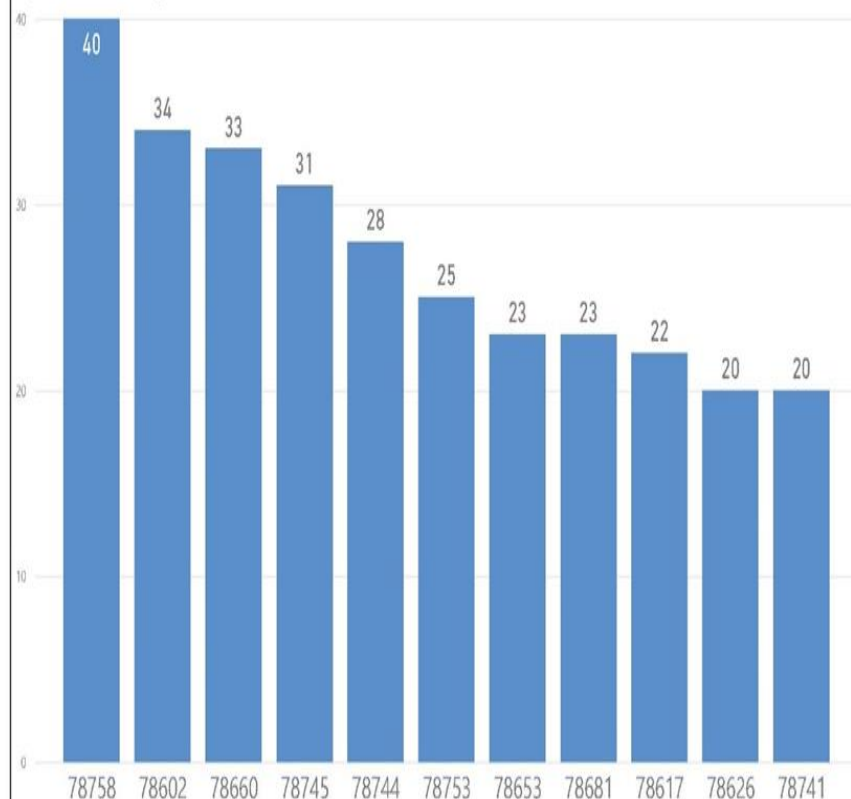
8/9/2021

8/22/2021

Zip Codes by Percentage of Admissions N= 866

Zip Code of Residence	Count	Percentage
78758	40	4.62%
78602	34	3.93%
78660	33	3.81%
78745	31	3.58%
78744	28	3.23%
78753	25	2.89%
78653	23	2.66%
78681	23	2.66%
78617	22	2.54%
78626	20	2.31%
78741	20	2.31%
78628	19	2.19%
78702	18	2.08%
78724	18	2.08%

Zip Codes with Highest Count of Admissions



Note: Admissions for which zip code of the patient is unknown were excluded

Austin MSA COVID-19 Travis County Resident Admissions

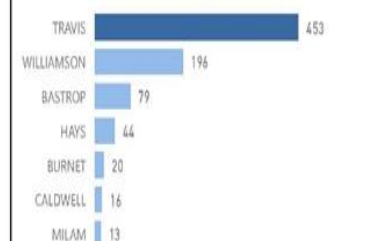
Admissions 8/9/2021-8/22/2021 (Data as of 8/23/2021)

Date of Admission

8/9/2021

8/22/2021

Counties with Highest Count of Admissions



Counties with Highest Percentage of Admissions N= 872

County of Residence	Percentage	Count
TRAVIS	52.01%	453
WILLIAMSON	22.50%	196
BASTROP	9.07%	79
HAYS	5.05%	44
BURNET	2.30%	20
CALDWELL	1.84%	16
MILAM	1.49%	13

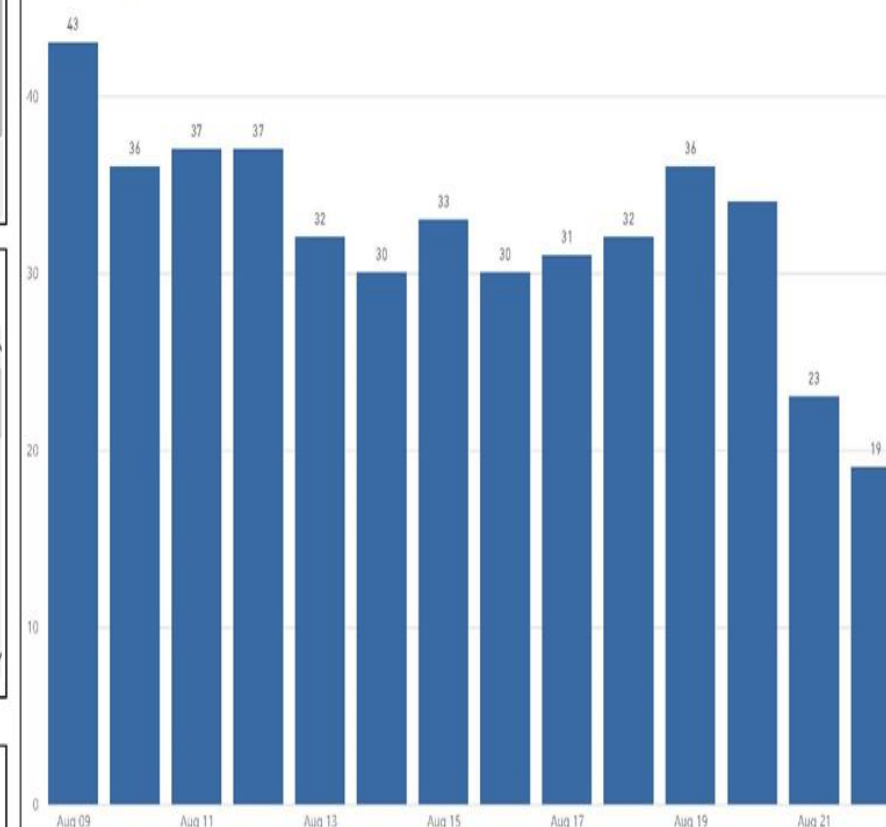
Note: Admissions for which county of patient is unknown were excluded

Total Admissions for Selected Reporting Dates

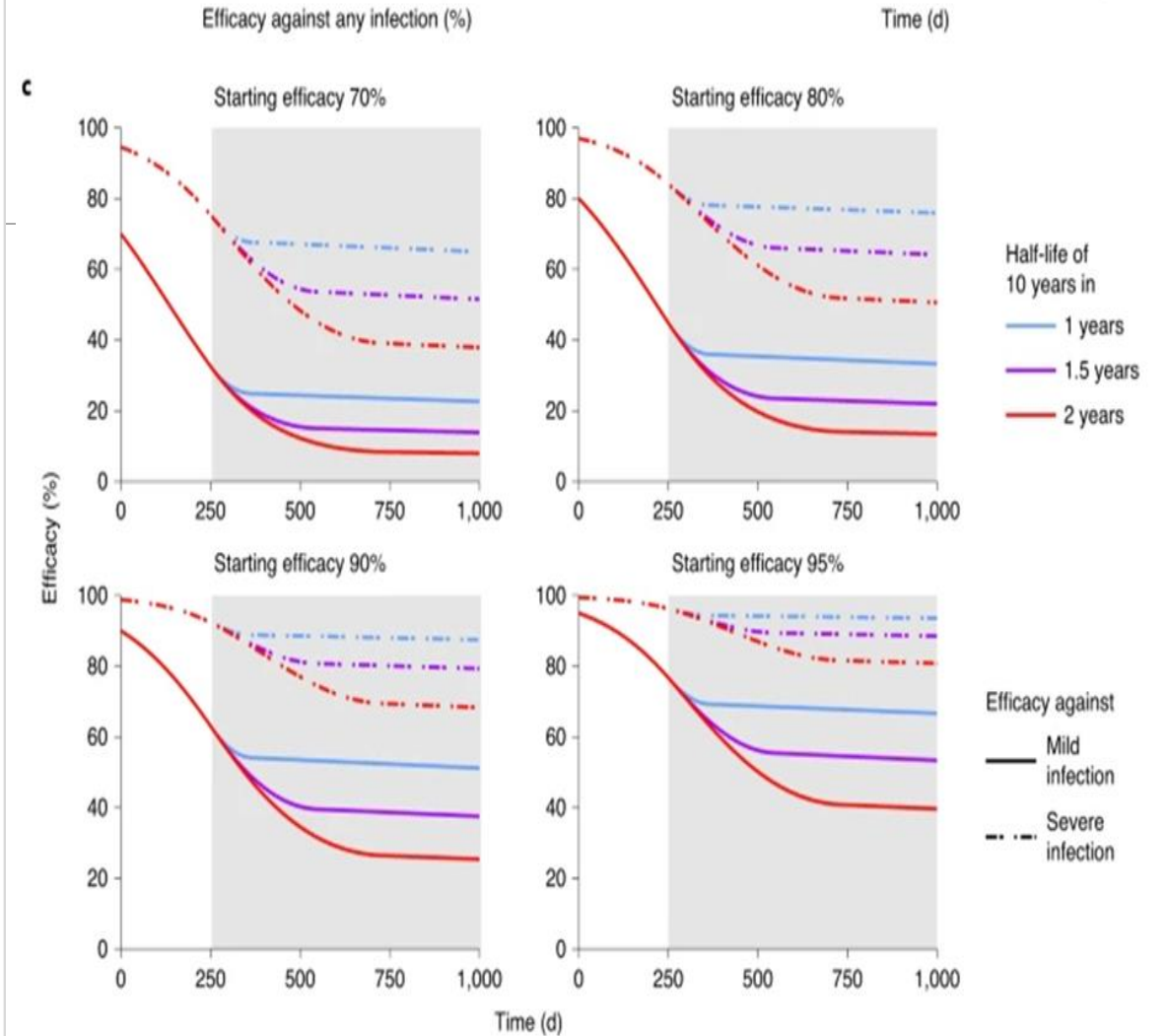
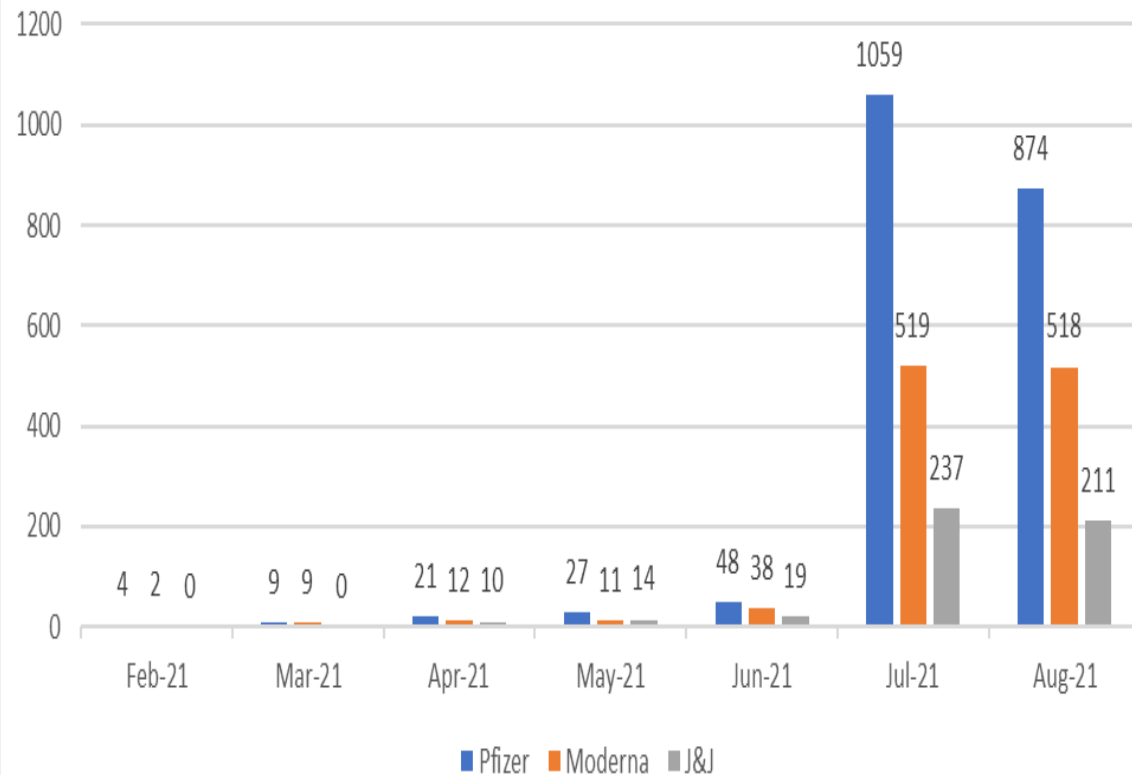
893

Travis County COVID-19 Admissions

County of Residence ● TRAVIS



Confirmed COVID-19 vaccine breakthrough cases by
manufacturer reported to Austin Public Health, Travis County,
Texas, Jan. 1-Aug. 20, 2021 (n=3,642)

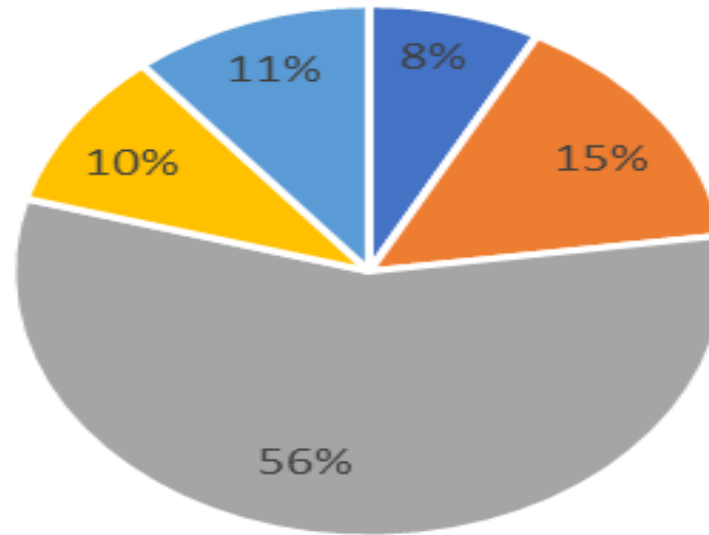


COVID-19 Boosters

AVAILABLE NOW TO IMMUNOCOMPROMISED

SEPTEMBER 20, 2021 - OTHERS 8 MONTHS AFTER THEIR FIRST SERIES

Progress to Herd Immunity 8.22.21



■ Confirmed Cases ■ Estimated ■ Fully Vaccinated ■ Partially Vaccinated ■ Vulnerable



COVID-19 Vaccine Update

August 24, 2021

ADRIENNE STURRUP, INTERIM DIRECTOR



COVID-19 Testing Options

George Morales Dove Springs Rec Center

5801 Ainez Dr, Austin, Texas 78744

Tuesday- Saturday

St. Johns Testing Site

7211 N Interstate 35 Frontage Rd, Austin, Texas 78752

Tuesday- Saturday

In-Home Testing

Available Monday through Friday

Facility Testing

Testing offered to senior living facilities, homeless shelters, and other facilities that have identified one positive COVID-19 case

APH Tests (8/15-8/21):
3,773



Vaccine Dashboard Update

Total Administered by Austin Public Health and CommUnity Care

Cumulative Doses Administered

453,053

Cumulative Dose 1

244,396

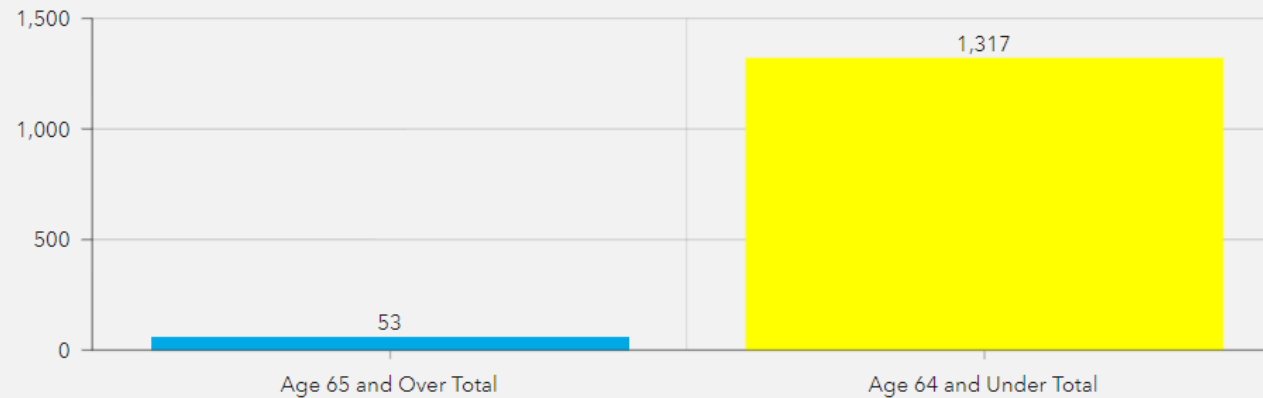
Weekly Doses Administered

1,370

Weekly Dose 1

813

Weekly Dose by Priority Age Group



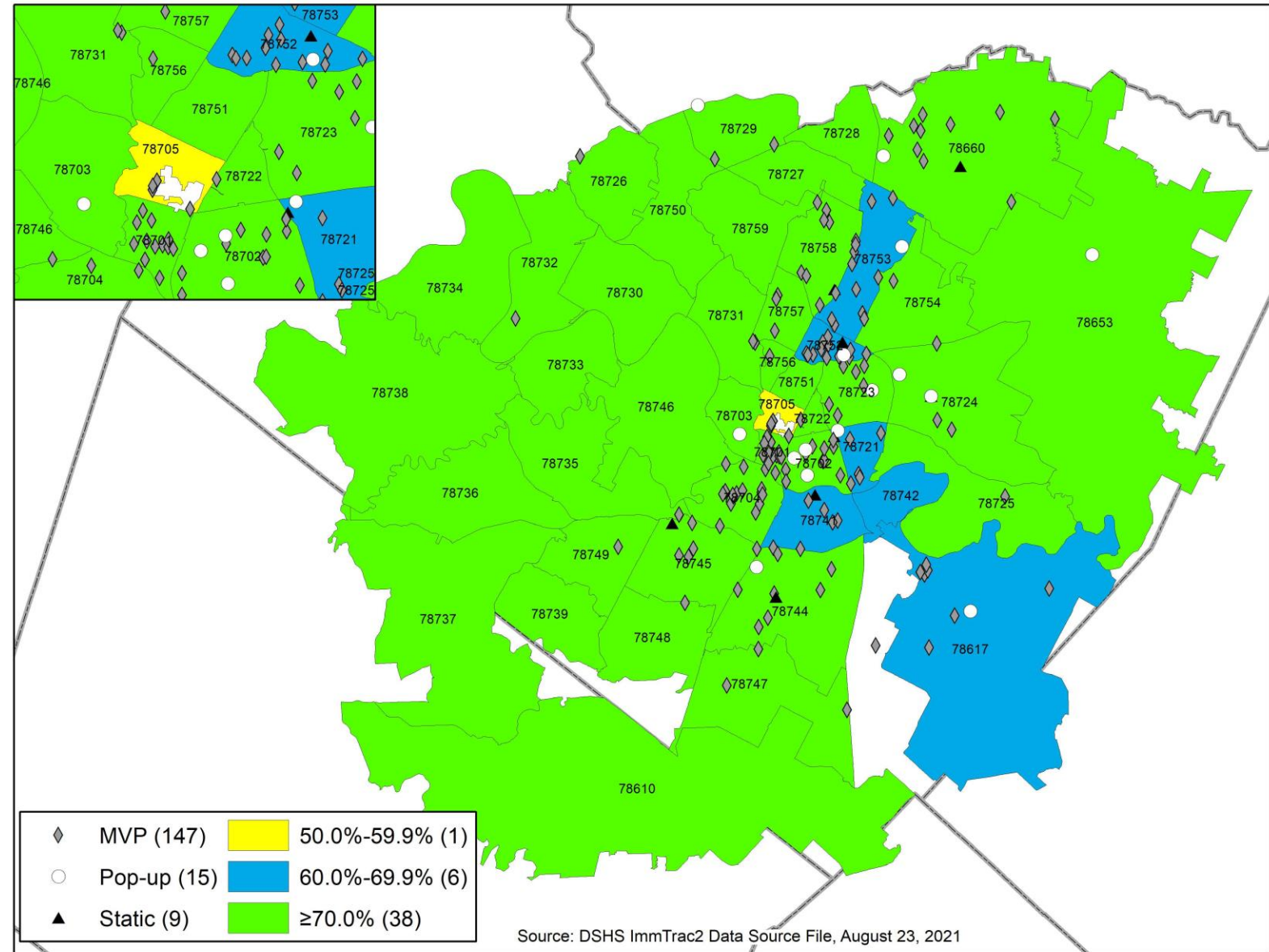
Source: <https://www.austintexas.gov/page/covid-19-dashboards>

*Data for week ending 08/21

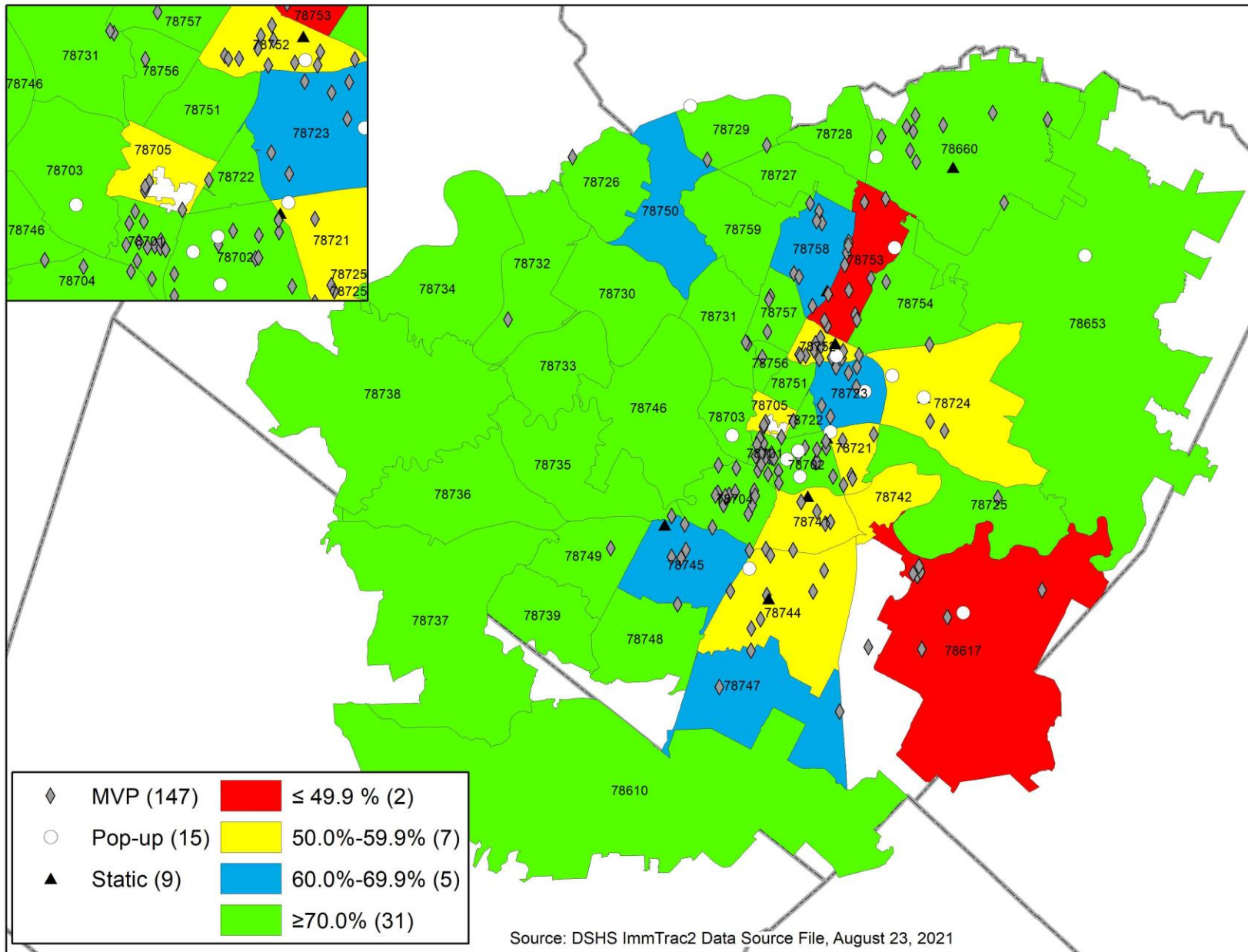
TXDSHS Vaccine Data for Travis County by Race and Ethnicity

Race	Total Census Population	Estimated Eligible Population (12+)	People Vaccinated with at Least One Dose (Texas DSHS) as of 8/23	People Vaccinated with at Least One Dose Percent (%)	Percent (%) Increase Since 8/23	People Fully Vaccinated (Texas DSHS) of 8/23	People Fully Vaccinated Percent (%)	Percent (%) Increase Since 8/23
Asian	83,467	71,782	62,895	87.62%	0.41% (294)	56,506	78.72%	0.55% (398)
Black or African American	104,003	88,403	33,916	38.37%	1.09% (963)	27,559	31.17%	0.81% (718)
Hispanic or Latino	442,687	349,723	186,702	53.39%	1.25% (4,363)	149,882	42.86%	0.94% (3,289)
White	608,874	541,898	368,828	68.06%	0.58% (3,118)	328,453	60.61%	0.63% (3,418)
Other	34,523	24,857	125,576	*		105,086	*	
Unknown			65,559			52,917		
Total	1,273,554	1,076,661	843,476	78.34%	1.20% (12,963)	720,403	66.91%	1.04% (11,231)

First Dose Vaccinated Population



Second Dose/Fully Vaccinated Population



Vaccine Operations

Southeast Branch Library (Moderna & Pfizer)

5803 Nuckols Crossing Rd
Tuesday & Friday: 3PM - 8PM
Saturday: 10AM - 2PM

Little Walnut Creek Branch Library (Moderna & Pfizer)

835 W Rundberg Ln
Tuesday & Friday: 3PM - 8PM
Saturday: 10AM - 2PM

Ana Lark Center (Pfizer)

1400 Tillery St
Tuesday + Friday: 1PM - 7PM
Wednesday, Thursday + Saturday: 9AM-4PM

Manor New Tech High School (Pfizer)

10323 US-290 E
Thursday: 4PM - 7PM

Cristo Rey Catholic Church (Moderna & Pfizer)

2208 E 2nd St
Saturday: 3PM - 6PM

Teri Road Baptist Church (Moderna & Pfizer)

1844 Teri Road
Saturday: 8AM - 12PM

Del Valle Opportunity Center (Pfizer)

5301 B Ross Rd, Del Valle
Saturday: 9AM - 2PM

More vaccine event locations visit

<https://www.austintexas.gov/covid19>

Mobile Operations

Up to ~27 weekly events including:

- 4 ACC Campuses
- Mexican Consulate



619 families served at St. John's PPE event 8/21

Thank you