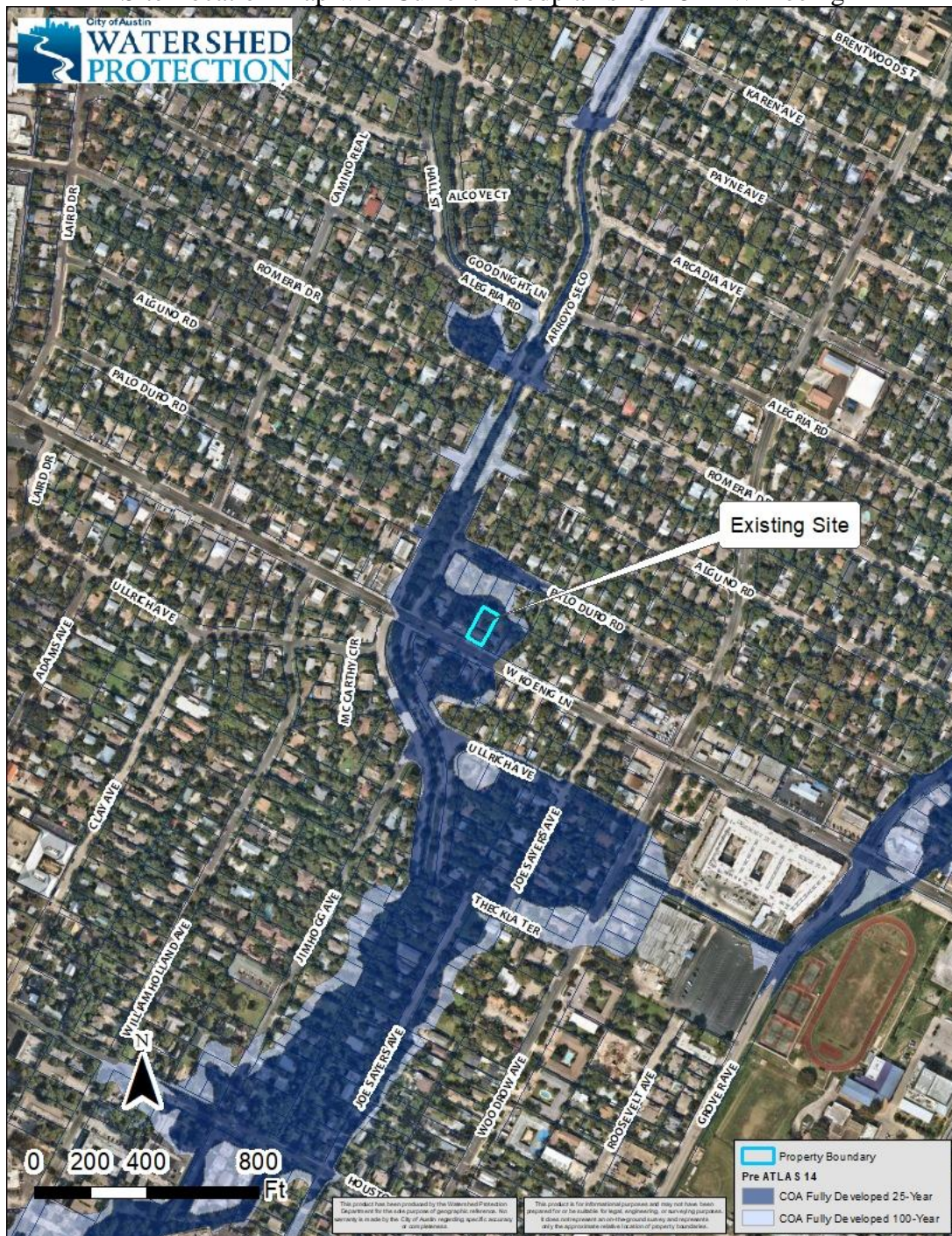


## Backup Information Packet

Concerning a public hearing and consideration of an ordinance authorizing floodplain variances to construct an office development located at 1514 W. Koenig Lane, which encroaches in the 25-year and 100-year floodplains for Hancock Branch of Shoal Creek.

## Site Location Map with Current Floodplains for 1514 W Koenig





Zoomed-in Site Location Map for 1514 W Koenig

